

SR  
Welcome to  
**productive drilling**

# Schlumberger

## END OF WELL REPORT

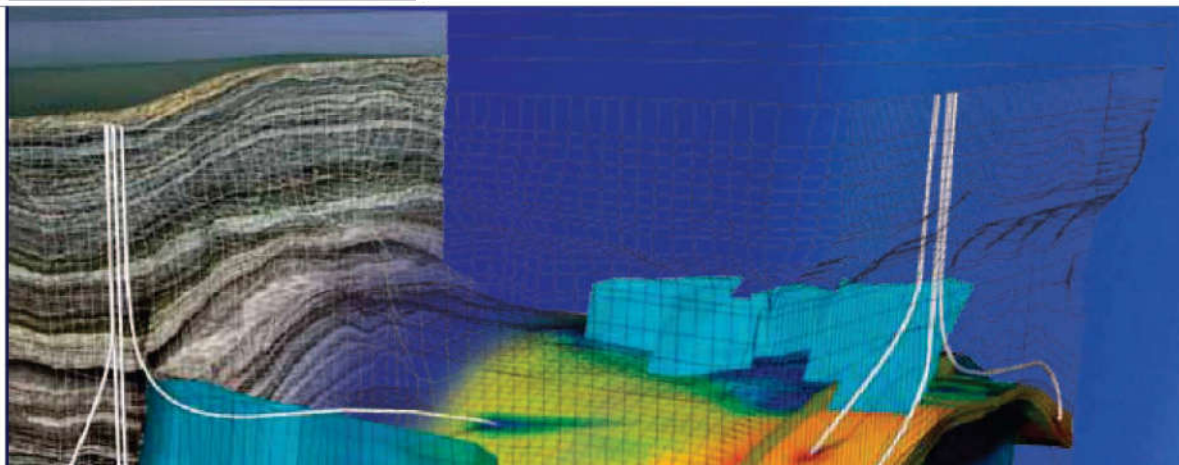
CLIENT - SRC Energy

RIG NAME - PD 462

WELL NAME - Bost Farm 32C-11-L2

COUNTY - Weld County, CO

DATE - Oct 3, 2019



## Bost Farm 32C-11-L2 IFR 0' to 14411' Definitive Survey Geodetic Report

(Def Survey)

**Report Date:** October 07, 2019 - 12:21 PM  
**Client:** SRC Energy  
**Field:** CO, Weld County (NAD 83 NZ) - SRC  
**Structure / Slot:** SRC Energy 07-05N-66W (Bost Farm 5-7 Pad DSU 20) / Bost Farm 32C-11-L2  
**Well:** Bost Farm 32C-11-L2  
**Borehole:** Original Hole  
**UWI / API#:** Unknown / 05-123-50256  
**Survey Name:** Bost Farm 32C-11-L2 IFR 0' to 14411' Definitive  
**Survey Date:** May 29, 2019  
**Tort / AHD / DDI / ERD Ratio:** 186.092 ° / 8117.494 ft / 6.483 / 1.134  
**Coordinate Reference System:** NAD83 Colorado State Plane, Northern Zone, US Feet  
**Location Lat / Long:** N 40° 24' 50.94360", W 104° 49' 42.63240"  
**Location Grid N/E Y/X:** N 1394423.507 ftUS, E 3186976.373 ftUS  
**CRS Grid Convergence Angle:** 0.4339 °  
**Grid Scale Factor:** 0.9999609  
**Version / Patch:** 2.10.782.0

**Survey / DLS Computation:** Minimum Curvature / Lubinski  
**Vertical Section Azimuth:** 269.550 ° (True North)  
**Vertical Section Origin:** 0.000 ft, 0.000 ft  
**TVD Reference Datum:** KB 20ft  
**TVD Reference Elevation:** 4893.000 ft above MSL  
**Seabed / Ground Elevation:** 4873.000 ft above MSL  
**Magnetic Declination:** 7.600 °  
**Total Gravity Field Strength:** 999.0244mgn (9.80665 Based)  
**Gravity Model:** GARM  
**Total Magnetic Field Strength:** 52218.000 nT  
**Magnetic Dip Angle:** 66.600 °  
**Declination Date:** September 04, 2019  
**Magnetic Declination Model:** Magvar IFR  
**North Reference:** True North  
**Grid Convergence Used:** 0.0000 °  
**Total Corr Mag North->True North:** 7.6000 °  
**Local Coord Referenced To:** Well Head

Comments	MD (ft)	Incl (°)	Azim True (°)	TVD (ft)	VSEC (ft)	NS (ft)	EW (ft)	DLS (°/100ft)	Northing (ftUS)	Easting (ftUS)	Latitude (°)	Longitude (°)
Surface	0.00	0.00	0.00	0.00	0.00	0.00	0.00	N/A	1394423.51	3186976.37	40.414151	-104.828509
KB Adjustment	14.00	0.00	0.00	14.00	0.00	0.00	0.00	0.00	1394423.51	3186976.37	40.414151	-104.828509
Begin SLB												
Survey	127.00	0.84	237.08	127.00	0.70	-0.45	-0.70	0.74	1394423.05	3186975.68	40.414150	-104.828511
	215.00	1.10	292.34	214.99	2.02	-0.48	-2.02	1.06	1394423.01	3186974.36	40.414150	-104.828516
	307.00	1.77	324.11	306.96	3.66	1.01	-3.67	1.10	1394424.49	3186972.70	40.414154	-104.828522
	397.00	1.68	333.82	396.92	5.04	3.32	-5.06	0.34	1394426.79	3186971.28	40.414160	-104.828527
	487.00	1.81	3.04	486.88	5.52	5.92	-5.57	0.99	1394429.38	3186970.76	40.414167	-104.828529
	577.00	0.97	350.88	576.85	5.55	8.09	-5.62	0.98	1394431.56	3186970.70	40.414173	-104.828529
	667.00	0.31	255.56	666.84	5.90	8.78	-5.97	1.16	1394432.24	3186970.33	40.414175	-104.828530
	757.00	0.35	256.57	756.84	6.41	8.66	-6.48	0.04	1394432.12	3186969.83	40.414175	-104.828532
	847.00	0.62	151.21	846.84	6.45	8.17	-6.51	0.88	1394431.63	3186969.80	40.414173	-104.828532
	937.00	0.49	159.45	936.84	6.08	7.38	-6.14	0.17	1394430.84	3186970.18	40.414171	-104.828531
	1027.00	0.57	145.57	1026.83	5.70	6.65	-5.75	0.17	1394430.11	3186970.57	40.414169	-104.828530
	1117.00	0.84	103.17	1116.83	4.81	6.13	-4.86	0.63	1394429.60	3186971.47	40.414168	-104.828526
	1207.00	0.62	112.30	1206.82	3.72	5.80	-3.76	0.28	1394429.28	3186972.57	40.414167	-104.828523
	1297.00	0.57	112.25	1296.81	2.86	5.44	-2.90	0.06	1394428.93	3186973.43	40.414166	-104.828519
	1387.00	0.75	38.04	1386.81	2.08	5.74	-2.12	0.90	1394429.23	3186974.21	40.414167	-104.828517
	1477.00	0.80	19.89	1476.80	1.49	6.79	-1.54	0.28	1394430.29	3186974.78	40.414170	-104.828515
	1567.00	0.75	33.90	1566.79	0.94	7.87	-1.00	0.22	1394431.37	3186975.31	40.414173	-104.828513
	1657.00	0.44	324.44	1656.79	0.81	8.64	-0.87	0.80	1394432.14	3186975.43	40.414175	-104.828512
	1747.00	0.44	296.14	1746.79	1.31	9.07	-1.39	0.24	1394432.57	3186974.92	40.414176	-104.828514
	1753.00	0.49	278.96	1752.79	1.36	9.09	-1.43	2.46	1394432.58	3186974.87	40.414176	-104.828514
9 5/8" Casing	1800.00	0.61	290.89	1799.78	1.79	9.21	-1.86	0.35	1394432.70	3186974.44	40.414176	-104.828516
	1869.00	0.81	301.46	1868.78	2.55	9.59	-2.62	0.35	1394433.08	3186973.68	40.414177	-104.828518
	1963.00	0.10	77.87	1962.78	3.03	9.96	-3.11	0.94	1394433.44	3186973.19	40.414178	-104.828520
	2056.00	0.23	176.25	2055.78	2.94	9.79	-3.02	0.28	1394433.27	3186973.28	40.414178	-104.828520
	2148.00	0.19	332.85	2147.78	3.00	9.74	-3.07	0.45	1394433.22	3186973.23	40.414178	-104.828520
	2242.00	0.27	329.00	2241.78	3.18	10.07	-3.26	0.09	1394433.55	3186973.04	40.414179	-104.828521
	2336.00	0.21	282.06	2335.77	3.46	10.29	-3.54	0.21	1394433.77	3186972.75	40.414179	-104.828522
	2429.00	0.09	23.55	2428.77	3.60	10.40	-3.68	0.26	1394433.88	3186972.62	40.414180	-104.828522
	2521.00	0.23	221.83	2520.77	3.69	10.33	-3.77	0.34	1394433.80	3186972.52	40.414179	-104.828523
	2615.00	0.25	77.16	2614.77	3.62	10.23	-3.70	0.49	1394433.71	3186972.60	40.414179	-104.828522
	2709.00	0.14	97.81	2708.77	3.30	10.26	-3.39	0.14	1394433.74	3186972.91	40.414179	-104.828521
	2801.00	0.17	13.32	2800.77	3.16	10.38	-3.24	0.23	1394433.86	3186973.05	40.414179	-104.828521
	2894.00	0.19	238.10	2893.77	3.26	10.43	-3.34	0.36	1394433.91	3186972.95	40.414180	-104.828521
	2987.00	0.20	21.57	2986.77	3.33	10.50	-3.41	0.40	1394433.98	3186972.88	40.414180	-104.828521
	3080.00	0.08	210.77	3079.77	3.30	10.60	-3.39	0.30	1394434.08	3186972.91	40.414180	-104.828521
	3173.00	0.12	85.46	3172.77	3.24	10.55	-3.32	0.19	1394434.03	3186972.97	40.414180	-104.828521
	3266.00	0.20	277.85	3265.77	3.30	10.58	-3.39	0.34	1394434.06	3186972.91	40.414180	-104.828521
	3359.00	0.28	262.46	3358.77	3.69	10.57	-3.77	0.11	1394434.05	3186972.52	40.414180	-104.828523
	3452.00	0.25	329.72	3451.77	4.02	10.72	-4.10	0.32	1394434.19	3186972.19	40.414180	-104.828524
	3545.00	0.11	303.18	3544.77	4.19	10.94	-4.28	0.17	1394434.41	3186972.01	40.414181	-104.828524
	3638.00	3.58	235.91	3637.71	6.68	9.36	-6.76	3.81	1394432.82	3186969.55	40.414177	-104.828533
	3731.00	6.28	237.28	3730.36	13.40	4.98	-13.44	2.91	1394428.39	3186962.89	40.414165	-104.828557
	3824.00	9.19	240.70	3822.50	24.21	-1.40	-24.20	3.17	1394421.92	3186952.18	40.414147	-104.828596
	3917.00	9.76	242.50	3914.23	37.74	-8.68	-37.67	0.69	1394414.55	3186938.77	40.414127	-104.828644
	4009.00	10.34	242.61	4004.82	52.04	-16.08	-51.92	0.63	1394407.04	3186924.58	40.414107	-104.828695
	4102.00	9.93	238.48	4096.37	66.35	-24.11	-66.16	0.90	1394398.90	3186910.40	40.414085	-104.828747
	4196.00	10.19	245.93	4188.93	80.91	-31.74	-80.67	1.41	1394391.16	3186895.95	40.414064	-104.828799
	4288.00	9.80	247.95	4279.53	95.65	-38.00	-95.35	0.57	1394384.79	3186881.31	40.414047	-104.828851
	4381.00	10.22	243.21	4371.12	110.40	-44.69	-110.05	0.99	1394377.99	3186866.67	40.414028	-104.828904
	4475.00	10.65	233.67	4463.57	124.91	-53.59	-124.50	1.89	1394368.98	3186852.29	40.414004	-104.828956
	4568.00	9.37	239.83	4555.16	138.45	-62.49	-137.97	1.79	1394359.98	3186838.89	40.413979	-104.829004
	4660.00	10.13	244.45	4645.83	152.28	-69.74	-151.74	1.18	1394352.62	3186825.17	40.413960	-104.829054
	4753.00	10.21	237.18	4737.37	166.65	-77.74	-166.05	1.38	1394344.52	3186810.93	40.413938	-104.829105
	4845.00	13.32	234.20	4827.43	182.19	-88.36	-181.50	3.44	1394333.78	3186795.56	40.413908	-104.829161
	4939.00	12.62	245.17	4919.04	200.37	-99.00	-199.60	2.72	1394323.00	3186777.53	40.413879	-104.829226
	5032.00	11.42	249.03	5010.00	218.25	-106.57	-217.42	1.55	1394315.30	3186759.77	40.413858	-104.829290
	5127.00	10.28	252.69	5103.30	235.17	-112.45	-234.30	1.40	1394309.29	3186742.94	40.413842	-104.829350
	5219.00	11.02	246.33	5193.72	251.11	-118.43	-250.19	1.51	1394303.19	3186727.10	40.413826	-104.829407
	5314.00	10.97	237.24	5286.99	267.10	-126.96	-266.11	1.82	1394294.54	3186711.25	40.413802	-104.829465
	5409.00	9.58	240.64	5380.46	281.66	-135.73	-280.60	1.60	1394285.66	3186696.82	40.413778	-104.829517
	5503.00	12.08	239.92	5472.78	297.06	-144.50	-295.93	2.66	1394276.78	3186681.56	40.413754	-104.829572
	5596.00	12.10	233.34	5563.72	313.38	-155.20	-312.17	1.48	1394265.96	3186665.40	40.413725	-104.829630
	5690.00	12.83	231.55	5655.50	329.55	-167.57	-328.25	0.88	1394253.46	3186649.42	40.413691	-104.829688
	5782.00	12.95	233.85	5745.19	345.97	-180.00	-344.57	0.57	1394240.91	3186633.19	40.413657	-104.829746
	5876.00	12.48	236.75	5836.88	363.07	-191.78	-361.57	0.84	1394229.00	3186616.28	40.413625	-104.829807
	5968.00	13.26	238.24	5926.57	380.44	-202.79	-378.86	0.92	1394217.86	3186599.08	40.413594	-104.829870
	6061.00	12.41	238.99	6017.25	398.15	-213.55	-396.49	0.93	1394206.97	3186581.53	40.413565	-104.829933
	6154.00	13.24	242.62	6107.93	416.25	-223.60	-414.51	1.24	1394196.79	3186563.58	40.413537	-104.829998
	6248.00	12.81	243.69	6199.51	435.23	-233.17	-433.41	0.52	1394187.07	3186544.76	40.413511	-104.830065
	6345.00	13.07	243.76	6294.04	454.78	-242.78	-452.89	0.27	1394177.31	3186525.35	40.413485	-104.830133
	6441.00	13.13	243.79	6387.55	474.37	-252.40	-472.41	0.06	1394167.55	3186505.91	40.413458	-104.830205
	6534.00	12.62	242.25	6478.21	492.92	-261.79	-490.88	0.66	1394158.02	3186487.51	40.413432	-104.830272
	6626.00	12.58	240.52	6567.99	510.61	-271.40	-508.49	0.41	1394148.27	3186469.97	40.413406	-104.830335

Comments	MD (ft)	Incl (°)	Azim True (°)	TVD (ft)	VSEC (ft)	NS (ft)	EW (ft)	DLS (°/100ft)	Northing (ftUS)	Easting (ftUS)	Latitude (°)	Longitude (°)
	6906.00	34.13	259.39	6824.56	615.07	-298.03	-612.75	8.59	1394120.85	3186365.92	40.413333	-104.830709
	6998.00	42.71	258.98	6896.57	671.25	-308.77	-668.85	9.33	1394109.69	3186309.91	40.413303	-104.830911
	7093.00	51.56	259.79	6961.14	739.73	-321.55	-737.22	9.34	1394096.40	3186241.63	40.413268	-104.831156
	7186.00	57.46	260.46	7015.10	814.40	-334.51	-811.79	6.37	1394082.87	3186167.17	40.413233	-104.831424
	7279.00	64.46	264.22	7060.23	895.00	-345.25	-892.32	8.31	1394071.52	3186086.73	40.413203	-104.831713
	7373.00	70.12	267.04	7096.51	981.47	-351.81	-978.73	6.63	1394064.31	3186000.35	40.413185	-104.832024
	7465.00	73.79	267.80	7125.01	1068.87	-355.74	-1066.10	4.07	1394059.72	3185913.04	40.413174	-104.832337
	7557.00	80.20	268.97	7145.70	1158.44	-358.26	-1155.66	7.08	1394056.53	3185823.51	40.413168	-104.832659
	7650.00	86.28	270.55	7156.64	1250.75	-358.63	-1247.97	6.75	1394055.45	3185731.21	40.413167	-104.832991
	7696.00	87.07	269.85	7159.31	1296.66	-358.47	-1293.89	2.29	1394055.26	3185685.29	40.413167	-104.833155
	7788.00	91.04	270.70	7160.83	1388.63	-358.03	-1385.86	4.41	1394055.01	3185593.32	40.413168	-104.833486
	7881.00	90.57	268.87	7159.52	1481.61	-358.38	-1478.84	2.03	1394053.95	3185500.35	40.413167	-104.833820
	7973.00	90.23	268.89	7158.88	1573.60	-360.18	-1570.82	0.37	1394051.46	3185408.39	40.413162	-104.834150
	8066.00	90.44	268.14	7158.34	1666.59	-362.59	-1663.79	0.84	1394048.34	3185315.45	40.413156	-104.834484
	8158.00	90.31	268.19	7157.73	1758.56	-365.54	-1755.74	0.15	1394044.70	3185223.52	40.413147	-104.834814
	8252.00	90.13	269.58	7157.37	1852.55	-367.36	-1849.72	1.49	1394042.16	3185129.56	40.413142	-104.835151
	8345.00	90.24	269.71	7157.07	1945.55	-367.94	-1942.72	0.18	1394040.88	3185036.58	40.413141	-104.835485
	8437.00	90.14	268.77	7156.77	2037.54	-369.16	-2034.71	1.03	1394038.96	3184944.60	40.413137	-104.835816
	8530.00	90.11	269.63	7156.56	2130.54	-370.46	-2127.70	0.93	1394036.96	3184851.63	40.413134	-104.836150
	8623.00	90.33	269.91	7156.21	2223.54	-370.83	-2220.70	0.38	1394035.88	3184758.64	40.413133	-104.836484
	8717.00	90.09	269.05	7155.86	2317.54	-371.69	-2314.69	0.95	1394034.32	3184664.66	40.413130	-104.836821
	8809.00	90.25	269.18	7155.59	2409.53	-373.11	-2406.68	0.22	1394032.20	3184572.69	40.413127	-104.837152
	8901.00	90.53	270.19	7154.96	2501.53	-373.61	-2498.67	1.14	1394031.00	3184480.70	40.413125	-104.837482
	8996.00	91.61	269.75	7153.19	2596.51	-373.66	-2593.66	1.23	1394030.23	3184385.73	40.413125	-104.837823
	9088.00	91.77	269.35	7150.48	2688.47	-374.38	-2685.61	0.47	1394028.81	3184293.78	40.413123	-104.838153
	9181.00	91.50	269.28	7147.82	2781.43	-375.50	-2778.57	0.30	1394027.00	3184200.84	40.413120	-104.838487
	9273.00	91.60	269.65	7145.33	2873.40	-376.35	-2870.53	0.42	1394025.44	3184108.89	40.413117	-104.838817
	9366.00	91.15	268.92	7143.10	2966.37	-377.51	-2963.49	0.92	1394023.58	3184015.94	40.413114	-104.839151
	9459.00	90.32	269.93	7141.91	3059.36	-378.45	-3056.48	1.41	1394021.94	3183922.97	40.413112	-104.839485
	9552.00	89.99	269.06	7141.66	3152.36	-379.27	-3149.48	1.00	1394020.42	3183829.99	40.413109	-104.839819
	9644.00	90.32	269.22	7141.41	3244.35	-380.65	-3241.46	0.40	1394018.34	3183738.02	40.413106	-104.840149
	9738.00	90.22	269.79	7140.97	3338.35	-381.46	-3335.46	0.62	1394016.82	3183644.03	40.413103	-104.840487
	9831.00	91.23	269.91	7139.79	3431.34	-381.70	-3428.45	1.09	1394015.87	3183551.05	40.413103	-104.840821
	9923.00	91.29	269.38	7137.77	3523.32	-382.27	-3520.43	0.58	1394014.60	3183459.09	40.413101	-104.841151
	10017.00	90.50	269.17	7136.30	3617.31	-383.46	-3614.41	0.87	1394012.70	3183365.12	40.413098	-104.841489
	10109.00	90.01	268.51	7135.89	3709.30	-385.33	-3706.39	0.89	1394010.14	3183273.16	40.413093	-104.841819
	10202.00	90.12	270.29	7135.78	3802.29	-386.30	-3799.38	1.92	1394008.47	3183180.19	40.413090	-104.842153
	10295.00	89.93	269.82	7135.74	3895.29	-386.21	-3892.38	0.55	1394007.85	3183087.19	40.413090	-104.842487
	10387.00	90.20	270.65	7135.64	3987.28	-385.83	-3984.38	0.95	1394007.53	3182995.20	40.413091	-104.842817
	10480.00	90.14	270.57	7135.36	4080.27	-384.84	-4077.37	0.11	1394007.82	3182902.20	40.413094	-104.843151
	10572.00	90.07	270.74	7135.19	4172.25	-383.79	-4169.36	0.20	1394008.17	3182810.21	40.413097	-104.843482
	10665.00	90.39	270.81	7134.82	4265.23	-382.53	-4262.35	0.35	1394008.73	3182717.21	40.413100	-104.843815
	10758.00	90.54	270.63	7134.07	4358.20	-381.36	-4355.34	0.25	1394009.19	3182624.22	40.413103	-104.844149
	10851.00	90.49	270.56	7133.23	4451.18	-380.40	-4448.33	0.09	1394009.45	3182531.23	40.413106	-104.844483
	10945.00	90.28	271.01	7132.60	4545.16	-379.11	-4542.32	0.53	1394010.03	3182437.24	40.413109	-104.844821
	11038.00	90.18	270.10	7132.22	4638.14	-378.21	-4635.32	0.98	1394010.22	3182344.24	40.413112	-104.845155
	11132.00	90.27	269.56	7131.86	4732.14	-378.49	-4729.32	0.58	1394009.23	3182250.25	40.413111	-104.845492
	11224.00	90.41	269.02	7131.31	4824.14	-379.63	-4821.31	0.61	1394007.40	3182158.28	40.413108	-104.845823
	11317.00	90.43	269.43	7130.63	4917.14	-380.89	-4914.30	0.44	1394005.43	3182065.30	40.413104	-104.846157
	11409.00	90.26	269.80	7130.07	5009.13	-381.51	-5006.29	0.44	1394004.12	3181973.32	40.413102	-104.846487
	11501.00	90.07	269.33	7129.81	5101.13	-382.20	-5098.29	0.55	1394002.73	3181881.33	40.413100	-104.846817
	11594.00	90.52	269.43	7129.33	5194.13	-383.21	-5191.28	0.50	1394001.01	3181788.36	40.413098	-104.847151
	11686.00	90.40	269.05	7128.59	5286.13	-384.43	-5283.27	0.43	1393999.10	3181696.38	40.413094	-104.847482
	11779.00	90.18	269.39	7128.12	5379.12	-385.70	-5376.26	0.44	1393997.13	3181603.41	40.413091	-104.847816
	11871.00	90.30	269.23	7127.74	5471.12	-386.80	-5468.25	0.22	1393995.32	3181511.43	40.413088	-104.848146
	11964.00	90.46	269.13	7127.12	5564.12	-388.14	-5561.24	0.20	1393993.29	3181418.46	40.413084	-104.848480
	12057.00	90.26	269.89	7126.53	5657.12	-388.93	-5654.23	0.85	1393991.79	3181325.48	40.413082	-104.848814
	12150.00	90.51	270.05	7125.91	5750.11	-388.98	-5747.23	0.32	1393991.04	3181232.49	40.413081	-104.849148
	12243.00	90.45	269.72	7125.13	5843.11	-389.17	-5840.23	0.36	1393990.15	3181139.50	40.413081	-104.849482
	12338.00	90.30	270.07	7124.51	5938.10	-389.34	-5935.23	0.40	1393989.25	3181044.51	40.413080	-104.849823
	12432.00	90.13	270.13	7124.16	6032.10	-389.18	-6029.23	0.19	1393988.70	3180950.51	40.413081	-104.850160
	12524.00	89.94	268.98	7124.10	6124.09	-389.89	-6121.22	1.27	1393987.29	3180858.53	40.413079	-104.850491
	12617.00	89.84	268.40	7124.28	6217.08	-392.02	-6214.20	0.63	1393984.46	3180765.58	40.413073	-104.850825
	12710.00	89.77	269.41	7124.59	6310.08	-393.79	-6307.18	1.09	1393981.98	3180672.62	40.413068	-104.851159
	12804.00	89.81	269.54	7124.94	6404.08	-394.65	-6401.17	0.14	1393980.41	3180578.63	40.413065	-104.851496
	12896.00	90.06	270.49	7125.04	6496.07	-394.63	-6493.17	1.07	1393979.74	3180486.64	40.413065	-104.851826
	12989.00	90.02	270.36	7124.98	6589.06	-393.94	-6586.17	0.15	1393979.72	3180393.65	40.413067	-104.852160
	13082.00	90.03	270.39	7124.94	6682.05	-393.33	-6679.17	0.03	1393979.63	3180300.65	40.413069	-104.852494
	13175.00	89.78	269.33	7125.09	6775.05	-393.56	-6772.17	1.17	1393978.70	3180207.66	40.413068	-104.852828
	13267.00	89.75	269.38	7125.47	6867.05	-394.60	-6864.16	0.06	1393976.96	3180115.68	40.413065	-104.853159
	13360.00	89.95	269.32	7125.71	6960.05	-395.65	-6957.15	0.22	1393975.20	3180022.70	40.413062	-104.853493
	13454.00	90.03	270.20	7125.73	7054.04	-396.04	-7051.15	0.94	1393974.10	3179928.71	40.413061	-104.853830
	13548.00	90.06	269.29	7125.66	7148.04	-396.46	-7145.15	0.97	1393972.97	3179834.72	40.413060	-104.854168
	13642.00	89.98	269.74	7125.62	7242.04	-397.26	-7239.15	0.49	1393971.46	3179740.74	40.413058	-104.854505
	13737.00	90.04	270.41	7125.61	7337.04	-397.13	-7334.14	0.71	1393970.87	3179645.75	40.413058	-104.854846
	13831.00	89.86	269.24	7125.69	7431.03	-397.42	-7428.14	1.26	1393969.87	3179551.76	40.413057	-104.855184
	13925.00	89.65	269.10	7126.09	7525.03	-398.78	-7522.13	0.27	1393967.79	3179457.79	40.413053	-104.855522
	14020.00	89.73	270.35	7126.60	7620.03	-399.24	-7617.13	1.32				



# SRC Energy

# Schlumberger

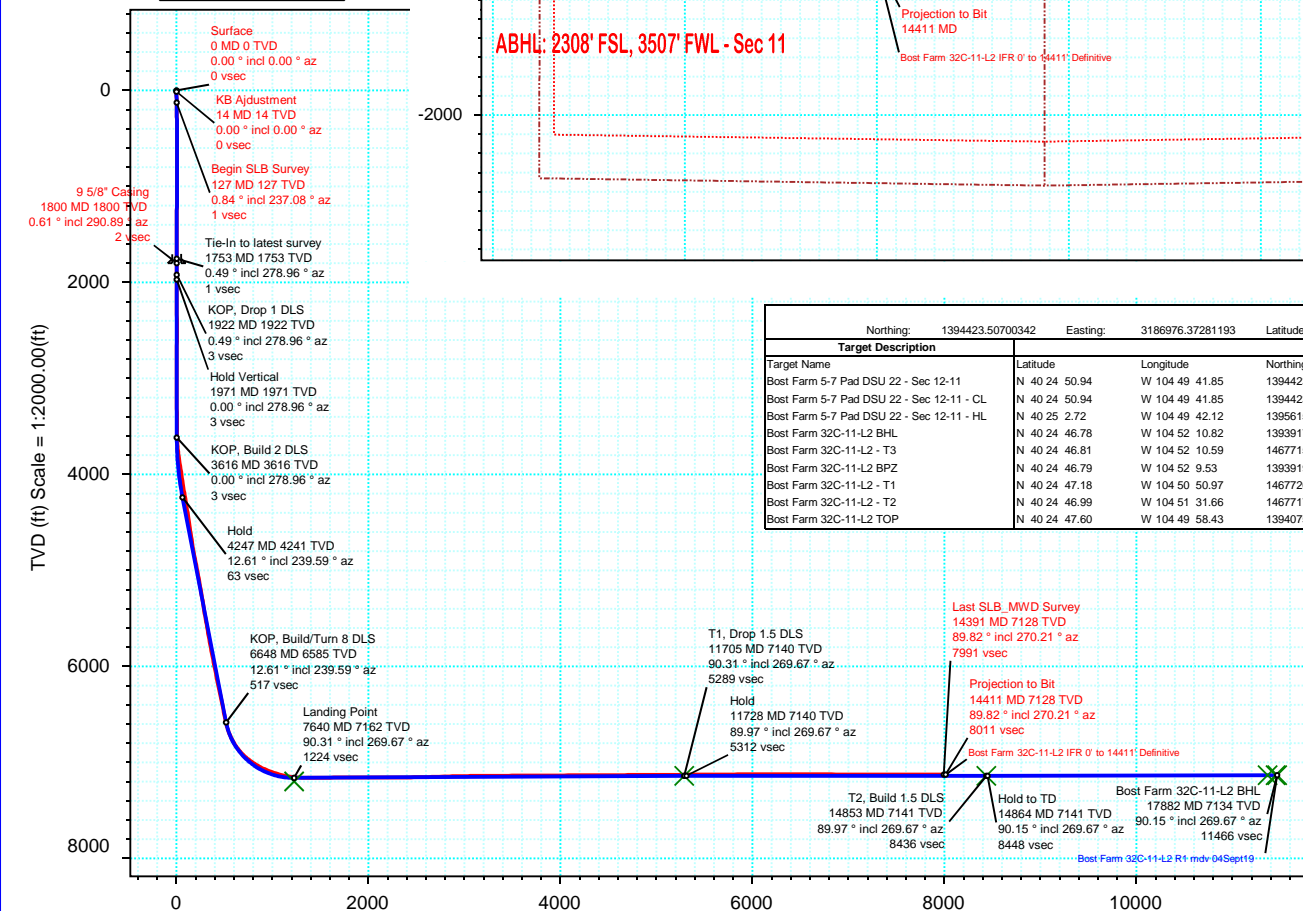
Borehole: <b>Original Hole</b>		Well: <b>Bost Farm 32C-11-L2</b>	Field: <b>CO, Weld County (NAD 83 NZ) - SRC</b>	Structure: <b>SRC Energy 07-05N-66W (Bost Farm 5-7 Pad DSU 20)</b>
-----------------------------------	--	-------------------------------------	--	---

Gravity & Magnetic Parameters			Surface Location NAD83 Colorado State Plane, Northern Zone, US Feet			Miscellaneous		
Model:	Magvar IFR	Dip: 66.6°	Date:	04-Sep-2019	Lat: N 40 24 50.94	Northings:	1394423.51ftUS	Grid Conv: 0.4339°
MagDec:	7.6°	FS: 52218nT	Gravity FS:	999.024mgn (9.80665 Based)	Lon: W 104 49 42.63	Easting:	3186976.37ftUS	Scale Fact: 0.9999609
						Slot:	Bost Farm 32C-11-L2	TVD Ref: KB 20ft(4893ft above MSL)
						Plan:	Bost Farm 32C-11-L2 IFR 0' to 14411' Definitive	

## Final Pva



True North  
Tot Corr (M->T 7.600°)  
Mag Dec (7.600°)  
Grid Conv (0.434°)



Target Description		Surface Location		Grid Coord		Local Coord	
Northing: 1394423.50700342 Easting: 3186976.37281193 Latitude: N 40 24 50.94 Longitude: W 104 49 42.63 VSec Azimuth: 269.55		Northing: 1394423.60 Easting: 3187036.52 TVD: 4893.00 VSec: -60.14 N(+)/S(-): -0.36 E(+)/W(-): 60.15		Northing: 1394423.60 Easting: 3187036.52 TVD: 4893.00 VSec: -60.14 N(+)/S(-): -0.36 E(+)/W(-): 60.15		Northing: 1394423.60 Easting: 3187036.52 TVD: 4893.00 VSec: -60.14 N(+)/S(-): -0.36 E(+)/W(-): 60.15	
Bost Farm 5-7 Pad DSU 22 - Sec 12-11		Northing: 1394423.60 Easting: 3187036.52 TVD: 4893.00 VSec: -60.14 N(+)/S(-): -0.36 E(+)/W(-): 60.15		Northing: 1394423.60 Easting: 3187036.52 TVD: 4893.00 VSec: -60.14 N(+)/S(-): -0.36 E(+)/W(-): 60.15		Northing: 1394423.60 Easting: 3187036.52 TVD: 4893.00 VSec: -60.14 N(+)/S(-): -0.36 E(+)/W(-): 60.15	
Bost Farm 5-7 Pad DSU 22 - Sec 12-11 - CL		Northing: 1394423.60 Easting: 3187036.52 TVD: 4893.00 VSec: -60.14 N(+)/S(-): -0.36 E(+)/W(-): 60.15		Northing: 1394423.60 Easting: 3187036.52 TVD: 4893.00 VSec: -60.14 N(+)/S(-): -0.36 E(+)/W(-): 60.15		Northing: 1394423.60 Easting: 3187036.52 TVD: 4893.00 VSec: -60.14 N(+)/S(-): -0.36 E(+)/W(-): 60.15	
Bost Farm 5-7 Pad DSU 22 - Sec 12-11 - HL		Northing: 1394423.60 Easting: 3187036.52 TVD: 4893.00 VSec: -60.14 N(+)/S(-): -0.36 E(+)/W(-): 60.15		Northing: 1394423.60 Easting: 3187036.52 TVD: 4893.00 VSec: -60.14 N(+)/S(-): -0.36 E(+)/W(-): 60.15		Northing: 1394423.60 Easting: 3187036.52 TVD: 4893.00 VSec: -60.14 N(+)/S(-): -0.36 E(+)/W(-): 60.15	
Bost Farm 32C-11-L2 BHL		Northing: 1394423.60 Easting: 3187036.52 TVD: 4893.00 VSec: -60.14 N(+)/S(-): -0.36 E(+)/W(-): 60.15		Northing: 1394423.60 Easting: 3187036.52 TVD: 4893.00 VSec: -60.14 N(+)/S(-): -0.36 E(+)/W(-): 60.15		Northing: 1394423.60 Easting: 3187036.52 TVD: 4893.00 VSec: -60.14 N(+)/S(-): -0.36 E(+)/W(-): 60.15	
Bost Farm 32C-11-L2 - T3		Northing: 1394423.60 Easting: 3187036.52 TVD: 4893.00 VSec: -60.14 N(+)/S(-): -0.36 E(+)/W(-): 60.15		Northing: 1394423.60 Easting: 3187036.52 TVD: 4893.00 VSec: -60.14 N(+)/S(-): -0.36 E(+)/W(-): 60.15		Northing: 1394423.60 Easting: 3187036.52 TVD: 4893.00 VSec: -60.14 N(+)/S(-): -0.36 E(+)/W(-): 60.15	
Bost Farm 32C-11-L2 BPZ		Northing: 1394423.60 Easting: 3187036.52 TVD: 4893.00 VSec: -60.14 N(+)/S(-): -0.36 E(+)/W(-): 60.15		Northing: 1394423.60 Easting: 3187036.52 TVD: 4893.00 VSec: -60.14 N(+)/S(-): -0.36 E(+)/W(-): 60.15		Northing: 1394423.60 Easting: 3187036.52 TVD: 4893.00 VSec: -60.14 N(+)/S(-): -0.36 E(+)/W(-): 60.15	
Bost Farm 32C-11-L2 - T1		Northing: 1394423.60 Easting: 3187036.52 TVD: 4893.00 VSec: -60.14 N(+)/S(-): -0.36 E(+)/W(-): 60.15		Northing: 1394423.60 Easting: 3187036.52 TVD: 4893.00 VSec: -60.14 N(+)/S(-): -0.36 E(+)/W(-): 60.15		Northing: 1394423.60 Easting: 3187036.52 TVD: 4893.00 VSec: -60.14 N(+)/S(-): -0.36 E(+)/W(-): 60.15	
Bost Farm 32C-11-L2 - T2		Northing: 1394423.60 Easting: 3187036.52 TVD: 4893.00 VSec: -60.14 N(+)/S(-): -0.36 E(+)/W(-): 60.15		Northing: 1394423.60 Easting: 3187036.52 TVD: 4893.00 VSec: -60.14 N(+)/S(-): -0.36 E(+)/W(-): 60.15		Northing: 1394423.60 Easting: 3187036.52 TVD: 4893.00 VSec: -60.14 N(+)/S(-): -0.36 E(+)/W(-): 60.15	
Bost Farm 32C-11-L2 TOP		Northing: 1394423.60 Easting: 3187036.52 TVD: 4893.00 VSec: -60.14 N(+)/S(-): -0.36 E(+)/W(-): 60.15		Northing: 1394423.60 Easting: 3187036.52 TVD: 4893.00 VSec: -60.14 N(+)/S(-): -0.36 E(+)/W(-): 60.15		Northing: 1394423.60 Easting: 3187036.52 TVD: 4893.00 VSec: -60.14 N(+)/S(-): -0.36 E(+)/W(-): 60.15	

Critical Points								
Critical Point	MD	INCL	AZIM	TVD	VSEC	N(+)/S(-)	E(+)/W(-)	DLS
Surface	0.00	0.00	0.00	0.00	0.00	0.00	0.00	
KB Adjustment	14.00	0.00	0.00	14.00	0.00	0.00	0.00	0.00
Begin SLB Survey	127.00	0.84	237.08	127.00	0.70	-0.45	-0.70	0.74
9 5/8\" Casing	1800.00	0.61	290.89	1799.78	1.79	9.21	-1.86	0.35
Last SLB_MWD Survey	14391.00	89.82	270.21	7128.06	7991.01	-401.37	-7988.11	0.55
Projection to Bit	14411.00	89.82	270.21	7128.12	8011.01	-401.29	-8008.11	0.00

Vertical Section (ft) Azim = 269.55° Scale = 1:2000.00(ft) Origin = 0N/-S, 0E/-W