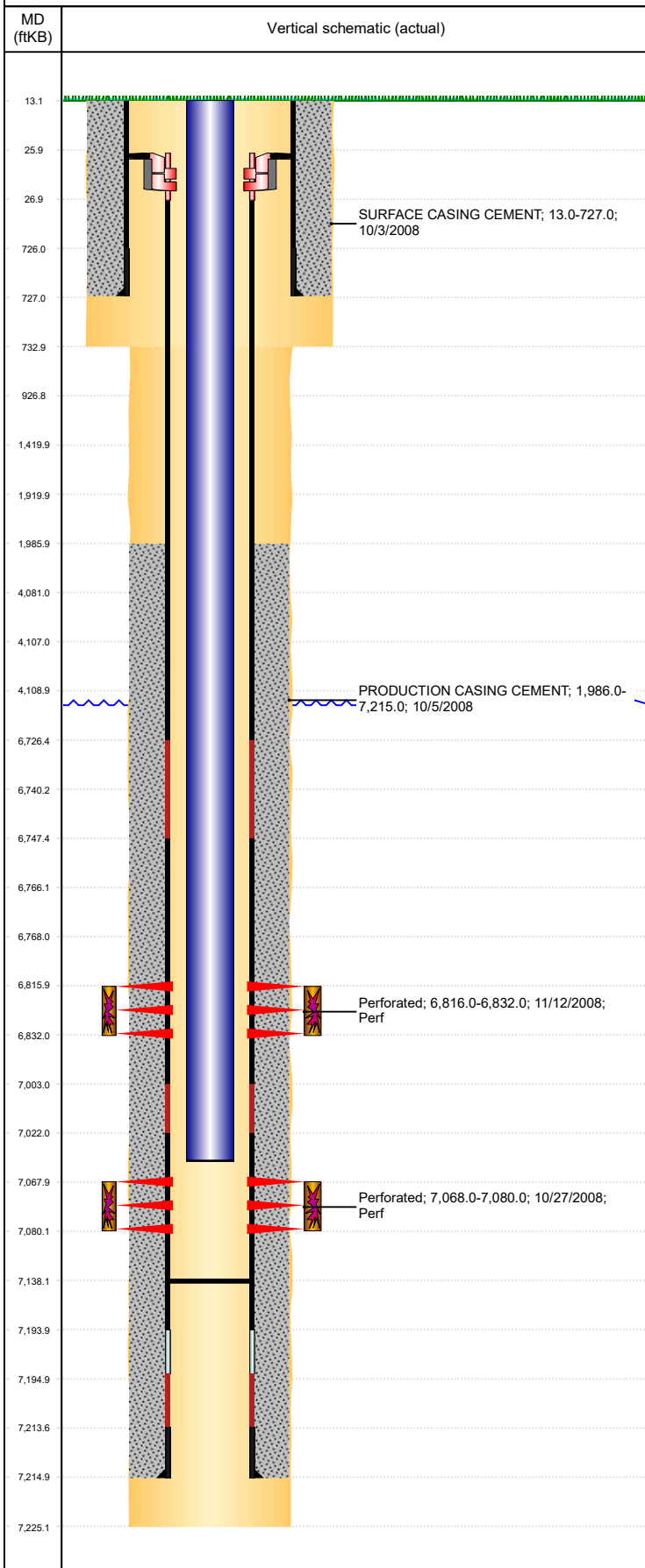


Well Name: RIVA RED D31-06X

VERTICAL, ORIGINAL HOLE, 1/7/2020 8:00:53 AM



Well Header									
API 05-123-29075		Business Unit DJ BASIN		District 15		Well Config VERTICAL			
KB - GL / MSL (ft... 13.00		Spud Date 10/2/2008		P & A Date		Well Production Status SI			SoRT No
Comment									
Surface Location (Congressional)									
Qtr 3 SE	Qtr 4 NW	Section 31	Twnshp 3	Twnsh... N	Range 64	Rng E/... W	Actual Latitude (°) 40.18370065	Actual Longitude (°) -104.59616273	
Wellbore Sections									
Section Des			Size (in)			Act Top, MD (ftKB)		Act Btm, MD (ftKB)	
SURFACE			12 1/4			13		733	
PRODUCTION			7 7/8			733		7,225	
Casing Strings									
Csg Des			Run Date		OD (in)	Wt/Len (lb/ft)	Grade	Top, MD (ftKB)	MD (ftKB)
Surface			10/3/2008		8 5/8	24.00	J-55	13.0	727.0
Production			10/5/2008		4 1/2	11.60	M-80	13.0	7,215.0
Cement									
Des					Start Date		Top (ftKB)		Btm (ftKB)
SURFACE CASING CEMENT					10/3/2008		13.0		727.0
PRODUCTION CASING CEMENT					10/5/2008		1,986.0		7,215.0
Zone Statuses									
Zone Name	Status Date	Status	Fluid Type	Job				Prod Method	
CODELL	11/13/2008	PR	Water	DRILLING/COMPLETION - ORIGINAL, 10/2/2008...				Flowing	
CODELL	3/18/2010	PR							
NIOBRARA	3/18/2010	PR							
NIOBRARA	12/31/2016	SI							
Perforation Data									
Linked Zone		Bnch/Stg	Entered Shot Total	Top (ftKB)		Btm (ftKB)		Date	
NIOBRARA, ORIGINAL HOLE			32	6,816.00		6,832.00		11/12/2008	
CODELL, ORIGINAL HOLE			48	7,068.00		7,080.00		10/27/2008	
Stimulation Intervals									
Zone				Start Date		Top (ftKB)		Btm (ftKB)	
NIOBRARA, ORIGINAL HOLE				11/12/2008		6,816.0		6,832.0	
CODELL, ORIGINAL HOLE				11/12/2008		7,068.0		7,080.0	
Other In Hole									
Run Date		Des				OD (in)	Top (ftKB)		Btm (ftKB)
Logs									
Date		Type				Top, MD (ftKB)		Btm, MD (ftKB)	
10/5/2008		Caliper/Comp. Density/Neutron/GR/SP/ML				2,700.0		7,223.0	
10/5/2008		DIL/GR/SP/Caliper				727.0		7,223.0	
10/27/2008		CBL/CCL/GR				1,840.0		7,154.0	
1/19/2016		GYRO				0.0		6,950.0	
1/19/2016		GYRO				10.0		7,000.0	
Plug Back Total Depths									
Date		Type		Com				Depth (ftKB)	
10/27/2008		FILL						7,154.0	
2/4/2009		PLUG REMNANTS		PUSH PLUG TO THIS POINT				7,138.0	