

CONFLUENCE RESOURCES

Location: COLORADO Slot: SLOT#12 BUFORD 33-6-4L (1010'FSL & 450'FWL,SEC.33)
Field: WELD COUNTY (NAD83, TRUE NORTH) Well: BUFORD 33-6-4L
Facility: SEC.33-T01N-R65W Wellbore: BUFORD 33-6-4L PWB

| | |
|--|--|
| Plot reference wellpath is BUFORD 33-6-4L (REV-A.0) PWP | Grid System: NAD83 / Lambert Colorado SP, Northern Zone (501), US feet |
| True vertical depths are referenced to RIG (20.5) (RKB) | North Reference: True north |
| Measured depths are referenced to RIG (20.5) (RKB) | Scale: True distance |
| RIG (20.5) (RKB) to Mean Sea Level: 5101.5 feet | Depths are in feet |
| Mean Sea Level to Mud line (At Slot: SLOT#12 BUFORD 33-6-4L (1010'FSL & 450'FWL,SEC.33)): 0 feet | Created by: robiala01 on 2019-10-09 |
| Coordinates are in feet referenced to Slot | Database: WA DENVER |

Location Information

| Facility Name | | | | Grid East (US ft) | Grid North (US ft) | Latitude | Longitude |
|--|--------------|--------------|-------------------|--------------------|--------------------|-----------------|-----------------|
| SEC.33-T01N-R65W | | | | 3230456.897 | 1245096.090 | 40°00'11.664"N | 104°40'38.424"W |
| Slot | Local N (ft) | Local E (ft) | Grid East (US ft) | Grid North (US ft) | Latitude | Longitude | |
| SLOT#12 BUFORD 33-6-4L (1010'FSL & 450'FWL,SEC.33) | 25.50 | 148.48 | 3230605.129 | 1245122.966 | 40°00'11.916"N | 104°40'38.516"W | |
| RIG (20.5) (RKB) to Mud line (At Slot: SLOT#12 BUFORD 33-6-4L (1010'FSL & 450'FWL,SEC.33)) | | | | | | 5101.9ft | |
| Mean Sea Level to Mud line (At Slot: SLOT#12 BUFORD 33-6-4L (1010'FSL & 450'FWL,SEC.33)) | | | | | | 0ft | |
| RIG (20.5) (RKB) to Mean Sea Level | | | | | | 5101.9ft | |

Targets

| Name | MD (ft) | TVD (ft) | Local N (ft) | Local E (ft) | Grid East (US ft) | Grid North (US ft) | Latitude | Longitude |
|--|----------|----------|--------------|--------------|-------------------|--------------------|----------------|-----------------|
| SEC.28-T01N-R65W | | 1.50 | -25.50 | -148.48 | 3230456.90 | 1245096.09 | 40°00'11.664"N | 104°40'38.424"W |
| SEC.33-T01N-R65W | | 1.50 | -25.50 | -148.48 | 3230456.90 | 1245096.09 | 40°00'11.664"N | 104°40'38.424"W |
| BUFORD 33-6-4L LP REV-1 (470'FSL & 2637'FWL,SEC.33) | 8347.54 | 7481.50 | -539.05 | 2190.82 | 3232800.78 | 1244604.30 | 40°00'06.588"N | 104°40'08.364"W |
| BUFORD 33-6-4L BHL REV-1 (470'FSL & 2637'FWL,SEC.28) | 18004.82 | 7493.50 | 9118.21 | 2175.97 | 3232696.28 | 1254260.66 | 40°01'42.024"N | 104°40'08.544"W |

Survey Program

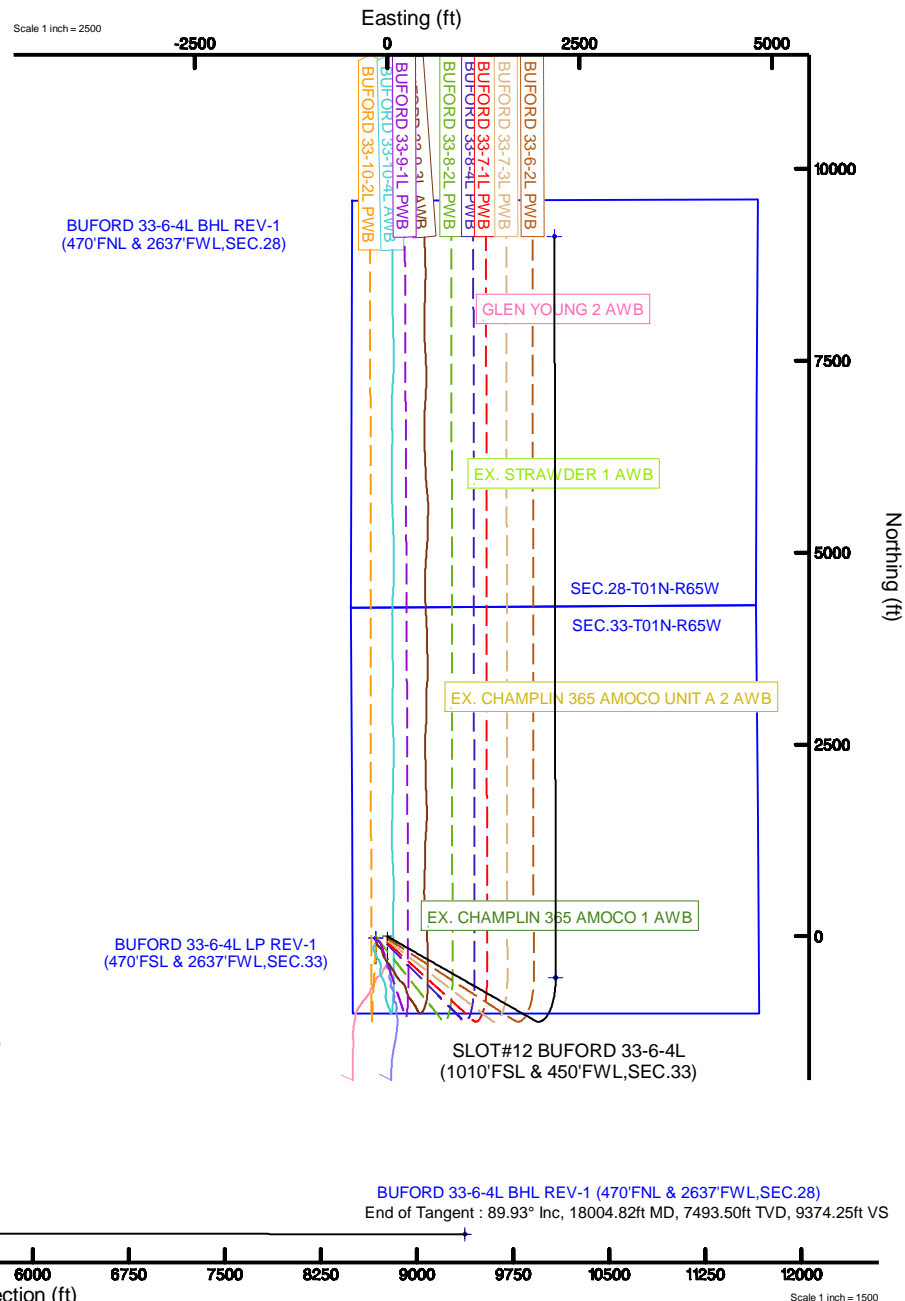
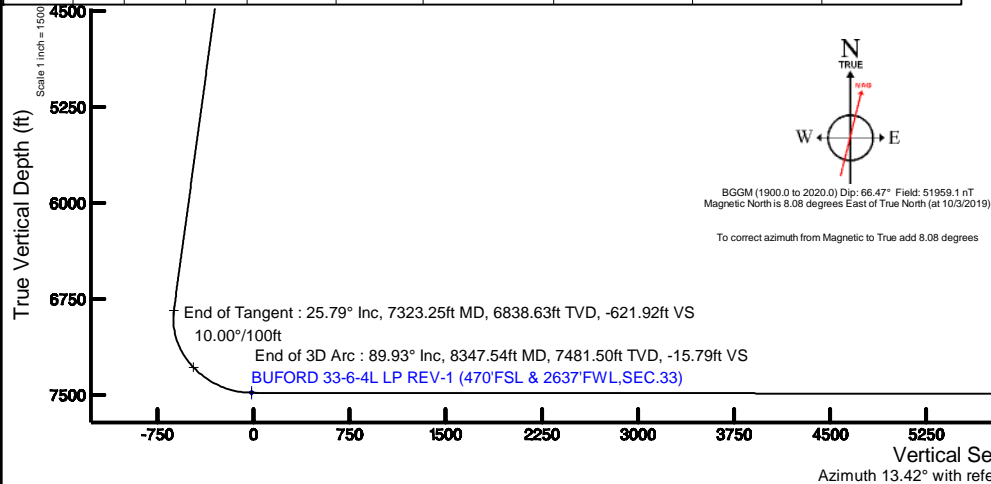
| Start MD (ft) | End MD (ft) | Tool | Model | Log Name/Comment | Wellbore |
|---------------|-------------|--------------------|-----------------------------------|------------------|--------------------|
| 20.50 | 1500.00 | BHI NavTrak | BHI NavTrak (Rotating+Axial Corr) | | BUFORD 33-6-4L PWB |
| 1500.00 | 18004.82 | BHI AutoTrak Curve | BHI AutoTrak Curve (Short) | | BUFORD 33-6-4L PWB |

Well Profile Data

| Design Comment | MD (ft) | Inc (°) | Az (°) | TVD (ft) | Local N (ft) | Local E (ft) | DLS (°/100ft) | VS (ft) |
|----------------|----------|---------|---------|----------|--------------|--------------|---------------|---------|
| Tie On | 20.50 | 0.000 | 119.735 | 20.50 | 0.00 | 0.00 | 0.00 | 0.00 |
| End of Tangent | 1600.00 | 0.000 | 119.735 | 1600.00 | 0.00 | 0.00 | 0.00 | 0.00 |
| End of Build | 2889.34 | 25.787 | 119.735 | 2846.25 | -141.50 | 247.71 | 2.00 | -80.13 |
| End of Tangent | 7323.25 | 25.787 | 119.735 | 6838.63 | -1098.19 | 1922.59 | 0.00 | -621.92 |
| End of 3D Arc | 8347.54 | 89.929 | 359.912 | 7481.50 | -539.05 | 2190.82 | 10.00 | -15.79 |
| End of Tangent | 18004.82 | 89.929 | 359.912 | 7493.50 | 9118.21 | 2175.97 | 0.00 | 9374.25 |

Bottom Hole Location

| MD (ft) | Inc (°) | Az (°) | TVD (ft) | Local N (ft) | Local E (ft) | Grid East (US ft) | Grid North (US ft) | Latitude | Longitude |
|----------|---------|---------|----------|--------------|--------------|-------------------|--------------------|----------------|-----------------|
| 18004.82 | 89.929 | 359.912 | 7493.50 | 9118.21 | 2175.97 | 3232696.28 | 1254260.66 | 40°01'42.024"N | 104°40'08.544"W |



Planned Wellpath Report

BUFORD 33-6-4L (REV-A.0) PWP

Page 1 of 10



REFERENCE WELLPATH IDENTIFICATION

| | | | |
|----------|---------------------------------|----------|--|
| Operator | CONFLUENCE RESOURCES | Slot | SLOT#12 BUFORD 33-6-4L (1010'FSL & 450'FWL,SEC.33) |
| Area | COLORADO | Well | BUFORD 33-6-4L |
| Field | WELD COUNTY (NAD83, TRUE NORTH) | Wellbore | BUFORD 33-6-4L PWB |
| Facility | SEC.33-T01N-R65W | | |

REPORT SETUP INFORMATION

| | | | |
|---------------------|---|----------------------|--|
| Projection System | NAD83 / Lambert Colorado SP, Northern Zone (501), US feet | Software System | WellArchitect® 5.1 |
| North Reference | True | User | Robiale01 |
| Scale | 0.999966 | Report Generated | 10/9/2019 at 4:44:10 PM |
| Convergence at slot | 0.53° East | Database/Source file | WA DENVER/BUFORD_33-6-4L_REV-A.0_PWP.xml |

WELLPATH LOCATION

| | Local coordinates | | Grid coordinates | | Geographic coordinates | |
|-----------------------|-------------------|----------|------------------|-----------------|------------------------|-----------------|
| | North[ft] | East[ft] | Easting[US ft] | Northing[US ft] | Latitude | Longitude |
| Slot Location | 25.50 | 148.48 | 3230605.13 | 1245122.97 | 40°00'11.916"N | 104°40'36.516"W |
| Facility Reference Pt | | | 3230456.90 | 1245096.09 | 40°00'11.664"N | 104°40'38.424"W |
| Field Reference Pt | | | 3230456.90 | 1245096.09 | 40°00'11.664"N | 104°40'38.424"W |

WELLPATH DATUM

| | | | |
|--------------------------|-------------------|--|-------------------|
| Calculation method | Minimum curvature | RIG (20.5') (RKB) to Facility Vertical Datum | 5101.50ft |
| Horizontal Reference Pt | Slot | RIG (20.5') (RKB) to Mean Sea Level | 5101.50ft |
| Vertical Reference Pt | RIG (20.5') (RKB) | RIG (20.5') (RKB) to Mud Line at Slot (SLOT#12 BUFORD 33-6-4L (1010'FSL & 450'FWL,SEC.33)) | 5101.50ft |
| MD Reference Pt | RIG (20.5') (RKB) | Section Origin | N 0.00, E 0.00 ft |
| Field Vertical Reference | Mean Sea Level | Section Azimuth | 13.42° |

Planned Wellpath Report

BUFORD 33-6-4L (REV-A.0) PWP

Page 2 of 10

REFERENCE WELLPATH IDENTIFICATION

| | | | |
|----------|---------------------------------|----------|--|
| Operator | CONFLUENCE RESOURCES | Slot | SLOT#12 BUFORD 33-6-4L (1010'FSL & 450'FWL,SEC.33) |
| Area | COLORADO | Well | BUFORD 33-6-4L |
| Field | WELD COUNTY (NAD83, TRUE NORTH) | Wellbore | BUFORD 33-6-4L PWB |
| Facility | SEC.33-T01N-R65W | | |

WELLPATH DATA (186 stations) † = interpolated/extrapolated station

| MD [ft] | Inclination [°] | Azimuth [°] | TVD [ft] | Vert Sect [ft] | North [ft] | East [ft] | Latitude | Longitude | DLS [°/100ft] | Comments |
|------------|--------------------|----------------|-------------|-------------------|---------------|--------------|----------------|-----------------|------------------|----------------|
| 0.00† | 0.000 | 119.735 | 0.00 | 0.00 | 0.00 | 0.00 | 40°00'11.916"N | 104°40'36.516"W | 0.00 | |
| 20.50 | 0.000 | 119.735 | 20.50 | 0.00 | 0.00 | 0.00 | 40°00'11.916"N | 104°40'36.516"W | 0.00 | Tie On |
| 120.50† | 0.000 | 119.735 | 120.50 | 0.00 | 0.00 | 0.00 | 40°00'11.916"N | 104°40'36.516"W | 0.00 | |
| 220.50† | 0.000 | 119.735 | 220.50 | 0.00 | 0.00 | 0.00 | 40°00'11.916"N | 104°40'36.516"W | 0.00 | |
| 320.50† | 0.000 | 119.735 | 320.50 | 0.00 | 0.00 | 0.00 | 40°00'11.916"N | 104°40'36.516"W | 0.00 | |
| 420.50† | 0.000 | 119.735 | 420.50 | 0.00 | 0.00 | 0.00 | 40°00'11.916"N | 104°40'36.516"W | 0.00 | |
| 520.50† | 0.000 | 119.735 | 520.50 | 0.00 | 0.00 | 0.00 | 40°00'11.916"N | 104°40'36.516"W | 0.00 | |
| 620.50† | 0.000 | 119.735 | 620.50 | 0.00 | 0.00 | 0.00 | 40°00'11.916"N | 104°40'36.516"W | 0.00 | |
| 720.50† | 0.000 | 119.735 | 720.50 | 0.00 | 0.00 | 0.00 | 40°00'11.916"N | 104°40'36.516"W | 0.00 | |
| 820.50† | 0.000 | 119.735 | 820.50 | 0.00 | 0.00 | 0.00 | 40°00'11.916"N | 104°40'36.516"W | 0.00 | |
| 920.50† | 0.000 | 119.735 | 920.50 | 0.00 | 0.00 | 0.00 | 40°00'11.916"N | 104°40'36.516"W | 0.00 | |
| 1020.50† | 0.000 | 119.735 | 1020.50 | 0.00 | 0.00 | 0.00 | 40°00'11.916"N | 104°40'36.516"W | 0.00 | |
| 1120.50† | 0.000 | 119.735 | 1120.50 | 0.00 | 0.00 | 0.00 | 40°00'11.916"N | 104°40'36.516"W | 0.00 | |
| 1220.50† | 0.000 | 119.735 | 1220.50 | 0.00 | 0.00 | 0.00 | 40°00'11.916"N | 104°40'36.516"W | 0.00 | |
| 1320.50† | 0.000 | 119.735 | 1320.50 | 0.00 | 0.00 | 0.00 | 40°00'11.916"N | 104°40'36.516"W | 0.00 | |
| 1420.50† | 0.000 | 119.735 | 1420.50 | 0.00 | 0.00 | 0.00 | 40°00'11.916"N | 104°40'36.516"W | 0.00 | |
| 1520.50† | 0.000 | 119.735 | 1520.50 | 0.00 | 0.00 | 0.00 | 40°00'11.916"N | 104°40'36.516"W | 0.00 | |
| 1600.00 | 0.000 | 119.735 | 1600.00 | 0.00 | 0.00 | 0.00 | 40°00'11.916"N | 104°40'36.516"W | 0.00 | End of Tangent |
| 1620.50† | 0.410 | 119.735 | 1620.50 | -0.02 | -0.04 | 0.06 | 40°00'11.916"N | 104°40'36.515"W | 2.00 | |
| 1720.50† | 2.410 | 119.735 | 1720.46 | -0.71 | -1.26 | 2.20 | 40°00'11.904"N | 104°40'36.488"W | 2.00 | |
| 1820.50† | 4.410 | 119.735 | 1820.28 | -2.38 | -4.21 | 7.36 | 40°00'11.874"N | 104°40'36.421"W | 2.00 | |
| 1920.50† | 6.410 | 119.735 | 1919.83 | -5.03 | -8.88 | 15.55 | 40°00'11.828"N | 104°40'36.316"W | 2.00 | |
| 2020.50† | 8.410 | 119.735 | 2018.99 | -8.65 | -15.28 | 26.75 | 40°00'11.765"N | 104°40'36.172"W | 2.00 | |
| 2120.50† | 10.410 | 119.735 | 2117.64 | -13.25 | -23.39 | 40.95 | 40°00'11.685"N | 104°40'35.990"W | 2.00 | |
| 2220.50† | 12.410 | 119.735 | 2215.66 | -18.80 | -33.20 | 58.12 | 40°00'11.588"N | 104°40'35.769"W | 2.00 | |
| 2320.50† | 14.410 | 119.735 | 2312.93 | -25.32 | -44.70 | 78.26 | 40°00'11.474"N | 104°40'35.510"W | 2.00 | |
| 2420.50† | 16.410 | 119.735 | 2409.33 | -32.78 | -57.88 | 101.33 | 40°00'11.344"N | 104°40'35.214"W | 2.00 | |
| 2520.50† | 18.410 | 119.735 | 2504.74 | -41.18 | -72.72 | 127.31 | 40°00'11.197"N | 104°40'34.880"W | 2.00 | |
| 2620.50† | 20.410 | 119.735 | 2599.05 | -50.52 | -89.20 | 156.17 | 40°00'11.034"N | 104°40'34.509"W | 2.00 | |
| 2720.50† | 22.410 | 119.735 | 2692.15 | -60.77 | -107.31 | 187.86 | 40°00'10.856"N | 104°40'34.102"W | 2.00 | |

Planned Wellpath Report

BUFORD 33-6-4L (REV-A.0) PWP

Page 3 of 10



REFERENCE WELLPATH IDENTIFICATION

| | | | |
|----------|---------------------------------|----------|--|
| Operator | CONFLUENCE RESOURCES | Slot | SLOT#12 BUFORD 33-6-4L (1010'FSL & 450'FWL,SEC.33) |
| Area | COLORADO | Well | BUFORD 33-6-4L |
| Field | WELD COUNTY (NAD83, TRUE NORTH) | Wellbore | BUFORD 33-6-4L PWB |
| Facility | SEC.33-T01N-R65W | | |

WELLPATH DATA (186 stations) † = interpolated/extrapolated station

| MD [ft] | Inclination [°] | Azimuth [°] | TVD [ft] | Vert Sect [ft] | North [ft] | East [ft] | Latitude | Longitude | DLS [°/100ft] | Comments |
|------------|--------------------|----------------|-------------|-------------------|---------------|--------------|----------------|-----------------|------------------|--------------|
| 2820.50† | 24.410 | 119.735 | 2783.91 | -71.93 | -127.01 | 222.36 | 40°00'10.661"N | 104°40'33.659"W | 2.00 | |
| 2889.34 | 25.787 | 119.735 | 2846.25 | -80.13 | -141.50 | 247.71 | 40°00'10.518"N | 104°40'33.333"W | 2.00 | End of Build |
| 2920.50† | 25.787 | 119.735 | 2874.31 | -83.94 | -148.22 | 259.49 | 40°00'10.451"N | 104°40'33.182"W | 0.00 | |
| 3020.50† | 25.787 | 119.735 | 2964.35 | -96.16 | -169.80 | 297.26 | 40°00'10.238"N | 104°40'32.696"W | 0.00 | |
| 3120.50† | 25.787 | 119.735 | 3054.39 | -108.38 | -191.37 | 335.03 | 40°00'10.025"N | 104°40'32.211"W | 0.00 | |
| 3220.50† | 25.787 | 119.735 | 3144.43 | -120.60 | -212.95 | 372.81 | 40°00'09.812"N | 104°40'31.725"W | 0.00 | |
| 3320.50† | 25.787 | 119.735 | 3234.48 | -132.82 | -234.53 | 410.58 | 40°00'09.598"N | 104°40'31.240"W | 0.00 | |
| 3420.50† | 25.787 | 119.735 | 3324.52 | -145.03 | -256.10 | 448.36 | 40°00'09.385"N | 104°40'30.755"W | 0.00 | |
| 3520.50† | 25.787 | 119.735 | 3414.56 | -157.25 | -277.68 | 486.13 | 40°00'09.172"N | 104°40'30.269"W | 0.00 | |
| 3620.50† | 25.787 | 119.735 | 3504.60 | -169.47 | -299.26 | 523.91 | 40°00'08.959"N | 104°40'29.784"W | 0.00 | |
| 3720.50† | 25.787 | 119.735 | 3594.64 | -181.69 | -320.83 | 561.68 | 40°00'08.745"N | 104°40'29.298"W | 0.00 | |
| 3820.50† | 25.787 | 119.735 | 3684.69 | -193.91 | -342.41 | 599.45 | 40°00'08.532"N | 104°40'28.813"W | 0.00 | |
| 3920.50† | 25.787 | 119.735 | 3774.73 | -206.13 | -363.99 | 637.23 | 40°00'08.319"N | 104°40'28.328"W | 0.00 | |
| 4020.50† | 25.787 | 119.735 | 3864.77 | -218.35 | -385.56 | 675.00 | 40°00'08.106"N | 104°40'27.842"W | 0.00 | |
| 4120.50† | 25.787 | 119.735 | 3954.81 | -230.57 | -407.14 | 712.78 | 40°00'07.892"N | 104°40'27.357"W | 0.00 | |
| 4220.50† | 25.787 | 119.735 | 4044.85 | -242.79 | -428.72 | 750.55 | 40°00'07.679"N | 104°40'26.871"W | 0.00 | |
| 4320.50† | 25.787 | 119.735 | 4134.89 | -255.01 | -450.29 | 788.33 | 40°00'07.466"N | 104°40'26.386"W | 0.00 | |
| 4420.50† | 25.787 | 119.735 | 4224.94 | -267.23 | -471.87 | 826.10 | 40°00'07.253"N | 104°40'25.901"W | 0.00 | |
| 4520.50† | 25.787 | 119.735 | 4314.98 | -279.45 | -493.45 | 863.87 | 40°00'07.039"N | 104°40'25.415"W | 0.00 | |
| 4620.50† | 25.787 | 119.735 | 4405.02 | -291.67 | -515.03 | 901.65 | 40°00'06.826"N | 104°40'24.930"W | 0.00 | |
| 4720.50† | 25.787 | 119.735 | 4495.06 | -303.89 | -536.60 | 939.42 | 40°00'06.613"N | 104°40'24.444"W | 0.00 | |
| 4820.50† | 25.787 | 119.735 | 4585.10 | -316.10 | -558.18 | 977.20 | 40°00'06.400"N | 104°40'23.959"W | 0.00 | |
| 4920.50† | 25.787 | 119.735 | 4675.15 | -328.32 | -579.76 | 1014.97 | 40°00'06.186"N | 104°40'23.474"W | 0.00 | |
| 5020.50† | 25.787 | 119.735 | 4765.19 | -340.54 | -601.33 | 1052.75 | 40°00'05.973"N | 104°40'22.988"W | 0.00 | |
| 5120.50† | 25.787 | 119.735 | 4855.23 | -352.76 | -622.91 | 1090.52 | 40°00'05.760"N | 104°40'22.503"W | 0.00 | |
| 5220.50† | 25.787 | 119.735 | 4945.27 | -364.98 | -644.49 | 1128.29 | 40°00'05.547"N | 104°40'22.018"W | 0.00 | |
| 5320.50† | 25.787 | 119.735 | 5035.31 | -377.20 | -666.06 | 1166.07 | 40°00'05.333"N | 104°40'21.532"W | 0.00 | |
| 5420.50† | 25.787 | 119.735 | 5125.36 | -389.42 | -687.64 | 1203.84 | 40°00'05.120"N | 104°40'21.047"W | 0.00 | |
| 5520.50† | 25.787 | 119.735 | 5215.40 | -401.64 | -709.22 | 1241.62 | 40°00'04.907"N | 104°40'20.561"W | 0.00 | |
| 5620.50† | 25.787 | 119.735 | 5305.44 | -413.86 | -730.79 | 1279.39 | 40°00'04.694"N | 104°40'20.076"W | 0.00 | |

Planned Wellpath Report

BUFORD 33-6-4L (REV-A.0) PWP

Page 4 of 10

REFERENCE WELLPATH IDENTIFICATION

| | | | |
|----------|---------------------------------|----------|--|
| Operator | CONFLUENCE RESOURCES | Slot | SLOT#12 BUFORD 33-6-4L (1010'FSL & 450'FWL,SEC.33) |
| Area | COLORADO | Well | BUFORD 33-6-4L |
| Field | WELD COUNTY (NAD83, TRUE NORTH) | Wellbore | BUFORD 33-6-4L PWB |
| Facility | SEC.33-T01N-R65W | | |

WELLPATH DATA (186 stations) † = interpolated/extrapolated station

| MD [ft] | Inclination [°] | Azimuth [°] | TVD [ft] | Vert Sect [ft] | North [ft] | East [ft] | Latitude | Longitude | DLS [°/100ft] | Comments |
|------------|--------------------|----------------|----------------------|-------------------|---------------|--------------|----------------|-----------------|------------------|----------------|
| 5720.50† | 25.787 | 119.735 | 5395.48 | -426.08 | -752.37 | 1317.17 | 40°00'04.480"N | 104°40'19.591"W | 0.00 | |
| 5820.50† | 25.787 | 119.735 | 5485.52 | -438.30 | -773.95 | 1354.94 | 40°00'04.267"N | 104°40'19.105"W | 0.00 | |
| 5920.50† | 25.787 | 119.735 | 5575.57 | -450.52 | -795.52 | 1392.71 | 40°00'04.054"N | 104°40'18.620"W | 0.00 | |
| 6020.50† | 25.787 | 119.735 | 5665.61 | -462.74 | -817.10 | 1430.49 | 40°00'03.841"N | 104°40'18.134"W | 0.00 | |
| 6120.50† | 25.787 | 119.735 | 5755.65 | -474.95 | -838.68 | 1468.26 | 40°00'03.627"N | 104°40'17.649"W | 0.00 | |
| 6220.50† | 25.787 | 119.735 | 5845.69 | -487.17 | -860.25 | 1506.04 | 40°00'03.414"N | 104°40'17.164"W | 0.00 | |
| 6320.50† | 25.787 | 119.735 | 5935.73 | -499.39 | -881.83 | 1543.81 | 40°00'03.201"N | 104°40'16.678"W | 0.00 | |
| 6420.50† | 25.787 | 119.735 | 6025.77 | -511.61 | -903.41 | 1581.59 | 40°00'02.988"N | 104°40'16.193"W | 0.00 | |
| 6520.50† | 25.787 | 119.735 | 6115.82 | -523.83 | -924.98 | 1619.36 | 40°00'02.774"N | 104°40'15.708"W | 0.00 | |
| 6620.50† | 25.787 | 119.735 | 6205.86 | -536.05 | -946.56 | 1657.13 | 40°00'02.561"N | 104°40'15.222"W | 0.00 | |
| 6720.50† | 25.787 | 119.735 | 6295.90 | -548.27 | -968.14 | 1694.91 | 40°00'02.348"N | 104°40'14.737"W | 0.00 | |
| 6820.50† | 25.787 | 119.735 | 6385.94 | -560.49 | -989.72 | 1732.68 | 40°00'02.135"N | 104°40'14.251"W | 0.00 | |
| 6920.50† | 25.787 | 119.735 | 6475.98 | -572.71 | -1011.29 | 1770.46 | 40°00'01.921"N | 104°40'13.766"W | 0.00 | |
| 7020.50† | 25.787 | 119.735 | 6566.03 | -584.93 | -1032.87 | 1808.23 | 40°00'01.708"N | 104°40'13.281"W | 0.00 | |
| 7120.50† | 25.787 | 119.735 | 6656.07 | -597.15 | -1054.45 | 1846.01 | 40°00'01.495"N | 104°40'12.795"W | 0.00 | |
| 7220.50† | 25.787 | 119.735 | 6746.11 | -609.37 | -1076.02 | 1883.78 | 40°00'01.282"N | 104°40'12.310"W | 0.00 | |
| 7320.50† | 25.787 | 119.735 | 6836.15 | -621.59 | -1097.60 | 1921.55 | 40°00'01.068"N | 104°40'11.825"W | 0.00 | |
| 7323.25 | 25.787 | 119.735 | 6838.63 | -621.92 | -1098.19 | 1922.59 | 40°00'01.063"N | 104°40'11.811"W | 0.00 | End of Tangent |
| 7420.50† | 22.895 | 97.047 | 6927.42 | -625.77 | -1111.04 | 1959.82 | 40°00'00.936"N | 104°40'11.333"W | 10.00 | |
| 7520.50† | 23.795 | 71.736 | 7019.46 | -612.98 | -1107.09 | 1998.38 | 40°00'00.975"N | 104°40'10.837"W | 10.00 | |
| 7620.50† | 28.241 | 51.156 | 7109.49 | -583.60 | -1085.87 | 2036.06 | 40°00'01.184"N | 104°40'10.353"W | 10.00 | |
| 7720.50† | 34.898 | 36.802 | 7194.76 | -538.52 | -1048.03 | 2071.72 | 40°00'01.558"N | 104°40'09.895"W | 10.00 | |
| 7820.50† | 42.738 | 26.849 | 7272.69 | -479.11 | -994.72 | 2104.26 | 40°00'02.085"N | 104°40'09.477"W | 10.00 | |
| 7920.50† | 51.213 | 19.561 | 7340.91 | -407.17 | -927.55 | 2132.71 | 40°00'02.749"N | 104°40'09.111"W | 10.00 | |
| 8020.50† | 60.042 | 13.858 | 7397.34 | -324.89 | -848.57 | 2156.19 | 40°00'03.529"N | 104°40'08.809"W | 10.00 | |
| 8120.50† | 69.076 | 9.101 | 7440.28 | -234.77 | -760.17 | 2174.00 | 40°00'04.403"N | 104°40'08.580"W | 10.00 | |
| 8220.50† | 78.227 | 4.892 | 7468.41 | -139.55 | -665.04 | 2185.59 | 40°00'05.343"N | 104°40'08.431"W | 10.00 | |
| 8320.50† | 87.435 | 0.958 | 7480.88 | -42.13 | -566.08 | 2190.62 | 40°00'06.321"N | 104°40'08.367"W | 10.00 | |
| 8347.54 | 89.929 | 359.912 | 7481.50 [†] | -15.79 | -539.05 | 2190.82 | 40°00'06.588"N | 104°40'08.364"W | 10.00 | End of 3D Arc |
| 8420.50† | 89.929 | 359.912 | 7481.59 | 55.15 | -466.09 | 2190.71 | 40°00'07.309"N | 104°40'08.365"W | 0.00 | |

Planned Wellpath Report

BUFORD 33-6-4L (REV-A.0) PWP

Page 5 of 10

REFERENCE WELLPATH IDENTIFICATION

| | | | |
|----------|---------------------------------|----------|--|
| Operator | CONFLUENCE RESOURCES | Slot | SLOT#12 BUFORD 33-6-4L (1010'FSL & 450'FWL,SEC.33) |
| Area | COLORADO | Well | BUFORD 33-6-4L |
| Field | WELD COUNTY (NAD83, TRUE NORTH) | Wellbore | BUFORD 33-6-4L PWB |
| Facility | SEC.33-T01N-R65W | | |

WELLPATH DATA (186 stations) † = interpolated/extrapolated station

| MD [ft] | Inclination [°] | Azimuth [°] | TVD [ft] | Vert Sect [ft] | North [ft] | East [ft] | Latitude | Longitude | DLS [°/100ft] | Comments |
|------------|--------------------|----------------|-------------|-------------------|---------------|--------------|----------------|-----------------|------------------|----------|
| 8520.50† | 89.929 | 359.912 | 7481.71 | 152.39 | -366.09 | 2190.55 | 40°00'08.297"N | 104°40'08.367"W | 0.00 | |
| 8620.50† | 89.929 | 359.912 | 7481.84 | 249.62 | -266.09 | 2190.40 | 40°00'09.285"N | 104°40'08.369"W | 0.00 | |
| 8720.50† | 89.929 | 359.912 | 7481.96 | 346.85 | -166.09 | 2190.25 | 40°00'10.274"N | 104°40'08.371"W | 0.00 | |
| 8820.50† | 89.929 | 359.912 | 7482.09 | 444.08 | -66.09 | 2190.09 | 40°00'11.262"N | 104°40'08.373"W | 0.00 | |
| 8920.50† | 89.929 | 359.912 | 7482.21 | 541.32 | 33.91 | 2189.94 | 40°00'12.250"N | 104°40'08.375"W | 0.00 | |
| 9020.50† | 89.929 | 359.912 | 7482.34 | 638.55 | 133.91 | 2189.79 | 40°00'13.238"N | 104°40'08.377"W | 0.00 | |
| 9120.50† | 89.929 | 359.912 | 7482.46 | 735.78 | 233.91 | 2189.63 | 40°00'14.227"N | 104°40'08.378"W | 0.00 | |
| 9220.50† | 89.929 | 359.912 | 7482.58 | 833.01 | 333.91 | 2189.48 | 40°00'15.215"N | 104°40'08.380"W | 0.00 | |
| 9320.50† | 89.929 | 359.912 | 7482.71 | 930.25 | 433.91 | 2189.32 | 40°00'16.203"N | 104°40'08.382"W | 0.00 | |
| 9420.50† | 89.929 | 359.912 | 7482.83 | 1027.48 | 533.91 | 2189.17 | 40°00'17.191"N | 104°40'08.384"W | 0.00 | |
| 9520.50† | 89.929 | 359.912 | 7482.96 | 1124.71 | 633.91 | 2189.02 | 40°00'18.180"N | 104°40'08.386"W | 0.00 | |
| 9620.50† | 89.929 | 359.912 | 7483.08 | 1221.95 | 733.91 | 2188.86 | 40°00'19.168"N | 104°40'08.388"W | 0.00 | |
| 9720.50† | 89.929 | 359.912 | 7483.21 | 1319.18 | 833.91 | 2188.71 | 40°00'20.156"N | 104°40'08.390"W | 0.00 | |
| 9820.50† | 89.929 | 359.912 | 7483.33 | 1416.41 | 933.91 | 2188.56 | 40°00'21.144"N | 104°40'08.391"W | 0.00 | |
| 9920.50† | 89.929 | 359.912 | 7483.45 | 1513.64 | 1033.91 | 2188.40 | 40°00'22.132"N | 104°40'08.393"W | 0.00 | |
| 10020.50† | 89.929 | 359.912 | 7483.58 | 1610.88 | 1133.91 | 2188.25 | 40°00'23.121"N | 104°40'08.395"W | 0.00 | |
| 10120.50† | 89.929 | 359.912 | 7483.70 | 1708.11 | 1233.91 | 2188.09 | 40°00'24.109"N | 104°40'08.397"W | 0.00 | |
| 10220.50† | 89.929 | 359.912 | 7483.83 | 1805.34 | 1333.91 | 2187.94 | 40°00'25.097"N | 104°40'08.399"W | 0.00 | |
| 10320.50† | 89.929 | 359.912 | 7483.95 | 1902.58 | 1433.91 | 2187.79 | 40°00'26.085"N | 104°40'08.401"W | 0.00 | |
| 10420.50† | 89.929 | 359.912 | 7484.08 | 1999.81 | 1533.91 | 2187.63 | 40°00'27.074"N | 104°40'08.403"W | 0.00 | |
| 10520.50† | 89.929 | 359.912 | 7484.20 | 2097.04 | 1633.91 | 2187.48 | 40°00'28.062"N | 104°40'08.404"W | 0.00 | |
| 10620.50† | 89.929 | 359.912 | 7484.32 | 2194.27 | 1733.91 | 2187.32 | 40°00'29.050"N | 104°40'08.406"W | 0.00 | |
| 10720.50† | 89.929 | 359.912 | 7484.45 | 2291.51 | 1833.91 | 2187.17 | 40°00'30.038"N | 104°40'08.408"W | 0.00 | |
| 10820.50† | 89.929 | 359.912 | 7484.57 | 2388.74 | 1933.91 | 2187.02 | 40°00'31.027"N | 104°40'08.410"W | 0.00 | |
| 10920.50† | 89.929 | 359.912 | 7484.70 | 2485.97 | 2033.91 | 2186.86 | 40°00'32.015"N | 104°40'08.412"W | 0.00 | |
| 11020.50† | 89.929 | 359.912 | 7484.82 | 2583.20 | 2133.91 | 2186.71 | 40°00'33.003"N | 104°40'08.414"W | 0.00 | |
| 11120.50† | 89.929 | 359.912 | 7484.95 | 2680.44 | 2233.91 | 2186.56 | 40°00'33.991"N | 104°40'08.416"W | 0.00 | |
| 11220.50† | 89.929 | 359.912 | 7485.07 | 2777.67 | 2333.91 | 2186.40 | 40°00'34.979"N | 104°40'08.418"W | 0.00 | |
| 11320.50† | 89.929 | 359.912 | 7485.19 | 2874.90 | 2433.91 | 2186.25 | 40°00'35.968"N | 104°40'08.419"W | 0.00 | |
| 11420.50† | 89.929 | 359.912 | 7485.32 | 2972.14 | 2533.91 | 2186.09 | 40°00'36.956"N | 104°40'08.421"W | 0.00 | |

Planned Wellpath Report

BUFORD 33-6-4L (REV-A.0) PWP

Page 6 of 10



REFERENCE WELLPATH IDENTIFICATION

| | | | |
|----------|---------------------------------|----------|--|
| Operator | CONFLUENCE RESOURCES | Slot | SLOT#12 BUFORD 33-6-4L (1010'FSL & 450'FWL,SEC.33) |
| Area | COLORADO | Well | BUFORD 33-6-4L |
| Field | WELD COUNTY (NAD83, TRUE NORTH) | Wellbore | BUFORD 33-6-4L PWB |
| Facility | SEC.33-T01N-R65W | | |

WELLPATH DATA (186 stations) † = interpolated/extrapolated station

| MD [ft] | Inclination [°] | Azimuth [°] | TVD [ft] | Vert Sect [ft] | North [ft] | East [ft] | Latitude | Longitude | DLS [°/100ft] | Comments |
|------------|--------------------|----------------|-------------|-------------------|---------------|--------------|----------------|-----------------|------------------|----------|
| 11520.50† | 89.929 | 359.912 | 7485.44 | 3069.37 | 2633.91 | 2185.94 | 40°00'37.944"N | 104°40'08.423"W | 0.00 | |
| 11620.50† | 89.929 | 359.912 | 7485.57 | 3166.60 | 2733.90 | 2185.79 | 40°00'38.932"N | 104°40'08.425"W | 0.00 | |
| 11720.50† | 89.929 | 359.912 | 7485.69 | 3263.83 | 2833.90 | 2185.63 | 40°00'39.921"N | 104°40'08.427"W | 0.00 | |
| 11820.50† | 89.929 | 359.912 | 7485.82 | 3361.07 | 2933.90 | 2185.48 | 40°00'40.909"N | 104°40'08.429"W | 0.00 | |
| 11920.50† | 89.929 | 359.912 | 7485.94 | 3458.30 | 3033.90 | 2185.33 | 40°00'41.897"N | 104°40'08.431"W | 0.00 | |
| 12020.50† | 89.929 | 359.912 | 7486.06 | 3555.53 | 3133.90 | 2185.17 | 40°00'42.885"N | 104°40'08.432"W | 0.00 | |
| 12120.50† | 89.929 | 359.912 | 7486.19 | 3652.77 | 3233.90 | 2185.02 | 40°00'43.873"N | 104°40'08.434"W | 0.00 | |
| 12220.50† | 89.929 | 359.912 | 7486.31 | 3750.00 | 3333.90 | 2184.86 | 40°00'44.862"N | 104°40'08.436"W | 0.00 | |
| 12320.50† | 89.929 | 359.912 | 7486.44 | 3847.23 | 3433.90 | 2184.71 | 40°00'45.850"N | 104°40'08.438"W | 0.00 | |
| 12420.50† | 89.929 | 359.912 | 7486.56 | 3944.46 | 3533.90 | 2184.56 | 40°00'46.838"N | 104°40'08.440"W | 0.00 | |
| 12520.50† | 89.929 | 359.912 | 7486.69 | 4041.70 | 3633.90 | 2184.40 | 40°00'47.826"N | 104°40'08.442"W | 0.00 | |
| 12620.50† | 89.929 | 359.912 | 7486.81 | 4138.93 | 3733.90 | 2184.25 | 40°00'48.815"N | 104°40'08.444"W | 0.00 | |
| 12720.50† | 89.929 | 359.912 | 7486.93 | 4236.16 | 3833.90 | 2184.09 | 40°00'49.803"N | 104°40'08.445"W | 0.00 | |
| 12820.50† | 89.929 | 359.912 | 7487.06 | 4333.39 | 3933.90 | 2183.94 | 40°00'50.791"N | 104°40'08.447"W | 0.00 | |
| 12920.50† | 89.929 | 359.912 | 7487.18 | 4430.63 | 4033.90 | 2183.79 | 40°00'51.779"N | 104°40'08.449"W | 0.00 | |
| 13020.50† | 89.929 | 359.912 | 7487.31 | 4527.86 | 4133.90 | 2183.63 | 40°00'52.768"N | 104°40'08.451"W | 0.00 | |
| 13120.50† | 89.929 | 359.912 | 7487.43 | 4625.09 | 4233.90 | 2183.48 | 40°00'53.756"N | 104°40'08.453"W | 0.00 | |
| 13220.50† | 89.929 | 359.912 | 7487.56 | 4722.33 | 4333.90 | 2183.33 | 40°00'54.744"N | 104°40'08.455"W | 0.00 | |
| 13320.50† | 89.929 | 359.912 | 7487.68 | 4819.56 | 4433.90 | 2183.17 | 40°00'55.732"N | 104°40'08.457"W | 0.00 | |
| 13420.50† | 89.929 | 359.912 | 7487.80 | 4916.79 | 4533.90 | 2183.02 | 40°00'56.720"N | 104°40'08.459"W | 0.00 | |
| 13520.50† | 89.929 | 359.912 | 7487.93 | 5014.02 | 4633.90 | 2182.86 | 40°00'57.709"N | 104°40'08.460"W | 0.00 | |
| 13620.50† | 89.929 | 359.912 | 7488.05 | 5111.26 | 4733.90 | 2182.71 | 40°00'58.697"N | 104°40'08.462"W | 0.00 | |
| 13720.50† | 89.929 | 359.912 | 7488.18 | 5208.49 | 4833.90 | 2182.56 | 40°00'59.685"N | 104°40'08.464"W | 0.00 | |
| 13820.50† | 89.929 | 359.912 | 7488.30 | 5305.72 | 4933.90 | 2182.40 | 40°01'00.673"N | 104°40'08.466"W | 0.00 | |
| 13920.50† | 89.929 | 359.912 | 7488.42 | 5402.96 | 5033.90 | 2182.25 | 40°01'01.662"N | 104°40'08.468"W | 0.00 | |
| 14020.50† | 89.929 | 359.912 | 7488.55 | 5500.19 | 5133.90 | 2182.10 | 40°01'02.650"N | 104°40'08.470"W | 0.00 | |
| 14120.50† | 89.929 | 359.912 | 7488.67 | 5597.42 | 5233.90 | 2181.94 | 40°01'03.638"N | 104°40'08.472"W | 0.00 | |
| 14220.50† | 89.929 | 359.912 | 7488.80 | 5694.65 | 5333.90 | 2181.79 | 40°01'04.626"N | 104°40'08.473"W | 0.00 | |
| 14320.50† | 89.929 | 359.912 | 7488.92 | 5791.89 | 5433.90 | 2181.63 | 40°01'05.615"N | 104°40'08.475"W | 0.00 | |
| 14420.50† | 89.929 | 359.912 | 7489.05 | 5889.12 | 5533.90 | 2181.48 | 40°01'06.603"N | 104°40'08.477"W | 0.00 | |

Planned Wellpath Report

BUFORD 33-6-4L (REV-A.0) PWP

Page 7 of 10

REFERENCE WELLPATH IDENTIFICATION

| | | | |
|----------|---------------------------------|----------|--|
| Operator | CONFLUENCE RESOURCES | Slot | SLOT#12 BUFORD 33-6-4L (1010'FSL & 450'FWL,SEC.33) |
| Area | COLORADO | Well | BUFORD 33-6-4L |
| Field | WELD COUNTY (NAD83, TRUE NORTH) | Wellbore | BUFORD 33-6-4L PWB |
| Facility | SEC.33-T01N-R65W | | |

WELLPATH DATA (186 stations) † = interpolated/extrapolated station

| MD [ft] | Inclination [°] | Azimuth [°] | TVD [ft] | Vert Sect [ft] | North [ft] | East [ft] | Latitude | Longitude | DLS [°/100ft] | Comments |
|------------|--------------------|----------------|-------------|-------------------|---------------|--------------|----------------|-----------------|------------------|----------|
| 14520.50† | 89.929 | 359.912 | 7489.17 | 5986.35 | 5633.90 | 2181.33 | 40°01'07.591"N | 104°40'08.479"W | 0.00 | |
| 14620.50† | 89.929 | 359.912 | 7489.29 | 6083.59 | 5733.90 | 2181.17 | 40°01'08.579"N | 104°40'08.481"W | 0.00 | |
| 14720.50† | 89.929 | 359.912 | 7489.42 | 6180.82 | 5833.90 | 2181.02 | 40°01'09.567"N | 104°40'08.483"W | 0.00 | |
| 14820.50† | 89.929 | 359.912 | 7489.54 | 6278.05 | 5933.90 | 2180.86 | 40°01'10.556"N | 104°40'08.485"W | 0.00 | |
| 14920.50† | 89.929 | 359.912 | 7489.67 | 6375.28 | 6033.90 | 2180.71 | 40°01'11.544"N | 104°40'08.486"W | 0.00 | |
| 15020.50† | 89.929 | 359.912 | 7489.79 | 6472.52 | 6133.90 | 2180.56 | 40°01'12.532"N | 104°40'08.488"W | 0.00 | |
| 15120.50† | 89.929 | 359.912 | 7489.92 | 6569.75 | 6233.90 | 2180.40 | 40°01'13.520"N | 104°40'08.490"W | 0.00 | |
| 15220.50† | 89.929 | 359.912 | 7490.04 | 6666.98 | 6333.90 | 2180.25 | 40°01'14.509"N | 104°40'08.492"W | 0.00 | |
| 15320.50† | 89.929 | 359.912 | 7490.16 | 6764.21 | 6433.90 | 2180.10 | 40°01'15.497"N | 104°40'08.494"W | 0.00 | |
| 15420.50† | 89.929 | 359.912 | 7490.29 | 6861.45 | 6533.90 | 2179.94 | 40°01'16.485"N | 104°40'08.496"W | 0.00 | |
| 15520.50† | 89.929 | 359.912 | 7490.41 | 6958.68 | 6633.90 | 2179.79 | 40°01'17.473"N | 104°40'08.498"W | 0.00 | |
| 15620.50† | 89.929 | 359.912 | 7490.54 | 7055.91 | 6733.90 | 2179.63 | 40°01'18.461"N | 104°40'08.500"W | 0.00 | |
| 15720.50† | 89.929 | 359.912 | 7490.66 | 7153.15 | 6833.90 | 2179.48 | 40°01'19.450"N | 104°40'08.501"W | 0.00 | |
| 15820.50† | 89.929 | 359.912 | 7490.79 | 7250.38 | 6933.90 | 2179.33 | 40°01'20.438"N | 104°40'08.503"W | 0.00 | |
| 15920.50† | 89.929 | 359.912 | 7490.91 | 7347.61 | 7033.90 | 2179.17 | 40°01'21.426"N | 104°40'08.505"W | 0.00 | |
| 16020.50† | 89.929 | 359.912 | 7491.03 | 7444.84 | 7133.90 | 2179.02 | 40°01'22.414"N | 104°40'08.507"W | 0.00 | |
| 16120.50† | 89.929 | 359.912 | 7491.16 | 7542.08 | 7233.90 | 2178.87 | 40°01'23.403"N | 104°40'08.509"W | 0.00 | |
| 16220.50† | 89.929 | 359.912 | 7491.28 | 7639.31 | 7333.90 | 2178.71 | 40°01'24.391"N | 104°40'08.511"W | 0.00 | |
| 16320.50† | 89.929 | 359.912 | 7491.41 | 7736.54 | 7433.90 | 2178.56 | 40°01'25.379"N | 104°40'08.513"W | 0.00 | |
| 16420.50† | 89.929 | 359.912 | 7491.53 | 7833.78 | 7533.90 | 2178.40 | 40°01'26.367"N | 104°40'08.514"W | 0.00 | |
| 16520.50† | 89.929 | 359.912 | 7491.66 | 7931.01 | 7633.90 | 2178.25 | 40°01'27.356"N | 104°40'08.516"W | 0.00 | |
| 16620.50† | 89.929 | 359.912 | 7491.78 | 8028.24 | 7733.90 | 2178.10 | 40°01'28.344"N | 104°40'08.518"W | 0.00 | |
| 16720.50† | 89.929 | 359.912 | 7491.90 | 8125.47 | 7833.89 | 2177.94 | 40°01'29.332"N | 104°40'08.520"W | 0.00 | |
| 16820.50† | 89.929 | 359.912 | 7492.03 | 8222.71 | 7933.89 | 2177.79 | 40°01'30.320"N | 104°40'08.522"W | 0.00 | |
| 16920.50† | 89.929 | 359.912 | 7492.15 | 8319.94 | 8033.89 | 2177.63 | 40°01'31.308"N | 104°40'08.524"W | 0.00 | |
| 17020.50† | 89.929 | 359.912 | 7492.28 | 8417.17 | 8133.89 | 2177.48 | 40°01'32.297"N | 104°40'08.526"W | 0.00 | |
| 17120.50† | 89.929 | 359.912 | 7492.40 | 8514.40 | 8233.89 | 2177.33 | 40°01'33.285"N | 104°40'08.528"W | 0.00 | |
| 17220.50† | 89.929 | 359.912 | 7492.53 | 8611.64 | 8333.89 | 2177.17 | 40°01'34.273"N | 104°40'08.529"W | 0.00 | |
| 17320.50† | 89.929 | 359.912 | 7492.65 | 8708.87 | 8433.89 | 2177.02 | 40°01'35.261"N | 104°40'08.531"W | 0.00 | |
| 17420.50† | 89.929 | 359.912 | 7492.77 | 8806.10 | 8533.89 | 2176.87 | 40°01'36.250"N | 104°40'08.533"W | 0.00 | |

Planned Wellpath Report

BUFORD 33-6-4L (REV-A.0) PWP

Page 8 of 10

REFERENCE WELLPATH IDENTIFICATION

| | | | |
|----------|---------------------------------|----------|--|
| Operator | CONFLUENCE RESOURCES | Slot | SLOT#12 BUFORD 33-6-4L (1010'FSL & 450'FWL,SEC.33) |
| Area | COLORADO | Well | BUFORD 33-6-4L |
| Field | WELD COUNTY (NAD83, TRUE NORTH) | Wellbore | BUFORD 33-6-4L PWB |
| Facility | SEC.33-T01N-R65W | | |

WELLPATH DATA (186 stations) † = interpolated/extrapolated station

| MD [ft] | Inclination [°] | Azimuth [°] | TVD [ft] | Vert Sect [ft] | North [ft] | East [ft] | Latitude | Longitude | DLS [°/100ft] | Comments |
|------------|--------------------|----------------|----------------------|-------------------|---------------|--------------|----------------|-----------------|------------------|----------------|
| 17520.50† | 89.929 | 359.912 | 7492.90 | 8903.34 | 8633.89 | 2176.71 | 40°01'37.238"N | 104°40'08.535"W | 0.00 | |
| 17620.50† | 89.929 | 359.912 | 7493.02 | 9000.57 | 8733.89 | 2176.56 | 40°01'38.226"N | 104°40'08.537"W | 0.00 | |
| 17720.50† | 89.929 | 359.912 | 7493.15 | 9097.80 | 8833.89 | 2176.40 | 40°01'39.214"N | 104°40'08.539"W | 0.00 | |
| 17820.50† | 89.929 | 359.912 | 7493.27 | 9195.03 | 8933.89 | 2176.25 | 40°01'40.203"N | 104°40'08.541"W | 0.00 | |
| 17920.50† | 89.929 | 359.912 | 7493.40 | 9292.27 | 9033.89 | 2176.10 | 40°01'41.191"N | 104°40'08.542"W | 0.00 | |
| 18004.82 | 89.929 | 359.912 | 7493.50 ² | 9374.25 | 9118.21 | 2175.97 | 40°01'42.024"N | 104°40'08.544"W | 0.00 | End of Tangent |

HOLE & CASING SECTIONS - Ref Wellbore: BUFORD 33-6-4L PWB Ref Wellpath: BUFORD 33-6-4L (REV-A.0) PWP

| String/Diameter | Start MD [ft] | End MD [ft] | Interval [ft] | Start TVD [ft] | End TVD [ft] | Start N/S [ft] | Start E/W [ft] | End N/S [ft] | End E/W [ft] |
|------------------------|------------------|----------------|------------------|-------------------|-----------------|-------------------|-------------------|-----------------|-----------------|
| 13.5in Open Hole | 20.50 | 1500.00 | 1479.50 | 20.50 | 1500.00 | 0.00 | 0.00 | 0.00 | 0.00 |
| 9.625in Casing Surface | 20.50 | 1500.00 | 1479.50 | 20.50 | 1500.00 | 0.00 | 0.00 | 0.00 | 0.00 |
| 8.5in Open Hole | 1500.00 | 18004.82 | 16504.82 | 1500.00 | N/A | 0.00 | 0.00 | N/A | N/A |

Planned Wellpath Report

BUFORD 33-6-4L (REV-A.0) PWP

Page 9 of 10



REFERENCE WELLPATH IDENTIFICATION

| | | | |
|----------|---------------------------------|----------|--|
| Operator | CONFLUENCE RESOURCES | Slot | SLOT#12 BUFORD 33-6-4L (1010'FSL & 450'FWL,SEC.33) |
| Area | COLORADO | Well | BUFORD 33-6-4L |
| Field | WELD COUNTY (NAD83, TRUE NORTH) | Wellbore | BUFORD 33-6-4L PWB |
| Facility | SEC.33-T01N-R65W | | |

TARGETS

| Name | MD [ft] | TVD [ft] | North [ft] | East [ft] | Grid East [US ft] | Grid North [US ft] | Latitude | Longitude | Shape |
|---|------------|-------------|---------------|--------------|----------------------|-----------------------|----------------|-----------------|---------|
| SEC.28-T01N-R65W | | 1.50 | -25.50 | -148.48 | 3230456.90 | 1245096.09 | 40°00'11.664"N | 104°40'38.424"W | polygon |
| SEC.33-T01N-R65W | | 1.50 | -25.50 | -148.48 | 3230456.90 | 1245096.09 | 40°00'11.664"N | 104°40'38.424"W | polygon |
| 1) BUFORD 33-6-4L LP REV-1 (470'FSL & 2637'FWL,SEC.33) | 8347.54 | 7481.50 | -539.05 | 2190.82 | 3232800.78 | 1244604.30 | 40°00'06.588"N | 104°40'08.364"W | point |
| 2) BUFORD 33-6-4L BHL REV-1 (470'FNL & 2637'FWL,SEC.28) | 18004.82 | 7493.50 | 9118.21 | 2175.97 | 3232696.28 | 1254260.66 | 40°01'42.024"N | 104°40'08.544"W | point |

SURVEY PROGRAM - Ref Wellbore: BUFORD 33-6-4L PWB Ref Wellpath: BUFORD 33-6-4L (REV-A.0) PWP

| Start MD [ft] | End MD [ft] | Positional Uncertainty Model | Log Name/Comment | Wellbore |
|------------------|----------------|------------------------------------|------------------|--------------------|
| 20.50 | 1500.00 | BHI NaviTrak (Rotating+Axial Corr) | | BUFORD 33-6-4L PWB |
| 1500.00 | 18004.82 | BHI AutoTrak Curve (Short) | | BUFORD 33-6-4L PWB |

Planned Wellpath Report

BUFORD 33-6-4L (REV-A.0) PWP

Page 10 of 10

REFERENCE WELLPATH IDENTIFICATION

| | | | |
|----------|---------------------------------|----------|--|
| Operator | CONFLUENCE RESOURCES | Slot | SLOT#12 BUFORD 33-6-4L (1010'FSL & 450'FWL,SEC.33) |
| Area | COLORADO | Well | BUFORD 33-6-4L |
| Field | WELD COUNTY (NAD83, TRUE NORTH) | Wellbore | BUFORD 33-6-4L PWB |
| Facility | SEC.33-T01N-R65W | | |

DESIGN COMMENTS

| MD [ft] | Inclination [°] | Azimuth [°] | TVD [ft] | Comment |
|------------|--------------------|----------------|-------------|----------------|
| 20.50 | 0.000 | 119.735 | 20.50 | Tie On |
| 1600.00 | 0.000 | 119.735 | 1600.00 | End of Tangent |
| 2889.34 | 25.787 | 119.735 | 2846.25 | End of Build |
| 7323.25 | 25.787 | 119.735 | 6838.63 | End of Tangent |
| 8347.54 | 89.929 | 359.912 | 7481.50 | End of 3D Arc |
| 18004.82 | 89.929 | 359.912 | 7493.50 | End of Tangent |