

# CONFLUENCE RESOURCES

Location: COLORADO Slot: SLOT#11 BUFORD 33-6-2L (985'FSL & 450'FWL,SEC.33)  
Field: WELD COUNTY (NAD83, TRUE NORTH) Well: BUFORD 33-6-2L  
Facility: SEC.33-T01N-R65W Wellbore: BUFORD 33-6-2L PWB

Plot reference wellpath is BUFORD 33-6-2L (REV-A.0) PWP	Grid System: NAD83 / Lambert Colorado SP, Northern Zone (501), US feet
True vertical depths are referenced to RIG (20.5) (RKB)	North Reference: True north
Measured depths are referenced to RIG (20.5) (RKB)	Scale: True distance
RIG (20.5) (RKB) to Mean Sea Level: 5101.5 feet	Depths are in feet
Mean Sea Level to Mud line (At Slot: SLOT#11 BUFORD 33-6-2L (985'FSL & 450'FWL,SEC.33)): 0 feet	Created by: robale01 on 2019-10-09
Coordinates are in feet referenced to Slot	Database: WADENVER

## Location Information

Facility Name				Grid East (US ft)	Grid North (US ft)	Latitude	Longitude
SEC.33-T01N-R65W				3230456.897	1245096.090	40°00'11.664"N	104°40'38.424"W
Slot	Local N (ft)	Local E (ft)		Grid East (US ft)	Grid North (US ft)	Latitude	Longitude
SLOT#11 BUFORD 33-6-2L (985'FSL & 450'FWL,SEC.33)	0.00	148.48		3230605.365	1245097.468	40°00'11.664"N	104°40'38.516"W
RIG (20.5) (RKB) to Mud line (At Slot: SLOT#11 BUFORD 33-6-2L (985'FSL & 450'FWL,SEC.33))						5101.5ft	
Mean Sea Level to Mud line (At Slot: SLOT#11 BUFORD 33-6-2L (985'FSL & 450'FWL,SEC.33))						0ft	
RIG (20.5) (RKB) to Mean Sea Level						5101.5ft	

## Targets

Name	MD (ft)	TVD (ft)	Local N (ft)	Local E (ft)	Grid East (US ft)	Grid North (US ft)	Latitude	Longitude
SEC.28-T01N-R65W		1.50	0.00	-148.48	3230456.90	1245096.09	40°00'11.664"N	104°40'38.424"W
SEC.33-T01N-R65W		1.50	0.00	-148.48	3230456.90	1245096.09	40°00'11.664"N	104°40'38.424"W
BUFORD 33-6-2L LP REV-1 (470'FSL & 2352'FWL,SEC.33)	8053.90	7272.50	-513.57	1905.06	3232515.04	1244601.62	40°00'06.588"N	104°40'12.036"W
BUFORD 33-6-2L BHL REV-1 (470'FSL & 2352'FWL,SEC.28)	17711.17	7282.50	9143.69	1890.32	3232410.66	1254257.98	40°01'42.024"N	104°40'12.216"W

## Survey Program

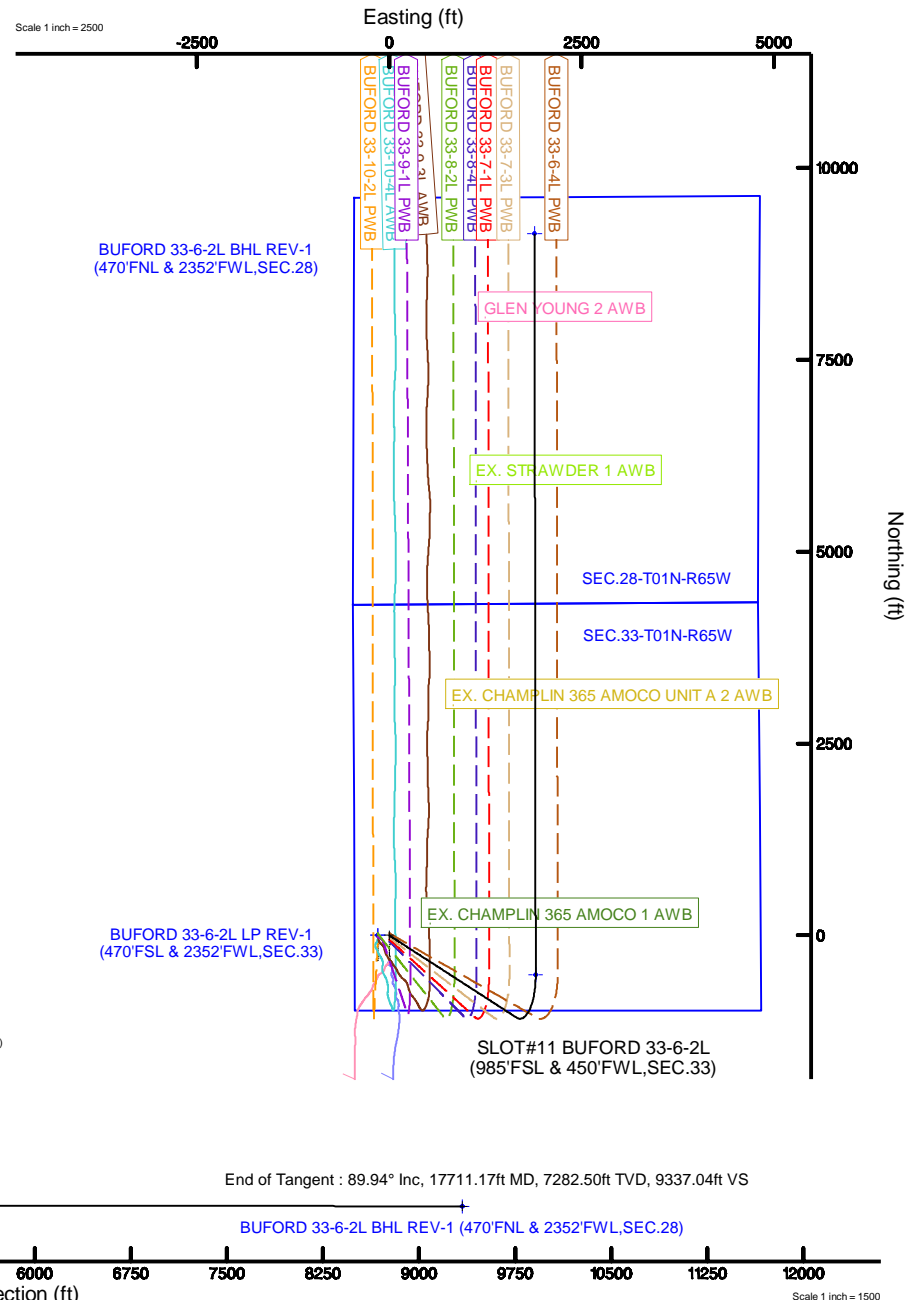
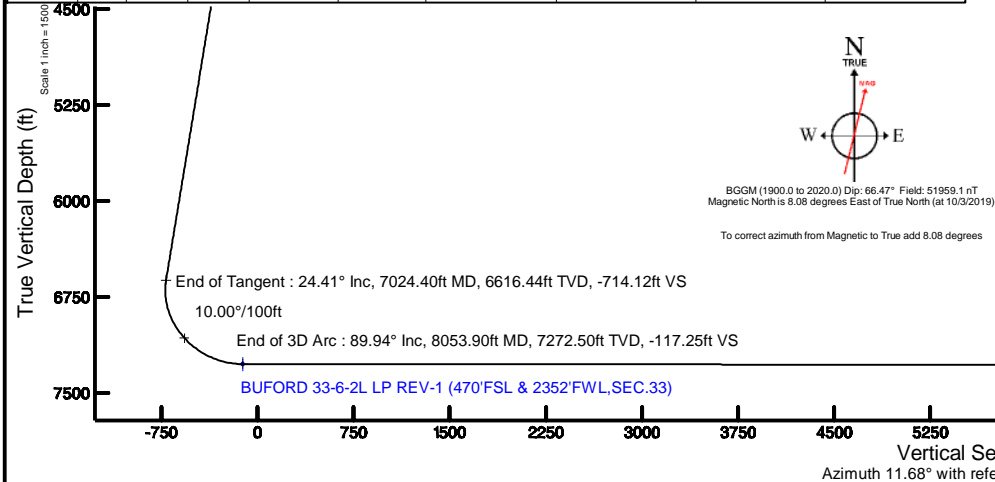
Start MD (ft)	End MD (ft)	Tool	Model	Log Name/Comment	Wellbore
20.50	1500.00	BHI NavTrak	BHI NavTrak (Rotating+Axial Corr)		BUFORD 33-6-2L PWB
1500.00	17711.17	BHI AutoTrak Curve	BHI AutoTrak Curve (Short)		BUFORD 33-6-2L PWB

## Well Profile Data

Design Comment	MD (ft)	Inc (°)	Az (°)	TVD (ft)	Local N (ft)	Local E (ft)	DLS (°/100ft)	VS (ft)
Tie On	20.50	0.000	122.902	20.50	0.00	0.00	0.00	0.00
End of Tangent	1650.00	0.000	122.902	1650.00	0.00	0.00	0.00	0.00
End of Build	2870.61	24.412	122.902	2834.01	-139.13	215.04	2.00	-92.71
End of Tangent	7024.40	24.412	122.902	6616.44	-1071.66	1656.44	0.00	-714.12
End of 3D Arc	8053.90	89.941	359.913	7272.50	-513.57	1905.06	10.00	-117.25
End of Tangent	17711.17	89.941	359.913	7282.50	9143.69	1890.32	0.00	9337.04

## Bottom Hole Location

MD (ft)	Inc (°)	Az (°)	TVD (ft)	Local N (ft)	Local E (ft)	Grid East (US ft)	Grid North (US ft)	Latitude	Longitude
17711.17	89.941	359.913	7282.50	9143.69	1890.32	3232410.66	1254257.98	40°01'42.024"N	104°40'12.216"W



# Planned Wellpath Report

BUFORD 33-6-2L (REV-A.0) PWP

Page 1 of 10



## REFERENCE WELLPATH IDENTIFICATION

Operator	CONFLUENCE RESOURCES	Slot	SLOT#11 BUFORD 33-6-2L (985'FSL & 450'FWL,SEC.33)
Area	COLORADO	Well	BUFORD 33-6-2L
Field	WELD COUNTY (NAD83, TRUE NORTH)	Wellbore	BUFORD 33-6-2L PWB
Facility	SEC.33-T01N-R65W		

## REPORT SETUP INFORMATION

Projection System	NAD83 / Lambert Colorado SP, Northern Zone (501), US feet	Software System	WellArchitect® 5.1
North Reference	True	User	Robiale01
Scale	0.999966	Report Generated	10/9/2019 at 4:31:34 PM
Convergence at slot	0.53° East	Database/Source file	WA DENVER/BUFORD_33-6-2L_REV-A.0_PWP.xml

## WELLPATH LOCATION

	Local coordinates		Grid coordinates		Geographic coordinates	
	North[ft]	East[ft]	Easting[US ft]	Northing[US ft]	Latitude	Longitude
Slot Location	0.00	148.48	3230605.37	1245097.47	40°00'11.664"N	104°40'36.516"W
Facility Reference Pt			3230456.90	1245096.09	40°00'11.664"N	104°40'38.424"W
Field Reference Pt			3230456.90	1245096.09	40°00'11.664"N	104°40'38.424"W

## WELLPATH DATUM

Calculation method	Minimum curvature	RIG (20.5') (RKB) to Facility Vertical Datum	5101.50ft
Horizontal Reference Pt	Slot	RIG (20.5') (RKB) to Mean Sea Level	5101.50ft
Vertical Reference Pt	RIG (20.5') (RKB)	RIG (20.5') (RKB) to Mud Line at Slot (SLOT#11 BUFORD 33-6-2L (985'FSL & 450'FWL,SEC.33))	5101.50ft
MD Reference Pt	RIG (20.5') (RKB)	Section Origin	N 0.00, E 0.00 ft
Field Vertical Reference	Mean Sea Level	Section Azimuth	11.68°

# Planned Wellpath Report

BUFORD 33-6-2L (REV-A.0) PWP

Page 2 of 10



## REFERENCE WELLPATH IDENTIFICATION

Operator	CONFLUENCE RESOURCES	Slot	SLOT#11 BUFORD 33-6-2L (985'FSL & 450'FWL,SEC.33)
Area	COLORADO	Well	BUFORD 33-6-2L
Field	WELD COUNTY (NAD83, TRUE NORTH)	Wellbore	BUFORD 33-6-2L PWB
Facility	SEC.33-T01N-R65W		

## WELLPATH DATA (183 stations) † = interpolated/extrapolated station

MD [ft]	Inclination [°]	Azimuth [°]	TVD [ft]	Vert Sect [ft]	North [ft]	East [ft]	Latitude	Longitude	DLS [°/100ft]	Comments
0.00†	0.000	122.902	0.00	0.00	0.00	0.00	40°00'11.664"N	104°40'36.516"W	0.00	
20.50	0.000	122.902	20.50	0.00	0.00	0.00	40°00'11.664"N	104°40'36.516"W	0.00	Tie On
120.50†	0.000	122.902	120.50	0.00	0.00	0.00	40°00'11.664"N	104°40'36.516"W	0.00	
220.50†	0.000	122.902	220.50	0.00	0.00	0.00	40°00'11.664"N	104°40'36.516"W	0.00	
320.50†	0.000	122.902	320.50	0.00	0.00	0.00	40°00'11.664"N	104°40'36.516"W	0.00	
420.50†	0.000	122.902	420.50	0.00	0.00	0.00	40°00'11.664"N	104°40'36.516"W	0.00	
520.50†	0.000	122.902	520.50	0.00	0.00	0.00	40°00'11.664"N	104°40'36.516"W	0.00	
620.50†	0.000	122.902	620.50	0.00	0.00	0.00	40°00'11.664"N	104°40'36.516"W	0.00	
720.50†	0.000	122.902	720.50	0.00	0.00	0.00	40°00'11.664"N	104°40'36.516"W	0.00	
820.50†	0.000	122.902	820.50	0.00	0.00	0.00	40°00'11.664"N	104°40'36.516"W	0.00	
920.50†	0.000	122.902	920.50	0.00	0.00	0.00	40°00'11.664"N	104°40'36.516"W	0.00	
1020.50†	0.000	122.902	1020.50	0.00	0.00	0.00	40°00'11.664"N	104°40'36.516"W	0.00	
1120.50†	0.000	122.902	1120.50	0.00	0.00	0.00	40°00'11.664"N	104°40'36.516"W	0.00	
1220.50†	0.000	122.902	1220.50	0.00	0.00	0.00	40°00'11.664"N	104°40'36.516"W	0.00	
1320.50†	0.000	122.902	1320.50	0.00	0.00	0.00	40°00'11.664"N	104°40'36.516"W	0.00	
1420.50†	0.000	122.902	1420.50	0.00	0.00	0.00	40°00'11.664"N	104°40'36.516"W	0.00	
1520.50†	0.000	122.902	1520.50	0.00	0.00	0.00	40°00'11.664"N	104°40'36.516"W	0.00	
1620.50†	0.000	122.902	1620.50	0.00	0.00	0.00	40°00'11.664"N	104°40'36.516"W	0.00	
1650.00	0.000	122.902	1650.00	0.00	0.00	0.00	40°00'11.664"N	104°40'36.516"W	0.00	End of Tangent
1720.50†	1.410	122.902	1720.49	-0.31	-0.47	0.73	40°00'11.659"N	104°40'36.507"W	2.00	
1820.50†	3.410	122.902	1820.40	-1.84	-2.76	4.26	40°00'11.637"N	104°40'36.461"W	2.00	
1920.50†	5.410	122.902	1920.10	-4.62	-6.93	10.71	40°00'11.595"N	104°40'36.378"W	2.00	
2020.50†	7.410	122.902	2019.47	-8.66	-13.00	20.09	40°00'11.536"N	104°40'36.258"W	2.00	
2120.50†	9.410	122.902	2118.39	-13.95	-20.94	32.37	40°00'11.457"N	104°40'36.100"W	2.00	
2220.50†	11.410	122.902	2216.74	-20.49	-30.75	47.54	40°00'11.360"N	104°40'35.905"W	2.00	
2320.50†	13.410	122.902	2314.40	-28.27	-42.43	65.58	40°00'11.245"N	104°40'35.673"W	2.00	
2420.50†	15.410	122.902	2411.24	-37.28	-55.94	86.47	40°00'11.111"N	104°40'35.405"W	2.00	
2520.50†	17.410	122.902	2507.17	-47.51	-71.29	110.19	40°00'10.959"N	104°40'35.100"W	2.00	
2620.50†	19.410	122.902	2602.04	-58.94	-88.44	136.71	40°00'10.790"N	104°40'34.759"W	2.00	
2720.50†	21.410	122.902	2695.76	-71.56	-107.39	165.98	40°00'10.603"N	104°40'34.383"W	2.00	

# Planned Wellpath Report

BUFORD 33-6-2L (REV-A.0) PWP

Page 3 of 10

## REFERENCE WELLPATH IDENTIFICATION

Operator	CONFLUENCE RESOURCES	Slot	SLOT#11 BUFORD 33-6-2L (985'FSL & 450'FWL,SEC.33)
Area	COLORADO	Well	BUFORD 33-6-2L
Field	WELD COUNTY (NAD83, TRUE NORTH)	Wellbore	BUFORD 33-6-2L PWB
Facility	SEC.33-T01N-R65W		

## WELLPATH DATA (183 stations) † = interpolated/extrapolated station

MD [ft]	Inclination [°]	Azimuth [°]	TVD [ft]	Vert Sect [ft]	North [ft]	East [ft]	Latitude	Longitude	DLS [°/100ft]	Comments
2820.50†	23.410	122.902	2788.20	-85.36	-128.09	197.99	40°00'10.398"N	104°40'33.972"W	2.00	
2870.61	24.412	122.902	2834.01	-92.71	-139.13	215.04	40°00'10.289"N	104°40'33.753"W	2.00	End of Build
2920.50†	24.412	122.902	2879.44	-100.17	-150.33	232.36	40°00'10.178"N	104°40'33.530"W	0.00	
3020.50†	24.412	122.902	2970.50	-115.13	-172.78	267.06	40°00'09.957"N	104°40'33.084"W	0.00	
3120.50†	24.412	122.902	3061.56	-130.09	-195.23	301.76	40°00'09.735"N	104°40'32.638"W	0.00	
3220.50†	24.412	122.902	3152.62	-145.05	-217.68	336.46	40°00'09.513"N	104°40'32.192"W	0.00	
3320.50†	24.412	122.902	3243.68	-160.01	-240.13	371.16	40°00'09.291"N	104°40'31.747"W	0.00	
3420.50†	24.412	122.902	3334.74	-174.97	-262.58	405.86	40°00'09.069"N	104°40'31.301"W	0.00	
3520.50†	24.412	122.902	3425.80	-189.93	-285.03	440.56	40°00'08.847"N	104°40'30.855"W	0.00	
3620.50†	24.412	122.902	3516.86	-204.89	-307.48	475.26	40°00'08.625"N	104°40'30.409"W	0.00	
3720.50†	24.412	122.902	3607.92	-219.85	-329.93	509.96	40°00'08.403"N	104°40'29.963"W	0.00	
3820.50†	24.412	122.902	3698.98	-234.81	-352.38	544.66	40°00'08.182"N	104°40'29.517"W	0.00	
3920.50†	24.412	122.902	3790.04	-249.77	-374.83	579.36	40°00'07.960"N	104°40'29.071"W	0.00	
4020.50†	24.412	122.902	3881.10	-264.73	-397.28	614.06	40°00'07.738"N	104°40'28.625"W	0.00	
4120.50†	24.412	122.902	3972.16	-279.69	-419.73	648.76	40°00'07.516"N	104°40'28.179"W	0.00	
4220.50†	24.412	122.902	4063.22	-294.65	-442.18	683.46	40°00'07.294"N	104°40'27.733"W	0.00	
4320.50†	24.412	122.902	4154.28	-309.61	-464.63	718.16	40°00'07.072"N	104°40'27.288"W	0.00	
4420.50†	24.412	122.902	4245.34	-324.57	-487.08	752.87	40°00'06.850"N	104°40'26.842"W	0.00	
4520.50†	24.412	122.902	4336.40	-339.53	-509.53	787.57	40°00'06.629"N	104°40'26.396"W	0.00	
4620.50†	24.412	122.902	4427.46	-354.49	-531.98	822.27	40°00'06.407"N	104°40'25.950"W	0.00	
4720.50†	24.412	122.902	4518.52	-369.45	-554.43	856.97	40°00'06.185"N	104°40'25.504"W	0.00	
4820.50†	24.412	122.902	4609.58	-384.41	-576.88	891.67	40°00'05.963"N	104°40'25.058"W	0.00	
4920.50†	24.412	122.902	4700.63	-399.37	-599.33	926.37	40°00'05.741"N	104°40'24.612"W	0.00	
5020.50†	24.412	122.902	4791.69	-414.33	-621.78	961.07	40°00'05.519"N	104°40'24.166"W	0.00	
5120.50†	24.412	122.902	4882.75	-429.29	-644.23	995.77	40°00'05.297"N	104°40'23.720"W	0.00	
5220.50†	24.412	122.902	4973.81	-444.25	-666.68	1030.47	40°00'05.075"N	104°40'23.275"W	0.00	
5320.50†	24.412	122.902	5064.87	-459.21	-689.13	1065.17	40°00'04.854"N	104°40'22.829"W	0.00	
5420.50†	24.412	122.902	5155.93	-474.17	-711.58	1099.87	40°00'04.632"N	104°40'22.383"W	0.00	
5520.50†	24.412	122.902	5246.99	-489.13	-734.03	1134.57	40°00'04.410"N	104°40'21.937"W	0.00	
5620.50†	24.412	122.902	5338.05	-504.09	-756.48	1169.27	40°00'04.188"N	104°40'21.491"W	0.00	

# Planned Wellpath Report

BUFORD 33-6-2L (REV-A.0) PWP

Page 4 of 10



## REFERENCE WELLPATH IDENTIFICATION

Operator	CONFLUENCE RESOURCES	Slot	SLOT#11 BUFORD 33-6-2L (985'FSL & 450'FWL,SEC.33)
Area	COLORADO	Well	BUFORD 33-6-2L
Field	WELD COUNTY (NAD83, TRUE NORTH)	Wellbore	BUFORD 33-6-2L PWB
Facility	SEC.33-T01N-R65W		

## WELLPATH DATA (183 stations) † = interpolated/extrapolated station

MD [ft]	Inclination [°]	Azimuth [°]	TVD [ft]	Vert Sect [ft]	North [ft]	East [ft]	Latitude	Longitude	DLS [°/100ft]	Comments
5720.50†	24.412	122.902	5429.11	-519.05	-778.93	1203.97	40°00'03.966"N	104°40'21.045"W	0.00	
5820.50†	24.412	122.902	5520.17	-534.01	-801.38	1238.67	40°00'03.744"N	104°40'20.599"W	0.00	
5920.50†	24.412	122.902	5611.23	-548.97	-823.83	1273.37	40°00'03.522"N	104°40'20.153"W	0.00	
6020.50†	24.412	122.902	5702.29	-563.93	-846.28	1308.08	40°00'03.300"N	104°40'19.707"W	0.00	
6120.50†	24.412	122.902	5793.35	-578.89	-868.73	1342.78	40°00'03.079"N	104°40'19.262"W	0.00	
6220.50†	24.412	122.902	5884.41	-593.85	-891.18	1377.48	40°00'02.857"N	104°40'18.816"W	0.00	
6320.50†	24.412	122.902	5975.47	-608.81	-913.63	1412.18	40°00'02.635"N	104°40'18.370"W	0.00	
6420.50†	24.412	122.902	6066.53	-623.77	-936.08	1446.88	40°00'02.413"N	104°40'17.924"W	0.00	
6520.50†	24.412	122.902	6157.59	-638.73	-958.53	1481.58	40°00'02.191"N	104°40'17.478"W	0.00	
6620.50†	24.412	122.902	6248.65	-653.69	-980.98	1516.28	40°00'01.969"N	104°40'17.032"W	0.00	
6720.50†	24.412	122.902	6339.71	-668.65	-1003.43	1550.98	40°00'01.747"N	104°40'16.586"W	0.00	
6820.50†	24.412	122.902	6430.77	-683.61	-1025.88	1585.68	40°00'01.525"N	104°40'16.140"W	0.00	
6920.50†	24.412	122.902	6521.83	-698.57	-1048.33	1620.38	40°00'01.304"N	104°40'15.695"W	0.00	
7020.50†	24.412	122.902	6612.89	-713.53	-1070.78	1655.08	40°00'01.082"N	104°40'15.249"W	0.00	
7024.40	24.412	122.902	6616.44	-714.12	-1071.66	1656.44	40°00'01.073"N	104°40'15.231"W	0.00	End of Tangent
7120.50†	21.101	99.381	6705.23	-720.62	-1085.30	1690.25	40°00'00.938"N	104°40'14.797"W	10.00	
7220.50†	21.812	71.880	6798.53	-710.64	-1082.45	1725.76	40°00'00.966"N	104°40'14.341"W	10.00	
7320.50†	26.407	49.930	6889.97	-683.88	-1062.30	1760.52	40°00'01.165"N	104°40'13.894"W	10.00	
7420.50†	33.312	35.281	6976.76	-641.15	-1025.48	1793.48	40°00'01.529"N	104°40'13.470"W	10.00	
7520.50†	41.380	25.485	7056.26	-583.74	-973.09	1823.64	40°00'02.047"N	104°40'13.083"W	10.00	
7620.50†	50.045	18.484	7126.07	-513.41	-906.74	1850.08	40°00'02.703"N	104°40'12.743"W	10.00	
7720.50†	59.035	13.091	7184.05	-432.28	-828.43	1872.00	40°00'03.476"N	104°40'12.461"W	10.00	
7820.50†	68.209	8.642	7228.45	-342.83	-740.55	1888.73	40°00'04.345"N	104°40'12.246"W	10.00	
7920.50†	77.488	4.735	7257.92	-247.77	-645.76	1899.76	40°00'05.282"N	104°40'12.104"W	10.00	
8020.50†	86.820	1.102	7271.56	-150.00	-546.95	1904.77	40°00'06.258"N	104°40'12.040"W	10.00	
8053.90	89.941	359.913	7272.50 <sup>†</sup>	-117.25	-513.57	1905.06	40°00'06.588"N	104°40'12.036"W	10.00	End of 3D Arc
8120.50†	89.941	359.913	7272.57	-52.05	-446.97	1904.96	40°00'07.246"N	104°40'12.037"W	0.00	
8220.50†	89.941	359.913	7272.67	45.85	-346.97	1904.81	40°00'08.234"N	104°40'12.039"W	0.00	
8320.50†	89.941	359.913	7272.78	143.75	-246.97	1904.65	40°00'09.223"N	104°40'12.041"W	0.00	
8420.50†	89.941	359.913	7272.88	241.65	-146.97	1904.50	40°00'10.211"N	104°40'12.043"W	0.00	

# Planned Wellpath Report

BUFORD 33-6-2L (REV-A.0) PWP

Page 5 of 10

## REFERENCE WELLPATH IDENTIFICATION

Operator	CONFLUENCE RESOURCES	Slot	SLOT#11 BUFORD 33-6-2L (985'FSL & 450'FWL,SEC.33)
Area	COLORADO	Well	BUFORD 33-6-2L
Field	WELD COUNTY (NAD83, TRUE NORTH)	Wellbore	BUFORD 33-6-2L PWB
Facility	SEC.33-T01N-R65W		

## WELLPATH DATA (183 stations) † = interpolated/extrapolated station

MD [ft]	Inclination [°]	Azimuth [°]	TVD [ft]	Vert Sect [ft]	North [ft]	East [ft]	Latitude	Longitude	DLS [°/100ft]	Comments
8520.50†	89.941	359.913	7272.98	339.55	-46.97	1904.35	40°00'11.199"N	104°40'12.045"W	0.00	
8620.50†	89.941	359.913	7273.09	437.44	53.03	1904.20	40°00'12.187"N	104°40'12.047"W	0.00	
8720.50†	89.941	359.913	7273.19	535.34	153.03	1904.04	40°00'13.176"N	104°40'12.048"W	0.00	
8820.50†	89.941	359.913	7273.29	633.24	253.03	1903.89	40°00'14.164"N	104°40'12.050"W	0.00	
8920.50†	89.941	359.913	7273.40	731.14	353.03	1903.74	40°00'15.152"N	104°40'12.052"W	0.00	
9020.50†	89.941	359.913	7273.50	829.04	453.03	1903.59	40°00'16.140"N	104°40'12.054"W	0.00	
9120.50†	89.941	359.913	7273.60	926.93	553.03	1903.43	40°00'17.128"N	104°40'12.056"W	0.00	
9220.50†	89.941	359.913	7273.71	1024.83	653.03	1903.28	40°00'18.117"N	104°40'12.058"W	0.00	
9320.50†	89.941	359.913	7273.81	1122.73	753.03	1903.13	40°00'19.105"N	104°40'12.060"W	0.00	
9420.50†	89.941	359.913	7273.92	1220.63	853.03	1902.98	40°00'20.093"N	104°40'12.061"W	0.00	
9520.50†	89.941	359.913	7274.02	1318.53	953.03	1902.82	40°00'21.081"N	104°40'12.063"W	0.00	
9620.50†	89.941	359.913	7274.12	1416.43	1053.03	1902.67	40°00'22.070"N	104°40'12.065"W	0.00	
9720.50†	89.941	359.913	7274.23	1514.32	1153.03	1902.52	40°00'23.058"N	104°40'12.067"W	0.00	
9820.50†	89.941	359.913	7274.33	1612.22	1253.03	1902.36	40°00'24.046"N	104°40'12.069"W	0.00	
9920.50†	89.941	359.913	7274.43	1710.12	1353.03	1902.21	40°00'25.034"N	104°40'12.071"W	0.00	
10020.50†	89.941	359.913	7274.54	1808.02	1453.03	1902.06	40°00'26.023"N	104°40'12.073"W	0.00	
10120.50†	89.941	359.913	7274.64	1905.92	1553.03	1901.91	40°00'27.011"N	104°40'12.075"W	0.00	
10220.50†	89.941	359.913	7274.74	2003.81	1653.03	1901.75	40°00'27.999"N	104°40'12.076"W	0.00	
10320.50†	89.941	359.913	7274.85	2101.71	1753.03	1901.60	40°00'28.987"N	104°40'12.078"W	0.00	
10420.50†	89.941	359.913	7274.95	2199.61	1853.03	1901.45	40°00'29.975"N	104°40'12.080"W	0.00	
10520.50†	89.941	359.913	7275.05	2297.51	1953.03	1901.30	40°00'30.964"N	104°40'12.082"W	0.00	
10620.50†	89.941	359.913	7275.16	2395.41	2053.03	1901.14	40°00'31.952"N	104°40'12.084"W	0.00	
10720.50†	89.941	359.913	7275.26	2493.30	2153.03	1900.99	40°00'32.940"N	104°40'12.086"W	0.00	
10820.50†	89.941	359.913	7275.36	2591.20	2253.03	1900.84	40°00'33.928"N	104°40'12.088"W	0.00	
10920.50†	89.941	359.913	7275.47	2689.10	2353.03	1900.69	40°00'34.917"N	104°40'12.089"W	0.00	
11020.50†	89.941	359.913	7275.57	2787.00	2453.03	1900.53	40°00'35.905"N	104°40'12.091"W	0.00	
11120.50†	89.941	359.913	7275.68	2884.90	2553.03	1900.38	40°00'36.893"N	104°40'12.093"W	0.00	
11220.50†	89.941	359.913	7275.78	2982.80	2653.03	1900.23	40°00'37.881"N	104°40'12.095"W	0.00	
11320.50†	89.941	359.913	7275.88	3080.69	2753.03	1900.07	40°00'38.870"N	104°40'12.097"W	0.00	
11420.50†	89.941	359.913	7275.99	3178.59	2853.03	1899.92	40°00'39.858"N	104°40'12.099"W	0.00	



# Planned Wellpath Report

BUFORD 33-6-2L (REV-A.0) PWP

Page 6 of 10



## REFERENCE WELLPATH IDENTIFICATION

Operator	CONFLUENCE RESOURCES	Slot	SLOT#11 BUFORD 33-6-2L (985'FSL & 450'FWL,SEC.33)
Area	COLORADO	Well	BUFORD 33-6-2L
Field	WELD COUNTY (NAD83, TRUE NORTH)	Wellbore	BUFORD 33-6-2L PWB
Facility	SEC.33-T01N-R65W		

## WELLPATH DATA (183 stations) † = interpolated/extrapolated station

MD [ft]	Inclination [°]	Azimuth [°]	TVD [ft]	Vert Sect [ft]	North [ft]	East [ft]	Latitude	Longitude	DLS [°/100ft]	Comments
11520.50†	89.941	359.913	7276.09	3276.49	2953.03	1899.77	40°00'40.846"N	104°40'12.101"W	0.00	
11620.50†	89.941	359.913	7276.19	3374.39	3053.03	1899.62	40°00'41.834"N	104°40'12.102"W	0.00	
11720.50†	89.941	359.913	7276.30	3472.29	3153.03	1899.46	40°00'42.822"N	104°40'12.104"W	0.00	
11820.50†	89.941	359.913	7276.40	3570.18	3253.03	1899.31	40°00'43.811"N	104°40'12.106"W	0.00	
11920.50†	89.941	359.913	7276.50	3668.08	3353.03	1899.16	40°00'44.799"N	104°40'12.108"W	0.00	
12020.50†	89.941	359.913	7276.61	3765.98	3453.02	1899.01	40°00'45.787"N	104°40'12.110"W	0.00	
12120.50†	89.941	359.913	7276.71	3863.88	3553.02	1898.85	40°00'46.775"N	104°40'12.112"W	0.00	
12220.50†	89.941	359.913	7276.81	3961.78	3653.02	1898.70	40°00'47.764"N	104°40'12.114"W	0.00	
12320.50†	89.941	359.913	7276.92	4059.67	3753.02	1898.55	40°00'48.752"N	104°40'12.116"W	0.00	
12420.50†	89.941	359.913	7277.02	4157.57	3853.02	1898.40	40°00'49.740"N	104°40'12.117"W	0.00	
12520.50†	89.941	359.913	7277.13	4255.47	3953.02	1898.24	40°00'50.728"N	104°40'12.119"W	0.00	
12620.50†	89.941	359.913	7277.23	4353.37	4053.02	1898.09	40°00'51.717"N	104°40'12.121"W	0.00	
12720.50†	89.941	359.913	7277.33	4451.27	4153.02	1897.94	40°00'52.705"N	104°40'12.123"W	0.00	
12820.50†	89.941	359.913	7277.44	4549.16	4253.02	1897.78	40°00'53.693"N	104°40'12.125"W	0.00	
12920.50†	89.941	359.913	7277.54	4647.06	4353.02	1897.63	40°00'54.681"N	104°40'12.127"W	0.00	
13020.50†	89.941	359.913	7277.64	4744.96	4453.02	1897.48	40°00'55.669"N	104°40'12.129"W	0.00	
13120.50†	89.941	359.913	7277.75	4842.86	4553.02	1897.33	40°00'56.658"N	104°40'12.130"W	0.00	
13220.50†	89.941	359.913	7277.85	4940.76	4653.02	1897.17	40°00'57.646"N	104°40'12.132"W	0.00	
13320.50†	89.941	359.913	7277.95	5038.66	4753.02	1897.02	40°00'58.634"N	104°40'12.134"W	0.00	
13420.50†	89.941	359.913	7278.06	5136.55	4853.02	1896.87	40°00'59.622"N	104°40'12.136"W	0.00	
13520.50†	89.941	359.913	7278.16	5234.45	4953.02	1896.72	40°01'00.611"N	104°40'12.138"W	0.00	
13620.50†	89.941	359.913	7278.26	5332.35	5053.02	1896.56	40°01'01.599"N	104°40'12.140"W	0.00	
13720.50†	89.941	359.913	7278.37	5430.25	5153.02	1896.41	40°01'02.587"N	104°40'12.142"W	0.00	
13820.50†	89.941	359.913	7278.47	5528.15	5253.02	1896.26	40°01'03.575"N	104°40'12.143"W	0.00	
13920.50†	89.941	359.913	7278.57	5626.04	5353.02	1896.11	40°01'04.564"N	104°40'12.145"W	0.00	
14020.50†	89.941	359.913	7278.68	5723.94	5453.02	1895.95	40°01'05.552"N	104°40'12.147"W	0.00	
14120.50†	89.941	359.913	7278.78	5821.84	5553.02	1895.80	40°01'06.540"N	104°40'12.149"W	0.00	
14220.50†	89.941	359.913	7278.89	5919.74	5653.02	1895.65	40°01'07.528"N	104°40'12.151"W	0.00	
14320.50†	89.941	359.913	7278.99	6017.64	5753.02	1895.49	40°01'08.516"N	104°40'12.153"W	0.00	
14420.50†	89.941	359.913	7279.09	6115.53	5853.02	1895.34	40°01'09.505"N	104°40'12.155"W	0.00	

# Planned Wellpath Report

BUFORD 33-6-2L (REV-A.0) PWP

Page 7 of 10

## REFERENCE WELLPATH IDENTIFICATION

Operator	CONFLUENCE RESOURCES	Slot	SLOT#11 BUFORD 33-6-2L (985'FSL & 450'FWL,SEC.33)
Area	COLORADO	Well	BUFORD 33-6-2L
Field	WELD COUNTY (NAD83, TRUE NORTH)	Wellbore	BUFORD 33-6-2L PWB
Facility	SEC.33-T01N-R65W		

## WELLPATH DATA (183 stations) † = interpolated/extrapolated station

MD [ft]	Inclination [°]	Azimuth [°]	TVD [ft]	Vert Sect [ft]	North [ft]	East [ft]	Latitude	Longitude	DLS [°/100ft]	Comments
14520.50†	89.941	359.913	7279.20	6213.43	5953.02	1895.19	40°01'10.493"N	104°40'12.157"W	0.00	
14620.50†	89.941	359.913	7279.30	6311.33	6053.02	1895.04	40°01'11.481"N	104°40'12.158"W	0.00	
14720.50†	89.941	359.913	7279.40	6409.23	6153.02	1894.88	40°01'12.469"N	104°40'12.160"W	0.00	
14820.50†	89.941	359.913	7279.51	6507.13	6253.02	1894.73	40°01'13.458"N	104°40'12.162"W	0.00	
14920.50†	89.941	359.913	7279.61	6605.03	6353.02	1894.58	40°01'14.446"N	104°40'12.164"W	0.00	
15020.50†	89.941	359.913	7279.71	6702.92	6453.02	1894.43	40°01'15.434"N	104°40'12.166"W	0.00	
15120.50†	89.941	359.913	7279.82	6800.82	6553.02	1894.27	40°01'16.422"N	104°40'12.168"W	0.00	
15220.50†	89.941	359.913	7279.92	6898.72	6653.02	1894.12	40°01'17.410"N	104°40'12.170"W	0.00	
15320.50†	89.941	359.913	7280.02	6996.62	6753.02	1893.97	40°01'18.399"N	104°40'12.171"W	0.00	
15420.50†	89.941	359.913	7280.13	7094.52	6853.02	1893.82	40°01'19.387"N	104°40'12.173"W	0.00	
15520.50†	89.941	359.913	7280.23	7192.41	6953.02	1893.66	40°01'20.375"N	104°40'12.175"W	0.00	
15620.50†	89.941	359.913	7280.34	7290.31	7053.02	1893.51	40°01'21.363"N	104°40'12.177"W	0.00	
15720.50†	89.941	359.913	7280.44	7388.21	7153.02	1893.36	40°01'22.352"N	104°40'12.179"W	0.00	
15820.50†	89.941	359.913	7280.54	7486.11	7253.02	1893.21	40°01'23.340"N	104°40'12.181"W	0.00	
15920.50†	89.941	359.913	7280.65	7584.01	7353.02	1893.05	40°01'24.328"N	104°40'12.183"W	0.00	
16020.50†	89.941	359.913	7280.75	7681.90	7453.02	1892.90	40°01'25.316"N	104°40'12.184"W	0.00	
16120.50†	89.941	359.913	7280.85	7779.80	7553.02	1892.75	40°01'26.305"N	104°40'12.186"W	0.00	
16220.50†	89.941	359.913	7280.96	7877.70	7653.02	1892.59	40°01'27.293"N	104°40'12.188"W	0.00	
16320.50†	89.941	359.913	7281.06	7975.60	7753.02	1892.44	40°01'28.281"N	104°40'12.190"W	0.00	
16420.50†	89.941	359.913	7281.16	8073.50	7853.02	1892.29	40°01'29.269"N	104°40'12.192"W	0.00	
16520.50†	89.941	359.913	7281.27	8171.39	7953.02	1892.14	40°01'30.257"N	104°40'12.194"W	0.00	
16620.50†	89.941	359.913	7281.37	8269.29	8053.02	1891.98	40°01'31.246"N	104°40'12.196"W	0.00	
16720.50†	89.941	359.913	7281.47	8367.19	8153.02	1891.83	40°01'32.234"N	104°40'12.198"W	0.00	
16820.50†	89.941	359.913	7281.58	8465.09	8253.02	1891.68	40°01'33.222"N	104°40'12.199"W	0.00	
16920.50†	89.941	359.913	7281.68	8562.99	8353.02	1891.53	40°01'34.210"N	104°40'12.201"W	0.00	
17020.50†	89.941	359.913	7281.78	8660.89	8453.02	1891.37	40°01'35.199"N	104°40'12.203"W	0.00	
17120.50†	89.941	359.913	7281.89	8758.78	8553.02	1891.22	40°01'36.187"N	104°40'12.205"W	0.00	
17220.50†	89.941	359.913	7281.99	8856.68	8653.02	1891.07	40°01'37.175"N	104°40'12.207"W	0.00	
17320.50†	89.941	359.913	7282.10	8954.58	8753.02	1890.92	40°01'38.163"N	104°40'12.209"W	0.00	
17420.50†	89.941	359.913	7282.20	9052.48	8853.02	1890.76	40°01'39.151"N	104°40'12.211"W	0.00	



# Planned Wellpath Report

BUFORD 33-6-2L (REV-A.0) PWP

Page 8 of 10



## REFERENCE WELLPATH IDENTIFICATION

Operator	CONFLUENCE RESOURCES	Slot	SLOT#11 BUFORD 33-6-2L (985'FSL & 450'FWL,SEC.33)
Area	COLORADO	Well	BUFORD 33-6-2L
Field	WELD COUNTY (NAD83, TRUE NORTH)	Wellbore	BUFORD 33-6-2L PWB
Facility	SEC.33-T01N-R65W		

## WELLPATH DATA (183 stations) † = interpolated/extrapolated station

MD [ft]	Inclination [°]	Azimuth [°]	TVD [ft]	Vert Sect [ft]	North [ft]	East [ft]	Latitude	Longitude	DLS [°/100ft]	Comments
17520.50†	89.941	359.913	7282.30	9150.38	8953.02	1890.61	40°01'40.140"N	104°40'12.212"W	0.00	
17620.50†	89.941	359.913	7282.41	9248.27	9053.02	1890.46	40°01'41.128"N	104°40'12.214"W	0.00	
17711.17	89.941	359.913	7282.50 <sup>2</sup>	9337.04	9143.69	1890.32	40°01'42.024"N	104°40'12.216"W	0.00	End of Tangent

## HOLE & CASING SECTIONS - Ref Wellbore: BUFORD 33-6-2L PWB Ref Wellpath: BUFORD 33-6-2L (REV-A.0) PWP

String/Diameter	Start MD [ft]	End MD [ft]	Interval [ft]	Start TVD [ft]	End TVD [ft]	Start N/S [ft]	Start E/W [ft]	End N/S [ft]	End E/W [ft]
13.5in Open Hole	20.50	1500.00	1479.50	20.50	1500.00	0.00	0.00	0.00	0.00
9.625in Casing Surface	20.50	1500.00	1479.50	20.50	1500.00	0.00	0.00	0.00	0.00
8.5in Open Hole	1500.00	17711.17	16211.17	1500.00	7282.50	0.00	0.00	9143.69	1890.32

## TARGETS

Name	MD [ft]	TVD [ft]	North [ft]	East [ft]	Grid East [US ft]	Grid North [US ft]	Latitude	Longitude	Shape
SEC.28-T01N-R65W		1.50	0.00	-148.48	3230456.90	1245096.09	40°00'11.664"N	104°40'38.424"W	polygon
SEC.33-T01N-R65W		1.50	0.00	-148.48	3230456.90	1245096.09	40°00'11.664"N	104°40'38.424"W	polygon
1) BUFORD 33-6-2L LP REV-1 (470'FSL & 2352'FWL,SEC.33)	8053.90	7272.50	-513.57	1905.06	3232515.04	1244601.62	40°00'06.588"N	104°40'12.036"W	point
2) BUFORD 33-6-2L BHL REV-1 (470'FNL & 2352'FWL,SEC.28)	17711.17	7282.50	9143.69	1890.32	3232410.66	1254257.98	40°01'42.024"N	104°40'12.216"W	point

# Planned Wellpath Report

BUFORD 33-6-2L (REV-A.0) PWP

Page 9 of 10



REFERENCE WELLPATH IDENTIFICATION			
Operator	CONFLUENCE RESOURCES	Slot	SLOT#11 BUFORD 33-6-2L (985'FSL & 450'FWL,SEC.33)
Area	COLORADO	Well	BUFORD 33-6-2L
Field	WELD COUNTY (NAD83, TRUE NORTH)	Wellbore	BUFORD 33-6-2L PWB
Facility	SEC.33-T01N-R65W		

SURVEY PROGRAM - Ref Wellbore: BUFORD 33-6-2L PWB    Ref Wellpath: BUFORD 33-6-2L (REV-A.0) PWP				
Start MD [ft]	End MD [ft]	Positional Uncertainty Model	Log Name/Comment	Wellbore
20.50	1500.00	BHI NaviTrak (Rotating+Axial Corr)		BUFORD 33-6-2L PWB
1500.00	17711.17	BHI AutoTrak Curve (Short)		BUFORD 33-6-2L PWB

# Planned Wellpath Report

BUFORD 33-6-2L (REV-A.0) PWP

Page 10 of 10

## REFERENCE WELLPATH IDENTIFICATION

Operator	CONFLUENCE RESOURCES	Slot	SLOT#11 BUFORD 33-6-2L (985'FSL & 450'FWL,SEC.33)
Area	COLORADO	Well	BUFORD 33-6-2L
Field	WELD COUNTY (NAD83, TRUE NORTH)	Wellbore	BUFORD 33-6-2L PWB
Facility	SEC.33-T01N-R65W		

## DESIGN COMMENTS

MD [ft]	Inclination [°]	Azimuth [°]	TVD [ft]	Comment
20.50	0.000	122.902	20.50	Tie On
1650.00	0.000	122.902	1650.00	End of Tangent
2870.61	24.412	122.902	2834.01	End of Build
7024.40	24.412	122.902	6616.44	End of Tangent
8053.90	89.941	359.913	7272.50	End of 3D Arc
17711.17	89.941	359.913	7282.50	End of Tangent