

CONFLUENCE RESOURCES

Location: COLORADO Slot: SLOT#10 BUFORD 33-7-3L (960'FSL & 450'FWL,SEC.33)
Field: WELD COUNTY (NAD83, TRUE NORTH) Well: BUFORD 33-7-3L
Facility: SEC.33-T01N-R65W Wellbore: BUFORD 33-7-3L PWB

Plot reference wellpath is BUFORD 33-7-3L (REV-A.0) PWP	Grid System: NAD83 / Lambert Colorado SP, Northern Zone (501), US feet
True vertical depths are referenced to RIG (20.5) (RKB)	North Reference: True north
Measured depths are referenced to RIG (20.5) (RKB)	Scale: True distance
RIG (20.5) (RKB) to Mean Sea Level: 5101.5 feet	Depths are in feet
Mean Sea Level to Mud line (At Slot: SLOT#10 BUFORD 33-7-3L (960'FSL & 450'FWL,SEC.33)): 0 feet	Created by: robale01 on 2019-10-09
Coordinates are in feet referenced to Slot	Database: WADENVER

Location Information

Facility Name		Grid East (US ft)	Grid North (US ft)	Latitude	Longitude
SEC.33-T01N-R65W		3230456.897	1245096.090	40°00'11.664"N	104°40'38.424"W
Slot	Local N (ft)	Local E (ft)	Grid East (US ft)	Grid North (US ft)	Latitude
SLOT#10 BUFORD 33-7-3L (960'FSL & 450'FWL,SEC.33)	-25.50	148.48	3230605.602	1245071.969	40°00'11.412"N
RIG (20.5) (RKB) to Mud line (At Slot: SLOT#10 BUFORD 33-7-3L (960'FSL & 450'FWL,SEC.33))					5101.5ft
Mean Sea Level to Mud line (At Slot: SLOT#10 BUFORD 33-7-3L (960'FSL & 450'FWL,SEC.33))					0ft
RIG (20.5) (RKB) to Mean Sea Level					5101.5ft

Targets

Name	MD (ft)	TVD (ft)	Local N (ft)	Local E (ft)	Grid East (US ft)	Grid North (US ft)	Latitude	Longitude
SEC.28-T01N-R65W		1.50	25.50	-148.48	3230456.90	1245096.09	40°00'11.664"N	104°40'38.424"W
SEC.33-T01N-R65W		1.50	25.50	-148.48	3230456.90	1245096.09	40°00'11.664"N	104°40'38.424"W
BUFORD 33-7-3L LP REV-1 (470'FSL & 2010'FWL,SEC.33)	8009.71	7343.50	-488.10	1563.27	3232173.28	1244598.42	40°00'06.588"N	104°40'16.428"W
BUFORD 33-7-3L BHL REV-1 (470'FNL & 2010'FWL,SEC.28)	17663.34	7349.50	9165.52	1548.66	3232069.06	1254251.14	40°01'41.988"N	104°40'16.608"W

Survey Program

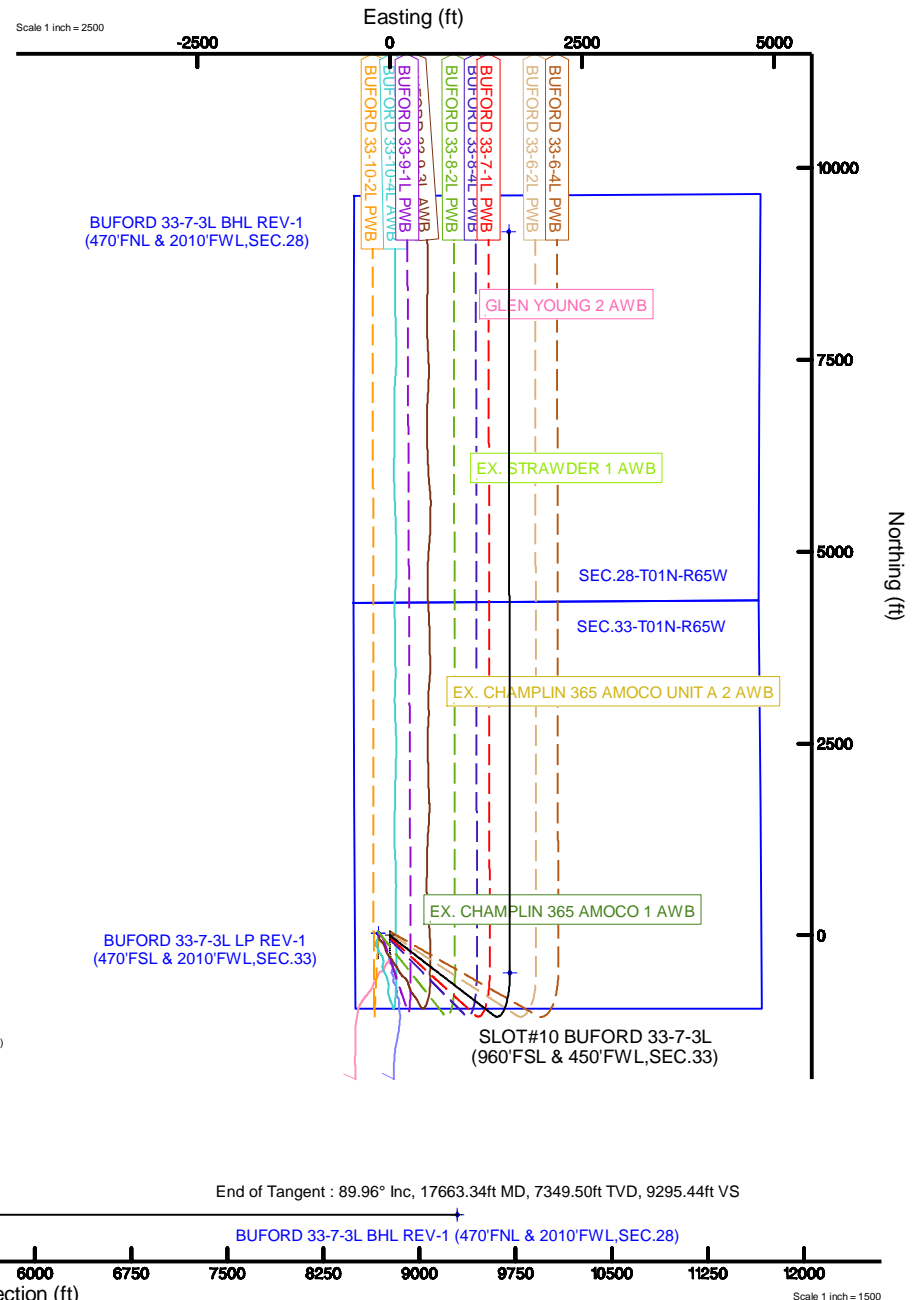
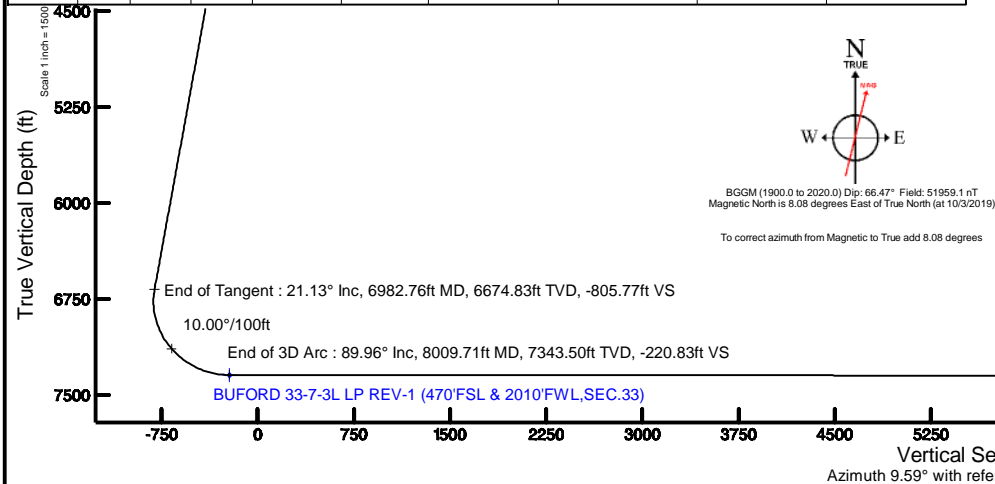
Start MD (ft)	End MD (ft)	Tool	Model	Log Name/Comment	Wellbore
20.50	1500.00	BHI NavTrak	BHI NavTrak (Rotating+Axial Corr)		BUFORD 33-7-3L PWB
1500.00	17663.34	BHI AutoTrak Curve	BHI AutoTrak Curve (Short)		BUFORD 33-7-3L PWB

Well Profile Data

Design Comment	MD (ft)	Inc (°)	Az (°)	TVD (ft)	Local N (ft)	Local E (ft)	DLS (°/100ft)	VS (ft)
Tie On	20.50	0.000	127.595	20.50	0.00	0.00	0.00	0.00
End of Tangent	1700.00	0.000	127.595	1700.00	0.00	0.00	0.00	0.00
End of Build	2756.48	21.130	127.595	2732.70	-117.50	152.61	2.00	-90.44
End of Tangent	6982.76	21.130	127.595	6674.83	-1046.94	1359.74	0.00	-805.77
End of 3D Arc	8009.71	89.964	359.913	7343.50	-488.10	1563.27	10.00	-220.83
End of Tangent	17663.34	89.964	359.913	7349.50	9165.52	1548.66	0.00	9295.44

Bottom Hole Location

MD (ft)	Inc (°)	Az (°)	TVD (ft)	Local N (ft)	Local E (ft)	Grid East (US ft)	Grid North (US ft)	Latitude	Longitude
17663.34	89.964	359.913	7349.50	9165.52	1548.66	3232069.06	1254251.14	40°01'41.988"N	104°40'16.608"W



Planned Wellpath Report

BUFORD 33-7-3L (REV-A.0) PWP

Page 1 of 10



REFERENCE WELLPATH IDENTIFICATION

Operator	CONFLUENCE RESOURCES	Slot	SLOT#10 BUFORD 33-7-3L (960'FSL & 450'FWL,SEC.33)
Area	COLORADO	Well	BUFORD 33-7-3L
Field	WELD COUNTY (NAD83, TRUE NORTH)	Wellbore	BUFORD 33-7-3L PWB
Facility	SEC.33-T01N-R65W		

REPORT SETUP INFORMATION

Projection System	NAD83 / Lambert Colorado SP, Northern Zone (501), US feet	Software System	WellArchitect® 5.1
North Reference	True	User	Robiale01
Scale	0.999966	Report Generated	10/9/2019 at 4:23:26 PM
Convergence at slot	0.53° East	Database/Source file	WA DENVER/BUFORD_33-7-3L_REV-A.0_PWP.xml

WELLPATH LOCATION

	Local coordinates		Grid coordinates		Geographic coordinates	
	North[ft]	East[ft]	Easting[US ft]	Northing[US ft]	Latitude	Longitude
Slot Location	-25.50	148.48	3230605.60	1245071.97	40°00'11.412"N	104°40'36.516"W
Facility Reference Pt			3230456.90	1245096.09	40°00'11.664"N	104°40'38.424"W
Field Reference Pt			3230456.90	1245096.09	40°00'11.664"N	104°40'38.424"W

WELLPATH DATUM

Calculation method	Minimum curvature	RIG (20.5') (RKB) to Facility Vertical Datum	5101.50ft
Horizontal Reference Pt	Slot	RIG (20.5') (RKB) to Mean Sea Level	5101.50ft
Vertical Reference Pt	RIG (20.5') (RKB)	RIG (20.5') (RKB) to Mud Line at Slot (SLOT#10 BUFORD 33-7-3L (960'FSL & 450'FWL,SEC.33))	5101.50ft
MD Reference Pt	RIG (20.5') (RKB)	Section Origin	N 0.00, E 0.00 ft
Field Vertical Reference	Mean Sea Level	Section Azimuth	9.59°

Planned Wellpath Report

BUFORD 33-7-3L (REV-A.0) PWP

Page 2 of 10

REFERENCE WELLPATH IDENTIFICATION

Operator	CONFLUENCE RESOURCES	Slot	SLOT#10 BUFORD 33-7-3L (960'FSL & 450'FWL,SEC.33)
Area	COLORADO	Well	BUFORD 33-7-3L
Field	WELD COUNTY (NAD83, TRUE NORTH)	Wellbore	BUFORD 33-7-3L PWB
Facility	SEC.33-T01N-R65W		

WELLPATH DATA (183 stations) † = interpolated/extrapolated station

MD [ft]	Inclination [°]	Azimuth [°]	TVD [ft]	Vert Sect [ft]	North [ft]	East [ft]	Latitude	Longitude	DLS [°/100ft]	Comments
0.00†	0.000	127.595	0.00	0.00	0.00	0.00	40°00'11.412"N	104°40'36.516"W	0.00	
20.50	0.000	127.595	20.50	0.00	0.00	0.00	40°00'11.412"N	104°40'36.516"W	0.00	Tie On
120.50†	0.000	127.595	120.50	0.00	0.00	0.00	40°00'11.412"N	104°40'36.516"W	0.00	
220.50†	0.000	127.595	220.50	0.00	0.00	0.00	40°00'11.412"N	104°40'36.516"W	0.00	
320.50†	0.000	127.595	320.50	0.00	0.00	0.00	40°00'11.412"N	104°40'36.516"W	0.00	
420.50†	0.000	127.595	420.50	0.00	0.00	0.00	40°00'11.412"N	104°40'36.516"W	0.00	
520.50†	0.000	127.595	520.50	0.00	0.00	0.00	40°00'11.412"N	104°40'36.516"W	0.00	
620.50†	0.000	127.595	620.50	0.00	0.00	0.00	40°00'11.412"N	104°40'36.516"W	0.00	
720.50†	0.000	127.595	720.50	0.00	0.00	0.00	40°00'11.412"N	104°40'36.516"W	0.00	
820.50†	0.000	127.595	820.50	0.00	0.00	0.00	40°00'11.412"N	104°40'36.516"W	0.00	
920.50†	0.000	127.595	920.50	0.00	0.00	0.00	40°00'11.412"N	104°40'36.516"W	0.00	
1020.50†	0.000	127.595	1020.50	0.00	0.00	0.00	40°00'11.412"N	104°40'36.516"W	0.00	
1120.50†	0.000	127.595	1120.50	0.00	0.00	0.00	40°00'11.412"N	104°40'36.516"W	0.00	
1220.50†	0.000	127.595	1220.50	0.00	0.00	0.00	40°00'11.412"N	104°40'36.516"W	0.00	
1320.50†	0.000	127.595	1320.50	0.00	0.00	0.00	40°00'11.412"N	104°40'36.516"W	0.00	
1420.50†	0.000	127.595	1420.50	0.00	0.00	0.00	40°00'11.412"N	104°40'36.516"W	0.00	
1520.50†	0.000	127.595	1520.50	0.00	0.00	0.00	40°00'11.412"N	104°40'36.516"W	0.00	
1620.50†	0.000	127.595	1620.50	0.00	0.00	0.00	40°00'11.412"N	104°40'36.516"W	0.00	
1700.00	0.000	127.595	1700.00	0.00	0.00	0.00	40°00'11.412"N	104°40'36.516"W	0.00	End of Tangent
1720.50†	0.410	127.595	1720.50	-0.03	-0.04	0.06	40°00'11.412"N	104°40'36.515"W	2.00	
1820.50†	2.410	127.595	1820.46	-1.19	-1.55	2.01	40°00'11.397"N	104°40'36.490"W	2.00	
1920.50†	4.410	127.595	1920.28	-3.98	-5.17	6.72	40°00'11.361"N	104°40'36.430"W	2.00	
2020.50†	6.410	127.595	2019.83	-8.41	-10.93	14.19	40°00'11.304"N	104°40'36.334"W	2.00	
2120.50†	8.410	127.595	2118.99	-14.46	-18.79	24.41	40°00'11.226"N	104°40'36.202"W	2.00	
2220.50†	10.410	127.595	2217.64	-22.14	-28.77	37.36	40°00'11.128"N	104°40'36.036"W	2.00	
2320.50†	12.410	127.595	2315.66	-31.43	-40.84	53.04	40°00'11.008"N	104°40'35.834"W	2.00	
2420.50†	14.410	127.595	2412.93	-42.32	-54.98	71.41	40°00'10.869"N	104°40'35.598"W	2.00	
2520.50†	16.410	127.595	2509.33	-54.79	-71.19	92.47	40°00'10.708"N	104°40'35.328"W	2.00	
2620.50†	18.410	127.595	2604.74	-68.84	-89.45	116.17	40°00'10.528"N	104°40'35.023"W	2.00	
2720.50†	20.410	127.595	2699.05	-84.45	-109.72	142.50	40°00'10.328"N	104°40'34.685"W	2.00	

Planned Wellpath Report

BUFORD 33-7-3L (REV-A.0) PWP

Page 3 of 10

REFERENCE WELLPATH IDENTIFICATION

Operator	CONFLUENCE RESOURCES	Slot	SLOT#10 BUFORD 33-7-3L (960'FSL & 450'FWL,SEC.33)
Area	COLORADO	Well	BUFORD 33-7-3L
Field	WELD COUNTY (NAD83, TRUE NORTH)	Wellbore	BUFORD 33-7-3L PWB
Facility	SEC.33-T01N-R65W		

WELLPATH DATA (183 stations) † = interpolated/extrapolated station

MD [ft]	Inclination [°]	Azimuth [°]	TVD [ft]	Vert Sect [ft]	North [ft]	East [ft]	Latitude	Longitude	DLS [°/100ft]	Comments
2756.48	21.130	127.595	2732.70	-90.44	-117.50	152.61	40°00'10.251"N	104°40'34.555"W	2.00	End of Build
2820.50†	21.130	127.595	2792.41	-101.27	-131.58	170.90	40°00'10.112"N	104°40'34.320"W	0.00	
2920.50†	21.130	127.595	2885.69	-118.20	-153.58	199.46	40°00'09.894"N	104°40'33.953"W	0.00	
3020.50†	21.130	127.595	2978.96	-135.12	-175.57	228.02	40°00'09.677"N	104°40'33.586"W	0.00	
3120.50†	21.130	127.595	3072.24	-152.05	-197.56	256.58	40°00'09.460"N	104°40'33.219"W	0.00	
3220.50†	21.130	127.595	3165.52	-168.98	-219.55	285.15	40°00'09.242"N	104°40'32.852"W	0.00	
3320.50†	21.130	127.595	3258.80	-185.90	-241.54	313.71	40°00'09.025"N	104°40'32.485"W	0.00	
3420.50†	21.130	127.595	3352.07	-202.83	-263.53	342.27	40°00'08.808"N	104°40'32.118"W	0.00	
3520.50†	21.130	127.595	3445.35	-219.75	-285.53	370.83	40°00'08.590"N	104°40'31.751"W	0.00	
3620.50†	21.130	127.595	3538.63	-236.68	-307.52	399.40	40°00'08.373"N	104°40'31.384"W	0.00	
3720.50†	21.130	127.595	3631.90	-253.60	-329.51	427.96	40°00'08.156"N	104°40'31.017"W	0.00	
3820.50†	21.130	127.595	3725.18	-270.53	-351.50	456.52	40°00'07.938"N	104°40'30.650"W	0.00	
3920.50†	21.130	127.595	3818.46	-287.46	-373.49	485.08	40°00'07.721"N	104°40'30.283"W	0.00	
4020.50†	21.130	127.595	3911.73	-304.38	-395.49	513.65	40°00'07.504"N	104°40'29.916"W	0.00	
4120.50†	21.130	127.595	4005.01	-321.31	-417.48	542.21	40°00'07.286"N	104°40'29.549"W	0.00	
4220.50†	21.130	127.595	4098.29	-338.23	-439.47	570.77	40°00'07.069"N	104°40'29.182"W	0.00	
4320.50†	21.130	127.595	4191.56	-355.16	-461.46	599.33	40°00'06.852"N	104°40'28.815"W	0.00	
4420.50†	21.130	127.595	4284.84	-372.09	-483.45	627.90	40°00'06.634"N	104°40'28.448"W	0.00	
4520.50†	21.130	127.595	4378.12	-389.01	-505.44	656.46	40°00'06.417"N	104°40'28.081"W	0.00	
4620.50†	21.130	127.595	4471.39	-405.94	-527.44	685.02	40°00'06.200"N	104°40'27.714"W	0.00	
4720.50†	21.130	127.595	4564.67	-422.86	-549.43	713.58	40°00'05.982"N	104°40'27.347"W	0.00	
4820.50†	21.130	127.595	4657.95	-439.79	-571.42	742.14	40°00'05.765"N	104°40'26.979"W	0.00	
4920.50†	21.130	127.595	4751.22	-456.71	-593.41	770.71	40°00'05.548"N	104°40'26.612"W	0.00	
5020.50†	21.130	127.595	4844.50	-473.64	-615.40	799.27	40°00'05.330"N	104°40'26.245"W	0.00	
5120.50†	21.130	127.595	4937.78	-490.57	-637.39	827.83	40°00'05.113"N	104°40'25.878"W	0.00	
5220.50†	21.130	127.595	5031.05	-507.49	-659.39	856.39	40°00'04.896"N	104°40'25.511"W	0.00	
5320.50†	21.130	127.595	5124.33	-524.42	-681.38	884.96	40°00'04.678"N	104°40'25.144"W	0.00	
5420.50†	21.130	127.595	5217.61	-541.34	-703.37	913.52	40°00'04.461"N	104°40'24.777"W	0.00	
5520.50†	21.130	127.595	5310.88	-558.27	-725.36	942.08	40°00'04.244"N	104°40'24.410"W	0.00	
5620.50†	21.130	127.595	5404.16	-575.20	-747.35	970.64	40°00'04.026"N	104°40'24.043"W	0.00	

Planned Wellpath Report

BUFORD 33-7-3L (REV-A.0) PWP

Page 4 of 10

REFERENCE WELLPATH IDENTIFICATION

Operator	CONFLUENCE RESOURCES	Slot	SLOT#10 BUFORD 33-7-3L (960'FSL & 450'FWL,SEC.33)
Area	COLORADO	Well	BUFORD 33-7-3L
Field	WELD COUNTY (NAD83, TRUE NORTH)	Wellbore	BUFORD 33-7-3L PWB
Facility	SEC.33-T01N-R65W		

WELLPATH DATA (183 stations) † = interpolated/extrapolated station

MD [ft]	Inclination [°]	Azimuth [°]	TVD [ft]	Vert Sect [ft]	North [ft]	East [ft]	Latitude	Longitude	DLS [°/100ft]	Comments
5720.50†	21.130	127.595	5497.44	-592.12	-769.35	999.21	40°00'03.809"N	104°40'23.676"W	0.00	
5820.50†	21.130	127.595	5590.71	-609.05	-791.34	1027.77	40°00'03.592"N	104°40'23.309"W	0.00	
5920.50†	21.130	127.595	5683.99	-625.97	-813.33	1056.33	40°00'03.374"N	104°40'22.942"W	0.00	
6020.50†	21.130	127.595	5777.27	-642.90	-835.32	1084.89	40°00'03.157"N	104°40'22.575"W	0.00	
6120.50†	21.130	127.595	5870.54	-659.82	-857.31	1113.46	40°00'02.940"N	104°40'22.208"W	0.00	
6220.50†	21.130	127.595	5963.82	-676.75	-879.30	1142.02	40°00'02.722"N	104°40'21.841"W	0.00	
6320.50†	21.130	127.595	6057.10	-693.68	-901.30	1170.58	40°00'02.505"N	104°40'21.474"W	0.00	
6420.50†	21.130	127.595	6150.37	-710.60	-923.29	1199.14	40°00'02.287"N	104°40'21.107"W	0.00	
6520.50†	21.130	127.595	6243.65	-727.53	-945.28	1227.71	40°00'02.070"N	104°40'20.740"W	0.00	
6620.50†	21.130	127.595	6336.93	-744.45	-967.27	1256.27	40°00'01.853"N	104°40'20.373"W	0.00	
6720.50†	21.130	127.595	6430.20	-761.38	-989.26	1284.83	40°00'01.635"N	104°40'20.006"W	0.00	
6820.50†	21.130	127.595	6523.48	-778.30	-1011.26	1313.39	40°00'01.418"N	104°40'19.639"W	0.00	
6920.50†	21.130	127.595	6616.76	-795.23	-1033.25	1341.96	40°00'01.201"N	104°40'19.272"W	0.00	
6982.76	21.130	127.595	6674.83	-805.77	-1046.94	1359.74	40°00'01.065"N	104°40'19.044"W	0.00	End of Tangent
7020.50†	19.158	118.229	6710.27	-810.94	-1054.02	1370.59	40°00'00.995"N	104°40'18.904"W	10.00	
7120.50†	17.035	86.345	6805.55	-812.84	-1060.87	1399.74	40°00'00.928"N	104°40'18.530"W	10.00	
7220.50†	20.185	56.189	6900.53	-797.59	-1050.30	1428.76	40°00'01.032"N	104°40'18.157"W	10.00	
7320.50†	26.809	37.144	6992.31	-765.66	-1022.66	1456.79	40°00'01.305"N	104°40'17.797"W	10.00	
7420.50†	34.981	25.818	7078.13	-718.02	-978.77	1482.95	40°00'01.739"N	104°40'17.460"W	10.00	
7520.50†	43.841	18.471	7155.35	-656.12	-919.96	1506.47	40°00'02.320"N	104°40'17.158"W	10.00	
7620.50†	53.039	13.206	7221.65	-581.84	-848.04	1526.62	40°00'03.031"N	104°40'16.899"W	10.00	
7720.50†	62.419	9.095	7275.00	-497.44	-765.17	1542.79	40°00'03.850"N	104°40'16.691"W	10.00	
7820.50†	71.900	5.639	7313.78	-405.48	-673.88	1554.50	40°00'04.752"N	104°40'16.541"W	10.00	
7920.50†	81.436	2.542	7336.82	-308.75	-576.95	1561.38	40°00'05.710"N	104°40'16.452"W	10.00	
8009.71	89.964	359.913	7343.50 [†]	-220.83	-488.10	1563.27	40°00'06.588"N	104°40'16.428"W	10.00	End of 3D Arc
8020.50†	89.964	359.913	7343.51	-210.19	-477.31	1563.25	40°00'06.695"N	104°40'16.428"W	0.00	
8120.50†	89.964	359.913	7343.57	-111.61	-377.31	1563.10	40°00'07.683"N	104°40'16.430"W	0.00	
8220.50†	89.964	359.913	7343.63	-13.04	-277.31	1562.95	40°00'08.671"N	104°40'16.432"W	0.00	
8320.50†	89.964	359.913	7343.69	85.54	-177.31	1562.80	40°00'09.659"N	104°40'16.434"W	0.00	
8420.50†	89.964	359.913	7343.76	184.12	-77.31	1562.65	40°00'10.648"N	104°40'16.436"W	0.00	

Planned Wellpath Report

BUFORD 33-7-3L (REV-A.0) PWP

Page 5 of 10

REFERENCE WELLPATH IDENTIFICATION

Operator	CONFLUENCE RESOURCES	Slot	SLOT#10 BUFORD 33-7-3L (960'FSL & 450'FWL,SEC.33)
Area	COLORADO	Well	BUFORD 33-7-3L
Field	WELD COUNTY (NAD83, TRUE NORTH)	Wellbore	BUFORD 33-7-3L PWB
Facility	SEC.33-T01N-R65W		

WELLPATH DATA (183 stations) † = interpolated/extrapolated station

MD [ft]	Inclination [°]	Azimuth [°]	TVD [ft]	Vert Sect [ft]	North [ft]	East [ft]	Latitude	Longitude	DLS [°/100ft]	Comments
8520.50†	89.964	359.913	7343.82	282.69	22.69	1562.50	40°00'11.636"N	104°40'16.438"W	0.00	
8620.50†	89.964	359.913	7343.88	381.27	122.69	1562.35	40°00'12.624"N	104°40'16.439"W	0.00	
8720.50†	89.964	359.913	7343.94	479.85	222.69	1562.20	40°00'13.612"N	104°40'16.441"W	0.00	
8820.50†	89.964	359.913	7344.00	578.43	322.69	1562.04	40°00'14.600"N	104°40'16.443"W	0.00	
8920.50†	89.964	359.913	7344.07	677.00	422.69	1561.89	40°00'15.589"N	104°40'16.445"W	0.00	
9020.50†	89.964	359.913	7344.13	775.58	522.69	1561.74	40°00'16.577"N	104°40'16.447"W	0.00	
9120.50†	89.964	359.913	7344.19	874.16	622.69	1561.59	40°00'17.565"N	104°40'16.449"W	0.00	
9220.50†	89.964	359.913	7344.25	972.73	722.69	1561.44	40°00'18.553"N	104°40'16.451"W	0.00	
9320.50†	89.964	359.913	7344.31	1071.31	822.69	1561.29	40°00'19.542"N	104°40'16.452"W	0.00	
9420.50†	89.964	359.913	7344.38	1169.89	922.69	1561.14	40°00'20.530"N	104°40'16.454"W	0.00	
9520.50†	89.964	359.913	7344.44	1268.46	1022.69	1560.98	40°00'21.518"N	104°40'16.456"W	0.00	
9620.50†	89.964	359.913	7344.50	1367.04	1122.69	1560.83	40°00'22.506"N	104°40'16.458"W	0.00	
9720.50†	89.964	359.913	7344.56	1465.62	1222.69	1560.68	40°00'23.495"N	104°40'16.460"W	0.00	
9820.50†	89.964	359.913	7344.63	1564.20	1322.69	1560.53	40°00'24.483"N	104°40'16.462"W	0.00	
9920.50†	89.964	359.913	7344.69	1662.77	1422.69	1560.38	40°00'25.471"N	104°40'16.464"W	0.00	
10020.50†	89.964	359.913	7344.75	1761.35	1522.69	1560.23	40°00'26.459"N	104°40'16.465"W	0.00	
10120.50†	89.964	359.913	7344.81	1859.93	1622.69	1560.08	40°00'27.447"N	104°40'16.467"W	0.00	
10220.50†	89.964	359.913	7344.87	1958.50	1722.69	1559.93	40°00'28.436"N	104°40'16.469"W	0.00	
10320.50†	89.964	359.913	7344.94	2057.08	1822.69	1559.77	40°00'29.424"N	104°40'16.471"W	0.00	
10420.50†	89.964	359.913	7345.00	2155.66	1922.69	1559.62	40°00'30.412"N	104°40'16.473"W	0.00	
10520.50†	89.964	359.913	7345.06	2254.24	2022.69	1559.47	40°00'31.400"N	104°40'16.475"W	0.00	
10620.50†	89.964	359.913	7345.12	2352.81	2122.69	1559.32	40°00'32.389"N	104°40'16.477"W	0.00	
10720.50†	89.964	359.913	7345.18	2451.39	2222.69	1559.17	40°00'33.377"N	104°40'16.479"W	0.00	
10820.50†	89.964	359.913	7345.25	2549.97	2322.69	1559.02	40°00'34.365"N	104°40'16.480"W	0.00	
10920.50†	89.964	359.913	7345.31	2648.54	2422.69	1558.87	40°00'35.353"N	104°40'16.482"W	0.00	
11020.50†	89.964	359.913	7345.37	2747.12	2522.69	1558.71	40°00'36.342"N	104°40'16.484"W	0.00	
11120.50†	89.964	359.913	7345.43	2845.70	2622.69	1558.56	40°00'37.330"N	104°40'16.486"W	0.00	
11220.50†	89.964	359.913	7345.50	2944.27	2722.69	1558.41	40°00'38.318"N	104°40'16.488"W	0.00	
11320.50†	89.964	359.913	7345.56	3042.85	2822.69	1558.26	40°00'39.306"N	104°40'16.490"W	0.00	
11420.50†	89.964	359.913	7345.62	3141.43	2922.69	1558.11	40°00'40.294"N	104°40'16.492"W	0.00	

Planned Wellpath Report

BUFORD 33-7-3L (REV-A.0) PWP

Page 6 of 10

REFERENCE WELLPATH IDENTIFICATION

Operator	CONFLUENCE RESOURCES	Slot	SLOT#10 BUFORD 33-7-3L (960'FSL & 450'FWL,SEC.33)
Area	COLORADO	Well	BUFORD 33-7-3L
Field	WELD COUNTY (NAD83, TRUE NORTH)	Wellbore	BUFORD 33-7-3L PWB
Facility	SEC.33-T01N-R65W		

WELLPATH DATA (183 stations) † = interpolated/extrapolated station

MD [ft]	Inclination [°]	Azimuth [°]	TVD [ft]	Vert Sect [ft]	North [ft]	East [ft]	Latitude	Longitude	DLS [°/100ft]	Comments
11520.50†	89.964	359.913	7345.68	3240.01	3022.69	1557.96	40°00'41.283"N	104°40'16.493"W	0.00	
11620.50†	89.964	359.913	7345.74	3338.58	3122.69	1557.81	40°00'42.271"N	104°40'16.495"W	0.00	
11720.50†	89.964	359.913	7345.81	3437.16	3222.69	1557.66	40°00'43.259"N	104°40'16.497"W	0.00	
11820.50†	89.964	359.913	7345.87	3535.74	3322.69	1557.50	40°00'44.247"N	104°40'16.499"W	0.00	
11920.50†	89.964	359.913	7345.93	3634.31	3422.69	1557.35	40°00'45.236"N	104°40'16.501"W	0.00	
12020.50†	89.964	359.913	7345.99	3732.89	3522.69	1557.20	40°00'46.224"N	104°40'16.503"W	0.00	
12120.50†	89.964	359.913	7346.05	3831.47	3622.69	1557.05	40°00'47.212"N	104°40'16.505"W	0.00	
12220.50†	89.964	359.913	7346.12	3930.04	3722.69	1556.90	40°00'48.200"N	104°40'16.506"W	0.00	
12320.50†	89.964	359.913	7346.18	4028.62	3822.69	1556.75	40°00'49.189"N	104°40'16.508"W	0.00	
12420.50†	89.964	359.913	7346.24	4127.20	3922.69	1556.60	40°00'50.177"N	104°40'16.510"W	0.00	
12520.50†	89.964	359.913	7346.30	4225.78	4022.69	1556.44	40°00'51.165"N	104°40'16.512"W	0.00	
12620.50†	89.964	359.913	7346.37	4324.35	4122.69	1556.29	40°00'52.153"N	104°40'16.514"W	0.00	
12720.50†	89.964	359.913	7346.43	4422.93	4222.69	1556.14	40°00'53.141"N	104°40'16.516"W	0.00	
12820.50†	89.964	359.913	7346.49	4521.51	4322.69	1555.99	40°00'54.130"N	104°40'16.518"W	0.00	
12920.50†	89.964	359.913	7346.55	4620.08	4422.69	1555.84	40°00'55.118"N	104°40'16.520"W	0.00	
13020.50†	89.964	359.913	7346.61	4718.66	4522.69	1555.69	40°00'56.106"N	104°40'16.521"W	0.00	
13120.50†	89.964	359.913	7346.68	4817.24	4622.69	1555.54	40°00'57.094"N	104°40'16.523"W	0.00	
13220.50†	89.964	359.913	7346.74	4915.82	4722.69	1555.39	40°00'58.083"N	104°40'16.525"W	0.00	
13320.50†	89.964	359.913	7346.80	5014.39	4822.69	1555.23	40°00'59.071"N	104°40'16.527"W	0.00	
13420.50†	89.964	359.913	7346.86	5112.97	4922.69	1555.08	40°01'00.059"N	104°40'16.529"W	0.00	
13520.50†	89.964	359.913	7346.93	5211.55	5022.69	1554.93	40°01'01.047"N	104°40'16.531"W	0.00	
13620.50†	89.964	359.913	7346.99	5310.12	5122.69	1554.78	40°01'02.035"N	104°40'16.533"W	0.00	
13720.50†	89.964	359.913	7347.05	5408.70	5222.69	1554.63	40°01'03.024"N	104°40'16.534"W	0.00	
13820.50†	89.964	359.913	7347.11	5507.28	5322.69	1554.48	40°01'04.012"N	104°40'16.536"W	0.00	
13920.50†	89.964	359.913	7347.17	5605.85	5422.69	1554.33	40°01'05.000"N	104°40'16.538"W	0.00	
14020.50†	89.964	359.913	7347.24	5704.43	5522.69	1554.17	40°01'05.988"N	104°40'16.540"W	0.00	
14120.50†	89.964	359.913	7347.30	5803.01	5622.68	1554.02	40°01'06.977"N	104°40'16.542"W	0.00	
14220.50†	89.964	359.913	7347.36	5901.59	5722.68	1553.87	40°01'07.965"N	104°40'16.544"W	0.00	
14320.50†	89.964	359.913	7347.42	6000.16	5822.68	1553.72	40°01'08.953"N	104°40'16.546"W	0.00	
14420.50†	89.964	359.913	7347.48	6098.74	5922.68	1553.57	40°01'09.941"N	104°40'16.548"W	0.00	

Planned Wellpath Report

BUFORD 33-7-3L (REV-A.0) PWP

Page 7 of 10

REFERENCE WELLPATH IDENTIFICATION

Operator	CONFLUENCE RESOURCES	Slot	SLOT#10 BUFORD 33-7-3L (960'FSL & 450'FWL,SEC.33)
Area	COLORADO	Well	BUFORD 33-7-3L
Field	WELD COUNTY (NAD83, TRUE NORTH)	Wellbore	BUFORD 33-7-3L PWB
Facility	SEC.33-T01N-R65W		

WELLPATH DATA (183 stations) † = interpolated/extrapolated station

MD [ft]	Inclination [°]	Azimuth [°]	TVD [ft]	Vert Sect [ft]	North [ft]	East [ft]	Latitude	Longitude	DLS [°/100ft]	Comments
14520.50†	89.964	359.913	7347.55	6197.32	6022.68	1553.42	40°01'10.930"N	104°40'16.549"W	0.00	
14620.50†	89.964	359.913	7347.61	6295.89	6122.68	1553.27	40°01'11.918"N	104°40'16.551"W	0.00	
14720.50†	89.964	359.913	7347.67	6394.47	6222.68	1553.12	40°01'12.906"N	104°40'16.553"W	0.00	
14820.50†	89.964	359.913	7347.73	6493.05	6322.68	1552.96	40°01'13.894"N	104°40'16.555"W	0.00	
14920.50†	89.964	359.913	7347.80	6591.62	6422.68	1552.81	40°01'14.882"N	104°40'16.557"W	0.00	
15020.50†	89.964	359.913	7347.86	6690.20	6522.68	1552.66	40°01'15.871"N	104°40'16.559"W	0.00	
15120.50†	89.964	359.913	7347.92	6788.78	6622.68	1552.51	40°01'16.859"N	104°40'16.561"W	0.00	
15220.50†	89.964	359.913	7347.98	6887.36	6722.68	1552.36	40°01'17.847"N	104°40'16.562"W	0.00	
15320.50†	89.964	359.913	7348.04	6985.93	6822.68	1552.21	40°01'18.835"N	104°40'16.564"W	0.00	
15420.50†	89.964	359.913	7348.11	7084.51	6922.68	1552.06	40°01'19.824"N	104°40'16.566"W	0.00	
15520.50†	89.964	359.913	7348.17	7183.09	7022.68	1551.90	40°01'20.812"N	104°40'16.568"W	0.00	
15620.50†	89.964	359.913	7348.23	7281.66	7122.68	1551.75	40°01'21.800"N	104°40'16.570"W	0.00	
15720.50†	89.964	359.913	7348.29	7380.24	7222.68	1551.60	40°01'22.788"N	104°40'16.572"W	0.00	
15820.50†	89.964	359.913	7348.35	7478.82	7322.68	1551.45	40°01'23.777"N	104°40'16.574"W	0.00	
15920.50†	89.964	359.913	7348.42	7577.40	7422.68	1551.30	40°01'24.765"N	104°40'16.575"W	0.00	
16020.50†	89.964	359.913	7348.48	7675.97	7522.68	1551.15	40°01'25.753"N	104°40'16.577"W	0.00	
16120.50†	89.964	359.913	7348.54	7774.55	7622.68	1551.00	40°01'26.741"N	104°40'16.579"W	0.00	
16220.50†	89.964	359.913	7348.60	7873.13	7722.68	1550.84	40°01'27.729"N	104°40'16.581"W	0.00	
16320.50†	89.964	359.913	7348.67	7971.70	7822.68	1550.69	40°01'28.718"N	104°40'16.583"W	0.00	
16420.50†	89.964	359.913	7348.73	8070.28	7922.68	1550.54	40°01'29.706"N	104°40'16.585"W	0.00	
16520.50†	89.964	359.913	7348.79	8168.86	8022.68	1550.39	40°01'30.694"N	104°40'16.587"W	0.00	
16620.50†	89.964	359.913	7348.85	8267.43	8122.68	1550.24	40°01'31.682"N	104°40'16.589"W	0.00	
16720.50†	89.964	359.913	7348.91	8366.01	8222.68	1550.09	40°01'32.671"N	104°40'16.590"W	0.00	
16820.50†	89.964	359.913	7348.98	8464.59	8322.68	1549.94	40°01'33.659"N	104°40'16.592"W	0.00	
16920.50†	89.964	359.913	7349.04	8563.17	8422.68	1549.79	40°01'34.647"N	104°40'16.594"W	0.00	
17020.50†	89.964	359.913	7349.10	8661.74	8522.68	1549.63	40°01'35.635"N	104°40'16.596"W	0.00	
17120.50†	89.964	359.913	7349.16	8760.32	8622.68	1549.48	40°01'36.623"N	104°40'16.598"W	0.00	
17220.50†	89.964	359.913	7349.22	8858.90	8722.68	1549.33	40°01'37.612"N	104°40'16.600"W	0.00	
17320.50†	89.964	359.913	7349.29	8957.47	8822.68	1549.18	40°01'38.600"N	104°40'16.602"W	0.00	
17420.50†	89.964	359.913	7349.35	9056.05	8922.68	1549.03	40°01'39.588"N	104°40'16.603"W	0.00	

Planned Wellpath Report

BUFORD 33-7-3L (REV-A.0) PWP

Page 8 of 10



REFERENCE WELLPATH IDENTIFICATION

Operator	CONFLUENCE RESOURCES	Slot	SLOT#10 BUFORD 33-7-3L (960'FSL & 450'FWL,SEC.33)
Area	COLORADO	Well	BUFORD 33-7-3L
Field	WELD COUNTY (NAD83, TRUE NORTH)	Wellbore	BUFORD 33-7-3L PWB
Facility	SEC.33-T01N-R65W		

WELLPATH DATA (183 stations) † = interpolated/extrapolated station

MD [ft]	Inclination [°]	Azimuth [°]	TVD [ft]	Vert Sect [ft]	North [ft]	East [ft]	Latitude	Longitude	DLS [°/100ft]	Comments
17520.50†	89.964	359.913	7349.41	9154.63	9022.68	1548.88	40°01'40.576"N	104°40'16.605"W	0.00	
17620.50†	89.964	359.913	7349.47	9253.20	9122.68	1548.73	40°01'41.565"N	104°40'16.607"W	0.00	
17663.34	89.964	359.913	7349.50 ²	9295.44	9165.52	1548.66	40°01'41.988"N	104°40'16.608"W	0.00	End of Tangent

HOLE & CASING SECTIONS - Ref Wellbore: BUFORD 33-7-3L PWB Ref Wellpath: BUFORD 33-7-3L (REV-A.0) PWP

String/Diameter	Start MD [ft]	End MD [ft]	Interval [ft]	Start TVD [ft]	End TVD [ft]	Start N/S [ft]	Start E/W [ft]	End N/S [ft]	End E/W [ft]
13.5in Open Hole	20.50	1500.00	1479.50	20.50	1500.00	0.00	0.00	0.00	0.00
9.625in Casing Surface	20.50	1500.00	1479.50	20.50	1500.00	0.00	0.00	0.00	0.00
8.5in Open Hole	1500.00	17663.34	16163.34	1500.00	7349.50	0.00	0.00	9165.52	1548.66

TARGETS

Name	MD [ft]	TVD [ft]	North [ft]	East [ft]	Grid East [US ft]	Grid North [US ft]	Latitude	Longitude	Shape
SEC.28-T01N-R65W		1.50	25.50	-148.48	3230456.90	1245096.09	40°00'11.664"N	104°40'38.424"W	polygon
SEC.33-T01N-R65W		1.50	25.50	-148.48	3230456.90	1245096.09	40°00'11.664"N	104°40'38.424"W	polygon
1) BUFORD 33-7-3L LP REV-1 (470'FSL & 2010'FWL,SEC.33)	8009.71	7343.50	-488.10	1563.27	3232173.28	1244598.42	40°00'06.588"N	104°40'16.428"W	point
2) BUFORD 33-7-3L BHL REV-1 (470'FNL & 2010'FWL,SEC.28)	17663.34	7349.50	9165.52	1548.66	3232069.06	1254251.14	40°01'41.988"N	104°40'16.608"W	point

Planned Wellpath Report

BUFORD 33-7-3L (REV-A.0) PWP

Page 9 of 10



REFERENCE WELLPATH IDENTIFICATION			
Operator	CONFLUENCE RESOURCES	Slot	SLOT#10 BUFORD 33-7-3L (960'FSL & 450'FWL,SEC.33)
Area	COLORADO	Well	BUFORD 33-7-3L
Field	WELD COUNTY (NAD83, TRUE NORTH)	Wellbore	BUFORD 33-7-3L PWB
Facility	SEC.33-T01N-R65W		

SURVEY PROGRAM - Ref Wellbore: BUFORD 33-7-3L PWB Ref Wellpath: BUFORD 33-7-3L (REV-A.0) PWP				
Start MD [ft]	End MD [ft]	Positional Uncertainty Model	Log Name/Comment	Wellbore
20.50	1500.00	BHI NaviTrak (Rotating+Axial Corr)		BUFORD 33-7-3L PWB
1500.00	17663.34	BHI AutoTrak Curve (Short)		BUFORD 33-7-3L PWB

Planned Wellpath Report

BUFORD 33-7-3L (REV-A.0) PWP

Page 10 of 10

REFERENCE WELLPATH IDENTIFICATION

Operator	CONFLUENCE RESOURCES	Slot	SLOT#10 BUFORD 33-7-3L (960'FSL & 450'FWL,SEC.33)
Area	COLORADO	Well	BUFORD 33-7-3L
Field	WELD COUNTY (NAD83, TRUE NORTH)	Wellbore	BUFORD 33-7-3L PWB
Facility	SEC.33-T01N-R65W		

DESIGN COMMENTS

MD [ft]	Inclination [°]	Azimuth [°]	TVD [ft]	Comment
20.50	0.000	127.595	20.50	Tie On
1700.00	0.000	127.595	1700.00	End of Tangent
2756.48	21.130	127.595	2732.70	End of Build
6982.76	21.130	127.595	6674.83	End of Tangent
8009.71	89.964	359.913	7343.50	End of 3D Arc
17663.34	89.964	359.913	7349.50	End of Tangent