

# CONFLUENCE RESOURCES

Location: COLORADO Slot: SLOT#09 BUFORD 33-7-1L (935'FSL & 450'FWL,SEC.33)  
Field: WELD COUNTY (NAD83, TRUE NORTH) Well: BUFORD 33-7-1L  
Facility: SEC.33-T01N-R65W Wellbore: BUFORD 33-7-1L PWB

Plot reference wellpath is BUFORD 33-7-1L (REV-A.0) PWP	Grid System: NAD83 / Lambert Colorado SP, Northern Zone (501), US feet
True vertical depths are referenced to RIG (20.5) (RKB)	North Reference: True north
Measured depths are referenced to RIG (20.5) (RKB)	Scale: True distance
RIG (20.5) (RKB) to Mean Sea Level: 5101.5 feet	Depths are in feet
Mean Sea Level to Mud line (At Slot: SLOT#09 BUFORD 33-7-1L (935'FSL & 450'FWL,SEC.33)): 0 feet	Created by: robale01 on 2019-10-09
Coordinates are in feet referenced to Slot	Database: WADENVER

## Location Information

Facility Name				Grid East (US ft)	Grid North (US ft)	Latitude	Longitude
SEC.33-T01N-R65W				3230456.897	1245096.090	40°00'11.664"N	104°40'38.424"W
Slot	Local N (ft)	Local E (ft)		Grid East (US ft)	Grid North (US ft)	Latitude	Longitude
SLOT#09 BUFORD 33-7-1L (935'FSL & 450'FWL,SEC.33)	-51.00	148.48		3230605.839	1245046.471	40°00'11.160"N	104°40'38.516"W
RIG (20.5) (RKB) to Mud line (At Slot: SLOT#09 BUFORD 33-7-1L (935'FSL & 450'FWL,SEC.33))						5101.5ft	
Mean Sea Level to Mud line (At Slot: SLOT#09 BUFORD 33-7-1L (935'FSL & 450'FWL,SEC.33))						0ft	
RIG (20.5) (RKB) to Mean Sea Level						5101.5ft	

## Targets

Name	MD (ft)	TVD (ft)	Local N (ft)	Local E (ft)	Grid East (US ft)	Grid North (US ft)	Latitude	Longitude
SEC.28-T01N-R65W		1.50	51.00	-148.48	3230456.90	1245096.09	40°00'11.664"N	104°40'38.424"W
SEC.33-T01N-R65W		1.50	51.00	-148.48	3230456.90	1245096.09	40°00'11.664"N	104°40'38.424"W
BUFORD 33-7-1L LP REV-1 (470'FSL & 1746'FWL,SEC.33)	7734.48	7129.50	-462.61	1299.92	3231909.95	1244595.96	40°00'06.588"N	104°40'19.812"W
BUFORD 33-7-1L BHL REV-1 (470'FSL & 1746'FWL,SEC.28)	17388.15	7156.50	9191.01	1285.42	3231805.84	1254248.69	40°01'41.988"N	104°40'19.992"W

## Survey Program

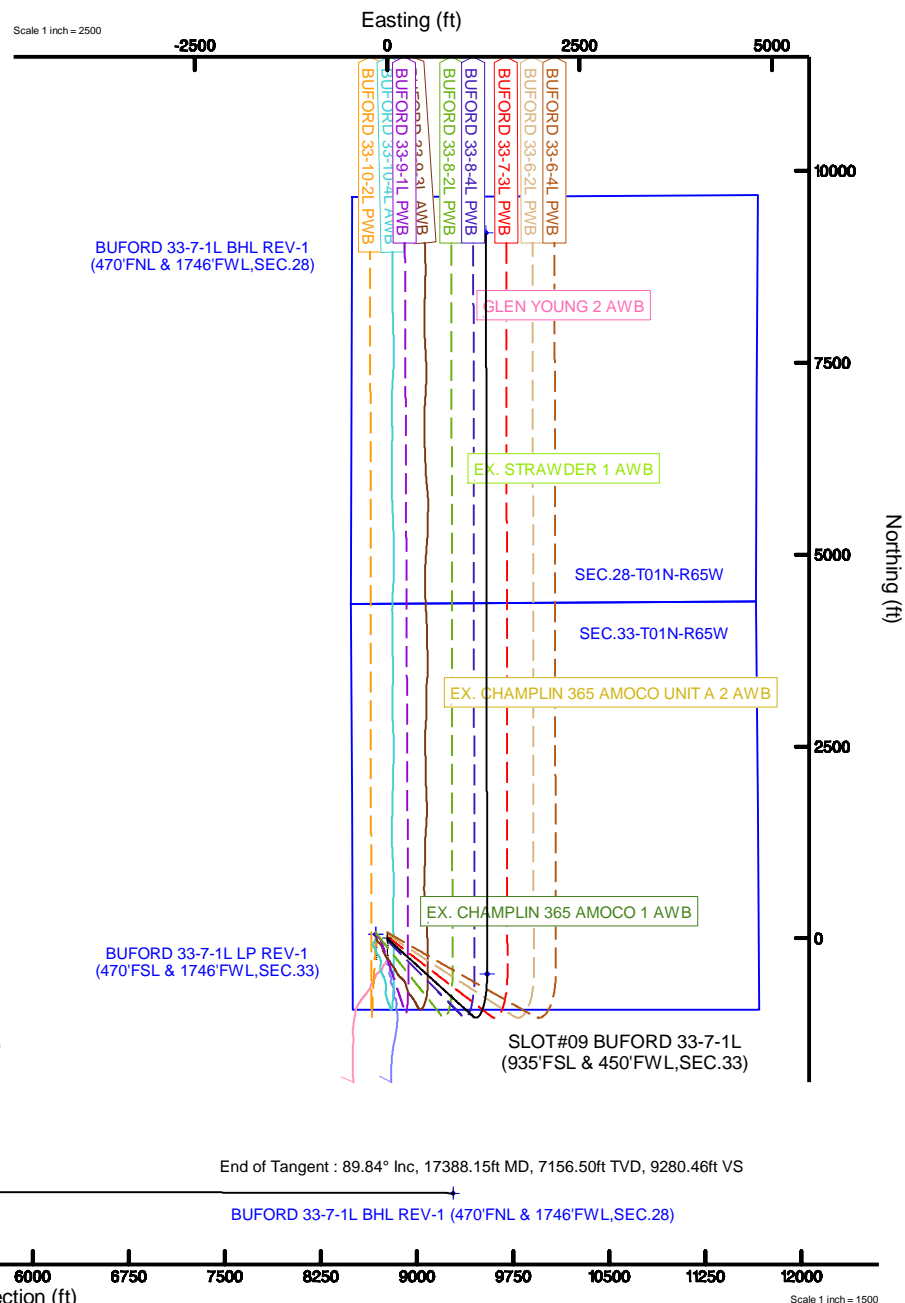
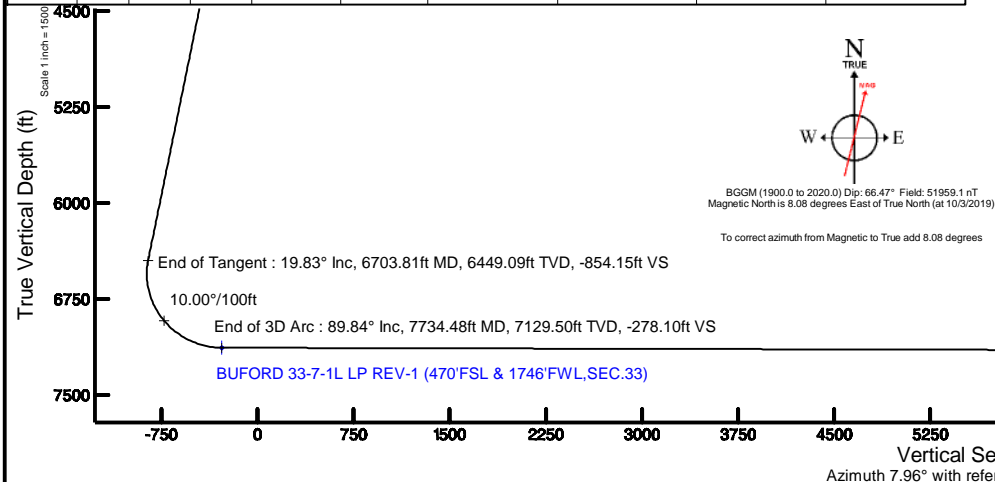
Start MD (ft)	End MD (ft)	Tool	Model	Log Name/Comment	Wellbore
20.50	1500.00	BHI NavTrak	BHI NavTrak (Rotating+Axial Corr)		BUFORD 33-7-1L PWB
1500.00	17388.15	BHI AutoTrak Curve	BHI AutoTrak Curve (Short)		BUFORD 33-7-1L PWB

## Well Profile Data

Design Comment	MD (ft)	Inc (°)	Az (°)	TVD (ft)	Local N (ft)	Local E (ft)	DLS (°/100ft)	VS (ft)
Tie On	20.50	0.000	132.299	20.50	0.00	0.00	0.00	0.00
End of Tangent	1750.00	0.000	132.299	1750.00	0.00	0.00	0.00	0.00
End of Build	2741.70	19.834	132.299	2722.01	-114.37	125.70	2.00	-95.86
End of Tangent	6703.81	19.834	132.299	6449.09	-1019.10	1120.02	0.00	-854.15
End of 3D Arc	7734.48	89.840	359.914	7129.50	-462.61	1299.92	10.00	-278.10
End of Tangent	17388.15	89.840	359.914	7156.50	9191.01	1285.42	0.00	9280.46

## Bottom Hole Location

MD (ft)	Inc (°)	Az (°)	TVD (ft)	Local N (ft)	Local E (ft)	Grid East (US ft)	Grid North (US ft)	Latitude	Longitude
17388.15	89.840	359.914	7156.50	9191.01	1285.42	3231805.84	1254248.69	40°01'41.988"N	104°40'19.992"W



# Planned Wellpath Report

BUFORD 33-7-1L (REV-A.0) PWP

Page 1 of 8

## REFERENCE WELLPATH IDENTIFICATION

Operator	CONFLUENCE RESOURCES	Slot	SLOT#09 BUFORD 33-7-1L (935'FSL & 450'FWL,SEC.33)
Area	COLORADO	Well	BUFORD 33-7-1L
Field	WELD COUNTY (NAD83, TRUE NORTH)	Wellbore	BUFORD 33-7-1L PWB
Facility	SEC.33-T01N-R65W		

## REPORT SETUP INFORMATION

Projection System	NAD83 / Lambert Colorado SP, Northern Zone (501), US feet	Software System	WellArchitect® 5.1
North Reference	True	User	Robiale01
Scale	0.999966	Report Generated	10/9/2019 at 4:16:04 PM
Convergence at slot	0.53° East	Database/Source file	WA DENVER/BUFORD_33-7-1L__REV-A.0__PWP.xml

## WELLPATH LOCATION

	Local coordinates		Grid coordinates		Geographic coordinates	
	North[ft]	East[ft]	Easting[US ft]	Northing[US ft]	Latitude	Longitude
Slot Location	-51.00	148.48	3230605.84	1245046.47	40°00'11.160"N	104°40'36.516"W
Facility Reference Pt			3230456.90	1245096.09	40°00'11.664"N	104°40'38.424"W
Field Reference Pt			3230456.90	1245096.09	40°00'11.664"N	104°40'38.424"W

## WELLPATH DATUM

Calculation method	Minimum curvature	RIG (20.5') (RKB) to Facility Vertical Datum	5101.50ft
Horizontal Reference Pt	Slot	RIG (20.5') (RKB) to Mean Sea Level	5101.50ft
Vertical Reference Pt	RIG (20.5') (RKB)	RIG (20.5') (RKB) to Mud Line at Slot (SLOT#09 BUFORD 33-7-1L (935'FSL & 450'FWL,SEC.33))	5101.50ft
MD Reference Pt	RIG (20.5') (RKB)	Section Origin	N 0.00, E 0.00 ft
Field Vertical Reference	Mean Sea Level	Section Azimuth	7.96°

# Planned Wellpath Report

BUFORD 33-7-1L (REV-A.0) PWP

Page 2 of 8



## REFERENCE WELLPATH IDENTIFICATION

Operator	CONFLUENCE RESOURCES	Slot	SLOT#09 BUFORD 33-7-1L (935'FSL & 450'FWL,SEC.33)
Area	COLORADO	Well	BUFORD 33-7-1L
Field	WELD COUNTY (NAD83, TRUE NORTH)	Wellbore	BUFORD 33-7-1L PWB
Facility	SEC.33-T01N-R65W		

## WELLPATH DATA (180 stations) † = interpolated/extrapolated station

MD [ft]	Inclination [°]	Azimuth [°]	TVD [ft]	Vert Sect [ft]	North [ft]	East [ft]	Latitude	Longitude	DLS [°/100ft]	Comments
0.00†	0.000	132.299	0.00	0.00	0.00	0.00	40°00'11.160"N	104°40'36.516"W	0.00	
20.50	0.000	132.299	20.50	0.00	0.00	0.00	40°00'11.160"N	104°40'36.516"W	0.00	Tie On
120.50†	0.000	132.299	120.50	0.00	0.00	0.00	40°00'11.160"N	104°40'36.516"W	0.00	
220.50†	0.000	132.299	220.50	0.00	0.00	0.00	40°00'11.160"N	104°40'36.516"W	0.00	
320.50†	0.000	132.299	320.50	0.00	0.00	0.00	40°00'11.160"N	104°40'36.516"W	0.00	
420.50†	0.000	132.299	420.50	0.00	0.00	0.00	40°00'11.160"N	104°40'36.516"W	0.00	
520.50†	0.000	132.299	520.50	0.00	0.00	0.00	40°00'11.160"N	104°40'36.516"W	0.00	
620.50†	0.000	132.299	620.50	0.00	0.00	0.00	40°00'11.160"N	104°40'36.516"W	0.00	
720.50†	0.000	132.299	720.50	0.00	0.00	0.00	40°00'11.160"N	104°40'36.516"W	0.00	
820.50†	0.000	132.299	820.50	0.00	0.00	0.00	40°00'11.160"N	104°40'36.516"W	0.00	
920.50†	0.000	132.299	920.50	0.00	0.00	0.00	40°00'11.160"N	104°40'36.516"W	0.00	
1020.50†	0.000	132.299	1020.50	0.00	0.00	0.00	40°00'11.160"N	104°40'36.516"W	0.00	
1120.50†	0.000	132.299	1120.50	0.00	0.00	0.00	40°00'11.160"N	104°40'36.516"W	0.00	
1220.50†	0.000	132.299	1220.50	0.00	0.00	0.00	40°00'11.160"N	104°40'36.516"W	0.00	
1320.50†	0.000	132.299	1320.50	0.00	0.00	0.00	40°00'11.160"N	104°40'36.516"W	0.00	
1420.50†	0.000	132.299	1420.50	0.00	0.00	0.00	40°00'11.160"N	104°40'36.516"W	0.00	
1520.50†	0.000	132.299	1520.50	0.00	0.00	0.00	40°00'11.160"N	104°40'36.516"W	0.00	
1620.50†	0.000	132.299	1620.50	0.00	0.00	0.00	40°00'11.160"N	104°40'36.516"W	0.00	
1720.50†	0.000	132.299	1720.50	0.00	0.00	0.00	40°00'11.160"N	104°40'36.516"W	0.00	
1750.00	0.000	132.299	1750.00	0.00	0.00	0.00	40°00'11.160"N	104°40'36.516"W	0.00	End of Tangent
1820.50†	1.410	132.299	1820.49	-0.49	-0.58	0.64	40°00'11.154"N	104°40'36.508"W	2.00	
1920.50†	3.410	132.299	1920.40	-2.86	-3.41	3.75	40°00'11.126"N	104°40'36.468"W	2.00	
2020.50†	5.410	132.299	2020.10	-7.20	-8.59	9.44	40°00'11.075"N	104°40'36.395"W	2.00	
2120.50†	7.410	132.299	2119.47	-13.50	-16.10	17.70	40°00'11.001"N	104°40'36.289"W	2.00	
2220.50†	9.410	132.299	2218.39	-21.74	-25.94	28.51	40°00'10.904"N	104°40'36.150"W	2.00	
2320.50†	11.410	132.299	2316.74	-31.94	-38.10	41.88	40°00'10.783"N	104°40'35.978"W	2.00	
2420.50†	13.410	132.299	2414.40	-44.06	-52.57	57.77	40°00'10.641"N	104°40'35.774"W	2.00	
2520.50†	15.410	132.299	2511.24	-58.09	-69.31	76.18	40°00'10.475"N	104°40'35.537"W	2.00	
2620.50†	17.410	132.299	2607.17	-74.03	-88.33	97.07	40°00'10.287"N	104°40'35.269"W	2.00	
2720.50†	19.410	132.299	2702.04	-91.84	-109.58	120.43	40°00'10.077"N	104°40'34.968"W	2.00	

# Planned Wellpath Report

BUFORD 33-7-1L (REV-A.0) PWP

Page 3 of 8



## REFERENCE WELLPATH IDENTIFICATION

Operator	CONFLUENCE RESOURCES	Slot	SLOT#09 BUFORD 33-7-1L (935'FSL & 450'FWL,SEC.33)
Area	COLORADO	Well	BUFORD 33-7-1L
Field	WELD COUNTY (NAD83, TRUE NORTH)	Wellbore	BUFORD 33-7-1L PWB
Facility	SEC.33-T01N-R65W		

## WELLPATH DATA (180 stations) † = interpolated/extrapolated station

MD [ft]	Inclination [°]	Azimuth [°]	TVD [ft]	Vert Sect [ft]	North [ft]	East [ft]	Latitude	Longitude	DLS [°/100ft]	Comments
2741.70	19.834	132.299	2722.01	-95.86	-114.37	125.70	40°00'10.030"N	104°40'34.901"W	2.00	End of Build
2820.50†	19.834	132.299	2796.14	-110.94	-132.36	145.47	40°00'09.852"N	104°40'34.647"W	0.00	
2920.50†	19.834	132.299	2890.21	-130.08	-155.20	170.57	40°00'09.626"N	104°40'34.324"W	0.00	
3020.50†	19.834	132.299	2984.27	-149.22	-178.03	195.66	40°00'09.401"N	104°40'34.002"W	0.00	
3120.50†	19.834	132.299	3078.34	-168.35	-200.87	220.76	40°00'09.175"N	104°40'33.679"W	0.00	
3220.50†	19.834	132.299	3172.41	-187.49	-223.70	245.85	40°00'08.949"N	104°40'33.357"W	0.00	
3320.50†	19.834	132.299	3266.48	-206.63	-246.54	270.95	40°00'08.724"N	104°40'33.034"W	0.00	
3420.50†	19.834	132.299	3360.55	-225.77	-269.37	296.05	40°00'08.498"N	104°40'32.712"W	0.00	
3520.50†	19.834	132.299	3454.61	-244.91	-292.21	321.14	40°00'08.272"N	104°40'32.389"W	0.00	
3620.50†	19.834	132.299	3548.68	-264.05	-315.04	346.24	40°00'08.047"N	104°40'32.067"W	0.00	
3720.50†	19.834	132.299	3642.75	-283.19	-337.87	371.33	40°00'07.821"N	104°40'31.744"W	0.00	
3820.50†	19.834	132.299	3736.82	-302.32	-360.71	396.43	40°00'07.595"N	104°40'31.422"W	0.00	
3920.50†	19.834	132.299	3830.88	-321.46	-383.54	421.53	40°00'07.370"N	104°40'31.099"W	0.00	
4020.50†	19.834	132.299	3924.95	-340.60	-406.38	446.62	40°00'07.144"N	104°40'30.777"W	0.00	
4120.50†	19.834	132.299	4019.02	-359.74	-429.21	471.72	40°00'06.918"N	104°40'30.454"W	0.00	
4220.50†	19.834	132.299	4113.09	-378.88	-452.05	496.81	40°00'06.693"N	104°40'30.132"W	0.00	
4320.50†	19.834	132.299	4207.16	-398.02	-474.88	521.91	40°00'06.467"N	104°40'29.809"W	0.00	
4420.50†	19.834	132.299	4301.22	-417.15	-497.72	547.01	40°00'06.241"N	104°40'29.487"W	0.00	
4520.50†	19.834	132.299	4395.29	-436.29	-520.55	572.10	40°00'06.016"N	104°40'29.165"W	0.00	
4620.50†	19.834	132.299	4489.36	-455.43	-543.39	597.20	40°00'05.790"N	104°40'28.842"W	0.00	
4720.50†	19.834	132.299	4583.43	-474.57	-566.22	622.29	40°00'05.564"N	104°40'28.520"W	0.00	
4820.50†	19.834	132.299	4677.50	-493.71	-589.06	647.39	40°00'05.339"N	104°40'28.197"W	0.00	
4920.50†	19.834	132.299	4771.56	-512.85	-611.89	672.48	40°00'05.113"N	104°40'27.875"W	0.00	
5020.50†	19.834	132.299	4865.63	-531.99	-634.72	697.58	40°00'04.887"N	104°40'27.552"W	0.00	
5120.50†	19.834	132.299	4959.70	-551.12	-657.56	722.68	40°00'04.662"N	104°40'27.230"W	0.00	
5220.50†	19.834	132.299	5053.77	-570.26	-680.39	747.77	40°00'04.436"N	104°40'26.907"W	0.00	
5320.50†	19.834	132.299	5147.84	-589.40	-703.23	772.87	40°00'04.210"N	104°40'26.585"W	0.00	
5420.50†	19.834	132.299	5241.90	-608.54	-726.06	797.96	40°00'03.985"N	104°40'26.262"W	0.00	
5520.50†	19.834	132.299	5335.97	-627.68	-748.90	823.06	40°00'03.759"N	104°40'25.940"W	0.00	
5620.50†	19.834	132.299	5430.04	-646.82	-771.73	848.16	40°00'03.533"N	104°40'25.617"W	0.00	

# Planned Wellpath Report

BUFORD 33-7-1L (REV-A.0) PWP

Page 4 of 8



## REFERENCE WELLPATH IDENTIFICATION

Operator	CONFLUENCE RESOURCES	Slot	SLOT#09 BUFORD 33-7-1L (935'FSL & 450'FWL,SEC.33)
Area	COLORADO	Well	BUFORD 33-7-1L
Field	WELD COUNTY (NAD83, TRUE NORTH)	Wellbore	BUFORD 33-7-1L PWB
Facility	SEC.33-T01N-R65W		

## WELLPATH DATA (180 stations) † = interpolated/extrapolated station

MD [ft]	Inclination [°]	Azimuth [°]	TVD [ft]	Vert Sect [ft]	North [ft]	East [ft]	Latitude	Longitude	DLS [°/100ft]	Comments
5720.50†	19.834	132.299	5524.11	-665.96	-794.57	873.25	40°00'03.308"N	104°40'25.295"W	0.00	
5820.50†	19.834	132.299	5618.18	-685.09	-817.40	898.35	40°00'03.082"N	104°40'24.972"W	0.00	
5920.50†	19.834	132.299	5712.24	-704.23	-840.24	923.44	40°00'02.856"N	104°40'24.650"W	0.00	
6020.50†	19.834	132.299	5806.31	-723.37	-863.07	948.54	40°00'02.631"N	104°40'24.327"W	0.00	
6120.50†	19.834	132.299	5900.38	-742.51	-885.90	973.64	40°00'02.405"N	104°40'24.005"W	0.00	
6220.50†	19.834	132.299	5994.45	-761.65	-908.74	998.73	40°00'02.179"N	104°40'23.683"W	0.00	
6320.50†	19.834	132.299	6088.52	-780.79	-931.57	1023.83	40°00'01.954"N	104°40'23.360"W	0.00	
6420.50†	19.834	132.299	6182.58	-799.93	-954.41	1048.92	40°00'01.728"N	104°40'23.038"W	0.00	
6520.50†	19.834	132.299	6276.65	-819.06	-977.24	1074.02	40°00'01.502"N	104°40'22.715"W	0.00	
6620.50†	19.834	132.299	6370.72	-838.20	-1000.08	1099.12	40°00'01.277"N	104°40'22.393"W	0.00	
6703.81	19.834	132.299	6449.09	-854.15	-1019.10	1120.02	40°00'01.089"N	104°40'22.124"W	0.00	End of Tangent
6720.50†	18.787	128.368	6464.84	-857.10	-1022.68	1124.22	40°00'01.053"N	104°40'22.070"W	10.00	
6820.50†	14.989	95.930	6560.72	-864.82	-1034.04	1149.78	40°00'00.941"N	104°40'21.742"W	10.00	
6920.50†	17.082	59.910	6657.05	-855.28	-1027.99	1175.41	40°00'01.001"N	104°40'21.412"W	10.00	
7020.50†	23.545	37.532	6750.92	-828.79	-1004.73	1200.35	40°00'01.231"N	104°40'21.092"W	10.00	
7120.50†	31.815	25.284	6839.47	-786.14	-964.96	1223.84	40°00'01.624"N	104°40'20.790"W	10.00	
7220.50†	40.805	17.833	6920.01	-728.64	-909.88	1245.16	40°00'02.168"N	104°40'20.516"W	10.00	
7320.50†	50.124	12.722	6990.09	-658.03	-841.17	1263.66	40°00'02.847"N	104°40'20.278"W	10.00	
7420.50†	59.613	8.853	7047.59	-576.46	-760.92	1278.79	40°00'03.640"N	104°40'20.084"W	10.00	
7520.50†	69.196	5.677	7090.75	-486.40	-671.56	1290.08	40°00'04.523"N	104°40'19.939"W	10.00	
7620.50†	78.830	2.885	7118.26	-390.60	-575.82	1297.19	40°00'05.469"N	104°40'19.847"W	10.00	
7720.50†	88.488	0.274	7129.30	-291.95	-476.59	1299.90	40°00'06.450"N	104°40'19.812"W	10.00	
7734.48	89.840	359.914	7129.50†	-278.10	-462.61	1299.92	40°00'06.588"N	104°40'19.812"W	10.00	End of 3D Arc
7820.50†	89.840	359.914	7129.74	-192.93	-376.60	1299.80	40°00'07.438"N	104°40'19.814"W	0.00	
7920.50†	89.840	359.914	7130.02	-93.92	-276.60	1299.64	40°00'08.426"N	104°40'19.815"W	0.00	
8020.50†	89.840	359.914	7130.30	5.10	-176.60	1299.49	40°00'09.414"N	104°40'19.817"W	0.00	
8120.50†	89.840	359.914	7130.58	104.11	-76.60	1299.34	40°00'10.403"N	104°40'19.819"W	0.00	
8220.50†	89.840	359.914	7130.86	203.13	23.40	1299.19	40°00'11.391"N	104°40'19.821"W	0.00	
8320.50†	89.840	359.914	7131.14	302.14	123.40	1299.04	40°00'12.379"N	104°40'19.823"W	0.00	
8420.50†	89.840	359.914	7131.42	401.16	223.40	1298.89	40°00'13.367"N	104°40'19.825"W	0.00	

# Planned Wellpath Report

BUFORD 33-7-1L (REV-A.0) PWP

Page 5 of 8

## REFERENCE WELLPATH IDENTIFICATION

Operator	CONFLUENCE RESOURCES	Slot	SLOT#09 BUFORD 33-7-1L (935'FSL & 450'FWL,SEC.33)
Area	COLORADO	Well	BUFORD 33-7-1L
Field	WELD COUNTY (NAD83, TRUE NORTH)	Wellbore	BUFORD 33-7-1L PWB
Facility	SEC.33-T01N-R65W		

## WELLPATH DATA (180 stations) † = interpolated/extrapolated station

MD [ft]	Inclination [°]	Azimuth [°]	TVD [ft]	Vert Sect [ft]	North [ft]	East [ft]	Latitude	Longitude	DLS [°/100ft]	Comments
8520.50†	89.840	359.914	7131.70	500.17	323.40	1298.74	40°00'14.356"N	104°40'19.827"W	0.00	
8620.50†	89.840	359.914	7131.98	599.18	423.40	1298.59	40°00'15.344"N	104°40'19.829"W	0.00	
8720.50†	89.840	359.914	7132.26	698.20	523.40	1298.44	40°00'16.332"N	104°40'19.830"W	0.00	
8820.50†	89.840	359.914	7132.54	797.21	623.40	1298.29	40°00'17.320"N	104°40'19.832"W	0.00	
8920.50†	89.840	359.914	7132.82	896.23	723.40	1298.14	40°00'18.309"N	104°40'19.834"W	0.00	
9020.50†	89.840	359.914	7133.10	995.24	823.40	1297.99	40°00'19.297"N	104°40'19.836"W	0.00	
9120.50†	89.840	359.914	7133.38	1094.26	923.40	1297.84	40°00'20.285"N	104°40'19.838"W	0.00	
9220.50†	89.840	359.914	7133.66	1193.27	1023.40	1297.69	40°00'21.273"N	104°40'19.840"W	0.00	
9320.50†	89.840	359.914	7133.94	1292.29	1123.40	1297.54	40°00'22.261"N	104°40'19.842"W	0.00	
9420.50†	89.840	359.914	7134.22	1391.30	1223.40	1297.39	40°00'23.250"N	104°40'19.843"W	0.00	
9520.50†	89.840	359.914	7134.50	1490.32	1323.40	1297.24	40°00'24.238"N	104°40'19.845"W	0.00	
9620.50†	89.840	359.914	7134.77	1589.33	1423.40	1297.09	40°00'25.226"N	104°40'19.847"W	0.00	
9720.50†	89.840	359.914	7135.05	1688.35	1523.39	1296.94	40°00'26.214"N	104°40'19.849"W	0.00	
9820.50†	89.840	359.914	7135.33	1787.36	1623.39	1296.79	40°00'27.203"N	104°40'19.851"W	0.00	
9920.50†	89.840	359.914	7135.61	1886.38	1723.39	1296.64	40°00'28.191"N	104°40'19.853"W	0.00	
10020.50†	89.840	359.914	7135.89	1985.39	1823.39	1296.49	40°00'29.179"N	104°40'19.855"W	0.00	
10120.50†	89.840	359.914	7136.17	2084.41	1923.39	1296.34	40°00'30.167"N	104°40'19.856"W	0.00	
10220.50†	89.840	359.914	7136.45	2183.42	2023.39	1296.19	40°00'31.155"N	104°40'19.858"W	0.00	
10320.50†	89.840	359.914	7136.73	2282.44	2123.39	1296.04	40°00'32.144"N	104°40'19.860"W	0.00	
10420.50†	89.840	359.914	7137.01	2381.45	2223.39	1295.89	40°00'33.132"N	104°40'19.862"W	0.00	
10520.50†	89.840	359.914	7137.29	2480.47	2323.39	1295.74	40°00'34.120"N	104°40'19.864"W	0.00	
10620.50†	89.840	359.914	7137.57	2579.48	2423.39	1295.59	40°00'35.108"N	104°40'19.866"W	0.00	
10720.50†	89.840	359.914	7137.85	2678.50	2523.39	1295.44	40°00'36.097"N	104°40'19.868"W	0.00	
10820.50†	89.840	359.914	7138.13	2777.51	2623.39	1295.29	40°00'37.085"N	104°40'19.870"W	0.00	
10920.50†	89.840	359.914	7138.41	2876.53	2723.39	1295.14	40°00'38.073"N	104°40'19.871"W	0.00	
11020.50†	89.840	359.914	7138.69	2975.54	2823.39	1294.99	40°00'39.061"N	104°40'19.873"W	0.00	
11120.50†	89.840	359.914	7138.97	3074.56	2923.39	1294.84	40°00'40.050"N	104°40'19.875"W	0.00	
11220.50†	89.840	359.914	7139.25	3173.57	3023.39	1294.69	40°00'41.038"N	104°40'19.877"W	0.00	
11320.50†	89.840	359.914	7139.53	3272.58	3123.39	1294.54	40°00'42.026"N	104°40'19.879"W	0.00	
11420.50†	89.840	359.914	7139.81	3371.60	3223.39	1294.39	40°00'43.014"N	104°40'19.881"W	0.00	



# Planned Wellpath Report

BUFORD 33-7-1L (REV-A.0) PWP

Page 6 of 8

## REFERENCE WELLPATH IDENTIFICATION

Operator	CONFLUENCE RESOURCES	Slot	SLOT#09 BUFORD 33-7-1L (935'FSL & 450'FWL,SEC.33)
Area	COLORADO	Well	BUFORD 33-7-1L
Field	WELD COUNTY (NAD83, TRUE NORTH)	Wellbore	BUFORD 33-7-1L PWB
Facility	SEC.33-T01N-R65W		

## WELLPATH DATA (180 stations) † = interpolated/extrapolated station

MD [ft]	Inclination [°]	Azimuth [°]	TVD [ft]	Vert Sect [ft]	North [ft]	East [ft]	Latitude	Longitude	DLS [°/100ft]	Comments
11520.50†	89.840	359.914	7140.09	3470.61	3323.39	1294.23	40°00'44.002"N	104°40'19.883"W	0.00	
11620.50†	89.840	359.914	7140.37	3569.63	3423.39	1294.08	40°00'44.991"N	104°40'19.884"W	0.00	
11720.50†	89.840	359.914	7140.65	3668.64	3523.38	1293.93	40°00'45.979"N	104°40'19.886"W	0.00	
11820.50†	89.840	359.914	7140.93	3767.66	3623.38	1293.78	40°00'46.967"N	104°40'19.888"W	0.00	
11920.50†	89.840	359.914	7141.21	3866.67	3723.38	1293.63	40°00'47.955"N	104°40'19.890"W	0.00	
12020.50†	89.840	359.914	7141.49	3965.69	3823.38	1293.48	40°00'48.944"N	104°40'19.892"W	0.00	
12120.50†	89.840	359.914	7141.77	4064.70	3923.38	1293.33	40°00'49.932"N	104°40'19.894"W	0.00	
12220.50†	89.840	359.914	7142.05	4163.72	4023.38	1293.18	40°00'50.920"N	104°40'19.896"W	0.00	
12320.50†	89.840	359.914	7142.33	4262.73	4123.38	1293.03	40°00'51.908"N	104°40'19.897"W	0.00	
12420.50†	89.840	359.914	7142.61	4361.75	4223.38	1292.88	40°00'52.896"N	104°40'19.899"W	0.00	
12520.50†	89.840	359.914	7142.89	4460.76	4323.38	1292.73	40°00'53.885"N	104°40'19.901"W	0.00	
12620.50†	89.840	359.914	7143.17	4559.78	4423.38	1292.58	40°00'54.873"N	104°40'19.903"W	0.00	
12720.50†	89.840	359.914	7143.45	4658.79	4523.38	1292.43	40°00'55.861"N	104°40'19.905"W	0.00	
12820.50†	89.840	359.914	7143.72	4757.81	4623.38	1292.28	40°00'56.849"N	104°40'19.907"W	0.00	
12920.50†	89.840	359.914	7144.00	4856.82	4723.38	1292.13	40°00'57.838"N	104°40'19.909"W	0.00	
13020.50†	89.840	359.914	7144.28	4955.84	4823.38	1291.98	40°00'58.826"N	104°40'19.911"W	0.00	
13120.50†	89.840	359.914	7144.56	5054.85	4923.38	1291.83	40°00'59.814"N	104°40'19.912"W	0.00	
13220.50†	89.840	359.914	7144.84	5153.87	5023.38	1291.68	40°01'00.802"N	104°40'19.914"W	0.00	
13320.50†	89.840	359.914	7145.12	5252.88	5123.38	1291.53	40°01'01.790"N	104°40'19.916"W	0.00	
13420.50†	89.840	359.914	7145.40	5351.90	5223.38	1291.38	40°01'02.779"N	104°40'19.918"W	0.00	
13520.50†	89.840	359.914	7145.68	5450.91	5323.38	1291.23	40°01'03.767"N	104°40'19.920"W	0.00	
13620.50†	89.840	359.914	7145.96	5549.93	5423.38	1291.08	40°01'04.755"N	104°40'19.922"W	0.00	
13720.50†	89.840	359.914	7146.24	5648.94	5523.37	1290.93	40°01'05.743"N	104°40'19.924"W	0.00	
13820.50†	89.840	359.914	7146.52	5747.96	5623.37	1290.78	40°01'06.732"N	104°40'19.925"W	0.00	
13920.50†	89.840	359.914	7146.80	5846.97	5723.37	1290.63	40°01'07.720"N	104°40'19.927"W	0.00	
14020.50†	89.840	359.914	7147.08	5945.99	5823.37	1290.48	40°01'08.708"N	104°40'19.929"W	0.00	
14120.50†	89.840	359.914	7147.36	6045.00	5923.37	1290.33	40°01'09.696"N	104°40'19.931"W	0.00	
14220.50†	89.840	359.914	7147.64	6144.01	6023.37	1290.18	40°01'10.684"N	104°40'19.933"W	0.00	
14320.50†	89.840	359.914	7147.92	6243.03	6123.37	1290.03	40°01'11.673"N	104°40'19.935"W	0.00	
14420.50†	89.840	359.914	7148.20	6342.04	6223.37	1289.88	40°01'12.661"N	104°40'19.937"W	0.00	

**BAKER  
HUGHES**  
a GE company



HOLE & CASING SECTIONS - Ref Wellbore: BUFORD 33-7-1L PWB      Ref Wellpath: BUFORD 33-7-1L (REV-A.0) PWP									
String/Diameter	Start MD [ft]	End MD [ft]	Interval [ft]	Start TVD [ft]	End TVD [ft]	Start N/S [ft]	Start E/W [ft]	End N/S [ft]	End E/W [ft]
13.5in Open Hole	20.50	1500.00	1479.50	20.50	1500.00	0.00	0.00	0.00	0.00
9.625in Casing Surface	20.50	1500.00	1479.50	20.50	1500.00	0.00	0.00	0.00	0.00
8.5in Open Hole	1500.00	17388.15	15888.15	1500.00	7156.50	0.00	0.00	9191.01	1285.42

TARGETS									
Name	MD [ft]	TVD [ft]	North [ft]	East [ft]	Grid East [US ft]	Grid North [US ft]	Latitude	Longitude	Shape
SEC.28-T01N-R65W		1.50	51.00	-148.48	3230456.90	1245096.09	40°00'11.664"N	104°40'38.424"W	polygon
SEC.33-T01N-R65W		1.50	51.00	-148.48	3230456.90	1245096.09	40°00'11.664"N	104°40'38.424"W	polygon
1) BUFORD 33-7-1L LP REV-1 (470'FSL & 1746'FWL,SEC.33)	7734.48	7129.50	-462.61	1299.92	3231909.95	1244595.96	40°00'06.588"N	104°40'19.812"W	point
2) BUFORD 33-7-1L BHL REV-1 (470'FNL & 1746'FWL,SEC.28)	17388.15	7156.50	9191.01	1285.42	3231805.84	1254248.69	40°01'41.988"N	104°40'19.992"W	point

SURVEY PROGRAM - Ref Wellbore: BUFORD 33-7-1L PWB      Ref Wellpath: BUFORD 33-7-1L (REV-A.0) PWP				
Start MD [ft]	End MD [ft]	Positional Uncertainty Model	Log Name/Comment	Wellbore
20.50	1500.00	BHI NaviTrak (Rotating+Axial Corr)		BUFORD 33-7-1L PWB
1500.00	17388.15	BHI AutoTrak Curve (Short)		BUFORD 33-7-1L PWB

# Planned Wellpath Report

BUFORD 33-7-1L (REV-A.0) PWP

Page 8 of 8



## REFERENCE WELLPATH IDENTIFICATION

Operator	CONFLUENCE RESOURCES	Slot	SLOT#09 BUFORD 33-7-1L (935'FSL & 450'FWL,SEC.33)
Area	COLORADO	Well	BUFORD 33-7-1L
Field	WELD COUNTY (NAD83, TRUE NORTH)	Wellbore	BUFORD 33-7-1L PWB
Facility	SEC.33-T01N-R65W		

## DESIGN COMMENTS

MD [ft]	Inclination [°]	Azimuth [°]	TVD [ft]	Comment
20.50	0.000	132.299	20.50	Tie On
1750.00	0.000	132.299	1750.00	End of Tangent
2741.70	19.834	132.299	2722.01	End of Build
6703.81	19.834	132.299	6449.09	End of Tangent
7734.48	89.840	359.914	7129.50	End of 3D Arc
17388.15	89.840	359.914	7156.50	End of Tangent