

CONFLUENCE RESOURCES

Location: COLORADO Slot: SLOT#08 BUFORD 33-8-4L (910'FSL & 450'FWL,SEC.33)
Field: WELD COUNTY (NAD83, TRUE NORTH) Well: BUFORD 33-8-4L
Facility: SEC.33-T01N-R65W Wellbore: BUFORD 33-8-4L PWB

Plot reference wellpath is BUFORD 33-8-4L (REV-A.0) PWP	Grid System: NAD83 / Lambert Colorado SP, Northern Zone (501), US feet
True vertical depths are referenced to RIG (20.5) (RKB)	North Reference: True north
Measured depths are referenced to RIG (20.5) (RKB)	Scale: True distance
RIG (20.5) (RKB) to Mean Sea Level: 5101.5 feet	Depths are in feet
Mean Sea Level to Mud line (At Slot: SLOT#08 BUFORD 33-8-4L (910'FSL & 450'FWL,SEC.33)): 0 feet	Created by: robale01 on 2019-10-09
Coordinates are in feet referenced to Slot	Database: WADENVER

Location Information

Facility Name				Grid East (US ft)	Grid North (US ft)	Latitude	Longitude
SEC.33-T01N-R65W				3230456.897	1245096.090	40°00'11.664"N	104°40'38.424"W
Slot	Local N (ft)	Local E (ft)	Grid East (US ft)	Grid North (US ft)	Latitude	Longitude	
SLOT#08 BUFORD 33-8-4L (910'FSL & 450'FWL,SEC.33)	-76.50	148.48	3230606.076	1245020.973	40°00'10.908"N	104°40'36.516"W	
RIG (20.5) (RKB) to Mud line (At Slot: SLOT#08 BUFORD 33-8-4L (910'FSL & 450'FWL,SEC.33))						5101.5ft	
Mean Sea Level to Mud line (At Slot: SLOT#08 BUFORD 33-8-4L (910'FSL & 450'FWL,SEC.33))						0ft	
RIG (20.5) (RKB) to Mean Sea Level						5101.5ft	

Targets

Name	MD (ft)	TVD (ft)	Local N (ft)	Local E (ft)	Grid East (US ft)	Grid North (US ft)	Latitude	Longitude
SEC.28-T01N-R65W		1.50	76.50	-148.48	3230456.90	1245096.09	40°00'11.664"N	104°40'38.424"W
SEC.33-T01N-R65W		1.50	76.50	-148.48	3230456.90	1245096.09	40°00'11.664"N	104°40'38.424"W
BUFORD 33-8-4L LP REV-1 (470'FSL & 1581'FWL,SEC.33)	8040.40	7493.50	-437.12	1134.63	3231744.68	1244594.42	40°00'06.588"N	104°40'21.936"W
BUFORD 33-8-4L BHL REV-1 (470'FSL & 1581'FWL,SEC.28)	17694.04	7502.50	9216.50	1120.19	3231640.62	1254247.14	40°01'41.988"N	104°40'22.116"W

Survey Program

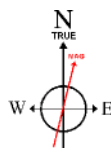
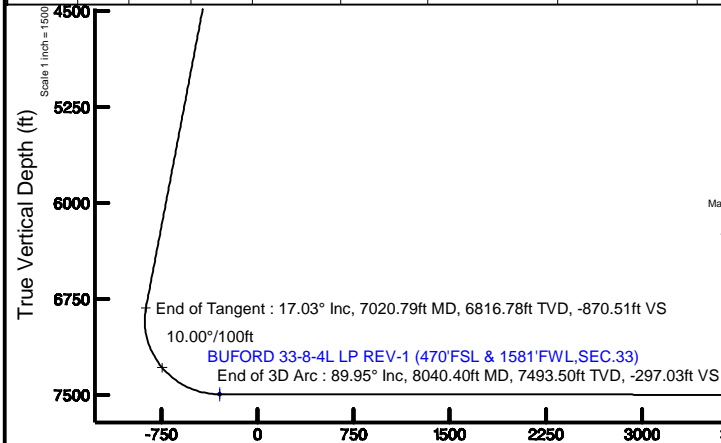
Start MD (ft)	End MD (ft)	Tool	Model	Log Name/Comment	Wellbore
20.50	1500.00	BHI NavTrak	BHI NavTrak (Rotating+Axial Corr)		BUFORD 33-8-4L PWB
1500.00	17694.04	BHI AutoTrak Curve	BHI AutoTrak Curve (Short)		BUFORD 33-8-4L PWB

Well Profile Data

Design Comment	MD (ft)	Inc (°)	Az (°)	TVD (ft)	Local N (ft)	Local E (ft)	DLS (°/100ft)	VS (ft)
Tie On	20.50	0.000	135.213	20.50	0.00	0.00	0.00	0.00
End of Tangent	1800.00	0.000	135.213	1800.00	0.00	0.00	0.00	0.00
End of Build	2651.37	17.027	135.213	2638.89	-89.13	88.47	2.00	-77.80
End of Tangent	7020.79	17.027	135.213	6816.78	-997.22	989.83	0.00	-870.51
End of 3D Arc	8040.40	89.947	359.914	7493.50	-437.12	1134.63	10.00	-297.03
End of Tangent	17694.04	89.947	359.914	7502.50	9216.50	1120.19	0.00	9284.32

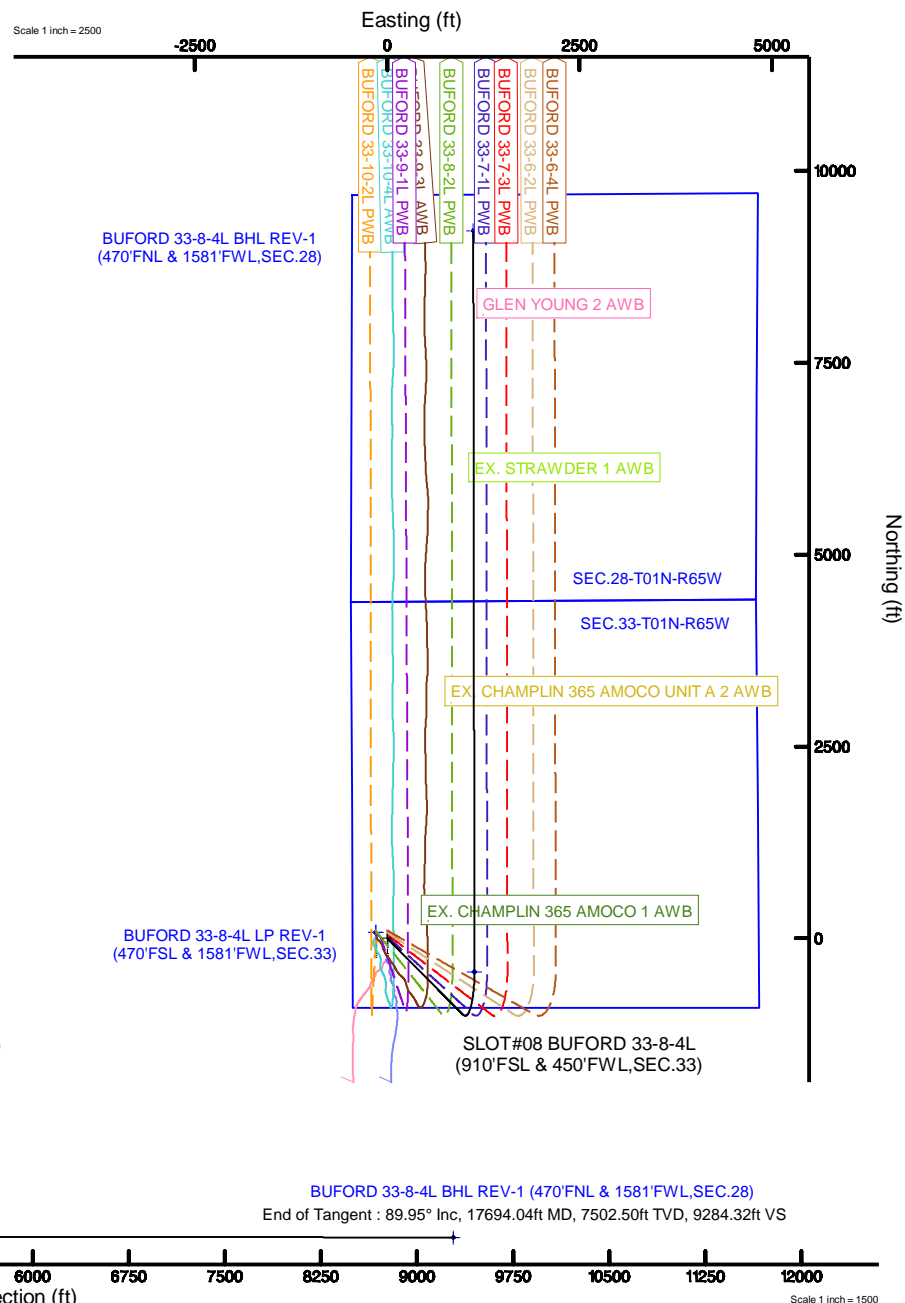
Bottom Hole Location

MD (ft)	Inc (°)	Az (°)	TVD (ft)	Local N (ft)	Local E (ft)	Grid East (US ft)	Grid North (US ft)	Latitude	Longitude
17694.04	89.947	359.914	7502.50	9216.50	1120.19	3231640.62	1254247.14	40°01'41.988"N	104°40'22.116"W



BGGM (1900.0 to 2020.0) Dip: 66.47° Field: 51959.1 nT
Magnetic North is 8.08 degrees East of True North (at 10/3/2019)
To correct azimuth from Magnetic to True add 8.08 degrees

Vertical Section (ft)
Azimuth 6.93° with reference 0.00 N, 0.00 E



Planned Wellpath Report

BUFORD 33-8-4L (REV-A.0) PWP

Page 1 of 10

REFERENCE WELLPATH IDENTIFICATION

Operator	CONFLUENCE RESOURCES	Slot	SLOT#08 BUFORD 33-8-4L (910'FSL & 450'FWL,SEC.33)
Area	COLORADO	Well	BUFORD 33-8-4L
Field	WELD COUNTY (NAD83, TRUE NORTH)	Wellbore	BUFORD 33-8-4L PWB
Facility	SEC.33-T01N-R65W		

REPORT SETUP INFORMATION

Projection System	NAD83 / Lambert Colorado SP, Northern Zone (501), US feet	Software System	WellArchitect® 5.1
North Reference	True	User	Robiale01
Scale	0.999966	Report Generated	10/9/2019 at 4:06:20 PM
Convergence at slot	0.53° East	Database/Source file	WA DENVER/BUFORD_33-8-4L__REV-A.0__PWP.xml

WELLPATH LOCATION

	Local coordinates		Grid coordinates		Geographic coordinates	
	North[ft]	East[ft]	Easting[US ft]	Northing[US ft]	Latitude	Longitude
Slot Location	-76.50	148.48	3230606.08	1245020.97	40°00'10.908"N	104°40'36.516"W
Facility Reference Pt			3230456.90	1245096.09	40°00'11.664"N	104°40'38.424"W
Field Reference Pt			3230456.90	1245096.09	40°00'11.664"N	104°40'38.424"W

WELLPATH DATUM

Calculation method	Minimum curvature	RIG (20.5') (RKB) to Facility Vertical Datum	5101.50ft
Horizontal Reference Pt	Slot	RIG (20.5') (RKB) to Mean Sea Level	5101.50ft
Vertical Reference Pt	RIG (20.5') (RKB)	RIG (20.5') (RKB) to Mud Line at Slot (SLOT#08 BUFORD 33-8-4L (910'FSL & 450'FWL,SEC.33))	5101.50ft
MD Reference Pt	RIG (20.5') (RKB)	Section Origin	N 0.00, E 0.00 ft
Field Vertical Reference	Mean Sea Level	Section Azimuth	6.93°

Planned Wellpath Report

BUFORD 33-8-4L (REV-A.0) PWP

Page 2 of 10



REFERENCE WELLPATH IDENTIFICATION

Operator	CONFLUENCE RESOURCES	Slot	SLOT#08 BUFORD 33-8-4L (910'FSL & 450'FWL,SEC.33)
Area	COLORADO	Well	BUFORD 33-8-4L
Field	WELD COUNTY (NAD83, TRUE NORTH)	Wellbore	BUFORD 33-8-4L PWB
Facility	SEC.33-T01N-R65W		

WELLPATH DATA (183 stations) † = interpolated/extrapolated station

MD [ft]	Inclination [°]	Azimuth [°]	TVD [ft]	Vert Sect [ft]	North [ft]	East [ft]	Latitude	Longitude	DLS [°/100ft]	Comments
0.00†	0.000	135.213	0.00	0.00	0.00	0.00	40°00'10.908"N	104°40'36.516"W	0.00	
20.50	0.000	135.213	20.50	0.00	0.00	0.00	40°00'10.908"N	104°40'36.516"W	0.00	Tie On
120.50†	0.000	135.213	120.50	0.00	0.00	0.00	40°00'10.908"N	104°40'36.516"W	0.00	
220.50†	0.000	135.213	220.50	0.00	0.00	0.00	40°00'10.908"N	104°40'36.516"W	0.00	
320.50†	0.000	135.213	320.50	0.00	0.00	0.00	40°00'10.908"N	104°40'36.516"W	0.00	
420.50†	0.000	135.213	420.50	0.00	0.00	0.00	40°00'10.908"N	104°40'36.516"W	0.00	
520.50†	0.000	135.213	520.50	0.00	0.00	0.00	40°00'10.908"N	104°40'36.516"W	0.00	
620.50†	0.000	135.213	620.50	0.00	0.00	0.00	40°00'10.908"N	104°40'36.516"W	0.00	
720.50†	0.000	135.213	720.50	0.00	0.00	0.00	40°00'10.908"N	104°40'36.516"W	0.00	
820.50†	0.000	135.213	820.50	0.00	0.00	0.00	40°00'10.908"N	104°40'36.516"W	0.00	
920.50†	0.000	135.213	920.50	0.00	0.00	0.00	40°00'10.908"N	104°40'36.516"W	0.00	
1020.50†	0.000	135.213	1020.50	0.00	0.00	0.00	40°00'10.908"N	104°40'36.516"W	0.00	
1120.50†	0.000	135.213	1120.50	0.00	0.00	0.00	40°00'10.908"N	104°40'36.516"W	0.00	
1220.50†	0.000	135.213	1220.50	0.00	0.00	0.00	40°00'10.908"N	104°40'36.516"W	0.00	
1320.50†	0.000	135.213	1320.50	0.00	0.00	0.00	40°00'10.908"N	104°40'36.516"W	0.00	
1420.50†	0.000	135.213	1420.50	0.00	0.00	0.00	40°00'10.908"N	104°40'36.516"W	0.00	
1520.50†	0.000	135.213	1520.50	0.00	0.00	0.00	40°00'10.908"N	104°40'36.516"W	0.00	
1620.50†	0.000	135.213	1620.50	0.00	0.00	0.00	40°00'10.908"N	104°40'36.516"W	0.00	
1720.50†	0.000	135.213	1720.50	0.00	0.00	0.00	40°00'10.908"N	104°40'36.516"W	0.00	
1800.00	0.000	135.213	1800.00	0.00	0.00	0.00	40°00'10.908"N	104°40'36.516"W	0.00	End of Tangent
1820.50†	0.410	135.213	1820.50	-0.05	-0.05	0.05	40°00'10.907"N	104°40'36.515"W	2.00	
1920.50†	2.410	135.213	1920.46	-1.57	-1.80	1.79	40°00'10.890"N	104°40'36.493"W	2.00	
2020.50†	4.410	135.213	2020.28	-5.25	-6.02	5.98	40°00'10.849"N	104°40'36.439"W	2.00	
2120.50†	6.410	135.213	2119.83	-11.10	-12.71	12.62	40°00'10.782"N	104°40'36.354"W	2.00	
2220.50†	8.410	135.213	2218.99	-19.09	-21.86	21.70	40°00'10.692"N	104°40'36.237"W	2.00	
2320.50†	10.410	135.213	2317.64	-29.21	-33.47	33.22	40°00'10.577"N	104°40'36.089"W	2.00	
2420.50†	12.410	135.213	2415.66	-41.47	-47.51	47.15	40°00'10.439"N	104°40'35.910"W	2.00	
2520.50†	14.410	135.213	2512.93	-55.84	-63.97	63.49	40°00'10.276"N	104°40'35.700"W	2.00	
2620.50†	16.410	135.213	2609.33	-72.30	-82.82	82.21	40°00'10.090"N	104°40'35.460"W	2.00	
2651.37	17.027	135.213	2638.89	-77.80	-89.13	88.47	40°00'10.027"N	104°40'35.379"W	2.00	End of Build

Planned Wellpath Report

BUFORD 33-8-4L (REV-A.0) PWP

Page 3 of 10

REFERENCE WELLPATH IDENTIFICATION

Operator	CONFLUENCE RESOURCES	Slot	SLOT#08 BUFORD 33-8-4L (910'FSL & 450'FWL,SEC.33)
Area	COLORADO	Well	BUFORD 33-8-4L
Field	WELD COUNTY (NAD83, TRUE NORTH)	Wellbore	BUFORD 33-8-4L PWB
Facility	SEC.33-T01N-R65W		

WELLPATH DATA (183 stations) † = interpolated/extrapolated station

MD [ft]	Inclination [°]	Azimuth [°]	TVD [ft]	Vert Sect [ft]	North [ft]	East [ft]	Latitude	Longitude	DLS [°/100ft]	Comments
2720.50†	17.027	135.213	2704.99	-90.34	-103.49	102.73	40°00'09.885"N	104°40'35.196"W	0.00	
2820.50†	17.027	135.213	2800.61	-108.49	-124.28	123.36	40°00'09.680"N	104°40'34.931"W	0.00	
2920.50†	17.027	135.213	2896.23	-126.63	-145.06	143.99	40°00'09.474"N	104°40'34.666"W	0.00	
3020.50†	17.027	135.213	2991.84	-144.77	-165.84	164.61	40°00'09.269"N	104°40'34.401"W	0.00	
3120.50†	17.027	135.213	3087.46	-162.91	-186.63	185.24	40°00'09.064"N	104°40'34.136"W	0.00	
3220.50†	17.027	135.213	3183.08	-181.05	-207.41	205.87	40°00'08.858"N	104°40'33.871"W	0.00	
3320.50†	17.027	135.213	3278.69	-199.20	-228.19	226.50	40°00'08.653"N	104°40'33.605"W	0.00	
3420.50†	17.027	135.213	3374.31	-217.34	-248.98	247.13	40°00'08.448"N	104°40'33.340"W	0.00	
3520.50†	17.027	135.213	3469.92	-235.48	-269.76	267.76	40°00'08.242"N	104°40'33.075"W	0.00	
3620.50†	17.027	135.213	3565.54	-253.62	-290.54	288.39	40°00'08.037"N	104°40'32.810"W	0.00	
3720.50†	17.027	135.213	3661.16	-271.77	-311.32	309.02	40°00'07.831"N	104°40'32.545"W	0.00	
3820.50†	17.027	135.213	3756.77	-289.91	-332.11	329.65	40°00'07.626"N	104°40'32.280"W	0.00	
3920.50†	17.027	135.213	3852.39	-308.05	-352.89	350.27	40°00'07.421"N	104°40'32.015"W	0.00	
4020.50†	17.027	135.213	3948.01	-326.19	-373.67	370.90	40°00'07.215"N	104°40'31.750"W	0.00	
4120.50†	17.027	135.213	4043.62	-344.33	-394.46	391.53	40°00'07.010"N	104°40'31.485"W	0.00	
4220.50†	17.027	135.213	4139.24	-362.48	-415.24	412.16	40°00'06.804"N	104°40'31.220"W	0.00	
4320.50†	17.027	135.213	4234.86	-380.62	-436.02	432.79	40°00'06.599"N	104°40'30.955"W	0.00	
4420.50†	17.027	135.213	4330.47	-398.76	-456.80	453.42	40°00'06.394"N	104°40'30.690"W	0.00	
4520.50†	17.027	135.213	4426.09	-416.90	-477.59	474.05	40°00'06.188"N	104°40'30.424"W	0.00	
4620.50†	17.027	135.213	4521.71	-435.05	-498.37	494.68	40°00'05.983"N	104°40'30.159"W	0.00	
4720.50†	17.027	135.213	4617.32	-453.19	-519.15	515.31	40°00'05.778"N	104°40'29.894"W	0.00	
4820.50†	17.027	135.213	4712.94	-471.33	-539.94	535.94	40°00'05.572"N	104°40'29.629"W	0.00	
4920.50†	17.027	135.213	4808.56	-489.47	-560.72	556.56	40°00'05.367"N	104°40'29.364"W	0.00	
5020.50†	17.027	135.213	4904.17	-507.61	-581.50	577.19	40°00'05.161"N	104°40'29.099"W	0.00	
5120.50†	17.027	135.213	4999.79	-525.76	-602.29	597.82	40°00'04.956"N	104°40'28.834"W	0.00	
5220.50†	17.027	135.213	5095.41	-543.90	-623.07	618.45	40°00'04.751"N	104°40'28.569"W	0.00	
5320.50†	17.027	135.213	5191.02	-562.04	-643.85	639.08	40°00'04.545"N	104°40'28.304"W	0.00	
5420.50†	17.027	135.213	5286.64	-580.18	-664.63	659.71	40°00'04.340"N	104°40'28.039"W	0.00	
5520.50†	17.027	135.213	5382.25	-598.33	-685.42	680.34	40°00'04.134"N	104°40'27.774"W	0.00	
5620.50†	17.027	135.213	5477.87	-616.47	-706.20	700.97	40°00'03.929"N	104°40'27.509"W	0.00	

Planned Wellpath Report

BUFORD 33-8-4L (REV-A.0) PWP

Page 4 of 10

REFERENCE WELLPATH IDENTIFICATION

Operator	CONFLUENCE RESOURCES	Slot	SLOT#08 BUFORD 33-8-4L (910'FSL & 450'FWL,SEC.33)
Area	COLORADO	Well	BUFORD 33-8-4L
Field	WELD COUNTY (NAD83, TRUE NORTH)	Wellbore	BUFORD 33-8-4L PWB
Facility	SEC.33-T01N-R65W		

WELLPATH DATA (183 stations) † = interpolated/extrapolated station

MD [ft]	Inclination [°]	Azimuth [°]	TVD [ft]	Vert Sect [ft]	North [ft]	East [ft]	Latitude	Longitude	DLS [°/100ft]	Comments
5720.50†	17.027	135.213	5573.49	-634.61	-726.98	721.60	40°00'03.724"N	104°40'27.244"W	0.00	
5820.50†	17.027	135.213	5669.10	-652.75	-747.77	742.22	40°00'03.518"N	104°40'26.979"W	0.00	
5920.50†	17.027	135.213	5764.72	-670.89	-768.55	762.85	40°00'03.313"N	104°40'26.713"W	0.00	
6020.50†	17.027	135.213	5860.34	-689.04	-789.33	783.48	40°00'03.107"N	104°40'26.448"W	0.00	
6120.50†	17.027	135.213	5955.95	-707.18	-810.12	804.11	40°00'02.902"N	104°40'26.183"W	0.00	
6220.50†	17.027	135.213	6051.57	-725.32	-830.90	824.74	40°00'02.697"N	104°40'25.918"W	0.00	
6320.50†	17.027	135.213	6147.19	-743.46	-851.68	845.37	40°00'02.491"N	104°40'25.653"W	0.00	
6420.50†	17.027	135.213	6242.80	-761.60	-872.46	866.00	40°00'02.286"N	104°40'25.388"W	0.00	
6520.50†	17.027	135.213	6338.42	-779.75	-893.25	886.63	40°00'02.080"N	104°40'25.123"W	0.00	
6620.50†	17.027	135.213	6434.04	-797.89	-914.03	907.26	40°00'01.875"N	104°40'24.858"W	0.00	
6720.50†	17.027	135.213	6529.65	-816.03	-934.81	927.89	40°00'01.670"N	104°40'24.593"W	0.00	
6820.50†	17.027	135.213	6625.27	-834.17	-955.60	948.51	40°00'01.464"N	104°40'24.328"W	0.00	
6920.50†	17.027	135.213	6720.89	-852.32	-976.38	969.14	40°00'01.259"N	104°40'24.063"W	0.00	
7020.50†	17.027	135.213	6816.50	-870.46	-997.16	989.77	40°00'01.054"N	104°40'23.798"W	0.00	
7020.79	17.027	135.213	6816.78	-870.51	-997.22	989.83	40°00'01.053"N	104°40'23.797"W	0.00	End of Tangent
7120.50†	12.323	99.528	6913.40	-880.06	-1009.38	1010.66	40°00'00.933"N	104°40'23.529"W	10.00	
7220.50†	14.494	56.331	7010.90	-872.38	-1004.19	1031.65	40°00'00.984"N	104°40'23.260"W	10.00	
7320.50†	21.569	32.916	7106.05	-847.65	-981.77	1052.11	40°00'01.206"N	104°40'22.997"W	10.00	
7420.50†	30.286	21.543	7195.96	-806.63	-942.78	1071.41	40°00'01.591"N	104°40'22.749"W	10.00	
7520.50†	39.573	15.008	7277.88	-750.55	-888.42	1088.96	40°00'02.128"N	104°40'22.523"W	10.00	
7620.50†	49.103	10.654	7349.34	-681.12	-820.34	1104.23	40°00'02.801"N	104°40'22.327"W	10.00	
7720.50†	58.756	7.411	7408.16	-600.45	-740.61	1116.77	40°00'03.589"N	104°40'22.166"W	10.00	
7820.50†	68.474	4.776	7452.55	-511.00	-651.64	1126.18	40°00'04.468"N	104°40'22.045"W	10.00	
7920.50†	78.229	2.475	7481.17	-415.48	-556.14	1132.18	40°00'05.412"N	104°40'21.968"W	10.00	
8020.50†	88.001	0.334	7493.14	-316.79	-457.02	1134.59	40°00'06.391"N	104°40'21.937"W	10.00	
8040.40	89.947	359.914	7493.50 [†]	-297.03	-437.12	1134.63	40°00'06.588"N	104°40'21.936"W	10.00	End of 3D Arc
8120.50†	89.947	359.914	7493.57	-217.53	-357.02	1134.51	40°00'07.380"N	104°40'21.937"W	0.00	
8220.50†	89.947	359.914	7493.67	-118.28	-257.02	1134.36	40°00'08.368"N	104°40'21.939"W	0.00	
8320.50†	89.947	359.914	7493.76	-19.03	-157.02	1134.21	40°00'09.356"N	104°40'21.941"W	0.00	
8420.50†	89.947	359.914	7493.85	80.22	-57.02	1134.06	40°00'10.344"N	104°40'21.943"W	0.00	

Planned Wellpath Report

BUFORD 33-8-4L (REV-A.0) PWP

Page 5 of 10

REFERENCE WELLPATH IDENTIFICATION

Operator	CONFLUENCE RESOURCES	Slot	SLOT#08 BUFORD 33-8-4L (910'FSL & 450'FWL,SEC.33)
Area	COLORADO	Well	BUFORD 33-8-4L
Field	WELD COUNTY (NAD83, TRUE NORTH)	Wellbore	BUFORD 33-8-4L PWB
Facility	SEC.33-T01N-R65W		

WELLPATH DATA (183 stations) † = interpolated/extrapolated station

MD [ft]	Inclination [°]	Azimuth [°]	TVD [ft]	Vert Sect [ft]	North [ft]	East [ft]	Latitude	Longitude	DLS [°/100ft]	Comments
8520.50†	89.947	359.914	7493.95	179.47	42.98	1133.91	40°00'11.332"N	104°40'21.945"W	0.00	
8620.50†	89.947	359.914	7494.04	278.73	142.98	1133.76	40°00'12.321"N	104°40'21.947"W	0.00	
8720.50†	89.947	359.914	7494.13	377.98	242.98	1133.61	40°00'13.309"N	104°40'21.949"W	0.00	
8820.50†	89.947	359.914	7494.23	477.23	342.98	1133.47	40°00'14.297"N	104°40'21.951"W	0.00	
8920.50†	89.947	359.914	7494.32	576.48	442.98	1133.32	40°00'15.285"N	104°40'21.952"W	0.00	
9020.50†	89.947	359.914	7494.41	675.73	542.98	1133.17	40°00'16.274"N	104°40'21.954"W	0.00	
9120.50†	89.947	359.914	7494.51	774.98	642.98	1133.02	40°00'17.262"N	104°40'21.956"W	0.00	
9220.50†	89.947	359.914	7494.60	874.23	742.98	1132.87	40°00'18.250"N	104°40'21.958"W	0.00	
9320.50†	89.947	359.914	7494.69	973.48	842.98	1132.72	40°00'19.238"N	104°40'21.960"W	0.00	
9420.50†	89.947	359.914	7494.79	1072.74	942.98	1132.57	40°00'20.227"N	104°40'21.962"W	0.00	
9520.50†	89.947	359.914	7494.88	1171.99	1042.98	1132.42	40°00'21.215"N	104°40'21.964"W	0.00	
9620.50†	89.947	359.914	7494.97	1271.24	1142.98	1132.27	40°00'22.203"N	104°40'21.965"W	0.00	
9720.50†	89.947	359.914	7495.07	1370.49	1242.98	1132.12	40°00'23.191"N	104°40'21.967"W	0.00	
9820.50†	89.947	359.914	7495.16	1469.74	1342.98	1131.97	40°00'24.179"N	104°40'21.969"W	0.00	
9920.50†	89.947	359.914	7495.25	1568.99	1442.98	1131.82	40°00'25.168"N	104°40'21.971"W	0.00	
10020.50†	89.947	359.914	7495.35	1668.24	1542.98	1131.67	40°00'26.156"N	104°40'21.973"W	0.00	
10120.50†	89.947	359.914	7495.44	1767.49	1642.98	1131.52	40°00'27.144"N	104°40'21.975"W	0.00	
10220.50†	89.947	359.914	7495.53	1866.75	1742.97	1131.37	40°00'28.132"N	104°40'21.977"W	0.00	
10320.50†	89.947	359.914	7495.63	1966.00	1842.97	1131.22	40°00'29.121"N	104°40'21.979"W	0.00	
10420.50†	89.947	359.914	7495.72	2065.25	1942.97	1131.07	40°00'30.109"N	104°40'21.980"W	0.00	
10520.50†	89.947	359.914	7495.81	2164.50	2042.97	1130.92	40°00'31.097"N	104°40'21.982"W	0.00	
10620.50†	89.947	359.914	7495.91	2263.75	2142.97	1130.77	40°00'32.085"N	104°40'21.984"W	0.00	
10720.50†	89.947	359.914	7496.00	2363.00	2242.97	1130.62	40°00'33.074"N	104°40'21.986"W	0.00	
10820.50†	89.947	359.914	7496.09	2462.25	2342.97	1130.47	40°00'34.062"N	104°40'21.988"W	0.00	
10920.50†	89.947	359.914	7496.19	2561.50	2442.97	1130.32	40°00'35.050"N	104°40'21.990"W	0.00	
11020.50†	89.947	359.914	7496.28	2660.76	2542.97	1130.17	40°00'36.038"N	104°40'21.992"W	0.00	
11120.50†	89.947	359.914	7496.37	2760.01	2642.97	1130.02	40°00'37.026"N	104°40'21.993"W	0.00	
11220.50†	89.947	359.914	7496.46	2859.26	2742.97	1129.87	40°00'38.015"N	104°40'21.995"W	0.00	
11320.50†	89.947	359.914	7496.56	2958.51	2842.97	1129.72	40°00'39.003"N	104°40'21.997"W	0.00	
11420.50†	89.947	359.914	7496.65	3057.76	2942.97	1129.58	40°00'39.991"N	104°40'21.999"W	0.00	

Planned Wellpath Report

BUFORD 33-8-4L (REV-A.0) PWP

Page 6 of 10

REFERENCE WELLPATH IDENTIFICATION

Operator	CONFLUENCE RESOURCES	Slot	SLOT#08 BUFORD 33-8-4L (910'FSL & 450'FWL,SEC.33)
Area	COLORADO	Well	BUFORD 33-8-4L
Field	WELD COUNTY (NAD83, TRUE NORTH)	Wellbore	BUFORD 33-8-4L PWB
Facility	SEC.33-T01N-R65W		

WELLPATH DATA (183 stations) † = interpolated/extrapolated station

MD [ft]	Inclination [°]	Azimuth [°]	TVD [ft]	Vert Sect [ft]	North [ft]	East [ft]	Latitude	Longitude	DLS [°/100ft]	Comments
11520.50†	89.947	359.914	7496.74	3157.01	3042.97	1129.43	40°00'40.979"N	104°40'22.001"W	0.00	
11620.50†	89.947	359.914	7496.84	3256.26	3142.97	1129.28	40°00'41.968"N	104°40'22.003"W	0.00	
11720.50†	89.947	359.914	7496.93	3355.51	3242.97	1129.13	40°00'42.956"N	104°40'22.005"W	0.00	
11820.50†	89.947	359.914	7497.02	3454.77	3342.97	1128.98	40°00'43.944"N	104°40'22.006"W	0.00	
11920.50†	89.947	359.914	7497.12	3554.02	3442.97	1128.83	40°00'44.932"N	104°40'22.008"W	0.00	
12020.50†	89.947	359.914	7497.21	3653.27	3542.97	1128.68	40°00'45.921"N	104°40'22.010"W	0.00	
12120.50†	89.947	359.914	7497.30	3752.52	3642.97	1128.53	40°00'46.909"N	104°40'22.012"W	0.00	
12220.50†	89.947	359.914	7497.40	3851.77	3742.97	1128.38	40°00'47.897"N	104°40'22.014"W	0.00	
12320.50†	89.947	359.914	7497.49	3951.02	3842.97	1128.23	40°00'48.885"N	104°40'22.016"W	0.00	
12420.50†	89.947	359.914	7497.58	4050.27	3942.97	1128.08	40°00'49.873"N	104°40'22.018"W	0.00	
12520.50†	89.947	359.914	7497.68	4149.52	4042.97	1127.93	40°00'50.862"N	104°40'22.020"W	0.00	
12620.50†	89.947	359.914	7497.77	4248.78	4142.97	1127.78	40°00'51.850"N	104°40'22.021"W	0.00	
12720.50†	89.947	359.914	7497.86	4348.03	4242.97	1127.63	40°00'52.838"N	104°40'22.023"W	0.00	
12820.50†	89.947	359.914	7497.96	4447.28	4342.97	1127.48	40°00'53.826"N	104°40'22.025"W	0.00	
12920.50†	89.947	359.914	7498.05	4546.53	4442.97	1127.33	40°00'54.815"N	104°40'22.027"W	0.00	
13020.50†	89.947	359.914	7498.14	4645.78	4542.97	1127.18	40°00'55.803"N	104°40'22.029"W	0.00	
13120.50†	89.947	359.914	7498.24	4745.03	4642.97	1127.03	40°00'56.791"N	104°40'22.031"W	0.00	
13220.50†	89.947	359.914	7498.33	4844.28	4742.97	1126.88	40°00'57.779"N	104°40'22.033"W	0.00	
13320.50†	89.947	359.914	7498.42	4943.54	4842.97	1126.73	40°00'58.767"N	104°40'22.034"W	0.00	
13420.50†	89.947	359.914	7498.52	5042.79	4942.97	1126.58	40°00'59.756"N	104°40'22.036"W	0.00	
13520.50†	89.947	359.914	7498.61	5142.04	5042.97	1126.43	40°01'00.744"N	104°40'22.038"W	0.00	
13620.50†	89.947	359.914	7498.70	5241.29	5142.97	1126.28	40°01'01.732"N	104°40'22.040"W	0.00	
13720.50†	89.947	359.914	7498.80	5340.54	5242.97	1126.13	40°01'02.720"N	104°40'22.042"W	0.00	
13820.50†	89.947	359.914	7498.89	5439.79	5342.97	1125.98	40°01'03.709"N	104°40'22.044"W	0.00	
13920.50†	89.947	359.914	7498.98	5539.04	5442.97	1125.83	40°01'04.697"N	104°40'22.046"W	0.00	
14020.50†	89.947	359.914	7499.08	5638.29	5542.97	1125.69	40°01'05.685"N	104°40'22.047"W	0.00	
14120.50†	89.947	359.914	7499.17	5737.55	5642.97	1125.54	40°01'06.673"N	104°40'22.049"W	0.00	
14220.50†	89.947	359.914	7499.26	5836.80	5742.97	1125.39	40°01'07.662"N	104°40'22.051"W	0.00	
14320.50†	89.947	359.914	7499.35	5936.05	5842.97	1125.24	40°01'08.650"N	104°40'22.053"W	0.00	
14420.50†	89.947	359.914	7499.45	6035.30	5942.97	1125.09	40°01'09.638"N	104°40'22.055"W	0.00	

Planned Wellpath Report

BUFORD 33-8-4L (REV-A.0) PWP

Page 7 of 10

REFERENCE WELLPATH IDENTIFICATION

Operator	CONFLUENCE RESOURCES	Slot	SLOT#08 BUFORD 33-8-4L (910'FSL & 450'FWL,SEC.33)
Area	COLORADO	Well	BUFORD 33-8-4L
Field	WELD COUNTY (NAD83, TRUE NORTH)	Wellbore	BUFORD 33-8-4L PWB
Facility	SEC.33-T01N-R65W		

WELLPATH DATA (183 stations) † = interpolated/extrapolated station

MD [ft]	Inclination [°]	Azimuth [°]	TVD [ft]	Vert Sect [ft]	North [ft]	East [ft]	Latitude	Longitude	DLS [°/100ft]	Comments
14520.50†	89.947	359.914	7499.54	6134.55	6042.97	1124.94	40°01'10.626"N	104°40'22.057"W	0.00	
14620.50†	89.947	359.914	7499.63	6233.80	6142.97	1124.79	40°01'11.614"N	104°40'22.059"W	0.00	
14720.50†	89.947	359.914	7499.73	6333.05	6242.97	1124.64	40°01'12.603"N	104°40'22.061"W	0.00	
14820.50†	89.947	359.914	7499.82	6432.30	6342.97	1124.49	40°01'13.591"N	104°40'22.062"W	0.00	
14920.50†	89.947	359.914	7499.91	6531.56	6442.97	1124.34	40°01'14.579"N	104°40'22.064"W	0.00	
15020.50†	89.947	359.914	7500.01	6630.81	6542.97	1124.19	40°01'15.567"N	104°40'22.066"W	0.00	
15120.50†	89.947	359.914	7500.10	6730.06	6642.97	1124.04	40°01'16.556"N	104°40'22.068"W	0.00	
15220.50†	89.947	359.914	7500.19	6829.31	6742.97	1123.89	40°01'17.544"N	104°40'22.070"W	0.00	
15320.50†	89.947	359.914	7500.29	6928.56	6842.97	1123.74	40°01'18.532"N	104°40'22.072"W	0.00	
15420.50†	89.947	359.914	7500.38	7027.81	6942.97	1123.59	40°01'19.520"N	104°40'22.074"W	0.00	
15520.50†	89.947	359.914	7500.47	7127.06	7042.97	1123.44	40°01'20.509"N	104°40'22.075"W	0.00	
15620.50†	89.947	359.914	7500.57	7226.31	7142.97	1123.29	40°01'21.497"N	104°40'22.077"W	0.00	
15720.50†	89.947	359.914	7500.66	7325.57	7242.97	1123.14	40°01'22.485"N	104°40'22.079"W	0.00	
15820.50†	89.947	359.914	7500.75	7424.82	7342.97	1122.99	40°01'23.473"N	104°40'22.081"W	0.00	
15920.50†	89.947	359.914	7500.85	7524.07	7442.97	1122.84	40°01'24.461"N	104°40'22.083"W	0.00	
16020.50†	89.947	359.914	7500.94	7623.32	7542.97	1122.69	40°01'25.450"N	104°40'22.085"W	0.00	
16120.50†	89.947	359.914	7501.03	7722.57	7642.97	1122.54	40°01'26.438"N	104°40'22.087"W	0.00	
16220.50†	89.947	359.914	7501.13	7821.82	7742.97	1122.39	40°01'27.426"N	104°40'22.089"W	0.00	
16320.50†	89.947	359.914	7501.22	7921.07	7842.97	1122.24	40°01'28.414"N	104°40'22.090"W	0.00	
16420.50†	89.947	359.914	7501.31	8020.32	7942.97	1122.09	40°01'29.403"N	104°40'22.092"W	0.00	
16520.50†	89.947	359.914	7501.41	8119.58	8042.97	1121.94	40°01'30.391"N	104°40'22.094"W	0.00	
16620.50†	89.947	359.914	7501.50	8218.83	8142.96	1121.80	40°01'31.379"N	104°40'22.096"W	0.00	
16720.50†	89.947	359.914	7501.59	8318.08	8242.96	1121.65	40°01'32.367"N	104°40'22.098"W	0.00	
16820.50†	89.947	359.914	7501.69	8417.33	8342.96	1121.50	40°01'33.355"N	104°40'22.100"W	0.00	
16920.50†	89.947	359.914	7501.78	8516.58	8442.96	1121.35	40°01'34.344"N	104°40'22.102"W	0.00	
17020.50†	89.947	359.914	7501.87	8615.83	8542.96	1121.20	40°01'35.332"N	104°40'22.103"W	0.00	
17120.50†	89.947	359.914	7501.97	8715.08	8642.96	1121.05	40°01'36.320"N	104°40'22.105"W	0.00	
17220.50†	89.947	359.914	7502.06	8814.33	8742.96	1120.90	40°01'37.308"N	104°40'22.107"W	0.00	
17320.50†	89.947	359.914	7502.15	8913.59	8842.96	1120.75	40°01'38.297"N	104°40'22.109"W	0.00	
17420.50†	89.947	359.914	7502.24	9012.84	8942.96	1120.60	40°01'39.285"N	104°40'22.111"W	0.00	

Planned Wellpath Report

BUFORD 33-8-4L (REV-A.0) PWP

Page 8 of 10

REFERENCE WELLPATH IDENTIFICATION

Operator	CONFLUENCE RESOURCES	Slot	SLOT#08 BUFORD 33-8-4L (910'FSL & 450'FWL,SEC.33)
Area	COLORADO	Well	BUFORD 33-8-4L
Field	WELD COUNTY (NAD83, TRUE NORTH)	Wellbore	BUFORD 33-8-4L PWB
Facility	SEC.33-T01N-R65W		

WELLPATH DATA (183 stations) † = interpolated/extrapolated station

MD [ft]	Inclination [°]	Azimuth [°]	TVD [ft]	Vert Sect [ft]	North [ft]	East [ft]	Latitude	Longitude	DLS [°/100ft]	Comments
17520.50†	89.947	359.914	7502.34	9112.09	9042.96	1120.45	40°01'40.273"N	104°40'22.113"W	0.00	
17620.50†	89.947	359.914	7502.43	9211.34	9142.96	1120.30	40°01'41.261"N	104°40'22.115"W	0.00	
17694.04	89.947	359.914	7502.50 ²	9284.32	9216.50	1120.19	40°01'41.988"N	104°40'22.116"W	0.00	End of Tangent

HOLE & CASING SECTIONS - Ref Wellbore: BUFORD 33-8-4L PWB Ref Wellpath: BUFORD 33-8-4L (REV-A.0) PWP

String/Diameter	Start MD [ft]	End MD [ft]	Interval [ft]	Start TVD [ft]	End TVD [ft]	Start N/S [ft]	Start E/W [ft]	End N/S [ft]	End E/W [ft]
13.5in Open Hole	20.50	1500.00	1479.50	20.50	1500.00	0.00	0.00	0.00	0.00
9.625in Casing Surface	20.50	1500.00	1479.50	20.50	1500.00	0.00	0.00	0.00	0.00
8.5in Open Hole	1500.00	17694.04	16194.04	1500.00	7502.50	0.00	0.00	9216.50	1120.19

TARGETS

Name	MD [ft]	TVD [ft]	North [ft]	East [ft]	Grid East [US ft]	Grid North [US ft]	Latitude	Longitude	Shape
SEC.28-T01N-R65W		1.50	76.50	-148.48	3230456.90	1245096.09	40°00'11.664"N	104°40'38.424"W	polygon
SEC.33-T01N-R65W		1.50	76.50	-148.48	3230456.90	1245096.09	40°00'11.664"N	104°40'38.424"W	polygon
1) BUFORD 33-8-4L LP REV-1 (470'FSL & 1581'FWL,SEC.33)	8040.40	7493.50	-437.12	1134.63	3231744.68	1244594.42	40°00'06.588"N	104°40'21.936"W	point
2) BUFORD 33-8-4L BHL REV-1 (470'FNL & 1581'FWL,SEC.28)	17694.04	7502.50	9216.50	1120.19	3231640.62	1254247.14	40°01'41.988"N	104°40'22.116"W	point

Planned Wellpath Report

BUFORD 33-8-4L (REV-A.0) PWP

Page 9 of 10



REFERENCE WELLPATH IDENTIFICATION			
Operator	CONFLUENCE RESOURCES	Slot	SLOT#08 BUFORD 33-8-4L (910'FSL & 450'FWL,SEC.33)
Area	COLORADO	Well	BUFORD 33-8-4L
Field	WELD COUNTY (NAD83, TRUE NORTH)	Wellbore	BUFORD 33-8-4L PWB
Facility	SEC.33-T01N-R65W		

SURVEY PROGRAM - Ref Wellbore: BUFORD 33-8-4L PWB Ref Wellpath: BUFORD 33-8-4L (REV-A.0) PWP				
Start MD [ft]	End MD [ft]	Positional Uncertainty Model	Log Name/Comment	Wellbore
20.50	1500.00	BHI NaviTrak (Rotating+Axial Corr)		BUFORD 33-8-4L PWB
1500.00	17694.04	BHI AutoTrak Curve (Short)		BUFORD 33-8-4L PWB

Planned Wellpath Report

BUFORD 33-8-4L (REV-A.0) PWP

Page 10 of 10

REFERENCE WELLPATH IDENTIFICATION

Operator	CONFLUENCE RESOURCES	Slot	SLOT#08 BUFORD 33-8-4L (910'FSL & 450'FWL,SEC.33)
Area	COLORADO	Well	BUFORD 33-8-4L
Field	WELD COUNTY (NAD83, TRUE NORTH)	Wellbore	BUFORD 33-8-4L PWB
Facility	SEC.33-T01N-R65W		

DESIGN COMMENTS

MD [ft]	Inclination [°]	Azimuth [°]	TVD [ft]	Comment
20.50	0.000	135.213	20.50	Tie On
1800.00	0.000	135.213	1800.00	End of Tangent
2651.37	17.027	135.213	2638.89	End of Build
7020.79	17.027	135.213	6816.78	End of Tangent
8040.40	89.947	359.914	7493.50	End of 3D Arc
17694.04	89.947	359.914	7502.50	End of Tangent