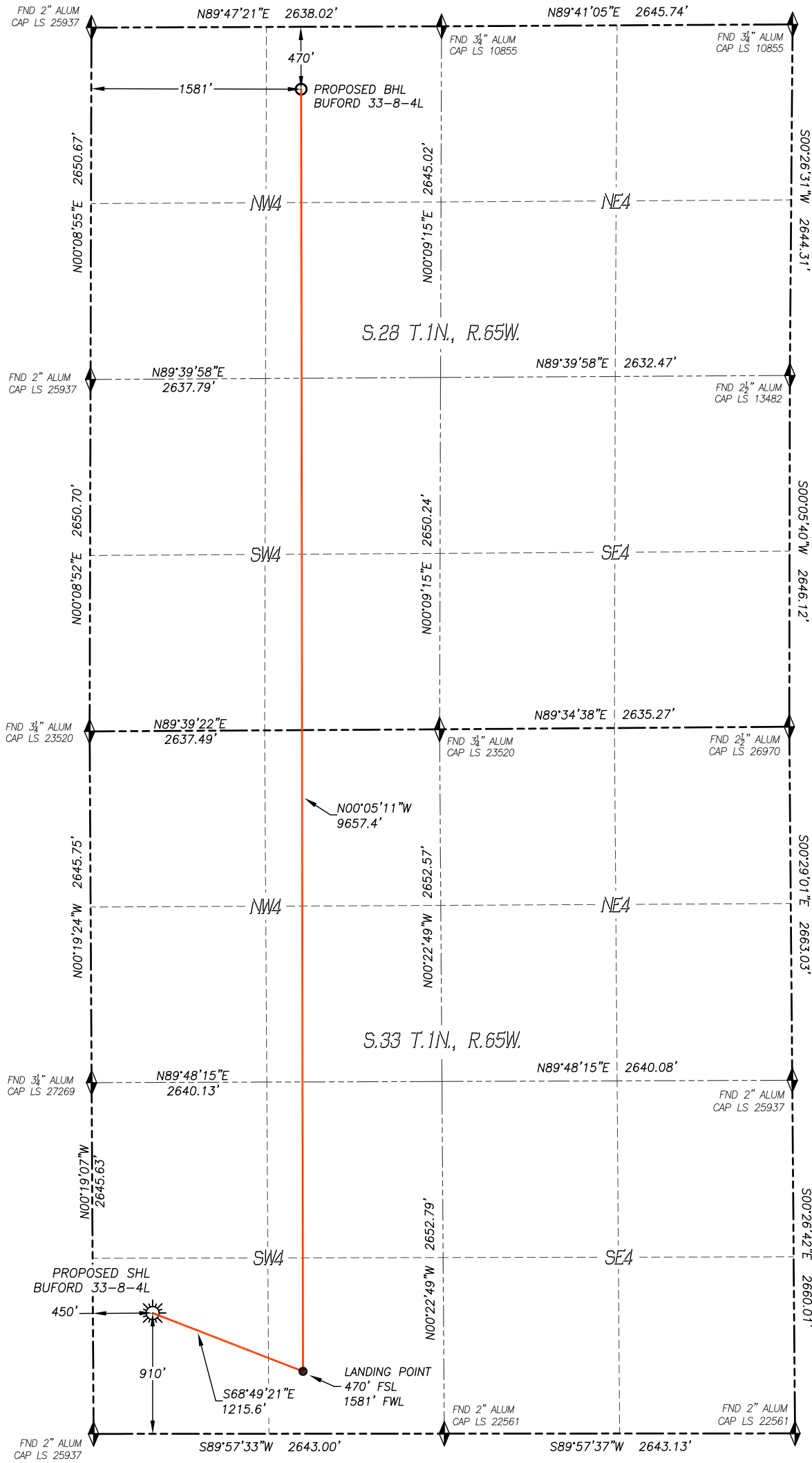


WELL LOCATION CERTIFICATE

BUFORD 33-8-4L

SECTION: 33
TOWNSHIP: 1N
RANGE: 65W



IN ACCORDANCE WITH A REQUEST FROM CONFLUENCE RESOURCES, DALEY LAND SURVEYING, INC. HAS DETERMINED THE SURFACE LOCATION OF THE BUFORD 33-8-4L WELL TO BE 910' FSL, 450' FWL, AS MEASURED AT NINETY (90) DEGREES FROM THE SECTION LINES OF SECTION 33, TOWNSHIP 1 NORTH, RANGE 65 WEST AND THE BOTTOM HOLE LOCATION TO BE 470' FNL, 1581' FWL, AS MEASURED AT NINETY (90) DEGREES FROM THE SECTION LINES OF SECTION 28, TOWNSHIP 1 NORTH, RANGE 65 WEST, OF THE 6TH PRINCIPAL MERIDIAN, WELD COUNTY, COLORADO.

I HEREBY STATE THAT THIS WELL LOCATION CERTIFICATE WAS PREPARED BY ME OR UNDER MY DIRECT SUPERVISION, THAT THE WORK WAS COMPLETED ON 5/3/2017 FOR AND ON BEHALF OF CONFLUENCE RESOURCES, AND THAT THIS MAP DOES NOT REPRESENT A BOUNDARY SURVEY, IT IS NOT A LAND SURVEY PLAT OR AN IMPROVEMENT SURVEY PLAT AND IT IS NOT TO BE RELIED UPON FOR THE ESTABLISHMENT OF FENCE, BUILDING OR OTHER FUTURE IMPROVEMENT LINES.

NOTES:

- 1) BEARINGS FOR THIS MAP ARE ASSUMED AND BASED UPON GPS OBSERVATIONS MADE BETWEEN MONUMENTS LOCATED AT THE SOUTHWEST CORNER AND THE WEST QUARTER CORNER OF SECTION 33, T.1N., R.65W.
- 2) HORIZONTAL DATUM IS NAD83.
- 3) VERTICAL DATUM IS NAVD88 AND ORIGINATES FROM THE LOCAL C.O.R.S. NETWORK, UTILIZING THE GEOID12A MODEL.
- 4) SEE LOCATION DRAWING FOR VISIBLE IMPROVEMENTS WITHIN 500' OF PROPOSED DISTURBED AREA.
- 5) SURFACE USE: AGRICULTURAL.
- 6) INST. OPERATOR: KYLE DALEY



NEAREST CULTURAL ITEMS:

BUILDING:	1916'± SW
BUILDING UNIT:	2150'± SW
HIGH OCC. BLD. UNIT:	5280'+
DES. OUTSIDE ACTIVITY AREA:	5280'+
PUBLIC ROAD:	894'± S
ABOVE GROUND UTILITY:	515'± W
RAILROAD:	5280'+
PROPERTY LINE:	450'± W
SCHOOL FACILITY:	5280'+
SCHOOL PROPERTY LINE:	5280'+
CHILD CARE CENTER:	5280'+

NAD 83 LATITUDE AND LONGITUDE

SURFACE LOCATION:		LANDING POINT/TPZ:	
LATITUDE:	N40.00303°	LATITUDE:	N40.00183°
LONGITUDE:	W104.67681°	LONGITUDE:	W104.67276°
ELEV:	5081'		
PDOP:	1.1		
QTR/QTR:	SW4/SW4	BOTTOM HOLE:	
		LATITUDE:	N40.02833°
		LONGITUDE:	W104.67281°

- LEGEND**
- ◆ FOUND MONUMENT
 - ◇ CALCULATED POSITION
 - ☀ PROPOSED WELL
 - BOTTOM HOLE
 - ⊙ ABANDONED WELL
 - ⊗ EXISTING WELL

