

CONFLUENCE RESOURCES

Location: COLORADO Slot: SLOT#07 BUFORD 33-8-2L (1010'FSL & 300'FWL,SEC.33)
Field: WELD COUNTY (NAD83, TRUE NORTH) Well: BUFORD 33-8-2L
Facility: SEC.33-T01N-R65W Wellbore: BUFORD 33-8-2L PWB

Plot reference wellpath is BUFORD 33-8-2L (REV-A.0) PWP
Grid System: NAD83 / Lambert Colorado SP, Northern Zone (501), US feet
True vertical depths are referenced to RIG (20.5) (RKB)
North Reference: True north
Measured depths are referenced to RIG (20.5) (RKB)
Scale: True distance
RIG (20.5) (RKB) to Mean Sea Level: 5097.5 feet
Depths are in feet
Mean Sea Level to Mud line (At Slot: SLOT#07 BUFORD 33-8-2L (1010'FSL & 300'FWL,SEC.33)): 0 feet
Created by: robiale01 on 2019-10-09
Coordinates are in feet referenced to Slot
Database: WADENVER

Location Information

Facility Name				Grid East (US ft)	Grid North (US ft)	Latitude	Longitude
SEC.33-T01N-R65W				3230456.897	1245096.090	40°00'11.664"N	104°40'38.424"W
Slot	Local N (ft)	Local E (ft)	Grid East (US ft)	Grid North (US ft)	Latitude	Longitude	
SLOT#07 BUFORD 33-8-2L (1010'FSL & 300'FWL,SEC.33)	25.50	-2.80	3230453.860	1245121.562	40°00'11.916"N	104°40'38.460"W	
RIG (20.5) (RKB) to Mud line (At Slot: SLOT#07 BUFORD 33-8-2L (1010'FSL & 300'FWL,SEC.33))						5097.5ft	
Mean Sea Level to Mud line (At Slot: SLOT#07 BUFORD 33-8-2L (1010'FSL & 300'FWL,SEC.33))						0ft	
RIG (20.5) (RKB) to Mean Sea Level						5097.5ft	

Targets

Name	MD (ft)	TVD (ft)	Local N (ft)	Local E (ft)	Grid East (US ft)	Grid North (US ft)	Latitude	Longitude
SEC.28-T01N-R65W		-2.50	-25.50	2.80	3230456.90	1245096.09	40°00'11.664"N	104°40'38.424"W
SEC.33-T01N-R65W		-2.50	-25.50	2.80	3230456.90	1245096.09	40°00'11.664"N	104°40'38.424"W
BUFORD 33-8-2L BHL REV-1 (470'FNL & 1296'FWL,SEC.28)	17478.87	7274.50	9114.49	985.77	3231355.00	1254244.48	40°01'41.988"N	104°40'25.788"W
BUFORD 33-8-2L LP REV-1 (470'FSL & 1296'FWL,SEC.33)	7825.24	7280.50	-539.12	1000.16	3231458.94	1244691.76	40°00'06.588"N	104°40'25.698"W

Survey Program

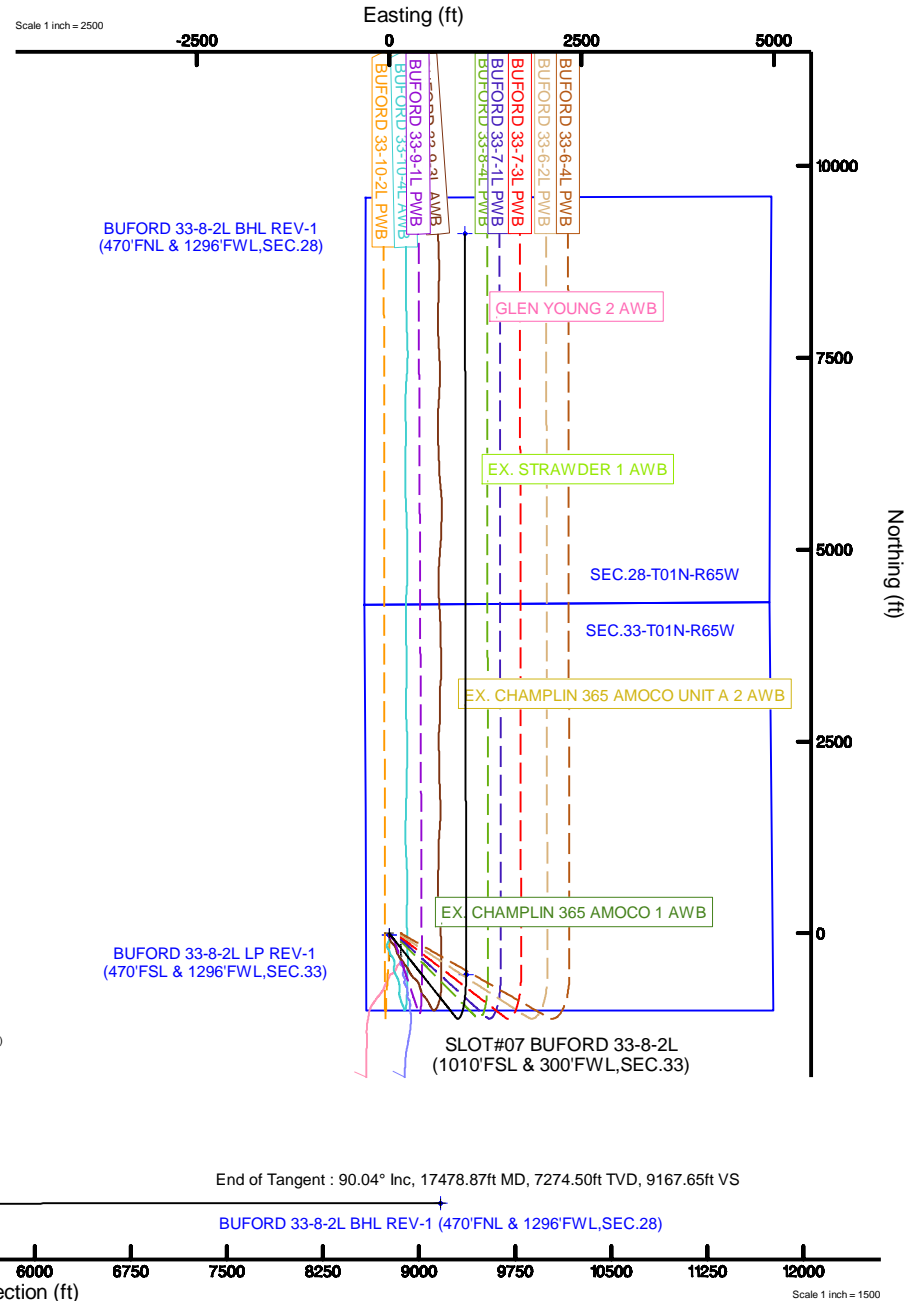
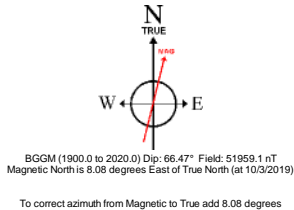
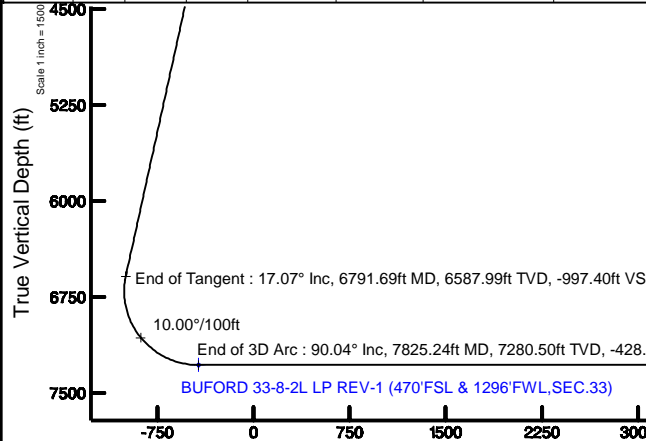
Start MD (ft)	End MD (ft)	Tool	Model	Log Name/Comment	Wellbore
20.50	1500.00	BHI NavTrak	BHI NavTrak (Rotating+Axial Corr)		BUFORD 33-8-2L PWB
1500.00	17478.87	BHI AutoTrak Curve	BHI AutoTrak Curve (Short)		BUFORD 33-8-2L PWB

Well Profile Data

Design Comment	MD (ft)	Inc (°)	Az (°)	TVD (ft)	Local N (ft)	Local E (ft)	DLS (°/100ft)	VS (ft)
Tie On	20.50	0.000	141.617	20.50	0.00	0.00	0.00	0.00
End of Tangent	1600.00	0.000	141.617	1600.00	0.00	0.00	0.00	0.00
End of Build	2453.56	17.071	141.617	2440.99	-98.94	78.37	2.00	-89.94
End of Tangent	6791.69	17.071	141.617	6587.99	-1097.22	869.11	0.00	-997.40
End of 3D Arc	7825.24	90.036	359.915	7280.50	-539.12	1000.16	10.00	-428.46
End of Tangent	17478.87	90.036	359.915	7274.50	9114.49	985.77	0.00	9167.65

Bottom Hole Location

MD (ft)	Inc (°)	Az (°)	TVD (ft)	Local N (ft)	Local E (ft)	Grid East (US ft)	Grid North (US ft)	Latitude	Longitude
17478.87	90.036	359.915	7274.50	9114.49	985.77	3231355.00	1254244.48	40°01'41.988"N	104°40'25.788"W



Planned Wellpath Report

BUFORD 33-8-2L (REV-A.0) PWP

Page 1 of 10



REFERENCE WELLPATH IDENTIFICATION

Operator	CONFLUENCE RESOURCES	Slot	SLOT#07 BUFORD 33-8-2L (1010'FSL & 300'FWL,SEC.33)
Area	COLORADO	Well	BUFORD 33-8-2L
Field	WELD COUNTY (NAD83, TRUE NORTH)	Wellbore	BUFORD 33-8-2L PWB
Facility	SEC.33-T01N-R65W		

REPORT SETUP INFORMATION

Projection System	NAD83 / Lambert Colorado SP, Northern Zone (501), US feet	Software System	WellArchitect® 5.1
North Reference	True	User	Robiale01
Scale	0.999966	Report Generated	10/9/2019 at 3:56:54 PM
Convergence at slot	0.53° East	Database/Source file	WA DENVER/BUFORD_33-8-2L_REV-A.0_PWP.xml

WELLPATH LOCATION

	Local coordinates		Grid coordinates		Geographic coordinates	
	North[ft]	East[ft]	Easting[US ft]	Northing[US ft]	Latitude	Longitude
Slot Location	25.50	-2.80	3230453.86	1245121.56	40°00'11.916"N	104°40'38.460"W
Facility Reference Pt			3230456.90	1245096.09	40°00'11.664"N	104°40'38.424"W
Field Reference Pt			3230456.90	1245096.09	40°00'11.664"N	104°40'38.424"W

WELLPATH DATUM

Calculation method	Minimum curvature	RIG (20.5') (RKB) to Facility Vertical Datum	5097.50ft
Horizontal Reference Pt	Slot	RIG (20.5') (RKB) to Mean Sea Level	5097.50ft
Vertical Reference Pt	RIG (20.5') (RKB)	RIG (20.5') (RKB) to Mud Line at Slot (SLOT#07 BUFORD 33-8-2L (1010'FSL & 300'FWL,SEC.33))	5097.50ft
MD Reference Pt	RIG (20.5') (RKB)	Section Origin	N 0.00, E 0.00 ft
Field Vertical Reference	Mean Sea Level	Section Azimuth	6.17°

Planned Wellpath Report

BUFORD 33-8-2L (REV-A.0) PWP

Page 2 of 10



REFERENCE WELLPATH IDENTIFICATION

Operator	CONFLUENCE RESOURCES	Slot	SLOT#07 BUFORD 33-8-2L (1010'FSL & 300'FWL,SEC.33)
Area	COLORADO	Well	BUFORD 33-8-2L
Field	WELD COUNTY (NAD83, TRUE NORTH)	Wellbore	BUFORD 33-8-2L PWB
Facility	SEC.33-T01N-R65W		

WELLPATH DATA (181 stations) † = interpolated/extrapolated station

MD [ft]	Inclination [°]	Azimuth [°]	TVD [ft]	Vert Sect [ft]	North [ft]	East [ft]	Latitude	Longitude	DLS [°/100ft]	Comments
0.00†	0.000	141.617	0.00	0.00	0.00	0.00	40°00'11.916"N	104°40'38.460"W	0.00	
20.50	0.000	141.617	20.50	0.00	0.00	0.00	40°00'11.916"N	104°40'38.460"W	0.00	Tie On
120.50†	0.000	141.617	120.50	0.00	0.00	0.00	40°00'11.916"N	104°40'38.460"W	0.00	
220.50†	0.000	141.617	220.50	0.00	0.00	0.00	40°00'11.916"N	104°40'38.460"W	0.00	
320.50†	0.000	141.617	320.50	0.00	0.00	0.00	40°00'11.916"N	104°40'38.460"W	0.00	
420.50†	0.000	141.617	420.50	0.00	0.00	0.00	40°00'11.916"N	104°40'38.460"W	0.00	
520.50†	0.000	141.617	520.50	0.00	0.00	0.00	40°00'11.916"N	104°40'38.460"W	0.00	
620.50†	0.000	141.617	620.50	0.00	0.00	0.00	40°00'11.916"N	104°40'38.460"W	0.00	
720.50†	0.000	141.617	720.50	0.00	0.00	0.00	40°00'11.916"N	104°40'38.460"W	0.00	
820.50†	0.000	141.617	820.50	0.00	0.00	0.00	40°00'11.916"N	104°40'38.460"W	0.00	
920.50†	0.000	141.617	920.50	0.00	0.00	0.00	40°00'11.916"N	104°40'38.460"W	0.00	
1020.50†	0.000	141.617	1020.50	0.00	0.00	0.00	40°00'11.916"N	104°40'38.460"W	0.00	
1120.50†	0.000	141.617	1120.50	0.00	0.00	0.00	40°00'11.916"N	104°40'38.460"W	0.00	
1220.50†	0.000	141.617	1220.50	0.00	0.00	0.00	40°00'11.916"N	104°40'38.460"W	0.00	
1320.50†	0.000	141.617	1320.50	0.00	0.00	0.00	40°00'11.916"N	104°40'38.460"W	0.00	
1420.50†	0.000	141.617	1420.50	0.00	0.00	0.00	40°00'11.916"N	104°40'38.460"W	0.00	
1520.50†	0.000	141.617	1520.50	0.00	0.00	0.00	40°00'11.916"N	104°40'38.460"W	0.00	
1600.00	0.000	141.617	1600.00	0.00	0.00	0.00	40°00'11.916"N	104°40'38.460"W	0.00	End of Tangent
1620.50†	0.410	141.617	1620.50	-0.05	-0.06	0.05	40°00'11.915"N	104°40'38.459"W	2.00	
1720.50†	2.410	141.617	1720.46	-1.81	-1.99	1.57	40°00'11.896"N	104°40'38.440"W	2.00	
1820.50†	4.410	141.617	1820.28	-6.04	-6.65	5.27	40°00'11.850"N	104°40'38.392"W	2.00	
1920.50†	6.410	141.617	1919.83	-12.76	-14.04	11.12	40°00'11.777"N	104°40'38.317"W	2.00	
2020.50†	8.410	141.617	2018.99	-21.95	-24.15	19.13	40°00'11.677"N	104°40'38.214"W	2.00	
2120.50†	10.410	141.617	2117.64	-33.60	-36.96	29.28	40°00'11.551"N	104°40'38.084"W	2.00	
2220.50†	12.410	141.617	2215.66	-47.70	-52.47	41.56	40°00'11.397"N	104°40'37.926"W	2.00	
2320.50†	14.410	141.617	2312.93	-64.22	-70.65	55.96	40°00'11.218"N	104°40'37.741"W	2.00	
2420.50†	16.410	141.617	2409.33	-83.16	-91.48	72.46	40°00'11.012"N	104°40'37.529"W	2.00	
2453.56	17.071	141.617	2440.99	-89.94	-98.94	78.37	40°00'10.938"N	104°40'37.453"W	2.00	End of Build
2520.50†	17.071	141.617	2504.98	-103.94	-114.35	90.57	40°00'10.786"N	104°40'37.296"W	0.00	
2620.50†	17.071	141.617	2600.57	-124.86	-137.36	108.80	40°00'10.559"N	104°40'37.062"W	0.00	

Planned Wellpath Report

BUFORD 33-8-2L (REV-A.0) PWP

Page 3 of 10

REFERENCE WELLPATH IDENTIFICATION

Operator	CONFLUENCE RESOURCES	Slot	SLOT#07 BUFORD 33-8-2L (1010'FSL & 300'FWL,SEC.33)
Area	COLORADO	Well	BUFORD 33-8-2L
Field	WELD COUNTY (NAD83, TRUE NORTH)	Wellbore	BUFORD 33-8-2L PWB
Facility	SEC.33-T01N-R65W		

WELLPATH DATA (181 stations) † = interpolated/extrapolated station

MD [ft]	Inclination [°]	Azimuth [°]	TVD [ft]	Vert Sect [ft]	North [ft]	East [ft]	Latitude	Longitude	DLS [°/100ft]	Comments
2720.50†	17.071	141.617	2696.17	-145.78	-160.37	127.03	40°00'10.331"N	104°40'36.828"W	0.00	
2820.50†	17.071	141.617	2791.76	-166.70	-183.38	145.26	40°00'10.104"N	104°40'36.593"W	0.00	
2920.50†	17.071	141.617	2887.35	-187.62	-206.39	163.48	40°00'09.876"N	104°40'36.359"W	0.00	
3020.50†	17.071	141.617	2982.95	-208.53	-229.40	181.71	40°00'09.649"N	104°40'36.125"W	0.00	
3120.50†	17.071	141.617	3078.54	-229.45	-252.42	199.94	40°00'09.422"N	104°40'35.891"W	0.00	
3220.50†	17.071	141.617	3174.14	-250.37	-275.43	218.17	40°00'09.194"N	104°40'35.657"W	0.00	
3320.50†	17.071	141.617	3269.73	-271.29	-298.44	236.39	40°00'08.967"N	104°40'35.422"W	0.00	
3420.50†	17.071	141.617	3365.32	-292.21	-321.45	254.62	40°00'08.739"N	104°40'35.188"W	0.00	
3520.50†	17.071	141.617	3460.92	-313.13	-344.46	272.85	40°00'08.512"N	104°40'34.954"W	0.00	
3620.50†	17.071	141.617	3556.51	-334.04	-367.47	291.08	40°00'08.284"N	104°40'34.720"W	0.00	
3720.50†	17.071	141.617	3652.11	-354.96	-390.48	309.30	40°00'08.057"N	104°40'34.485"W	0.00	
3820.50†	17.071	141.617	3747.70	-375.88	-413.50	327.53	40°00'07.830"N	104°40'34.251"W	0.00	
3920.50†	17.071	141.617	3843.29	-396.80	-436.51	345.76	40°00'07.602"N	104°40'34.017"W	0.00	
4020.50†	17.071	141.617	3938.89	-417.72	-459.52	363.99	40°00'07.375"N	104°40'33.783"W	0.00	
4120.50†	17.071	141.617	4034.48	-438.64	-482.53	382.21	40°00'07.147"N	104°40'33.549"W	0.00	
4220.50†	17.071	141.617	4130.08	-459.55	-505.54	400.44	40°00'06.920"N	104°40'33.314"W	0.00	
4320.50†	17.071	141.617	4225.67	-480.47	-528.55	418.67	40°00'06.693"N	104°40'33.080"W	0.00	
4420.50†	17.071	141.617	4321.26	-501.39	-551.57	436.90	40°00'06.465"N	104°40'32.846"W	0.00	
4520.50†	17.071	141.617	4416.86	-522.31	-574.58	455.12	40°00'06.238"N	104°40'32.612"W	0.00	
4620.50†	17.071	141.617	4512.45	-543.23	-597.59	473.35	40°00'06.010"N	104°40'32.377"W	0.00	
4720.50†	17.071	141.617	4608.05	-564.14	-620.60	491.58	40°00'05.783"N	104°40'32.143"W	0.00	
4820.50†	17.071	141.617	4703.64	-585.06	-643.61	509.81	40°00'05.556"N	104°40'31.909"W	0.00	
4920.50†	17.071	141.617	4799.24	-605.98	-666.62	528.03	40°00'05.328"N	104°40'31.675"W	0.00	
5020.50†	17.071	141.617	4894.83	-626.90	-689.64	546.26	40°00'05.101"N	104°40'31.441"W	0.00	
5120.50†	17.071	141.617	4990.42	-647.82	-712.65	564.49	40°00'04.873"N	104°40'31.206"W	0.00	
5220.50†	17.071	141.617	5086.02	-668.74	-735.66	582.72	40°00'04.646"N	104°40'30.972"W	0.00	
5320.50†	17.071	141.617	5181.61	-689.65	-758.67	600.94	40°00'04.419"N	104°40'30.738"W	0.00	
5420.50†	17.071	141.617	5277.21	-710.57	-781.68	619.17	40°00'04.191"N	104°40'30.504"W	0.00	
5520.50†	17.071	141.617	5372.80	-731.49	-804.69	637.40	40°00'03.964"N	104°40'30.270"W	0.00	
5620.50†	17.071	141.617	5468.39	-752.41	-827.70	655.63	40°00'03.736"N	104°40'30.035"W	0.00	

Planned Wellpath Report

BUFORD 33-8-2L (REV-A.0) PWP

Page 4 of 10

REFERENCE WELLPATH IDENTIFICATION

Operator	CONFLUENCE RESOURCES	Slot	SLOT#07 BUFORD 33-8-2L (1010'FSL & 300'FWL,SEC.33)
Area	COLORADO	Well	BUFORD 33-8-2L
Field	WELD COUNTY (NAD83, TRUE NORTH)	Wellbore	BUFORD 33-8-2L PWB
Facility	SEC.33-T01N-R65W		

WELLPATH DATA (181 stations) † = interpolated/extrapolated station

MD [ft]	Inclination [°]	Azimuth [°]	TVD [ft]	Vert Sect [ft]	North [ft]	East [ft]	Latitude	Longitude	DLS [°/100ft]	Comments
5720.50†	17.071	141.617	5563.99	-773.33	-850.72	673.85	40°00'03.509"N	104°40'29.801"W	0.00	
5820.50†	17.071	141.617	5659.58	-794.24	-873.73	692.08	40°00'03.281"N	104°40'29.567"W	0.00	
5920.50†	17.071	141.617	5755.18	-815.16	-896.74	710.31	40°00'03.054"N	104°40'29.333"W	0.00	
6020.50†	17.071	141.617	5850.77	-836.08	-919.75	728.54	40°00'02.827"N	104°40'29.098"W	0.00	
6120.50†	17.071	141.617	5946.36	-857.00	-942.76	746.76	40°00'02.599"N	104°40'28.864"W	0.00	
6220.50†	17.071	141.617	6041.96	-877.92	-965.77	764.99	40°00'02.372"N	104°40'28.630"W	0.00	
6320.50†	17.071	141.617	6137.55	-898.84	-988.79	783.22	40°00'02.144"N	104°40'28.396"W	0.00	
6420.50†	17.071	141.617	6233.15	-919.75	-1011.80	801.45	40°00'01.917"N	104°40'28.162"W	0.00	
6520.50†	17.071	141.617	6328.74	-940.67	-1034.81	819.67	40°00'01.690"N	104°40'27.927"W	0.00	
6620.50†	17.071	141.617	6424.33	-961.59	-1057.82	837.90	40°00'01.462"N	104°40'27.693"W	0.00	
6720.50†	17.071	141.617	6519.93	-982.51	-1080.83	856.13	40°00'01.235"N	104°40'27.459"W	0.00	
6791.69	17.071	141.617	6587.99	-997.40	-1097.22	869.11	40°00'01.073"N	104°40'27.292"W	0.00	End of Tangent
6820.50†	14.960	134.494	6615.67	-1002.72	-1103.14	874.38	40°00'01.014"N	104°40'27.224"W	10.00	
6920.50†	10.786	92.263	6713.34	-1010.11	-1112.58	892.99	40°00'00.921"N	104°40'26.985"W	10.00	
7020.50†	14.370	47.906	6811.15	-1000.18	-1104.61	911.59	40°00'01.000"N	104°40'26.746"W	10.00	
7120.50†	22.232	27.676	6906.11	-973.25	-1079.47	929.63	40°00'01.248"N	104°40'26.514"W	10.00	
7220.50†	31.298	18.167	6995.34	-930.13	-1037.93	946.56	40°00'01.659"N	104°40'26.297"W	10.00	
7320.50†	40.770	12.675	7076.14	-872.14	-981.25	961.86	40°00'02.219"N	104°40'26.100"W	10.00	
7420.50†	50.418	8.976	7146.04	-801.03	-911.16	975.07	40°00'02.911"N	104°40'25.931"W	10.00	
7520.50†	60.154	6.191	7202.93	-718.96	-829.77	985.79	40°00'03.716"N	104°40'25.793"W	10.00	
7620.50†	69.938	3.907	7245.07	-628.43	-739.57	993.69	40°00'04.607"N	104°40'25.691"W	10.00	
7720.50†	79.748	1.894	7271.19	-532.20	-643.29	998.53	40°00'05.559"N	104°40'25.629"W	10.00	
7820.50†	89.570	0.003	7280.48	-433.17	-543.87	1000.16	40°00'06.541"N	104°40'25.608"W	10.00	
7825.24	90.036	359.915	7280.50†	-428.46	-539.12	1000.16	40°00'06.588"N	104°40'25.608"W	10.00	End of 3D Arc
7920.50†	90.036	359.915	7280.44	-333.77	-443.87	1000.02	40°00'07.529"N	104°40'25.610"W	0.00	
8020.50†	90.036	359.915	7280.38	-234.36	-343.87	999.87	40°00'08.518"N	104°40'25.612"W	0.00	
8120.50†	90.036	359.915	7280.32	-134.96	-243.87	999.72	40°00'09.506"N	104°40'25.614"W	0.00	
8220.50†	90.036	359.915	7280.25	-35.55	-143.87	999.57	40°00'10.494"N	104°40'25.615"W	0.00	
8320.50†	90.036	359.915	7280.19	63.85	-43.87	999.42	40°00'11.482"N	104°40'25.617"W	0.00	
8420.50†	90.036	359.915	7280.13	163.25	56.13	999.27	40°00'12.471"N	104°40'25.619"W	0.00	

Planned Wellpath Report

BUFORD 33-8-2L (REV-A.0) PWP

Page 5 of 10

REFERENCE WELLPATH IDENTIFICATION

Operator	CONFLUENCE RESOURCES	Slot	SLOT#07 BUFORD 33-8-2L (1010'FSL & 300'FWL,SEC.33)
Area	COLORADO	Well	BUFORD 33-8-2L
Field	WELD COUNTY (NAD83, TRUE NORTH)	Wellbore	BUFORD 33-8-2L PWB
Facility	SEC.33-T01N-R65W		

WELLPATH DATA (181 stations) † = interpolated/extrapolated station

MD [ft]	Inclination [°]	Azimuth [°]	TVD [ft]	Vert Sect [ft]	North [ft]	East [ft]	Latitude	Longitude	DLS [°/100ft]	Comments
8520.50†	90.036	359.915	7280.07	262.66	156.13	999.12	40°00'13.459"N	104°40'25.621"W	0.00	
8620.50†	90.036	359.915	7280.01	362.06	256.13	998.97	40°00'14.447"N	104°40'25.623"W	0.00	
8720.50†	90.036	359.915	7279.94	461.47	356.13	998.82	40°00'15.435"N	104°40'25.625"W	0.00	
8820.50†	90.036	359.915	7279.88	560.87	456.13	998.67	40°00'16.423"N	104°40'25.627"W	0.00	
8920.50†	90.036	359.915	7279.82	660.27	556.13	998.52	40°00'17.412"N	104°40'25.628"W	0.00	
9020.50†	90.036	359.915	7279.76	759.68	656.13	998.38	40°00'18.400"N	104°40'25.630"W	0.00	
9120.50†	90.036	359.915	7279.69	859.08	756.13	998.23	40°00'19.388"N	104°40'25.632"W	0.00	
9220.50†	90.036	359.915	7279.63	958.49	856.13	998.08	40°00'20.376"N	104°40'25.634"W	0.00	
9320.50†	90.036	359.915	7279.57	1057.89	956.13	997.93	40°00'21.365"N	104°40'25.636"W	0.00	
9420.50†	90.036	359.915	7279.51	1157.29	1056.13	997.78	40°00'22.353"N	104°40'25.638"W	0.00	
9520.50†	90.036	359.915	7279.45	1256.70	1156.13	997.63	40°00'23.341"N	104°40'25.640"W	0.00	
9620.50†	90.036	359.915	7279.38	1356.10	1256.13	997.48	40°00'24.329"N	104°40'25.641"W	0.00	
9720.50†	90.036	359.915	7279.32	1455.51	1356.13	997.33	40°00'25.318"N	104°40'25.643"W	0.00	
9820.50†	90.036	359.915	7279.26	1554.91	1456.13	997.18	40°00'26.306"N	104°40'25.645"W	0.00	
9920.50†	90.036	359.915	7279.20	1654.31	1556.13	997.03	40°00'27.294"N	104°40'25.647"W	0.00	
10020.50†	90.036	359.915	7279.14	1753.72	1656.13	996.88	40°00'28.282"N	104°40'25.649"W	0.00	
10120.50†	90.036	359.915	7279.07	1853.12	1756.13	996.74	40°00'29.270"N	104°40'25.651"W	0.00	
10220.50†	90.036	359.915	7279.01	1952.53	1856.13	996.59	40°00'30.259"N	104°40'25.653"W	0.00	
10320.50†	90.036	359.915	7278.95	2051.93	1956.13	996.44	40°00'31.247"N	104°40'25.655"W	0.00	
10420.50†	90.036	359.915	7278.89	2151.34	2056.13	996.29	40°00'32.235"N	104°40'25.656"W	0.00	
10520.50†	90.036	359.915	7278.82	2250.74	2156.13	996.14	40°00'33.223"N	104°40'25.658"W	0.00	
10620.50†	90.036	359.915	7278.76	2350.14	2256.13	995.99	40°00'34.212"N	104°40'25.660"W	0.00	
10720.50†	90.036	359.915	7278.70	2449.55	2356.13	995.84	40°00'35.200"N	104°40'25.662"W	0.00	
10820.50†	90.036	359.915	7278.64	2548.95	2456.13	995.69	40°00'36.188"N	104°40'25.664"W	0.00	
10920.50†	90.036	359.915	7278.58	2648.36	2556.13	995.54	40°00'37.176"N	104°40'25.666"W	0.00	
11020.50†	90.036	359.915	7278.51	2747.76	2656.13	995.39	40°00'38.164"N	104°40'25.668"W	0.00	
11120.50†	90.036	359.915	7278.45	2847.16	2756.13	995.25	40°00'39.153"N	104°40'25.669"W	0.00	
11220.50†	90.036	359.915	7278.39	2946.57	2856.13	995.10	40°00'40.141"N	104°40'25.671"W	0.00	
11320.50†	90.036	359.915	7278.33	3045.97	2956.13	994.95	40°00'41.129"N	104°40'25.673"W	0.00	
11420.50†	90.036	359.915	7278.27	3145.38	3056.13	994.80	40°00'42.117"N	104°40'25.675"W	0.00	

Planned Wellpath Report

BUFORD 33-8-2L (REV-A.0) PWP

Page 6 of 10



REFERENCE WELLPATH IDENTIFICATION

Operator	CONFLUENCE RESOURCES	Slot	SLOT#07 BUFORD 33-8-2L (1010'FSL & 300'FWL,SEC.33)
Area	COLORADO	Well	BUFORD 33-8-2L
Field	WELD COUNTY (NAD83, TRUE NORTH)	Wellbore	BUFORD 33-8-2L PWB
Facility	SEC.33-T01N-R65W		

WELLPATH DATA (181 stations) † = interpolated/extrapolated station

MD [ft]	Inclination [°]	Azimuth [°]	TVD [ft]	Vert Sect [ft]	North [ft]	East [ft]	Latitude	Longitude	DLS [°/100ft]	Comments
11520.50†	90.036	359.915	7278.20	3244.78	3156.13	994.65	40°00'43.106"N	104°40'25.677"W	0.00	
11620.50†	90.036	359.915	7278.14	3344.18	3256.13	994.50	40°00'44.094"N	104°40'25.679"W	0.00	
11720.50†	90.036	359.915	7278.08	3443.59	3356.13	994.35	40°00'45.082"N	104°40'25.681"W	0.00	
11820.50†	90.036	359.915	7278.02	3542.99	3456.13	994.20	40°00'46.070"N	104°40'25.682"W	0.00	
11920.50†	90.036	359.915	7277.95	3642.40	3556.13	994.05	40°00'47.059"N	104°40'25.684"W	0.00	
12020.50†	90.036	359.915	7277.89	3741.80	3656.13	993.90	40°00'48.047"N	104°40'25.686"W	0.00	
12120.50†	90.036	359.915	7277.83	3841.20	3756.13	993.75	40°00'49.035"N	104°40'25.688"W	0.00	
12220.50†	90.036	359.915	7277.77	3940.61	3856.13	993.61	40°00'50.023"N	104°40'25.690"W	0.00	
12320.50†	90.036	359.915	7277.71	4040.01	3956.13	993.46	40°00'51.011"N	104°40'25.692"W	0.00	
12420.50†	90.036	359.915	7277.64	4139.42	4056.13	993.31	40°00'52.000"N	104°40'25.694"W	0.00	
12520.50†	90.036	359.915	7277.58	4238.82	4156.13	993.16	40°00'52.988"N	104°40'25.696"W	0.00	
12620.50†	90.036	359.915	7277.52	4338.22	4256.13	993.01	40°00'53.976"N	104°40'25.697"W	0.00	
12720.50†	90.036	359.915	7277.46	4437.63	4356.13	992.86	40°00'54.964"N	104°40'25.699"W	0.00	
12820.50†	90.036	359.915	7277.40	4537.03	4456.13	992.71	40°00'55.953"N	104°40'25.701"W	0.00	
12920.50†	90.036	359.915	7277.33	4636.44	4556.13	992.56	40°00'56.941"N	104°40'25.703"W	0.00	
13020.50†	90.036	359.915	7277.27	4735.84	4656.13	992.41	40°00'57.929"N	104°40'25.705"W	0.00	
13120.50†	90.036	359.915	7277.21	4835.24	4756.13	992.26	40°00'58.917"N	104°40'25.707"W	0.00	
13220.50†	90.036	359.915	7277.15	4934.65	4856.13	992.11	40°00'59.906"N	104°40'25.709"W	0.00	
13320.50†	90.036	359.915	7277.08	5034.05	4956.12	991.97	40°01'00.894"N	104°40'25.710"W	0.00	
13420.50†	90.036	359.915	7277.02	5133.46	5056.12	991.82	40°01'01.882"N	104°40'25.712"W	0.00	
13520.50†	90.036	359.915	7276.96	5232.86	5156.12	991.67	40°01'02.870"N	104°40'25.714"W	0.00	
13620.50†	90.036	359.915	7276.90	5332.27	5256.12	991.52	40°01'03.858"N	104°40'25.716"W	0.00	
13720.50†	90.036	359.915	7276.84	5431.67	5356.12	991.37	40°01'04.847"N	104°40'25.718"W	0.00	
13820.50†	90.036	359.915	7276.77	5531.07	5456.12	991.22	40°01'05.835"N	104°40'25.720"W	0.00	
13920.50†	90.036	359.915	7276.71	5630.48	5556.12	991.07	40°01'06.823"N	104°40'25.722"W	0.00	
14020.50†	90.036	359.915	7276.65	5729.88	5656.12	990.92	40°01'07.811"N	104°40'25.723"W	0.00	
14120.50†	90.036	359.915	7276.59	5829.29	5756.12	990.77	40°01'08.800"N	104°40'25.725"W	0.00	
14220.50†	90.036	359.915	7276.53	5928.69	5856.12	990.62	40°01'09.788"N	104°40'25.727"W	0.00	
14320.50†	90.036	359.915	7276.46	6028.09	5956.12	990.47	40°01'10.776"N	104°40'25.729"W	0.00	
14420.50†	90.036	359.915	7276.40	6127.50	6056.12	990.33	40°01'11.764"N	104°40'25.731"W	0.00	

Planned Wellpath Report

BUFORD 33-8-2L (REV-A.0) PWP

Page 7 of 10

REFERENCE WELLPATH IDENTIFICATION

Operator	CONFLUENCE RESOURCES	Slot	SLOT#07 BUFORD 33-8-2L (1010'FSL & 300'FWL,SEC.33)
Area	COLORADO	Well	BUFORD 33-8-2L
Field	WELD COUNTY (NAD83, TRUE NORTH)	Wellbore	BUFORD 33-8-2L PWB
Facility	SEC.33-T01N-R65W		

WELLPATH DATA (181 stations) † = interpolated/extrapolated station

MD [ft]	Inclination [°]	Azimuth [°]	TVD [ft]	Vert Sect [ft]	North [ft]	East [ft]	Latitude	Longitude	DLS [°/100ft]	Comments
14520.50†	90.036	359.915	7276.34	6226.90	6156.12	990.18	40°01'12.753"N	104°40'25.733"W	0.00	
14620.50†	90.036	359.915	7276.28	6326.31	6256.12	990.03	40°01'13.741"N	104°40'25.735"W	0.00	
14720.50†	90.036	359.915	7276.21	6425.71	6356.12	989.88	40°01'14.729"N	104°40'25.737"W	0.00	
14820.50†	90.036	359.915	7276.15	6525.11	6456.12	989.73	40°01'15.717"N	104°40'25.738"W	0.00	
14920.50†	90.036	359.915	7276.09	6624.52	6556.12	989.58	40°01'16.705"N	104°40'25.740"W	0.00	
15020.50†	90.036	359.915	7276.03	6723.92	6656.12	989.43	40°01'17.694"N	104°40'25.742"W	0.00	
15120.50†	90.036	359.915	7275.97	6823.33	6756.12	989.28	40°01'18.682"N	104°40'25.744"W	0.00	
15220.50†	90.036	359.915	7275.90	6922.73	6856.12	989.13	40°01'19.670"N	104°40'25.746"W	0.00	
15320.50†	90.036	359.915	7275.84	7022.13	6956.12	988.98	40°01'20.658"N	104°40'25.748"W	0.00	
15420.50†	90.036	359.915	7275.78	7121.54	7056.12	988.83	40°01'21.647"N	104°40'25.750"W	0.00	
15520.50†	90.036	359.915	7275.72	7220.94	7156.12	988.69	40°01'22.635"N	104°40'25.751"W	0.00	
15620.50†	90.036	359.915	7275.66	7320.35	7256.12	988.54	40°01'23.623"N	104°40'25.753"W	0.00	
15720.50†	90.036	359.915	7275.59	7419.75	7356.12	988.39	40°01'24.611"N	104°40'25.755"W	0.00	
15820.50†	90.036	359.915	7275.53	7519.15	7456.12	988.24	40°01'25.599"N	104°40'25.757"W	0.00	
15920.50†	90.036	359.915	7275.47	7618.56	7556.12	988.09	40°01'26.588"N	104°40'25.759"W	0.00	
16020.50†	90.036	359.915	7275.41	7717.96	7656.12	987.94	40°01'27.576"N	104°40'25.761"W	0.00	
16120.50†	90.036	359.915	7275.34	7817.37	7756.12	987.79	40°01'28.564"N	104°40'25.763"W	0.00	
16220.50†	90.036	359.915	7275.28	7916.77	7856.12	987.64	40°01'29.552"N	104°40'25.765"W	0.00	
16320.50†	90.036	359.915	7275.22	8016.17	7956.12	987.49	40°01'30.541"N	104°40'25.766"W	0.00	
16420.50†	90.036	359.915	7275.16	8115.58	8056.12	987.34	40°01'31.529"N	104°40'25.768"W	0.00	
16520.50†	90.036	359.915	7275.10	8214.98	8156.12	987.20	40°01'32.517"N	104°40'25.770"W	0.00	
16620.50†	90.036	359.915	7275.03	8314.39	8256.12	987.05	40°01'33.505"N	104°40'25.772"W	0.00	
16720.50†	90.036	359.915	7274.97	8413.79	8356.12	986.90	40°01'34.494"N	104°40'25.774"W	0.00	
16820.50†	90.036	359.915	7274.91	8513.20	8456.12	986.75	40°01'35.482"N	104°40'25.776"W	0.00	
16920.50†	90.036	359.915	7274.85	8612.60	8556.12	986.60	40°01'36.470"N	104°40'25.778"W	0.00	
17020.50†	90.036	359.915	7274.78	8712.00	8656.12	986.45	40°01'37.458"N	104°40'25.779"W	0.00	
17120.50†	90.036	359.915	7274.72	8811.41	8756.12	986.30	40°01'38.446"N	104°40'25.781"W	0.00	
17220.50†	90.036	359.915	7274.66	8910.81	8856.12	986.15	40°01'39.435"N	104°40'25.783"W	0.00	
17320.50†	90.036	359.915	7274.60	9010.22	8956.12	986.00	40°01'40.423"N	104°40'25.785"W	0.00	
17420.50†	90.036	359.915	7274.54	9109.62	9056.12	985.85	40°01'41.411"N	104°40'25.787"W	0.00	

Planned Wellpath Report

BUFORD 33-8-2L (REV-A.0) PWP

Page 8 of 10



REFERENCE WELLPATH IDENTIFICATION

Operator	CONFLUENCE RESOURCES	Slot	SLOT#07 BUFORD 33-8-2L (1010'FSL & 300'FWL,SEC.33)
Area	COLORADO	Well	BUFORD 33-8-2L
Field	WELD COUNTY (NAD83, TRUE NORTH)	Wellbore	BUFORD 33-8-2L PWB
Facility	SEC.33-T01N-R65W		

WELLPATH DATA (181 stations)

MD [ft]	Inclination [°]	Azimuth [°]	TVD [ft]	Vert Sect [ft]	North [ft]	East [ft]	Latitude	Longitude	DLS [°/100ft]	Comments
17478.87	90.036	359.915	7274.50 ²	9167.65	9114.49	985.77	40°01'41.988"N	104°40'25.788"W	0.00	End of Tangent

HOLE & CASING SECTIONS - Ref Wellbore: BUFORD 33-8-2L PWB Ref Wellpath: BUFORD 33-8-2L (REV-A.0) PWP

String/Diameter	Start MD [ft]	End MD [ft]	Interval [ft]	Start TVD [ft]	End TVD [ft]	Start N/S [ft]	Start E/W [ft]	End N/S [ft]	End E/W [ft]
13.5in Open Hole	20.50	1500.00	1479.50	20.50	1500.00	0.00	0.00	0.00	0.00
9.625in Casing Surface	20.50	1500.00	1479.50	20.50	1500.00	0.00	0.00	0.00	0.00
8.5in Open Hole	1500.00	17478.87	15978.87	1500.00	7274.50	0.00	0.00	9114.49	985.77

TARGETS

Name	MD [ft]	TVD [ft]	North [ft]	East [ft]	Grid East [US ft]	Grid North [US ft]	Latitude	Longitude	Shape
SEC.28-T01N-R65W		-2.50	-25.50	2.80	3230456.90	1245096.09	40°00'11.664"N	104°40'38.424"W	polygon
SEC.33-T01N-R65W		-2.50	-25.50	2.80	3230456.90	1245096.09	40°00'11.664"N	104°40'38.424"W	polygon
2) BUFORD 33-8-2L BHL REV-1 (470'FNL & 1296'FWL,SEC.28)	17478.87	7274.50	9114.49	985.77	3231355.00	1254244.48	40°01'41.988"N	104°40'25.788"W	point
1) BUFORD 33-8-2L LP REV-1 (470'FSL & 1296'FWL,SEC.33)	7825.24	7280.50	-539.12	1000.16	3231458.94	1244591.76	40°00'06.588"N	104°40'25.608"W	point

Planned Wellpath Report

BUFORD 33-8-2L (REV-A.0) PWP

Page 9 of 10

REFERENCE WELLPATH IDENTIFICATION			
Operator	CONFLUENCE RESOURCES	Slot	SLOT#07 BUFORD 33-8-2L (1010'FSL & 300'FWL,SEC.33)
Area	COLORADO	Well	BUFORD 33-8-2L
Field	WELD COUNTY (NAD83, TRUE NORTH)	Wellbore	BUFORD 33-8-2L PWB
Facility	SEC.33-T01N-R65W		

SURVEY PROGRAM - Ref Wellbore: BUFORD 33-8-2L PWB Ref Wellpath: BUFORD 33-8-2L (REV-A.0) PWP				
Start MD [ft]	End MD [ft]	Positional Uncertainty Model	Log Name/Comment	Wellbore
20.50	1500.00	BHI NaviTrak (Rotating+Axial Corr)		BUFORD 33-8-2L PWB
1500.00	17478.87	BHI AutoTrak Curve (Short)		BUFORD 33-8-2L PWB

Planned Wellpath Report

BUFORD 33-8-2L (REV-A.0) PWP

Page 10 of 10

REFERENCE WELLPATH IDENTIFICATION

Operator	CONFLUENCE RESOURCES	Slot	SLOT#07 BUFORD 33-8-2L (1010'FSL & 300'FWL,SEC.33)
Area	COLORADO	Well	BUFORD 33-8-2L
Field	WELD COUNTY (NAD83, TRUE NORTH)	Wellbore	BUFORD 33-8-2L PWB
Facility	SEC.33-T01N-R65W		

DESIGN COMMENTS

MD [ft]	Inclination [°]	Azimuth [°]	TVD [ft]	Comment
20.50	0.000	141.617	20.50	Tie On
1600.00	0.000	141.617	1600.00	End of Tangent
2453.56	17.071	141.617	2440.99	End of Build
6791.69	17.071	141.617	6587.99	End of Tangent
7825.24	90.036	359.915	7280.50	End of 3D Arc
17478.87	90.036	359.915	7274.50	End of Tangent