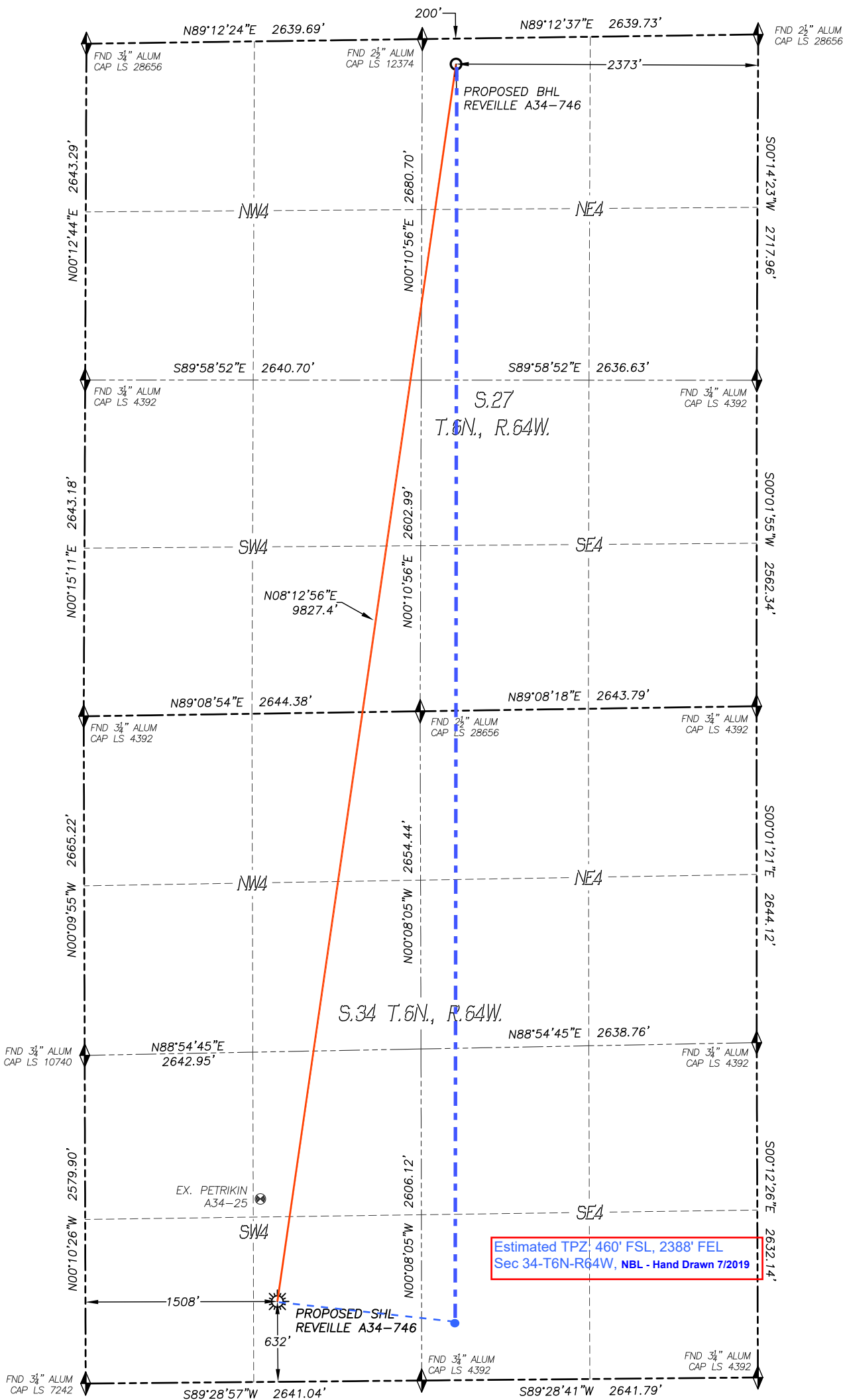


WELL LOCATION CERTIFICATE
REVEILLE A34-746

SECTION 34, TOWNSHIP 6 NORTH, RANGE 64 WEST OF THE 6TH P.M.

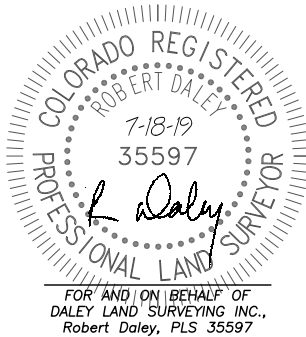


APPROVED
By Cory at 12:59 pm, Jul 24, 2019

IN ACCORDANCE WITH A REQUEST FROM GREG WILSON OF NOBLE ENERGY INC., DALEY LAND SURVEYING, INC. HAS DETERMINED THE SURFACE LOCATION OF THE REVEILLE A34-746 WELL TO BE 632' FSL, 1508' FWL, AS MEASURED AT NINETY (90) DEGREES FROM THE SECTION LINES OF SECTION 34, TOWNSHIP 6 NORTH, RANGE 64 WEST AND THE BOTTOM HOLE LOCATION TO BE 200' FNL, 2373' FEL, AS MEASURED AT NINETY (90) DEGREES FROM THE SECTION LINES OF SECTION 27, TOWNSHIP 6 NORTH, RANGE 64 WEST, OF THE 6TH PRINCIPAL MERIDIAN, WELD COUNTY, COLORADO.

I HEREBY STATE THAT THIS WELL LOCATION CERTIFICATE WAS PREPARED BY ME OR UNDER MY DIRECT SUPERVISION, THAT THE WORK WAS COMPLETED ON 4/18/2019 FOR AND ON BEHALF OF NOBLE ENERGY, INC., AND THAT THIS MAP DOES NOT REPRESENT A BOUNDARY SURVEY, IT IS NOT A LAND SURVEY PLAT OR AN IMPROVEMENT SURVEY PLAT AND IT IS NOT TO BE RELIED UPON FOR THE ESTABLISHMENT OF FENCE, BUILDING OR OTHER FUTURE IMPROVEMENT LINES.

- NOTES:**
- 1) BEARINGS FOR THIS MAP ARE ASSUMED AND BASED UPON GPS OBSERVATIONS MADE BETWEEN MONUMENTS LOCATED AT THE SOUTHWEST CORNER AND WEST QUARTER CORNER OF SECTION 34, T.6N., R.64W.
 - 2) HORIZONTAL DATUM IS NAD83.
 - 3) VERTICAL DATUM IS NAVD88 AND ORIGINATES FROM THE LOCAL C.O.R.S. NETWORK, UTILIZING THE GEOID12A MODEL.
 - 4) SEE LOCATION DRAWING FOR VISIBLE IMPROVEMENTS WITHIN 500' OF PROPOSED DISTURBED AREA.
 - 5) SURFACE USE: AGRICULTURAL.
 - 6) INST. OPERATOR: SCOTT ESTABROOKS.
 - 7) NEAREST WELL: 817'± NW - PETRIKIN A34-25



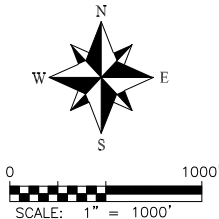
NEAREST CULTURAL ITEMS:

BUILDING: 685'± SE
BUILDING UNIT: 1096'± SE
HIGH OCC. BLD. UNIT: 5280'+
DES. OUTSIDE ACTIVITY AREA: 5280'+
PUBLIC ROAD: 619'± S
ABOVE GROUND UTILITY: 598'± S
RAILROAD: 5280'+
PROPERTY LINE: 197'± W

NAD 83 LATITUDE AND LONGITUDE

SURFACE LOCATION:	BOTTOM HOLE:
LATITUDE: N40.43725°	LATITUDE: N40.46395°
LONGITUDE: W104.54034°	LONGITUDE: W104.53530°
ELEV: 4632'	
PDOP: 1.2	
QTR/QTR: SE4/SW4	

- LEGEND**
- FOUND MONUMENT AS DESCRIBED
 - PROPOSED WELL
 - EXISTING WELL
 - BOTTOM HOLE
 - ABANDONED WELL
 - CALCULATED POSITION



noble energy

DALEY LAND
SURVEYING, INC.
303.953.9841