

NW. COR.
SEC. 13, T5N, R68W
FOUND 3 1/2" ALUM. CAP
P.L.S. NO. 36061

N. 1/4 COR.
SEC. 13, T5N, R68W
FOUND 2 1/2" ALUM. CAP
L.S. NO. 12374

NW. COR.
SEC. 18, T5N, R67W
FOUND 3 1/2" ALUM. CAP
ILLEGIBLE

N. 1/4 COR.
SEC. 18, T5N, R67W
FOUND 2 1/2" ALUM. CAP
L.S. NO. 30462

N 89°20'26" W 2755.29' (M)

N 89°20'03" W 2746.85' (M)

N 89°41'01" E 2435.87' (M)

WELLBORE CONTINUES
INTO SECTION 14

S 89°40'02" W 12824' GRID
N 89°58'20" W TRUE
S 81°51'02" W MAGNETIC

HEEL
LOCATION

PROWANT 18-5HZ
SURFACE LOCATION

T5N, R68W
13

T5N, R67W 18

W. 1/4 COR.
SEC. 13, T5N, R68W
FOUND 3 1/4" ALUM. CAP
L.S. NO. 34176

CENTER 1/4 COR.
SEC. 13, T5N, R68W
FOUND 2" ALUM. CAP
P.L.S. NO. 11989

W. 1/4 COR.
SEC. 18, T5N, R67W
FOUND 3 1/4" ALUM. CAP
P.L.S. NO. 10855

CENTER 1/4 COR.
SEC. 18, T5N, R67W
FOUND 2 1/2" ALUM. CAP
L.S. NO. 30462

SW. 1/16 COR.
SEC. 13, T5N, R68W
FOUND 2 1/2" ALUM. CAP
P.L.S. NO. 38512

SURFACE LOCATION: NAD 83
GROUND ELEVATION= 4938.9'
LATITUDE= 40.405008°
LONGITUDE= -104.942140°
LATITUDE= 40°24'18.029"
LONGITUDE= -104°56'31.703"
HEEL LOCATION: NAD 83
LATITUDE= 40.405010°
LONGITUDE= -104.945077°
LATITUDE= 40°24'18.037"
LONGITUDE= -104°56'42.277"
BOTTOM HOLE LOCATION: NAD 83
LATITUDE= 40.405017°
LONGITUDE= -104.991126°
LATITUDE= 40°24'18.061"
LONGITUDE= -104°59'28.054"

SW. COR.
SEC. 18, T5N, R67W
FOUND 3 1/4" ALUM. CAP
P.L.S. NO. 23520

S. 1/4 COR.
SEC. 18, T5N, R67W
FOUND 3 1/4" ALUM. CAP
L.S. NO. 22098

N 89°35'53" W 1368.87' (M)

N 89°26'08" W 1365.96' (M)

N 89°31'00" W 2751.58' (M)

N 89°57'56" E 2485.57' (M)

SW. COR.
SEC. 13, T5N, R68W
FOUND 2" ALUM. CAP
P.L.S. NO. 11989

W. 1/16 COR.
SEC. 13 & SEC. 24, T5N, R68W
FOUND 2" ALUM. CAP
P.L.S. NO. 11989

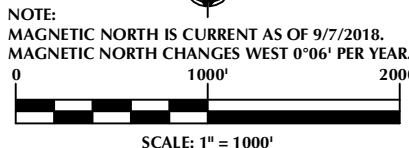
CERTIFICATE OF SURVEYOR:

THIS IS TO CERTIFY THAT THE ABOVE PLAT WAS PREPARED FROM FIELD NOTES OF ACTUAL SURVEYS MADE BY ME OR UNDER MY SUPERVISION AND THAT THE SAME ARE TRUE AND CORRECT TO THE BEST OF MY KNOWLEDGE AND BELIEF. THIS CERTIFICATE DOES NOT REPRESENT A LAND SURVEY PLAT OR IMPROVEMENT SURVEY PLAT AS DEFINED BY C.R.S. 38-5-102 AND CANNOT BE RELIED UPON TO DETERMINE OWNERSHIP.

Randall K. French
RANDALL K. FRENCH
PROFESSIONAL LAND SURVEYOR
COLORADO REGISTRATION NUMBER 38512

NOTICE:
ACCORDING TO COLORADO STATE LAW YOU MUST READ THIS NOTICE OF CERTIFICATION OF SURVEYOR. IF YOU DISCOVER ANY DEFECT IN NO EVENT MAY ANY ACTION BASED UPON ANY DEFECT IN THIS SURVEY BE COMMENCED MORE THAN TEN YEARS FROM THE DATE ON THE CERTIFICATION SHOWN HEREON.

21'38" 7°49'



NOTES:

- ▲ INDICATES SECTION CORNER.
- INDICATES CALCULATED CORNER.
- ELEVATION BASED ON NAVD88 (GEOID12B).
- BASIS OF BEARING DERIVED FROM COLORADO COORDINATE SYSTEM OF 1983 NORTH ZONE.
- ALL MEASURED DISTANCES ARE GRID.
COMBINED SCALE FACTOR: .99972603 CALCULATED FROM THE NE. CORNER OF SECTION 18, T5N, R67W.
- OPERATOR: PRESTON KNUTSEN / PDOP = 2.3.
- SEE ADDENDUM TO WELL LOCATION CERTIFICATE FOR EXISTING IMPROVEMENTS WITHIN 500' OF THE WELL PAD.
- WELL FOOTAGES ARE MEASURED AT RIGHT ANGLES TO THE SECTION LINES.
- THE BOTTOM OF HOLE BEARS S89°40'02"W, 12824' FROM THE HEEL LOCATION.
- NO. 2 AS SHOWN HEREON IS GOVERNMENT LOT 2 PER THE ORIGINAL GLO SURVEY.

WELL PAD - PROWANT 4-18HZ

PROWANT 18-5HZ
WELL LOCATION CERTIFICATE
711' FNL & 690' FWL LOT 2 (NWNW) (SURFACE)
LOCATED IN SECTION 18, T5N, R67W, 6TH P.M.
WELD COUNTY, COLORADO
713' FNL & 128' FEL NENE (HEEL)
LOCATED IN SECTION 13
743' FNL & 2170' FEL NWNE (BOTTOM)
LOCATED IN SECTION 15, T5N, R68W, 6TH P.M.
LARIMER COUNTY, COLORADO

Kerr-McGee Oil &
Gas Onshore L.P.
1099 18th Street
Denver, Colorado 80202



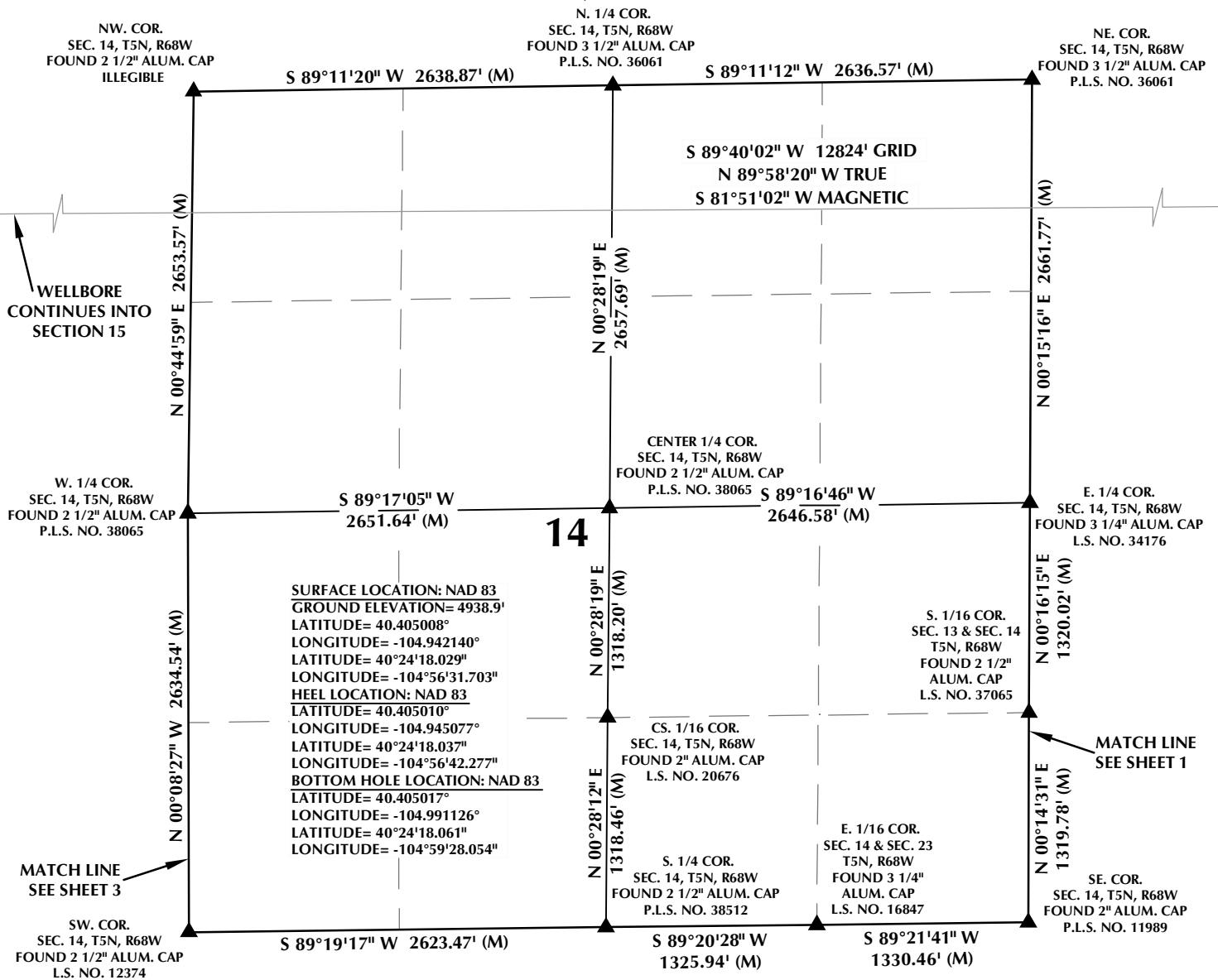
CONSULTING, LLC

SHERIDAN OFFICE
1095 Saberton Avenue
Sheridan, Wyoming 82801
Phone 307-674-0609

LOVELAND OFFICE
6706 North Franklin Avenue
Loveland, Colorado 80538
Phone 970-776-4331

DRAFTED BY:	LMO	CHECKED BY:	RKF	SHEET NO:
DATE DRAFTED:	10/12/18	DATE SURVEYED:	9/7/18	1
REVISED:	1/15/19	FILE NAME:	16-54	1 OF 3

T5N, R68W

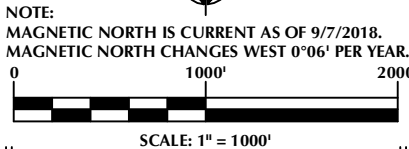
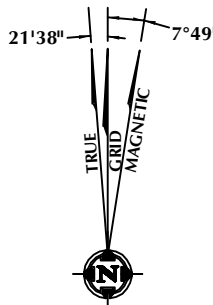


CERTIFICATE OF SURVEYOR:

THIS IS TO CERTIFY THAT THE ABOVE PLAT WAS PREPARED FROM FIELD NOTES OF ACTUAL SURVEYS MADE BY ME OR UNDER MY SUPERVISION AND THAT THE SAME ARE TRUE AND CORRECT TO THE BEST OF MY KNOWLEDGE AND BELIEF. THIS CERTIFICATE DOES NOT REPRESENT A LAND SURVEY PLAT OR IMPROVEMENT SURVEY PLAT AS DEFINED BY C.R.S. 18-5-102 AND CANNOT BE RELIED UPON TO DETERMINE OWNERSHIP.

Randall K. French
38512
1/15/19
PROFESSIONAL LAND SURVEYOR
COLORADO REGISTRATION NUMBER 38512

NOTICE:
ACCORDING TO COLORADO STATE LAW YOU MUST READ THIS CERTIFICATION OF SURVEYOR AND TAKE LEGAL ACTION BASED UPON ANY DEFECT IN THIS SURVEY WITHIN THREE YEARS AFTER YOU FIRST DISCOVER SUCH DEFECT. IN NO EVENT MAY ANY ACTION BASED UPON ANY DEFECT IN THIS SURVEY BE COMMENCED MORE THAN TEN YEARS FROM THE DATE ON THE CERTIFICATION SHOWN HEREON.



NOTES:

- ▲ INDICATES SECTION CORNER.
- INDICATES CALCULATED CORNER.
- ELEVATION BASED ON NAVD88 (GEOID12B).
- BASIS OF BEARING DERIVED FROM COLORADO COORDINATE SYSTEM OF 1983 NORTH ZONE.
- ALL MEASURED DISTANCES ARE GRID.
COMBINED SCALE FACTOR: .99972603 CALCULATED FROM THE NE. CORNER OF SECTION 18, T5N, R67W.
- OPERATOR: PRESTON KNUSTEN / PDOP = 2.3.
- SEE ADDENDUM TO WELL LOCATION CERTIFICATE FOR EXISTING IMPROVEMENTS WITHIN 500' OF THE WELL PAD.
- WELL FOOTAGES ARE MEASURED AT RIGHT ANGLES TO THE SECTION LINES.
- THE BOTTOM OF HOLE BEARS S89°40'02"W, 12824' FROM THE HEEL LOCATION.

WELL PAD - PROWANT 4-18HZ

PROWANT 18-5HZ
WELL LOCATION CERTIFICATE
711' FNL & 690' FWL LOT 2 (NWNW) (SURFACE)
LOCATED IN SECTION 18, T5N, R67W, 6TH P.M.
WELD COUNTY, COLORADO
713' FNL & 128' FEL NENE (HEEL)
LOCATED IN SECTION 13
743' FNL & 2170' FEL NENE (BOTTOM)
LOCATED IN SECTION 15, T5N, R68W, 6TH P.M.
LARIMER COUNTY, COLORADO

**Kerr-McGee Oil &
Gas Onshore L.P.**
1099 18th Street
Denver, Colorado 80202



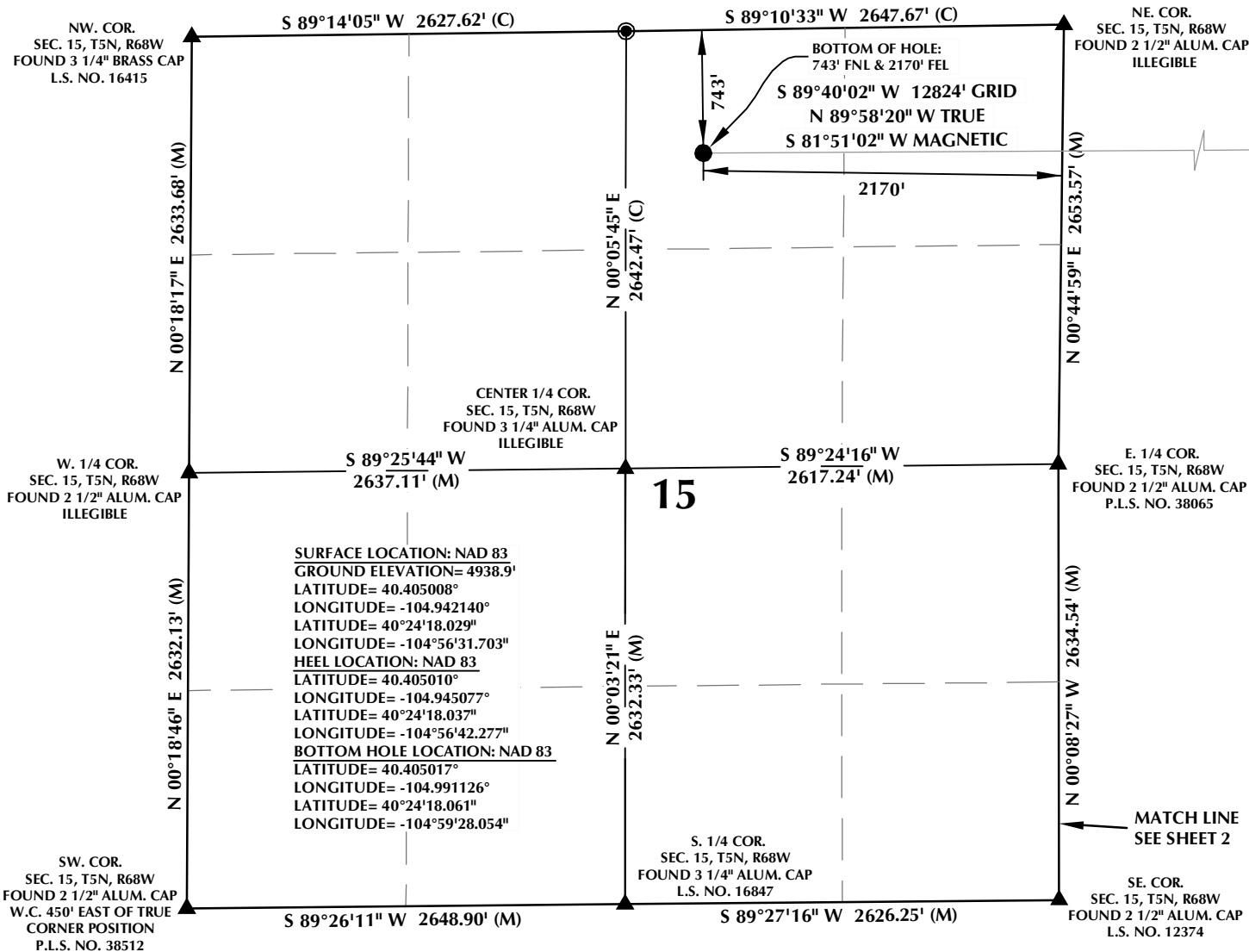
CONSULTING, LLC

SHERIDAN OFFICE
1095 Saberton Avenue
Sheridan, Wyoming 82801
Phone 307-674-0609

LOVELAND OFFICE
6706 North Franklin Avenue
Loveland, Colorado 80538
Phone 970-776-4331

DRAFTED BY:	LMO	CHECKED BY:	RKF	SHEET NO:
DATE DRAFTED:	10/12/18	DATE SURVEYED:	9/7/18	2
REVISED:	1/15/19	FILE NAME:	16-54	2 OF 3

T5N, R68W

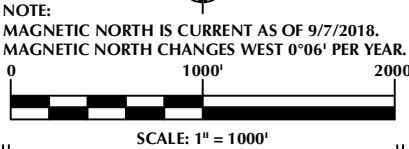
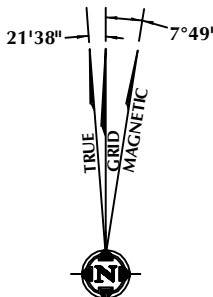


CERTIFICATE OF SURVEYOR:

THIS IS TO CERTIFY THAT THE ABOVE PLAT WAS PREPARED FROM FIELD NOTES OF ACTUAL SURVEYS MADE BY ME OR UNDER MY SUPERVISION AND THAT THE SAME ARE TRUE AND CORRECT TO THE BEST OF MY KNOWLEDGE AND BELIEF. THIS CERTIFICATE DOES NOT REPRESENT A LAND SURVEY PLAT OR IMPROVEMENT SURVEY PLAT AS DEFINED BY C.R.S. 38-5-102 AND CANNOT BE RELIED UPON TO DETERMINE OWNERSHIP.

Randall K. French
 RANDALL K. FRENCH
 PROFESSIONAL LAND SURVEYOR
 COLORADO REGISTRATION NUMBER 38512
 1/15/19

NOTICE:
 ACCORDING TO COLORADO STATE LAW YOU MUST READ THIS CERTIFICATE OF SURVEY AND TAKE LEGAL ACTION BASED UPON ANY DEFECT IN THIS SURVEY WITHIN THREE YEARS AFTER YOU FIRST DISCOVER SUCH DEFECT. IN NO EVENT MAY ANY ACTION BASED UPON ANY DEFECT IN THIS SURVEY BE COMMENCED MORE THAN TEN YEARS FROM THE DATE ON THE CERTIFICATION SHOWN HEREON.



NOTES:

- ▲ INDICATES SECTION CORNER.
- INDICATES CALCULATED CORNER.
- ELEVATION BASED ON NAVD88 (GEOID12B).
- BASIS OF BEARING DERIVED FROM COLORADO COORDINATE SYSTEM OF 1983 NORTH ZONE.
- ALL MEASURED DISTANCES ARE GRID.
- COMBINED SCALE FACTOR: .99972603 CALCULATED FROM THE NE. CORNER OF SECTION 18, T5N, R67W.
- OPERATOR: PRESTON KNUSTEN / PDOP = 2.3.
- SEE ADDENDUM TO WELL LOCATION CERTIFICATE FOR EXISTING IMPROVEMENTS WITHIN 500' OF THE WELL PAD.
- WELL FOOTAGES ARE MEASURED AT RIGHT ANGLES TO THE SECTION LINES.
- THE BOTTOM OF HOLE BEARS S89°40'02"W, 12824' FROM THE HEEL LOCATION.

WELL PAD - PROWANT 4-18HZ

PROWANT 18-5HZ
WELL LOCATION CERTIFICATE
 711' FNL & 690' FWL LOT 2 (NWNW) (SURFACE)
 LOCATED IN SECTION 18, T5N, R67W, 6TH P.M.
 WELD COUNTY, COLORADO
 713' FNL & 128' FEL NENE (HEEL)
 LOCATED IN SECTION 13
 743' FNL & 2170' FEL NENE (BOTTOM)
 LOCATED IN SECTION 15, T5N, R68W, 6TH P.M.
 LARIMER COUNTY, COLORADO

Kerr-McGee Oil & Gas Onshore L.P.
 1099 18th Street
 Denver, Colorado 80202



CONSULTING, LLC

SHERIDAN OFFICE
 1095 Saberton Avenue
 Sheridan, Wyoming 82801
 Phone 307-674-0609

LOVELAND OFFICE
 6706 North Franklin Avenue
 Loveland, Colorado 80538
 Phone 970-776-4331

DRAFTED BY:	LMO	CHECKED BY:	RKF	SHEET NO:
DATE DRAFTED:	10/12/18	DATE SURVEYED:	9/7/18	3
REVISED:	1/15/19	FILE NAME:	16-54	3 OF 3