



Kerr-McGee Oil & Gas Onshore LP

A subsidiary of Anadarko Petroleum Corporation

1099 18th Street
Denver, CO 80202
720-929-6000

September 25, 2019

Jeff Robbins
Director, Colorado Oil and Gas Conservation Commission
Department of Natural Resources – The Chancery Building
1120 Lincoln Street, Suite 801
Denver, CO 80203

Re: **30 Day Certification Letter - 318A.e**
PROWANT 18-2HZ (Doc No. 401913623)
Township 5 North, Range 67 West
Section 18: NWNW
Unit Acreage: 800 Acres
Proposed Spacing Unit:
05N68W SEC 12: SESE;
05N68W SEC 13: NENE;
05N67W SEC 07: S2S2;
05N67W SEC 08: S2S2;
05N67W SEC 09: SWSW;
05N67W SEC 16: NWNW;
05N67W SEC 17: N2N2;
05N67W SEC 18: N2N2
Weld County, Colorado

Dear Director Robbins:

Kerr-McGee Oil and Gas Onshore LP (“KMG”) hereby certifies that a thirty (30) day notice has been given by certified mail to all mineral owners in the proposed wellbore spacing unit. We have not received any objections to such well location, proposed spacing unit, or additional producing formation. KMG hereby respectfully requests approval of this boundary well.

If you have any questions or issues regarding this permit, please contact me at (720) 929-3242.

Sincerely,

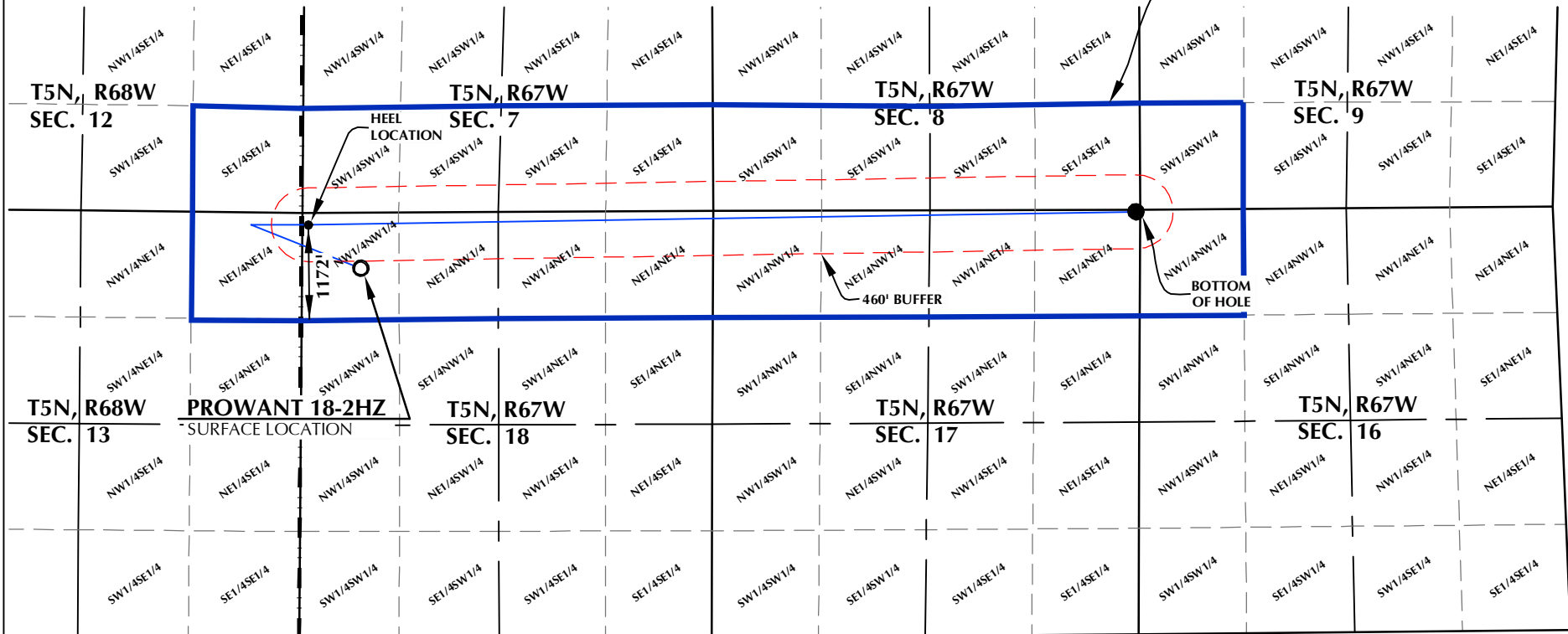
Kerr-McGee Oil and Gas Onshore LP

John Piekara

Sr. Regulatory Analyst

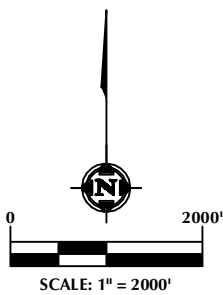
Enclosure

PROWANT 18-2HZ WELLBORE SPACING UNIT



SURFACE LOCATION: NAD 83
 GROUND ELEVATION= 4939.0'
 LATITUDE= 40.405058°
 LONGITUDE= -104.941992°
 LATITUDE= 40°24'18.208"
 LONGITUDE= -104°56'31.171"
HEEL LOCATION: NAD 83
 LATITUDE= 40.406552°
 LONGITUDE= -104.944320°
 LATITUDE= 40°24'23.587"
 LONGITUDE= -104°56'39.553"
BOTTOM HOLE LOCATION: NAD 83
 LATITUDE= 40.406821°
 LONGITUDE= -104.907371°
 LATITUDE= 40°24'24.556"
 LONGITUDE= -104°54'26.536"

LARIMER COUNTY
 WELD COUNTY



DISTANCE FROM COMPLETED PORTION OF WELLBORE TO NEAREST UNIT BOUNDARY= 1172'

WELL PAD - PROWANT 4-18HZ

**PROWANT 18-2HZ
 WELLBORE SPACING UNIT**
 693' FNL & 731' FWL LOT 2 (NWNW) (SURFACE)
 149' FNL & 75' FWL LOT 2 (NWNW) (HEEL)
 LOCATED IN SECTION 18
 21' FNL & 51' FEL NENE (BOTTOM)
 LOCATED IN SECTION 17
 T5N, R67W, 6TH P.M.
 WELD COUNTY, COLORADO

**Kerr-McGee Oil &
 Gas Onshore L.P.**
 1099 18th Street
 Denver, Colorado 80202



CONSULTING, LLC

SHERIDAN OFFICE
 1095 Saberton Avenue
 Sheridan, Wyoming 82801
 Phone 307-674-0609

LOVELAND OFFICE
 6706 North Franklin Avenue
 Loveland, Colorado 80538
 Phone 970-776-4331

DRAFTED BY: LMO	CHECKED BY: WJG
DATE DRAFTED: 10/12/18	DATE SURVEYED: 9/7/18
REVISED: 10/22/18	FILE NAME: 16-54

NOTES:

1. DRAWING LATITUDE AND LONGITUDE COORDINATES ARE NAD 83 (2011)(EPOCH:2010).
2. ELEVATION BASED ON NAVD88 (GEOID12B).
3. BASIS OF BEARING DERIVED FROM COLORADO COORDINATE SYSTEM OF 1983 NORTH ZONE.
4. ALL MEASURED DISTANCES ARE GRID. COMBINED SCALE FACTOR: .99972603 CALCULATED FROM THE NE. CORNER OF SECTION 18, T5N, R67W.