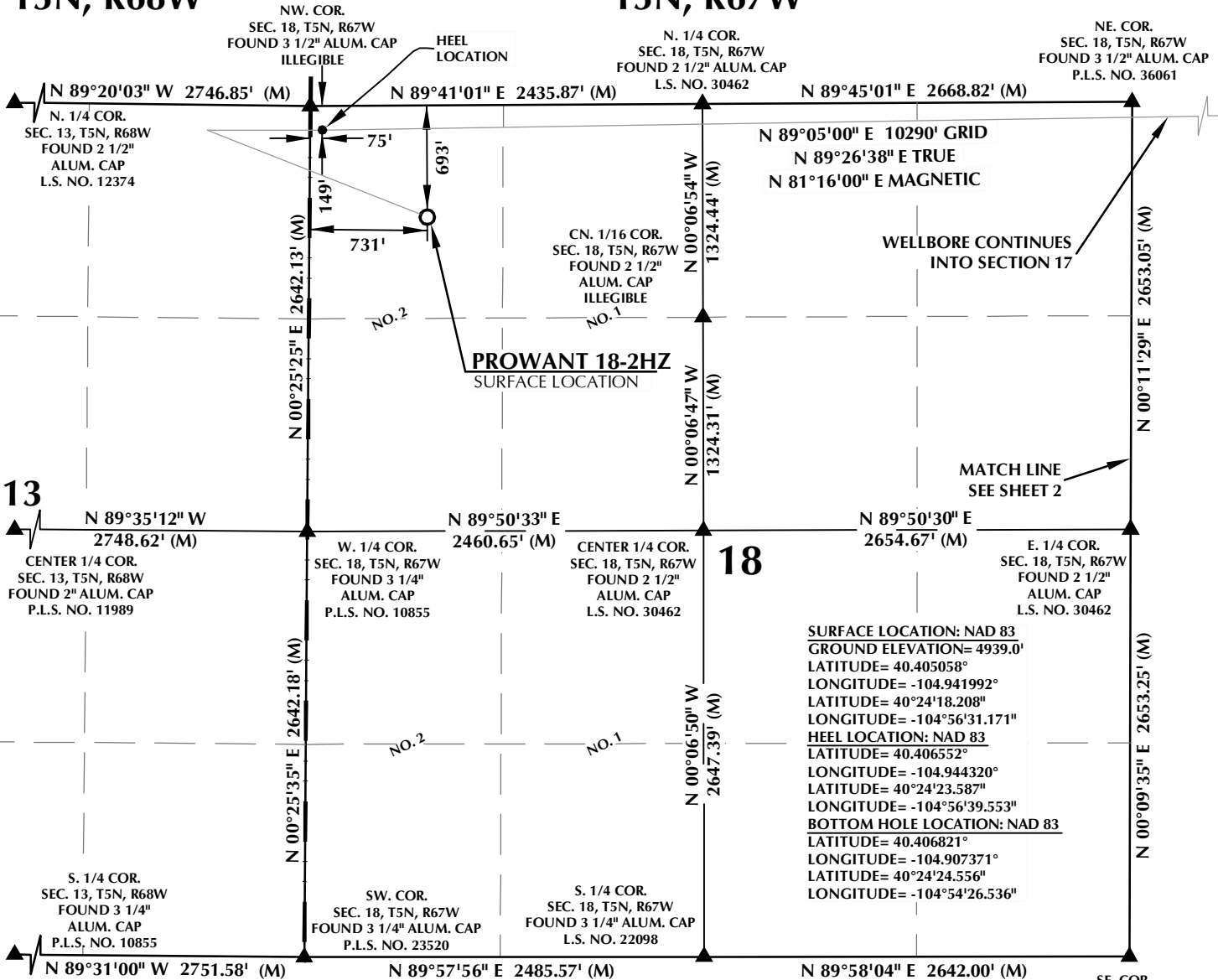


T5N, R68W

T5N, R67W



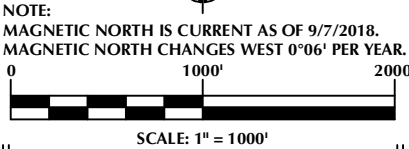
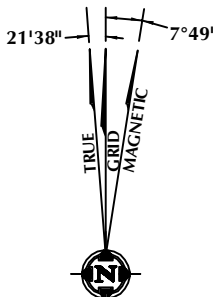
SURFACE LOCATION: NAD 83
 GROUND ELEVATION= 4939.0'
 LATITUDE= 40.405058°
 LONGITUDE= -104.941992°
 LATITUDE= 40°24'18.208"
 LONGITUDE= -104°56'31.171"
HEEL LOCATION: NAD 83
 LATITUDE= 40.406552°
 LONGITUDE= -104.944320°
 LATITUDE= 40°24'23.587"
 LONGITUDE= -104°56'39.553"
BOTTOM HOLE LOCATION: NAD 83
 LATITUDE= 40.406821°
 LONGITUDE= -104.907371°
 LATITUDE= 40°24'24.556"
 LONGITUDE= -104°54'26.536"

CERTIFICATE OF SURVEYOR:

THIS IS TO CERTIFY THAT THE ABOVE PLAT WAS PREPARED FROM FIELD NOTES OF ACTUAL SURVEY MADE BY ME OR UNDER MY SUPERVISION AND IS THE SAME AS TRUE AND CORRECT TO THE BEST OF MY KNOWLEDGE AND BELIEF. THIS CERTIFICATE DOES NOT REPRESENT A LAND SURVEY PLAT OR IMPROVEMENT SURVEY PLAT AS DEFINED BY C.R.S. § 251-302 AND CANNOT BE RELIED UPON TO DETERMINE OWNERSHIP.

Wrangler Grohs
 38603
 WRANGLER GROHS
 PROFESSIONAL LAND SURVEYOR
 COLORADO REGISTRATION NUMBER: 38603
 10/22/18

NOTICE:
 ACCORDING TO COLORADO STATE LAW YOU MUST COMMENCE ANY LEGAL ACTION BASED UPON ANY DEFECT IN THIS SURVEY WITHIN THREE YEARS AFTER YOU FIRST DISCOVER SUCH DEFECT. IN NO EVENT MAY ANY ACTION BASED UPON ANY DEFECT IN THIS SURVEY BE COMMENCED MORE THAN TEN YEARS FROM THE DATE ON THE CERTIFICATION SHOWN HEREON.



NOTES:

- ▲ INDICATES SECTION CORNER.
- INDICATES CALCULATED CORNER.
- ELEVATION BASED ON NAVD88 (GEOID12B).
- BASIS OF BEARING DERIVED FROM COLORADO COORDINATE SYSTEM OF 1983 NORTH ZONE.
- ALL MEASURED DISTANCES ARE GRID.
COMBINED SCALE FACTOR: .99972603 CALCULATED FROM THE NE. CORNER OF SECTION 18, T5N, R67W.
- OPERATOR: PRESTON KNUTSEN / PDOP = 2.2.
- SEE ADDENDUM TO WELL LOCATION CERTIFICATE FOR EXISTING IMPROVEMENTS WITHIN 500' OF THE WELL PAD.
- WELL FOOTAGES ARE MEASURED AT RIGHT ANGLES TO THE SECTION LINES.
- THE BOTTOM OF HOLE BEARS N89°05'00"E, 10290' FROM THE HEEL LOCATION.
- NO. 1 & NO. 2 AS SHOWN HEREON ARE GOVERNMENT LOTS 1 & 2 PER THE ORIGINAL GLO SURVEY.

WELL PAD - PROWANT 4-18HZ

PROWANT 18-2HZ
WELL LOCATION CERTIFICATE
 693' FNL & 731' FWL LOT 2 (NWNW) (SURFACE)
 149' FNL & 75' FWL LOT 2 (NWNW) (HEEL)
 LOCATED IN SECTION 18
 21' FNL & 51' FEL NENE (BOTTOM)
 LOCATED IN SECTION 17
 T5N, R67W, 6TH P.M.
 WELD COUNTY, COLORADO

Kerr-McGee Oil & Gas Onshore L.P.
 1099 18th Street
 Denver, Colorado 80202



CONSULTING, LLC
 SHERIDAN OFFICE
 1095 Saberton Avenue
 Sheridan, Wyoming 82801
 Phone 307-674-0609
 LOVELAND OFFICE
 6706 North Franklin Avenue
 Loveland, Colorado 80538
 Phone 970-776-4331

DRAFTED BY: LMO	CHECKED BY: WJG	SHEET NO: 1 1 OF 2
DATE DRAFTED: 10/12/18	DATE SURVEYED: 9/7/18	
REVISED: 10/22/18	FILE NAME: 16-54	

K:\AMADARKO\2016\2016_54_PROWANT_T5N_R67W_SEC_18\FPLATS\PROWANT_4-18HZ\FWLOT_2.dwg, 10/19/2018 3:05:08 PM, 1/58

T5N, R67W

NW. COR.
SEC. 17, T5N, R67W
FOUND 3 1/2" ALUM. CAP
P.L.S. NO. 36061

N. 1/4 COR.
SEC. 17, T5N, R67W
FOUND 3 1/4" ALUM. CAP
ILLEGIBLE

BOTTOM OF HOLE:
21' FNL & 51' FEL

NE. COR.
SEC. 17, T5N, R67W
FOUND 3 1/2" ALUM. CAP
P.L.S. NO. 36061

S 89°49'59" W 2696.15' (M)

S 89°54'27" W 2612.90' (M)

N 89°05'00" E 10290' GRID
N 89°26'38" E TRUE
N 81°16'00" E MAGNETIC

N 00°11'29" E 2653.05' (M)

N 00°39'35" E
2648.35' (M)

N 00°14'51" E 2639.96' (M)

W. 1/4 COR.
SEC. 17, T5N, R67W
FOUND 2 1/2" ALUM. CAP
L.S. NO. 30462

S 89°43'40" W
2674.54' (M)

S 89°43'44" W
2632.02' (M)

E. 1/4 COR.
SEC. 17, T5N, R67W
FOUND 2 1/2" ALUM. CAP
ILLEGIBLE

17

CENTER 1/4 COR.
SEC. 17, T5N, R67W
FOUND 3 1/4" ALUM. CAP
L.S. NO. 33642

SURFACE LOCATION: NAD 83
GROUND ELEVATION= 4939.0'
LATITUDE= 40.405058°
LONGITUDE= -104.941992°
LATITUDE= 40°24'18.208"
LONGITUDE= -104°56'31.171"
HEEL LOCATION: NAD 83
LATITUDE= 40.406552°
LONGITUDE= -104.944320°
LATITUDE= 40°24'23.587"
LONGITUDE= -104°56'39.553"
BOTTOM HOLE LOCATION: NAD 83
LATITUDE= 40.406821°
LONGITUDE= -104.907371°
LATITUDE= 40°24'24.556"
LONGITUDE= -104°54'26.536"

N 00°39'41" E
2646.91' (C)

N 00°14'36" E 2640.00' (M)

MATCH LINE
SEE SHEET 1

SW. COR.
SEC. 17, T5N, R67W
FOUND 3 1/4" ALUM. CAP
L.S. NO. 7242

S 89°35'05" W 5302.83' (M)

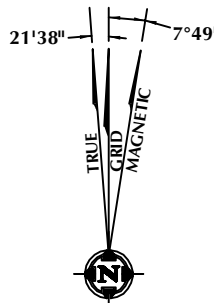
SE. COR.
SEC. 17, T5N, R67W
FOUND 2 1/2" ALUM. CAP
P.L.S. NO. 9644

CERTIFICATE OF SURVEYOR:

THIS IS TO CERTIFY THAT THE ABOVE PLAT WAS PREPARED FROM FIELD NOTES OF ACTUAL SURVEY MADE BY ME OR UNDER MY SUPERVISION AND IS TRUE AND CORRECT TO THE BEST OF MY KNOWLEDGE AND BELIEF. THIS CERTIFICATE DOES NOT REPRESENT A LAND SURVEY PLAT OR IMPROVEMENT SURVEY PLAT AS DEFINED BY C.R.S. § 251-302 AND CANNOT BE RELIED UPON TO DETERMINE OWNERSHIP.

Wrangler Grohs
38603
PROFESSIONAL LAND SURVEYOR
10/22/18
COLORADO REGISTRATION NUMBER: 38603

NOTICE:
ACCORDING TO COLORADO STATE LAW YOU MUST COMMENCE LEGAL ACTION BASED UPON ANY DEFECT IN THIS SURVEY WITHIN THREE YEARS AFTER YOU FIRST DISCOVER SUCH DEFECT. IN NO EVENT MAY ANY ACTION BASED UPON ANY DEFECT IN THIS SURVEY BE COMMENCED MORE THAN TEN YEARS FROM THE DATE ON THE CERTIFICATION SHOWN HEREON.



SCALE: 1" = 1000'

NOTES:

- ▲ INDICATES SECTION CORNER.
- INDICATES CALCULATED CORNER.
- ELEVATION BASED ON NAVD88 (GEOID12B).
- BASIS OF BEARING DERIVED FROM COLORADO COORDINATE SYSTEM OF 1983 NORTH ZONE.
- ALL MEASURED DISTANCES ARE GRID. COMBINED SCALE FACTOR: .99972603 CALCULATED FROM THE NE. CORNER OF SECTION 18, T5N, R67W.
- OPERATOR: PRESTON KNUITSEN / PDOP = 2.2.
- SEE ADDENDUM TO WELL LOCATION CERTIFICATE FOR EXISTING IMPROVEMENTS WITHIN 500' OF THE WELL PAD.
- WELL FOOTAGES ARE MEASURED AT RIGHT ANGLES TO THE SECTION LINES.
- THE BOTTOM OF HOLE BEARS N89°05'00"E, 10290' FROM THE HEEL LOCATION.

WELL PAD - PROWANT 4-18HZ

PROWANT 18-2HZ
WELL LOCATION CERTIFICATE
693' FNL & 731' FWL LOT 2 (NWNW) (SURFACE)
149' FNL & 75' FWL LOT 2 (NWNW) (HEEL)
LOCATED IN SECTION 18
21' FNL & 51' FEL NENE (BOTTOM)
LOCATED IN SECTION 17
T5N, R67W, 6TH P.M.
WELD COUNTY, COLORADO

**Kerr-McGee Oil &
Gas Onshore L.P.**
1099 18th Street
Denver, Colorado 80202



CONSULTING, LLC

SHERIDAN OFFICE
1095 Saberton Avenue
Sheridan, Wyoming 82801
Phone 307-674-0609

LOVELAND OFFICE
6706 North Franklin Avenue
Loveland, Colorado 80538
Phone 970-776-4331

DRAFTED BY:	LMO	CHECKED BY:	WJG	SHEET NO: 2 2 OF 2
DATE DRAFTED:	10/12/18	DATE SURVEYED:	9/7/18	
REVISED:	10/22/18	FILE NAME:	16-54	