



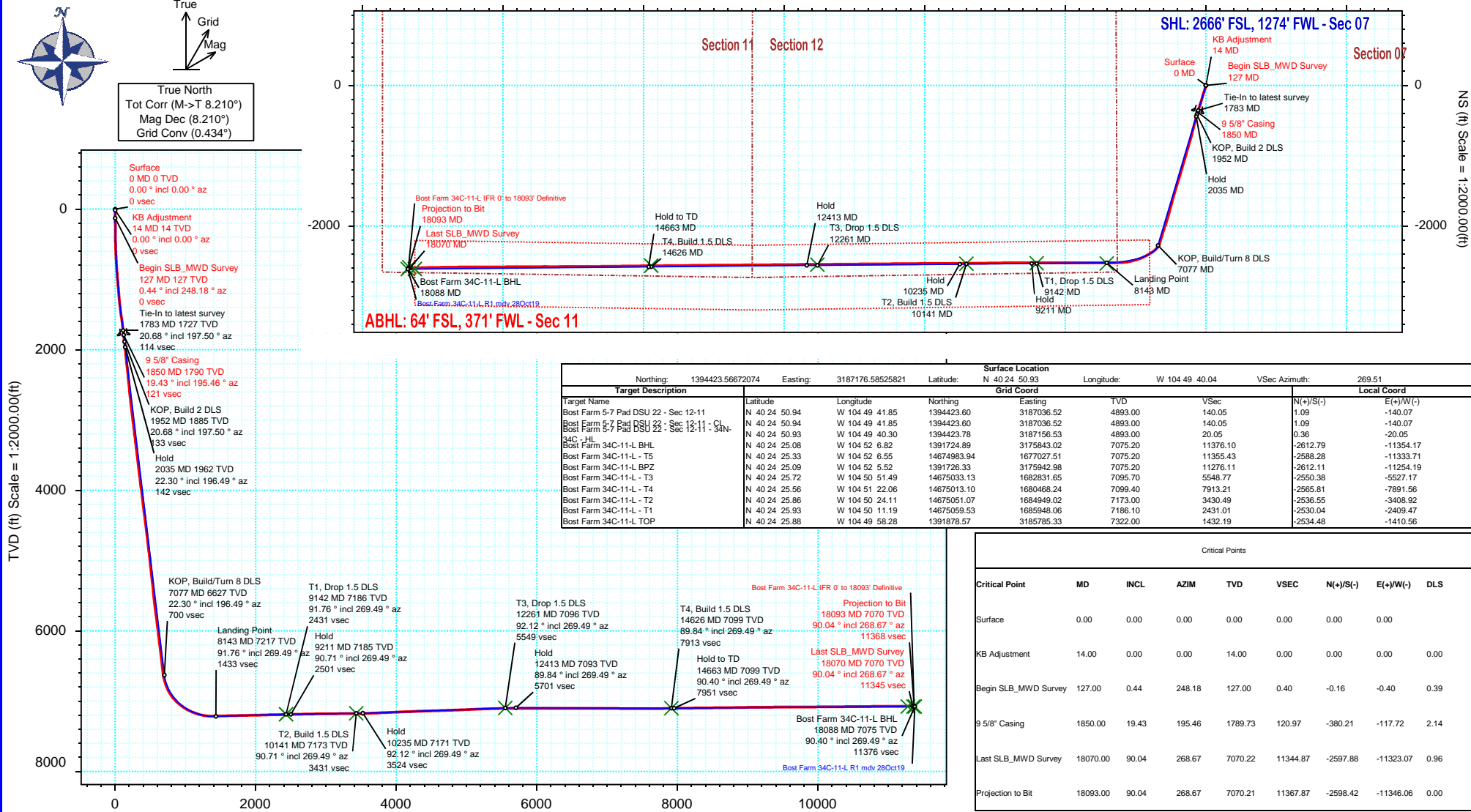
SRC Energy

Schlumberger

Borehole:	Well:	Field:	Structure:
Original Hole	Bost Farm 34C-11-L	CO, Weld County (NAD 83 NZ) - SRC	SRC Energy 07-05N-66W (Bost Farm 5-7 Pad DSU 20)

Gravity & Magnetic Parameters				Surface Location				Miscellaneous			
Model:	HDGM 2019	Dip:	66.754°	Date:	28-Oct-2019	Lat:	N 40 24 50.93	Northing:	1394423.57ftUS	Grid Conv:	0.4343°
MagDec:	8.21°	FS:	52171.466nT	Gravity FS:	999.024mgN (9.80665 Based)	Lon:	W 104 49 40.04	Easting:	3187176.59ftUS	Scale Fact:	0.9999609
								Slot:			
								Plan:			
								TVD Ref:			
								KB 20ft(4893ft above MSL)			

Final Pva



Bost Farm 34C-11-L IFR 0' to 18093' Definitive Survey Geodetic Report

(Def Survey)

Report Date: December 03, 2019 - 01:56 PM
Client: SRC Energy
Field: CO, Weld County (NAD 83 NZ) - SRC
Structure / Slot: SRC Energy 07-05N-66W (Bost Farm 5-7 Pad DSU 20) / Bost Farm 34C-11-L
Well: Bost Farm 34C-11-L
Borehole: Original Hole
UWI / API#: Unknown / 05-123-50257
Survey Name: Bost Farm 34C-11-L IFR 0' to 18093' Definitive
Survey Date: May 29, 2019
Tort / AHD / DDI / ERD Ratio: 217.897 ° / 13122.996 ft / 6.856 / 1.819
Coordinate Reference System: NAD83 Colorado State Plane, Northern Zone, US Feet
Location Lat / Long: N 40° 24' 50.92920", W 104° 49' 40.04400"
Location Grid N/E Y/X: N 1394423.567 ftUS, E 3187176.585 ftUS
CRS Grid Convergence Angle: 0.4343 °
Grid Scale Factor: 0.9999609
Version / Patch: 2.10.787.0

Survey / DLS Computation: Minimum Curvature / Lubinski
Vertical Section Azimuth: 269.510 ° (True North)
Vertical Section Origin: 0.000 ft, 0.000 ft
TVD Reference Datum: KB 20ft
TVD Reference Elevation: 4893.000 ft above MSL
Seabed / Ground Elevation: 4873.000 ft above MSL
Magnetic Declination: 8.210 °
Total Gravity Field Strength: 999.0244mgn (9.80665 Based)
Gravity Model: GARM
Total Magnetic Field Strength: 52171.466 nT
Magnetic Dip Angle: 66.754 °
Declination Date: October 28, 2019
Magnetic Declination Model: HDGM 2019
North Reference: True North
Grid Convergence Used: 0.0000 °
Total Corr Mag North-True North: 8.2097 °
Local Coord Referenced To: Well Head

Comments	MD (ft)	Incl (°)	Azim True (°)	TVD (ft)	VSEC (ft)	NS (ft)	EW (ft)	DLS (°/100ft)	Northing (ftUS)	Easting (ftUS)	Latitude (°)	Longitude (°)
Surface	0.00	0.00	0.00	0.00	0.00	0.00	0.00	N/A	1394423.57	3187176.59	40.414147	-104.827790
KB Adjustment	14.00	0.00	0.00	14.00	0.00	0.00	0.00	0.00	1394423.57	3187176.59	40.414147	-104.827790
Begin												
SLB_MWD	127.00	0.44	248.18	127.00	0.40	-0.16	-0.40	0.39	1394423.40	3187176.18	40.414147	-104.827791
Survey												
	215.00	1.68	207.42	214.98	1.32	-1.43	-1.31	1.56	1394422.12	3187175.29	40.414143	-104.827795
	307.00	3.31	179.70	306.90	1.96	-5.29	-1.92	2.16	1394418.27	3187174.71	40.414132	-104.827797
	397.00	4.73	192.30	396.67	2.79	-11.51	-2.69	1.85	1394412.04	3187173.98	40.414115	-104.827800
	487.00	6.14	193.98	486.27	4.82	-19.81	-4.65	1.58	1394403.73	3187172.09	40.414093	-104.827807
	577.00	7.64	196.71	575.61	7.79	-30.21	-7.53	1.71	1394393.30	3187169.28	40.414064	-104.827817
	667.00	9.15	195.34	664.65	11.51	-42.84	-11.14	1.69	1394380.65	3187165.77	40.414029	-104.827830
	757.00	10.52	198.12	753.32	16.08	-57.55	-15.59	1.61	1394365.90	3187161.43	40.413989	-104.827846
	847.00	12.06	199.53	841.58	21.93	-74.22	-21.29	1.74	1394349.19	3187155.86	40.413943	-104.827866
	937.00	13.08	200.15	929.42	28.73	-92.64	-27.94	1.14	1394330.72	3187149.35	40.413893	-104.827890
	1027.00	14.18	198.43	1016.89	35.90	-112.66	-34.94	1.30	1394310.65	3187142.50	40.413838	-104.827915
	1117.00	15.38	196.67	1103.91	43.00	-134.55	-41.85	1.42	1394288.70	3187135.76	40.413778	-104.827940
	1207.00	17.23	194.42	1190.28	49.95	-158.90	-48.59	2.17	1394264.31	3187129.20	40.413711	-104.827964
	1297.00	19.18	196.27	1275.78	57.64	-186.00	-56.05	2.26	1394237.15	3187121.95	40.413636	-104.827991
	1387.00	21.12	196.53	1360.26	66.65	-215.74	-64.81	2.16	1394207.35	3187113.42	40.413555	-104.828023
	1477.00	22.85	196.93	1443.72	76.63	-248.01	-74.51	1.93	1394175.01	3187103.96	40.413466	-104.828058
	1567.00	23.07	198.87	1526.59	87.71	-281.41	-85.30	0.88	1394141.53	3187093.42	40.413375	-104.828096
	1657.00	22.36	199.05	1609.60	99.28	-314.28	-96.59	0.79	1394108.58	3187082.38	40.413284	-104.828137
	1747.00	21.21	198.16	1693.18	110.21	-345.93	-107.26	1.33	1394076.85	3187071.96	40.413197	-104.828175
	1783.00	20.68	197.50	1726.80	114.26	-358.18	-111.20	1.61	1394064.57	3187068.11	40.413164	-104.828189
9 5/8" Casing	1850.00	19.43	195.46	1789.73	120.97	-380.21	-117.72	2.14	1394042.49	3187061.75	40.413103	-104.828213
	1869.00	19.08	194.83	1807.67	122.66	-386.25	-119.36	2.14	1394036.44	3187060.16	40.413087	-104.828219
	1961.00	21.50	196.21	1893.96	131.48	-416.98	-127.92	2.68	1394005.64	3187051.84	40.413002	-104.828249
	2055.00	22.02	196.17	1981.26	141.48	-450.45	-137.63	0.55	1393972.11	3187042.38	40.412911	-104.828284
	2148.00	21.68	194.96	2067.58	151.06	-483.79	-146.92	0.61	1393938.70	3187033.34	40.412819	-104.828318
	2240.00	22.02	194.17	2152.97	159.95	-516.93	-155.53	0.49	1393905.49	3187024.98	40.412728	-104.828349
	2334.00	22.14	194.29	2240.07	168.93	-551.18	-164.22	0.14	1393871.18	3187016.56	40.412634	-104.828380
	2428.00	22.03	195.10	2327.18	178.18	-585.37	-173.18	0.34	1393836.93	3187007.85	40.412540	-104.828412
	2521.00	22.01	194.07	2413.39	187.25	-619.11	-181.96	0.42	1393803.12	3186999.33	40.412448	-104.828443
	2613.00	21.82	193.10	2498.75	195.60	-652.48	-190.03	0.44	1393769.69	3186991.52	40.412356	-104.828472
	2706.00	22.19	195.03	2584.97	204.36	-686.28	-198.50	0.87	1393735.83	3186983.30	40.412263	-104.828503
	2801.00	23.09	193.66	2672.65	213.72	-721.71	-207.55	1.10	1393700.34	3186974.52	40.412166	-104.828535
	2893.00	22.46	196.87	2757.48	223.37	-756.06	-216.91	1.51	1393665.92	3186965.42	40.412072	-104.828569
	2986.00	22.67	194.92	2843.36	233.43	-790.38	-226.68	0.84	1393631.53	3186955.91	40.411977	-104.828604
	3079.00	23.02	196.70	2929.07	243.57	-825.11	-236.52	0.83	1393596.72	3186946.33	40.411882	-104.828639
	3172.00	22.55	196.45	3014.81	254.14	-859.63	-246.80	0.52	1393562.12	3186936.32	40.411787	-104.828676
	3264.00	20.75	196.35	3100.32	264.00	-892.19	-256.38	1.96	1393529.49	3186926.98	40.411698	-104.828711
	3358.00	22.61	196.77	3187.66	274.19	-925.47	-266.28	1.99	1393496.14	3186917.33	40.411607	-104.828746
	3450.00	22.87	196.17	3272.51	284.56	-959.58	-276.37	0.38	1393461.96	3186907.51	40.411513	-104.828782
	3544.00	22.69	196.62	3359.18	295.13	-994.49	-286.64	0.27	1393426.97	3186897.51	40.411417	-104.828819
	3637.00	22.71	196.64	3444.98	305.70	-1028.88	-296.91	0.02	1393392.51	3186887.50	40.411323	-104.828856
	3730.00	22.72	197.12	3530.76	316.42	-1063.24	-307.34	0.20	1393358.07	3186877.33	40.411229	-104.828894
	3823.00	21.99	194.81	3616.78	326.45	-1097.24	-317.08	1.23	1393324.00	3186867.85	40.411135	-104.828929
	3915.00	22.99	196.49	3701.78	336.24	-1131.12	-326.58	1.29	1393290.05	3186858.60	40.411042	-104.828963
	4009.00	23.08	195.53	3788.28	346.68	-1166.48	-336.72	0.41	1393254.62	3186848.73	40.410945	-104.828999
	4102.00	22.97	195.96	3873.88	356.85	-1201.49	-346.59	0.22	1393219.54	3186839.13	40.410849	-104.829035
	4195.00	23.11	197.03	3959.46	367.49	-1236.39	-356.93	0.47	1393184.56	3186829.06	40.410753	-104.829072
	4287.00	22.67	197.34	4044.21	378.35	-1270.57	-367.50	0.50	1393150.30	3186818.74	40.410659	-104.829110
	4381.00	21.73	197.46	4131.24	389.26	-1304.46	-378.12	1.00	1393116.33	3186808.38	40.410566	-104.829148
	4473.00	22.94	197.16	4216.34	399.95	-1337.84	-388.52	1.32	1393082.87	3186798.23	40.410475	-104.829185
	4567.00	22.84	196.87	4302.94	410.94	-1372.81	-399.22	0.16	1393047.83	3186787.80	40.410379	-104.829224
	4659.00	22.73	196.37	4387.76	421.43	-1406.95	-409.41	0.24	1393013.62	3186777.87	40.410285	-104.829260
	4752.00	22.86	196.98	4473.49	432.06	-1441.46	-419.75	0.29	1392979.02	3186767.79	40.410190	-104.829297
	4845.00	22.38	196.76	4559.34	442.73	-1475.69	-430.13	0.52	1392944.72	3186757.67	40.410096	-104.829335
	4937.00	22.58	195.88	4644.35	452.91	-1509.45	-440.01	0.43	1392910.89	3186748.04	40.410004	-104.829370
	5030.00	22.78	195.91	4730.16	463.02	-1543.94	-449.83	0.22	1392876.33	3186738.49	40.409909	-104.829405
	5124.00	23.10	197.05	4816.72	473.72	-1579.07	-460.23	0.58	1392841.12	3186728.36	40.409813	-104.829443
	5218.00	21.86	196.96	4903.58	484.52	-1613.44	-470.74	1.32	1392806.67	3186718.11	40.409718	-104.829480
	5311.00	22.35	192.96	4989.75	493.83	-1647.23	-479.76	1.70	1392772.81	3186709.35	40.409626	-104.829513
	5406.00	21.50	195.23	5077.88	502.75	-1681.63	-488.38	1.26	1392738.35	3186700.98	40.409531	-104.829544
	5501.00	22.23	196.35	5166.04	512.67	-1715.68	-498.01	0.88	1392704.24	3186691.61	40.409438	-104.829578
	5596.00	21.90	196.26	5254.09	522.98	-1749.93	-508.03	0.35	1392669.91	3186681.85	40.409344	-104.829614
	5689.00	21.60	193.78	5340.47	532.20	-1783.20	-516.97	1.04	1392636.57	3186673.77	40.409252	-104.829646
	5784.00	21.29	195.16	5512.66	549.65	-1848.69	-533.86	0.32	1392570.96	3186656.17	40.409073	-104.829707
	5868.00	21.69	196.14	5600.13	559.23	-1881.85	-543.15	0.57	1392537.73	3186647.73	40.408982	-104.829740
	6060.00	21.77	199.18	5685.59	569.84	-1914.30	-553.49	1.23	1392505.21	3186637.65	40.408892	-104.829777
	6152.00	21.62	198.46	5771.07	581.08	-1946.49	-564.46	0.33	1392472.94	3186626.92	40.408804	-104.829817
	6246.00	21.02	197.98	5858.64	592.05	-1978.95	-575.14	0.66	1392440.40	3186616.48	40.408715	-104.829855
	6341.00	20.69	199.15	5947.42	603.09	-2011.01	-585.91	0.56	1392408.26	3186605.96	40.408627	-104.829

Comments	MD (ft)	Incl (°)	Azim True (°)	TVD (ft)	VSEC (ft)	NS (ft)	EW (ft)	DLS (°/100ft)	Northing (ftUS)	Easting (ftUS)	Latitude (°)	Longitude (°)
	6905.00	21.18	196.81	6471.68	666.35	-2209.57	-647.47	0.34	1392209.24	3186545.91	40.408082	-104.830115
	6998.00	21.91	195.19	6558.18	676.03	-2242.40	-656.88	1.01	1392176.34	3186536.75	40.407992	-104.830149
	7090.00	22.27	202.78	6643.45	687.56	-2275.04	-668.13	3.13	1392143.62	3186525.75	40.407902	-104.830189
	7185.00	25.48	222.86	6730.45	708.74	-2306.68	-689.04	9.15	1392111.82	3186505.08	40.407815	-104.830264
	7278.00	30.11	227.03	6812.71	739.69	-2337.26	-719.73	5.40	1392081.01	3186474.62	40.407731	-104.830374
	7371.00	36.66	234.24	6890.35	779.63	-2369.44	-759.39	8.22	1392048.54	3186435.21	40.407643	-104.830517
	7465.00	44.35	239.90	6961.79	831.20	-2402.37	-810.68	9.06	1392015.22	3186384.17	40.407553	-104.830701
	7557.00	51.29	244.00	7023.54	891.64	-2434.28	-870.85	8.23	1391982.85	3186324.25	40.407465	-104.830917
	7649.00	56.38	249.05	7077.84	959.99	-2463.75	-938.96	7.09	1391952.88	3186256.37	40.407384	-104.831162
	7742.00	62.77	253.82	7124.93	1036.19	-2489.15	-1014.94	8.17	1391926.90	3186180.58	40.407314	-104.831434
	7834.00	69.47	259.98	7162.18	1118.21	-2508.08	-1096.80	9.51	1391907.35	3186098.87	40.407263	-104.831728
	7927.00	74.85	265.60	7190.69	1206.07	-2519.12	-1184.57	8.16	1391895.65	3186011.20	40.407232	-104.832043
	8019.00	83.24	269.25	7208.16	1296.23	-2523.13	-1274.70	9.92	1391890.95	3185921.10	40.407221	-104.832367
	8113.00	92.01	269.88	7212.05	1390.06	-2523.84	-1368.53	9.35	1391889.53	3185827.29	40.407219	-104.832704
	8205.00	91.10	270.54	7209.55	1482.02	-2523.50	-1460.49	1.22	1391889.17	3185735.32	40.407220	-104.833034
	8298.00	91.15	270.12	7207.73	1574.99	-2522.97	-1553.47	0.45	1391889.00	3185642.35	40.407222	-104.833368
	8391.00	91.33	269.66	7205.72	1667.97	-2523.14	-1646.45	0.53	1391888.12	3185549.38	40.407221	-104.833702
	8484.00	91.20	270.34	7203.66	1760.94	-2523.14	-1739.43	0.74	1391887.41	3185456.41	40.407221	-104.834036
	8577.00	91.33	269.93	7201.61	1853.91	-2522.93	-1832.40	0.46	1391886.93	3185363.43	40.407222	-104.834370
	8670.00	91.38	269.57	7199.41	1946.88	-2523.33	-1925.38	0.39	1391885.82	3185270.47	40.407221	-104.834704
	8763.00	91.38	269.94	7197.17	2039.86	-2523.73	-2018.35	0.40	1391884.71	3185177.51	40.407219	-104.835037
	8856.00	91.29	270.02	7195.00	2132.83	-2523.76	-2111.32	0.13	1391883.98	3185084.54	40.407219	-104.835371
	8949.00	91.14	269.69	7193.03	2225.81	-2524.00	-2204.30	0.39	1391883.04	3184991.57	40.407219	-104.835705
	9041.00	90.94	270.29	7191.36	2317.79	-2524.01	-2296.29	0.69	1391882.32	3184899.59	40.407219	-104.836035
	9135.00	91.29	270.31	7189.53	2411.76	-2523.52	-2390.27	0.37	1391882.10	3184805.61	40.407220	-104.836373
	9228.00	91.29	269.76	7187.44	2504.73	-2523.46	-2483.24	0.59	1391881.46	3184712.64	40.407220	-104.836707
	9320.00	91.23	270.20	7185.42	2596.71	-2523.50	-2575.22	0.48	1391880.73	3184620.67	40.407220	-104.837037
	9412.00	91.23	270.47	7183.44	2688.68	-2522.96	-2667.20	0.29	1391880.57	3184528.70	40.407221	-104.837367
	9506.00	91.22	269.81	7181.43	2782.65	-2522.73	-2761.17	0.70	1391880.08	3184434.73	40.407222	-104.837705
	9598.00	90.82	268.33	7179.79	2874.63	-2524.22	-2853.15	1.67	1391877.89	3184342.77	40.407218	-104.838035
	9691.00	90.88	268.80	7178.41	2967.60	-2526.55	-2946.11	0.51	1391874.86	3184249.84	40.407211	-104.838369
	9784.00	90.14	269.35	7177.59	3060.60	-2528.05	-3039.09	0.99	1391872.65	3184156.87	40.407207	-104.838703
	9878.00	90.32	269.24	7177.21	3154.60	-2529.21	-3133.08	0.22	1391870.79	3184062.90	40.407204	-104.839040
	9970.00	90.25	269.85	7176.75	3246.59	-2529.94	-3225.08	0.67	1391869.36	3183970.91	40.407202	-104.839370
	10063.00	90.35	269.41	7176.26	3339.59	-2530.54	-3318.07	0.49	1391868.05	3183877.93	40.407200	-104.839704
	10156.00	90.32	269.24	7175.72	3432.59	-2531.63	-3411.06	0.19	1391866.25	3183784.95	40.407197	-104.840038
	10248.00	91.54	269.46	7174.23	3524.58	-2532.68	-3503.05	1.35	1391864.51	3183692.98	40.407194	-104.840369
	10340.00	92.20	270.29	7171.23	3616.52	-2532.88	-3594.99	1.15	1391863.61	3183601.04	40.407194	-104.840699
	10433.00	92.36	269.57	7167.53	3709.45	-2532.99	-3687.92	0.79	1391862.80	3183508.12	40.407193	-104.841032
	10527.00	92.35	269.26	7163.66	3803.37	-2533.95	-3781.84	0.33	1391861.13	3183414.22	40.407191	-104.841370
	10619.00	92.49	270.37	7159.78	3895.28	-2534.25	-3873.75	1.22	1391860.13	3183322.31	40.407190	-104.841700
	10712.00	92.27	269.64	7155.92	3988.20	-2534.24	-3966.67	0.82	1391859.44	3183229.40	40.407190	-104.842033
	10806.00	92.29	269.13	7152.18	4082.12	-2535.25	-4060.59	0.54	1391857.72	3183135.50	40.407187	-104.842371
	10900.00	92.25	268.95	7148.45	4176.05	-2536.82	-4154.50	0.20	1391855.43	3183041.60	40.407183	-104.842708
	10992.00	92.12	269.65	7144.95	4267.98	-2537.94	-4246.43	0.77	1391853.61	3182949.69	40.407180	-104.843038
	11085.00	92.11	270.14	7141.51	4360.91	-2538.12	-4339.37	0.53	1391852.74	3182856.76	40.407179	-104.843372
	11177.00	91.96	269.49	7138.25	4452.85	-2538.41	-4431.31	0.72	1391851.74	3182764.83	40.407178	-104.843702
	11270.00	91.61	269.39	7135.35	4545.81	-2539.32	-4524.26	0.39	1391850.13	3182671.89	40.407176	-104.844036
	11362.00	91.57	269.25	7132.80	4637.77	-2540.41	-4616.21	0.16	1391848.34	3182579.95	40.407173	-104.844366
	11455.00	91.74	270.17	7130.11	4730.73	-2540.88	-4709.17	1.01	1391847.16	3182487.00	40.407171	-104.844700
	11547.00	92.30	269.00	7126.87	4822.67	-2541.55	-4801.11	1.41	1391845.80	3182395.07	40.407169	-104.845030
	11639.00	92.41	270.13	7123.09	4914.59	-2542.25	-4893.03	1.23	1391844.41	3182303.17	40.407167	-104.845360
	11732.00	92.39	269.10	7119.19	5007.51	-2542.87	-4985.95	1.11	1391843.08	3182210.26	40.407166	-104.845693
	11825.00	92.35	269.54	7115.35	5100.43	-2543.97	-5078.86	0.47	1391841.27	3182117.36	40.407163	-104.846027
	11919.00	92.05	269.65	7111.74	5194.36	-2544.64	-5172.79	0.34	1391839.90	3182023.45	40.407161	-104.846364
	12011.00	92.06	269.67	7108.44	5286.30	-2545.18	-5264.73	0.02	1391838.65	3181931.52	40.407159	-104.846694
	12105.00	91.27	268.99	7105.71	5380.26	-2546.28	-5358.68	1.11	1391836.84	3181837.58	40.407156	-104.847032
	12200.00	91.68	270.11	7103.26	5475.23	-2547.03	-5453.64	1.26	1391835.38	3181742.63	40.407154	-104.847373
	12293.00	90.46	269.99	7101.53	5568.20	-2546.95	-5546.63	1.32	1391834.75	3181649.65	40.407154	-104.847707
	12385.00	89.75	269.73	7101.36	5660.20	-2547.17	-5638.62	0.82	1391833.83	3181557.66	40.407154	-104.848037
	12478.00	89.85	269.36	7101.68	5753.20	-2547.91	-5731.62	0.41	1391832.39	3181464.68	40.407151	-104.848371
	12571.00	89.89	269.08	7101.89	5846.20	-2549.18	-5824.61	0.30	1391830.42	3181371.70	40.407148	-104.848705
	12665.00	89.62	269.92	7102.30	5940.20	-2550.00	-5918.61	0.94	1391828.88	3181277.72	40.407146	-104.849042
	12757.00	89.90	269.07	7102.68	6032.20	-2550.81	-6010.60	0.97	1391827.38	3181185.74	40.407143	-104.849373
	12850.00	89.84	269.76	7102.89	6125.19	-2551.76	-6103.60	0.74	1391825.72	3181092.76	40.407141	-104.849707
	12943.00	90.11	269.10	7102.93	6218.19	-2552.68	-6196.59	0.77	1391824.09	3180999.78	40.407138	-104.850040
	13036.00	89.75	269.55	7103.05	6311.19	-2553.78	-6289.58	0.62	1391822.29	3180906.80	40.407135	-104.850374
	13128.00	89.87	269.64	7103.35	6403.19	-2554.43	-6381.58	0.16	1391820.94	3180814.81	40.407133	-104.850705
	13222.00	90.12	269.89	7103.36	6497.19	-2554.81	-6475.58	0.38	1391819.85	3180720.82	40.407132	-104.851042
	13314.00	90.11	269.61	7103.17	6589.19	-2555.21	-6567.58	0.30	1391818.75	3180628.83	40.407131	-104.851373
	13503.00	89.98	269.42	7103.03	6778.19	-2556.81	-6756.57	0.12	1391815.71	3180439.87	40.407126	-104.852051
	13598.00	90.02	270.16	7103.03	6873.19	-2557.16	-6851.57	0.78	1391814.65	3180344.88	40.407125	-104.852382
	13692.00	89.92	269.33	7103.08	6967.19	-2557.58	-6945.57	0.89	1391813.52	3180250.89	40.407124	-104.852730
	13787.00	89.78	269.16	7103.32	7062.19	-2558.83	-7040.56	0.23	1391811.54	3180155.91	40.407121	-104.853071
	13880.00	89.74	269.18	7103.71	7155.18	-2560.18	-7133.55	0.05	1391809.49	3180062.94	40.407117	-104.853405
	13974.00	90.01	269.73	7103.92	7249.18	-2561.07	-7227.54	0.65	1391807.58	3179968.96	40.407114	-104.853742
	14068.00	89.67	269.03	7104.18	7343.18	-2562.09	-7321.54	0.83	1391806.16	3179874.98	40.407111	-104.854080
	14161.00	89.										

Comments	MD (ft)	Incl (°)	Azim True (°)	TVD (ft)	VSEC (ft)	NS (ft)	EW (ft)	DLS (°/100ft)	Northing (ftUS)	Easting (ftUS)	Latitude (°)	Longitude (°)
	17123.00	90.65	270.16	7076.70	10397.95	-2583.28	-10376.24	0.22	1391761.81	3176820.65	40.407050	-104.865049
	17215.00	90.44	269.87	7075.83	10489.94	-2583.26	-10468.23	0.39	1391761.14	3176728.67	40.407050	-104.865379
	17308.00	90.50	269.31	7075.06	10582.94	-2583.92	-10561.23	0.61	1391759.77	3176635.68	40.407048	-104.865713
	17402.00	90.31	268.62	7074.40	10676.93	-2585.62	-10655.21	0.76	1391757.36	3176541.72	40.407043	-104.866050
	17495.00	90.67	269.36	7073.60	10769.92	-2587.26	-10748.19	0.88	1391755.01	3176448.76	40.407039	-104.866384
	17587.00	90.46	269.37	7072.70	10861.92	-2588.28	-10840.18	0.23	1391753.30	3176356.78	40.407036	-104.866714
	17679.00	90.38	268.74	7072.02	10953.91	-2589.80	-10932.16	0.69	1391751.08	3176264.82	40.407032	-104.867045
	17772.00	90.22	269.08	7071.54	11046.91	-2591.57	-11025.15	0.40	1391748.61	3176171.85	40.407027	-104.867379
	17864.00	90.19	268.05	7071.21	11138.89	-2593.87	-11117.12	1.12	1391745.61	3176079.91	40.407020	-104.867709
	17956.00	90.47	269.33	7070.68	11230.88	-2595.97	-11209.09	1.42	1391742.81	3175987.96	40.407014	-104.868039
	18048.00	90.07	268.88	7070.24	11322.87	-2597.41	-11301.08	0.65	1391740.67	3175895.99	40.407010	-104.868369
Last SLB_MWD Survey	18070.00	90.04	268.67	7070.22	11344.87	-2597.88	-11323.07	0.96	1391740.03	3175874.00	40.407009	-104.868448
Projection to Bit	18093.00	90.04	268.67	7070.21	11367.87	-2598.42	-11346.06	0.00	1391739.33	3175851.01	40.407007	-104.868531

Survey Type: Def Survey

Survey Error Model: ISCWSA Rev 0 *** 3-D 95.000% Confidence 2.7955 sigma

Survey Program:

Description	Part	MD From (ft)	MD To (ft)	EOU Freq (ft)	Hole Size	Casing Diameter (in)	Survey Tool Type	Borehole / Survey
	1	0.000	20.000	1/98.425	13.500	9.625	NAL_MWD_IFR1-Depth Only	Original Hole / Bost Farm 34C-11-L IFR 0' to 18093' Definitive
	1	20.000	1850.000	Act Stns	13.500	9.625	NAL_MWD_IFR1	Original Hole / Bost Farm 34C-11-L IFR 0' to 18093' Definitive
	1	1850.000	18093.000	Act Stns	8.500	5.500	NAL_MWD_IFR1+MS	Original Hole / Bost Farm 34C-11-L IFR 0' to 18093' Definitive