



SRC Energy

Schlumberger

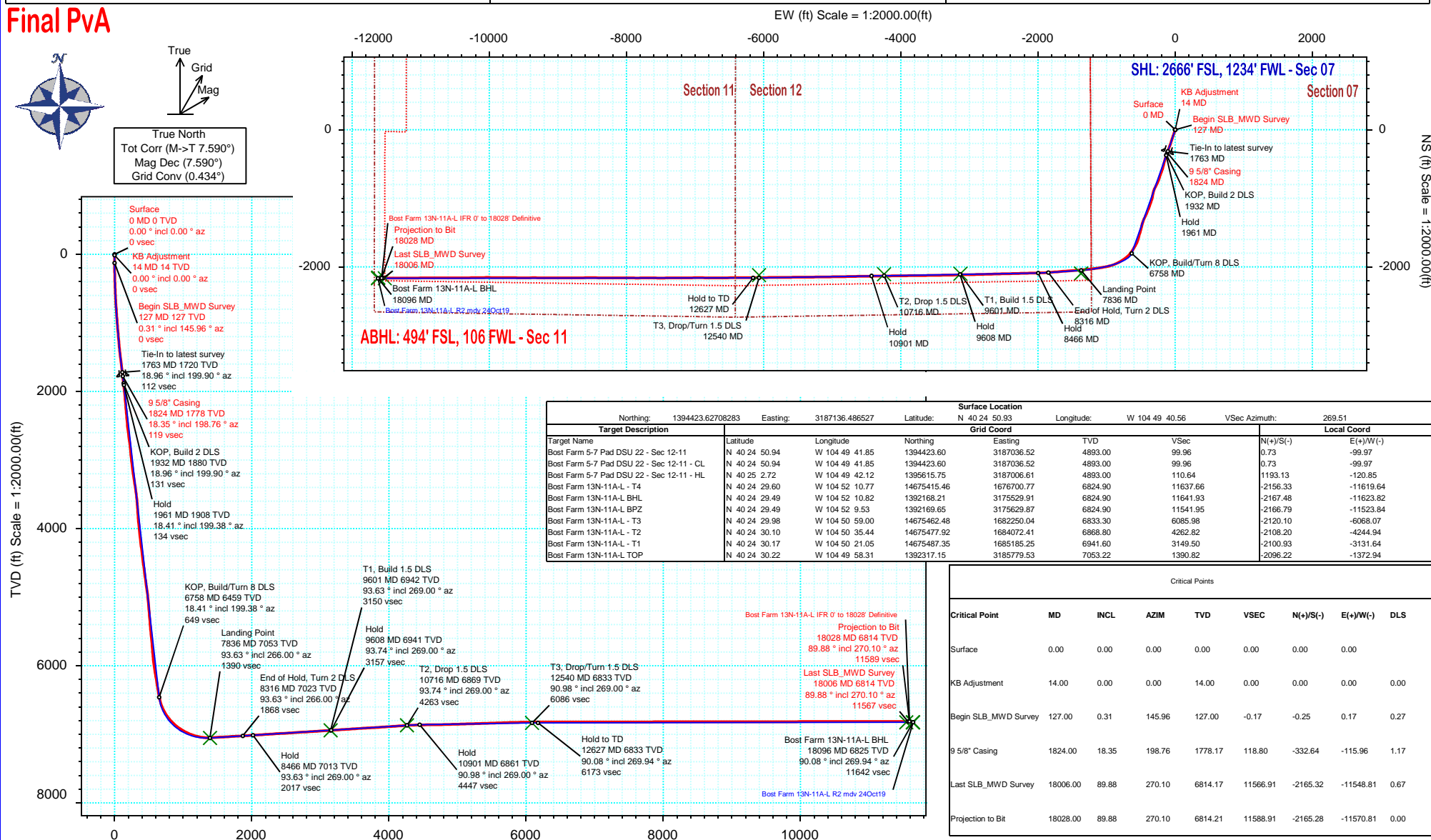
Borehole:	Well:	Field:	Structure:
Original Hole	Bost Farm 13N-11A-L	CO, Weld County (NAD 83 NZ) - SRC	SRC Energy 07-05N-66W (Bost Farm 5-7 Pad DSU 20)

Gravity & Magnetic Parameters				Surface Location				Miscellaneous			
Model:	Magvar IFR	Dip:	66.59°	Date:	24-Oct-2019	Lat:	N 40 24 50.93	Northing:	1394423.63ftUS	Grid Conv:	0.4342°
MagDec:	7.59°	FS:	52202nT	Gravity FS:	999.024mgn (9.80665 Based)	Lon:	W 104 49 40.56	Easting:	3187136.49ftUS	Scale Fact:	0.9999609
								Slot: Bost Farm 13N-11A-L			
								TVD Ref: KB 20ft(4893ft above MSL)			
								Plan: Bost Farm 13N-11A-L IFR 0' to 18028' Definitive			

Final PvA



True North
Tot Corr (M->T 7.590°)
Mag Dec (7.590°)
Grid Conv (0.434°)



Vertical Section (ft) Azim = 269.51° Scale = 1:2000.00(ft) Origin = 0N/-S, 0E/-W

Bost Farm 13N-11A-L IFR 0' to 18028' Definitive Survey Geodetic Report

(Def Survey)

Report Date: December 03, 2019 - 01:46 PM
Client: SRC Energy
Field: CO, Weld County (NAD 83 NZ) - SRC
Structure / Slot: SRC Energy 07-05N-66W (Bost Farm 5-7 Pad DSU 20) / Bost Farm 13N-11A-L
Well: Bost Farm 13N-11A-L
Borehole: Original Hole
UWI / API#: Unknown / 05-123-50259
Survey Name: Bost Farm 13N-11A-L IFR 0' to 18028' Definitive
Survey Date: May 29, 2019
Tort / AHD / DDI / ERD Ratio: 246.216 ° / 12906.442 ft / 6.910 / 1.831
Coordinate Reference System: NAD83 Colorado State Plane, Northern Zone, US Feet
Location Lat / Long: N 40° 24' 50.93280", W 104° 49' 40.56240"
Location Grid N/E Y/X: N 1394423.627 ftUS, E 3187136.487 ftUS
CRS Grid Convergence Angle: 0.4342 °
Grid Scale Factor: 0.9999609
Version / Patch: 2.10.787.0

Survey / DLS Computation: Minimum Curvature / Lubinski
Vertical Section Azimuth: 269.510 ° (True North)
Vertical Section Origin: 0.000 ft, 0.000 ft
TVD Reference Datum: KB 20ft
TVD Reference Elevation: 4893.000 ft above MSL
Seabed / Ground Elevation: 4873.000 ft above MSL
Magnetic Declination: 7.590 °
Total Gravity Field Strength: 999.0244mgn (9.80665 Based)
Gravity Model: GARM
Total Magnetic Field Strength: 52202.000 nT
Magnetic Dip Angle: 66.590 °
Declination Date: October 24, 2019
Magnetic Declination Model: Magvar IFR
North Reference: True North
Grid Convergence Used: 0.0000 °
Total Corr Mag North->True North: 7.5900 °
Local Coord Referenced To: Well Head

Comments	MD (ft)	Incl (°)	Azim True (°)	TVD (ft)	VSEC (ft)	NS (ft)	EW (ft)	DLS (°/100ft)	Northing (ftUS)	Easting (ftUS)	Latitude (°)	Longitude (°)
Surface	0.00	0.00	0.00	0.00	0.00	0.00	0.00	N/A	1394423.63	3187136.49	40.414148	-104.827934
KB Adjustment	14.00	0.00	0.00	14.00	0.00	0.00	0.00	0.00	1394423.63	3187136.49	40.414148	-104.827934
Begin												
SLB_MWD	127.00	0.31	145.96	127.00	-0.17	-0.25	0.17	0.27	1394423.38	3187136.66	40.414147	-104.827933
Survey												
	215.00	1.33	196.38	214.99	0.00	-1.43	0.02	1.32	1394422.20	3187136.51	40.414144	-104.827934
	307.00	3.31	202.37	306.91	1.34	-4.91	-1.30	2.17	1394418.71	3187135.23	40.414135	-104.827939
	397.00	4.82	199.64	396.68	3.65	-10.88	-3.56	1.69	1394412.73	3187133.01	40.414118	-104.827947
	487.00	6.50	200.21	486.24	6.75	-19.22	-6.59	1.87	1394404.36	3187130.05	40.414095	-104.827958
	577.00	7.87	198.01	575.53	10.51	-29.86	-10.25	1.55	1394393.69	3187126.46	40.414066	-104.827971
	667.00	9.41	197.87	664.51	14.78	-42.72	-14.41	1.71	1394380.80	3187122.40	40.414031	-104.827986
	757.00	10.78	200.30	753.11	20.08	-57.62	-19.59	1.59	1394365.86	3187117.33	40.413990	-104.828004
	847.00	11.84	199.59	841.36	26.24	-74.21	-25.61	1.19	1394349.23	3187111.44	40.413944	-104.828026
	937.00	12.42	199.15	929.35	32.67	-92.05	-31.88	0.65	1394331.34	3187105.31	40.413895	-104.828048
	1027.00	13.30	197.61	1017.09	39.13	-111.06	-38.19	1.05	1394312.28	3187099.14	40.413843	-104.828071
	1117.00	14.01	198.98	1104.55	45.98	-131.23	-44.86	0.87	1394292.06	3187092.62	40.413788	-104.828095
	1207.00	15.33	198.45	1191.61	53.48	-152.82	-52.17	1.47	1394270.42	3187085.48	40.413729	-104.828121
	1297.00	15.95	196.33	1278.28	60.92	-175.97	-59.41	0.94	1394247.21	3187078.41	40.413665	-104.828147
	1387.00	17.19	198.45	1364.54	68.81	-200.46	-67.10	1.53	1394222.67	3187070.91	40.413598	-104.828175
	1477.00	18.74	200.91	1450.15	78.40	-226.58	-76.47	1.92	1394196.48	3187061.74	40.413526	-104.828209
	1567.00	18.69	199.95	1535.40	88.71	-253.64	-86.55	0.35	1394169.35	3187051.87	40.413452	-104.828245
	1657.00	19.66	201.27	1620.40	99.36	-281.31	-96.96	1.18	1394141.61	3187041.66	40.413376	-104.828282
	1747.00	19.27	200.61	1705.26	110.32	-309.31	-107.68	0.50	1394113.52	3187031.16	40.413299	-104.828321
	1763.00	18.96	199.90	1720.38	112.18	-314.23	-109.49	2.42	1394108.59	3187029.38	40.413285	-104.828327
9 5/8" Casing	1824.00	18.35	198.76	1778.17	118.80	-332.64	-115.96	1.17	1394090.13	3187023.06	40.413235	-104.828350
	1868.00	17.91	197.90	1819.99	123.21	-345.63	-120.26	1.17	1394077.11	3187018.85	40.413199	-104.828366
	1961.00	18.01	199.58	1908.46	132.66	-372.79	-129.48	0.57	1394049.88	3187009.84	40.413125	-104.828399
	2055.00	18.02	197.99	1997.85	142.26	-400.31	-138.84	0.52	1394022.30	3187000.69	40.413049	-104.828433
	2147.00	18.54	196.52	2085.21	151.04	-427.86	-147.39	0.76	1393994.68	3186992.35	40.412974	-104.828463
	2240.00	17.58	194.35	2173.62	158.97	-455.65	-155.08	1.26	1393966.84	3186984.87	40.412897	-104.828491
	2333.00	17.24	194.98	2262.36	166.24	-482.57	-162.12	0.42	1393939.87	3186978.04	40.412823	-104.828516
	2428.00	18.96	194.91	2352.66	174.09	-511.08	-169.73	1.81	1393911.29	3186970.64	40.412745	-104.828544
	2520.00	19.50	193.70	2439.53	181.83	-540.44	-177.21	0.73	1393881.88	3186963.38	40.412665	-104.828570
	2613.00	19.66	196.55	2527.15	190.22	-570.52	-185.35	1.04	1393851.74	3186955.48	40.412582	-104.828600
	2706.00	20.44	201.21	2614.52	200.81	-600.66	-195.68	1.91	1393821.53	3186945.37	40.412499	-104.828637
	2800.00	20.57	201.54	2702.56	213.07	-631.32	-207.68	0.19	1393790.78	3186933.61	40.412415	-104.828680
	2893.00	18.73	198.54	2790.15	224.07	-660.68	-218.43	2.26	1393761.34	3186923.08	40.412335	-104.828718
	2985.00	17.48	196.11	2877.59	232.83	-687.96	-226.96	1.59	1393734.00	3186914.76	40.412260	-104.828749
	3079.00	19.09	198.91	2966.84	241.97	-716.06	-235.86	1.95	1393705.83	3186906.07	40.412182	-104.828781
	3171.00	17.71	203.10	3054.14	252.57	-743.17	-246.22	2.08	1393678.64	3186895.91	40.412108	-104.828818
	3264.00	17.32	203.13	3142.83	263.78	-768.91	-257.21	0.42	1393652.82	3186885.12	40.412037	-104.828858
	3357.00	19.25	206.67	3231.13	276.32	-795.35	-269.53	2.39	1393626.29	3186873.00	40.411965	-104.828902
	3450.00	17.35	206.45	3319.42	289.61	-821.46	-282.59	2.04	1393600.08	3186860.14	40.411893	-104.828949
	3543.00	17.14	208.12	3408.24	302.45	-845.96	-295.23	0.58	1393575.48	3186847.69	40.411826	-104.828994
	3636.00	19.10	201.14	3496.64	314.62	-872.25	-307.18	3.14	1393549.11	3186835.91	40.411754	-104.829037
	3730.00	18.02	197.22	3585.75	324.72	-900.48	-317.03	1.75	1393520.80	3186826.31	40.411676	-104.829072
	3823.00	18.36	190.72	3674.11	331.94	-928.62	-324.01	2.21	1393492.62	3186819.54	40.411599	-104.829098
	3915.00	19.57	188.97	3761.12	337.29	-958.07	-329.11	1.45	1393463.13	3186814.66	40.411518	-104.829116
	4008.00	19.38	191.76	3848.80	343.12	-988.57	-334.68	1.02	1393432.59	3186809.32	40.411434	-104.829136
	4101.00	19.40	196.68	3936.53	350.96	-1018.47	-342.26	1.76	1393402.63	3186801.97	40.411352	-104.829163
	4287.00	17.96	199.96	4112.73	370.10	-1075.02	-360.92	0.96	1393345.95	3186783.74	40.411197	-104.829230
	4380.00	17.95	200.72	4201.20	380.29	-1101.90	-370.88	0.25	1393318.99	3186773.98	40.411123	-104.829266
	4473.00	18.48	200.02	4289.54	390.64	-1129.15	-381.00	0.62	1393291.66	3186764.07	40.411049	-104.829302
	4566.00	18.11	201.23	4377.84	401.15	-1156.48	-391.28	0.57	1393264.27	3186754.00	40.410974	-104.829339
	4659.00	18.88	202.93	4466.04	412.48	-1183.81	-402.38	1.01	1393236.85	3186743.11	40.410899	-104.829379
	4752.00	18.24	202.51	4554.20	424.15	-1211.11	-413.81	0.70	1393209.46	3186731.88	40.410824	-104.829420
	4844.00	17.63	204.16	4641.73	435.59	-1237.12	-425.02	0.86	1393183.37	3186720.87	40.410752	-104.829460
	4937.00	18.19	203.88	4730.22	447.45	-1263.25	-436.66	0.61	1393157.16	3186709.43	40.410681	-104.829502
	5030.00	19.01	206.43	4818.37	460.30	-1290.08	-449.28	1.24	1393130.23	3186697.01	40.410607	-104.829547
	5124.00	18.30	202.42	4907.43	472.98	-1317.44	-461.73	1.56	1393102.78	3186684.78	40.410532	-104.829592
	5218.00	18.66	197.79	4996.59	483.44	-1345.40	-471.95	1.61	1393074.74	3186674.77	40.410455	-104.829629
	5310.00	18.02	195.18	5083.92	491.90	-1373.15	-480.17	1.13	1393046.94	3186666.75	40.410379	-104.829658
	5406.00	18.18	194.71	5175.17	499.84	-1401.96	-487.86	0.23	1393018.06	3186659.28	40.410300	-104.829686
	5500.00	17.25	192.74	5264.71	506.87	-1429.74	-494.66	1.18	1392990.23	3186652.69	40.410223	-104.829710
	5595.00	17.71	195.22	5355.32	514.01	-1457.43	-501.56	0.92	1392962.50	3186646.01	40.410148	-104.829735
	5689.00	16.80	195.95	5445.09	521.72	-1484.28	-509.05	1.00	1392935.59	3186638.72	40.410074	-104.829762
	5781.00	18.18	198.44	5532.84	530.14	-1510.68	-517.24	1.71	1392909.13	3186630.73	40.410001	-104.829791
	5874.00	17.87	196.01	5621.28	538.90	-1538.16	-525.77	0.87	1392881.59	3186622.41	40.409926	-104.829822
	5967.00	17.16	193.92	5709.96	546.37	-1565.20	-533.00	1.02	1392854.50	3186615.38	40.409852	-104.829848
	6060.00	17.96	194.52	5798.63	553.50	-1592.39	-539.90	0.88	1392827.25	3186608.69	40.409777	-104.829873
	6152.00	16.48	198.92	5886.51	561.51	-1618.47	-547.69	2.14	1392801.12	3186601.00	40.409705	-104.829901
	6246.00	16.69	204.58	5976.60	571.66	-1643.36	-557.63	1.73	1392776.16	3186591.35	40.409637	-104.829936
	6341.00	18.27	209.57	6067.22	584.90	-1668.72	-570.65	2.29	1392750.70	3186578.52	40.409568	-104.829983
	6437.00	17.72	210.06	6158.52	599.86	-1694.45	-585.39	0.59	1392724.86	3186563.98	40.409497	-104.830036
	6533.00	17.75	209.75	6249.96	614.66	-1719.80	-599.97	0.10	1392699.40	3186549.59	40.409427	-104.830088
	6625.00	17.93	211.62	6337.54	629.25	-1744.04.						

Comments	MD (ft)	Incl (°)	Azim True (°)	TVD (ft)	VSEC (ft)	NS (ft)	EW (ft)	DLS (°/100ft)	Northing (ftUS)	Easting (ftUS)	Latitude (°)	Longitude (°)
	6905.00	30.35	222.21	6597.47	690.47	-1826.46	-674.87	9.07	1392592.18	3186475.50	40.408135	-104.830357
	6997.00	35.91	230.25	6674.52	727.17	-1860.97	-711.28	7.69	1392557.40	3186439.36	40.409040	-104.830488
	7090.00	41.82	236.69	6746.93	774.40	-1895.48	-758.22	7.69	1392522.53	3186392.69	40.408945	-104.830657
	7185.00	46.87	240.95	6814.86	831.52	-1929.74	-815.04	6.17	1392487.85	3186336.13	40.408851	-104.830861
	7277.00	52.54	246.93	6874.37	894.80	-1960.39	-878.07	7.91	1392456.72	3186273.34	40.408767	-104.831087
	7371.00	57.48	255.53	6928.32	967.84	-1984.96	-950.90	9.15	1392431.60	3186200.29	40.408699	-104.831349
	7464.00	64.84	259.91	6973.17	1047.53	-2002.16	-1030.44	8.92	1392413.80	3186121.29	40.408652	-104.831634
	7556.00	70.09	261.40	7008.42	1131.46	-2015.93	-1114.26	5.90	1392399.39	3186037.58	40.408614	-104.831935
	7649.00	77.72	263.51	7034.18	1220.07	-2027.62	-1202.78	8.49	1392387.03	3185949.16	40.408582	-104.832253
	7741.00	85.37	263.85	7047.70	1310.54	-2037.63	-1293.16	8.32	1392376.34	3185858.86	40.408555	-104.832578
	7834.00	93.24	265.67	7048.83	1403.13	-2046.11	-1385.68	8.69	1392367.15	3185766.41	40.408532	-104.832910
	7927.00	93.14	265.50	7043.65	1495.77	-2053.26	-1478.27	0.21	1392359.30	3185673.89	40.408512	-104.833242
	8019.00	93.01	265.47	7038.72	1587.41	-2060.49	-1569.85	0.15	1392351.38	3185582.36	40.408492	-104.833571
	8113.00	93.36	265.44	7033.50	1681.03	-2067.93	-1663.41	0.37	1392343.23	3185488.87	40.408472	-104.833907
	8205.00	92.88	265.57	7028.49	1772.67	-2075.13	-1754.99	0.54	1392335.34	3185397.35	40.408452	-104.834236
	8298.00	93.29	265.41	7023.48	1865.31	-2082.43	-1847.57	0.47	1392327.34	3185304.83	40.408432	-104.834568
	8391.00	93.93	268.63	7017.63	1958.02	-2087.26	-1940.24	3.52	1392321.81	3185212.20	40.408418	-104.834901
	8484.00	93.71	268.57	7011.43	2050.80	-2089.53	-2033.01	0.25	1392318.84	3185119.46	40.408412	-104.835234
	8577.00	93.85	268.22	7005.30	2143.58	-2092.13	-2125.77	0.40	1392315.54	3185026.72	40.408405	-104.835567
	8670.00	93.50	268.74	6999.34	2236.38	-2094.59	-2218.54	0.67	1392312.37	3184933.97	40.408398	-104.835900
	8763.00	93.45	268.23	6993.70	2329.19	-2097.04	-2311.34	0.55	1392309.22	3184841.20	40.408392	-104.836234
	8856.00	93.46	268.89	6988.10	2422.01	-2099.37	-2404.14	0.71	1392306.18	3184748.42	40.408385	-104.836567
	8948.00	93.48	268.91	6982.53	2513.83	-2101.14	-2495.96	0.03	1392303.72	3184656.63	40.408380	-104.836897
	9041.00	93.56	268.34	6976.82	2606.65	-2103.36	-2588.75	0.62	1392300.79	3184563.85	40.408374	-104.837230
	9134.00	93.56	268.28	6971.04	2699.45	-2106.10	-2681.53	0.06	1392297.35	3184471.10	40.408367	-104.837563
	9227.00	93.28	268.21	6965.50	2792.26	-2108.94	-2774.33	0.31	1392293.80	3184378.34	40.408359	-104.837896
	9320.00	93.79	268.71	6959.76	2885.07	-2111.44	-2867.11	0.77	1392290.61	3184285.57	40.408352	-104.838229
	9412.00	93.94	269.16	6953.56	2976.85	-2113.15	-2958.89	0.51	1392288.20	3184193.82	40.408347	-104.838559
	9505.00	93.71	268.95	6947.36	3069.64	-2114.68	-3051.67	0.33	1392285.97	3184101.06	40.408343	-104.838892
	9598.00	93.41	268.44	6941.58	3162.45	-2116.79	-3144.46	0.64	1392283.15	3184008.28	40.408337	-104.839225
	9691.00	93.97	268.40	6935.60	3255.24	-2119.35	-3237.24	0.60	1392279.89	3183915.54	40.408330	-104.839558
	9783.00	93.62	269.21	6929.51	3347.03	-2121.26	-3329.01	0.96	1392277.28	3183823.78	40.408325	-104.839888
	9877.00	93.89	269.50	6923.35	3440.83	-2122.32	-3422.81	0.42	1392275.52	3183730.00	40.408322	-104.840225
	9970.00	93.74	268.97	6917.16	3533.62	-2123.56	-3515.59	0.59	1392273.57	3183637.23	40.408318	-104.840558
	10063.00	93.41	268.70	6911.36	3626.44	-2125.45	-3608.39	0.46	1392270.98	3183544.44	40.408313	-104.840891
	10155.00	93.21	269.46	6906.05	3718.28	-2126.92	-3700.22	0.85	1392268.81	3183452.64	40.408309	-104.841221
	10247.00	93.56	269.65	6900.62	3810.12	-2127.63	-3792.06	0.43	1392267.40	3183360.81	40.408307	-104.841551
	10340.00	93.62	269.21	6894.80	3902.94	-2128.56	-3884.87	0.48	1392265.78	3183268.02	40.408304	-104.841884
	10433.00	94.07	268.78	6888.56	3995.72	-2130.18	-3977.65	0.67	1392263.45	3183175.26	40.408300	-104.842217
	10526.00	93.76	269.29	6882.21	4088.50	-2131.75	-4070.42	0.64	1392261.18	3183082.51	40.408296	-104.842550
	10618.00	94.04	269.98	6875.95	4180.29	-2132.33	-4162.20	0.81	1392259.90	3182990.73	40.408294	-104.842880
	10711.00	93.54	269.69	6869.81	4273.08	-2132.60	-4255.09	0.62	1392258.93	3182897.95	40.408293	-104.843213
	10805.00	91.80	268.50	6865.43	4366.97	-2134.08	-4348.88	2.24	1392256.74	3182804.08	40.408289	-104.843550
	10899.00	90.97	269.29	6863.15	4460.94	-2135.89	-4442.83	1.22	1392254.21	3182710.15	40.408284	-104.843887
	10992.00	90.77	269.16	6861.74	4553.93	-2137.15	-4535.81	0.26	1392252.25	3182617.19	40.408281	-104.844221
	11085.00	90.83	268.98	6860.44	4646.91	-2138.66	-4628.79	0.20	1392250.03	3182524.22	40.408276	-104.844555
	11177.00	90.50	268.72	6859.38	4738.90	-2140.51	-4720.77	0.46	1392247.49	3182432.37	40.408271	-104.844888
	11269.00	91.39	268.93	6857.86	4830.88	-2142.39	-4812.74	0.99	1392244.91	3182340.32	40.408266	-104.845216
	11362.00	92.24	268.98	6854.91	4923.83	-2144.09	-4905.67	0.92	1392242.51	3182247.41	40.408261	-104.845549
	11454.00	91.51	269.15	6851.90	5015.78	-2145.59	-4997.61	0.81	1392240.31	3182155.49	40.408257	-104.845880
	11546.00	91.61	269.64	6849.40	5107.74	-2146.56	-5089.57	0.54	1392238.64	3182063.54	40.408254	-104.846210
	11639.00	91.84	269.02	6846.60	5200.70	-2147.65	-5182.52	0.71	1392236.85	3181970.60	40.408251	-104.846544
	11732.00	92.16	269.11	6843.35	5293.64	-2149.16	-5275.45	0.36	1392234.63	3181877.69	40.408247	-104.846877
	11824.00	91.52	269.70	6840.40	5385.59	-2150.12	-5367.40	0.95	1392232.98	3181785.76	40.408245	-104.847207
	11918.00	91.76	269.65	6837.71	5479.55	-2150.65	-5461.36	0.26	1392231.74	3181691.81	40.408243	-104.847545
	12011.00	91.46	268.91	6835.10	5572.51	-2151.82	-5554.31	0.86	1392229.86	3181598.87	40.408240	-104.847879
	12105.00	92.50	269.77	6831.85	5666.46	-2152.90	-5648.25	1.44	1392228.07	3181504.95	40.408237	-104.848216
	12200.00	91.54	269.87	6828.50	5761.39	-2153.20	-5743.19	1.02	1392227.05	3181410.02	40.408236	-104.848557
	12292.00	91.45	268.99	6826.10	5853.36	-2154.12	-5835.15	0.96	1392225.44	3181318.07	40.408233	-104.848887
	12385.00	90.67	269.27	6824.38	5946.34	-2155.53	-5928.13	0.89	1392223.32	3181225.11	40.408229	-104.849221
	12477.00	90.82	268.96	6823.18	6038.33	-2156.95	-6020.11	0.37	1392221.20	3181133.15	40.408225	-104.849551
	12571.00	90.88	269.85	6821.79	6132.32	-2157.92	-6114.09	0.95	1392219.52	3181039.18	40.408223	-104.849889
	12664.00	90.22	270.18	6820.90	6225.31	-2157.90	-6207.08	0.79	1392218.84	3180946.19	40.408223	-104.850223
	12757.00	90.48	270.50	6820.33	6318.30	-2157.35	-6300.08	0.44	1392218.68	3180853.19	40.408224	-104.850556
	12849.00	89.49	269.15	6820.35	6410.30	-2157.63	-6392.08	1.82	1392217.71	3180761.21	40.408223	-104.850887
	12943.00	89.85	269.54	6820.89	6504.29	-2158.70	-6486.07	0.56	1392215.92	3180667.23	40.408220	-104.851224
	13035.00	89.86	269.57	6821.13	6596.29	-2159.42	-6578.07	0.03	1392214.51	3180575.24	40.408218	-104.851555
	13127.00	90.28	269.48	6821.01	6688.29	-2160.18	-6670.06	0.47	1392213.05	3180483.26	40.408216	-104.851885
	13221.00	90.15	270.88	6820.66	6782.28	-2159.89	-6764.06	1.50	1392212.63	3180389.27	40.408217	-104.852223
	13314.00	90.12	270.27	6820.44	6875.27	-2158.95	-6857.05	0.66	1392212.86	3180296.27	40.408219	-104.852556
	13409.00	90.43	270.39	6819.99	6970.26	-2158.41	-6952.05	0.35	1392212.69	3180201.28	40.408221	-104.852898
	13503.00	89.85	268.39	6819.76	7064.25	-2159.41	-7046.04	2.22	1392210.97	3180107.30	40.408218	-104.853235
	13597.00	89.90	269.28	6819.96	7158.24	-2161.32	-7140.02	0.95	1392208.35	3180013.34	40.408213	-104.853573
	13691.00	90.34	270.46	6819.76	7252.24	-2161.53	-7234.02	1.34	1392207.42	3179919.36	40.408212	-104.853910
	13786.00	89.96	269.89	6819.52	7347.23	-2161.24	-7329.02	0.72	1392206.99	3179824.36	40.408213	-104.854251
	13880.00	90.12	268.92	6819.45	7441.23	-2162.22	-7423.01	1.05	1392205.31	3179730.38	40.408210	-104.854589
	13974.00	90.16	270.53	6819.22	7535.23	-2162.67	-7517.01	1.71	1392204.14	3179636.40	40.408209	-104.854926
	14068.00											

Comments	MD (ft)	Incl (°)	Azim True (°)	TVD (ft)	VSEC (ft)	NS (ft)	EW (ft)	DLS (°/100ft)	Northing (ftUS)	Easting (ftUS)	Latitude (°)	Longitude (°)
	17030.00	90.05	270.12	6814.04	10590.94	-2160.33	-10572.85	0.82	1392183.32	3176580.75	40.408212	-104.865899
	17122.00	90.09	269.63	6813.93	10682.93	-2160.53	-10664.85	0.53	1392182.42	3176488.76	40.408211	-104.866230
	17215.00	89.94	270.37	6813.90	10775.93	-2160.53	-10757.85	0.81	1392181.72	3176395.77	40.408211	-104.866563
	17308.00	90.08	269.83	6813.89	10868.92	-2160.37	-10850.85	0.60	1392181.17	3176302.77	40.408211	-104.866897
	17401.00	90.09	269.18	6813.75	10961.92	-2161.17	-10943.84	0.70	1392179.67	3176209.79	40.408209	-104.867231
	17494.00	89.75	269.08	6813.88	11054.92	-2162.58	-11036.83	0.38	1392177.55	3176116.82	40.408205	-104.867565
	17587.00	90.05	270.21	6814.04	11147.92	-2163.16	-11129.83	1.26	1392176.27	3176023.83	40.408203	-104.867899
	17679.00	90.22	269.26	6813.82	11239.92	-2163.59	-11221.82	1.05	1392175.15	3175931.84	40.408202	-104.868230
	17771.00	89.78	269.25	6813.82	11331.92	-2164.78	-11313.82	0.48	1392173.25	3175839.87	40.408199	-104.868560
	17863.00	89.99	270.20	6814.01	11423.91	-2165.22	-11405.81	1.06	1392172.11	3175747.88	40.408197	-104.868890
	17955.00	89.92	269.76	6814.08	11515.91	-2165.26	-11497.81	0.48	1392171.38	3175655.88	40.408197	-104.869221
Last SLB_MWD Survey	18006.00	89.88	270.10	6814.17	11566.91	-2165.32	-11548.81	0.67	1392170.94	3175604.89	40.408197	-104.869404
Projection to Bit	18028.00	89.88	270.10	6814.21	11588.91	-2165.28	-11570.81	0.00	1392170.81	3175582.89	40.408197	-104.869483

Survey Type: Def Survey

Survey Error Model: ISCWSA Rev 0 *** 3-D 95.000% Confidence 2.7955 sigma

Survey Program:

Description	Part	MD From (ft)	MD To (ft)	EOU Freq (ft)	Hole Size (in)	Casing Diameter (in)	Survey Tool Type	Borehole / Survey
	1	0.000	20.000	1/98.425	13.500	9.625	NAL_MWD_IFR1-Depth Only	Original Hole / Bost Farm 13N-11A-L IFR 0' to 18028' Definitive
	1	20.000	1824.000	Act Stns	13.500	9.625	NAL_MWD_IFR1	Original Hole / Bost Farm 13N-11A-L IFR 0' to 18028' Definitive
	1	1824.000	18028.000	Act Stns	8.500	5.500	NAL_MWD_IFR1+MS	Original Hole / Bost Farm 13N-11A-L IFR 0' to 18028' Definitive