



SRC Energy

Schlumberger

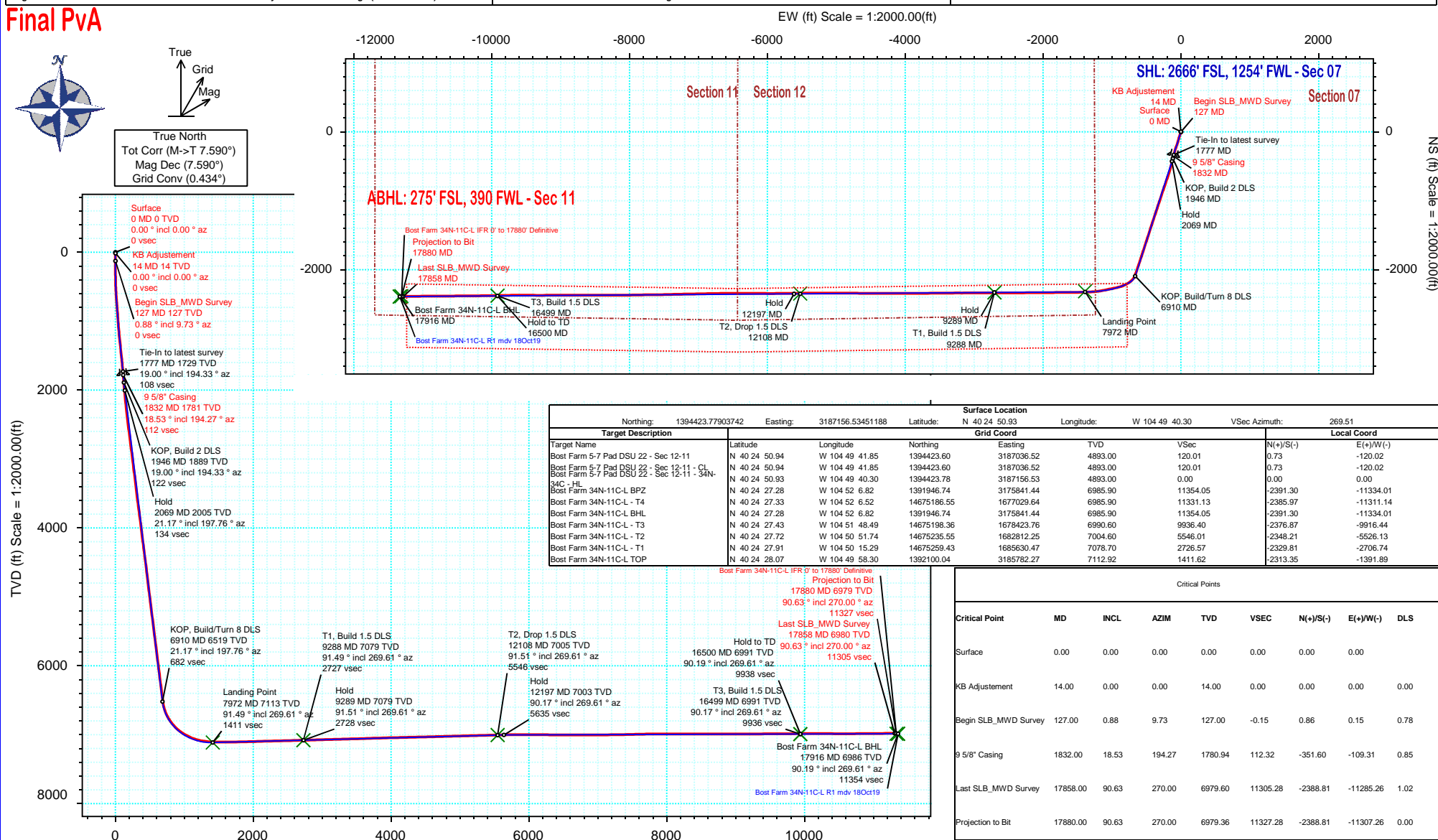
Borehole:	Well:	Field:	Structure:
Original Hole	Bost Farm 34N-11C-L	CO, Weld County (NAD 83 NZ) - SRC	SRC Energy 07-05N-66W (Bost Farm 5-7 Pad DSU 20)

Gravity & Magnetic Parameters				Surface Location				Miscellaneous			
Model:	Magvar IFR	Dip:	66.59°	Date:	19-Oct-2019	Lat:	N 40 24 50.93	Northing:	1394423.78ftUS	Grid Conv:	0.4343°
MagDec:	7.59°	FS:	52203nT	Gravity FS:	999.024mgn (9.80665 Based)	Lon:	W 104 49 40.30	Easting:	3187156.53ftUS	Scale Fact:	0.9999609
								Slot: Bost Farm 34N-11C-L			
								TVD Ref: KB 20ft(4893ft above MSL)			
								Plan: Bost Farm 34N-11C-L IFR 0' to 17880' Definitive			

Final Pva



True North
Tot Corr (M->T 7.590°)
Mag Dec (7.590°)
Grid Conv (0.434°)



Bost Farm 34N-11C-L IFR 0' to 17880' Definitive Survey Geodetic Report

(Def Survey)

Report Date: December 03, 2019 - 01:34 PM
Client: SRC Energy
Field: CO, Weld County (NAD 83 NZ) - SRC
Structure / Slot: SRC Energy 07-05N-66W (Bost Farm 5-7 Pad DSU 20) / Bost Farm
Well: Bost Farm 34N-11C-L
Borehole: Original Hole
UWI / API#: Unknown / 05-123-50260
Survey Name: Bost Farm 34N-11C-L IFR 0' to 17880' Definitive
Survey Date: May 29, 2019
Tort / AHD / DDI / ERD Ratio: 204.704 ° / 12905.169 ft / 6.823 / 1.816
Coordinate Reference System: NAD83 Colorado State Plane, Northern Zone, US Feet
Location Lat / Long: N 40° 24' 50.93280", W 104° 49' 40.30320"
Location Grid N/E Y/X: N 1394423.779 ftUS, E 3187156.535 ftUS
CRS Grid Convergence Angle: 0.4343 °
Grid Scale Factor: 0.9999609
Version / Patch: 2.10.787.0

Survey / DLS Computation: Minimum Curvature / Lubinski
Vertical Section Azimuth: 269.510 ° (True North)
Vertical Section Origin: 0.000 ft, 0.000 ft
TVD Reference Datum: KB 20ft
TVD Reference Elevation: 4893.000 ft above MSL
Seabed / Ground Elevation: 4873.000 ft above MSL
Magnetic Declination: 7.590 °
Total Gravity Field Strength: 999.0244mgm (9.80665 Based)
Gravity Model: GARM
Total Magnetic Field Strength: 52203.000 nT
Magnetic Dip Angle: 66.590 °
Declination Date: October 19, 2019
Magnetic Declination Model: Magvar IFR
North Reference: True North
Grid Convergence Used: 0.0000 °
Total Corr Mag North->True North: 7.5900 °
Local Coord Referenced To: Well Head

Comments	MD (ft)	Incl (°)	Azim True (°)	TVD (ft)	VSEC (ft)	NS (ft)	EW (ft)	DLS (°/100ft)	Northing (ftUS)	Easting (ftUS)	Latitude (°)	Longitude (°)
Surface	0.00	0.00	0.00	0.00	0.00	0.00	0.00	N/A	1394423.78	3187156.53	40.414148	-104.827862
KB Adjustment	14.00	0.00	0.00	14.00	0.00	0.00	0.00	0.00	1394423.78	3187156.53	40.414148	-104.827862
Begin SLB_MWD Survey	127.00	0.88	9.73	127.00	-0.15	0.86	0.15	0.78	1394424.64	3187156.67	40.414150	-104.827861
9 5/8" Casing	215.00	0.18	70.46	214.99	-0.40	1.57	0.39	0.92	1394425.35	3187156.91	40.414152	-104.827861
	307.00	1.55	199.66	306.98	-0.11	0.44	0.11	1.81	1394424.22	3187156.64	40.414149	-104.827862
	397.00	3.76	194.46	396.88	1.07	-3.56	-1.04	2.47	1394420.21	3187155.52	40.414138	-104.827866
	487.00	6.36	194.29	486.52	3.10	-11.25	-3.01	2.89	1394412.51	3187153.61	40.414117	-104.827873
	577.00	8.79	200.76	575.73	6.87	-22.51	-6.67	2.86	1394401.22	3187150.03	40.414086	-104.827886
	667.00	11.09	202.26	664.37	12.71	-36.96	-12.39	2.57	1394386.73	3187144.42	40.414047	-104.827906
	757.00	13.17	198.61	752.36	19.41	-54.68	-18.94	2.46	1394368.95	3187138.01	40.413998	-104.827930
	847.00	14.58	197.64	839.73	26.29	-75.20	-25.65	1.59	1394348.39	3187131.46	40.413942	-104.827954
	937.00	15.16	193.89	926.72	32.74	-97.42	-31.91	1.25	1394326.13	3187125.37	40.413881	-104.827977
	1027.00	14.72	196.01	1013.68	38.91	-119.83	-37.88	0.78	1394303.67	3187119.56	40.413819	-104.827998
	1117.00	15.60	195.78	1100.54	45.55	-142.47	-44.33	0.98	1394280.98	3187113.29	40.413757	-104.828021
	1207.00	15.78	197.99	1187.19	52.82	-165.75	-51.40	0.69	1394257.65	3187106.39	40.413693	-104.828047
	1297.00	16.92	200.10	1273.55	61.30	-189.69	-59.68	1.43	1394233.65	3187098.30	40.413627	-104.828076
	1387.00	17.28	199.40	1359.57	70.45	-214.60	-68.62	0.46	1394208.67	3187089.54	40.413559	-104.828108
	1477.00	18.34	199.88	1445.26	79.93	-240.52	-77.88	1.19	1394182.68	3187080.49	40.413488	-104.828142
	1567.00	18.38	195.74	1530.68	88.83	-267.50	-86.54	1.45	1394155.64	3187072.03	40.413414	-104.828173
	1657.00	19.80	195.52	1615.73	97.00	-295.85	-94.47	1.58	1394127.24	3187064.31	40.413336	-104.828201
	1747.00	19.35	195.12	1700.53	105.21	-324.93	-102.44	0.52	1394098.10	3187056.57	40.413256	-104.828230
	1777.00	19.00	194.33	1728.86	107.80	-334.46	-104.94	1.45	1394088.55	3187054.13	40.413230	-104.828239
	1832.00	18.53	194.27	1780.94	112.32	-351.60	-109.31	0.85	1394071.37	3187049.89	40.413183	-104.828255
	1869.00	18.22	194.22	1816.05	115.28	-362.91	-112.18	0.85	1394060.05	3187047.11	40.413152	-104.828265
	1962.00	19.05	192.36	1904.18	122.35	-391.83	-119.00	1.10	1394031.08	3187040.51	40.413072	-104.828289
	2056.00	21.12	193.09	1992.46	129.74	-423.31	-126.12	2.22	1393999.54	3187033.63	40.412986	-104.828315
	2240.00	20.59	195.00	2164.40	146.16	-486.85	-142.00	0.47	1393935.88	3187018.23	40.412812	-104.828372
	2334.00	20.38	195.37	2252.46	155.05	-518.60	-150.62	0.26	1393904.07	3187009.86	40.412724	-104.828403
	2429.00	21.23	195.97	2341.26	164.44	-551.09	-159.74	0.92	1393871.52	3187000.99	40.412635	-104.828436
	2521.00	21.41	198.62	2426.97	174.66	-583.02	-169.68	1.07	1393839.52	3186991.28	40.412548	-104.828471
	2614.00	21.12	198.06	2513.64	185.55	-615.03	-180.30	0.38	1393807.42	3186980.91	40.412460	-104.828509
	2707.00	21.73	199.29	2600.21	196.71	-647.21	-191.18	0.81	1393775.16	3186970.28	40.412371	-104.828549
	2801.00	21.20	197.82	2687.69	207.93	-679.82	-202.13	0.80	1393742.48	3186959.57	40.412282	-104.828588
	2893.00	20.81	199.23	2773.58	218.67	-711.08	-212.60	0.69	1393711.13	3186949.34	40.412196	-104.828625
	2986.00	21.21	198.53	2860.39	229.73	-742.63	-223.39	0.51	1393679.50	3186938.79	40.412110	-104.828664
	3079.00	20.47	199.10	2947.31	240.67	-773.95	-234.06	0.83	1393648.11	3186928.36	40.412024	-104.828703
	3172.00	20.97	198.13	3034.29	251.43	-805.13	-244.56	0.65	1393616.85	3186918.10	40.411938	-104.828740
	3265.00	20.97	198.08	3121.13	262.05	-836.77	-254.90	0.02	1393585.14	3186908.00	40.411851	-104.828777
	3358.00	20.70	200.72	3208.06	273.29	-867.96	-265.88	1.05	1393553.86	3186897.25	40.411766	-104.828817
	3451.00	21.00	198.47	3294.97	284.65	-899.14	-276.97	0.92	1393522.60	3186886.39	40.411680	-104.828857
	3544.00	21.36	197.63	3381.68	295.34	-931.09	-287.38	0.51	1393490.58	3186876.23	40.411592	-104.828894
	3637.00	20.34	197.66	3468.59	305.64	-962.63	-297.42	1.10	1393458.96	3186866.44	40.411506	-104.828930
	3730.00	20.89	198.07	3555.64	315.95	-993.80	-307.46	0.61	1393427.72	3186856.63	40.411420	-104.828966
	3823.00	21.75	198.81	3642.27	326.92	-1025.87	-318.16	0.97	1393395.57	3186846.17	40.411332	-104.829005
	3916.00	21.62	198.40	3728.69	338.16	-1058.44	-329.13	0.21	1393362.92	3186835.45	40.411243	-104.829044
	4009.00	21.56	197.87	3815.17	349.09	-1090.96	-339.78	0.22	1393330.32	3186825.05	40.411153	-104.829082
	4102.00	21.53	198.63	3901.67	360.07	-1123.39	-350.47	0.30	1393297.81	3186814.60	40.411064	-104.829121
	4195.00	21.23	197.80	3988.27	370.94	-1155.60	-361.07	0.46	1393265.53	3186804.25	40.410976	-104.829159
	4288.00	21.84	198.56	4074.78	381.87	-1188.03	-371.72	0.72	1393233.02	3186793.84	40.410887	-104.829197
	4381.00	21.12	198.38	4161.32	392.94	-1220.33	-382.51	0.78	1393200.64	3186783.30	40.410798	-104.829236
	4474.00	21.50	197.79	4247.96	403.70	-1252.46	-393.00	0.47	1393168.43	3186773.05	40.410710	-104.829273
	4567.00	21.55	198.23	4334.47	414.53	-1284.91	-403.55	0.18	1393135.90	3186762.75	40.410621	-104.829311
	4660.00	21.78	198.23	4420.90	425.55	-1317.52	-414.29	0.25	1393103.21	3186752.25	40.410532	-104.829350
4753.00	22.00	198.17	4507.20	436.66	-1350.45	-425.12	0.24	1393070.20	3186741.68	40.410441	-104.829389	
4845.00	21.24	198.58	4592.72	447.62	-1382.62	-435.81	0.84	1393037.95	3186731.24	40.410353	-104.829427	
4937.00	21.35	197.99	4678.44	458.37	-1414.35	-446.29	0.26	1393006.15	3186721.00	40.410266	-104.829465	
5031.00	20.79	197.61	4766.16	468.98	-1446.52	-456.62	0.61	1392973.90	3186710.91	40.410177	-104.829502	
5124.00	21.42	197.31	4852.92	479.29	-1478.47	-466.67	0.69	1392941.88	3186701.11	40.410090	-104.829538	
5219.00	21.15	198.14	4941.44	490.07	-1511.32	-477.17	0.43	1392908.95	3186690.86	40.410000	-104.829575	
5311.00	21.46	198.33	5027.15	500.80	-1543.06	-487.63	0.35	1392877.13	3186680.64	40.409912	-104.829613	
5406.00	21.15	198.43	5115.66	511.97	-1575.82	-498.51	0.33	1392844.29	3186670.00	40.409823	-104.829652	
5501.00	20.44	197.64	5204.47	522.69	-1607.89	-508.95	0.80	1392812.15	3186659.80	40.409735	-104.829690	
5596.00	21.65	198.54	5293.13	533.56	-1640.31	-519.55	1.32	1392779.64	3186649.45	40.409646	-104.829728	
5689.00	21.19	198.00	5379.71	544.49	-1672.56	-530.20	0.54	1392747.31	3186639.05	40.409557	-104.829766	
5782.00	21.77	197.76	5466.25	555.22	-1704.97	-540.66	0.63	1392714.83	3186628.84	40.409468	-104.829803	
5874.00	21.21	198.29	5551.85	565.92	-1737.02	-551.08	0.64	1392682.70	3186618.65	40.409380	-104.829841	
5968.00	21.21	198.04	5639.48	576.80	-1769.34	-561.69	0.10	1392650.31	3186608.30	40.409291	-104.829879	
6060.00	21.42	197.87	5725.19	587.38	-1801.15	-571.99	0.24	1392618.42	3186598.23	40.409204	-104.829916	
6153.00	21.75	198.59	5811.67	598.36	-1833.64	-582.70	0.45	1392585.85	3186587.77	40.409115	-104.829954	
6247.00	21.08	198.31	5899.18	609.50	-1866.20	-593.56	0.72	1392553.21	3186577.16	40.409025	-104.829993	
6341.00	21.38	197.93	5986.80	620.36	-1898.55	-604.15	0.35	1392520.78	3186566.82	40.408937	-104.830031	
6438.00	21.17	198.44	6077.19	631.63	-1931.99	-615.13	0.29	1392487.26	3186556.09	40.408845	-104.830071	
6533.00	21.25	198.84	6165.75	642.89	-1964.55	-626.12	0.17	1392454.62	3186545.35	40.408755	-104.830110	
6626.00	20.11	198.17	6252.76	653.59	-1995.70	-636.54	1.25	1392423.40	3186535.16	40.408670	-104.830148	
6719.00	20.11	199.64	6340.09	664.21	-2025.94	-646.90	0.54	1392393.07	3186525.03	40.408587	-104.830186	

Comments	MD (ft)	Incl (°)	Azim True (°)	TVD (ft)	VSEC (ft)	NS (ft)	EW (ft)	DLS (°/100ft)	Northing (ftUS)	Easting (ftUS)	Latitude (°)	Longitude (°)
	6811.00	19.90	200.70	6426.54	675.31	-2055.49	-657.75	0.46	1392363.45	3186514.41	40.408506	-104.830224
	6906.00	21.60	198.07	6515.38	686.72	-2087.24	-668.89	2.04	1392331.62	3186503.51	40.408419	-104.830264
	6998.00	24.96	211.92	6599.94	702.53	-2119.85	-684.43	6.96	1392298.89	3186488.22	40.408329	-104.830320
	7091.00	29.58	225.78	6682.66	729.68	-2152.56	-711.29	8.42	1392265.98	3186461.61	40.408239	-104.830416
	7185.00	36.22	234.26	6761.59	769.19	-2185.02	-750.53	8.58	1392233.23	3186422.62	40.408150	-104.830557
	7278.00	41.07	242.39	6834.25	818.88	-2215.26	-799.96	7.54	1392202.61	3186373.42	40.408067	-104.830735
	7372.00	46.92	251.36	6901.91	879.09	-2240.59	-859.96	9.08	1392176.83	3186313.61	40.407998	-104.830950
	7465.00	55.10	257.27	6960.40	948.79	-2259.89	-929.50	10.08	1392157.00	3186244.23	40.407945	-104.831200
	7557.00	62.41	258.86	7008.09	1025.84	-2276.11	-1006.41	8.08	1392140.20	3186167.45	40.407900	-104.831476
	7650.00	67.80	257.88	7047.23	1108.57	-2293.12	-1089.00	5.87	1392122.56	3186084.99	40.407854	-104.831772
	7742.00	75.62	260.21	7076.08	1194.40	-2309.67	-1174.69	8.83	1392105.37	3185999.43	40.407808	-104.832080
	7834.00	82.59	266.29	7093.48	1284.11	-2320.22	-1264.32	9.97	1392094.14	3185909.89	40.407779	-104.832402
	7927.00	85.00	267.29	7103.53	1376.46	-2325.39	-1356.62	2.80	1392088.26	3185817.64	40.407765	-104.832733
	8019.00	90.36	269.03	7107.25	1468.32	-2328.34	-1448.46	6.12	1392084.62	3185725.83	40.407757	-104.833063
	8113.00	90.18	269.02	7106.81	1562.31	-2329.94	-1542.44	0.19	1392082.31	3185631.86	40.407752	-104.833401
	8206.00	90.36	269.93	7106.37	1655.31	-2330.79	-1635.44	1.00	1392080.75	3185538.88	40.407750	-104.833735
	8298.00	91.40	269.39	7104.96	1747.30	-2331.34	-1727.42	1.27	1392079.51	3185446.90	40.407749	-104.834065
	8391.00	91.39	269.47	7102.69	1840.27	-2332.26	-1820.39	0.09	1392077.88	3185353.95	40.407746	-104.834399
	8484.00	91.23	269.17	7100.57	1933.25	-2333.37	-1913.36	0.37	1392076.07	3185260.99	40.407743	-104.834732
	8578.00	91.81	269.46	7098.07	2027.21	-2334.49	-2007.32	0.69	1392074.24	3185167.05	40.407740	-104.835070
	8670.00	91.45	269.71	7095.46	2119.17	-2335.16	-2099.28	0.48	1392072.87	3185075.10	40.407738	-104.835400
	8763.00	91.57	269.92	7093.01	2212.14	-2335.46	-2192.25	0.26	1392071.87	3184982.14	40.407737	-104.835734
	8857.00	91.55	269.81	7090.45	2306.10	-2335.68	-2286.21	0.12	1392070.93	3184888.19	40.407737	-104.836071
	8949.00	91.43	269.92	7088.05	2398.07	-2335.90	-2378.18	0.18	1392070.02	3184796.22	40.407736	-104.836402
	9042.00	91.43	269.91	7085.73	2491.04	-2336.03	-2471.15	0.01	1392069.18	3184703.26	40.407735	-104.836735
	9135.00	91.69	270.03	7083.20	2584.00	-2336.08	-2564.12	0.31	1392068.43	3184610.30	40.407735	-104.837069
	9228.00	91.13	269.36	7080.91	2676.97	-2336.58	-2657.09	0.94	1392067.23	3184517.34	40.407734	-104.837403
	9320.00	91.61	269.97	7078.71	2768.94	-2337.12	-2749.06	0.84	1392065.99	3184425.38	40.407732	-104.837733
	9413.00	91.72	269.52	7076.01	2861.90	-2337.53	-2842.02	0.50	1392064.87	3184332.43	40.407731	-104.838067
	9506.00	91.55	269.95	7073.36	2954.87	-2337.96	-2934.98	0.50	1392063.74	3184239.48	40.407730	-104.838401
	9599.00	91.57	269.73	7070.83	3047.83	-2338.22	-3027.94	0.24	1392062.77	3184146.52	40.407729	-104.838735
	9691.00	91.59	269.59	7068.29	3139.79	-2338.76	-3119.91	0.15	1392061.53	3184054.57	40.407728	-104.839065
	9784.00	91.77	270.23	7065.56	3232.75	-2338.91	-3212.87	0.71	1392060.68	3183961.62	40.407727	-104.839399
	9878.00	91.47	269.53	7062.91	3326.71	-2339.11	-3306.83	0.81	1392059.77	3183867.67	40.407727	-104.839736
	9970.00	91.66	269.29	7060.39	3418.68	-2340.05	-3398.79	0.33	1392058.13	3183775.72	40.407724	-104.840066
	10063.00	91.73	269.47	7057.64	3511.64	-2341.06	-3491.74	0.21	1392056.42	3183682.78	40.407721	-104.840400
	10156.00	91.74	269.53	7054.83	3604.59	-2341.87	-3584.70	0.07	1392054.90	3183589.84	40.407719	-104.840734
	10248.00	91.61	269.68	7052.14	3696.55	-2342.51	-3676.65	0.22	1392053.57	3183497.89	40.407717	-104.841064
	10341.00	91.73	269.69	7049.43	3789.51	-2343.02	-3769.61	0.13	1392052.35	3183404.94	40.407716	-104.841398
	10434.00	91.67	269.97	7046.67	3882.47	-2343.29	-3862.57	0.31	1392051.37	3183311.99	40.407715	-104.841732
	10527.00	91.65	270.14	7043.97	3975.43	-2343.20	-3955.53	0.18	1392050.76	3183219.04	40.407715	-104.842065
	10619.00	91.24	269.97	7041.65	4067.39	-2343.11	-4047.50	0.48	1392050.15	3183127.07	40.407715	-104.842396
	10712.00	91.41	269.40	7039.50	4160.37	-2343.63	-4140.48	0.64	1392048.93	3183034.11	40.407714	-104.842730
	10806.00	91.49	270.23	7037.13	4254.34	-2343.93	-4234.45	0.89	1392047.92	3182940.15	40.407713	-104.843067
	10900.00	91.32	270.05	7034.82	4348.30	-2343.70	-4328.42	0.26	1392047.44	3182846.18	40.407714	-104.843404
	10993.00	91.29	270.00	7032.70	4441.27	-2343.66	-4421.39	0.06	1392046.77	3182753.21	40.407714	-104.843738
	11085.00	91.72	270.57	7030.29	4533.23	-2343.20	-4513.36	0.78	1392046.53	3182661.25	40.407715	-104.844069
	11178.00	91.35	269.97	7027.79	4626.19	-2342.76	-4606.32	0.76	1392046.27	3182568.29	40.407716	-104.844402
	11270.00	91.60	270.64	7025.43	4718.15	-2342.27	-4698.29	0.78	1392046.06	3182476.32	40.407717	-104.844733
	11362.00	91.32	269.96	7023.08	4810.11	-2341.79	-4790.26	0.80	1392045.84	3182384.36	40.407719	-104.845063
	11455.00	91.67	270.19	7020.66	4903.08	-2341.67	-4883.23	0.45	1392045.26	3182291.40	40.407719	-104.845397
	11547.00	91.53	270.38	7018.09	4995.03	-2341.21	-4975.19	0.26	1392045.02	3182199.44	40.407720	-104.845727
	11640.00	91.66	270.38	7015.50	5087.98	-2340.60	-5068.15	0.14	1392044.93	3182106.48	40.407722	-104.846061
	11732.00	91.42	270.15	7013.03	5179.94	-2340.17	-5160.12	0.36	1392044.66	3182014.51	40.407723	-104.846391
	11825.00	91.19	269.25	7010.91	5272.92	-2340.66	-5253.09	1.00	1392043.47	3181921.55	40.407722	-104.846725
	11919.00	91.49	269.63	7008.71	5366.89	-2341.58	-5347.06	0.51	1392041.84	3181827.59	40.407719	-104.847062
	12105.00	91.59	269.94	7003.71	5552.82	-2342.27	-5532.99	0.18	1392039.73	3181641.68	40.407717	-104.847370
	12201.00	91.20	269.12	7001.37	5648.79	-2343.06	-5628.96	0.95	1392038.22	3181545.73	40.407715	-104.848074
	12293.00	91.26	269.20	6999.40	5740.77	-2344.41	-5720.93	0.11	1392036.17	3181453.77	40.407711	-104.848405
	12385.00	90.59	269.84	6997.91	5832.76	-2345.18	-5812.91	1.01	1392034.70	3181361.80	40.407709	-104.848735
	12478.00	89.50	269.46	6997.84	5925.75	-2345.75	-5905.91	1.24	1392033.43	3181268.82	40.407707	-104.849069
	12572.00	89.55	270.54	6998.62	6019.75	-2345.75	-5999.91	1.15	1392032.72	3181174.83	40.407707	-104.849406
	12665.00	89.50	270.22	6999.39	6112.73	-2345.13	-6092.90	0.35	1392032.63	3181081.83	40.407709	-104.849740
	12757.00	89.51	269.64	7000.19	6204.73	-2345.24	-6184.90	0.63	1392031.82	3180989.85	40.407708	-104.850071
	12850.00	89.56	270.81	7000.94	6297.71	-2344.88	-6277.89	1.26	1392031.48	3180896.86	40.407709	-104.850405
	12943.00	89.78	270.49	7001.48	6390.69	-2343.82	-6370.88	0.42	1392031.83	3180803.86	40.407712	-104.850739
	13036.00	89.47	269.65	7002.09	6483.69	-2343.71	-6463.88	0.96	1392031.24	3180710.87	40.407712	-104.851072
	13128.00	89.27	269.41	7003.10	6575.68	-2344.47	-6555.87	0.34	1392029.79	3180618.89	40.407710	-104.851403
	13222.00	89.67	269.58	7003.97	6669.68	-2345.29	-6649.86	0.46	1392028.25	3180524.91	40.407708	-104.851740
	13315.00	90.56	269.49	7003.78	6762.68	-2346.05	-6742.86	0.96	1392026.79	3180431.93	40.407706	-104.852074
	13409.00	90.08	268.28	7003.25	6856.67	-2347.88	-6836.84	1.38	1392024.25	3180337.97	40.407701	-104.852412
	13504.00	90.59	268.90	7002.70	6951.65	-2350.22	-6931.81	0.85	1392021.19	3180243.03	40.407694	-104.852753
	13598.00	90.60	268.61	7001.72	7045.64	-2352.26	-7025.78	0.31	1392018.43	3180149.07	40.407689	-104.853090
	13692.00	90.29	269.24	7000.99	7139.63	-2354.02	-7119.76	0.75	1392015.96	3180055.11	40.407684	-104.853428
	13787.00	90.40	269.23	7000.42	7234.63	-2355.29	-7214.75	0.12	1392013.97	3179960.14	40.407680	-104.853769
	13881.00	91.36	268.48	6998.98	7328.61	-2357.17	-7308.72	1.30	1392011.38	3179866.19	40.407675	-104.854106
	13975.00	91.32	268.49	6996.78	7422.57	-2359.65	-7402.66	0.04	1392008.18	3179772.28	40.407668	-104.854443
	14068.00	9										

Comments	MD (ft)	Incl (°)	Azim True (°)	TVD (ft)	VSEC (ft)	NS (ft)	EW (ft)	DLS (°/100ft)	Northing (ftUS)	Easting (ftUS)	Latitude (°)	Longitude (°)
	17031.00	89.82	269.62	6984.46	10478.32	-2381.11	-10458.34	0.09	1391963.57	3176716.97	40.407606	-104.865416
	17123.00	89.96	268.63	6984.63	10570.32	-2382.52	-10550.33	1.09	1391961.46	3176625.00	40.407602	-104.865746
	17215.00	89.96	269.74	6984.70	10662.32	-2383.82	-10642.32	1.21	1391959.46	3176533.03	40.407598	-104.866076
	17309.00	90.59	270.27	6984.25	10756.31	-2383.82	-10736.32	0.88	1391958.75	3176439.04	40.407598	-104.866414
	17402.00	90.61	269.54	6983.27	10849.30	-2383.97	-10829.31	0.79	1391957.90	3176346.05	40.407598	-104.866748
	17495.00	90.48	269.89	6982.39	10942.30	-2384.43	-10922.31	0.40	1391956.73	3176253.06	40.407596	-104.867082
	17587.00	90.25	269.17	6981.80	11034.30	-2385.19	-11014.30	0.82	1391955.28	3176161.08	40.407594	-104.867412
	17680.00	90.55	268.99	6981.15	11127.29	-2386.68	-11107.29	0.38	1391953.08	3176068.11	40.407590	-104.867746
	17772.00	90.41	269.15	6980.38	11219.28	-2388.17	-11199.27	0.23	1391950.89	3175976.15	40.407586	-104.868076
Last SLB_MWD Survey	17858.00	90.63	270.00	6979.60	11305.28	-2388.81	-11285.26	1.02	1391949.60	3175890.17	40.407584	-104.868385
Projection to Bit	17880.00	90.63	270.00	6979.36	11327.28	-2388.81	-11307.26	0.00	1391949.43	3175868.17	40.407584	-104.868464

Survey Type: Def Survey

Survey Error Model: ISCWSA Rev 0 *** 3-D 95.000% Confidence 2.7955 sigma

Survey Program:

Description	Part	MD From (ft)	MD To (ft)	EOU Freq (ft)	Hole Size	Casing Diameter (in)	Survey Tool Type	Borehole / Survey
	1	0.000	20.000	1/98.425	13.500	9.625	NAL_MWD_IFR1-Depth Only	Original Hole / Bost Farm 34N-11C-L IFR 0' to 17880' Definitive
	1	20.000	1832.000	Act Stns	13.500	9.625	NAL_MWD_IFR1	Original Hole / Bost Farm 34N-11C-L IFR 0' to 17880' Definitive
	1	1832.000	17880.000	Act Stns	8.500	5.500	NAL_MWD_IFR1+MS	Original Hole / Bost Farm 34N-11C-L IFR 0' to 17880' Definitive