

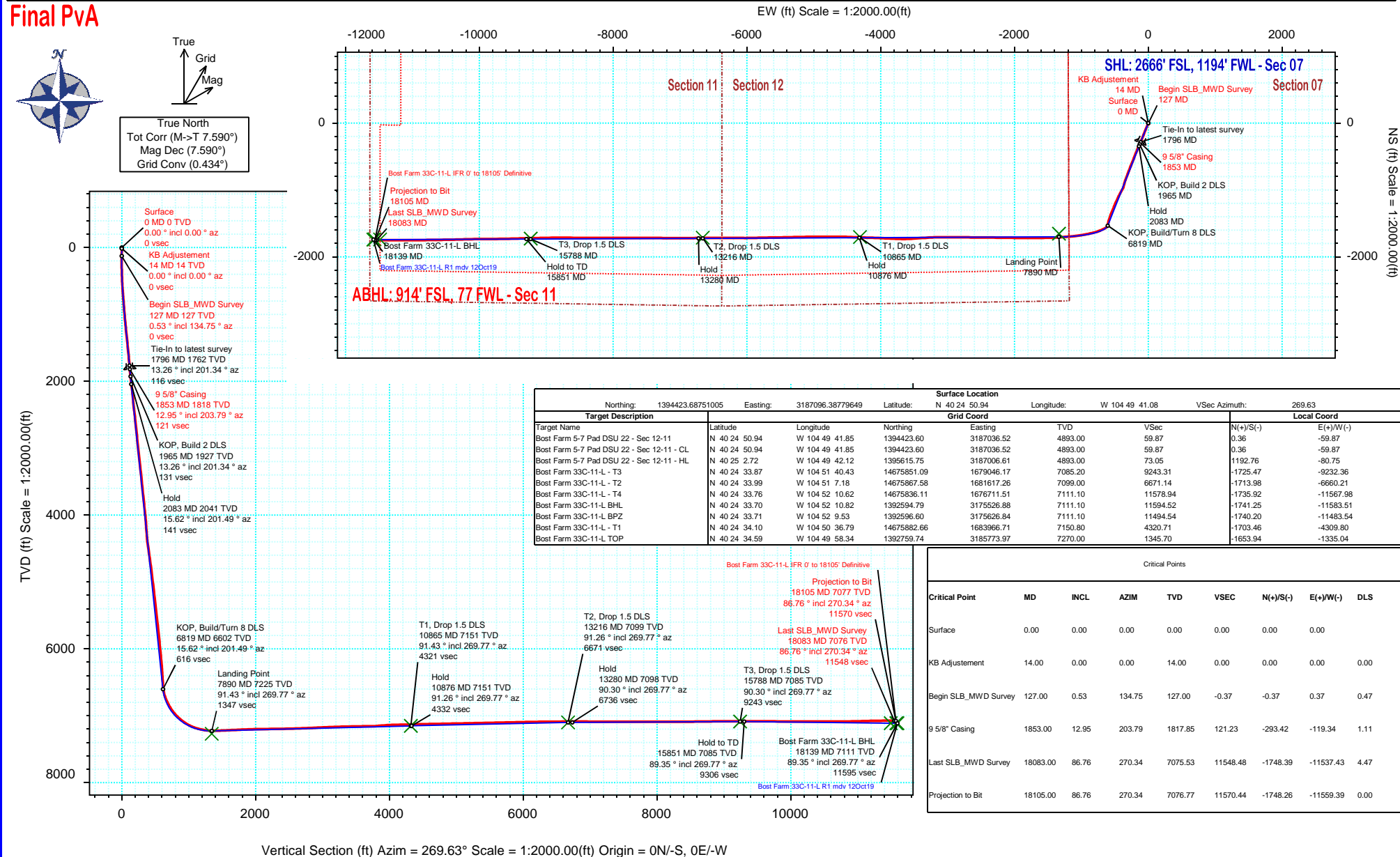


SRC Energy

Schlumberger

Borehole:	Well:	Field:	Structure:
Original Hole	Bost Farm 33C-11-L	CO, Weld County (NAD 83 NZ) - SRC	SRC Energy 07-05N-66W (Bost Farm 5-7 Pad DSU 20)

Gravity & Magnetic Parameters				Surface Location				Miscellaneous			
Model:	Magvar IFR	Dip:	66.59°	Date:	13-Oct-2019	Lat:	N 40 24 50.94	Northing:	1394423.69ftUS	Grid Conv:	0.4342°
MagDec:	7.59°	FS:	52205NT	Gravity FS:	999.026mgn (9.80665 Based)	Lon:	W 104 49 41.08	Easting:	3187096.39ftUS	Scale Fact:	0.9999609
								Slot: Bost Farm 33C-11-L			
								TVD Ref: KB 20ft(4893ft above MSL)			
								Plan: Bost Farm 33C-11-L IFR 0' to 18105' Definitive			



Bost Farm 33C-11-L IFR 0' to 18105' Definitive Survey Geodetic Report

(Def Survey)

Report Date: December 03, 2019 - 01:25 PM
Client: SRC Energy
Field: CO, Weld County (NAD 83 NZ) - SRC
Structure / Slot: SRC Energy 07-05N-66W (Bost Farm 5-7 Pad DSU 20) / Bost Farm 33C-11-L
Well: Bost Farm 33C-11-L
Borehole: Original Hole
UWI / API#: Unknown / 05-123-50255
Survey Name: Bost Farm 33C-11-L IFR 0' to 18105' Definitive
Survey Date: May 29, 2019
Tort / AHD / DDI / ERD Ratio: 243.196° / 12642.211 ft / 6.887 / 1.750
Coordinate Reference System: NAD83 Colorado State Plane, Northern Zone, US Feet
Location Lat / Long: N 40° 24' 50.93640", W 104° 49' 41.08080"
Location Grid N/E Y/X: N 1394423.688 ftUS, E 3187096.388 ftUS
CRS Grid Convergence Angle: 0.4342°
Grid Scale Factor: 0.9999609
Version / Patch: 2.10.787.0

Survey / DLS Computation: Minimum Curvature / Lubinski
Vertical Section Azimuth: 269.630° (True North)
Vertical Section Origin: 0.000 ft, 0.000 ft
TVD Reference Datum: KB 20ft
TVD Reference Elevation: 4893.000 ft above MSL
Seabed / Ground Elevation: 4873.000 ft above MSL
Magnetic Declination: 7.590°
Total Gravity Field Strength: 999.0260mgn (9.80665 Based)
Gravity Model: GARM
Total Magnetic Field Strength: 52205.000 nT
Magnetic Dip Angle: 66.590°
Declination Date: October 13, 2019
Magnetic Declination Model: Magvar IFR
North Reference: True North
Grid Convergence Used: 0.0000°
Total Corr Mag North-True North: 7.5900°
Local Coord Referenced To: Well Head

Comments	MD (ft)	Incl (°)	Azim True (°)	TVD (ft)	VSEC (ft)	NS (ft)	EW (ft)	DLS (°/100ft)	Northing (ftUS)	Easting (ftUS)	Latitude (°)	Longitude (°)
Surface	0.00	0.00	0.00	0.00	0.00	0.00	0.00	N/A	1394423.69	3187096.39	40.414149	-104.828078
KB Adjustment	14.00	0.00	0.00	14.00	0.00	0.00	0.00	0.00	1394423.69	3187096.39	40.414149	-104.828078
Begin SLB_MWD Survey	127.00	0.53	134.75	127.00	-0.37	-0.37	0.37	0.47	1394423.32	3187096.76	40.414148	-104.828077
9 5/8" Casing	215.00	1.37	173.53	214.99	-0.77	-1.70	0.78	1.15	1394421.99	3187097.18	40.414144	-104.828075
	307.00	2.70	197.86	306.93	-0.21	-4.86	0.24	1.69	1394418.83	3187096.66	40.414136	-104.828077
	397.00	4.29	203.41	396.76	1.81	-9.96	-1.75	1.80	1394413.71	3187094.71	40.414122	-104.828084
	487.00	5.88	205.04	486.40	5.15	-17.23	-5.04	1.77	1394406.42	3187091.48	40.414102	-104.828096
	577.00	7.38	207.29	575.80	9.81	-26.54	-9.64	1.69	1394397.07	3187086.95	40.414076	-104.828113
	667.00	9.15	205.92	664.86	15.66	-38.12	-15.42	1.98	1394385.46	3187081.26	40.414044	-104.828133
	757.00	10.65	204.91	753.52	22.39	-52.10	-22.05	1.68	1394371.43	3187074.73	40.414006	-104.828157
	847.00	11.27	201.78	841.87	29.25	-67.81	-28.82	0.95	1394355.67	3187068.09	40.413963	-104.828181
	937.00	12.11	201.60	930.01	36.10	-84.75	-35.55	0.93	1394338.67	3187061.48	40.413916	-104.828206
	1027.00	12.95	202.57	1017.86	43.56	-102.84	-42.90	0.96	1394320.53	3187054.27	40.413867	-104.828232
	1117.00	14.10	203.45	1105.37	51.92	-122.21	-51.13	1.30	1394301.10	3187046.18	40.413814	-104.828262
	1207.00	14.98	198.52	1192.49	60.12	-143.30	-59.19	1.69	1394279.95	3187038.29	40.413756	-104.828291
	1297.00	15.78	202.09	1279.26	68.56	-165.67	-67.49	1.38	1394257.52	3187030.16	40.413694	-104.828320
	1387.00	15.38	201.82	1365.96	77.74	-188.09	-76.53	0.45	1394235.03	3187021.29	40.413633	-104.828353
	1477.00	14.67	201.65	1452.88	86.52	-209.76	-85.17	0.79	1394213.30	3187012.82	40.413573	-104.828384
	1567.00	13.70	202.66	1540.13	94.96	-230.19	-93.48	1.11	1394192.81	3187004.66	40.413517	-104.828414
	1657.00	14.41	202.04	1627.44	103.40	-250.40	-101.79	0.81	1394172.53	3186996.51	40.413462	-104.828444
	1747.00	13.92	202.31	1714.70	111.85	-270.80	-110.10	0.55	1394152.07	3186988.35	40.413406	-104.828473
	1796.00	13.26	201.34	1762.33	116.20	-281.49	-114.38	1.42	1394141.35	3186984.15	40.413376	-104.828489
	1853.00	12.95	203.79	1817.85	121.23	-293.42	-119.34	1.11	1394129.38	3186979.28	40.413344	-104.828507
	1869.00	12.87	204.50	1833.44	122.71	-296.68	-120.80	1.11	1394126.11	3186977.84	40.413335	-104.828512
	1961.00	13.37	204.20	1923.04	131.44	-315.71	-129.41	0.55	1394107.02	3186969.38	40.413282	-104.828543
	2055.00	13.51	206.05	2014.47	140.85	-335.49	-138.69	0.48	1394087.17	3186960.25	40.413228	-104.828576
	2148.00	15.02	207.48	2104.60	151.31	-355.94	-149.02	1.67	1394066.65	3186950.08	40.413172	-104.828613
	2241.00	15.00	200.19	2194.43	161.17	-377.93	-158.73	2.03	1394044.59	3186940.53	40.413112	-104.828648
	2334.00	14.62	201.94	2284.34	169.85	-400.11	-167.27	0.63	1394022.34	3186932.16	40.413051	-104.828679
	2428.00	15.10	204.13	2375.20	179.43	-422.29	-176.71	0.79	1394000.09	3186922.89	40.412990	-104.828713
	2521.00	16.23	203.92	2464.74	189.80	-445.22	-186.93	1.22	1393977.08	3186912.84	40.412927	-104.828749
	2614.00	16.11	198.92	2554.07	199.41	-469.31	-196.39	1.50	1393952.92	3186903.57	40.412861	-104.828783
	2707.00	15.94	200.16	2643.45	208.15	-493.50	-204.97	0.41	1393928.67	3186895.17	40.412794	-104.828814
	2801.00	16.57	199.86	2733.70	217.31	-518.23	-213.97	0.68	1393903.88	3186886.36	40.412727	-104.828846
	2893.00	15.62	202.33	2822.09	226.63	-542.02	-223.14	1.27	1393880.01	3186877.37	40.412661	-104.828879
	2986.00	15.86	201.40	2911.60	236.18	-565.44	-232.53	0.37	1393856.53	3186868.16	40.412597	-104.828913
	3079.00	16.25	201.03	3000.98	245.64	-589.41	-241.84	0.43	1393832.48	3186859.03	40.412531	-104.828946
	3172.00	15.68	201.26	3090.39	255.02	-613.27	-251.06	0.62	1393808.56	3186849.99	40.412466	-104.828980
	3265.00	15.67	202.92	3179.93	264.62	-636.55	-260.51	0.48	1393785.21	3186840.72	40.412402	-104.829014
	3358.00	16.29	201.76	3269.34	274.50	-660.23	-270.24	0.75	1393761.45	3186831.17	40.412337	-104.829048
	3450.00	16.35	201.28	3357.63	284.13	-684.28	-279.72	0.16	1393737.33	3186821.87	40.412271	-104.829082
	3544.00	15.95	200.12	3447.92	293.54	-708.74	-288.96	0.55	1393712.81	3186812.81	40.412204	-104.829116
	3637.00	15.95	200.53	3537.34	302.57	-732.70	-297.84	0.12	1393688.78	3186804.12	40.412138	-104.829148
	3731.00	16.17	200.72	3627.67	311.88	-757.04	-307.00	0.24	1393664.37	3186795.14	40.412071	-104.829180
	3823.00	16.37	199.96	3715.99	321.00	-781.21	-315.96	0.32	1393640.14	3186786.37	40.412005	-104.829213
	3915.00	16.09	201.15	3804.32	330.18	-805.29	-324.99	0.47	1393616.00	3186777.53	40.411939	-104.829245
	4008.00	16.42	201.30	3893.60	339.76	-829.55	-334.41	0.36	1393591.66	3186768.29	40.411872	-104.829279
	4101.00	16.38	200.83	3982.82	349.36	-854.05	-343.85	0.15	1393567.09	3186759.03	40.411805	-104.829313
	4195.00	16.08	195.93	4073.08	357.80	-878.96	-352.13	1.49	1393542.12	3186750.94	40.411736	-104.829343
	4287.00	16.06	192.33	4161.48	364.18	-903.65	-358.35	1.08	1393517.39	3186744.91	40.411669	-104.829365
	4380.00	16.09	196.37	4250.85	370.72	-928.58	-364.73	1.20	1393492.41	3186738.72	40.411600	-104.829388
	4473.00	16.02	193.82	4340.22	377.58	-953.41	-371.43	0.76	1393467.53	3186732.21	40.411532	-104.829412
	4567.00	16.17	209.88	4430.58	387.35	-977.36	-381.05	4.72	1393443.51	3186722.77	40.411466	-104.829446
4659.00	16.07	210.82	4518.97	400.40	-999.40	-393.96	0.30	1393421.37	3186710.03	40.411406	-104.829493	
4752.00	16.09	208.86	4608.33	413.36	-1021.75	-406.77	0.58	1393398.93	3186697.39	40.411344	-104.829539	
4845.00	15.69	208.36	4697.78	425.70	-1044.10	-418.96	0.45	1393376.49	3186685.36	40.411283	-104.829582	
4937.00	16.00	204.57	4786.28	437.02	-1066.58	-430.15	1.17	1393353.93	3186674.35	40.411221	-104.829623	
5030.00	15.13	206.91	4875.87	447.99	-1089.06	-440.97	1.15	1393331.37	3186663.70	40.411160	-104.829662	
5124.00	16.18	205.43	4966.38	459.32	-1111.82	-452.15	1.20	1393308.51	3186652.70	40.411097	-104.829702	
5218.00	15.71	203.81	5056.77	470.23	-1135.30	-462.91	0.69	1393284.96	3186642.12	40.411033	-104.829740	
5311.00	15.92	204.81	5146.25	480.81	-1158.39	-473.34	0.37	1393261.79	3186631.86	40.410969	-104.829778	
5406.00	15.91	203.76	5237.61	491.68	-1182.14	-484.06	0.30	1393237.97	3186621.32	40.410904	-104.829816	
5501.00	15.42	203.43	5329.08	502.10	-1205.64	-494.32	0.52	1393214.38	3186611.23	40.410840	-104.829853	
5596.00	15.94	202.56	5420.54	512.28	-1229.28	-504.35	0.60	1393190.67	3186601.39	40.410775	-104.829889	
5689.00	15.02	202.65	5510.17	521.97	-1252.19	-513.89	0.99	1393167.69	3186592.02	40.410712	-104.829923	
5782.00	15.66	203.69	5599.85	531.80	-1274.81	-523.57	0.75	1393145.00	3186582.51	40.410650	-104.829958	
5874.00	15.50	203.73	5688.47	541.88	-1297.43	-533.51	0.17	1393122.30	3186572.74	40.410588	-104.829994	
5968.00	15.25	202.02	5779.11	551.72	-1320.39	-543.20	0.55	1393099.27	3186563.23	40.410525	-104.830029	
6060.00	15.52	200.01	5867.81	560.61	-1343.17	-551.95	0.65	1393076.42	3186554.65	40.410462	-104.830060	
6152.00	15.80	201.02	5956.40	569.47	-1366.43	-560.65	0.42	1393053.10	3186546.13	40.410398	-104.830091	
6246.00	15.98	197.28	6046.81	578.06	-1390.73	-569.09	1.11	1393028.74	3186537.88	40.410332	-104.830122	
6341.00	15.66	199.31	6138.21	586.34	-1415.32	-577.21	0.67	1393004.09	3186525.94	40.410264	-104.830151	
6438.00	15.83	199.04	6231.57	595.14	-1440.18	-585.86	0.19	1392979.17	3186521.48	40.410196	-104.830182	
6533.00	15.48	192.50	6323.05	602.27	-1464.81	-592.83	1.89	1392954.49	3186517.70	40.410128	-104.830207	
6626.00	15.84	192.29	6412.60	607.82	-1489.33	-598.22	0.39	1392929.93	3186509.50	40.410061	-104.830207	

Comments	MD (ft)	Incl (°)	Azim True (°)	TVD (ft)	VSEC (ft)	NS (ft)	EW (ft)	DLS (°/100ft)	Northing (ftUS)	Easting (ftUS)	Latitude (°)	Longitude (°)
	6718.00	15.46	192.21	6501.19	613.24	-1513.58	-603.48	0.41	1392905.64	3186504.42	40.409994	-104.830245
	6812.00	15.24	200.15	6591.85	620.30	-1537.43	-610.39	2.25	1392881.74	3186497.69	40.409929	-104.830270
	6905.00	19.31	232.60	6680.84	636.91	-1558.30	-626.86	11.07	1392860.75	3186481.38	40.409872	-104.830329
	6998.00	26.47	243.14	6766.49	667.79	-1577.03	-657.62	8.84	1392841.78	3186450.77	40.409820	-104.830439
	7090.00	30.80	245.44	6847.22	707.64	-1596.10	-697.35	4.86	1392822.42	3186411.18	40.409768	-104.830582
	7185.00	37.47	250.00	6925.83	757.11	-1616.11	-746.69	7.52	1392802.03	3186361.99	40.409713	-104.830759
	7278.00	44.13	255.39	6996.21	815.22	-1633.98	-804.69	8.10	1392783.72	3186304.14	40.409664	-104.830968
	7371.00	51.82	257.82	7058.43	882.49	-1649.89	-871.85	8.49	1392767.31	3186237.10	40.409620	-104.831209
	7464.00	57.70	259.10	7112.07	956.98	-1665.04	-946.25	6.42	1392751.59	3186162.82	40.409579	-104.831476
	7557.00	65.84	261.67	7156.02	1037.79	-1678.65	-1026.97	9.08	1392737.38	3186082.21	40.409541	-104.831766
	7649.00	74.01	263.87	7187.58	1123.50	-1689.47	-1112.62	9.16	1392725.91	3185996.65	40.409512	-104.832073
	7742.00	78.50	265.67	7209.67	1213.49	-1697.69	-1202.55	5.18	1392717.01	3185906.78	40.409489	-104.832396
	7834.00	86.37	266.39	7221.78	1304.44	-1703.99	-1293.46	8.59	1392710.01	3185815.93	40.409472	-104.832723
	7927.00	91.45	265.92	7223.54	1397.22	-1710.23	-1386.20	5.49	1392703.08	3185723.24	40.409455	-104.833056
	8019.00	92.17	269.74	7220.64	1489.11	-1713.71	-1478.07	4.22	1392698.90	3185631.40	40.409445	-104.833386
	8113.00	92.63	269.23	7216.70	1583.03	-1714.55	-1571.99	0.73	1392697.34	3185537.50	40.409443	-104.833723
	8205.00	92.74	269.79	7212.39	1674.92	-1715.34	-1663.88	0.62	1392695.86	3185445.62	40.409440	-104.834053
	8298.00	92.63	269.42	7208.03	1767.82	-1715.98	-1756.78	0.41	1392694.52	3185352.73	40.409439	-104.834386
	8391.00	92.02	270.24	7204.26	1860.74	-1716.25	-1849.70	1.10	1392693.54	3185259.82	40.409438	-104.834720
	8484.00	91.57	270.48	7201.35	1953.69	-1715.67	-1942.65	0.55	1392693.42	3185166.87	40.409439	-104.835054
	8577.00	90.74	271.13	7199.47	2046.65	-1714.36	-2035.62	1.13	1392694.02	3185073.90	40.409443	-104.835388
	8670.00	90.74	270.42	7198.27	2139.62	-1713.11	-2128.61	0.76	1392694.57	3184980.91	40.409446	-104.835722
	8763.00	90.80	270.68	7197.02	2232.60	-1712.21	-2221.59	0.29	1392694.76	3184887.92	40.409449	-104.836055
	8856.00	90.62	270.93	7195.87	2325.58	-1710.91	-2314.58	0.33	1392695.36	3184794.94	40.409452	-104.836389
	8949.00	91.26	270.64	7194.34	2418.54	-1709.63	-2407.55	0.76	1392695.93	3184701.96	40.409456	-104.836723
	9041.00	91.42	270.49	7192.19	2510.51	-1708.73	-2499.52	0.24	1392696.14	3184609.98	40.409458	-104.837054
	9135.00	91.44	270.20	7189.85	2604.47	-1708.16	-2593.49	0.31	1392696.00	3184516.02	40.409460	-104.837391
	9228.00	92.35	270.46	7186.77	2697.41	-1707.62	-2686.44	1.02	1392695.83	3184423.07	40.409461	-104.837725
	9320.00	92.47	270.98	7182.90	2789.31	-1706.47	-2778.35	0.58	1392696.29	3184331.16	40.409464	-104.838055
	9412.00	92.35	270.80	7179.04	2881.21	-1705.04	-2870.26	0.24	1392697.02	3184239.25	40.409468	-104.838385
	9506.00	92.32	269.14	7175.21	2975.13	-1705.09	-2964.18	1.76	1392696.26	3184145.34	40.409468	-104.838722
	9598.00	92.46	269.35	7171.37	3067.04	-1706.30	-3056.09	0.27	1392694.35	3184053.44	40.409465	-104.839052
	9691.00	92.43	270.11	7167.40	3159.96	-1706.74	-3149.00	0.82	1392693.21	3183960.54	40.409464	-104.839386
	9784.00	91.41	266.90	7164.28	3252.88	-1709.16	-3241.91	3.62	1392690.08	3183867.66	40.409457	-104.839719
	9878.00	91.01	266.29	7162.30	3346.72	-1714.75	-3335.72	0.78	1392683.79	3183773.89	40.409442	-104.840056
	9970.00	91.20	266.38	7160.53	3438.55	-1720.63	-3427.51	0.23	1392677.21	3183682.15	40.409425	-104.840386
	10063.00	91.16	266.40	7158.61	3531.38	-1726.48	-3520.31	0.05	1392670.65	3183589.41	40.409409	-104.840719
	10156.00	90.83	268.14	7156.99	3624.29	-1730.91	-3613.19	1.90	1392665.52	3183496.57	40.409397	-104.841053
	10248.00	89.87	271.97	7156.43	3716.27	-1730.82	-3705.17	4.29	1392664.91	3183404.60	40.409397	-104.841383
	10340.00	94.39	272.72	7153.01	3808.07	-1727.06	-3797.00	4.98	1392667.98	3183312.74	40.409408	-104.841713
	10388.00	94.43	272.02	7149.32	3855.88	-1725.08	-3844.82	1.46	1392669.59	3183264.91	40.409413	-104.841884
	10480.00	94.45	272.53	7142.20	3947.50	-1721.44	-3936.47	0.55	1392672.54	3183173.24	40.409423	-104.842213
	10573.00	91.97	272.30	7136.99	4040.24	-1717.53	-4029.23	2.68	1392675.75	3183080.45	40.409434	-104.842547
	10666.00	91.32	271.64	7134.32	4133.12	-1714.33	-4122.14	1.00	1392678.24	3182987.53	40.409442	-104.842880
	10759.00	91.33	272.25	7132.17	4226.02	-1711.18	-4215.06	0.66	1392680.69	3182894.59	40.409451	-104.843214
	10851.00	91.20	271.46	7130.14	4317.93	-1708.20	-4306.99	0.87	1392682.97	3182802.64	40.409459	-104.843544
	10944.00	91.24	272.32	7128.16	4410.84	-1705.13	-4399.92	0.93	1392685.33	3182709.70	40.409468	-104.843878
	11038.00	91.33	272.34	7126.05	4504.71	-1701.31	-4493.81	0.10	1392688.44	3182615.78	40.409478	-104.844215
	11132.00	91.25	270.21	7123.94	4598.64	-1699.22	-4587.76	2.27	1392689.82	3182521.82	40.409484	-104.844552
	11225.00	90.82	269.45	7122.26	4691.62	-1699.50	-4680.75	0.94	1392688.84	3182428.85	40.409483	-104.844886
	11318.00	91.30	270.10	7120.54	4784.61	-1699.86	-4773.73	0.87	1392687.77	3182335.87	40.409482	-104.845220
	11410.00	91.22	270.14	7118.51	4876.58	-1699.67	-4865.71	0.10	1392687.27	3182243.90	40.409482	-104.845550
	11502.00	91.12	269.35	7116.64	4968.56	-1700.08	-4957.68	0.87	1392686.16	3182151.93	40.409481	-104.845880
	11595.00	91.14	269.91	7114.80	5061.54	-1700.68	-5050.66	0.60	1392684.86	3182058.96	40.409479	-104.846214
	11687.00	91.24	269.05	7112.89	5153.52	-1701.52	-5142.64	0.94	1392683.32	3181967.00	40.409477	-104.846545
	11779.00	91.21	269.14	7110.92	5245.50	-1702.97	-5234.61	0.10	1392681.18	3181875.05	40.409473	-104.846875
	11872.00	91.07	268.80	7109.07	5338.47	-1704.64	-5327.57	0.40	1392678.80	3181782.10	40.409468	-104.847209
	11964.00	91.37	268.93	7107.12	5430.44	-1706.46	-5419.53	0.36	1392676.28	3181690.16	40.409463	-104.847539
	12057.00	91.24	268.39	7105.00	5523.40	-1708.64	-5512.48	0.60	1392673.40	3181597.23	40.409457	-104.847873
	12151.00	91.34	269.57	7102.88	5617.37	-1710.31	-5606.44	1.26	1392671.02	3181503.29	40.409453	-104.848210
	12244.00	91.22	268.77	7100.80	5710.35	-1711.66	-5699.41	0.87	1392668.97	3181410.34	40.409449	-104.848544
	12338.00	91.29	269.22	7098.74	5804.32	-1713.30	-5793.37	0.48	1392666.61	3181316.40	40.409444	-104.848881
	12433.00	90.96	268.03	7096.88	5899.28	-1715.58	-5888.33	1.30	1392663.61	3181221.47	40.409438	-104.849222
	12525.00	91.31	269.42	7095.06	5991.25	-1717.63	-5980.28	1.56	1392660.86	3181129.54	40.409432	-104.849552
	12618.00	91.10	270.81	7093.10	6084.22	-1717.44	-6073.26	1.51	1392660.35	3181036.57	40.409433	-104.849886
	12710.00	91.13	270.13	7091.31	6176.20	-1716.69	-6165.24	0.74	1392660.40	3180944.59	40.409435	-104.850217
	12804.00	90.77	270.04	7089.75	6270.18	-1716.55	-6259.23	0.39	1392659.83	3180850.61	40.409435	-104.850554
	12897.00	90.22	270.43	7088.95	6363.17	-1716.17	-6352.22	0.72	1392659.51	3180757.61	40.409436	-104.850888
	12990.00	90.11	269.51	7088.68	6456.17	-1716.22	-6445.22	1.00	1392658.76	3180664.62	40.409436	-104.851222
	13082.00	90.98	270.28	7087.81	6548.16	-1716.39	-6537.21	1.26	1392657.89	3180572.64	40.409435	-104.851552
	13175.00	91.24	270.12	7086.00	6641.14	-1716.06	-6630.20	0.33	1392657.51	3180479.66	40.409436	-104.851886
	13268.00	90.19	268.87	7084.84	6734.13	-1716.88	-6723.18	1.76	1392655.99	3180386.68	40.409434	-104.852220
	13454.00	88.76	270.44	7086.55	6920.11	-1718.00	-6909.16	1.14	1392653.46	3180200.73	40.409431	-104.852888
	13547.00	88.61	269.24	7088.68	7013.08	-1718.26	-7002.13	1.30	1392652.49	3180107.76	40.409430	-104.853222
	13641.00	90.19	270.31	7089.67	7107.07	-1718.63	-7096.12	2.03	1392651.41	3180013.78	40.409429	-104.853559
	13736.00	90.14	269.94	7089.39	7202.07	-1718.42	-7191.12	0.39	1392650.90	3179919.78	40.409429	-104.853900
	13830.00	90.29	270.96	7089.04	7296.06	-1717.68	-7285.12	1.10	1392650.32	3179824.79	40.409431	-104.854238
	13924.00	90.2										

Comments	MD (ft)	Incl (°)	Azim True (°)	TVD (ft)	VSEC (ft)	NS (ft)	EW (ft)	DLS (°/100ft)	Northing (ftUS)	Easting (ftUS)	Latitude (°)	Longitude (°)
	16893.00	89.75	268.11	7087.15	10358.71	-1740.67	-10347.68	0.70	1392604.74	3176762.62	40.409365	-104.865235
	16986.00	90.17	269.04	7087.22	10451.69	-1742.98	-10440.65	1.10	1392601.72	3176669.67	40.409359	-104.865569
	17078.00	90.07	269.42	7087.02	10543.69	-1744.22	-10532.64	0.43	1392599.79	3176577.69	40.409355	-104.865899
	17170.00	90.27	269.69	7086.75	10635.69	-1744.93	-10624.64	0.37	1392598.37	3176485.71	40.409353	-104.866230
	17263.00	90.24	268.65	7086.34	10728.68	-1746.28	-10717.63	1.12	1392596.32	3176392.74	40.409349	-104.866564
	17355.00	90.92	268.93	7085.41	10820.67	-1748.22	-10809.60	0.80	1392593.68	3176300.78	40.409344	-104.866894
	17448.00	91.30	269.74	7083.61	10913.65	-1749.30	-10902.58	0.96	1392591.90	3176207.82	40.409341	-104.867228
	17541.00	91.32	269.87	7081.48	11006.62	-1749.62	-10995.55	0.14	1392590.88	3176114.86	40.409340	-104.867562
	17634.00	91.60	270.12	7079.11	11099.59	-1749.63	-11088.52	0.40	1392590.17	3176021.89	40.409340	-104.867896
	17727.00	91.03	270.00	7076.98	11192.56	-1749.53	-11181.50	0.63	1392589.56	3175928.93	40.409340	-104.868229
	17820.00	91.02	270.76	7075.31	11285.54	-1748.91	-11274.48	0.82	1392589.47	3175835.94	40.409341	-104.868563
	17912.00	90.55	270.18	7074.05	11377.52	-1748.16	-11366.47	0.81	1392589.53	3175743.96	40.409343	-104.868894
	18004.00	90.21	269.59	7073.44	11469.52	-1748.34	-11458.47	0.74	1392588.65	3175651.97	40.409343	-104.869224
Last SLB_MWD Survey	18083.00	86.76	270.34	7075.53	11548.48	-1748.39	-11537.43	4.47	1392588.00	3175573.01	40.409342	-104.869507
Projection to Bit	18105.00	86.76	270.34	7076.77	11570.44	-1748.26	-11559.39	0.00	1392587.96	3175551.05	40.409343	-104.869586

Survey Type: Def Survey

Survey Error Model: ISCWSA Rev 0 *** 3-D 95.000% Confidence 2.7955 sigma

Survey Program:

Description	Part	MD From (ft)	MD To (ft)	EOU Freq (ft)	Hole Size	Casing Diameter (in)	Survey Tool Type	Borehole / Survey
	1	0.000	20.000	1/98.425	13.500	9.625	NAL_MWD_IFR1-Depth Only	Original Hole / Bost Farm 33C-11-L IFR 0' to 18105' Definitive
	1	20.000	1853.000	Act Stns	13.500	9.625	NAL_MWD_IFR1	Original Hole / Bost Farm 33C-11-L IFR 0' to 18105' Definitive
	1	1853.000	18105.000	Act Stns	8.500	5.500	NAL_MWD_IFR1+MS	Original Hole / Bost Farm 33C-11-L IFR 0' to 18105' Definitive