



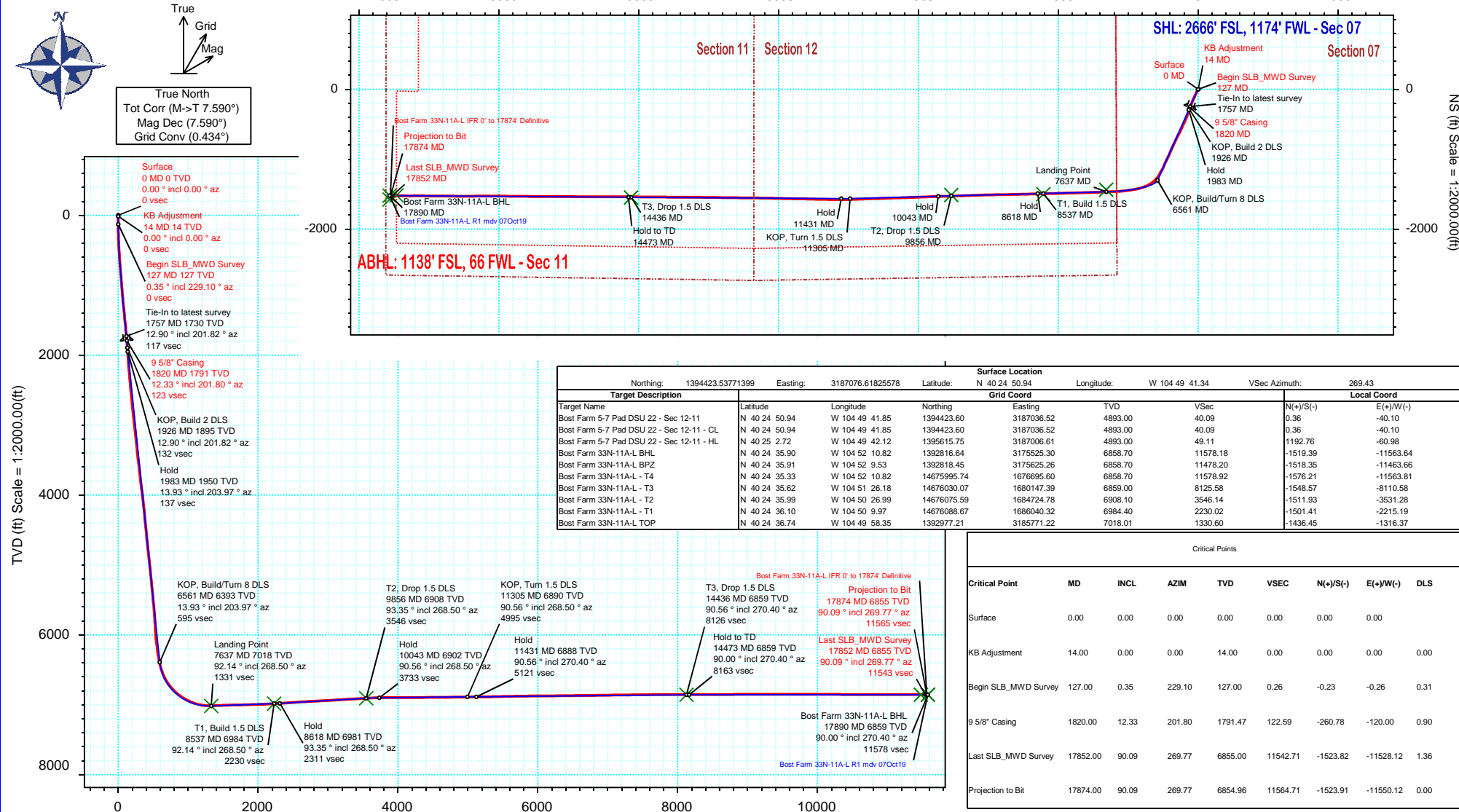
# SRC Energy

# Schlumberger

Borehole:	Well:	Field:	Structure:
Original Hole	Bost Farm 33N-11A-L	CO, Weld County (NAD 83 NZ) - SRC	SRC Energy 07-05N-66W (Bost Farm 5-7 Pad DSU 20)

Gravity & Magnetic Parameters						Surface Location				NAD83 Colorado State Plane, Northern Zone, US Feet				Miscellaneous	
Model:	Magvar IFR	Dip:	66.59°	Date:	07-Oct-2019	Lat:	N 40 24 50.94	Northing:	1394423.54ftUS	Grid Conv:	0.4341°	Slot:	Bost Farm 33N-11A-L	TVD Ref:	KB 20ft(4893ft above MSL)
MagDec:	7.59°	FS:	52207nT	Gravity FS:	999.026mgn (9.80665 Based)	Lon:	W 104 49 41.34	Easting:	3187076.62ftUS	Scale Fact:	0.9999609	Plan:	Bost Farm 33N-11A-L IFR 0' to 17874' Definitive		

## Final PvA



Vertical Section (ft) Azim = 269.43° Scale = 1:2000.00(ft) Origin = 0N/-S, 0E/-W

# Bost Farm 33N-11A-L IFR 0' to 17874' Definitive Survey Geodetic Report

(Def Survey)

**Report Date:** December 03, 2019 - 02:42 PM  
**Client:** SRC Energy  
**Field:** CO, Weld County (NAD 83 NZ) - SRC  
**Structure / Slot:** SRC Energy 07-05N-66W (Bost Farm 5-7 Pad DSU 20) / Bost Farm 33N-11A-L  
**Well:** Bost Farm 33N-11A-L  
**Borehole:** Original Hole  
**UWI / API#:** Unknown / 05-123-50253  
**Survey Name:** Bost Farm 33N-11A-L IFR 0' to 17874' Definitive  
**Survey Date:** May 29, 2019  
**Tort / AHD / DDI / ERD Ratio:** 229.748' / 12414.456 ft / 6.861' / 1.770  
**Coordinate Reference System:** NAD83 Colorado State Plane, Northern Zone, US Feet  
**Location Lat / Long:** N 40° 24' 50.93640", W 104° 49' 41.33640"  
**Location Grid N/E Y/X:** N 1394423.538 ftUS, E 3187076.618 ftUS  
**CRS Grid Convergence Angle:** 0.4341 °  
**Grid Scale Factor:** 0.9999609  
**Version / Patch:** 2.10.787.0

**Survey / DLS Computation:** Minimum Curvature / Lubinski  
**Vertical Section Azimuth:** 269.430 ° (True North)  
**Vertical Section Origin:** 0.000 ft, 0.000 ft  
**TVD Reference Datum:** KB 20ft  
**TVD Reference Elevation:** 4893.000 ft above MSL  
**Seabed / Ground Elevation:** 4873.000 ft above MSL  
**Magnetic Declination:** 7.590 °  
**Total Gravity Field Strength:** 999.0260mgn (9.80665 Based)  
**Gravity Model:** GARM  
**Total Magnetic Field Strength:** 52207.000 nT  
**Magnetic Dip Angle:** 66.590 °  
**Declination Date:** October 07, 2019  
**Magnetic Declination Model:** Magvar IFR  
**North Reference:** True North  
**Grid Convergence Used:** 0.0000 °  
**Total Corr Mag North-True North:** 7.5900 °  
**Local Coord Referenced To:** Well Head

Comments	MD (ft)	Incl (°)	Azim True (°)	TVD (ft)	VSEC (ft)	NS (ft)	EW (ft)	DLS (°/100ft)	Northing (ftUS)	Easting (ftUS)	Latitude (°)	Longitude (°)	
Surface	0.00	0.00	0.00	0.00	0.00	0.00	0.00	0.00	N/A	1394423.54	3187076.62	40.414149	-104.828149
KB Adjustment	14.00	0.00	0.00	14.00	0.00	0.00	0.00	0.00	1394423.54	3187076.62	40.414149	-104.828149	
Begin													
SLB_MWD	127.00	0.35	229.10	127.00	0.26	-0.23	-0.26	0.31	1394423.31	3187076.36	40.414148	-104.828150	
Survey													
	215.00	1.50	224.56	214.99	1.28	-1.22	-1.27	1.31	1394422.31	3187075.36	40.414146	-104.828154	
	307.00	3.14	213.72	306.91	3.56	-4.18	-3.52	1.84	1394419.33	3187073.13	40.414138	-104.828162	
	397.00	5.04	208.43	396.68	6.86	-9.70	-6.77	2.15	1394413.78	3187069.93	40.414122	-104.828173	
	487.00	6.27	211.17	486.24	11.37	-17.39	-11.19	1.40	1394406.07	3187065.56	40.414101	-104.828189	
	577.00	7.69	206.05	575.57	16.65	-27.00	-16.38	1.72	1394396.41	3187060.44	40.414075	-104.828208	
	667.00	9.63	205.22	664.54	22.62	-39.22	-22.23	2.16	1394384.15	3187054.68	40.414041	-104.828229	
	757.00	11.31	205.35	753.04	29.76	-54.01	-29.22	1.87	1394369.31	3187047.81	40.414001	-104.828254	
	847.00	11.05	203.81	841.33	37.17	-69.88	-36.48	0.44	1394353.39	3187040.67	40.413957	-104.828280	
	937.00	10.47	204.42	929.74	44.19	-85.21	-43.34	0.66	1394338.00	3187033.92	40.413915	-104.828305	
	1027.00	10.08	203.90	1018.30	50.91	-99.86	-49.92	0.45	1394323.31	3187027.46	40.413875	-104.828328	
	1117.00	11.00	204.91	1106.78	57.86	-114.85	-56.72	1.04	1394308.27	3187020.77	40.413834	-104.828353	
	1207.00	11.93	205.48	1194.99	65.64	-131.03	-64.34	1.04	1394292.03	3187013.27	40.413789	-104.828380	
	1297.00	12.77	205.39	1282.90	74.08	-148.42	-72.61	0.93	1394274.58	3187005.14	40.413742	-104.828410	
	1387.00	13.70	204.20	1370.51	82.90	-167.12	-81.24	1.08	1394255.81	3186996.65	40.413690	-104.828441	
	1477.00	13.96	202.44	1457.90	91.61	-186.88	-89.75	0.55	1394235.99	3186988.29	40.413636	-104.828471	
	1567.00	13.57	201.69	1545.32	99.85	-206.73	-97.80	0.48	1394216.09	3186980.39	40.413582	-104.828500	
	1657.00	13.92	202.79	1632.74	108.14	-226.52	-105.90	0.49	1394196.23	3186972.44	40.413527	-104.828529	
	1747.00	13.12	202.71	1720.24	116.47	-245.92	-114.03	0.89	1394176.77	3186964.46	40.413474	-104.828559	
	1757.00	12.90	201.82	1729.99	117.35	-248.00	-114.89	2.98	1394174.68	3186963.62	40.413468	-104.828562	
9 5/8" Casing	1820.00	12.33	201.80	1791.47	122.59	-260.78	-120.00	0.90	1394161.87	3186958.60	40.413433	-104.828580	
	1867.00	11.91	201.78	1837.42	126.34	-269.94	-123.66	0.90	1394152.68	3186955.01	40.413408	-104.828593	
	1960.00	13.54	197.96	1928.13	133.45	-289.21	-130.58	1.97	1394133.36	3186948.24	40.413355	-104.828618	
	2054.00	13.69	195.61	2019.49	140.05	-310.39	-136.97	0.61	1394112.13	3186942.01	40.413297	-104.828641	
	2146.00	13.65	195.54	2108.89	146.09	-331.34	-142.80	0.05	1394091.14	3186936.33	40.413240	-104.828662	
	2240.00	13.55	201.93	2200.26	153.39	-352.24	-149.89	1.60	1394070.19	3186929.41	40.413182	-104.828687	
	2333.00	13.73	202.58	2290.63	161.89	-372.54	-158.20	0.25	1394049.83	3186921.26	40.413126	-104.828717	
	2427.00	13.19	199.16	2382.05	169.90	-392.97	-166.00	1.02	1394029.34	3186913.61	40.413070	-104.828745	
	2520.00	13.97	202.91	2472.45	177.96	-413.33	-173.85	1.26	1394008.92	3186905.91	40.413014	-104.828773	
	2613.00	13.16	203.39	2562.86	186.73	-433.39	-182.43	0.88	1393988.80	3186897.49	40.412959	-104.828804	
	2706.00	14.43	201.24	2653.17	195.33	-453.91	-190.83	1.47	1393968.22	3186889.24	40.412903	-104.828834	
	2799.00	14.41	204.00	2743.25	204.45	-475.28	-199.73	0.74	1393946.78	3186880.50	40.412844	-104.828866	
	2892.00	13.93	203.11	2833.42	213.76	-496.15	-208.83	0.57	1393925.84	3186871.56	40.412787	-104.828899	
	2985.00	13.88	206.14	2923.69	223.27	-516.46	-218.14	0.78	1393905.46	3186862.41	40.412731	-104.828932	
	3078.00	13.38	206.28	3014.07	233.14	-536.12	-227.82	0.54	1393885.73	3186852.88	40.412677	-104.828967	
	3171.00	13.81	202.84	3104.47	242.41	-556.00	-236.89	0.98	1393865.78	3186843.96	40.412623	-104.829000	
	3264.00	14.05	206.27	3194.73	251.92	-576.35	-246.20	0.92	1393845.36	3186834.81	40.412567	-104.829033	
	3357.00	13.10	208.00	3285.14	262.06	-595.78	-256.14	1.11	1393825.86	3186825.01	40.412514	-104.829069	
	3449.00	13.12	204.65	3374.74	271.49	-614.47	-265.39	0.83	1393807.10	3186815.90	40.412462	-104.829102	
	3542.00	14.25	208.35	3465.10	281.52	-634.14	-275.23	1.54	1393787.35	3186806.21	40.412408	-104.829137	
	3635.00	14.16	208.24	3555.26	292.54	-654.24	-286.05	0.10	1393767.18	3186795.55	40.412353	-104.829176	
	3730.00	14.32	206.98	3647.34	303.57	-674.94	-296.87	0.37	1393746.39	3186784.88	40.412296	-104.829215	
	3822.00	14.69	206.01	3736.40	314.06	-695.57	-307.15	0.48	1393725.69	3186774.76	40.412240	-104.829252	
	3914.00	14.35	205.67	3825.47	324.32	-716.33	-317.21	0.38	1393704.86	3186764.86	40.412183	-104.829288	
	4007.00	14.77	207.62	3915.48	335.01	-737.22	-327.69	0.69	1393683.89	3186754.53	40.412125	-104.829326	
	4100.00	14.59	203.70	4005.45	345.43	-758.45	-337.90	1.09	1393662.58	3186744.49	40.412067	-104.829362	
	4194.00	14.17	206.44	4096.50	355.52	-779.59	-347.78	0.85	1393641.37	3186734.77	40.412009	-104.829398	
	4286.00	14.66	205.14	4185.60	365.68	-800.21	-357.74	0.64	1393620.67	3186724.96	40.411952	-104.829434	
	4379.00	14.07	203.05	4275.70	375.32	-821.27	-367.17	0.84	1393599.55	3186715.70	40.411895	-104.829468	
	4472.00	14.14	203.05	4365.89	384.40	-842.12	-376.04	0.08	1393578.62	3186706.98	40.411837	-104.829499	
	4566.00	13.77	202.70	4457.12	393.42	-863.01	-384.85	0.40	1393557.67	3186698.33	40.411780	-104.829531	
	4658.00	13.58	204.25	4546.51	402.28	-882.96	-393.51	0.45	1393537.66	3186689.82	40.411725	-104.829562	
	4751.00	13.92	201.65	4636.85	411.09	-903.31	-402.13	0.76	1393517.24	3186681.36	40.411670	-104.829593	
	4843.00	13.87	205.21	4726.16	420.07	-923.57	-410.91	0.93	1393496.92	3186672.74	40.411614	-104.829625	
	4936.00	14.29	203.71	4816.36	429.64	-944.17	-420.27	0.60	1393476.25	3186663.53	40.411557	-104.829658	
	5029.00	14.12	205.79	4906.52	439.40	-964.89	-429.82	0.58	1393455.46	3186654.14	40.411500	-104.829692	
	5124.00	13.60	205.98	4998.75	449.54	-985.36	-439.75	0.55	1393434.91	3186644.36	40.411444	-104.829728	
	5217.00	13.24	206.29	5089.21	459.23	-1004.74	-449.26	0.39	1393415.46	3186635.00	40.411391	-104.829762	
	5310.00	11.40	208.84	5180.07	468.56	-1022.34	-458.41	2.06	1393397.79	3186625.98	40.411343	-104.829795	
	5405.00	13.70	204.87	5272.79	478.00	-1040.78	-467.67	2.58	1393379.29	3186616.86	40.411292	-104.829828	
	5500.00	13.18	201.65	5365.19	486.93	-1061.05	-476.40	0.96	1393358.95	3186608.29	40.411237	-104.829860	
	5595.00	13.18	203.51	5457.69	495.45	-1081.05	-484.72	0.45	1393338.89	3186600.13	40.411182	-104.829890	
	5688.00	13.62	204.19	5548.16	504.36	-1100.76	-493.43	0.50	1393319.12	3186591.66	40.411128	-104.829921	
	5781.00	11.54	202.45	5638.92	512.58	-1119.35	-501.47	2.27	1393300.47	3186583.66	40.411076	-104.829950	
	5873.00	8.97	204.09	5729.45	519.18	-1134.40	-507.92	2.81	1393285.37	3186573.33	40.411035	-104.829973	
	5966.00	6.45	209.76	5821.60	524.84	-1145.56	-513.47	2.83	1393274.17	3186571.86	40.411005	-104.829993	
	6059.00	4.59	218.97	5914.16	529.85	-1152.99	-518.40	2.21	1393266.71	3186566.99	40.410984	-104.830011	
	6152.00	9.23	211.94	6006.47	536.23	-1162.21	-524.69	5.06	1393257.43	3186560.77	40.410959	-104.830033	
	6246.00	13.01	210.83	6098.68	545.80	-1177.70	-534.11	4.03	1393241.87	3186551.47	40.410916	-104.830067	
	6341.00	15.70	207.76	6190.69	557.50	-1198.32	-546.61	3.02	1393221.17	3186540.13	40.410860	-104.830108	
	6438.00	18.03	208.61	6283.50	571.08	-1223.17	-558.94	2.33	1393196.22	3186526.99	40.410792	-104.830156	
	6532.00												

Comments	MD (ft)	Incl (°)	Azim True (°)	TVD (ft)	VSEC (ft)	NS (ft)	EW (ft)	DLS (°/100ft)	Northing (ftUS)	Easting (ftUS)	Latitude (°)	Longitude (°)
	6811.00	33.43	231.91	6624.89	668.83	-1332.40	-655.60	7.88	1393086.27	3186431.16	40.410492	-104.830503
	6904.00	39.00	239.69	6699.93	714.61	-1363.01	-701.09	7.76	1393055.31	3186385.91	40.410408	-104.830667
	6996.00	43.51	247.53	6769.12	769.20	-1389.76	-755.41	7.45	1393028.15	3186331.79	40.410334	-104.830862
	7090.00	50.06	254.48	6833.49	834.15	-1411.80	-820.15	8.80	1393005.62	3186267.22	40.410274	-104.831094
	7184.00	56.27	259.44	6889.84	907.56	-1428.63	-893.40	7.84	1392988.24	3186194.11	40.410228	-104.831357
	7276.00	63.28	261.49	6936.13	986.04	-1441.74	-971.74	7.86	1392974.53	3186115.87	40.410192	-104.831638
	7370.00	69.75	263.18	6973.57	1071.55	-1453.20	-1057.14	7.08	1392962.43	3186030.56	40.410160	-104.831945
	7463.00	77.52	266.93	6999.77	1160.44	-1460.83	-1145.96	9.21	1392954.13	3185941.81	40.410139	-104.832264
	7556.00	85.62	268.20	7013.39	1252.30	-1464.72	-1237.79	8.81	1392949.54	3185850.51	40.410128	-104.832594
	7648.00	92.53	267.01	7014.87	1344.19	-1468.57	-1329.64	7.62	1392945.00	3185758.19	40.410118	-104.832924
	7740.00	91.77	267.96	7011.42	1436.07	-1472.60	-1421.49	1.32	1392940.27	3185666.38	40.410107	-104.833253
	7833.00	91.43	268.42	7008.82	1529.01	-1475.54	-1514.41	0.61	1392936.63	3185573.07	40.410099	-104.833587
	7926.00	91.55	268.53	7006.41	1621.97	-1478.01	-1607.34	0.18	1392933.45	3185480.59	40.410092	-104.833921
	8112.00	91.22	268.71	7001.91	1807.89	-1482.49	-1793.23	0.20	1392927.57	3185294.74	40.410080	-104.834588
	8204.00	91.87	267.97	6999.43	1899.84	-1485.15	-1885.16	1.07	1392924.21	3185202.84	40.410072	-104.834918
	8297.00	91.22	268.60	6996.92	1992.79	-1487.94	-1978.08	0.97	1392920.72	3185109.95	40.410065	-104.835252
	8390.00	92.68	268.26	6993.76	2085.72	-1490.48	-2070.99	1.61	1392917.47	3185017.06	40.410058	-104.835586
	8483.00	93.56	268.89	6988.70	2178.57	-1492.79	-2163.82	1.16	1392914.46	3184924.25	40.410051	-104.835919
	8577.00	93.45	268.43	6982.95	2272.38	-1494.99	-2257.62	0.50	1392911.55	3184830.48	40.410045	-104.836256
	8668.00	93.72	268.37	6977.26	2363.19	-1497.52	-2348.41	0.30	1392908.33	3184739.72	40.410038	-104.836582
	8762.00	93.73	268.54	6971.15	2456.98	-1500.05	-2442.18	0.18	1392905.09	3184645.98	40.410031	-104.836919
	8855.00	93.52	268.81	6965.27	2549.78	-1502.20	-2534.97	0.37	1392902.24	3184553.21	40.410025	-104.837252
	8948.00	93.71	268.88	6959.41	2642.59	-1504.07	-2627.76	0.22	1392899.67	3184460.44	40.410020	-104.837585
	9040.00	92.85	269.02	6954.14	2734.44	-1505.75	-2719.59	0.95	1392897.29	3184368.62	40.410015	-104.837915
	9133.00	93.71	269.03	6948.82	2827.28	-1507.33	-2812.43	0.92	1392895.00	3184275.81	40.410011	-104.838248
	9227.00	92.90	269.32	6943.40	2921.13	-1508.68	-2906.26	0.92	1392892.94	3184181.99	40.410007	-104.838585
	9319.00	93.31	268.75	6938.42	3012.99	-1510.23	-2998.11	0.76	1392890.70	3184090.16	40.410003	-104.838915
	9411.00	92.98	268.39	6933.37	3104.84	-1512.52	-3089.94	0.53	1392887.71	3183998.35	40.409997	-104.839245
	9505.00	93.42	267.58	6928.13	3198.66	-1515.82	-3183.74	0.98	1392883.70	3183904.59	40.409988	-104.839582
	9597.00	93.39	268.25	6922.66	3290.47	-1519.16	-3275.52	0.73	1392879.67	3183812.84	40.409978	-104.839911
	9690.00	93.23	267.76	6917.29	3383.28	-1522.39	-3368.30	0.55	1392875.73	3183720.08	40.409970	-104.840244
	9784.00	93.06	268.11	6912.14	3477.11	-1525.78	-3462.10	0.41	1392871.64	3183626.32	40.409960	-104.840581
	9876.00	93.38	268.67	6906.97	3568.95	-1528.36	-3553.92	0.70	1392868.36	3183534.53	40.409953	-104.840911
	9968.00	92.46	268.61	6902.28	3660.82	-1530.54	-3645.77	1.00	1392865.49	3183442.70	40.409947	-104.841241
	10062.00	90.40	267.82	6899.94	3754.76	-1533.47	-3739.69	2.35	1392861.85	3183348.81	40.409939	-104.841578
	10154.00	90.28	267.76	6899.39	3846.72	-1537.01	-3831.62	0.15	1392857.60	3183256.91	40.409929	-104.841908
	10246.00	90.00	267.94	6899.16	3938.69	-1540.46	-3923.56	0.36	1392853.45	3183165.01	40.409920	-104.842238
	10339.00	90.23	267.62	6898.98	4031.65	-1544.07	-4016.49	0.42	1392849.15	3183072.11	40.409910	-104.842572
	10432.00	90.19	268.26	6898.64	4124.62	-1547.41	-4109.43	0.69	1392845.10	3182979.20	40.409901	-104.842906
	10525.00	90.68	267.83	6897.93	4217.59	-1550.58	-4202.37	0.70	1392841.23	3182886.29	40.409892	-104.843239
	10618.00	90.24	268.56	6897.18	4310.56	-1553.51	-4295.32	0.92	1392837.59	3182793.37	40.409884	-104.843573
	10712.00	90.61	267.74	6896.49	4404.53	-1556.55	-4389.27	0.96	1392833.85	3182699.45	40.409875	-104.843910
	10804.00	90.54	268.41	6895.56	4496.50	-1559.64	-4481.21	0.73	1392830.06	3182607.54	40.409867	-104.844241
	10899.00	90.38	267.89	6894.80	4591.47	-1562.70	-4573.16	0.57	1392826.27	3182512.62	40.409858	-104.844582
	10991.00	90.66	268.56	6893.97	4683.45	-1565.55	-4668.11	0.79	1392822.73	3182420.70	40.409851	-104.844912
	11084.00	90.57	267.88	6892.97	4776.42	-1568.44	-4761.06	0.74	1392819.14	3182327.78	40.409843	-104.845245
	11176.00	90.46	268.23	6892.14	4868.39	-1571.56	-4853.00	0.40	1392815.32	3182235.86	40.409834	-104.845576
	11268.00	90.95	268.42	6891.01	4960.37	-1574.25	-4944.95	0.57	1392811.93	3182143.94	40.409826	-104.845906
	11361.00	90.67	267.82	6889.69	5053.33	-1577.30	-5037.89	0.71	1392808.18	3182051.03	40.409818	-104.846240
	11453.00	90.63	270.71	6888.65	5145.32	-1578.48	-5129.87	3.14	1392806.30	3181959.07	40.409815	-104.846570
	11546.00	90.55	270.89	6887.69	5238.29	-1577.18	-5222.86	0.21	1392806.89	3181866.08	40.409818	-104.846904
	11638.00	90.79	271.32	6886.62	5330.24	-1575.41	-5314.83	0.54	1392807.97	3181774.09	40.409823	-104.847234
	11731.00	91.41	271.12	6884.83	5423.18	-1573.43	-5407.79	0.70	1392809.25	3181681.12	40.409828	-104.847568
	11824.00	91.20	271.05	6882.71	5516.12	-1571.67	-5500.75	0.24	1392810.30	3181588.16	40.409833	-104.847902
	11917.00	91.25	271.58	6880.73	5609.04	-1569.54	-5593.71	0.57	1392811.73	3181495.19	40.409839	-104.848235
	12010.00	91.31	270.79	6878.65	5701.98	-1567.61	-5686.66	0.85	1392812.95	3181402.23	40.409844	-104.848569
	12105.00	90.56	270.92	6877.10	5796.93	-1566.20	-5781.64	0.80	1392813.65	3181307.25	40.409848	-104.848910
	12199.00	90.44	271.19	6876.28	5890.89	-1564.47	-5875.62	0.31	1392814.67	3181213.26	40.409853	-104.849248
	12291.00	90.42	271.80	6875.59	5982.83	-1562.07	-5967.58	0.66	1392816.37	3181121.29	40.409859	-104.849578
	12384.00	90.49	271.80	6874.85	6075.75	-1559.14	-6060.54	0.08	1392818.59	3181028.32	40.409867	-104.849912
	12477.00	90.54	270.76	6874.01	6168.69	-1557.07	-6153.51	1.12	1392819.96	3180935.34	40.409873	-104.850246
	12571.00	90.94	270.55	6872.80	6262.66	-1555.99	-6247.49	0.48	1392820.32	3180841.35	40.409876	-104.850583
	12663.00	90.80	270.77	6871.40	6354.63	-1554.93	-6339.48	0.28	1392820.68	3180749.37	40.409879	-104.850913
	12756.00	90.43	270.20	6870.40	6447.61	-1554.15	-6432.47	0.73	1392820.77	3180656.37	40.409881	-104.851247
	12849.00	90.64	271.20	6869.54	6540.58	-1553.01	-6525.45	1.10	1392821.20	3180563.38	40.409884	-104.851581
	12942.00	90.57	270.79	6868.55	6633.54	-1551.40	-6618.44	0.45	1392822.11	3180470.40	40.409888	-104.851915
	13034.00	90.57	270.53	6867.64	6725.52	-1550.34	-6710.42	0.28	1392822.47	3180378.41	40.409891	-104.852246
	13127.00	90.44	270.69	6866.82	6818.49	-1549.35	-6803.42	0.22	1392822.76	3180285.42	40.409894	-104.852579
	13221.00	91.09	270.90	6865.56	6912.46	-1548.04	-6897.40	0.73	1392823.35	3180191.43	40.409897	-104.852917
	13315.00	90.79	270.24	6864.02	7006.42	-1547.11	-6991.38	0.77	1392823.57	3180097.45	40.409900	-104.853254
	13409.00	90.89	271.23	6862.64	7100.39	-1545.90	-7085.36	1.06	1392824.07	3180003.46	40.409903	-104.853592
	13503.00	90.72	269.95	6861.32	7194.36	-1544.93	-7179.34	1.37	1392824.32	3179909.48	40.409905	-104.853929
	13597.00	90.47	270.56	6860.35	7288.34	-1544.51	-7273.34	0.70	1392824.03	3179815.49	40.409907	-104.854267
	13691.00	90.41	269.93	6859.62	7382.33	-1544.11	-7367.33	0.67	1392823.72	3179721.50	40.409908	-104.854604
	13881.00	91.39	270.81	6858.64	7572.28	-1542.89	-7557.30	0.69	1392823.50	3179531.53	40.409911	-104.855287
	13973.00	90.51	270.93	6855.11	7664.23	-1541.49	-7649.28	0.97	1392824.20	3179439.55	40.409915	-104.855617
	14067.00	90.51	271.02	6854.28	7758.20	-1539.89	-7743.26	0.10	1392825.09	3179345.56	40.409919	-104.855954
	14161.00											

Comments	MD (ft)	Incl (°)	Azim True (°)	TVD (ft)	VSEC (ft)	NS (ft)	EW (ft)	DLS (°/100ft)	Northing (ftUS)	Easting (ftUS)	Latitude (°)	Longitude (°)
	17122.00	89.88	270.71	6856.07	10812.80	-1526.93	-10798.14	0.16	1392814.91	3176290.80	40.409951	-104.866924
	17214.00	90.02	270.06	6856.15	10904.78	-1526.31	-10890.14	0.72	1392814.83	3176198.81	40.409953	-104.867255
	17307.00	89.96	270.11	6856.17	10997.78	-1526.17	-10983.14	0.08	1392814.26	3176105.81	40.409953	-104.867588
	17401.00	90.11	270.72	6856.11	11091.76	-1525.49	-11077.13	0.67	1392814.23	3176011.82	40.409955	-104.867926
	17493.00	89.86	269.66	6856.13	11183.75	-1525.19	-11169.13	1.18	1392813.84	3175919.82	40.409956	-104.868256
	17586.00	90.09	269.77	6856.17	11276.75	-1525.65	-11262.13	0.27	1392812.67	3175826.83	40.409954	-104.868590
	17678.00	90.27	270.56	6855.89	11368.74	-1525.38	-11354.13	0.88	1392812.24	3175734.84	40.409955	-104.868921
	17770.00	90.40	270.84	6855.35	11460.72	-1524.26	-11446.12	0.34	1392812.67	3175642.84	40.409958	-104.869251
Last SLB_MWD Survey	17852.00	90.09	269.77	6855.00	11542.71	-1523.82	-11528.12	1.36	1392812.48	3175560.85	40.409959	-104.869545
Projection to Bit	17874.00	90.09	269.77	6854.96	11564.71	-1523.91	-11550.12	0.00	1392812.23	3175538.85	40.409959	-104.869624

Survey Type: Def Survey

Survey Error Model: ISCWSA Rev 0 \*\*\* 3-D 95.000% Confidence 2.7955 sigma  
Survey Program:

Description	Part	MD From (ft)	MD To (ft)	EOU Freq (ft)	Hole Size	Casing Diameter (in)	Survey Tool Type	Borehole / Survey
	1	0.000	20.000	1/98.425	13.500	9.625	NAL_MWD_IFR1-Depth Only	Original Hole / Bost Farm 33N-11A-L IFR 0' to 17874' Definitive
	1	20.000	1820.000	Act Stns	13.500	9.625	NAL_MWD_IFR1	Original Hole / Bost Farm 33N-11A-L IFR 0' to 17874' Definitive
	1	1820.000	17874.000	Act Stns	8.500	5.500	NAL_MWD_IFR1+MS	Original Hole / Bost Farm 33N-11A-L IFR 0' to 17874' Definitive