



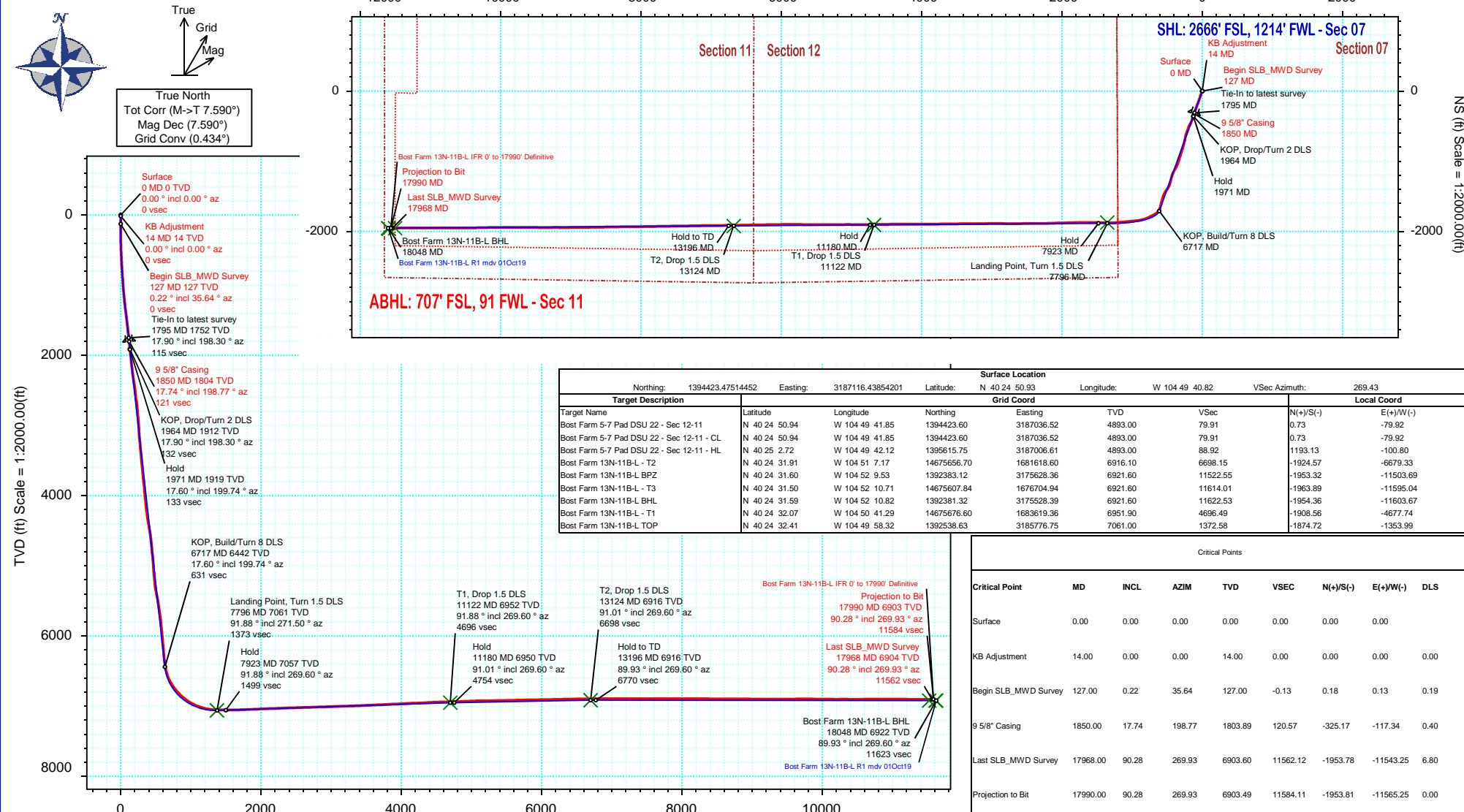
# SRC Energy

## Schlumberger

Borehole:	Well:	Field:	Structure:
Original Hole	Bost Farm 13N-11B-L	CO, Weld County (NAD 83 NZ) - SRC	SRC Energy 07-05N-66W (Bost Farm 5-7 Pad DSU 20)

Gravity & Magnetic Parameters				Surface Location				Miscellaneous			
Model:	Magvar IFR	Dip:	66.59°	Date:	02-Oct-2019	Lat:	N 40 24 50.93	Northing:	1394423.48ftUS	Grid Conv:	0.4342°
MagDec:	7.59°	FS:	52209NT	Gravity FS:	999.024mgN (9.80665 Based)	Lon:	W 104 49 40.82	Easting:	3187116.44ftUS	Scale Fact:	0.9999609
								Slot: Bost Farm 13N-11B-L			
								TVD Ref: KB 20ft(4893ft above MSL)			
								Plan: Bost Farm 13N-11B-L IFR 0' to 17990' Definitive			

Final PvA



## Bost Farm 13N-11B-L IFR 0' to 17990' Definitive Survey Geodetic Report

### (Def Survey)

**Report Date:** December 03, 2019 - 02:32 PM  
**Client:** SRC Energy  
**Field:** CO, Weld County (NAD 83 NZ) - SRC  
**Structure / Slot:** SRC Energy 07-05N-66W (Bost Farm 5-7 Pad DSU 20) / Bost Farm 13N-11B-L  
**Well:** Bost Farm 13N-11B-L  
**Borehole:** Original Hole  
**UWI / API#:** Unknown / 05-123-50254  
**Survey Name:** Bost Farm 13N-11B-L IFR 0' to 17990' Definitive  
**Survey Date:** May 29, 2019  
**Tort / AHD / DDI / ERD Ratio:** 255.223 ° / 12807.887 ft / 6.921 / 1.815  
**Coordinate Reference System:** NAD83 Colorado State Plane, Northern Zone, US Feet  
**Location Lat / Long:** N 40° 24' 50.93280", W 104° 49' 40.82160"  
**Location Grid N/E Y/X:** N 1394423.475 ftUS, E 3187116.439 ftUS  
**CRS Grid Convergence Angle:** 0.4342 °  
**Grid Scale Factor:** 0.9999609  
**Version / Patch:** 2.10.787.0

**Survey / DLS Computation:** Minimum Curvature / Lubinski  
**Vertical Section Azimuth:** 269.430 ° (True North)  
**Vertical Section Origin:** 0.000 ft, 0.000 ft  
**TVD Reference Datum:** KB 20ft  
**TVD Reference Elevation:** 4893.000 ft above MSL  
**Seabed / Ground Elevation:** 4873.000 ft above MSL  
**Magnetic Declination:** 7.590 °  
**Total Gravity Field Strength:** 999.0244mgn (9.80665 Based)  
**Gravity Model:** GARM  
**Total Magnetic Field Strength:** 52209.000 nT  
**Magnetic Dip Angle:** 66.590 °  
**Declination Date:** October 02, 2019  
**Magnetic Declination Model:** Magvar IFR  
**North Reference:** True North  
**Grid Convergence Used:** 0.0000 °  
**Total Corr Mag North-True North:** 7.5900 °  
**Local Coord Referenced To:** Well Head

Comments	MD (ft)	Incl (°)	Azim True (°)	TVD (ft)	VSEC (ft)	NS (ft)	EW (ft)	DLS (°/100ft)	Northing (ftUS)	Easting (ftUS)	Latitude (°)	Longitude (°)
Surface	0.00	0.00	0.00	0.00	0.00	0.00	0.00	N/A	1394423.48	3187116.44	40.414148	-104.828006
KB Adjustment	14.00	0.00	0.00	14.00	0.00	0.00	0.00	0.00	1394423.48	3187116.44	40.414148	-104.828006
Begin												
SLB_MWD	127.00	0.22	35.64	127.00	-0.13	0.18	0.13	0.19	1394423.65	3187116.56	40.414148	-104.828006
Survey												
	215.00	0.93	191.60	215.00	-0.08	-0.39	0.08	1.29	1394423.09	3187116.52	40.414147	-104.828006
	307.00	2.12	195.87	306.96	0.56	-2.75	-0.53	1.30	1394420.72	3187115.93	40.414140	-104.828008
	397.00	3.09	207.60	396.87	2.18	-6.51	-2.11	1.22	1394416.95	3187114.37	40.414130	-104.828014
	487.00	4.46	205.97	486.67	4.89	-11.80	-4.77	1.53	1394411.64	3187111.76	40.414116	-104.828023
	577.00	5.97	207.07	576.30	8.62	-19.12	-8.43	1.68	1394404.30	3187108.15	40.414096	-104.828036
	667.00	7.56	200.94	665.67	12.96	-28.81	-12.68	1.94	1394394.57	3187103.98	40.414069	-104.828052
	757.00	9.28	200.46	754.69	17.74	-41.14	-17.33	1.91	1394382.20	3187099.42	40.414035	-104.828068
	847.00	11.14	198.65	843.27	23.21	-56.18	-22.65	2.10	1394367.13	3187094.22	40.413994	-104.828087
	937.00	12.46	197.64	931.36	29.10	-73.67	-28.37	1.48	1394349.59	3187088.63	40.413946	-104.828108
	1027.00	13.21	197.95	1019.11	35.40	-92.71	-34.48	0.84	1394330.51	3187082.66	40.413894	-104.828130
	1117.00	14.67	198.74	1106.46	42.44	-113.28	-41.31	1.64	1394309.89	3187075.99	40.413837	-104.828154
	1207.00	16.39	199.88	1193.17	50.64	-136.02	-49.29	1.94	1394287.09	3187068.18	40.413775	-104.828183
	1297.00	17.94	200.19	1279.16	59.99	-160.97	-58.40	1.73	1394262.07	3187059.27	40.413706	-104.828216
	1387.00	19.62	200.99	1364.37	70.46	-188.09	-68.59	1.89	1394234.88	3187049.28	40.413632	-104.828252
	1477.00	18.91	200.41	1449.32	81.24	-215.86	-79.09	0.82	1394207.03	3187038.99	40.413555	-104.828290
	1567.00	17.63	199.58	1534.79	91.15	-242.38	-88.75	1.45	1394180.44	3187029.54	40.413483	-104.828325
	1657.00	18.16	199.44	1620.43	100.65	-268.44	-97.98	0.59	1394154.31	3187020.50	40.413411	-104.828358
	1747.00	18.34	198.87	1705.90	110.16	-295.07	-107.23	0.28	1394127.62	3187011.45	40.413338	-104.828391
	1795.00	17.90	198.30	1751.52	115.06	-309.22	-111.99	0.99	1394113.43	3187006.80	40.413299	-104.828408
9 5/8" Casing	1850.00	17.74	198.77	1803.89	120.57	-325.17	-117.34	0.40	1394097.44	3187001.57	40.413255	-104.828427
	1961.00	17.41	199.75	1909.71	131.93	-356.81	-128.39	0.40	1394065.72	3186990.76	40.413169	-104.828467
	2054.00	17.49	200.06	1998.43	141.69	-383.03	-137.88	0.13	1394039.43	3186981.47	40.413097	-104.828501
	2147.00	17.49	199.58	2087.13	151.43	-409.33	-147.36	0.16	1394013.06	3186972.19	40.413024	-104.828535
	2240.00	17.04	199.10	2175.94	160.83	-435.37	-156.50	0.51	1393986.95	3186963.25	40.412953	-104.828568
	2333.00	16.29	206.24	2265.04	171.30	-459.95	-166.73	2.34	1393962.30	3186953.21	40.412885	-104.828605
	2427.00	17.95	209.57	2354.87	184.52	-484.37	-179.71	2.05	1393937.77	3186940.41	40.412818	-104.828651
	2520.00	19.11	204.33	2443.06	198.12	-510.71	-193.05	2.18	1393911.34	3186927.27	40.412746	-104.828699
	2613.00	18.57	195.33	2531.09	208.59	-538.87	-203.24	3.18	1393883.10	3186917.29	40.412669	-104.828736
	2706.00	18.82	203.16	2619.20	218.69	-566.95	-213.06	2.71	1393854.95	3186907.69	40.412592	-104.828771
	2800.00	18.42	201.68	2708.28	230.41	-594.69	-224.51	0.66	1393827.13	3186896.45	40.412516	-104.828812
	2892.00	18.02	194.08	2795.68	239.52	-622.00	-233.34	2.62	1393799.75	3186887.83	40.412441	-104.828844
	2985.00	17.85	192.92	2884.16	246.48	-649.85	-240.03	0.43	1393771.85	3186881.35	40.412364	-104.828868
	3078.00	17.73	192.54	2972.71	253.02	-677.56	-246.29	0.18	1393744.09	3186875.30	40.412288	-104.828890
	3171.00	17.60	192.64	3061.33	259.44	-705.11	-252.44	0.14	1393716.51	3186869.36	40.412213	-104.828913
	3264.00	17.24	192.08	3150.06	265.67	-732.30	-258.40	0.43	1393689.27	3186863.60	40.412138	-104.828934
	3357.00	17.81	197.19	3238.75	273.03	-759.37	-265.49	1.76	1393662.15	3186856.72	40.412064	-104.828959
	3449.00	17.45	196.20	3326.43	281.30	-786.05	-273.50	0.51	1393635.40	3186848.92	40.411990	-104.828988
	3543.00	17.09	197.22	3416.19	289.59	-812.78	-281.52	0.50	1393608.62	3186841.10	40.411917	-104.829017
	3636.00	17.06	197.51	3505.09	298.00	-838.84	-289.67	0.10	1393582.49	3186833.15	40.411845	-104.829046
	3730.00	17.36	198.95	3594.88	306.96	-865.26	-298.37	0.55	1393556.02	3186824.65	40.411773	-104.829077
	3822.00	17.86	192.76	3682.58	314.80	-892.00	-305.94	2.11	1393529.22	3186817.28	40.411700	-104.829105
	3914.00	17.80	202.55	3770.18	323.58	-918.75	-314.45	3.26	1393502.40	3186808.97	40.411626	-104.829135
	4007.00	17.80	199.45	3858.73	334.03	-945.29	-324.64	1.02	1393475.80	3186798.99	40.411553	-104.829172
	4100.00	18.12	192.46	3947.21	342.15	-972.81	-332.49	2.34	1393448.21	3186791.34	40.411478	-104.829200
	4194.00	17.30	198.84	4036.76	350.10	-1000.32	-340.16	2.24	1393420.65	3186783.88	40.411402	-104.829228
	4286.00	17.44	194.81	4124.57	358.30	-1026.59	-348.10	1.32	1393394.31	3186776.14	40.411330	-104.829256
	4380.00	17.58	205.24	4214.24	368.22	-1053.06	-357.76	3.34	1393367.78	3186766.68	40.411257	-104.829291
	4472.00	17.26	207.86	4302.02	380.77	-1077.69	-370.06	0.92	1393343.05	3186754.57	40.411190	-104.829335
	4566.00	17.61	210.01	4391.70	394.64	-1102.34	-383.69	0.78	1393318.31	3186741.13	40.411122	-104.829384
	4658.00	17.91	211.22	4479.32	409.17	-1126.48	-397.98	0.52	1393294.05	3186727.02	40.411056	-104.829435
	4751.00	17.69	204.25	4567.88	422.64	-1151.60	-411.20	2.30	1393268.84	3186713.99	40.410987	-104.829483
	4844.00	17.22	203.09	4656.59	434.09	-1177.15	-422.40	0.63	1393243.21	3186702.99	40.410917	-104.829523
	4936.00	17.53	192.40	4744.42	442.67	-1203.21	-430.72	3.48	1393217.08	3186694.87	40.410845	-104.829553
	5029.00	17.81	201.24	4833.05	451.10	-1230.15	-438.88	2.90	1393190.08	3186686.91	40.410771	-104.829582
	5124.00	17.48	192.18	4923.59	459.65	-1257.65	-447.16	2.91	1393162.53	3186678.84	40.410696	-104.829612
	5217.00	17.50	192.01	5012.28	465.77	-1284.98	-453.01	0.06	1393135.16	3186673.19	40.410621	-104.829633
	5310.00	17.15	197.12	5101.08	472.99	-1311.76	-459.96	1.68	1393108.32	3186666.45	40.410547	-104.829658
	5405.00	15.35	199.05	5192.28	481.47	-1337.03	-468.19	1.98	1393082.99	3186658.41	40.410478	-104.829687
	5500.00	15.71	206.98	5283.82	491.64	-1360.38	-478.13	2.27	1393059.57	3186648.65	40.410414	-104.829723
	5595.00	17.37	214.45	5374.90	505.73	-1383.54	-491.99	2.84	1393036.30	3186634.97	40.410350	-104.829773
	5688.00	18.25	214.73	5463.44	522.11	-1406.96	-508.14	0.95	1393012.77	3186619.00	40.410286	-104.829831
	5781.00	17.09	211.82	5552.05	537.84	-1430.54	-523.64	1.57	1392989.07	3186603.68	40.410221	-104.829886
	5874.00	17.44	206.40	5640.87	551.49	-1454.63	-537.04	1.77	1392964.87	3186590.46	40.410155	-104.829934
	5967.00	17.09	202.10	5729.68	563.07	-1479.78	-548.38	1.42	1392939.64	3186579.31	40.410086	-104.829975
	6059.00	17.10	200.42	5817.62	573.13	-1504.98	-558.19	0.54	1392914.37	3186569.70	40.410017	-104.830010
	6152.00	19.41	196.01	5905.94	582.44	-1532.65	-567.22	2.89	1392886.63	3186560.87	40.409941	-104.830043
	6246.00	17.57	194.66	5995.08	590.62	-1561.39	-575.12	2.01	1392857.83	3186553.19	40.409862	-104.830071
	6342.00	17.80	195.98	6086.54	598.61	-1589.52	-582.83	0.48	1392829.65	3186545.70	40.409785	-104.830099
	6438.00	19.17	194.89	6177.59	606.99	-1618.86	-590.92	1.47	1392800.25	3186537.83	40.409704	-104.830128
	6532.00	18.34	194.62	6266.60	614.98	-1648.09	-598.61	0.89	1392770.97	3186530.35	40.409624	-104.830156
	6625.00	18.26	200.24	6354.90	623.99	-16						

Comments	MD (ft)	Incl (°)	Azim True (°)	TVD (ft)	VSEC (ft)	NS (ftUS)	EW (ft)	DLS (°/100ft)	Northing (ftUS)	Easting (ftUS)	Latitude (°)	Longitude (°)
	6904.00	27.73	236.87	6615.10	687.18	-1750.58	-669.79	7.73	1392667.94	3186459.96	40.409341	-104.830411
	6996.00	35.78	242.85	6693.29	729.35	-1774.60	-711.73	9.39	1392643.61	3186418.21	40.409277	-104.830562
	7090.00	41.65	244.28	6766.60	782.24	-1800.71	-764.37	6.32	1392617.09	3186365.77	40.409205	-104.830751
	7184.00	46.08	251.27	6834.40	842.75	-1825.17	-824.64	6.98	1392592.19	3186305.69	40.409138	-104.830967
	7276.00	52.25	260.70	6894.60	910.34	-1841.72	-892.06	10.24	1392575.12	3186238.40	40.409093	-104.831209
	7370.00	59.52	264.62	6947.30	987.56	-1851.54	-969.19	8.47	1392564.72	3186161.35	40.409066	-104.831486
	7463.00	66.78	264.62	6989.28	1070.18	-1859.32	-1051.74	7.81	1392556.32	3186078.86	40.409044	-104.831783
	7556.00	72.79	264.07	7021.40	1157.07	-1867.92	-1138.54	6.49	1392547.06	3185992.13	40.409021	-104.832094
	7648.00	80.31	266.78	7042.78	1246.26	-1875.02	-1227.67	8.66	1392539.29	3185903.07	40.409001	-104.832414
	7741.00	87.26	270.08	7052.85	1338.63	-1877.53	-1320.02	8.26	1392536.07	3185810.74	40.408994	-104.832746
	7833.00	89.08	271.01	7055.79	1430.56	-1876.66	-1411.96	2.22	1392536.25	3185718.80	40.408997	-104.833076
	7926.00	90.03	270.62	7056.51	1523.53	-1875.33	-1504.95	1.10	1392536.87	3185625.81	40.409000	-104.833410
	8018.00	91.08	271.50	7055.62	1615.48	-1873.63	-1596.92	1.49	1392537.87	3185533.82	40.409005	-104.833740
	8112.00	92.36	268.42	7052.80	1709.42	-1873.70	-1690.87	3.55	1392537.10	3185439.89	40.409005	-104.834078
	8205.00	92.35	269.69	7048.97	1802.34	-1875.23	-1783.77	1.36	1392534.86	3185347.00	40.409001	-104.834411
	8297.00	92.29	268.62	7045.25	1894.26	-1876.58	-1875.69	1.16	1392532.81	3185255.10	40.408997	-104.834741
	8390.00	92.31	268.41	7041.52	1987.18	-1878.99	-1968.58	0.23	1392529.70	3185162.23	40.408990	-104.835075
	8483.00	92.14	268.44	7037.91	2080.09	-1881.55	-2061.48	0.19	1392526.44	3185069.36	40.408983	-104.835408
	8577.00	92.06	268.26	7034.46	2174.01	-1884.25	-2155.37	0.21	1392523.02	3184975.49	40.408976	-104.835746
	8669.00	92.24	268.76	7031.01	2265.94	-1886.64	-2247.28	0.58	1392519.93	3184883.61	40.408969	-104.836076
	8762.00	92.29	269.52	7027.34	2358.86	-1888.04	-2340.19	0.82	1392517.84	3184790.71	40.408965	-104.836409
	8855.00	91.62	270.01	7024.16	2451.80	-1888.42	-2433.14	0.89	1392516.75	3184697.78	40.408964	-104.836743
	8948.00	91.76	269.57	7021.42	2544.76	-1888.76	-2526.10	0.50	1392515.71	3184604.83	40.408963	-104.837077
	9040.00	91.69	270.10	7018.65	2636.72	-1889.02	-2618.05	0.58	1392514.74	3184512.88	40.408962	-104.837407
	9134.00	91.81	269.79	7015.78	2730.67	-1889.11	-2712.01	0.35	1392513.94	3184418.93	40.408962	-104.837744
	9227.00	91.87	270.39	7012.79	2823.62	-1888.97	-2804.96	0.65	1392513.38	3184325.99	40.408963	-104.838078
	9319.00	91.82	270.32	7009.83	2915.56	-1888.40	-2896.91	0.09	1392513.26	3184234.04	40.408964	-104.838408
	9411.00	91.87	269.61	7006.87	3007.50	-1888.45	-2988.86	0.77	1392512.50	3184142.09	40.408964	-104.838739
	9505.00	91.77	269.52	7003.89	3101.46	-1889.17	-3082.81	0.14	1392511.08	3184048.15	40.408962	-104.839076
	9597.00	91.74	269.65	7001.07	3193.41	-1889.83	-3174.77	0.14	1392509.72	3183956.21	40.408960	-104.839406
	9690.00	91.63	269.16	6998.33	3286.37	-1890.80	-3267.72	0.54	1392508.05	3183863.27	40.408957	-104.839740
	9784.00	92.29	269.97	6995.12	3380.32	-1891.51	-3361.66	1.11	1392506.62	3183769.34	40.408955	-104.840077
	9877.00	92.75	269.27	6991.03	3473.22	-1892.13	-3454.57	0.90	1392505.30	3183676.45	40.408954	-104.840411
	9969.00	92.58	269.79	6986.75	3565.12	-1892.88	-3546.47	0.59	1392503.85	3183584.56	40.408952	-104.840741
	10062.00	92.35	268.99	6982.75	3658.04	-1893.87	-3639.38	0.89	1392502.16	3183491.67	40.408949	-104.841074
	10155.00	92.73	269.26	6978.63	3750.94	-1895.29	-3732.27	0.50	1392500.03	3183398.79	40.408945	-104.841408
	10247.00	92.60	269.57	6974.35	3842.84	-1896.23	-3824.17	0.37	1392498.40	3183306.91	40.408942	-104.841738
	10339.00	92.75	270.01	6970.06	3934.74	-1896.57	-3916.07	0.50	1392497.37	3183215.02	40.408941	-104.842068
	10432.00	92.69	270.18	6965.65	4027.63	-1896.41	-4008.96	0.19	1392496.82	3183122.13	40.408942	-104.842402
	10525.00	92.64	269.61	6961.32	4120.53	-1896.58	-4101.86	0.61	1392495.94	3183029.23	40.408941	-104.842735
	10618.00	92.37	269.53	6957.26	4213.44	-1897.28	-4194.77	0.30	1392494.54	3182936.34	40.408939	-104.843069
	10712.00	92.63	269.62	6953.16	4307.35	-1897.98	-4288.68	0.29	1392493.13	3182842.44	40.408937	-104.843406
	10805.00	92.69	269.88	6948.84	4400.25	-1898.38	-4381.58	0.29	1392492.02	3182749.45	40.408936	-104.843740
	10899.00	92.34	269.06	6944.71	4494.15	-1899.25	-4475.48	0.95	1392490.44	3182655.66	40.408934	-104.844077
	10991.00	91.61	269.14	6941.54	4586.10	-1900.69	-4567.42	0.80	1392488.30	3182563.75	40.408930	-104.844407
	11084.00	91.43	269.19	6939.08	4679.06	-1902.05	-4660.37	0.20	1392486.24	3182470.80	40.408926	-104.844741
	11176.00	91.55	270.22	6936.69	4771.03	-1902.52	-4752.34	1.13	1392485.07	3182378.85	40.408925	-104.845071
	11268.00	92.34	269.91	6933.56	4862.97	-1902.42	-4844.29	0.92	1392484.48	3182286.91	40.408925	-104.845401
	11361.00	92.09	269.96	6929.97	4955.90	-1902.52	-4937.22	0.27	1392483.67	3182193.98	40.408924	-104.845735
	11453.00	91.61	270.38	6927.00	5047.84	-1902.25	-5029.17	0.69	1392483.25	3182102.04	40.408925	-104.846065
	11546.00	89.92	269.01	6925.76	5140.83	-1902.75	-5122.15	2.34	1392482.05	3182009.06	40.408924	-104.846399
	11638.00	90.72	269.65	6925.24	5232.82	-1903.82	-5214.14	1.11	1392480.27	3181917.09	40.408921	-104.846729
	11731.00	91.55	270.27	6923.40	5325.80	-1903.89	-5307.12	1.11	1392479.51	3181824.11	40.408920	-104.847063
	11825.00	91.19	270.18	6921.15	5419.76	-1903.52	-5401.10	0.39	1392479.16	3181730.14	40.408921	-104.847401
	11918.00	91.18	269.71	6919.23	5512.74	-1903.61	-5494.08	0.51	1392478.37	3181637.17	40.408921	-104.847734
	12010.00	91.17	270.55	6917.34	5604.71	-1903.40	-5586.05	0.91	1392477.88	3181545.20	40.408922	-104.848065
	12105.00	91.41	270.44	6915.20	5699.67	-1902.58	-5681.03	0.28	1392477.98	3181450.23	40.408924	-104.848406
	12199.00	91.25	270.57	6913.02	5793.63	-1901.75	-5775.00	0.22	1392478.10	3181356.25	40.408926	-104.848743
	12291.00	90.98	269.51	6911.23	5885.61	-1901.69	-5866.98	1.19	1392477.46	3181264.28	40.408926	-104.849073
	12384.00	91.19	269.96	6909.47	5978.59	-1902.12	-5959.96	0.53	1392476.33	3181171.31	40.408925	-104.849407
	12477.00	90.92	269.44	6907.76	6071.57	-1902.60	-6052.94	0.63	1392475.14	3181078.33	40.408924	-104.849741
	12571.00	91.17	269.01	6906.04	6165.56	-1903.87	-6146.92	0.53	1392473.15	3180984.38	40.408920	-104.850079
	12663.00	91.03	268.49	6904.28	6257.53	-1905.88	-6238.88	0.59	1392470.45	3180892.44	40.408914	-104.850409
	12756.00	91.20	269.58	6902.47	6350.51	-1907.45	-6331.85	1.19	1392468.18	3180799.49	40.408910	-104.850743
	12849.00	91.11	268.86	6900.59	6443.49	-1908.71	-6424.82	0.78	1392466.21	3180706.53	40.408906	-104.851077
	12942.00	90.97	268.83	6898.91	6536.47	-1910.59	-6517.79	0.15	1392463.63	3180613.59	40.408901	-104.851410
	13034.00	90.76	268.87	6897.52	6628.45	-1912.43	-6609.76	0.23	1392461.09	3180521.64	40.408896	-104.851741
	13127.00	90.30	269.17	6896.66	6721.45	-1914.02	-6702.74	0.59	1392458.79	3180428.67	40.408892	-104.852075
	13221.00	90.10	269.36	6896.33	6815.45	-1915.23	-6796.73	0.29	1392456.88	3180334.70	40.408888	-104.852412
	13315.00	89.98	269.40	6896.26	6909.45	-1916.25	-6890.72	0.13	1392455.15	3180240.72	40.408885	-104.852750
	13409.00	90.44	270.30	6895.92	7003.44	-1916.49	-6984.72	1.08	1392454.19	3180146.73	40.408885	-104.853087
	13503.00	90.12	268.73	6895.46	7097.44	-1917.29	-7078.71	1.70	1392452.68	3180052.75	40.408882	-104.853425
	13597.00	89.92	268.64	6895.43	7191.43	-1919.44	-7172.69	0.23	1392449.81	3179958.79	40.408876	-104.853762
	13691.00	90.27	268.83	6895.27	7285.42	-1921.52	-7266.67	0.42	1392447.02	3179864.84	40.408871	-104.854100
	13786.00	90.08	269.45	6894.98	7380.42	-1922.95	-7361.66	0.68	1392444.88	3179769.87	40.408867	-104.854441
	13881.00	90.15	269.36	6894.79	7475.42	-1923.93	-7456.65	0.12	1392443.17	3179674.89	40.408864	-104.854782
	13974.00	89.99	268.65	6894.68	7568.42	-1925.55	-7549.64	0.78	1392440.85	3179581.92	40.408859	-104.855116
	14067.00											

Comments	MD (ft)	Incl (°)	Azim True (°)	TVD (ft)	VSEC (ft)	NS (ft)	EW (ft)	DLS (°/100ft)	Northing (ftUS)	Easting (ftUS)	Latitude (°)	Longitude (°)
	17030.00	90.00	269.81	6903.06	10624.17	-1950.84	-10605.28	0.97	1392392.41	3176526.68	40.408787	-104.866088
	17122.00	90.31	270.52	6902.81	10716.16	-1950.57	-10697.28	0.84	1392391.98	3176434.68	40.408788	-104.866418
	17214.00	89.86	270.47	6902.67	10808.14	-1949.78	-10789.28	0.49	1392392.08	3176342.69	40.408790	-104.866749
	17307.00	90.14	269.65	6902.67	10901.14	-1949.68	-10882.28	0.93	1392391.47	3176249.69	40.408790	-104.867083
	17401.00	89.89	270.11	6902.65	10995.13	-1949.88	-10976.28	0.56	1392390.56	3176155.70	40.408789	-104.867420
	17494.00	89.94	270.06	6902.78	11088.13	-1949.74	-11069.28	0.08	1392389.99	3176062.71	40.408789	-104.867754
	17586.00	89.74	269.49	6903.04	11180.12	-1950.10	-11161.28	0.66	1392388.93	3175970.72	40.408788	-104.868084
	17678.00	89.95	269.25	6903.29	11272.12	-1951.11	-11253.27	0.35	1392387.23	3175878.74	40.408785	-104.868415
	17771.00	89.97	270.26	6903.35	11365.12	-1951.51	-11346.27	1.09	1392386.12	3175785.75	40.408784	-104.868749
	17863.00	89.73	269.00	6903.60	11457.12	-1952.10	-11438.26	1.39	1392384.83	3175693.77	40.408782	-104.869079
	17955.00	90.20	269.05	6903.65	11549.12	-1953.67	-11530.25	0.51	1392382.57	3175601.80	40.408778	-104.869409
Last SLB_MWD Survey	17968.00	90.28	269.93	6903.60	11562.12	-1953.78	-11543.25	6.80	1392382.36	3175588.80	40.408778	-104.869456
Projection to Bit	17990.00	90.28	269.93	6903.49	11584.11	-1953.81	-11565.25	0.00	1392382.16	3175566.80	40.408778	-104.869535

Survey Type: Def Survey

Survey Error Model: ISCWSA Rev 0 \*\*\* 3-D 95.000% Confidence 2.7955 sigma

Survey Program:

Description	Part	MD From (ft)	MD To (ft)	EOU Freq (ft)	Hole Size (in)	Casing Diameter (in)	Survey Tool Type	Borehole / Survey
	1	0.000	20.000	1/98.425	13.500	9.625	NAL_MWD_IFR1-Depth Only	Original Hole / Bost Farm 13N-11B-L IFR 0' to 17990' Definitive
	1	20.000	1850.000	Act Stns	13.500	9.625	NAL_MWD_IFR1	Original Hole / Bost Farm 13N-11B-L IFR 0' to 17990' Definitive
	1	1850.000	17990.000	Act Stns	8.500	5.500	NAL_MWD_IFR1+MS	Original Hole / Bost Farm 13N-11B-L IFR 0' to 17990' Definitive