



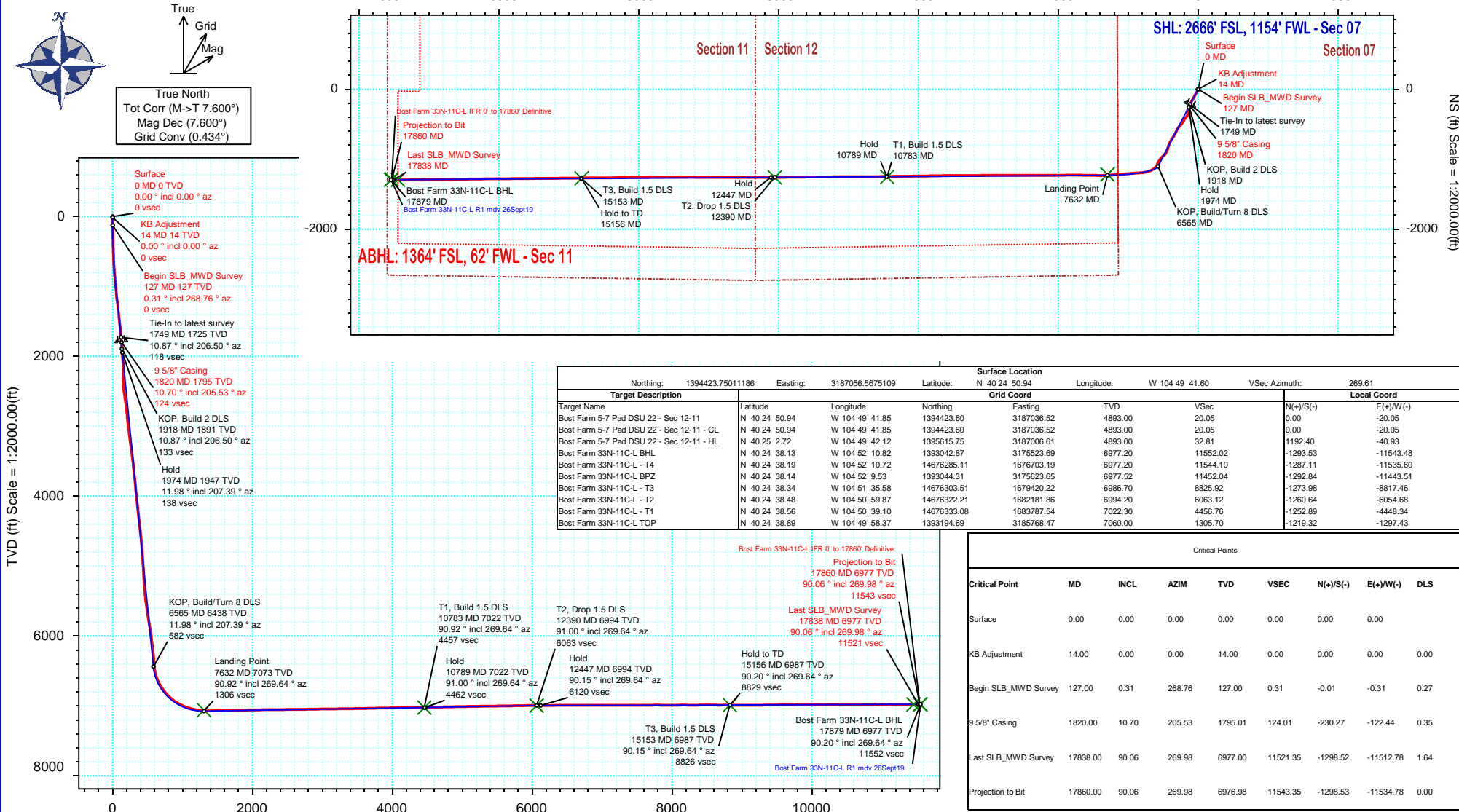
# SRC Energy

## Schlumberger

Borehole:	Well:	Field:	Structure:
Original Hole	Bost Farm 33N-11C-L	CO, Weld County (NAD 83 NZ) - SRC	SRC Energy 07-05N-66W (Bost Farm 5-7 Pad DSU 20)

Gravity & Magnetic Parameters				Surface Location				Miscellaneous			
Model:	Magvar IFR	Dip:	66.59°	Date:	27-Sep-2019	Lat:	N 40 24 50.94	Northing:	1394423.75ftUS	Grid Conv:	0.4341°
MagDec:	7.6°	FS:	52211nT	Gravity FS:	999.026mgn (9.80665 Based)	Lon:	W 104 49 41.60	Easting:	3187056.57ftUS	Scale Fact:	0.9999609
								Slot: Bost Farm 33N-11C-L			
								TVD Ref: KB 20ft(4893ft above MSL)			
								Plan: Bost Farm 33N-11C-L IFR 0' to 17860' Definitive			

Final Pva



## Bost Farm 33N-11C-L IFR 0' to 17860' Definitive Survey Geodetic Report

(Def Survey)

**Report Date:** December 03, 2019 - 01:16 PM  
**Client:** SRC Energy  
**Field:** CO, Weld County (NAD 83 NZ) - SRC  
**Structure / Slot:** SRC Energy 07-05N-66W (Bost Farm 5-7 Pad DSU 20) / Bost Farm  
**Well:** Bost Farm 33N-11C-L  
**Borehole:** Original Hole  
**UWI / API#:** Unknown / 05-123-50252  
**Survey Name:** Bost Farm 33N-11C-L IFR 0' to 17860' Definitive  
**Survey Date:** May 29, 2019  
**Tort / AHD / DDI / ERD Ratio:** 229.402' / 12238.120 ft / 6.851' / 1.731  
**Coordinate Reference System:** NAD83 Colorado State Plane, Northern Zone, US Feet  
**Location Lat / Long:** N 40° 24' 50.94000", W 104° 49' 41.59560"  
**Location Grid N/E Y/X:** N 1394423.750 ftUS, E 3187056.568 ftUS  
**CRS Grid Convergence Angle:** 0.4341 °  
**Grid Scale Factor:** 0.9999609  
**Version / Patch:** 2.10.787.0

**Survey / DLS Computation:** Minimum Curvature / Lubinski  
**Vertical Section Azimuth:** 269.610 ° (True North)  
**Vertical Section Origin:** 0.000 ft, 0.000 ft  
**TVD Reference Datum:** KB 20ft  
**TVD Reference Elevation:** 4893.000 ft above MSL  
**Seabed / Ground Elevation:** 4873.000 ft above MSL  
**Magnetic Declination:** 7.600 °  
**Total Gravity Field Strength:** 999.0260mgn (9.80665 Based)  
**Gravity Model:** GARM  
**Total Magnetic Field Strength:** 52211.000 nT  
**Magnetic Dip Angle:** 66.590 °  
**Declination Date:** September 27, 2019  
**Magnetic Declination Model:** Magvar IFR  
**North Reference:** True North  
**Grid Convergence Used:** 0.0000 °  
**Total Corr Mag North-True North:** 7.6000 °  
**Local Coord Referenced To:** Well Head

Comments	MD (ft)	Incl (°)	Azim True (°)	TVD (ft)	VSEC (ft)	NS (ft)	EW (ft)	DLS (°/100ft)	Northing (ftUS)	Easting (ftUS)	Latitude (°)	Longitude (°)
Surface	0.00	0.00	0.00	0.00	0.00	0.00	0.00	N/A	1394423.75	3187056.57	40.414150	-104.828221
KB Adjustment	14.00	0.00	0.00	14.00	0.00	0.00	0.00	0.00	1394423.75	3187056.57	40.414150	-104.828221
Begin												
SLB_MWD	127.00	0.31	268.76	127.00	0.31	-0.01	-0.31	0.27	1394423.74	3187056.26	40.414150	-104.828222
Survey												
	215.00	1.15	247.70	214.99	1.36	-0.35	-1.36	0.99	1394423.39	3187055.21	40.414149	-104.828226
	307.00	2.21	220.73	306.95	3.39	-2.04	-3.37	1.41	1394421.68	3187053.21	40.414144	-104.828233
	397.00	3.00	210.86	396.86	5.75	-5.38	-5.71	1.01	1394418.33	3187050.90	40.414135	-104.828242
	487.00	4.24	204.34	486.68	8.36	-10.43	-8.29	1.45	1394413.26	3187048.35	40.414121	-104.828251
	577.00	5.39	205.35	576.36	11.59	-17.28	-11.47	1.28	1394406.38	3187045.23	40.414103	-104.828262
	667.00	6.81	204.60	665.85	15.68	-25.96	-15.50	1.58	1394397.68	3187041.26	40.414079	-104.828277
	757.00	8.40	208.96	755.05	21.16	-36.56	-20.91	1.88	1394387.03	3187035.94	40.414050	-104.828296
	847.00	9.72	209.49	843.93	28.16	-48.92	-27.83	1.47	1394374.62	3187029.11	40.414016	-104.828321
	937.00	11.00	207.99	932.46	36.03	-63.12	-35.60	1.45	1394360.36	3187021.45	40.413977	-104.828349
	1027.00	12.02	207.24	1020.65	44.46	-79.04	-43.92	1.15	1394344.39	3187013.25	40.413933	-104.828379
	1117.00	13.04	207.38	1108.50	53.54	-96.38	-52.88	1.13	1394326.97	3187004.42	40.413885	-104.828411
	1207.00	13.74	208.57	1196.06	63.44	-114.79	-62.66	0.84	1394308.50	3186994.78	40.413835	-104.828446
	1297.00	13.43	208.52	1283.54	73.67	-133.36	-72.76	0.34	1394289.85	3186984.82	40.413784	-104.828482
	1387.00	13.04	209.10	1371.15	83.72	-151.41	-82.69	0.46	1394271.72	3186975.03	40.413734	-104.828518
	1477.00	12.51	207.07	1458.92	93.21	-168.96	-92.07	0.77	1394254.10	3186965.79	40.413686	-104.828552
	1567.00	11.84	206.72	1546.90	101.92	-185.89	-100.65	0.75	1394237.11	3186957.33	40.413640	-104.828582
	1657.00	11.53	205.92	1635.03	110.11	-202.23	-108.74	0.39	1394220.71	3186949.37	40.413595	-104.828611
	1747.00	10.96	206.23	1723.30	117.93	-217.99	-116.45	0.64	1394204.89	3186941.78	40.413552	-104.828639
	1749.00	10.87	206.50	1725.27	118.10	-218.33	-116.62	5.18	1394204.55	3186941.61	40.413551	-104.828640
9 5/8" Casing	1820.00	10.70	205.53	1795.01	124.01	-230.27	-122.44	0.35	1394192.57	3186935.88	40.413518	-104.828661
	1868.00	10.58	204.85	1842.19	127.83	-238.29	-126.22	0.35	1394184.52	3186932.17	40.413496	-104.828674
	1961.00	11.23	203.50	1933.51	135.14	-254.34	-133.41	0.75	1394168.42	3186925.09	40.413452	-104.828700
	2055.00	13.55	202.81	2025.31	143.19	-272.89	-141.33	2.47	1394149.81	3186917.31	40.413401	-104.828729
	2147.00	12.95	199.53	2114.86	150.95	-292.54	-148.96	1.05	1394130.11	3186909.83	40.413347	-104.828756
	2240.00	13.15	173.00	2205.54	153.28	-312.88	-151.16	6.39	1394109.75	3186907.79	40.413291	-104.828764
	2334.00	13.49	172.09	2297.01	150.62	-334.35	-148.34	0.42	1394088.30	3186910.77	40.413232	-104.828754
	2428.00	13.38	189.92	2388.48	151.13	-355.93	-148.71	4.39	1394066.72	3186910.57	40.413173	-104.828755
	2520.00	12.76	210.48	2478.15	158.25	-375.18	-155.70	5.07	1394047.41	3186903.72	40.413120	-104.828780
	2614.00	12.97	222.32	2569.80	170.73	-391.93	-168.07	2.81	1394030.57	3186891.48	40.413074	-104.828825
	2708.00	13.37	219.00	2661.33	184.79	-408.18	-182.01	0.91	1394014.22	3186877.66	40.413030	-104.828875
	2800.00	12.49	213.31	2751.00	197.06	-424.76	-194.17	1.68	1393997.55	3186865.63	40.412984	-104.828918
	2893.00	11.91	206.66	2841.91	207.00	-441.74	-204.00	1.63	1393980.49	3186855.93	40.412937	-104.828954
	2985.00	11.86	209.23	2931.93	215.99	-458.48	-212.88	0.58	1393963.69	3186847.18	40.412892	-104.828985
	3078.00	11.67	211.81	3022.98	225.73	-474.81	-222.50	0.60	1393947.29	3186837.68	40.412847	-104.829020
	3171.00	11.36	218.53	3114.11	236.49	-489.97	-233.16	1.48	1393932.05	3186827.13	40.412805	-104.829058
	3265.00	11.73	221.59	3206.21	248.70	-504.36	-245.27	0.76	1393917.57	3186815.13	40.412766	-104.829102
	3357.00	11.47	222.09	3296.33	261.13	-518.14	-257.61	0.30	1393903.70	3186802.90	40.412728	-104.829146
	3451.00	11.82	222.52	3388.40	274.00	-532.17	-270.38	0.38	1393889.57	3186790.23	40.412689	-104.829192
	3544.00	11.16	219.00	3479.53	286.20	-546.18	-282.49	1.04	1393875.46	3186778.24	40.412651	-104.829235
	3636.00	11.51	210.99	3569.75	296.63	-560.97	-292.82	1.75	1393860.60	3186768.02	40.412610	-104.829273
	3730.00	12.22	206.42	3661.74	306.00	-577.92	-302.07	1.25	1393843.58	3186758.90	40.412564	-104.829306
	3822.00	12.45	206.82	3751.62	314.92	-595.49	-310.88	0.27	1393825.94	3186750.22	40.412515	-104.829337
	3916.00	12.15	205.84	3843.46	323.93	-613.44	-319.76	0.39	1393807.93	3186741.48	40.412466	-104.829369
	4008.00	12.13	206.38	3933.40	332.56	-630.81	-328.28	0.13	1393790.50	3186733.09	40.412418	-104.829400
	4101.00	11.95	209.85	4024.36	341.81	-647.92	-337.41	0.80	1393773.32	3186724.09	40.412372	-104.829433
	4194.00	11.44	208.89	4115.42	351.17	-664.34	-346.66	0.59	1393756.83	3186714.97	40.412326	-104.829466
	4287.00	11.87	212.13	4206.51	360.82	-680.52	-356.20	0.84	1393740.58	3186705.55	40.412282	-104.829500
	4380.00	11.70	215.61	4297.55	371.51	-696.28	-366.78	0.79	1393724.74	3186695.09	40.412239	-104.829538
	4474.00	12.01	215.05	4389.54	382.78	-712.04	-377.94	0.35	1393708.90	3186684.04	40.412196	-104.829578
	4566.00	12.18	209.01	4479.51	393.10	-728.36	-388.15	1.39	1393692.50	3186673.96	40.412151	-104.829615
	4659.00	11.42	206.65	4570.54	402.10	-745.17	-397.04	0.97	1393675.62	3186665.20	40.412105	-104.829647
	4752.00	11.80	205.26	4661.64	410.40	-762.00	-405.22	0.51	1393658.73	3186657.14	40.412058	-104.829676
	4844.00	11.53	204.72	4751.74	418.37	-778.86	-413.08	0.32	1393641.81	3186649.41	40.412012	-104.829704
	4937.00	12.03	200.62	4842.78	425.79	-796.37	-420.38	1.05	1393624.25	3186642.45	40.411964	-104.829731
	5030.00	11.96	195.16	4933.75	431.85	-814.75	-426.32	1.22	1393605.83	3186636.45	40.411914	-104.829752
	5125.00	11.17	197.45	5026.82	437.31	-833.03	-431.65	0.96	1393587.51	3186631.26	40.411863	-104.829771
	5218.00	11.09	195.52	5118.07	442.52	-850.24	-436.74	0.41	1393570.26	3186626.29	40.411816	-104.829789
	5312.00	11.69	197.61	5210.22	447.94	-868.03	-442.04	0.77	1393552.44	3186621.13	40.411767	-104.829808
	5407.00	11.38	201.89	5303.31	454.47	-885.90	-448.45	0.96	1393534.52	3186614.86	40.411718	-104.829831
	5502.00	11.57	209.04	5396.41	462.71	-902.92	-456.57	1.51	1393517.43	3186606.07	40.411672	-104.829861
	5595.00	11.60	215.78	5487.52	472.81	-918.66	-466.56	1.45	1393501.62	3186597.00	40.411628	-104.829896
	5689.00	12.22	223.14	5579.50	485.24	-933.59	-478.89	1.74	1393486.60	3186584.78	40.411587	-104.829941
	5781.00	11.93	224.61	5669.47	498.67	-947.46	-492.23	0.46	1393472.62	3186571.55	40.411549	-104.829989
	5875.00	11.87	226.90	5761.45	512.64	-960.99	-506.11	0.51	1393459.00	3186557.77	40.411512	-104.830038
	5967.00	12.14	226.28	5851.44	526.63	-974.14	-520.01	0.33	1393445.74	3186543.97	40.411476	-104.830088
	6059.00	12.05	222.40	5941.39	540.19	-987.92	-533.48	0.89	1393431.86	3186530.61	40.411438	-104.830137
	6153.00	11.87	218.62	6033.36	552.94	-1002.71	-546.13	0.85	1393416.97	3186518.07	40.411398	-104.830182
	6247.00	11.88	216.36	6125.34	564.82	-1018.06	-557.90	0.49	1393401.54	3186506.42	40.411356	-104.830224
	6343.00	11.86	212.08	6219.29	576.02	-1034.38	-569.00	0.92	1393385.14	3186495.45	40.411311	-104.830264
	6440.00	11.87	199.09	6314.24	584.70	-1052.25	-577.56	2.75	1393367.20	3186487.02	40.411262	-104.830295
	6533.00	12.22	196.20									

Comments	MD (ft)	Incl (°)	Azim True (°)	TVD (ft)	VSEC (ft)	NS (ft)	EW (ft)	DLS (°/100ft)	Northing (ftUS)	Easting (ftUS)	Latitude (°)	Longitude (°)
	6812.00	30.67	237.33	6663.41	656.82	-1146.62	-649.03	8.44	1393272.29	3186416.26	40.411003	-104.830552
	6905.00	36.01	248.24	6741.15	702.41	-1169.60	-694.47	8.61	1393248.97	3186371.01	40.410940	-104.830715
	6997.00	39.89	258.94	6813.76	756.67	-1185.31	-748.62	8.29	1393232.86	3186316.98	40.410896	-104.830909
	7092.00	47.13	265.77	6882.65	821.46	-1193.73	-813.35	9.08	1393223.94	3186252.31	40.410873	-104.831142
	7185.00	57.42	266.19	6939.48	894.77	-1198.87	-886.63	11.07	1393218.25	3186179.08	40.410859	-104.831405
	7278.00	63.54	265.44	6985.28	975.48	-1204.78	-967.30	6.62	1393211.72	3186098.46	40.410843	-104.831695
	7372.00	70.99	265.66	7021.59	1061.90	-1211.50	-1053.68	7.93	1393204.35	3186012.14	40.410824	-104.832005
	7464.00	79.17	265.73	7045.25	1150.52	-1218.17	-1142.25	8.89	1393197.01	3185923.62	40.410806	-104.832323
	7556.00	82.18	265.69	7060.16	1241.08	-1224.96	-1232.77	3.27	1393189.54	3185833.16	40.410788	-104.832648
	7649.00	87.67	266.70	7068.38	1333.51	-1231.10	-1325.16	6.00	1393182.70	3185740.82	40.410771	-104.832980
	7741.00	91.68	271.03	7068.91	1425.46	-1232.92	-1417.10	6.41	1393180.18	3185648.90	40.410766	-104.833310
	7833.00	91.67	270.85	7066.22	1517.40	-1231.41	-1509.05	0.20	1393180.99	3185556.95	40.410770	-104.833640
	7926.00	91.39	271.23	7063.73	1610.34	-1229.73	-1602.00	0.51	1393181.98	3185463.99	40.410774	-104.833974
	8019.00	91.26	269.91	7061.58	1703.30	-1228.80	-1694.97	1.43	1393182.20	3185371.02	40.410777	-104.834308
	8112.00	90.96	270.14	7059.78	1796.28	-1228.76	-1787.96	0.41	1393181.53	3185278.05	40.410777	-104.834641
	8205.00	90.83	269.71	7058.33	1889.26	-1228.88	-1880.94	0.48	1393180.71	3185185.06	40.410777	-104.834975
	8297.00	91.00	270.11	7056.86	1981.25	-1229.03	-1972.93	0.47	1393179.86	3185093.08	40.410776	-104.835306
	8390.00	91.04	269.46	7055.20	2074.24	-1229.37	-2065.92	0.70	1393178.81	3185000.11	40.410775	-104.835640
	8484.00	90.47	269.87	7053.96	2168.23	-1229.92	-2159.91	0.75	1393177.55	3184906.13	40.410774	-104.835977
	8577.00	90.38	269.79	7053.28	2261.22	-1230.20	-2252.90	0.13	1393176.57	3184813.14	40.410773	-104.836311
	8669.00	90.53	270.24	7052.54	2353.22	-1230.18	-2344.90	0.52	1393175.90	3184721.15	40.410773	-104.836641
	8764.00	90.77	269.59	7051.47	2448.21	-1230.32	-2439.89	0.73	1393175.04	3184626.17	40.410773	-104.836983
	8856.00	90.29	270.63	7050.62	2540.20	-1230.14	-2531.89	1.24	1393174.52	3184534.18	40.410773	-104.837313
	8948.00	90.38	269.97	7050.08	2632.19	-1229.66	-2623.88	0.72	1393174.30	3184442.18	40.410774	-104.837643
	9041.00	91.21	269.74	7048.79	2725.18	-1229.89	-2716.87	0.93	1393173.36	3184349.20	40.410774	-104.837977
	9134.00	90.75	269.53	7047.20	2818.17	-1230.49	-2809.86	0.54	1393172.06	3184256.23	40.410772	-104.838311
	9227.00	91.18	269.73	7045.63	2911.15	-1231.09	-2902.84	0.51	1393170.76	3184163.25	40.410770	-104.838645
	9320.00	90.75	269.78	7044.06	3004.14	-1231.48	-2995.83	0.47	1393169.66	3184070.28	40.410769	-104.838979
	9412.00	90.69	269.43	7042.91	3096.13	-1232.12	-3087.82	0.39	1393168.33	3183978.30	40.410767	-104.839309
	9505.00	91.03	270.07	7041.51	3189.12	-1232.52	-3180.81	0.78	1393167.22	3183885.32	40.410766	-104.839643
	9598.00	90.92	270.07	7039.93	3282.11	-1232.41	-3273.79	0.12	1393166.63	3183792.34	40.410767	-104.839977
	9691.00	90.86	269.95	7038.73	3375.10	-1232.39	-3366.78	0.41	1393165.94	3183699.35	40.410767	-104.840311
	9785.00	91.01	269.20	7037.44	3469.09	-1233.09	-3460.77	0.93	1393164.53	3183605.38	40.410765	-104.840648
	9877.00	91.21	269.32	7035.66	3561.07	-1234.28	-3552.75	0.25	1393162.64	3183513.42	40.410761	-104.840979
	9970.00	91.16	269.37	7033.74	3654.05	-1235.34	-3645.72	0.08	1393160.88	3183420.46	40.410758	-104.841313
	10063.00	91.02	268.98	7031.97	3747.03	-1236.68	-3738.69	0.45	1393158.83	3183327.50	40.410755	-104.841646
	10155.00	91.12	268.97	7030.25	3839.00	-1238.33	-3830.66	0.11	1393156.49	3183235.55	40.410750	-104.841977
	10247.00	91.19	269.16	7028.39	3930.98	-1239.83	-3922.63	0.22	1393154.29	3183143.60	40.410746	-104.842307
	10340.00	91.05	269.35	7026.58	4023.96	-1241.04	-4015.61	0.25	1393152.38	3183050.64	40.410743	-104.842641
	10433.00	91.23	268.80	7024.73	4116.94	-1242.54	-4108.58	0.62	1393150.17	3182957.69	40.410738	-104.842975
	10526.00	90.88	269.45	7023.01	4209.92	-1243.96	-4201.55	0.79	1393148.05	3182864.74	40.410734	-104.843309
	10619.00	91.11	269.54	7021.40	4302.90	-1244.78	-4294.53	0.27	1393146.53	3182771.77	40.410732	-104.843642
	10713.00	90.85	269.03	7019.79	4396.89	-1245.95	-4388.51	0.61	1393144.64	3182677.80	40.410729	-104.843980
	10806.00	90.92	269.03	7018.35	4489.87	-1247.52	-4481.49	0.08	1393142.36	3182584.85	40.410725	-104.844314
	10899.00	91.09	269.07	7016.72	4582.85	-1249.07	-4574.46	0.19	1393140.12	3182491.89	40.410720	-104.844648
	10992.00	90.96	269.52	7015.06	4675.84	-1250.21	-4667.44	0.50	1393138.27	3182398.93	40.410717	-104.844982
	11084.00	91.13	269.83	7013.38	4767.82	-1250.73	-4759.42	0.38	1393137.05	3182306.96	40.410716	-104.845312
	11177.00	91.10	269.95	7011.57	4860.80	-1250.91	-4852.40	0.13	1393136.17	3182213.98	40.410715	-104.845646
	11269.00	90.90	270.07	7009.97	4952.79	-1250.89	-4944.39	0.25	1393135.49	3182122.00	40.410715	-104.845976
	11362.00	90.96	269.82	7008.46	5045.77	-1250.98	-5037.37	0.28	1393134.69	3182029.02	40.410715	-104.846310
	11454.00	91.08	269.61	7006.82	5137.76	-1251.44	-5129.36	0.26	1393133.54	3181937.05	40.410713	-104.846640
	11546.00	91.10	269.36	7005.07	5229.74	-1252.27	-5221.34	0.27	1393132.02	3181845.08	40.410711	-104.846971
	11639.00	90.72	269.55	7003.59	5322.73	-1253.15	-5314.32	0.46	1393130.43	3181752.11	40.410709	-104.847304
	11731.00	90.99	269.64	7002.22	5414.72	-1253.80	-5406.31	0.31	1393129.08	3181660.13	40.410707	-104.847635
	11825.00	90.81	269.37	7000.74	5508.71	-1254.61	-5500.29	0.35	1393127.56	3181566.16	40.410705	-104.847972
	11918.00	90.60	269.49	6999.60	5601.70	-1255.54	-5593.28	0.26	1393125.93	3181473.19	40.410702	-104.848306
	12011.00	91.00	269.19	6998.30	5694.69	-1256.61	-5686.27	0.54	1393124.15	3181380.22	40.410699	-104.848640
	12106.00	91.08	269.25	6996.58	5789.67	-1257.90	-5781.24	0.11	1393122.14	3181285.26	40.410695	-104.848981
	12200.00	90.71	269.55	6995.11	5883.66	-1258.89	-5875.23	0.51	1393120.44	3181191.29	40.410693	-104.849319
	12292.00	90.81	269.80	6993.89	5975.65	-1259.41	-5967.22	0.29	1393119.22	3181099.31	40.410691	-104.849649
	12384.00	89.95	270.08	6993.28	6067.65	-1259.51	-6059.21	0.98	1393118.43	3181007.32	40.410691	-104.849979
	12478.00	90.60	270.26	6992.83	6161.64	-1259.23	-6153.21	0.72	1393118.00	3180913.32	40.410691	-104.850317
	12571.00	90.66	269.45	6991.80	6254.63	-1259.46	-6246.20	0.87	1393117.06	3180820.34	40.410691	-104.850651
	12664.00	90.52	269.50	6990.85	6347.63	-1260.31	-6339.20	0.16	1393115.50	3180727.36	40.410688	-104.850985
	12757.00	90.14	270.53	6990.31	6440.62	-1260.29	-6432.19	1.18	1393114.82	3180634.37	40.410688	-104.851319
	12850.00	90.55	269.84	6989.75	6533.62	-1259.99	-6525.19	0.86	1393114.42	3180541.38	40.410689	-104.851653
	12943.00	90.24	270.12	6989.11	6626.61	-1260.02	-6618.19	0.45	1393113.68	3180448.39	40.410689	-104.851987
	13035.00	89.88	270.32	6988.01	6718.61	-1259.67	-6710.19	0.45	1393113.34	3180356.39	40.410690	-104.852317
	13127.00	89.99	270.00	6988.12	6810.60	-1259.41	-6802.19	0.37	1393112.90	3180264.40	40.410690	-104.852647
	13221.00	90.20	269.96	6988.96	6904.60	-1259.45	-6896.19	0.23	1393112.15	3180170.40	40.410690	-104.852985
	13315.00	90.09	270.34	6988.72	6998.59	-1259.20	-6990.18	0.42	1393111.69	3180076.41	40.410691	-104.853322
	13410.00	89.93	269.34	6988.71	7093.59	-1259.46	-7085.18	1.07	1393110.70	3179981.42	40.410690	-104.853664
	13505.00	90.24	270.96	6988.57	7188.58	-1259.22	-7180.18	1.74	1393110.23	3179886.43	40.410691	-104.854005
	13599.00	89.99	270.81	6988.38	7282.56	-1257.76	-7274.17	0.31	1393110.97	3179792.44	40.410695	-104.854342
	13692.00	90.27	270.83	6988.17	7375.54	-1256.43	-7367.16	0.30	1393111.60	3179699.44	40.410698	-104.854676
	13787.00	89.92	270.02	6988.01	7470.53	-1255.73	-7462.15	0.93	1393111.58	3179604.45	40.410700	-104.855017
	13881.00	90.05	269.90	6988.03	7564.53	-1255.79	-7556.15	0.19	1393110.80	3179510.45	40.410700	-104.855355
	13975.00											

Comments	MD (ft)	Incl (°)	Azim True (°)	TVD (ft)	VSEC (ft)	NS (ft)	EW (ft)	DLS (°/100ft)	Northing (ftUS)	Easting (ftUS)	Latitude (°)	Longitude (°)
	16937.00	89.93	269.33	6977.52	10620.38	-1287.97	-10611.86	0.36	1393055.48	3176455.21	40.410608	-104.866328
	17030.00	89.78	269.26	6977.76	10713.38	-1289.11	-10704.85	0.18	1393053.63	3176362.23	40.410605	-104.866662
	17122.00	90.29	269.83	6977.70	10805.38	-1289.84	-10796.85	0.83	1393052.21	3176270.24	40.410603	-104.866992
	17215.00	89.59	269.83	6977.80	10898.38	-1290.12	-10889.85	0.75	1393051.23	3176177.25	40.410602	-104.867326
	17308.00	90.15	269.69	6978.01	10991.38	-1290.51	-10982.85	0.62	1393050.13	3176084.26	40.410601	-104.867660
	17401.00	90.07	268.82	6977.83	11084.37	-1291.72	-11075.84	0.94	1393048.22	3175991.29	40.410598	-104.867994
	17494.00	90.20	268.81	6977.61	11177.36	-1293.64	-11168.82	0.14	1393045.59	3175898.33	40.410592	-104.868328
	17587.00	90.01	269.24	6977.44	11270.36	-1295.22	-11261.80	0.51	1393043.30	3175805.36	40.410588	-104.868662
	17679.00	90.16	269.30	6977.30	11362.36	-1296.40	-11353.79	0.18	1393041.44	3175713.39	40.410584	-104.868992
	17771.00	90.10	268.88	6977.10	11454.35	-1297.86	-11445.78	0.46	1393039.28	3175621.42	40.410580	-104.869322
Last SLB_MWD Survey	17838.00	90.06	269.98	6977.00	11521.35	-1298.52	-11512.78	1.64	1393038.10	3175554.43	40.410578	-104.869563
Projection to Bit	17860.00	90.06	269.98	6976.98	11543.35	-1298.53	-11534.78	0.00	1393037.93	3175532.43	40.410578	-104.869642

Survey Type: Def Survey

Survey Error Model: ISCWSA Rev 0 \*\*\* 3-D 95.000% Confidence 2.7955 sigma  
Survey Program:

Description	Part	MD From (ft)	MD To (ft)	EOU Freq (ft)	Hole Size	Casing Diameter (in)	Survey Tool Type	Borehole / Survey
	1	0.000	20.000	1/98.425	13.500	9.625	NAL_MWD_IFR1-Depth Only	Original Hole / Bost Farm 33N-11C-L IFR 0' to 17860' Definitive
	1	20.000	1820.000	Act Stns	13.500	9.625	NAL_MWD_IFR1	Original Hole / Bost Farm 33N-11C-L IFR 0' to 17860' Definitive
	1	1820.000	17860.000	Act Stns	8.500	5.500	NAL_MWD_IFR1+MS	Original Hole / Bost Farm 33N-11C-L IFR 0' to 17860' Definitive