



SRC Energy

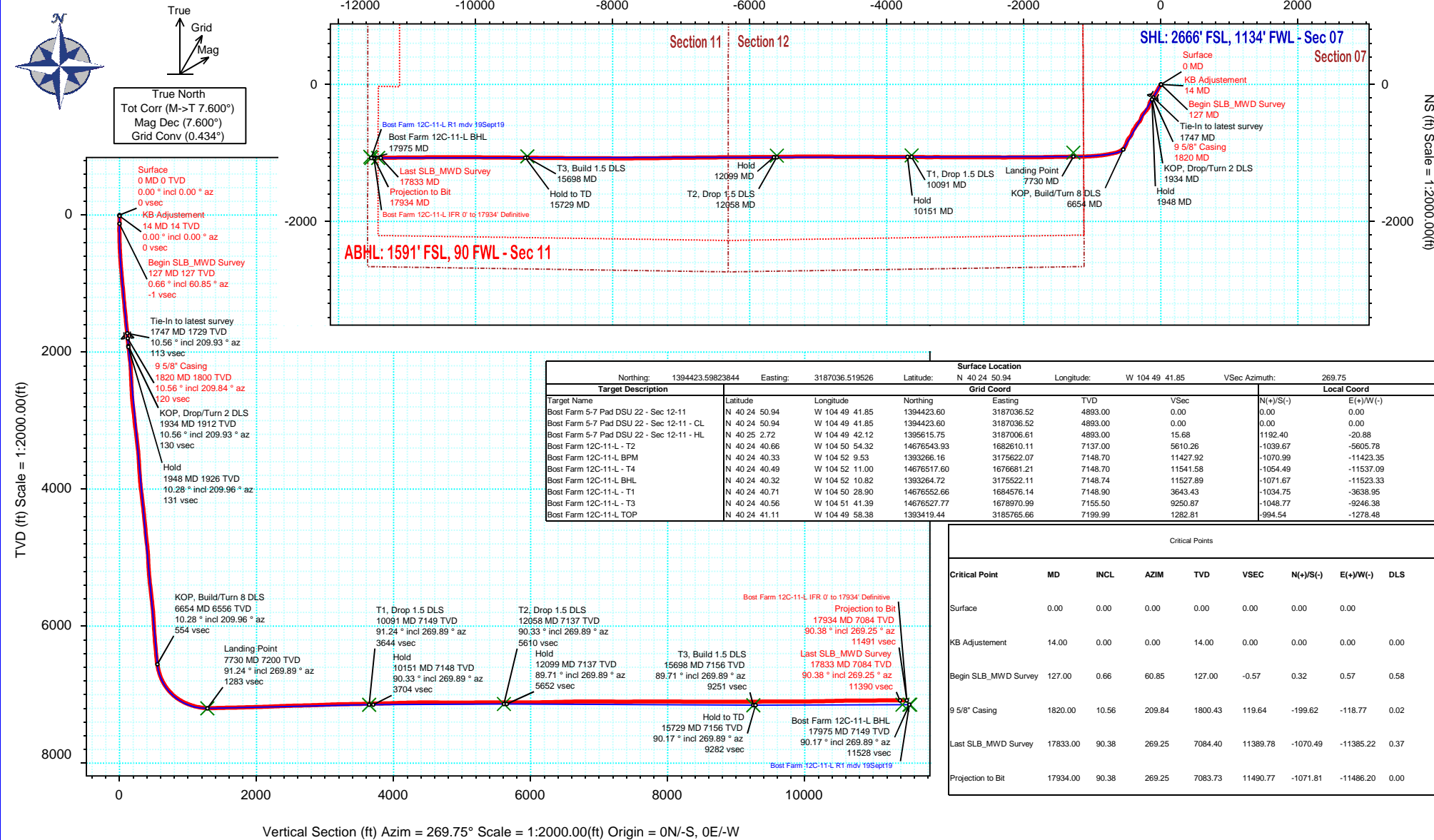
Rev 1

Schlumberger

Borehole:	Well:	Field:	Structure:
Original Hole	Bost Farm 12C-11-L	CO, Weld County (NAD 83 NZ) - SRC	SRC Energy 07-05N-66W (Bost Farm 5-7 Pad DSU 20)

Gravity & Magnetic Parameters				Surface Location				Miscellaneous			
Model:	Magvar IFR	Dip:	66.6°	Date:	20-Sep-2019	Lat:	N 40 24 50.94	Northing:	1394423.6ftUS	Grid Conv:	0.434°
MagDec:	7.6°	FS:	52213nT	Gravity FS:	999.026mgn (9.80665 Based)	Lon:	W 104 49 41.85	Easting:	3187036.52ftUS	Scale Fact:	0.9999609
								Slot: Bost Farm 12C-11-L			
								TVD Ref: KB 20ft(4893ft above MSL)			
								Plan: Bost Farm 12C-11-L IFR 0' to 17934' Definitive			

Final PvA



Bost Farm 12C-11-L IFR 0' to 17934' Definitive Survey Geodetic Report

(Def Survey)

Report Date: December 03, 2019 - 01:03 PM
Client: SRC Energy
Field: CO, Weld County (NAD 83 NZ) - SRC
Structure / Slot: SRC Energy 07-05N-66W (Bost Farm 5-7 Pad DSU 20) / Bost Farm 12C-11-L
Well: Bost Farm 12C-11-L
Borehole: Original Hole
UWI / API#: Unknown / 05-123-50261
Survey Name: Bost Farm 12C-11-L IFR 0' to 17934' Definitive
Survey Date: May 29, 2019
Tort / AHD / DDI / ERD Ratio: 220.126 ° / 12058.654 ft / 6.821 / 1.676
Coordinate Reference System: NAD83 Colorado State Plane, Northern Zone, US Feet
Location Lat / Long: N 40° 24' 50.94000", W 104° 49' 41.85480"
Location Grid N/E Y/X: N 1394423.598 ftUS, E 3187036.520 ftUS
CRS Grid Convergence Angle: 0.4340 °
Grid Scale Factor: 0.9999609
Version / Patch: 2.10.787.0

Survey / DLS Computation: Minimum Curvature / Lubinski
Vertical Section Azimuth: 269.750 ° (True North)
Vertical Section Origin: 0.000 ft, 0.000 ft
TVD Reference Datum: KB 20ft
TVD Reference Elevation: 4893.000 ft above MSL
Seabed / Ground Elevation: 4873.000 ft above MSL
Magnetic Declination: 7.600 °
Total Gravity Field Strength: 999.0260mgn (9.80665 Based)
Gravity Model: GARM
Total Magnetic Field Strength: 52213.000 nT
Magnetic Dip Angle: 66.600 °
Declination Date: September 20, 2019
Magnetic Declination Model: Magvar IFR
North Reference: True North
Grid Convergence Used: 0.0000 °
Total Corr Mag North-True North: 7.6000 °
Local Coord Referenced To: Well Head

Comments	MD (ft)	Incl (°)	Azim True (°)	TVD (ft)	VSEC (ft)	NS (ft)	EW (ft)	DLS (°/100ft)	Northing (ftUS)	Easting (ftUS)	Latitude (°)	Longitude (°)
Surface	0.00	0.00	0.00	0.00	0.00	0.00	0.00	N/A	1394423.60	3187036.52	40.414150	-104.828293
KB Adjustment	14.00	0.00	0.00	14.00	0.00	0.00	0.00	0.00	1394423.60	3187036.52	40.414150	-104.828293
Begin SLB_MWD Survey	127.00	0.66	60.85	127.00	-0.57	0.32	0.57	0.58	1394423.92	3187037.09	40.414151	-104.828291
9 5/8" Casing	215.00	0.80	179.09	214.99	-1.02	-0.05	1.02	1.43	1394423.56	3187037.54	40.414150	-104.828289
	307.00	2.08	207.46	306.96	-0.25	-2.17	0.26	1.55	1394421.43	3187036.80	40.414144	-104.828292
	397.00	2.87	218.26	396.88	1.91	-5.39	-1.89	1.02	1394418.19	3187034.67	40.414135	-104.828300
	487.00	3.98	215.04	486.72	5.12	-9.72	-5.08	1.25	1394413.84	3187031.52	40.414123	-104.828311
	577.00	5.30	214.82	576.42	9.31	-15.69	-9.24	1.47	1394407.84	3187027.40	40.414107	-104.828326
	667.00	6.63	217.91	665.93	14.91	-23.20	-14.81	1.52	1394400.29	3187021.89	40.414086	-104.828346
	757.00	8.48	215.04	755.15	21.95	-32.73	-21.81	2.10	1394390.70	3187014.96	40.414060	-104.828371
	847.00	9.85	211.39	844.00	29.83	-44.74	-29.63	1.65	1394378.64	3187007.23	40.414027	-104.828399
	937.00	10.47	208.57	932.59	37.81	-58.49	-37.55	0.88	1394364.82	3186999.41	40.413989	-104.828428
	1027.00	10.34	207.82	1021.11	45.55	-72.82	-45.23	0.21	1394350.44	3186991.84	40.413950	-104.828455
	1117.00	10.43	209.32	1109.63	53.37	-87.06	-52.99	0.32	1394336.14	3186984.19	40.413911	-104.828483
	1207.00	10.47	210.77	1198.14	61.61	-101.19	-61.16	0.30	1394321.95	3186976.13	40.413872	-104.828513
	1297.00	10.25	209.71	1286.67	69.82	-115.17	-69.32	0.32	1394307.91	3186968.08	40.413834	-104.828542
	1387.00	10.69	210.64	1375.17	78.10	-129.31	-77.54	0.52	1394293.71	3186959.97	40.413795	-104.828571
	1477.00	11.09	209.71	1463.55	86.71	-144.01	-86.08	0.49	1394278.94	3186951.53	40.413755	-104.828602
	1567.00	10.56	211.21	1551.95	95.34	-158.58	-94.65	0.67	1394264.31	3186943.08	40.413715	-104.828633
	1657.00	11.36	210.77	1640.31	104.21	-173.25	-103.45	0.89	1394249.57	3186934.38	40.413674	-104.828665
	1747.00	10.56	209.93	1728.67	112.92	-188.02	-112.10	0.91	1394234.75	3186925.85	40.413634	-104.828696
	1820.00	10.56	209.84	1800.43	119.64	-199.62	-118.77	0.02	1394223.10	3186919.27	40.413602	-104.828720
	1869.00	10.56	209.78	1848.60	124.14	-207.41	-123.23	0.02	1394215.27	3186914.86	40.413581	-104.828736
	1962.00	10.24	220.05	1940.08	133.75	-221.13	-132.79	2.02	1394201.48	3186905.42	40.413543	-104.828770
	2055.00	10.16	220.22	2031.61	144.42	-233.72	-143.40	0.09	1394188.80	3186894.90	40.413508	-104.828808
	2148.00	10.26	222.66	2123.14	155.38	-246.08	-154.31	0.48	1394176.37	3186884.08	40.413475	-104.828847
	2241.00	9.70	193.97	2214.79	162.95	-259.78	-161.82	5.32	1394162.61	3186876.68	40.413437	-104.828874
	2335.00	10.19	196.05	2307.37	167.23	-275.46	-166.03	0.65	1394146.90	3186872.59	40.413394	-104.828889
	2428.00	9.86	195.09	2398.95	171.65	-291.05	-170.38	0.40	1394131.28	3186868.36	40.413351	-104.828905
	2521.00	9.98	192.53	2490.56	175.54	-306.60	-174.20	0.49	1394115.70	3186864.65	40.413308	-104.828919
	2614.00	10.30	194.74	2582.11	179.47	-322.51	-178.06	0.54	1394099.76	3186860.91	40.413265	-104.828932
	2708.00	10.40	204.13	2674.59	185.14	-338.38	-183.67	1.80	1394083.85	3186855.43	40.413221	-104.828953
	2801.00	10.00	223.30	2766.14	194.18	-351.92	-192.64	3.66	1394070.24	3186846.56	40.413184	-104.828985
	2893.00	10.07	221.14	2856.74	205.00	-363.80	-203.41	0.42	1394058.29	3186835.88	40.413151	-104.829023
	2985.00	10.04	212.70	2947.33	214.68	-376.60	-213.04	1.60	1394045.41	3186826.35	40.413116	-104.829058
	3079.00	10.35	222.30	3039.85	224.85	-389.74	-223.15	1.84	1394032.19	3186816.34	40.413080	-104.829094
	3172.00	9.94	220.45	3131.40	235.73	-402.03	-233.98	0.56	1394019.82	3186805.60	40.413046	-104.829133
	3265.00	9.59	221.71	3223.05	246.14	-413.92	-244.34	0.44	1394007.85	3186795.33	40.413014	-104.829170
	3358.00	10.29	224.32	3314.65	257.15	-425.65	-255.30	0.89	1393996.05	3186784.46	40.412982	-104.829210
	3451.00	10.25	219.66	3406.17	268.29	-437.96	-266.38	0.89	1393983.65	3186773.47	40.412948	-104.829250
	3544.00	10.25	203.28	3497.70	276.90	-451.93	-274.93	3.12	1393969.61	3186765.03	40.412909	-104.829280
	3636.00	10.12	200.54	3588.25	283.04	-467.02	-281.01	0.55	1393954.48	3186759.07	40.412868	-104.829302
	3730.00	10.70	197.85	3680.71	288.68	-483.06	-286.58	0.80	1393938.40	3186753.62	40.412824	-104.829322
	3823.00	10.80	197.26	3772.07	293.99	-499.60	-291.81	0.16	1393921.82	3186748.51	40.412779	-104.829341
	3916.00	10.62	202.99	3863.46	299.99	-515.81	-297.74	1.16	1393905.57	3186742.71	40.412734	-104.829362
	4008.00	11.23	213.63	3953.80	308.33	-531.08	-306.02	2.29	1393890.24	3186734.55	40.412692	-104.829392
	4101.00	10.39	222.04	4045.15	319.02	-544.85	-316.65	1.92	1393876.39	3186724.02	40.412654	-104.829430
	4195.00	10.19	225.92	4137.64	330.72	-556.93	-328.30	0.77	1393864.22	3186712.46	40.412621	-104.829472
	4287.00	10.32	221.13	4228.17	342.04	-568.79	-339.56	0.94	1393852.27	3186701.29	40.412589	-104.829512
	4381.00	10.36	212.82	4320.65	352.22	-582.24	-349.68	1.59	1393838.75	3186691.27	40.412552	-104.829549
	4474.00	10.40	213.04	4412.13	361.39	-596.30	-358.79	0.06	1393824.62	3186682.27	40.412513	-104.829581
	4567.00	10.98	210.21	4503.52	370.49	-610.99	-367.83	0.84	1393809.86	3186673.35	40.412473	-104.829614
	4659.00	10.47	210.70	4593.91	379.23	-625.75	-376.50	0.56	1393795.04	3186664.78	40.412432	-104.829645
4752.00	10.55	215.22	4685.35	388.52	-639.98	-385.73	0.89	1393780.75	3186655.67	40.412393	-104.829678	
4844.00	10.68	219.23	4775.78	398.82	-653.46	-395.98	0.82	1393767.18	3186645.52	40.412356	-104.829715	
4938.00	10.54	211.06	4868.17	408.83	-667.57	-405.92	1.61	1393753.00	3186635.68	40.412318	-104.829751	
5031.00	10.48	200.11	4959.62	416.19	-682.80	-413.22	2.15	1393737.71	3186628.50	40.412276	-104.829777	
5126.00	9.83	193.22	5053.14	421.09	-698.81	-418.04	1.45	1393721.67	3186623.02	40.412232	-104.829794	
5218.00	10.30	196.97	5143.72	425.35	-714.32	-422.24	0.88	1393706.13	3186619.72	40.412189	-104.829809	
5313.00	9.80	206.52	5237.27	431.51	-729.68	-428.33	1.83	1393690.72	3186613.75	40.412147	-104.829831	
5408.00	10.36	211.94	5330.81	439.70	-744.17	-436.46	1.16	1393676.18	3186605.73	40.412107	-104.829860	
5502.00	10.29	220.16	5423.29	449.65	-757.75	-446.34	1.57	1393662.52	3186595.95	40.412070	-104.829896	
5596.00	10.38	222.67	5515.77	460.86	-770.40	-457.50	0.49	1393649.79	3186584.89	40.412035	-104.829936	
5689.00	9.89	218.66	5607.32	471.58	-782.79	-468.17	0.92	1393637.31	3186574.31	40.412001	-104.829974	
5781.00	10.26	211.45	5697.90	480.85	-795.95	-477.38	1.43	1393624.08	3186565.20	40.411965	-104.830007	
5875.00	10.68	208.60	5790.34	489.45	-810.74	-485.92	0.71	1393609.23	3186556.78	40.411925	-104.830038	
5968.00	10.15	201.14	5881.81	496.60	-825.95	-493.00	1.56	1393593.97	3186549.81	40.411883	-104.830063	
6060.00	10.83	195.97	5972.27	501.97	-841.82	-498.30	1.26	1393578.06	3186544.63	40.411839	-104.830082	
6153.00	10.51	198.65	6063.66	507.15	-858.26	-503.41	0.63	1393561.58	3186539.64	40.411794	-104.830101	
6247.00	10.61	204.24	6156.07	513.52	-874.28	-509.71	1.09	1393545.52	3186533.47	40.411750	-104.830123	
6344.00	10.75	208.79	6251.40	521.61	-890.35	-517.73	0.88	1393529.39	3186525.57	40.411706	-104.830152	
6440.00	10.63	206.17	6345.73	529.90	-906.14	-525.95	0.52	1393513.54	3186517.47	40.411663	-104.830182	
6533.00	10.31	209.92	6437.18	537.90	-921.05	-533.88	0.81	1393498.57	3186509.65	40.411622	-104.830210	
6626.00	10.59	225.50	6528.66	548.20	-934.26	-544.13	3.04	1393485.28	3186499.50	40.411586	-104.830247	
6718.00	15.20	233.29	6618.32	563.97	-947.40	-558.84	5.34	1393472.02	3186483.89	40.411549	-104.830303	

Comments	MD (ft)	Incl (°)	Azim True (°)	TVD (ft)	VSEC (ft)	NS (ft)	EW (ft)	DLS (°/100ft)	Northing (ftUS)	Easting (ftUS)	Latitude (°)	Longitude (°)
	6813.00	21.36	237.52	6708.49	588.64	-964.15	-584.44	6.63	1393455.09	3186459.42	40.411503	-104.830392
	6905.00	27.49	245.99	6792.24	622.29	-981.81	-618.02	7.66	1393437.17	3186425.98	40.411455	-104.830512
	6998.00	34.28	256.67	6872.06	667.54	-996.61	-663.19	9.36	1393422.03	3186380.92	40.411414	-104.830675
	7092.00	41.60	258.83	6946.15	724.04	-1008.78	-719.65	7.91	1393409.44	3186324.56	40.411381	-104.830877
	7185.00	48.65	259.70	7011.73	788.81	-1021.02	-784.36	7.61	1393396.71	3186259.95	40.411347	-104.831110
	7278.00	57.52	262.69	7067.54	862.27	-1032.27	-857.77	9.88	1393384.90	3186186.63	40.411316	-104.831373
	7372.00	64.14	264.95	7113.33	943.86	-1041.05	-939.32	7.35	1393375.51	3186105.15	40.411292	-104.831666
	7464.00	70.29	266.64	7148.95	1028.43	-1047.24	-1023.87	6.90	1393368.68	3186020.65	40.411275	-104.831970
	7557.00	76.61	268.76	7175.43	1117.47	-1050.79	-1112.90	7.14	1393364.46	3185931.66	40.411266	-104.832289
	7649.00	83.44	269.62	7191.36	1208.02	-1052.06	-1203.44	7.48	1393362.50	3185841.13	40.411262	-104.832615
	7741.00	89.81	269.28	7196.77	1299.82	-1052.94	-1295.23	6.93	1393360.92	3185749.35	40.411260	-104.832944
	7834.00	91.25	269.60	7195.91	1392.81	-1053.85	-1388.22	1.59	1393359.31	3185656.38	40.411257	-104.833278
	7926.00	91.42	269.34	7193.77	1484.78	-1054.70	-1480.19	0.34	1393357.76	3185564.42	40.411255	-104.833608
	8020.00	90.93	267.79	7191.84	1578.74	-1057.05	-1574.14	1.73	1393354.69	3185470.49	40.411248	-104.833946
	8113.00	91.38	269.01	7189.96	1671.69	-1059.65	-1667.08	1.40	1393351.39	3185377.58	40.411241	-104.834279
	8205.00	91.42	269.45	7187.72	1763.66	-1060.89	-1759.05	0.48	1393349.46	3185285.63	40.411238	-104.834610
	8298.00	91.65	269.35	7185.22	1856.63	-1061.86	-1852.01	0.27	1393347.78	3185192.68	40.411235	-104.834944
	8391.00	91.47	269.29	7182.69	1949.59	-1062.96	-1944.97	0.20	1393345.98	3185099.74	40.411232	-104.835277
	8485.00	91.30	269.97	7180.42	2043.56	-1063.57	-2038.94	0.75	1393344.66	3185005.78	40.411230	-104.835615
	8578.00	92.30	270.15	7177.50	2136.51	-1063.47	-2131.89	1.09	1393344.05	3184912.83	40.411231	-104.835949
	8669.00	92.38	269.80	7173.78	2227.43	-1063.51	-2222.82	0.39	1393343.32	3184821.91	40.411230	-104.836275
	8764.00	92.27	270.01	7169.93	2322.36	-1063.67	-2317.74	0.25	1393342.45	3184727.00	40.411230	-104.836616
	8856.00	92.52	271.00	7166.08	2414.27	-1062.86	-2409.65	1.11	1393342.56	3184635.09	40.411232	-104.836946
	8949.00	91.47	269.14	7162.85	2507.20	-1062.75	-2502.59	2.30	1393341.97	3184542.15	40.411233	-104.837280
	9041.00	91.35	270.22	7160.58	2599.17	-1063.26	-2594.56	1.18	1393340.76	3184450.20	40.411231	-104.837610
	9134.00	91.09	270.70	7158.60	2692.15	-1062.51	-2687.53	0.59	1393340.80	3184357.22	40.411233	-104.837944
	9228.00	91.53	270.51	7156.45	2786.11	-1061.52	-2781.50	0.51	1393341.08	3184263.25	40.411236	-104.838281
	9320.00	92.06	270.13	7153.57	2878.06	-1061.01	-2873.46	0.71	1393340.90	3184171.30	40.411237	-104.838612
	9412.00	92.26	270.04	7150.10	2969.99	-1060.87	-2965.39	0.24	1393340.34	3184079.37	40.411238	-104.838942
	9506.00	92.12	269.81	7146.51	3063.92	-1061.00	-3069.32	0.29	1393339.50	3183985.45	40.411237	-104.839279
	9599.00	91.79	270.39	7143.34	3156.87	-1060.83	-3152.27	0.72	1393338.96	3183892.51	40.411238	-104.839613
	9691.00	91.15	270.33	7140.98	3248.83	-1060.26	-3244.24	0.70	1393338.84	3183800.54	40.411239	-104.839943
	9785.00	90.80	269.47	7139.38	3342.82	-1060.42	-3338.22	0.99	1393337.97	3183706.56	40.411239	-104.840280
	9877.00	91.07	270.66	7137.88	3434.80	-1060.31	-3430.21	1.33	1393337.38	3183614.58	40.411239	-104.840611
	9970.00	91.23	270.20	7136.01	3527.78	-1059.62	-3523.19	0.52	1393337.37	3183521.61	40.411241	-104.840945
	10063.00	91.31	270.36	7133.95	3620.75	-1059.16	-3616.16	0.19	1393337.12	3183428.63	40.411242	-104.841279
	10155.00	91.11	270.17	7132.01	3712.72	-1058.74	-3708.14	0.30	1393336.85	3183336.66	40.411243	-104.841609
	10248.00	91.22	269.90	7130.12	3805.70	-1058.68	-3801.12	0.31	1393336.20	3183243.68	40.411243	-104.841943
	10340.00	91.70	270.19	7127.77	3897.67	-1058.61	-3893.09	0.61	1393335.58	3183151.72	40.411243	-104.842273
	10433.00	91.58	270.34	7125.11	3990.63	-1058.18	-3986.05	0.21	1393335.30	3183058.76	40.411245	-104.842607
	10526.00	91.66	270.49	7122.48	4083.59	-1057.50	-4079.01	0.18	1393335.27	3182965.80	40.411246	-104.842941
	10619.00	91.72	270.17	7119.74	4176.54	-1056.97	-4171.97	0.35	1393335.10	3182872.85	40.411248	-104.843274
	10713.00	91.26	270.55	7117.30	4270.50	-1056.38	-4265.94	0.63	1393334.98	3182778.88	40.411249	-104.843612
	10806.00	91.22	270.08	7115.28	4363.48	-1055.87	-4358.91	0.51	1393334.79	3182685.91	40.411251	-104.843946
	10900.00	90.08	270.52	7114.22	4457.47	-1055.38	-4452.90	1.30	1393334.57	3182591.92	40.411252	-104.844283
	10993.00	89.43	269.80	7114.61	4550.46	-1055.12	-4545.90	1.04	1393334.12	3182498.93	40.411253	-104.844617
	11085.00	89.20	270.38	7115.71	4642.45	-1054.97	-4637.89	0.68	1393333.57	3182406.94	40.411253	-104.844948
	11177.00	89.28	270.54	7116.93	4734.44	-1054.23	-4729.88	0.19	1393333.61	3182314.95	40.411255	-104.845278
	11269.00	90.42	270.92	7117.18	4826.42	-1053.06	-4821.87	1.31	1393334.09	3182222.96	40.411258	-104.845608
	11362.00	90.02	269.67	7116.82	4919.41	-1052.58	-4914.87	1.41	1393333.86	3182129.97	40.411259	-104.845942
	11454.00	90.16	270.44	7116.67	5011.41	-1052.49	-5006.87	0.85	1393333.25	3182037.97	40.411260	-104.846273
	11547.00	90.27	270.45	7116.32	5104.41	-1051.77	-5099.86	0.12	1393333.27	3181944.98	40.411262	-104.846607
	11639.00	90.41	269.82	7115.78	5196.40	-1051.55	-5191.86	0.70	1393332.79	3181852.98	40.411262	-104.846937
	11732.00	90.03	269.27	7115.42	5289.40	-1052.29	-5284.86	0.72	1393331.35	3181760.00	40.411260	-104.847271
	11826.00	90.07	269.05	7115.34	5383.39	-1053.67	-5378.85	0.24	1393329.26	3181666.03	40.411266	-104.847608
	11918.00	90.38	269.28	7114.98	5475.39	-1055.01	-5470.84	0.42	1393327.22	3181574.06	40.411262	-104.847939
	12011.00	90.30	268.96	7114.43	5568.38	-1056.44	-5563.82	0.35	1393325.09	3181481.09	40.411248	-104.848273
	12106.00	90.17	269.28	7114.04	5663.37	-1057.90	-5665.81	0.36	1393322.91	3181386.12	40.411244	-104.848614
	12200.00	90.35	270.25	7113.61	5757.37	-1058.28	-5752.81	1.05	1393321.81	3181292.13	40.411243	-104.848951
	12292.00	89.69	269.36	7113.58	5849.37	-1058.60	-5844.81	1.20	1393320.80	3181200.14	40.411242	-104.849282
	12385.00	89.79	269.19	7114.00	5942.37	-1059.77	-5937.80	0.21	1393318.92	3181107.16	40.411239	-104.849616
	12479.00	89.75	269.70	7114.38	6036.36	-1060.69	-6031.79	0.54	1393317.30	3181013.18	40.411237	-104.849953
	12572.00	91.28	269.99	7113.54	6129.36	-1060.94	-6124.79	1.67	1393316.34	3180920.20	40.411236	-104.850287
	12664.00	91.32	269.92	7111.45	6221.33	-1061.01	-6216.76	0.09	1393315.57	3180828.23	40.411235	-104.850617
	12757.00	91.26	269.27	7109.36	6314.31	-1061.67	-6309.74	0.70	1393314.21	3180735.27	40.411234	-104.850951
	12850.00	91.29	269.31	7107.29	6407.28	-1062.82	-6402.71	0.05	1393312.36	3180642.31	40.411230	-104.851285
	12943.00	91.25	269.12	7105.23	6500.26	-1064.09	-6495.67	0.21	1393310.38	3180549.36	40.411227	-104.851619
	13035.00	91.19	269.57	7103.27	6592.23	-1065.14	-6587.65	0.49	1393308.63	3180457.40	40.411224	-104.851949
	13128.00	91.17	269.41	7101.36	6685.21	-1065.97	-6680.62	0.17	1393307.10	3180364.44	40.411222	-104.852283
	13222.00	89.72	269.46	7100.63	6779.20	-1066.90	-6774.61	1.54	1393305.46	3180270.46	40.411219	-104.852620
	13316.00	89.82	269.93	7101.00	6873.20	-1067.40	-6868.61	0.51	1393304.25	3180176.47	40.411217	-104.852958
	13410.00	89.81	269.19	7101.31	6967.20	-1068.12	-6962.61	0.79	1393302.81	3180082.49	40.411215	-104.853296
	13505.00	89.66	269.47	7101.75	7062.20	-1069.23	-7057.60	0.33	1393300.98	3179987.51	40.411212	-104.853637
	13599.00	89.69	268.96	7102.28	7156.19	-1070.52	-7151.59	0.54	1393298.98	3179893.54	40.411209	-104.853974
	13693.00	89.72	268.94	7102.76	7250.18	-1072.24	-7245.57	0.04	1393296.55	3179799.57	40.411204	-104.854312
	13788.00	89.74	269.18	7103.21	7345.17	-1073.80	-7340.56	0.25	1393294.27	3179704.61	40.411200	-104.854653
	13882.00	90.55	270.13	7102.97	7439.17	-1074.37	-7434.55	1.33	1393292.99	3179610.62	40.411198	-104.854990
	13975.00	90.										

Comments	MD (ft)	Incl (°)	Azim True (°)	TVD (ft)	VSEC (ft)	NS (ft)	EW (ft)	DLS (°/100ft)	Northing (ftUS)	Easting (ftUS)	Latitude (°)	Longitude (°)
	16937.00	91.71	269.26	7090.86	10493.85	-1060.76	-10489.32	1.71	1393283.46	3176555.97	40.411232	-104.865960
	17030.00	91.08	268.94	7088.59	10586.81	-1062.22	-10582.28	0.76	1393281.30	3176463.02	40.411228	-104.866294
	17123.00	90.24	269.76	7087.52	10679.80	-1063.27	-10675.27	1.26	1393279.54	3176370.05	40.411225	-104.866628
	17215.00	90.25	269.80	7087.13	10771.80	-1063.62	-10767.27	0.04	1393278.49	3176278.06	40.411224	-104.866958
	17308.00	90.32	269.73	7086.66	10864.80	-1064.01	-10860.26	0.11	1393277.40	3176185.07	40.411223	-104.867292
	17402.00	90.21	269.16	7086.23	10958.80	-1064.92	-10954.26	0.62	1393275.78	3176091.09	40.411220	-104.867629
	17587.00	90.25	269.60	7085.49	11143.79	-1066.92	-11139.24	0.24	1393272.38	3175906.13	40.411215	-104.868294
	17679.00	90.27	269.04	7085.07	11235.79	-1068.01	-11231.24	0.61	1393270.59	3175814.16	40.411211	-104.868624
	17741.00	90.16	268.99	7084.84	11297.78	-1069.08	-11293.23	0.19	1393269.06	3175752.18	40.411208	-104.868847
Last SLB_MWD Survey	17833.00	90.38	269.25	7084.40	11389.78	-1070.49	-11385.22	0.37	1393266.95	3175660.21	40.411204	-104.869177
Projection to Bit	17934.00	90.38	269.25	7083.73	11490.77	-1071.81	-11486.20	0.00	1393264.86	3175559.24	40.411201	-104.869540

Survey Type: Def Survey

Survey Error Model: ISCWSA Rev 0 *** 3-D 95.000% Confidence 2.7955 sigma

Survey Program:

Description	Part	MD From (ft)	MD To (ft)	EOU Freq (ft)	Hole Size (in)	Casing Diameter (in)	Survey Tool Type	Borehole / Survey
	1	0.000	20.000	1/98.425	13.500	9.625	NAL_MWD_IFR1-Depth Only	Original Hole / Bost Farm 12C-11-L IFR 0' to 17934' Definitive
	1	20.000	1820.000	Act Stns	13.500	9.625	NAL_MWD_IFR1	Original Hole / Bost Farm 12C-11-L IFR 0' to 17934' Definitive
	1	1820.000	17934.000	Act Stns	8.500	5.500	NAL_MWD_IFR1+MS	Original Hole / Bost Farm 12C-11-L IFR 0' to 17934' Definitive