

SR
Welcome to
productive drilling

Schlumberger

END OF WELL REPORT

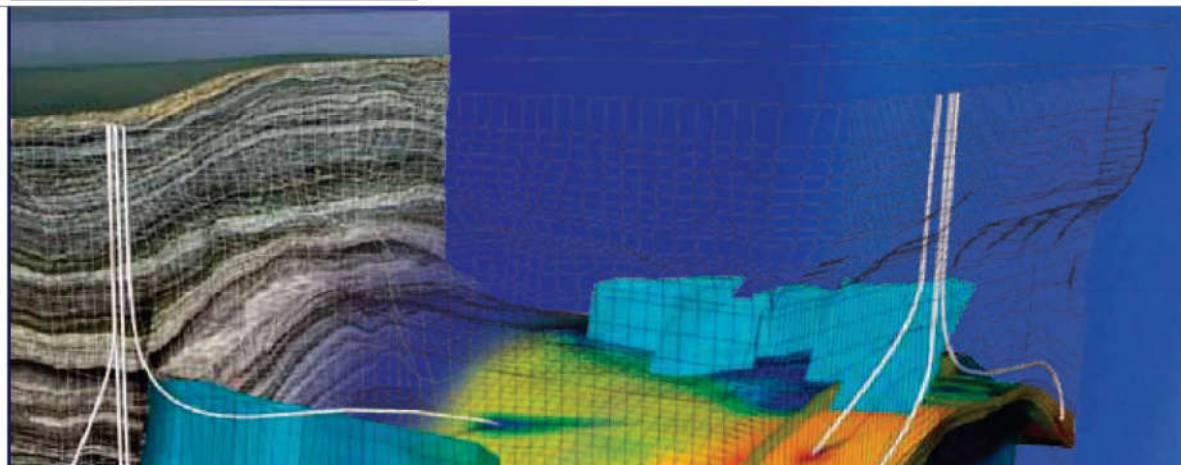
CLIENT - SRC Energy

RIG NAME - PD 462

WELL NAME - Bost Farm 12N-11B-L

COUNTY - Weld County, CO

DATE - Oct 3, 2019



Bost Farm 12N-11B-L IFR 0' to 17684' Definitive Survey Geodetic Report

(Def Survey)

Report Date: October 08, 2019 - 12:41 PM
Client: SRC Energy
Field: CO, Weld County (NAD 83 NZ) - SRC
Structure / Slot: SRC Energy 07-05N-66W (Bost Farm 5-7 Pad DSU 20) / Bost Farm 12N-11B-L
Well: Bost Farm 12N-11B-L
Borehole: Original Hole
UWI / API#: Unknown / 05-123-50250
Survey Name: Bost Farm 12N-11B-L IFR 0' to 17684' Definitive
Survey Date: May 29, 2019
Tort / AHD / DDI / ERD Ratio: 224.943 ° / 11921.746 ft / 6.831 / 1.705
Coordinate Reference System: NAD83 Colorado State Plane, Northern Zone, US Feet
Location Lat / Long: N 40° 24' 50.94360", W 104° 49' 42.11400"
Location Grid N/E Y/X: N 1394423.811 ftUS, E 3187016.469 ftUS
CRS Grid Convergence Angle: 0.4340 °
Grid Scale Factor: 0.9999609
Version / Patch: 2.10.782.0

Survey / DLS Computation: Minimum Curvature / Lubinski
Vertical Section Azimuth: 269.650 ° (True North)
Vertical Section Origin: 0.000 ft, 0.000 ft
TVD Reference Datum: KB 20ft
TVD Reference Elevation: 4893.000 ft above MSL
Seabed / Ground Elevation: 4873.000 ft above MSL
Magnetic Declination: 7.600 °
Total Gravity Field Strength: 999.0244mgn (9.80665 Based)
Gravity Model: GARM
Total Magnetic Field Strength: 52214.000 nT
Magnetic Dip Angle: 66.600 °
Declination Date: September 15, 2019
Magnetic Declination Model: Magvar IFR
North Reference: True North
Grid Convergence Used: 0.0000 °
Total Corr Mag North->True North: 7.6000 °
Local Coord Referenced To: Well Head

Comments	MD (ft)	Incl (°)	Azim True (°)	TVD (ft)	VSEC (ft)	NS (ft)	EW (ft)	DLS (°/100ft)	Northing (ftUS)	Easting (ftUS)	Latitude (°)	Longitude (°)
Surface	0.00	0.00	0.00	0.00	0.00	0.00	0.00	N/A	1394423.81	3187016.47	40.414151	-104.828365
KB Adjustment	14.00	0.00	0.00	14.00	0.00	0.00	0.00	0.00	1394423.81	3187016.47	40.414151	-104.828365
Begin												
SLB_MWD	127.00	0.31	116.29	127.00	-0.27	-0.14	0.27	0.27	1394423.68	3187016.74	40.414151	-104.828364
Survey												
	215.00	1.06	207.51	214.99	-0.11	-0.96	0.11	1.26	1394422.85	3187016.59	40.414148	-104.828365
	307.00	2.74	221.48	306.94	1.76	-3.37	-1.74	1.88	1394420.43	3187014.76	40.414142	-104.828371
	397.00	4.15	219.01	396.78	5.26	-7.51	-5.21	1.57	1394416.26	3187011.31	40.414130	-104.828384
	487.00	5.48	218.00	486.46	9.99	-13.42	-9.91	1.48	1394410.31	3187006.66	40.414114	-104.828401
	577.00	6.85	211.08	575.93	15.46	-21.41	-15.33	1.73	1394402.29	3187001.31	40.414092	-104.828420
	667.00	8.31	212.80	665.15	21.81	-31.47	-21.62	1.64	1394392.18	3186995.09	40.414065	-104.828443
	757.00	9.10	214.91	754.11	29.48	-42.78	-29.22	0.95	1394380.82	3186987.58	40.414034	-104.828470
	847.00	8.97	213.06	842.99	37.45	-54.49	-37.12	0.35	1394369.04	3186979.77	40.414001	-104.828498
	937.00	9.24	211.78	931.86	45.16	-66.52	-44.75	0.38	1394356.96	3186972.23	40.413968	-104.828526
	1027.00	9.54	211.74	1020.65	52.96	-79.00	-52.48	0.33	1394344.42	3186964.59	40.413934	-104.828553
	1117.00	10.30	213.11	1109.31	61.36	-92.08	-60.80	0.88	1394331.27	3186956.37	40.413898	-104.828583
	1207.00	11.05	213.50	1197.75	70.60	-106.02	-69.95	0.84	1394317.27	3186947.32	40.413860	-104.828616
	1297.00	10.91	214.16	1286.10	80.23	-120.25	-79.50	0.21	1394302.96	3186937.89	40.413821	-104.828650
	1387.00	10.83	212.75	1374.49	89.67	-134.41	-88.85	0.31	1394288.73	3186928.64	40.413782	-104.828684
	1477.00	10.56	212.18	1462.92	98.72	-148.51	-97.82	0.32	1394274.58	3186919.78	40.413743	-104.828716
	1567.00	10.08	211.12	1551.47	107.27	-162.23	-106.28	0.57	1394260.79	3186911.42	40.413706	-104.828747
	1657.00	10.34	211.70	1640.04	115.67	-175.84	-114.60	0.31	1394247.11	3186903.21	40.413668	-104.828777
	1747.00	9.72	211.92	1728.66	124.01	-189.16	-122.86	0.69	1394233.73	3186895.05	40.413632	-104.828806
	1758.00	9.54	211.74	1739.51	124.99	-190.73	-123.83	1.66	1394232.16	3186894.09	40.413627	-104.828810
	1815.00	9.43	211.95	1795.73	130.00	-198.70	-128.78	0.21	1394224.14	3186889.20	40.413606	-104.828827
	1869.00	9.32	212.16	1849.01	134.71	-206.16	-133.45	0.21	1394216.66	3186884.59	40.413585	-104.828844
	1962.00	9.76	212.05	1940.72	142.98	-219.21	-141.64	0.47	1394203.54	3186876.50	40.413549	-104.828874
	2056.00	9.17	212.46	2033.44	151.31	-232.29	-149.89	0.63	1394190.40	3186868.35	40.413513	-104.828903
	2148.00	10.92	204.06	2124.03	158.88	-246.43	-157.38	2.48	1394176.20	3186860.97	40.413475	-104.828930
	2242.00	10.25	200.44	2216.44	165.53	-262.40	-163.93	1.00	1394160.19	3186854.54	40.413431	-104.828954
	2335.00	10.88	204.28	2307.86	172.12	-278.15	-170.43	1.02	1394144.39	3186848.16	40.413387	-104.828977
	2429.00	11.71	241.76	2400.16	184.27	-290.77	-182.50	7.72	1394131.68	3186836.19	40.413353	-104.829020
	2521.00	11.16	236.39	2490.34	199.97	-300.12	-198.14	1.30	1394122.21	3186820.82	40.413327	-104.829077
	2615.00	11.52	216.54	2582.54	213.21	-312.70	-211.31	4.15	1394109.53	3186807.55	40.413293	-104.829124
	2709.00	11.86	214.36	2674.59	224.35	-328.21	-222.35	0.59	1394093.94	3186796.62	40.413250	-104.829163
	2801.00	11.84	214.99	2764.63	235.19	-343.75	-233.09	0.14	1394078.32	3186785.99	40.413207	-104.829202
	2894.00	11.24	217.64	2855.75	246.29	-358.74	-244.10	0.86	1394063.24	3186775.10	40.413166	-104.829242
	2986.00	10.54	216.22	2946.09	256.82	-372.63	-254.55	0.81	1394049.28	3186764.76	40.413128	-104.829279
	3080.00	10.04	208.52	3038.58	265.90	-386.77	-263.54	1.56	1394035.07	3186755.87	40.413089	-104.829311
	3172.00	10.01	201.42	3129.18	272.74	-401.26	-270.29	1.34	1394020.53	3186749.24	40.413050	-104.829336
	3266.00	11.41	205.48	3221.54	279.82	-417.26	-277.28	1.69	1394004.48	3186742.37	40.413006	-104.829361
	3358.00	10.94	204.51	3311.80	287.45	-433.42	-284.81	0.55	1393988.27	3186734.96	40.412961	-104.829388
	3452.00	10.76	205.23	3404.12	294.99	-449.47	-292.25	0.24	1393972.16	3186727.64	40.412917	-104.829414
	3545.00	10.58	210.33	3495.51	303.10	-464.69	-300.26	1.03	1393956.87	3186719.74	40.412875	-104.829443
	3637.00	10.65	210.28	3585.94	311.74	-479.33	-308.82	0.08	1393942.18	3186711.30	40.412835	-104.829474
	3731.00	11.90	209.90	3678.12	321.05	-495.23	-318.03	1.33	1393926.21	3186702.21	40.412792	-104.829507
	3824.00	11.66	209.57	3769.16	330.56	-511.72	-327.44	0.27	1393909.65	3186692.92	40.412746	-104.829541
	3917.00	11.81	211.89	3860.22	340.33	-527.97	-337.11	0.53	1393893.32	3186683.38	40.412702	-104.829576
	4009.00	11.90	212.13	3950.26	350.45	-544.00	-347.13	0.11	1393877.22	3186673.48	40.412658	-104.829612
	4102.00	10.93	213.94	4041.42	360.56	-559.43	-357.15	1.11	1393861.71	3186663.58	40.412615	-104.829648
	4195.00	11.28	214.95	4132.67	370.78	-574.20	-367.28	0.43	1393846.87	3186653.56	40.412575	-104.829684
	4288.00	11.35	215.19	4223.87	381.36	-589.13	-377.77	0.09	1393831.86	3186643.19	40.412534	-104.829722
	4381.00	10.93	218.76	4315.12	392.24	-603.49	-388.56	0.87	1393817.42	3186632.50	40.412494	-104.829760
	4475.00	11.66	220.93	4407.29	404.13	-617.61	-400.36	0.90	1393803.21	3186620.81	40.412456	-104.829803
	4567.00	11.37	221.36	4497.44	416.30	-631.45	-412.45	0.33	1393789.29	3186608.83	40.412418	-104.829846
	4660.00	11.03	218.96	4588.67	428.03	-645.24	-424.10	0.62	1393775.40	3186597.29	40.412380	-104.829888
	4753.00	10.90	212.77	4679.98	438.47	-659.56	-434.45	1.27	1393761.01	3186587.01	40.412341	-104.829925
	4845.00	11.27	210.39	4770.26	447.82	-674.62	-443.71	0.64	1393745.87	3186577.90	40.412299	-104.829958
	4938.00	11.26	207.03	4861.47	456.64	-690.55	-452.43	0.71	1393729.88	3186569.30	40.412255	-104.829990
	5031.00	11.38	205.84	4952.66	464.87	-706.90	-460.56	0.28	1393713.47	3186561.30	40.412211	-104.830019
	5127.00	10.78	204.79	5046.87	472.86	-723.57	-468.45	0.66	1393696.74	3186553.53	40.412165	-104.830047
	5219.00	11.04	207.69	5137.21	480.66	-739.18	-476.15	0.66	1393681.07	3186545.95	40.412122	-104.830075
	5313.00	10.66	212.31	5229.53	489.58	-754.50	-484.98	1.01	1393665.69	3186537.24	40.412080	-104.830107
	5408.00	10.81	212.06	5322.87	499.10	-769.48	-494.41	0.17	1393650.64	3186527.92	40.412039	-104.830140
	5503.00	10.86	213.24	5416.17	508.82	-784.51	-504.04	0.24	1393635.54	3186518.40	40.411998	-104.830175
	5596.00	12.33	216.62	5507.28	519.64	-799.81	-514.77	1.74	1393620.16	3186507.80	40.411956	-104.830214
	5690.00	8.57	217.90	5599.70	530.02	-813.40	-525.06	4.01	1393606.49	3186497.61	40.411918	-104.830250
	5782.00	5.13	218.31	5691.03	536.83	-822.04	-531.82	3.74	1393597.80	3186490.91	40.411895	-104.830275
	5876.00	1.79	230.52	5784.85	540.60	-826.27	-535.56	3.62	1393593.54	3186487.20	40.411883	-104.830288
	5968.00	0.19	318.45	5876.83	541.81	-827.07	-536.77	1.95	1393592.73	3186486.00	40.411881	-104.830293
	6060.00	0.28	82.72	5968.83	541.69	-826.93	-536.65	0.45	1393592.88	3186486.12	40.411881	-104.830292
	6154.00	0.23	337.48	6062.83	541.54	-826.72	-536.49	0.43	1393593.08	3186486.27	40.411882	-104.830292
	6248.00	0.32	7.54	6156.83	541.57	-826.29	-536.53	0.18	1393593.52	3186486.23	40.411883	-104.830292
	6344.00	0.21	319.22	6252.83	541.65	-825.89	-536.61	0.25	1393593.91	3186486.15	40.411884	-104.830292
	6441.00	10.42	282.04	6349.28	550.35	-823.92	-545.33	10.57	1393595.82	3186477.42	40.411889	-104.830323
	6534.00	16.82	279.77	6349.62	571.84	-819.88	-566.84					

Comments	MD (ft)	Incl (°)	Azim True (°)	TVD (ft)	VSEC (ft)	NS (ft)	EW (ft)	DLS (°/100ft)	Northing (ftUS)	Easting (ft)	Latitude (°)	Longitude (°)
	6813.00	36.73	266.86	6687.53	696.59	-819.78	-691.60	7.31	1393598.85	3186331.13	40.411901	-104.830849
	6906.00	42.58	266.35	6759.10	755.83	-823.31	-750.82	6.30	1393594.87	3186271.94	40.411891	-104.831061
	6998.00	49.56	268.99	6822.89	822.00	-825.91	-816.97	7.86	1393591.77	3186205.81	40.411884	-104.831299
	7093.00	57.26	272.02	6879.48	898.19	-825.14	-893.17	8.50	1393591.96	3186129.61	40.411886	-104.831572
	7186.00	66.24	272.83	6923.46	979.93	-821.65	-974.93	9.69	1393594.83	3186047.83	40.411886	-104.831866
	7279.00	73.29	270.96	6955.61	1067.07	-818.80	-1062.09	7.81	1393597.02	3185960.66	40.411903	-104.832179
	7373.00	79.41	270.42	6977.78	1158.36	-817.71	-1153.38	6.53	1393597.42	3185869.36	40.411906	-104.832507
	7465.00	86.70	271.03	6988.90	1249.60	-816.55	-1244.64	7.95	1393597.89	3185778.10	40.411910	-104.832835
	7557.00	89.37	270.00	6992.05	1341.53	-815.73	-1336.57	3.11	1393598.02	3185686.17	40.411912	-104.833165
	7650.00	89.92	269.21	6992.63	1434.53	-816.37	-1429.57	1.04	1393596.67	3185593.19	40.411910	-104.833499
	7742.00	90.79	270.06	6992.06	1526.52	-816.95	-1521.56	1.32	1393595.39	3185501.20	40.411908	-104.833829
	7834.00	91.86	269.41	6989.93	1618.50	-817.38	-1613.53	1.36	1393594.27	3185409.24	40.411907	-104.834159
	7927.00	91.44	269.56	6987.25	1711.46	-818.21	-1706.49	0.48	1393592.73	3185316.29	40.411905	-104.834493
	8020.00	91.39	270.02	6984.95	1804.43	-818.55	-1799.46	0.50	1393591.68	3185223.33	40.411904	-104.834827
	8113.00	91.40	269.21	6982.69	1897.40	-819.18	-1892.43	0.87	1393590.36	3185130.37	40.411902	-104.835161
	8206.00	91.44	269.48	6980.39	1990.37	-820.24	-1985.40	0.29	1393588.59	3185037.42	40.411899	-104.835495
	8298.00	90.53	269.34	6978.80	2082.35	-821.19	-2077.38	1.00	1393586.95	3184945.46	40.411897	-104.835825
	8391.00	91.10	269.52	6977.48	2175.34	-822.11	-2170.36	0.64	1393585.32	3184852.48	40.411894	-104.836159
	8485.00	91.04	269.48	6975.73	2269.33	-822.93	-2264.34	0.08	1393583.78	3184758.52	40.411892	-104.836496
	8578.00	90.76	269.54	6974.26	2362.31	-823.73	-2357.33	0.31	1393582.28	3184665.55	40.411890	-104.836830
	8670.00	90.83	270.06	6972.99	2454.31	-824.05	-2449.32	0.57	1393581.27	3184573.56	40.411889	-104.837161
	8765.00	91.00	269.91	6971.47	2549.29	-824.08	-2544.30	0.24	1393580.52	3184478.58	40.411889	-104.837502
	8857.00	90.43	269.60	6970.32	2641.28	-824.47	-2636.30	0.71	1393579.43	3184386.60	40.411888	-104.837832
	8949.00	90.57	269.98	6969.52	2733.28	-824.81	-2728.29	0.44	1393578.40	3184294.61	40.411887	-104.838162
	9042.00	90.86	270.93	6968.36	2826.26	-824.07	-2821.28	1.07	1393578.43	3184201.63	40.411889	-104.838496
	9135.00	90.86	270.60	6966.96	2919.23	-822.83	-2914.26	0.35	1393578.97	3184108.64	40.411892	-104.838830
	9228.00	90.92	270.47	6965.52	3012.21	-821.96	-3007.25	0.15	1393579.13	3184015.66	40.411894	-104.839164
	9321.00	90.28	269.24	6964.55	3105.20	-822.19	-3100.24	1.49	1393578.19	3183922.67	40.411894	-104.839498
	9413.00	90.71	270.72	6963.75	3197.20	-822.23	-3192.23	1.68	1393577.47	3183830.69	40.411894	-104.839828
	9506.00	90.82	269.61	6962.51	3290.18	-821.96	-3285.22	1.20	1393577.03	3183737.70	40.411894	-104.840162
	9599.00	90.94	269.61	6961.08	3383.17	-822.59	-3378.21	0.13	1393575.69	3183644.73	40.411892	-104.840496
	9786.00	90.16	270.40	6959.29	3570.16	-822.57	-3565.20	0.59	1393574.29	3183457.75	40.411892	-104.841168
	9878.00	89.92	269.78	6959.22	3662.15	-822.43	-3657.20	0.72	1393573.74	3183365.76	40.411893	-104.841498
	9971.00	89.62	269.18	6959.59	3755.15	-823.27	-3750.19	0.72	1393572.19	3183272.77	40.411890	-104.841832
	10064.00	89.39	269.01	6960.40	3848.14	-824.74	-3843.18	0.31	1393570.02	3183179.81	40.411886	-104.842166
	10156.00	89.94	269.15	6960.94	3940.14	-826.22	-3935.16	0.62	1393567.84	3183087.84	40.411882	-104.842496
	10248.00	89.57	268.66	6961.33	4032.13	-827.98	-4027.15	0.67	1393565.39	3182995.88	40.411877	-104.842827
	10341.00	90.41	269.72	6961.35	4125.12	-829.29	-4120.13	1.45	1393563.37	3182902.90	40.411874	-104.843160
	10434.00	89.84	268.41	6961.14	4218.12	-830.81	-4213.12	1.54	1393561.15	3182809.94	40.411870	-104.843494
	10527.00	90.05	269.32	6961.23	4311.11	-832.65	-4306.10	1.00	1393558.60	3182716.98	40.411864	-104.843828
	10620.00	90.32	269.99	6960.93	4404.10	-833.21	-4399.10	0.78	1393557.34	3182623.99	40.411863	-104.844162
	10714.00	90.52	269.83	6960.24	4498.10	-833.36	-4493.09	0.27	1393556.48	3182530.00	40.411862	-104.844500
	10807.00	90.64	270.53	6959.30	4591.09	-833.07	-4586.09	0.76	1393556.07	3182437.01	40.411863	-104.844834
	10900.00	90.49	270.37	6958.38	4684.08	-832.34	-4679.08	0.24	1393556.09	3182344.02	40.411865	-104.845168
	10993.00	89.91	268.89	6958.06	4777.07	-832.94	-4772.07	1.71	1393554.79	3182251.04	40.411863	-104.845502
	11085.00	90.59	269.52	6957.66	4869.07	-834.21	-4864.06	1.01	1393552.82	3182159.06	40.411860	-104.845832
	11178.00	90.57	269.37	6956.72	4962.06	-835.11	-4957.06	0.16	1393551.21	3182066.08	40.411857	-104.846166
	11270.00	89.95	269.53	6956.30	5054.06	-836.00	-5049.05	0.70	1393549.63	3181974.10	40.411855	-104.846496
	11363.00	90.56	269.89	6955.89	5147.06	-836.47	-5142.05	0.76	1393548.46	3181881.12	40.411854	-104.846830
	11455.00	90.33	270.12	6955.17	5239.06	-836.46	-5234.04	0.35	1393547.77	3181789.13	40.411853	-104.847161
	11547.00	89.66	268.63	6955.18	5331.05	-837.46	-5326.04	1.78	1393546.07	3181697.15	40.411851	-104.847491
	11640.00	89.70	269.30	6955.70	5424.04	-839.14	-5419.02	0.72	1393543.68	3181604.18	40.411846	-104.847825
	11732.00	89.70	270.39	6956.18	5516.04	-839.39	-5511.02	1.18	1393542.74	3181512.20	40.411845	-104.848155
	11826.00	89.65	269.79	6956.71	5610.04	-839.25	-5605.01	0.64	1393542.17	3181418.20	40.411846	-104.848493
	11919.00	89.88	269.64	6957.09	5703.03	-839.71	-5698.01	0.30	1393541.01	3181325.22	40.411844	-104.848827
	12012.00	90.02	268.87	6957.18	5796.03	-840.92	-5791.00	0.84	1393539.09	3181232.24	40.411841	-104.849161
	12107.00	89.86	268.83	6957.28	5891.02	-842.82	-5885.98	0.17	1393536.47	3181137.28	40.411836	-104.849502
	12201.00	89.80	269.73	6957.55	5985.02	-844.00	-5979.97	0.96	1393534.57	3181043.30	40.411832	-104.849839
	12293.00	89.72	269.38	6957.94	6077.02	-844.72	-6071.97	0.39	1393533.16	3180951.32	40.411830	-104.850170
	12385.00	89.76	269.59	6958.36	6169.02	-845.55	-6163.97	0.23	1393531.64	3180859.34	40.411828	-104.850500
	12479.00	89.85	269.13	6958.68	6263.01	-846.60	-6257.96	0.50	1393529.88	3180765.36	40.411825	-104.850837
	12573.00	89.87	269.08	6958.91	6357.01	-848.06	-6351.95	0.06	1393527.70	3180671.39	40.411821	-104.851175
	12665.00	89.77	269.98	6959.20	6449.01	-848.82	-6443.94	0.98	1393526.25	3180579.40	40.411819	-104.851505
	12758.00	91.09	269.93	6958.50	6542.00	-848.89	-6536.94	1.42	1393525.47	3180486.42	40.411819	-104.851839
	12851.00	90.82	268.93	6958.95	6634.99	-849.82	-6629.92	1.11	1393523.84	3180393.45	40.411816	-104.852173
	12944.00	90.62	269.63	6958.78	6727.98	-850.99	-6722.90	0.78	1393521.97	3180300.48	40.411813	-104.852507
	13036.00	90.79	270.01	6958.65	6819.97	-851.27	-6814.90	0.45	1393520.98	3180208.50	40.411812	-104.852837
	13128.00	90.83	269.79	6958.35	6911.96	-851.44	-6906.89	0.24	1393520.12	3180116.51	40.411811	-104.853168
	13222.00	90.66	269.02	6958.12	7005.95	-852.41	-7000.87	0.84	1393518.44	3180022.54	40.411808	-104.853505
	13316.00	90.81	270.14	6958.92	7099.94	-853.10	-7094.86	1.20	1393517.03	3179928.56	40.411807	-104.853843
	13411.00	90.82	269.80	6949.57	7194.93	-853.15	-7189.85	0.36	1393516.27	3179833.58	40.411806	-104.854184
	13500.00	90.33	270.19	6947.67	7383.92	-853.17	-7378.84	0.33	1393514.82	3179644.60	40.411806	-104.854482
	13693.00	90.41	270.07	6947.07	7476.91	-852.96	-7471.84	0.16	1393514.32	3179551.61	40.411807	-104.855196
	13789.00	90.28	269.83	6946.49	7572.91	-853.04	-7567.84	0.28	1393513.51	3179455.62	40.411806	-104.855541
	13882.00	90.04	269.16	6946.23	7665.91	-853.86	-7660.83	0.78	1393511.99	3179362.64	40.411804	-104.855875
	13976.00	90.37	270.21	6945.90	7759.90	-854.38	-7754.83	1.17	1393510.76	3179268.65	40.411802	-104.856213
	14069.00	90.64	270.01	6945.08	7852.90	-854.20	-7847.83	0.36	1393510.24	3179175.66	40.411803	-104.856547
	14163.00	90.13	269.13	6944.44	7946.89	-854.90	-7941.82	1.08</				

Comments	MD (ft)	Incl (°)	Azim True (°)	TVD (ft)	VSEC (ft)	NS (ft)	EW (ft)	DLS (°/100ft)	Northing (ftUS)	Easting (ftUS)	Latitude (°)	Longitude (°)
	17123.00	89.82	270.26	6944.13	10906.80	-866.40	-10901.71	0.15	1393474.90	3176122.08	40.411766	-104.867513
	17215.00	90.71	269.70	6943.70	10998.80	-866.44	-10993.71	1.14	1393474.17	3176030.09	40.411766	-104.867843
	17309.00	90.65	270.23	6942.59	11092.79	-866.49	-11087.70	0.57	1393473.40	3175936.10	40.411766	-104.868181
	17402.00	90.84	270.31	6941.38	11185.78	-866.05	-11180.70	0.22	1393473.14	3175843.11	40.411767	-104.868515
	17495.00	90.76	270.49	6940.08	11278.76	-865.41	-11273.68	0.21	1393473.08	3175750.13	40.411768	-104.868849
	17587.00	90.60	269.58	6938.99	11370.75	-865.35	-11365.68	1.00	1393472.44	3175658.14	40.411769	-104.869179
Last SLB_MWD Survey	17661.00	91.23	270.31	6937.81	11444.74	-865.42	-11439.67	1.30	1393471.81	3175584.16	40.411768	-104.869445
Projection to Bit	17684.00	91.23	270.31	6937.31	11467.73	-865.30	-11462.66	0.00	1393471.76	3175561.16	40.411769	-104.869527

Survey Type: Def Survey

Survey Error Model: ISCWSA Rev 0 *** 3-D 95.000% Confidence 2.7955 sigma
Survey Program:

Description	Part	MD From (ft)	MD To (ft)	EOU Freq (ft)	Hole Size	Casing Diameter (in)	Survey Tool Type	Borehole / Survey
	1	0.000	14.000	1/98.425	13.500	9.625	NAL_MWD_IFR1-Depth Only	Original Hole / Bost Farm 12N-11B-L IFR 0' to 17684' Definitive
	1	14.000	20.000	Act Stns	13.500	9.625	NAL_MWD_IFR1-Depth Only	Original Hole / Bost Farm 12N-11B-L IFR 0' to 17684' Definitive
	1	20.000	1815.000	Act Stns	13.500	9.625	NAL_MWD_IFR1	Original Hole / Bost Farm 12N-11B-L IFR 0' to 17684' Definitive
	1	1815.000	17684.000	Act Stns	8.500	5.500	NAL_MWD_IFR1+MS	Original Hole / Bost Farm 12N-11B-L IFR 0' to 17684' Definitive



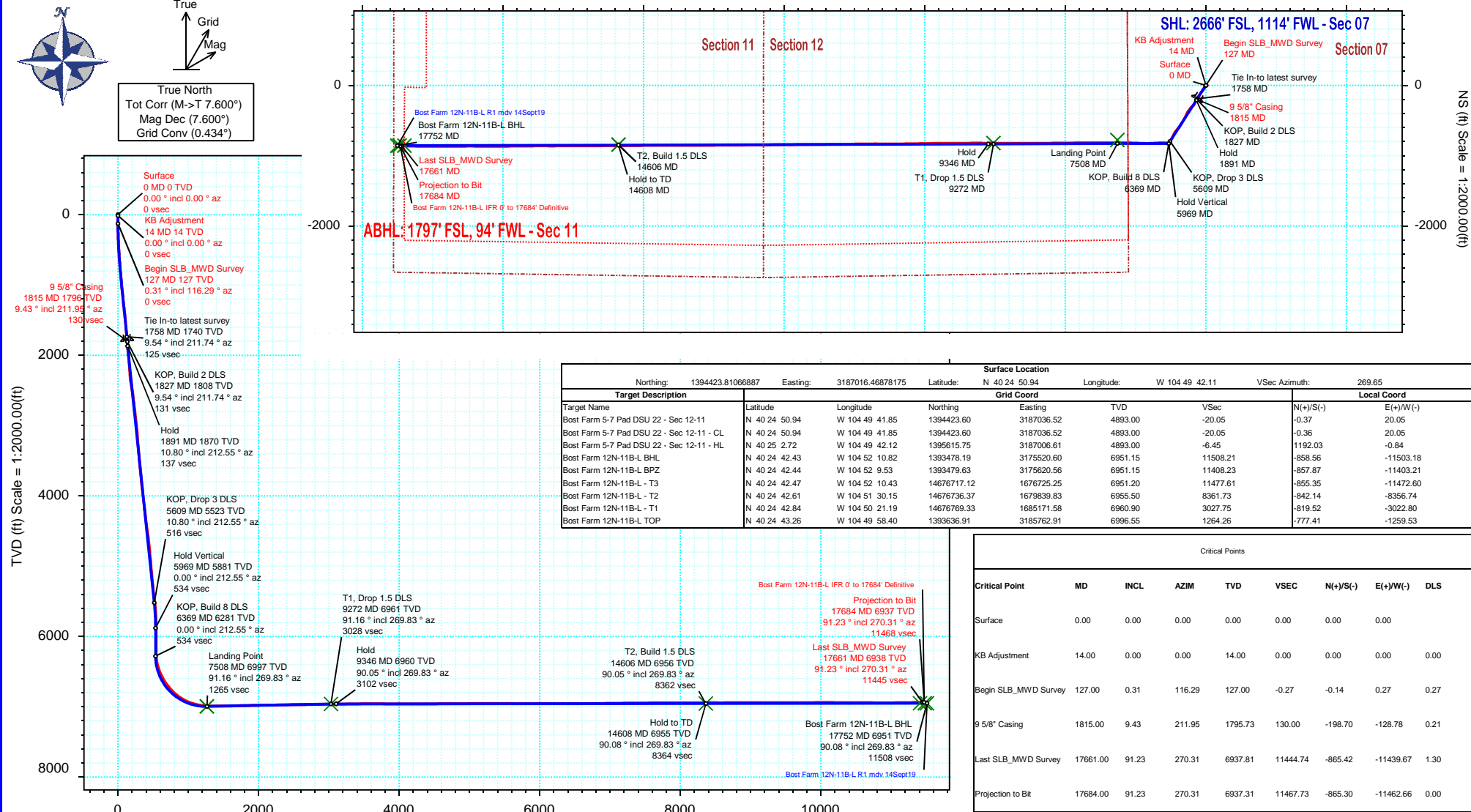
SRC Energy

Schlumberger

Borehole:	Well:	Field:	Structure:
Original Hole	Bost Farm 12N-11B-L	CO, Weld County (NAD 83 NZ) - SRC	SRC Energy 07-05N-66W (Bost Farm 5-7 Pad DSU 20)

Gravity & Magnetic Parameters				Surface Location				Miscellaneous			
Model:	Magvar IFR	Dip:	66.6°	Date:	15-Sep-2019	Lat:	N 40 24 50.94	Northing:	1394423.81ftUS	Grid Conv:	0.434°
MagDec:	7.6°	FS:	52214nT	Gravity FS:	999.024mgn (9.80665 Based)	Lon:	W 104 49 42.11	Easting:	3187016.47ftUS	Scale Fact:	0.9999609
								Slot:	Bost Farm 12N-11B-L	TVD Ref:	KB 20ft(4893ft above MSL)
								Plan:	Bost Farm 12N-11B-L IFR 0' to 17684' Definitive		

Final Pva



Vertical Section (ft) Azim = 269.65° Scale = 1:2000.00(ft) Origin = 0N/-S, 0E/-W