

Welcome to
productive drilling

Schlumberger

END OF WELL REPORT

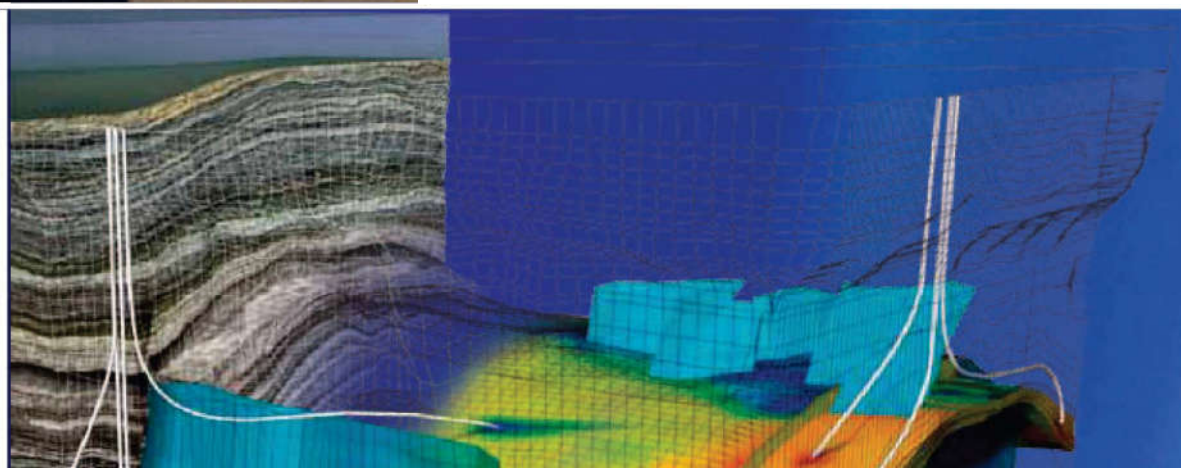
CLIENT - SRC Energy

RIG NAME - PD 462

WELL NAME - Bost Farm 12N-11C-L

COUNTY - Weld County, CO

DATE - Oct 3, 2019



Bost Farm 12N-11C-L IFR 0' to 17665' Definitive Survey Geodetic Report

(Def Survey)

Report Date: October 08, 2019 - 12:09 PM
Client: SRC Energy
Field: CO, Weld County (NAD 83 NZ) - SRC
Structure / Slot: SRC Energy 07-05N-66W (Bost Farm 5-7 Pad DSU 20) / Bost Farm 12N-11C-L
Well: Bost Farm 12N-11C-L
Borehole: Original Hole
UWI / API#: Unknown / 05-123-50251
Survey Name: Bost Farm 12N-11C-L IFR 0' to 17665' Definitive
Survey Date: May 29, 2019
Tort / AHD / DDI / ERD Ratio: 201.811 ° / 11716.505 ft / 6.773 / 1.665
Coordinate Reference System: NAD83 Colorado State Plane, Northern Zone, US Feet
Location Lat / Long: N 40° 24' 50.94360", W 104° 49' 42.37320"
Location Grid N/E Y/X: N 1394423.659 ftUS, E 3186996.421 ftUS
CRS Grid Convergence Angle: 0.4339 °
Grid Scale Factor: 0.9999609
Version / Patch: 2.10.782.0

Survey / DLS Computation: Minimum Curvature / Lubinski
Vertical Section Azimuth: 269.600 ° (True North)
Vertical Section Origin: 0.000 ft, 0.000 ft
TVD Reference Datum: KB 20ft
TVD Reference Elevation: 4893.000 ft above MSL
Seabed / Ground Elevation: 4873.000 ft above MSL
Magnetic Declination: 7.600 °
Total Gravity Field Strength: 999.0244mgn (9.80665 Based)
Gravity Model: GARM
Total Magnetic Field Strength: 52216.000 nT
Magnetic Dip Angle: 66.600 °
Declination Date: September 09, 2019
Magnetic Declination Model: Magvar IFR
North Reference: True North
Grid Convergence Used: 0.0000 °
Total Corr Mag North->True North: 7.6000 °
Local Coord Referenced To: Well Head

Comments	MD (ft)	Incl (°)	Azim True (°)	TVD (ft)	VSEC (ft)	NS (ft)	EW (ft)	DLS (°/100ft)	Northing (ftUS)	Easting (ftUS)	Latitude (°)	Longitude (°)
Surface	0.00	0.00	0.00	0.00	0.00	0.00	0.00	N/A	1394423.66	3186996.42	40.414151	-104.828437
KB Adjustment	14.00	0.00	0.00	14.00	0.00	0.00	0.00	0.00	1394423.66	3186996.42	40.414151	-104.828437
Begin												
SLB_MWD	127.00	0.44	37.06	127.00	-0.26	0.35	0.26	0.39	1394424.01	3186996.68	40.414152	-104.828436
Survey												
	215.00	0.40	289.96	215.00	-0.18	0.72	0.18	0.77	1394424.38	3186996.59	40.414153	-104.828436
	307.00	1.68	233.55	306.98	1.21	0.03	-1.21	1.63	1394423.68	3186995.21	40.414151	-104.828441
	397.00	3.14	230.73	396.90	4.20	-2.32	-4.18	1.63	1394421.31	3186992.26	40.414145	-104.828452
	487.00	4.73	222.93	486.69	8.66	-6.59	-8.62	1.86	1394417.00	3186987.86	40.414133	-104.828468
	577.00	6.23	222.89	576.27	14.56	-12.89	-14.47	1.67	1394410.66	3186982.05	40.414116	-104.828489
	667.00	7.95	217.16	665.58	21.70	-21.43	-21.55	2.06	1394402.07	3186975.03	40.414092	-104.828514
	757.00	9.28	218.75	754.56	30.08	-32.05	-29.85	1.50	1394391.39	3186966.81	40.414063	-104.828544
	847.00	9.63	218.09	843.34	39.34	-43.63	-39.04	0.41	1394379.74	3186957.71	40.414031	-104.828577
	937.00	9.90	220.69	932.04	49.11	-55.42	-48.73	0.57	1394367.87	3186948.12	40.413999	-104.828612
	1027.00	10.25	222.71	1020.65	59.67	-67.17	-59.20	0.55	1394356.04	3186937.73	40.413967	-104.828650
	1117.00	11.09	224.34	1109.09	71.24	-79.25	-70.68	0.99	1394343.88	3186926.34	40.413933	-104.828691
	1207.00	10.96	223.59	1197.43	83.27	-91.63	-82.63	0.22	1394331.41	3186914.49	40.413899	-104.828734
	1297.00	10.74	224.83	1285.82	95.17	-103.78	-94.44	0.36	1394319.17	3186902.77	40.413866	-104.828776
	1387.00	10.38	225.27	1374.30	106.92	-115.43	-106.12	0.41	1394307.43	3186891.19	40.413834	-104.828818
	1477.00	10.25	219.76	1462.85	117.88	-127.29	-117.00	1.11	1394295.49	3186880.40	40.413802	-104.828857
	1567.00	9.90	216.63	1551.46	127.71	-139.66	-126.74	0.72	1394283.05	3186870.75	40.413768	-104.828892
	1657.00	10.16	219.54	1640.08	137.46	-151.99	-136.40	0.63	1394270.65	3186861.18	40.413734	-104.828927
	1747.00	9.68	219.23	1728.74	147.38	-163.97	-146.24	0.54	1394258.59	3186851.43	40.413701	-104.828962
	1758.00	9.54	219.23	1739.58	148.56	-165.39	-147.41	1.27	1394257.16	3186850.28	40.413697	-104.828966
9 5/8" Casing	1819.00	9.57	220.01	1799.74	155.07	-173.19	-153.86	0.22	1394249.31	3186843.88	40.413676	-104.828990
	1869.00	9.60	220.65	1849.04	160.50	-179.54	-159.25	0.22	1394242.92	3186838.54	40.413658	-104.829009
	1962.00	10.74	217.67	1940.58	170.94	-192.28	-169.60	1.35	1394230.10	3186828.29	40.413623	-104.829046
	2055.00	10.37	217.12	2032.00	181.38	-205.82	-179.95	0.41	1394216.49	3186818.05	40.413586	-104.829083
	2148.00	10.15	222.79	2123.52	192.09	-218.51	-190.56	1.11	1394203.73	3186807.52	40.413551	-104.829121
	2241.00	10.28	220.11	2215.05	203.08	-230.87	-201.48	0.53	1394191.28	3186796.71	40.413517	-104.829161
	2335.00	10.45	227.31	2307.52	214.84	-243.06	-213.15	1.39	1394179.00	3186785.13	40.413484	-104.829202
	2428.00	10.13	232.83	2399.02	227.63	-253.72	-225.86	1.11	1394168.24	3186772.49	40.413455	-104.829248
	2521.00	10.22	229.78	2490.56	240.52	-263.99	-238.68	0.59	1394157.88	3186759.76	40.413426	-104.829294
	2614.00	10.48	229.50	2582.05	253.33	-274.81	-251.41	0.28	1394146.96	3186747.11	40.413397	-104.829340
	2709.00	10.12	233.99	2675.52	266.72	-285.33	-264.73	0.93	1394136.34	3186733.87	40.413368	-104.829388
	2801.00	10.17	232.11	2766.08	279.74	-295.07	-277.68	0.36	1394126.51	3186720.99	40.413341	-104.829434
	2893.00	10.34	231.77	2856.61	292.70	-305.17	-290.58	0.20	1394116.31	3186708.17	40.413313	-104.829480
	2986.00	10.37	230.94	2948.09	305.83	-315.61	-303.63	0.16	1394105.78	3186695.20	40.413285	-104.829527
	3079.00	10.33	232.05	3039.58	318.98	-326.01	-316.71	0.22	1394095.27	3186682.20	40.413256	-104.829574
	3172.00	10.07	232.21	3131.11	332.05	-336.12	-329.71	0.28	1394085.07	3186669.28	40.413228	-104.829621
	3266.00	10.23	232.30	3223.64	345.22	-346.26	-342.81	0.17	1394074.83	3186656.26	40.413201	-104.829668
	3358.00	10.19	232.75	3314.18	358.23	-356.18	-355.75	0.10	1394064.81	3186643.39	40.413173	-104.829715
	3452.00	10.11	232.94	3406.71	371.50	-366.19	-368.95	0.09	1394054.70	3186630.27	40.413146	-104.829762
	3545.00	10.15	231.17	3498.26	384.47	-376.24	-381.85	0.34	1394044.55	3186617.45	40.413118	-104.829808
	3637.00	10.14	231.63	3588.82	397.20	-386.35	-394.51	0.09	1394034.35	3186604.86	40.413090	-104.829854
	3731.00	10.46	231.16	3681.31	410.41	-396.84	-407.65	0.35	1394023.76	3186591.81	40.413062	-104.829901
	3823.00	10.41	231.16	3771.79	423.46	-407.29	-420.63	0.05	1394013.21	3186578.91	40.413033	-104.829947
	3916.00	10.20	229.39	3863.29	436.33	-417.92	-433.42	0.41	1394002.49	3186566.19	40.413004	-104.829993
	4009.00	10.19	229.41	3954.82	448.90	-428.63	-445.92	0.01	1393991.68	3186553.78	40.412974	-104.830038
	4102.00	10.43	231.19	4046.32	461.78	-439.26	-458.73	0.43	1393980.95	3186541.05	40.412945	-104.830084
	4195.00	10.24	229.29	4137.81	474.68	-449.93	-471.55	0.42	1393970.19	3186528.31	40.412916	-104.830130
	4288.00	10.34	230.72	4229.31	487.48	-460.60	-484.28	0.29	1393959.42	3186515.66	40.412887	-104.830176
	4381.00	10.29	230.95	4320.81	500.47	-471.12	-497.19	0.07	1393948.81	3186502.83	40.412858	-104.830222
	4474.00	10.23	228.49	4412.32	513.18	-481.83	-509.83	0.48	1393938.00	3186490.28	40.412828	-104.830268
	4567.00	10.36	228.29	4503.83	525.68	-492.86	-522.25	0.14	1393926.87	3186477.94	40.412798	-104.830312
	4659.00	10.44	228.23	4594.32	538.15	-503.92	-534.64	0.09	1393915.72	3186465.63	40.412768	-104.830357
	4753.00	10.30	227.75	4686.78	550.80	-515.24	-547.22	0.18	1393904.31	3186453.14	40.412737	-104.830402
	4845.00	10.14	230.11	4777.32	563.18	-525.97	-559.52	0.49	1393893.49	3186440.92	40.412707	-104.830446
	4938.00	10.30	229.21	4868.84	575.83	-536.65	-572.09	0.24	1393882.71	3186428.43	40.412678	-104.830491
	5031.00	10.34	227.83	4960.34	588.38	-547.69	-584.58	0.27	1393871.58	3186416.03	40.412648	-104.830536
	5126.00	10.32	227.19	5053.80	601.03	-559.19	-597.14	0.12	1393859.98	3186403.56	40.412616	-104.830581
	5219.00	10.58	227.61	5145.26	613.52	-570.61	-609.55	0.29	1393848.47	3186391.23	40.412585	-104.830626
	5313.00	6.91	224.95	5238.15	623.96	-580.43	-619.93	3.93	1393838.57	3186380.93	40.412558	-104.830663
	5408.00	3.10	224.17	5332.77	629.83	-586.32	-625.76	4.01	1393832.64	3186375.15	40.412542	-104.830684
	5503.00	0.24	323.94	5427.72	631.75	-588.00	-627.66	3.32	1393830.94	3186373.25	40.412537	-104.830691
	5596.00	0.19	4.02	5520.72	631.85	-587.69	-627.77	0.17	1393831.25	3186373.15	40.412538	-104.830691
	5690.00	0.18	25.78	5614.72	631.78	-587.40	-627.69	0.08	1393831.54	3186373.22	40.412539	-104.830691
	5782.00	0.09	215.09	5706.72	631.76	-587.33	-627.67	0.29	1393831.61	3186373.24	40.412539	-104.830691
	5876.00	0.16	287.53	5800.72	631.92	-587.35	-627.84	0.17	1393831.59	3186373.07	40.412539	-104.830692
	5968.00	0.17	9.58	5892.72	632.02	-587.18	-627.94	0.24	1393831.76	3186372.97	40.412539	-104.830692
	6060.00	0.19	297.89	5984.72	632.13	-586.97	-628.05	0.23	1393831.97	3186372.86	40.412540	-104.830692
	6154.00	0.20	344.00	6078.72	632.31	-586.74	-628.23	0.16	1393832.20	3186372.68	40.412540	-104.830693
	6248.00	0.08	278.84	6172.72	632.42	-586.58	-628.34	0.19	1393832.37	3186372.56	40.412541	-104.830693
	6344.00	0.25	345.62	6268.72	632.54	-586.36	-628.46	0.24	1393832.58	3186372.44	40.412541	-104.830694
	6441.00	1.01	280.32	6365.72	633.43	-586.00	-629.35	0.96	1393832.93	3186371.55	40.412542	-104.830697
	6534.00	9.98	279.91	6458.19	642.18	-584.47	-638.12	9.65	1393834.40	3186362.77		

Comments	MD (ft)	Incl (°)	Azim True (°)	TVD (ft)	VSEC (ft)	NS (ft)	EW (ft)	DLS (°/100ft)	Northing (ftUS)	Easting (ftUS)	Latitude (°)	Longitude (°)
	6813.00	31.37	267.93	6718.62	736.80	-579.44	-732.78	8.07	1393838.71	3186268.08	40.412560	-104.831068
	6906.00	39.33	266.95	6794.41	790.53	-581.89	-786.48	8.58	1393835.86	3186214.40	40.412554	-104.831261
	6998.00	48.45	268.48	6860.65	854.20	-584.36	-850.15	9.98	1393832.91	3186150.76	40.412547	-104.831490
	7093.00	56.78	266.77	6918.28	929.57	-587.54	-925.49	8.88	1393829.15	3186075.44	40.412538	-104.831760
	7185.00	65.19	267.59	6962.87	1009.88	-591.47	-1005.78	9.17	1393824.61	3185995.19	40.412527	-104.832049
	7279.00	73.80	267.79	6995.76	1097.79	-595.02	-1093.67	9.16	1393820.40	3185907.37	40.412518	-104.832364
	7372.00	81.93	270.42	7015.30	1188.63	-596.40	-1184.49	9.17	1393818.33	3185816.53	40.412514	-104.832691
	7465.00	88.51	269.96	7023.04	1281.25	-596.10	-1277.12	7.09	1393817.93	3185723.91	40.412515	-104.833023
	7557.00	89.32	269.63	7024.79	1373.23	-596.43	-1369.10	0.95	1393816.91	3185631.93	40.412514	-104.833353
	7650.00	89.22	270.36	7025.97	1466.22	-596.43	-1462.09	0.79	1393816.19	3185538.95	40.412514	-104.833687
	7742.00	89.31	270.27	7027.15	1558.20	-595.93	-1554.08	0.14	1393816.00	3185446.96	40.412515	-104.834018
	7834.00	89.28	270.46	7028.28	1650.19	-595.34	-1646.07	0.21	1393815.89	3185354.97	40.412517	-104.834348
	7927.00	88.96	270.57	7029.71	1743.17	-594.51	-1739.06	0.36	1393816.02	3185261.99	40.412519	-104.834682
	8020.00	88.64	269.67	7031.66	1836.14	-594.31	-1832.04	1.03	1393815.51	3185169.01	40.412519	-104.835016
	8113.00	88.94	269.83	7033.62	1929.12	-594.72	-1925.01	0.37	1393814.40	3185076.04	40.412518	-104.835350
	8206.00	89.12	269.71	7035.20	2022.11	-595.09	-2018.00	0.23	1393813.33	3184983.07	40.412517	-104.835684
	8298.00	89.05	270.13	7036.67	2114.09	-595.22	-2109.99	0.46	1393812.50	3184891.09	40.412517	-104.836014
	8391.00	90.06	269.89	7037.39	2207.09	-595.20	-2202.98	1.12	1393811.81	3184798.10	40.412517	-104.836348
	8485.00	90.23	270.37	7037.15	2301.08	-594.99	-2296.98	0.54	1393811.32	3184704.10	40.412518	-104.836686
	8578.00	89.98	269.98	7036.98	2394.08	-594.71	-2389.98	0.50	1393810.90	3184611.11	40.412518	-104.837020
	8670.00	89.95	270.44	7037.04	2486.07	-594.37	-2481.98	0.50	1393810.54	3184519.11	40.412519	-104.837350
	8765.00	89.80	270.77	7037.24	2581.06	-583.37	-2576.98	0.38	1393810.82	3184424.12	40.412522	-104.837691
	8857.00	90.24	270.34	7037.21	2673.04	-582.47	-2668.97	0.67	1393811.01	3184332.12	40.412524	-104.838021
	8949.00	90.07	270.10	7036.96	2765.04	-592.12	-2760.97	0.32	1393810.67	3184240.13	40.412525	-104.838352
	9042.00	89.89	270.76	7037.00	2858.03	-591.42	-2853.97	0.74	1393810.66	3184147.13	40.412527	-104.838686
	9135.00	89.80	270.63	7037.25	2951.01	-590.30	-2946.96	0.17	1393811.09	3184054.14	40.412530	-104.839020
	9228.00	89.83	269.19	7037.55	3044.00	-590.44	-3039.96	1.55	1393810.24	3183961.15	40.412530	-104.839354
	9320.00	89.96	269.67	7037.72	3136.00	-591.36	-3131.95	0.54	1393808.63	3183869.17	40.412527	-104.839684
	9413.00	89.91	269.90	7037.82	3229.00	-591.71	-3224.95	0.25	1393807.57	3183776.18	40.412526	-104.840018
	9506.00	90.36	271.26	7037.60	3321.99	-590.76	-3317.94	1.54	1393807.81	3183683.18	40.412529	-104.840352
	9599.00	90.10	270.78	7037.23	3414.96	-589.11	-3410.93	0.59	1393808.76	3183590.19	40.412533	-104.840686
	9692.00	90.00	270.43	7037.15	3507.94	-588.13	-3503.92	0.39	1393809.04	3183497.20	40.412536	-104.841020
	9786.00	90.06	270.15	7037.10	3601.94	-587.65	-3597.92	0.30	1393808.80	3183403.20	40.412537	-104.841357
	9878.00	89.95	270.52	7037.09	3693.93	-587.11	-3689.92	0.42	1393808.64	3183311.21	40.412539	-104.841688
	9971.00	89.78	268.63	7037.31	3786.92	-587.80	-3782.91	2.04	1393807.25	3183218.22	40.412537	-104.842022
	10063.00	90.09	269.93	7037.41	3878.92	-588.96	-3874.90	1.45	1393805.40	3183126.25	40.412534	-104.842352
	10156.00	90.30	270.02	7037.10	3971.92	-589.00	-3967.90	0.25	1393804.65	3183033.26	40.412533	-104.842686
	10248.00	89.88	268.88	7036.95	4063.92	-588.88	-4059.90	1.32	1393803.07	3182941.28	40.412531	-104.843016
	10340.00	90.09	269.66	7036.98	4155.91	-591.05	-4151.89	0.88	1393801.20	3182849.30	40.412528	-104.843347
	10434.00	89.73	269.18	7037.12	4249.91	-592.01	-4245.88	0.64	1393799.54	3182755.32	40.412525	-104.843684
	10527.00	90.15	270.04	7037.22	4342.91	-592.64	-4338.88	1.03	1393798.20	3182662.33	40.412523	-104.844018
	10620.00	89.93	268.82	7037.16	4435.91	-593.56	-4431.87	1.33	1393796.57	3182569.35	40.412521	-104.844352
	10713.00	90.02	269.75	7037.20	4528.91	-594.72	-4524.86	1.00	1393794.71	3182476.38	40.412517	-104.844686
	10807.00	90.31	270.15	7036.93	4622.90	-594.81	-4618.86	0.53	1393793.92	3182382.38	40.412517	-104.845024
	10900.00	91.24	270.25	7035.67	4715.89	-594.48	-4711.85	1.01	1393793.54	3182289.40	40.412518	-104.845357
	10993.00	90.98	269.36	7033.90	4808.87	-594.80	-4804.84	1.01	1393792.51	3182196.43	40.412517	-104.845691
	11085.00	91.23	269.70	7032.16	4900.85	-595.55	-4896.82	0.49	1393791.06	3182104.46	40.412515	-104.846022
	11177.00	90.68	268.67	7030.62	4992.84	-596.86	-4988.79	1.27	1393789.06	3182012.50	40.412511	-104.846352
	11270.00	90.11	269.29	7029.98	5085.83	-598.52	-5081.77	0.91	1393786.70	3181919.53	40.412507	-104.846686
	11363.00	90.16	270.01	7029.76	5178.83	-599.09	-5174.77	0.78	1393785.43	3181826.55	40.412505	-104.847020
	11455.00	89.78	268.92	7029.81	5270.83	-599.94	-5266.77	1.25	1393783.87	3181734.57	40.412503	-104.847350
	11547.00	89.63	269.10	7030.29	5362.82	-601.53	-5358.75	0.25	1393781.59	3181642.60	40.412498	-104.847681
	11640.00	90.17	269.25	7030.45	5455.82	-602.87	-5451.74	0.60	1393779.54	3181549.63	40.412495	-104.848014
	11732.00	90.10	270.22	7030.23	5547.81	-603.30	-5543.74	1.06	1393777.42	3181457.64	40.412493	-104.848345
	11826.00	89.94	269.92	7030.20	5641.81	-603.18	-5637.74	0.36	1393777.82	3181363.64	40.412494	-104.848686
	11919.00	89.64	268.76	7030.54	5734.81	-604.25	-5730.73	1.29	1393776.05	3181270.67	40.412491	-104.849016
	12012.00	90.86	269.96	7030.13	5827.80	-605.29	-5823.72	1.84	1393774.30	3181177.69	40.412488	-104.849350
	12107.00	90.93	269.55	7028.65	5922.79	-605.70	-5918.71	0.44	1393773.18	3181082.71	40.412486	-104.849691
	12201.00	90.79	268.90	7027.24	6016.78	-606.97	-6012.69	0.71	1393771.20	3180988.75	40.412483	-104.850029
	12293.00	90.65	269.46	7026.08	6108.77	-608.29	-6104.67	0.63	1393769.18	3180896.78	40.412479	-104.850359
	12385.00	90.24	269.65	7025.37	6200.76	-609.00	-6196.66	0.49	1393767.77	3180804.80	40.412477	-104.850689
	12479.00	89.81	269.46	7025.33	6294.76	-609.73	-6290.66	0.50	1393766.33	3180710.82	40.412475	-104.851027
	12572.00	89.96	270.02	7025.51	6387.76	-610.15	-6383.66	0.62	1393765.20	3180617.83	40.412474	-104.851361
	12665.00	89.78	270.04	7025.73	6480.76	-610.11	-6476.66	0.19	1393764.55	3180524.83	40.412474	-104.851695
	12758.00	89.72	269.16	7026.13	6573.76	-610.75	-6569.66	0.95	1393763.20	3180431.85	40.412472	-104.852029
	12851.00	89.88	269.46	7026.46	6666.76	-611.87	-6662.65	0.37	1393761.37	3180338.87	40.412469	-104.852363
	12943.00	89.46	268.82	7026.99	6758.75	-613.26	-6754.63	0.83	1393759.29	3180246.90	40.412465	-104.852693
	13036.00	89.77	268.57	7027.61	6851.74	-615.37	-6847.61	0.43	1393756.47	3180153.95	40.412459	-104.853027
	13128.00	89.94	269.40	7027.84	6943.73	-617.00	-6939.59	0.92	1393754.15	3180061.98	40.412455	-104.853357
	13222.00	89.83	269.40	7028.03	7037.73	-617.99	-7033.59	0.12	1393752.45	3179968.00	40.412452	-104.853695
	13316.00	90.02	269.74	7028.16	7131.73	-618.69	-7127.58	0.41	1393751.03	3179874.02	40.412450	-104.854032
	13411.00	89.84	269.44	7028.27	7226.73	-619.37	-7222.58	0.37	1393749.63	3179779.03	40.412448	-104.854374
	13506.00	89.78	269.03	7028.59	7321.73	-620.64	-7317.57	0.44	1393747.65	3179684.06	40.412444	-104.854715
	13600.00	89.83	268.61	7028.91	7415.72	-622.58	-7411.55	0.45	1393745.00	3179590.10	40.412439	-104.855052
	13693.00	90.12	270.32	7028.95	7508.71	-623.45	-7504.54	1.86	1393743.43	3179497.12	40.412437	-104.855386
	13788.00	90.18	270.34	7028.70	7603.71	-622.90	-7599.54	0.07	1393743.25	3179402.13	40.412438	-104.855727
	13882.00	89.89	269.99	7028.64	7697.70	-622.63	-7693.54	0.48	1393742.81	3179308.13	40.412439	-104.856065
	13976.00	89.64	268.88	7029.03	7791.70	-623.55	-7787.54	1.2				

Comments	MD (ft)	Incl (°)	Azim True (°)	TVD (ft)	VSEC (ft)	NS (ft)	EW (ft)	DLS (°/100ft)	Northing (ftUS)	Easting (ftUS)	Latitude (°)	Longitude (°)
	16938.00	90.27	270.09	7029.09	10753.58	-632.53	-10749.43	0.13	1393709.77	3176252.54	40.412408	-104.867039
	17031.00	89.87	268.60	7028.98	10846.58	-633.59	-10842.42	1.66	1393708.00	3176159.56	40.412405	-104.867373
	17123.00	89.91	269.30	7029.16	10938.57	-635.28	-10934.40	0.76	1393705.62	3176067.59	40.412401	-104.867703
	17215.00	90.21	269.29	7029.06	11030.57	-636.41	-11026.39	0.33	1393703.79	3175975.62	40.412397	-104.868033
	17309.00	90.16	270.38	7028.76	11124.57	-636.68	-11120.39	1.16	1393702.81	3175881.63	40.412397	-104.868371
	17402.00	89.94	269.77	7028.68	11217.56	-636.56	-11213.39	0.70	1393702.23	3175788.63	40.412397	-104.868705
	17495.00	90.05	269.50	7028.68	11310.56	-637.15	-11306.39	0.31	1393700.93	3175695.65	40.412395	-104.869039
	17587.00	90.06	269.03	7028.59	11402.56	-638.33	-11398.38	0.51	1393699.06	3175603.67	40.412392	-104.869369
Last SLB_MWD Survey	17642.00	90.57	270.48	7028.29	11457.56	-638.56	-11453.38	2.79	1393698.40	3175548.68	40.412391	-104.869567
Projection to Bit	17665.00	90.57	270.48	7028.06	11480.55	-638.37	-11476.38	0.00	1393698.42	3175525.68	40.412391	-104.869649

Survey Type: Def Survey

Survey Error Model: ISCWSA Rev 0 *** 3-D 95.000% Confidence 2.7955 sigma
Survey Program:

Description	Part	MD From (ft)	MD To (ft)	EOU Freq (ft)	Hole Size	Casing Diameter (in)	Survey Tool Type	Borehole / Survey
	1	0.000	14.000	1/98.425	13.500	9.625	NAL_MWD_IFR1-Depth Only	Original Hole / Bost Farm 12N-11C-L IFR 0' to 17665' Definitive
	1	14.000	20.000	Act Stns	13.500	9.625	NAL_MWD_IFR1-Depth Only	Original Hole / Bost Farm 12N-11C-L IFR 0' to 17665' Definitive
	1	20.000	1819.000	Act Stns	13.500	9.625	NAL_MWD_IFR1	Original Hole / Bost Farm 12N-11C-L IFR 0' to 17665' Definitive
	1	1819.000	17665.000	Act Stns	8.500	5.500	NAL_MWD_IFR1+MS	Original Hole / Bost Farm 12N-11C-L IFR 0' to 17665' Definitive



SRC Energy

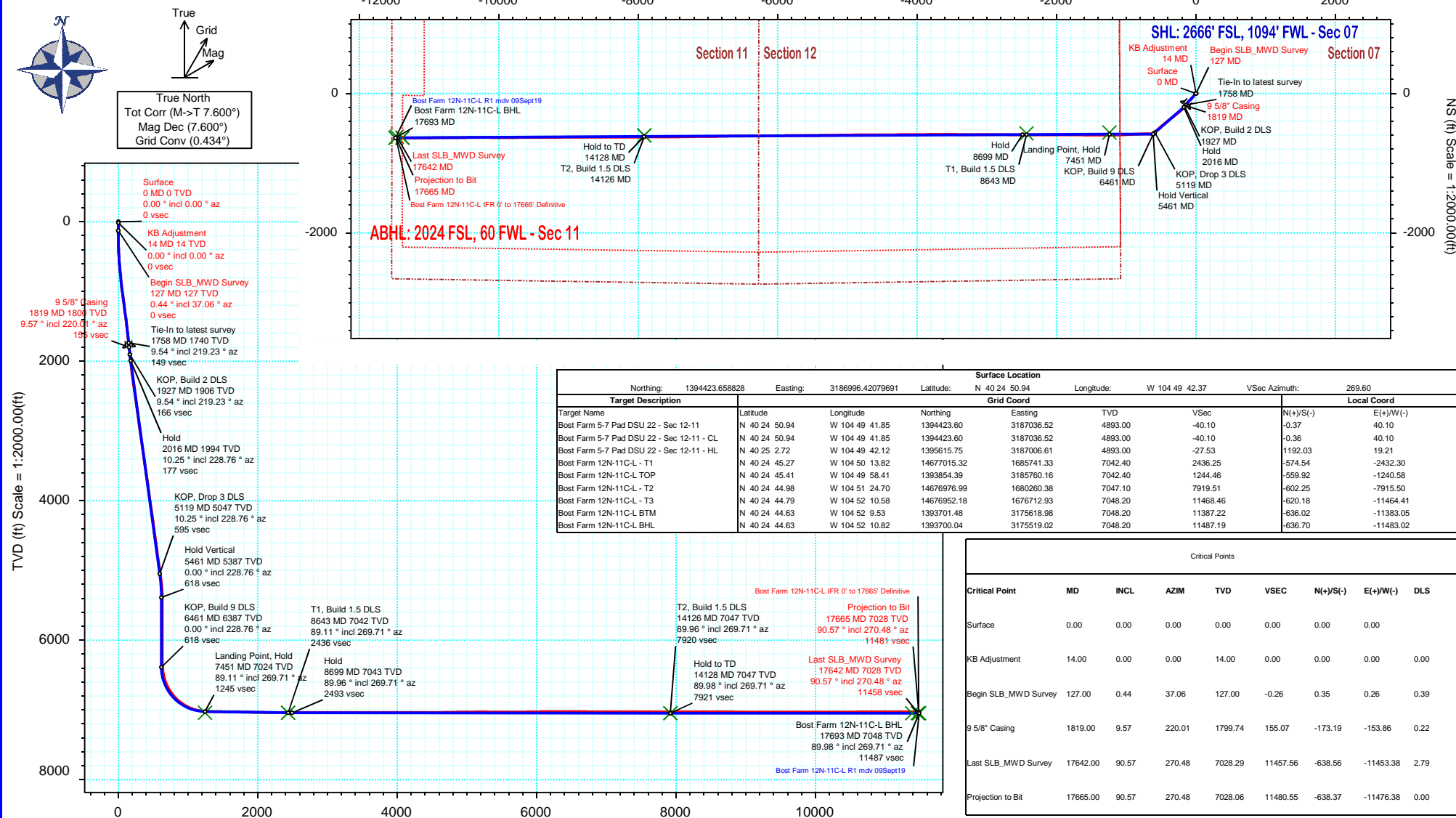
Rev 1

Schlumberger

Borehole:	Well:	Field:	Structure:
Original Hole	Bost Farm 12N-11C-L	CO, Weld County (NAD 83 NZ) - SRC	SRC Energy 07-05N-66W (Bost Farm 5-7 Pad DSU 20)

Gravity & Magnetic Parameters				Surface Location				Miscellaneous			
Model:	Magvar IFR	Dip:	66.6°	Date:	09-Sep-2019	Lat:	N 40 24 50.94	Northings:	1394423.66ftUS	Grid Conv:	0.4339°
MagDec:	7.6°	FS:	52216nT	Gravity FS:	999.024mgn (9.80665 Based)	Lon:	W 104 49 42.37	Easting:	3186996.42ftUS	Scale Fact:	0.9999609
								Slot: Bost Farm 12N-11C-L			
								TVD Ref: KB 20ft(4893ft above MSL)			
								Plan: Bost Farm 12N-11C-L IFR 0' to 17665' Definitive			

Final PVA



Critical Points							
Critical Point	MD	INCL	AZIM	TVD	VSEC	N(+)/S(-)	E(+)/W(-)
Surface	0.00	0.00	0.00	0.00	0.00	0.00	0.00
KB Adjustment	14.00	0.00	0.00	14.00	0.00	0.00	0.00
Begin SLB_MWD Survey	127.00	0.44	37.06	127.00	-0.26	0.35	0.26
9 5/8" Casing	1819.00	9.57	220.01	1799.74	155.07	-173.19	-153.86
Last SLB_MWD Survey	17642.00	90.57	270.48	7028.29	11457.56	-638.56	-11453.38
Projection to Bit	17665.00	90.57	270.48	7028.06	11480.55	-638.37	-11476.38