

SR
Welcome to
productive drilling

Schlumberger

END OF WELL REPORT

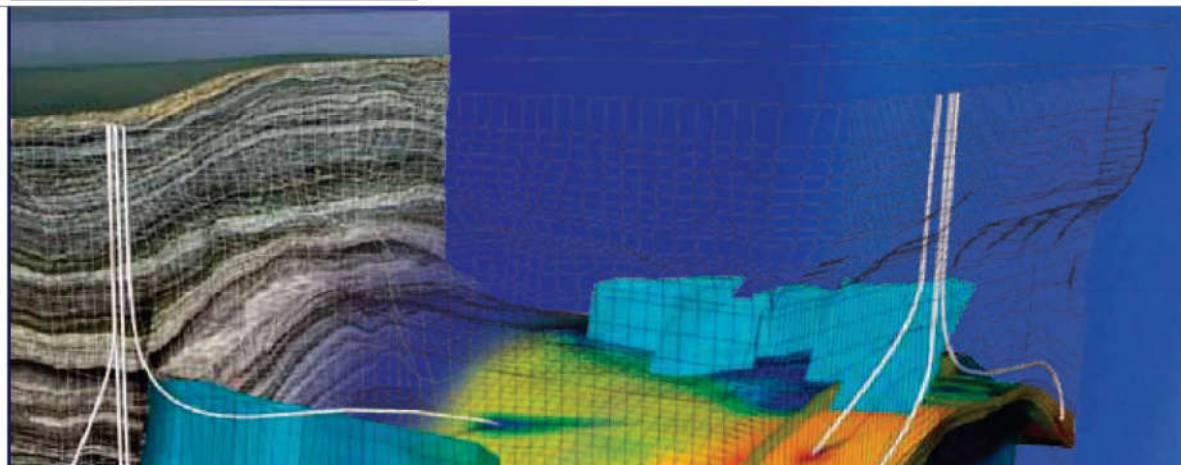
CLIENT - SRC Energy

RIG NAME - PD 462

WELL NAME - Bost Farm 32N-11B-L

COUNTY - Weld County, CO

DATE - Oct 3, 2019



Bost Farm 32N-11B-L IFR 0' to 17688' Definitive Survey Geodetic Report

(Def Survey)

Report Date: October 07, 2019 - 12:02 PM
Client: SRC Energy
Field: CO, Weld County (NAD 83 NZ) - SRC
Structure / Slot: SRC Energy 07-05N-66W (Bost Farm 5-7 Pad DSU 20) / Bost Farm 32N-11B-L
Well: Bost Farm 32N-11B-L
Borehole: Original Hole
UWI / API#: Unknown / 05-123-50258
Survey Name: Bost Farm 32N-11B-L IFR 0' to 17688' Definitive
Survey Date: May 29, 2019
Tort / AHD / DDI / ERD Ratio: 196.589 ° / 11444.080 ft / 6.755 / 1.639
Coordinate Reference System: NAD83 Colorado State Plane, Northern Zone, US Feet
Location Lat / Long: N 40° 24' 50.94720", W 104° 49' 42.88900"
Location Grid N/E Y/X: N 1394423.722 ftUS, E 3186956.601 ftUS
CRS Grid Convergence Angle: 0.4338 °
Grid Scale Factor: 0.9999609
Version / Patch: 2.10.782.0

Survey / DLS Computation: Minimum Curvature / Lubinski
Vertical Section Azimuth: 269.550 ° (True North)
Vertical Section Origin: 0.000 ft, 0.000 ft
TVD Reference Datum: KB 20ft
TVD Reference Elevation: 4893.000 ft above MSL
Seabed / Ground Elevation: 4873.000 ft above MSL
Magnetic Declination: 7.600 °
Total Gravity Field Strength: 999.0244mgn (9.80665 Based)
Gravity Model: GARM
Total Magnetic Field Strength: 52221.000 nT
Magnetic Dip Angle: 66.600 °
Declination Date: August 27, 2019
Magnetic Declination Model: Magvar IFR
North Reference: True North
Grid Convergence Used: 0.0000 °
Total Corr Mag North-True North: 7.6000 °
Local Coord Referenced To: Well Head

Comments	MD (ft)	Incl (°)	Azim True (°)	TVD (ft)	VSEC (ft)	NS (ft)	EW (ft)	DLS (°/100ft)	Northing (ftUS)	Easting (ftUS)	Latitude (°)	Longitude (°)
Surface	0.00	0.00	0.00	0.00	0.00	0.00	0.00	N/A	1394423.72	3186956.60	40.414152	-104.828580
KB Adjustment	14.00	0.00	0.00	14.00	0.00	0.00	0.00	0.00	1394423.72	3186956.60	40.414152	-104.828580
Begin												
SLB_MWD	127.00	0.49	47.52	127.00	-0.36	0.33	0.36	0.43	1394424.05	3186956.95	40.414153	-104.828579
Survey												
	215.00	0.80	333.51	214.99	-0.37	1.13	0.36	0.93	1394424.85	3186956.95	40.414155	-104.828579
	307.00	1.46	293.63	306.98	0.98	2.17	-1.00	1.08	1394425.89	3186955.58	40.414158	-104.828584
	397.00	1.59	287.64	396.95	3.22	3.01	-3.24	0.23	1394426.71	3186953.34	40.414160	-104.828592
	487.00	1.77	273.67	486.91	5.79	3.48	-5.82	0.50	1394427.16	3186950.76	40.414162	-104.828601
	577.00	1.81	257.14	576.86	8.56	3.25	-8.59	0.57	1394426.91	3186947.99	40.414161	-104.828611
	667.00	1.68	255.38	666.82	11.23	2.60	-11.25	0.16	1394426.24	3186945.33	40.414159	-104.828620
	757.00	0.57	232.86	756.80	12.87	2.00	-12.89	1.30	1394425.62	3186943.70	40.414157	-104.828626
	847.00	0.18	172.62	846.80	13.21	1.59	-13.22	0.56	1394425.21	3186943.36	40.414156	-104.828627
	937.00	0.27	211.89	936.80	13.31	1.27	-13.32	0.19	1394424.89	3186943.27	40.414155	-104.828628
	1027.00	0.35	182.36	1026.80	13.44	0.81	-13.44	0.20	1394424.43	3186943.15	40.414154	-104.828628
	1117.00	0.13	241.28	1116.80	13.54	0.49	-13.54	0.34	1394424.11	3186943.05	40.414153	-104.828629
	1207.00	0.31	241.54	1206.80	13.84	0.33	-13.85	0.20	1394423.94	3186942.75	40.414153	-104.828630
	1297.00	0.31	261.90	1296.80	14.30	0.18	-14.30	0.12	1394423.79	3186942.30	40.414152	-104.828631
	1387.00	0.18	271.51	1386.80	14.68	0.15	-14.68	0.15	1394423.76	3186941.92	40.414152	-104.828633
	1477.00	0.31	284.20	1476.80	15.06	0.21	-15.06	0.16	1394423.82	3186941.54	40.414153	-104.828634
	1567.00	0.18	301.52	1566.79	15.41	0.34	-15.42	0.16	1394423.95	3186941.18	40.414153	-104.828635
	1657.00	0.31	287.07	1656.79	15.77	0.49	-15.77	0.16	1394424.09	3186940.83	40.414153	-104.828637
	1715.00	0.27	294.34	1714.79	16.04	0.59	-16.05	0.09	1394424.19	3186940.55	40.414154	-104.828638
9 5/8" Casing	1776.00	0.46	267.56	1775.79	16.41	0.64	-16.42	0.41	1394424.24	3186940.18	40.414154	-104.828639
	1869.00	0.81	254.32	1868.79	17.42	0.45	-17.42	0.41	1394424.03	3186939.17	40.414153	-104.828643
	1963.00	0.11	341.57	1962.78	18.09	0.35	-18.09	0.86	1394423.94	3186938.51	40.414153	-104.828645
	2055.00	0.16	206.43	2054.78	18.17	0.32	-18.18	0.27	1394423.90	3186938.42	40.414153	-104.828645
	2147.00	0.04	26.70	2146.78	18.22	0.23	-18.22	0.22	1394423.82	3186938.38	40.414153	-104.828645
	2241.00	0.07	230.22	2240.78	18.25	0.23	-18.25	0.11	1394423.81	3186938.35	40.414153	-104.828646
	2336.00	0.11	166.66	2335.78	18.27	0.10	-18.27	0.11	1394423.68	3186938.33	40.414152	-104.828646
	2428.00	0.11	204.99	2427.78	18.29	-0.07	-18.29	0.08	1394423.52	3186938.31	40.414152	-104.828646
	2521.00	0.05	66.99	2520.78	18.29	-0.13	-18.29	0.16	1394423.45	3186938.31	40.414152	-104.828646
	2614.00	0.19	241.29	2613.78	18.39	-0.19	-18.39	0.26	1394423.39	3186938.21	40.414151	-104.828646
	2708.00	0.14	108.78	2707.78	18.42	-0.30	-18.42	0.32	1394423.28	3186938.19	40.414151	-104.828646
	2800.00	0.09	341.37	2799.78	18.33	-0.27	-18.33	0.23	1394423.31	3186938.27	40.414151	-104.828646
	2893.00	0.07	110.86	2892.78	18.30	-0.22	-18.30	0.16	1394423.36	3186938.30	40.414151	-104.828646
	2986.00	0.07	157.30	2985.78	18.23	-0.29	-18.23	0.06	1394423.29	3186938.38	40.414151	-104.828645
	3079.00	0.17	268.91	3078.78	18.35	-0.35	-18.34	0.22	1394423.24	3186938.26	40.414151	-104.828646
	3172.00	0.03	245.74	3171.78	18.51	-0.36	-18.50	0.15	1394423.22	3186938.10	40.414151	-104.828646
	3265.00	0.09	183.68	3264.78	18.53	-0.44	-18.53	0.09	1394423.14	3186938.07	40.414151	-104.828647
	3358.00	0.09	304.40	3357.78	18.60	-0.47	-18.60	0.17	1394423.11	3186938.01	40.414151	-104.828647
	3451.00	0.16	229.72	3450.78	18.76	-0.52	-18.76	0.17	1394423.06	3186937.85	40.414151	-104.828647
	3544.00	0.58	300.77	3543.78	19.26	-0.36	-19.26	0.59	1394423.22	3186937.35	40.414151	-104.828649
	3637.00	4.87	277.68	3636.65	23.57	0.41	-23.58	4.67	1394423.95	3186933.02	40.414153	-104.828665
	3730.00	6.23	273.72	3729.22	32.52	1.26	-32.53	1.52	1394424.74	3186924.07	40.414155	-104.828697
	3823.00	6.12	261.72	3821.68	42.46	0.88	-42.47	1.39	1394424.28	3186914.13	40.414154	-104.828733
	3916.00	8.02	252.10	3913.97	53.56	-1.83	-53.55	2.40	1394421.49	3186903.07	40.414147	-104.828772
	4009.00	10.07	254.04	4005.81	67.59	-6.06	-67.54	2.23	1394417.15	3186889.11	40.414135	-104.828823
	4102.00	9.97	252.06	4097.39	83.10	-10.78	-83.02	0.39	1394412.32	3186873.67	40.414122	-104.828878
	4195.00	10.52	252.28	4188.91	98.89	-15.84	-98.76	0.59	1394407.13	3186857.96	40.414109	-104.828935
	4288.00	10.42	248.00	4280.36	114.81	-21.58	-114.65	0.84	1394401.28	3186842.12	40.414093	-104.828992
	4381.00	10.34	252.10	4371.84	130.60	-27.29	-130.39	0.80	1394395.45	3186826.43	40.414077	-104.829048
	4474.00	10.40	260.90	4463.33	146.86	-31.18	-146.62	1.70	1394391.43	3186810.23	40.414066	-104.829107
	4566.00	10.04	259.16	4553.87	162.96	-34.01	-162.70	0.52	1394388.49	3186794.17	40.414059	-104.829164
	4659.00	10.03	255.99	4645.45	178.81	-37.49	-178.52	0.59	1394384.88	3186778.38	40.414049	-104.829221
	4752.00	9.84	254.87	4737.05	194.37	-41.53	-194.05	0.29	1394380.73	3186762.88	40.414038	-104.829277
	4844.00	9.88	256.36	4827.69	209.66	-45.44	-209.30	0.28	1394376.70	3186747.65	40.414027	-104.829332
	4937.00	8.96	253.79	4919.44	224.39	-49.34	-224.01	1.09	1394372.69	3186732.98	40.414017	-104.829384
	5031.00	10.03	263.75	5012.16	239.58	-52.28	-239.18	2.08	1394369.64	3186717.83	40.414009	-104.829439
	5125.00	9.97	257.46	5104.73	255.68	-54.94	-255.26	1.16	1394366.86	3186701.77	40.414001	-104.829497
	5218.00	9.94	256.22	5196.33	271.37	-58.59	-270.92	0.23	1394363.08	3186686.15	40.413991	-104.829553
	5313.00	10.31	259.52	5289.85	287.72	-62.09	-287.24	0.72	1394359.46	3186669.85	40.413982	-104.829612
	5408.00	9.85	256.02	5383.39	303.99	-65.60	-303.48	0.81	1394355.82	3186653.64	40.413972	-104.829670
	5503.00	10.09	255.32	5476.95	319.96	-69.68	-319.42	0.28	1394351.63	3186637.73	40.413961	-104.829727
	5596.00	9.78	256.88	5568.56	335.56	-73.53	-334.99	0.44	1394347.66	3186622.92	40.413950	-104.829783
	5689.00	9.77	257.10	5660.21	350.97	-77.09	-350.38	0.04	1394343.99	3186606.83	40.413940	-104.829838
	5781.00	10.23	259.89	5750.81	366.65	-80.26	-366.03	0.73	1394340.69	3186591.21	40.413932	-104.829894
	5875.00	10.11	256.06	5843.33	382.90	-83.72	-382.25	0.73	1394337.12	3186575.01	40.413922	-104.829953
	5967.00	10.09	256.86	5933.91	398.61	-87.49	-397.94	0.15	1394333.22	3186559.35	40.413912	-104.830009
	6059.00	10.24	258.16	6024.46	414.49	-91.00	-413.79	0.30	1394329.59	3186543.53	40.413902	-104.830066
	6153.00	10.04	257.28	6117.00	430.69	-94.52	-429.96	0.27	1394325.95	3186527.39	40.413893	-104.830124
	6248.00	10.16	257.49	6210.52	446.97	-98.16	-446.22	0.13	1394322.19	3186511.16	40.413883	-104.830182
	6345.00	10.08	257.34	6306.01	463.64	-101.87	-462.85	0.09	1394318.35	3186494.55	40.413872	-104.830242
	6440.00	11.14	261.16	6399.39	480.84	-105.11	-480.03	1.34	1394314.99	3186477.40	40.413863	-104.830304
	6533.00	19.23	254.60	6489.07	504.57	-110.56	-503.72	8.88	1394309.35	3186453.76	40.413848	-104.830389
	6625.00	26.22	260.73	6573.89	539.34	-117.87	-538.43	8.01	1394301.78	3186419.10	40.413828	-104.830514
	6718.00	33.49	266.55	6654.51	585.33	-122.73	-584.39	8.41	13			

Comments	MD (ft)	Incl (°)	Azim True (°)	TVD (ft)	VSEC (ft)	NS (ft)	EW (ft)	DLS (°/100ft)	Northing (ftUS)	Easting (ftUS)	Latitude (°)	Longitude (°)
	6905.00	49.15	268.91	6794.67	708.22	-125.85	-707.26	8.52	1394292.53	3186250.35	40.413807	-104.831120
	6997.00	56.11	267.20	6850.47	781.26	-128.38	-780.28	7.71	1394289.44	3186177.35	40.413800	-104.831382
	7092.00	63.63	266.34	6898.13	863.27	-133.03	-862.25	7.95	1394284.17	3186095.42	40.413787	-104.831676
	7185.00	69.07	267.03	6935.42	948.32	-137.94	-947.27	5.89	1394278.62	3186010.45	40.413773	-104.831982
	7278.00	76.30	267.21	6963.08	1036.97	-142.40	-1035.88	7.78	1394273.49	3185921.87	40.413761	-104.832300
	7372.00	84.06	269.65	6979.10	1129.49	-144.91	-1128.39	8.64	1394270.28	3185829.39	40.413754	-104.832632
	7464.00	89.96	270.23	6983.90	1221.33	-145.01	-1220.22	6.44	1394269.49	3185737.56	40.413754	-104.832962
	7556.00	89.91	270.91	6984.00	1313.31	-144.09	-1312.22	0.74	1394269.71	3185645.65	40.413756	-104.833292
	7649.00	90.20	271.66	6983.91	1406.27	-142.01	-1405.19	0.86	1394271.09	3185552.58	40.413762	-104.833626
	7741.00	90.17	270.65	6983.62	1498.23	-140.15	-1497.17	1.10	1394272.25	3185460.59	40.413767	-104.833957
	7833.00	90.20	270.51	6983.32	1590.21	-139.22	-1589.17	0.16	1394272.48	3185368.60	40.413770	-104.834287
	7926.00	90.13	270.21	6983.05	1683.20	-138.64	-1682.17	0.33	1394272.36	3185275.60	40.413771	-104.834621
	8020.00	90.06	270.83	6982.90	1777.19	-137.78	-1776.16	0.66	1394272.50	3185181.61	40.413774	-104.834958
	8112.00	90.24	270.74	6982.66	1869.17	-136.52	-1868.15	0.22	1394273.07	3185089.61	40.413777	-104.835289
	8204.00	90.54	270.01	6982.03	1961.16	-135.92	-1960.15	0.86	1394272.97	3184997.62	40.413779	-104.835619
	8298.00	90.64	270.95	6981.06	2055.14	-135.13	-2054.14	1.01	1394273.05	3184903.63	40.413781	-104.835957
	8391.00	90.67	269.14	6980.00	2148.12	-135.06	-2147.13	1.95	1394272.42	3184810.64	40.413781	-104.836291
	8484.00	90.62	270.08	6978.95	2241.12	-135.69	-2240.12	1.01	1394271.08	3184717.66	40.413779	-104.836625
	8576.00	90.64	269.67	6977.94	2333.11	-135.89	-2332.11	0.45	1394270.18	3184625.68	40.413779	-104.836955
	8669.00	89.98	270.31	6977.44	2426.10	-135.91	-2425.11	0.99	1394269.46	3184532.69	40.413779	-104.837289
	8763.00	89.67	270.36	6977.72	2520.09	-135.36	-2519.11	0.33	1394269.30	3184438.69	40.413780	-104.837626
	8855.00	89.68	269.33	6978.25	2612.09	-135.61	-2611.11	1.12	1394268.35	3184346.70	40.413779	-104.837957
	8948.00	89.67	268.81	6978.77	2705.09	-137.12	-2704.09	0.56	1394266.14	3184253.74	40.413775	-104.838291
	9041.00	91.63	269.65	6977.72	2798.07	-138.37	-2797.07	2.29	1394264.19	3184160.77	40.413772	-104.838625
	9134.00	91.66	268.61	6975.05	2891.03	-139.78	-2890.02	1.12	1394262.07	3184067.84	40.413768	-104.838958
	9227.00	91.69	269.44	6972.33	2983.99	-141.36	-2982.97	0.89	1394259.79	3183974.91	40.413763	-104.839292
	9319.00	91.61	268.81	6969.68	3075.95	-142.76	-3074.92	0.69	1394257.69	3183882.98	40.413760	-104.839622
	9412.00	91.62	268.88	6967.06	3168.90	-144.64	-3167.86	0.08	1394255.11	3183790.05	40.413754	-104.839956
	9505.00	91.64	269.09	6964.41	3261.86	-146.29	-3260.81	0.23	1394252.76	3183697.12	40.413750	-104.840290
	9598.00	91.59	268.91	6961.79	3354.82	-147.91	-3353.76	0.20	1394250.43	3183604.19	40.413745	-104.840624
	9692.00	91.64	269.79	6959.14	3448.78	-148.97	-3447.72	0.94	1394248.65	3183510.25	40.413742	-104.840961
	9784.00	91.64	269.30	6956.51	3540.74	-149.70	-3539.67	0.53	1394247.23	3183418.31	40.413740	-104.841291
	9876.00	91.51	269.59	6953.98	3632.71	-150.60	-3631.64	0.35	1394245.64	3183326.36	40.413738	-104.841622
	9970.00	90.94	270.17	6951.97	3726.68	-150.79	-3725.61	0.87	1394244.73	3183232.39	40.413737	-104.841959
	10062.00	90.66	269.01	6950.69	3818.67	-151.45	-3817.60	1.30	1394243.38	3183140.41	40.413735	-104.842289
	10154.00	90.04	269.19	6950.13	3910.67	-152.90	-3909.59	0.70	1394241.24	3183048.44	40.413731	-104.842620
	10248.00	90.25	268.46	6949.89	4004.66	-154.82	-4003.57	0.81	1394238.60	3182954.49	40.413726	-104.842957
	10341.00	90.65	269.66	6949.16	4097.65	-156.35	-4096.55	1.36	1394236.37	3182861.52	40.413722	-104.843291
	10434.00	90.33	270.10	6948.36	4190.64	-156.54	-4189.54	0.58	1394235.47	3182768.53	40.413721	-104.843625
	10526.00	90.46	269.62	6947.73	4282.64	-156.77	-4281.54	0.54	1394234.55	3182676.54	40.413721	-104.843955
	10619.00	90.03	269.06	6947.33	4375.64	-157.84	-4374.53	0.76	1394232.77	3182583.57	40.413718	-104.844289
	10713.00	90.19	269.66	6947.15	4469.64	-158.89	-4468.53	0.66	1394231.01	3182489.59	40.413715	-104.844627
	10807.00	90.10	269.73	6946.91	4563.64	-159.39	-4562.53	0.12	1394229.80	3182395.60	40.413713	-104.844965
	10900.00	89.99	269.08	6946.84	4656.64	-160.36	-4655.52	0.71	1394228.13	3182302.62	40.413711	-104.845298
	10993.00	89.92	267.66	6946.91	4749.61	-163.00	-4748.48	1.53	1394224.78	3182209.69	40.413703	-104.845632
	11085.00	89.93	269.41	6947.03	4841.60	-165.35	-4840.45	1.90	1394221.73	3182117.74	40.413697	-104.845963
	11177.00	90.32	270.00	6946.83	4933.59	-165.83	-4932.44	0.77	1394220.56	3182025.76	40.413695	-104.846293
	11270.00	90.00	270.27	6946.57	5026.59	-165.61	-5025.44	0.45	1394220.08	3181932.76	40.413696	-104.846627
	11362.00	89.56	269.84	6946.93	5118.58	-165.52	-5117.44	0.67	1394219.47	3181840.77	40.413696	-104.846957
	11454.00	89.58	269.58	6947.62	5210.58	-165.98	-5209.44	0.28	1394218.31	3181748.78	40.413695	-104.847288
	11547.00	89.61	270.42	6948.27	5303.58	-165.98	-5302.44	0.90	1394217.60	3181655.79	40.413695	-104.847622
	11639.00	89.58	269.69	6948.92	5395.57	-165.90	-5394.43	0.79	1394216.99	3181563.80	40.413695	-104.847952
	11732.00	89.57	270.41	6949.61	5488.56	-165.81	-5487.43	0.77	1394216.37	3181470.81	40.413695	-104.848286
	11826.00	90.08	269.30	6949.90	5582.56	-166.05	-5581.43	1.30	1394215.42	3181376.82	40.413694	-104.848624
	11919.00	90.09	269.50	6949.76	5675.56	-167.03	-5674.42	0.22	1394213.74	3181283.84	40.413692	-104.848957
	12013.00	90.03	269.53	6949.66	5769.56	-167.82	-5768.42	0.07	1394212.24	3181189.86	40.413689	-104.849295
	12108.00	90.06	270.57	6949.59	5864.55	-167.74	-5863.42	1.10	1394211.60	3181094.86	40.413690	-104.849636
	12200.00	90.30	269.66	6949.30	5956.55	-167.55	-5955.41	1.02	1394211.09	3181002.87	40.413690	-104.849967
	12293.00	90.32	270.30	6948.80	6049.54	-167.59	-6048.41	0.69	1394210.35	3180909.88	40.413690	-104.850301
	12385.00	90.10	269.67	6948.46	6141.54	-167.61	-6140.41	0.73	1394209.63	3180817.89	40.413690	-104.850631
	12479.00	90.28	270.37	6948.15	6235.53	-167.58	-6234.41	0.77	1394208.95	3180723.89	40.413690	-104.850968
	12572.00	90.28	270.77	6947.69	6328.52	-166.65	-6327.40	0.43	1394209.17	3180630.90	40.413692	-104.851302
	12665.00	90.19	269.44	6947.31	6421.51	-166.48	-6420.40	1.43	1394208.64	3180537.91	40.413693	-104.851636
	12757.00	90.20	270.68	6947.00	6513.51	-166.39	-6512.40	1.35	1394208.04	3180445.92	40.413693	-104.851967
	12850.00	90.24	269.73	6946.64	6606.50	-166.05	-6605.40	1.02	1394207.67	3180352.92	40.413694	-104.852301
	12943.00	90.24	270.00	6946.25	6699.50	-166.27	-6698.40	0.29	1394206.74	3180259.93	40.413693	-104.852635
	13035.00	90.33	269.98	6945.80	6791.49	-166.29	-6790.39	0.10	1394206.03	3180167.94	40.413693	-104.852965
	13129.00	90.01	269.19	6945.52	6885.49	-166.97	-6884.39	0.91	1394204.64	3180073.95	40.413691	-104.853303
	13222.00	90.13	269.80	6945.40	6978.49	-167.79	-6977.39	0.67	1394203.12	3179980.97	40.413689	-104.853637
	13316.00	90.13	270.38	6945.19	7072.48	-167.64	-7071.39	0.62	1394202.55	3179886.98	40.413689	-104.853974
	13411.00	90.09	270.39	6945.01	7167.47	-167.00	-7166.38	0.04	1394202.47	3179791.99	40.413691	-104.854315
	13505.00	90.08	269.64	6944.87	7261.47	-166.98	-7260.38	0.80	1394201.78	3179697.99	40.413691	-104.854653
	13599.00	90.03	268.64	6944.78	7355.47	-168.39	-7354.37	1.07	1394199.66	3179604.02	40.413687	-104.854990
	13694.00	90.09	268.64	6944.68	7450.45	-170.64	-7449.34	0.06	1394196.69	3179509.07	40.413681	-104.855331
	13788.00	90.17	268.66	6944.46	7544.44	-172.86	-7543.32	0.09	1394193.76	3179415.12	40.413674	-104.855669
	13882.00	89.91	268.69	6944.40	7638.43	-175.03	-7637.29	0.28	1394190.88	3179321.17	40.413668	-104.856006
	13976.00	90.03	268.72	6944.45	7732.42	-177.16	-7731.27	0.13	1394188.04	3179227.21	40.413662	-104.856344
	14068.00	90.04	268.59	6944.39	7824.41	-179.32	-7823.24	0.				

Comments	MD (ft)	Incl (°)	Azim True (°)	TVD (ft)	VSEC (ft)	NS (ft)	EW (ft)	DLS (°/100ft)	Northing (ftUS)	Easting (ftUS)	Latitude (°)	Longitude (°)
	17031.00	91.05	269.87	6923.09	10786.94	-198.30	-10785.72	0.49	1394143.78	3176173.14	40.413601	-104.867313
	17123.00	91.27	270.12	6921.23	10878.92	-198.30	-10877.70	0.36	1394143.07	3176081.16	40.413601	-104.867643
	17215.00	91.47	270.55	6919.03	10970.89	-197.77	-10969.67	0.52	1394142.91	3175989.19	40.413602	-104.867973
	17308.00	91.41	270.35	6916.69	11063.84	-197.04	-11062.64	0.22	1394142.94	3175896.23	40.413604	-104.868307
	17402.00	91.41	270.54	6914.38	11157.80	-196.31	-11156.61	0.20	1394142.96	3175802.26	40.413606	-104.868645
	17495.00	91.29	269.22	6912.19	11250.78	-196.50	-11249.58	1.42	1394142.06	3175709.29	40.413606	-104.868978
Last SLB_MWD Survey	17587.00	91.37	270.61	6910.05	11342.75	-196.64	-11341.55	1.51	1394141.23	3175617.33	40.413605	-104.869309
Projection to Bit	17668.00	91.37	270.61	6908.11	11423.71	-195.78	-11422.52	0.00	1394141.48	3175536.36	40.413607	-104.869599

Survey Type: Def Survey

Survey Error Model: ISCWSA Rev 0 *** 3-D 95.000% Confidence 2.7955 sigma
Survey Program:

Description	Part	MD From (ft)	MD To (ft)	EOU Freq (ft)	Hole Size	Casing Diameter (in)	Survey Tool Type	Borehole / Survey
	1	0.000	14.000	1/98.425	13.500	9.625	NAL_MWD_IFR1-Depth Only	Original Hole / Bost Farm 32N-11B-L IFR 0' to 17688' Definitive
	1	14.000	20.000	Act Stns	13.500	9.625	NAL_MWD_IFR1-Depth Only	Original Hole / Bost Farm 32N-11B-L IFR 0' to 17688' Definitive
	1	20.000	1776.000	Act Stns	13.500	9.625	NAL_MWD_IFR1	Original Hole / Bost Farm 32N-11B-L IFR 0' to 17688' Definitive
	1	1776.000	17668.000	Act Stns	8.500	5.500	NAL_MWD_IFR1+MS	Original Hole / Bost Farm 32N-11B-L IFR 0' to 17688' Definitive



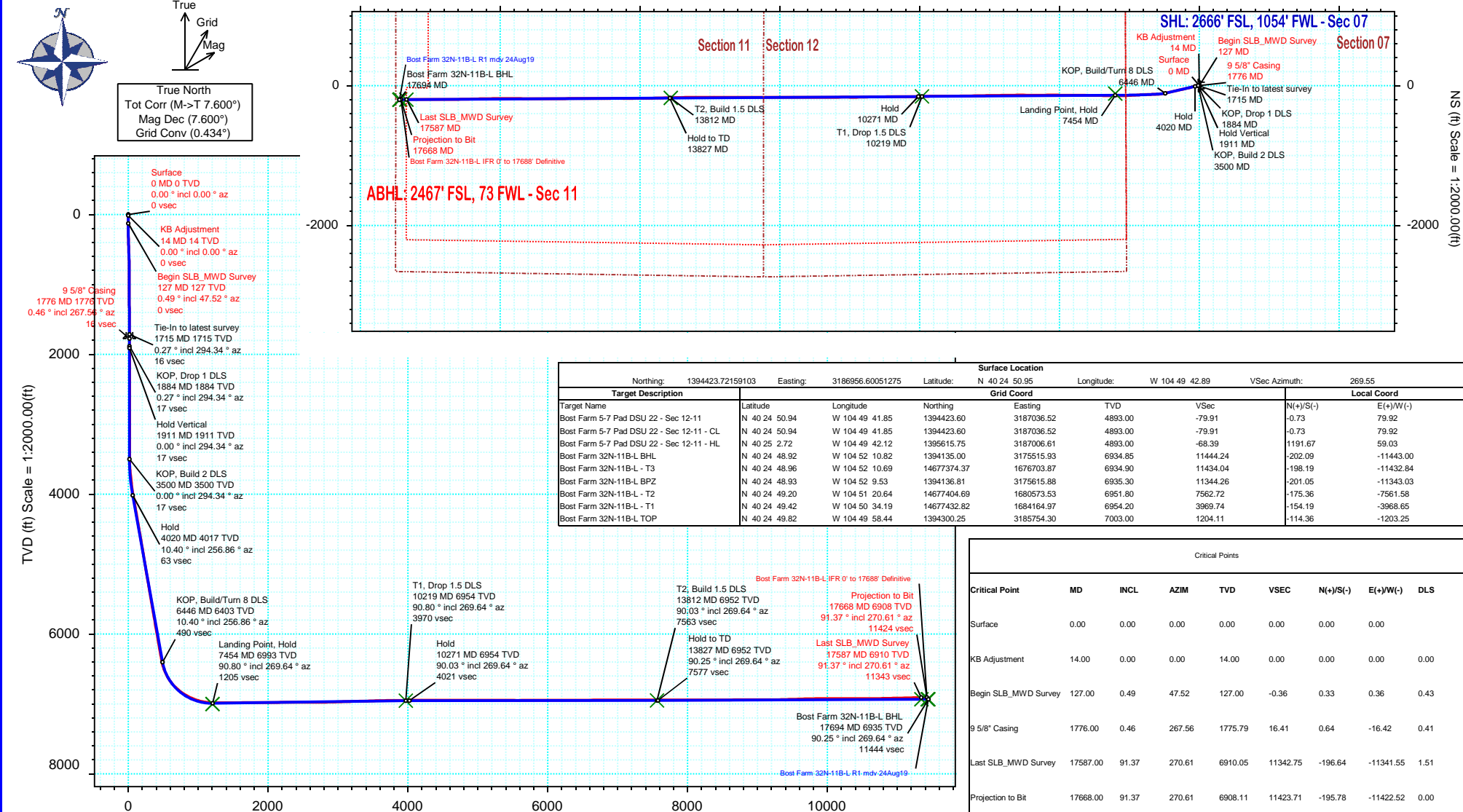
SRC Energy



Borehole:	Well:	Field:	Structure:
Original Hole	Bost Farm 32N-11B-L	CO, Weld County (NAD 83 NZ) - SRC	SRC Energy 07-05N-66W (Bost Farm 5-7 Pad DSU 20)

Gravity & Magnetic Parameters				Surface Location				Miscellaneous			
Model:	Magvar IFR	Dip:	66.6°	Date:	27-Aug-2019	Lat:	N 40 24 50.95	Northing:	1394423.72ftUS	Grid Conv:	0.4338°
MagDec:	7.6°	FS:	52221nT	Gravity FS:	999.024mgn (9.80665 Based)	Lon:	W 104 49 42.89	Easting:	3186956.6ftUS	Scale Fact:	0.9999609
								Slot: Bost Farm 32N-11B-L			
								TVD Ref: KB 20ft(4893ft above MSL)			
								Plan: Bost Farm 32N-11B-L IFR 0' to 17688' Definitive			

Final Pva



Vertical Section (ft) Azim = 269.55° Scale = 1:2000.00(ft) Origin = 0N/-S, 0E/-W