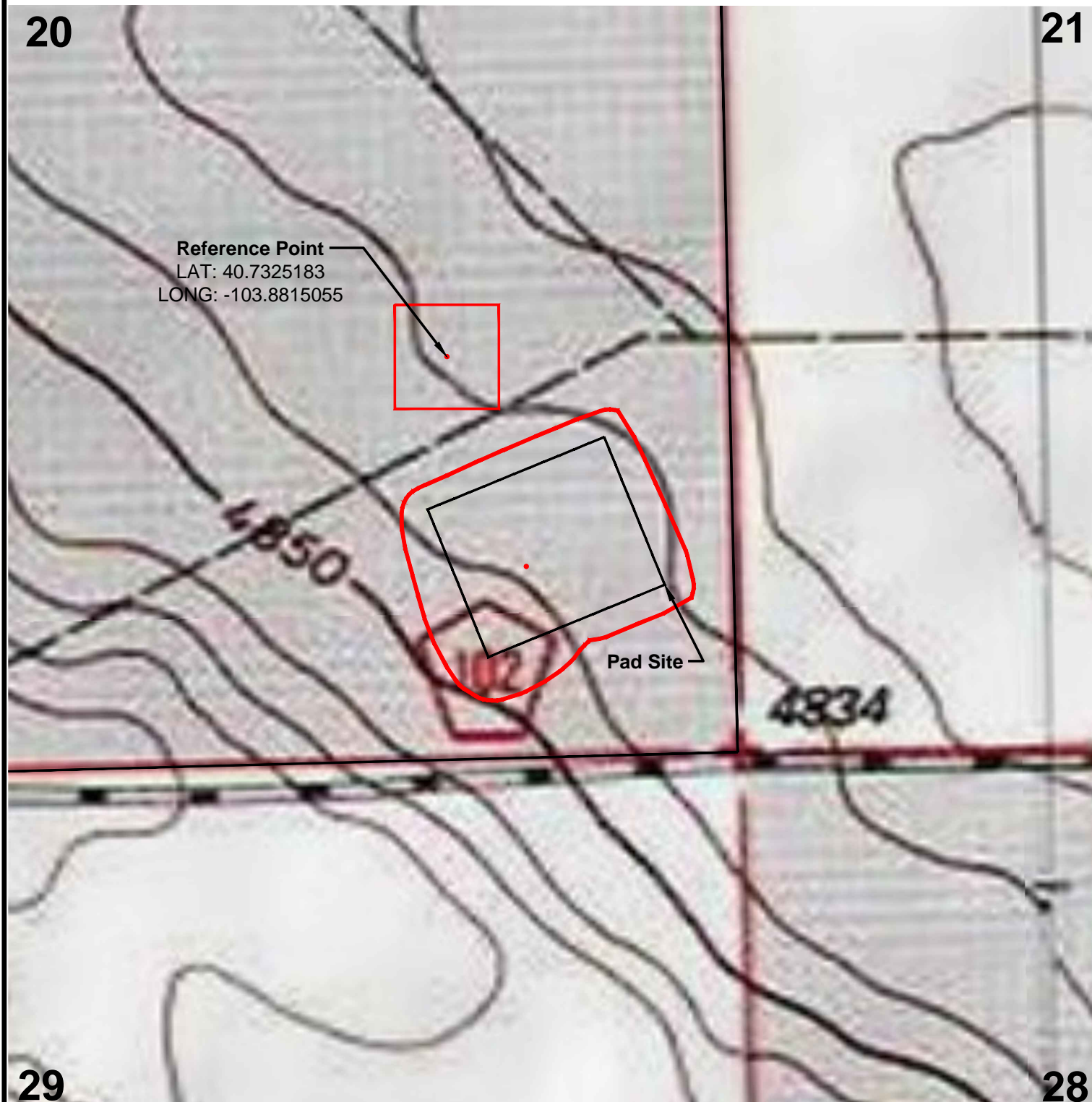


# REFERENCE AREA MAP

SE 1/4 SE 1/4 SECTION 20  
T9N R58W 6TH PM  
WELD COUNTY, COLORADO



<b>VERDAD RESOURCES</b> <b>BRINGELSON FED</b> <b>2021 &amp; 2029</b> <b>JOB NO. 117568 &amp; 117832</b>	MAPP	December 31, 2019	REVISION:		<b>NOTE:</b> ALL PRODUCTION FACILITIES WILL BE ON PAD	 LOYALTY INNOVATION LEGACY 520 Stacy Court Ste B, Lafayette, CO 80026 303.666.0379 www.topographic.com
	SHEET :	1 OF 1	INT	DATE		
	FILE:	F2A_BRINGELSON_2021_2029_REFERENCE_REV1				