



Crestone Peak Resources

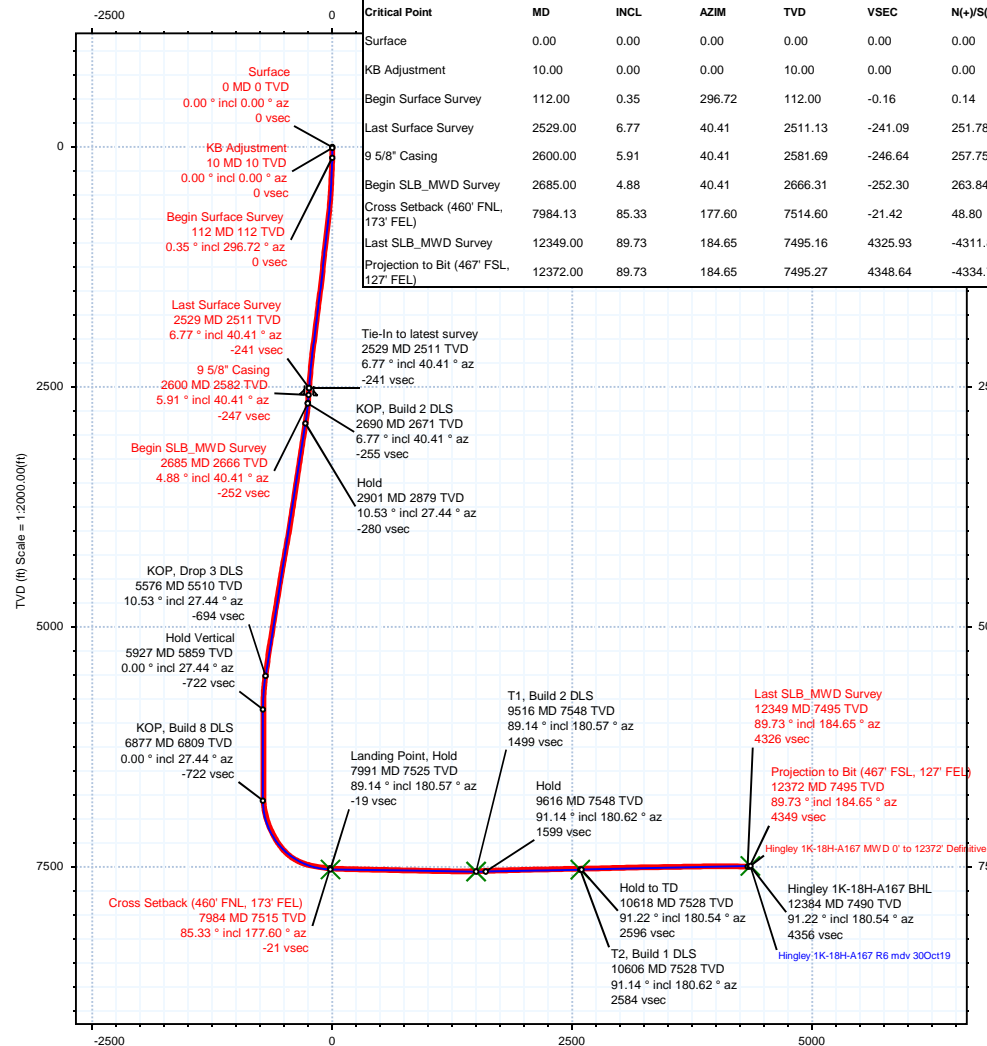
Schlumberger

Borehole:	Well:	Field:	Structure:
Original Hole	Hingley 1K-18H-A167	CO, Weld County (NAD 83 NZ) - 2019	Crestone Peak 18-01N-67W (Hingley 18H-A167 Pad)

Gravity & Magnetic Parameters	Surface Location	Miscellaneous
Model: HDGM 2019 Dip: 66.353° Date: 25-Oct-2019	NAD83 Colorado State Plane, Northern Zone, US Feet	Slot: Hingley 1K-18H-A167
MagDec: 8.226° FS: 51961.569mT Gravity FS: 998.97mgn (9.80665 Based)	Lat: N 40 3 25.22 Northing: 1264133.05fUS Grid Conv: 0.371°	TVD Ref: KB 23ft(5081ft above MSL)
	Lon: W 104 55 32.93 Easting: 3160724.4fUS Scale Fact: 0.99996253	Plan: Hingley 1K-18H-A167 MWD 0' to 12372' Definitive

Target Description	Northing	Easting	Surface Location	Longitude	VSec Azimuth	Local Coord
	1264133.04795782	3160724.40366032	N 40 3 25.22	W 104 55 32.93	175.47	
Target Name	Latitude	Longitude	Northing	Easting	TVD	VSec
Hingley 18H-A167 Pad Sec 18 - 460' SB	N 40 3 25.22	W 104 55 32.93	1264133.05	3160724.40	5081.00	0.00
Hingley 18H-A167 Pad Sec 18 - 460' Heel	N 40 3 25.22	W 104 55 32.93	1264133.05	3160724.40	5081.00	0.00
Hingley 18H-A167 Pad Sec 18 - 460' Toe	N 40 3 25.22	W 104 55 32.93	1264133.05	3160724.40	5081.00	0.00
Hingley 18H-A167 Pad Sec 18	N 40 3 25.22	W 104 55 32.93	1264133.05	3160724.40	5081.00	0.00
Hingley 1K-18H-A167 BHL	N 40 2 42.31	W 104 55 28.51	1259793.44	3161096.60	7490.00	4355.71
Hingley 1K-18H-A167 TPZ	N 40 3 25.70	W 104 55 27.95	1264184.06	3161111.77	7525.00	-17.73
Hingley 1K-18H-A167 - T2	N 40 2 59.88	W 104 55 28.29	1261571.54	3161101.78	7528.00	2584.49
Hingley 1K-18H-A167 - T1	N 40 3 10.66	W 104 55 28.14	1262661.55	3161106.53	7548.00	1498.82

Critical Points	MD	INCL	AZIM	TVD	VSEC	N(+)S(-)	E(+)W(-)	DLS
Surface	0.00	0.00	0.00	0.00	0.00	0.00	0.00	0.00
KB Adjustment	10.00	0.00	0.00	10.00	0.00	0.00	0.00	0.00
Begin Surface Survey	112.00	0.35	296.72	112.00	-0.16	0.14	-0.28	0.34
Last Surface Survey	2529.00	6.77	40.41	2511.13	-241.09	251.78	125.42	0.90
9 5/8" Casing	2600.00	5.91	40.41	2581.69	-246.64	257.75	130.50	1.21
Begin SLB_MWD Survey	2685.00	4.88	40.41	2666.31	-252.30	263.84	135.68	1.21
Cross Setback (460' FNL, 173' FEL)	7984.13	85.33	177.60	7514.60	-21.42	48.80	344.79	4.51
Last SLB_MWD Survey	12349.00	89.73	184.65	7495.16	4325.93	-4311.83	349.14	2.57
Projection to Bit (467' FSL, 127' FEL)	12372.00	89.73	184.65	7495.27	4348.64	-4334.75	347.27	0.00



Vertical Section (ft) Azim = 175.47° Scale = 1:2000.00(ft) Origin = 0N/-S, 0E/-W

