

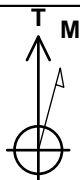
FINAL PLOT

Well Name: **Hingley 11-18H-A167**

Surface Location: Sec.18-T1N-R67W (HINGLEY)
North American Datum 1983 , US State Plane 1983, Colorado Northern Zone
Ground Elevation: 5058.0
+N/-S +E/-W Northing Easting Latitude Longitude Slot
0.0 0.0 1264132.89 3160704.25 40.057006 -104.925887
Ensign 153 RKB - 23' WELL @ 5081.0ft (Ensign 153 RKB - 23')

WELLBORE TARGET DETAILS

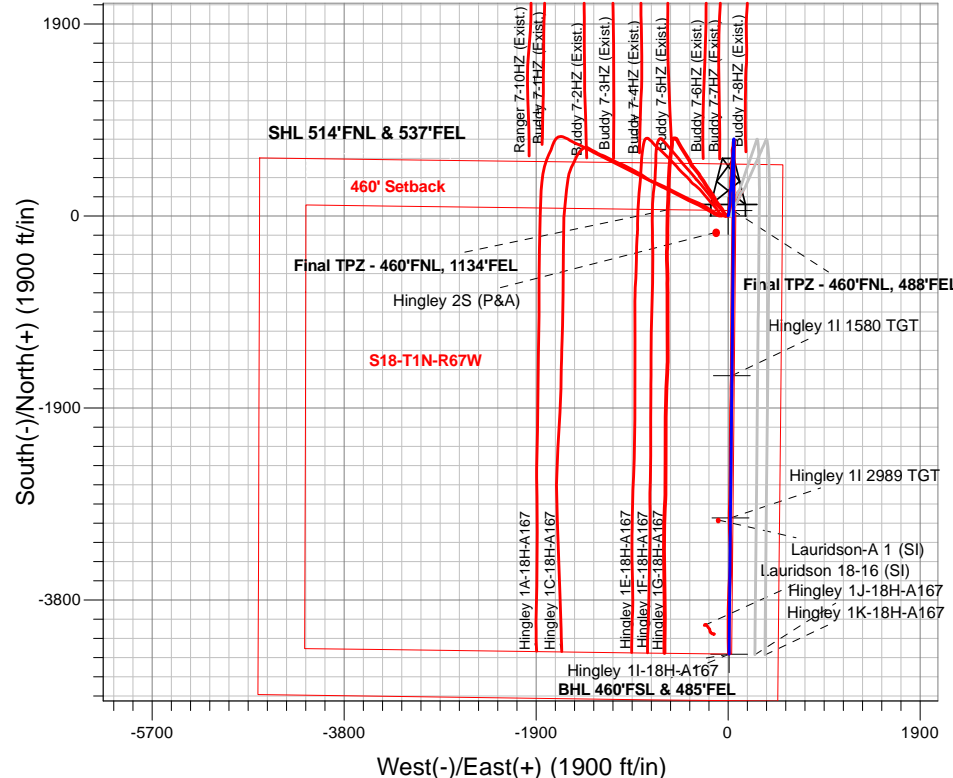
Name	TVD	+N/-S	+E/-W	Shape
SHL 514'FNL & 537'FEL	1.0	0.0	0.0	Point
BHL 460'FSL & 485'FEL	7598.0	-4337.8	9.1	Point
Hingley 11 2989 TGT	7606.0	-2989.0	22.5	Point
TPZ 460'FNL & 485'FEL	7612.0	52.9	52.7	Point
Hingley 11 1580 TGT	7628.0	-1580.0	36.5	Point



Azimuths to True North
Magnetic North: 8.20°

Magnetic Field
Strength: 51975.2snT
Dip Angle: 66.38°
Date: 10/22/2019
Model: HDGM

Sec.18-T1N-R67W (HINGLEY)
Hingley 11-18H-A167
Plan #8 (10-22-19)
9:00, October 31 2019



SECTION DETAILS

Sec	MD	Inc	Azi	TVD	+N/-S	+E/-W	Dleg	TFace	VSec	Target
1	2595.0	5.70	17.23	2579.5	259.9	25.6	0.00	0.00	-259.8	
2	2695.0	5.70	17.23	2679.1	269.4	28.5	0.00	0.00	-269.3	
3	2787.9	6.75	3.05	2771.5	279.2	30.2	2.00	-62.66	-279.2	
4	6856.4	6.75	3.05	6811.7	757.1	55.6	0.00	0.00	-757.0	
5	8058.8	89.44	180.57	7612.0	52.9	52.7	8.00	177.51	-52.7	TPZ 460'FNL & 485'FEL
6	9691.8	89.44	180.57	7628.0	-1580.0	36.5	0.00	0.00	1580.1	Hingley 11 1580 TGT
7	9766.5	90.93	180.57	7627.8	-1654.8	35.8	2.00	0.03	1654.8	
8	11101.0	90.93	180.57	7606.0	-2989.0	22.5	0.00	0.00	2989.0	Hingley 11 2989 TGT
9	11131.1	90.33	180.57	7605.7	-3019.0	22.2	2.00	-179.99	3019.1	
10	12449.9	90.33	180.57	7598.0	-4337.8	9.1	0.00	0.00	4337.8	BHL 460'FSL & 485'FEL

