

FINAL PLOT

Well Name: **Hingley 1F-18H-A167**

Surface Location: Sec.18-T1N-R67W (HINGLEY)
North American Datum 1983 , US State Plane 1983, Colorado Northern Zone
Ground Elevation: 5056.0
+N/-S +E/-W Northing Easting Latitude Longitude Slot
0.0 0.0 1264133.07 3160674.30 40.057007 -104.925994
Ensign 153 RKB - 23' WELL @ 5079.0ft (Ensign 153 RKB - 23')

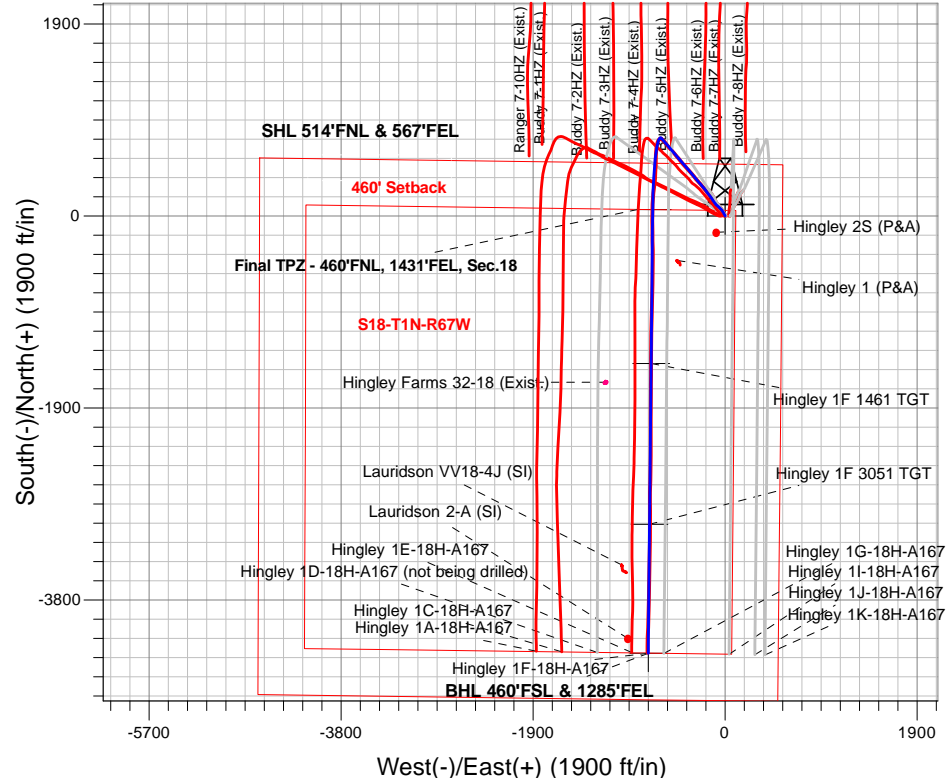
WELLBORE TARGET DETAILS

Name	TVD	+N/-S	+E/-W	Shape
SHL 514'FNL & 567'FEL	1.0	0.0	0.0	Point
Hingley 1F 3051 TGT	7750.0	-3051.0	-748.2	Point
BHL 460'FSL & 1285'FEL	7755.0	-4327.6	-761.0	Point
TPZ 460'FNL & 1285'FEL	7766.0	63.0	-717.2	Point
Hingley 1F 1461 TGT	7774.0	-1461.0	-732.4	Point

Azimuths to True North
Magnetic North: 8.20°

Magnetic Field
Strength: 51979.1snT
Dip Angle: 66.38°
Date: 10/10/2019
Model: HDGM

Sec.18-T1N-R67W (HINGLEY)
Hingley 1F-18H-A167
Plan #4 (10-10-19)
7:38, October 17 2019



ENSIGN
Directional

SECTION DETAILS

Sec	MD	Inc	Azi	TVD	+N/-S	+E/-W	Dleg	TFace	VSec	Target
1	2573.0	8.32	324.45	2547.9	255.1	-194.3	0.00	0.00	-217.6	
2	2673.0	8.32	324.45	2646.8	266.9	-202.7	0.00	0.00	-227.7	
3	2713.3	8.69	319.58	2686.7	271.5	-206.4	2.00	-65.60	-231.7	
4	7048.4	8.69	319.58	6972.1	770.0	-630.9	0.00	0.00	-649.1	
5	8251.5	89.70	180.57	7766.0	63.0	-717.2	8.00	-138.71	62.1	TPZ 460'FNL & 1285'FEL
6	9775.7	89.70	180.57	7774.0	-1461.0	-732.4	0.00	0.00	1565.8	Hingley 1F 1461 TGT
7	9835.1	90.89	180.57	7773.7	-1520.4	-733.0	2.00	-0.19	1624.3	
8	11365.9	90.89	180.57	7750.0	-3051.0	-748.2	0.00	0.00	3134.5	Hingley 1F 3051 TGT
9	11422.8	89.75	180.57	7749.7	-3107.8	-748.8	2.00	179.84	3190.5	
10	12642.6	89.75	180.57	7755.0	-4327.6	-761.0	0.00	0.00	4394.0	BHL 460'FSL & 1285'FEL

