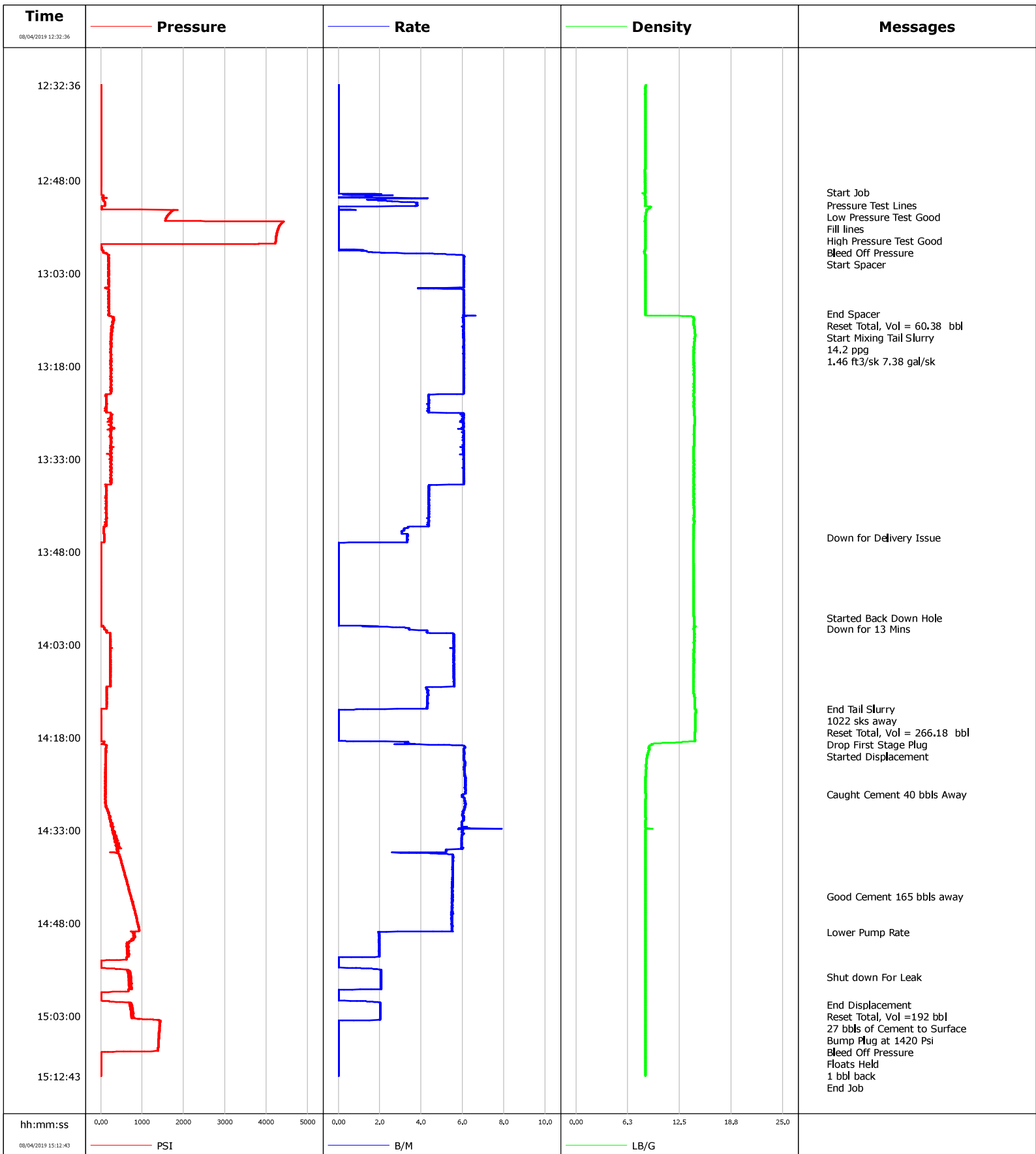


<b>Well</b>	Hingley 1E-18H-A167	<b>Client</b>	Crestone Peak Resources Operat
<b>Field</b>	DJ	<b>SIR No.</b>	3023810
<b>Engineer</b>	Jermarco Arrington	<b>Job Type</b>	Cem Surface Casing
<b>Country</b>	United States	<b>Job Date</b>	08-04-2019



				Customer			Job Number			
				Crestone Peak Resources Operat			3023810			
Well		Location (legal)			Schlumberger Location			Job Start		
Hingley 1E-18H-A167		Longmount						Aug/04/2019		
Field		Formation Name/Type			Deviation	Bit Size		Well MD	Well TVD	
DJ					deg	13.5 in		2570.0 ft	2586.0 ft	
County		State/Province			BHP	BHST	BHCT	Pore Press. Gradient		
Weld		Colorado			psi	115 degF	85 degF	lb/gal		
Well Master		API/UWI								
006473560		05-123-47162-00-00								
Rig Name		Drilled For	Service Via		Casing/Liner					
Ensign 122		Oil	Land		Depth, ft	Size, in	Weight, lb/ft	Grade	Thread	
Offshore Zone		Well Class	Well Type		112.0	16.0	55.0			
		New	Development		2570.0	9.6	40.0			
Drilling Fluid Type		Max. Density	Plastic Viscosity		Tubing/Drill Pipe					
Spud Mud		8.70 lb/gal	27.000 cP		T/D	Depth, ft	Size, in	Weight, lb/ft	Grade	Thread
Service Line		Job Type								
Cementing		Cem Surface Casing								
Max. Allowed Tub. Press		Max. Allowed Ann. Press	WH Connection		Perforations/Open Hole					
3950 psi		psi	Sub-sea cement head		Top, ft	Bottom, ft	shot/ft	No. of Shots	Total Interval	
<b>Service Instructions</b> Cementing 9 5/8" Surface Casing at 2570 ft 13 1/2" Hole with 15% excess 14.2 ppg Tail Class C					ft	ft			ft	
					ft	ft			Diameter	
					ft	ft			in	
					Treat Down	Displacement	Packer Type	Packer Depth		
						192.0 bbl		ft		
					Tubing Vol.	Casing Vol.	Annular Vol.	Openhole Vol.		
					bbl	194.8 bbl	230.0 bbl	213.0 bbl		
Casing/Tubing Secured		1 Hole Vol. Circulated prior to Cement	Casing Tools		Squeeze Job					
<input checked="" type="checkbox"/>		<input checked="" type="checkbox"/>								
Lift Pressure		Shoe Type			Shoe Depth		Squeeze Type			
1413 psi		Float			2570.0 ft					
Pipe Rotated		Pipe Reciprocated	Stage Tool Type		Tool Depth					
<input type="checkbox"/>		<input type="checkbox"/>			ft					
No. Centralizers		Top Plugs	Bottom Plugs		Stage Tool Depth		Tail Pipe Size			
		1			ft		in			
Cement Head Type		Job Scheduled For			Arrived on Location		Leave Location		Collar Type	Tail Pipe Depth
Single		Aug/04/2019 11:00			Aug/04/2019 15:12		Aug/04/2019 16:00		Float	ft
									Collar Depth	Sqz. Total Vol.
									2528.0 ft	bbl
Date	Time 24-hr clock	Treating Pressure PSI	Flow Rate B/M	Density LB/G	Message					
08/04/2019	12:32:36	0	0.0	8.41	Started Acquisition					
08/04/2019	12:49:58	-2	0.0	8.33	Start Job					
08/04/2019	12:52:00	106	3.8	8.34	Pressure Test Lines					
08/04/2019	12:52:06	105	3.8	8.34	Low Pressure Test Good					
08/04/2019	12:53:35	1628	0.0	8.40	Fill lines					
08/04/2019	12:54:07	1572	0.0	8.37	High Pressure Test Good					
08/04/2019	12:58:04	4214	0.0	8.34	Bleed Off Pressure					
08/04/2019	12:58:06	4213	0.0	8.34	Start Spacer					
08/04/2019	13:09:35	203	6.0	8.34	End Spacer					
08/04/2019	13:09:47	176	6.1	8.34	Reset Total, Vol = 60.38 bbl					
08/04/2019	13:10:00	253	6.1	13.95	Start Mixing Tail Slurry					
08/04/2019	13:13:31	240	6.1	14.30	14.2 ppg					
08/04/2019	13:14:31	251	6.0	14.24	1.46 ft3/sk 7.38 gal/sk					
08/04/2019	13:45:42	77	3.3	14.17	Down for Delivery Issue					
08/04/2019	13:58:42	-2	0.0	14.23	Started Back Down Hole					
08/04/2019	14:00:27	85	3.4	14.21	Down for 13 Mins					
08/04/2019	14:13:25	26	4.1	14.31	End Tail Slurry					
08/04/2019	14:13:27	8	2.2	14.37	1022 sks away					
08/04/2019	14:13:32	-2	0.7	14.45	Reset Total, Vol = 266.18 bbl					
08/04/2019	14:18:25	1	0.0	14.35	Drop First Stage Plug					
08/04/2019	14:18:35	9	0.1	14.34	Started Displacement					

Well		Field		Job Start		Customer		Job Number	
Hingley 1E-18H-A167		DJ		Aug/04/2019		Crestone Peak Resources Operat		3023810	
Date	Time 24-hr clock	Treating Pressure PSI	Flow Rate B/M	Density LB/G	Message				
08/04/2019	14:43:45	722	5.5	8.35	Good Cement 165 bbls away				
08/04/2019	14:49:28	798	2.0	8.35	Lower Pump Rate				
08/04/2019	14:56:45	671	2.1	8.34	Shut down For Leak				
08/04/2019	15:01:12	723	2.0	8.35	End Displacement				
08/04/2019	15:02:38	772	2.0	8.35	Reset Total, Vol =192 bbl				
08/04/2019	15:02:50	794	2.0	8.34	27 bbls of Cement to Surface				
08/04/2019	15:03:46	1443	0.0	8.35	Bump Plug at 1420 Psi				
08/04/2019	15:08:20	1379	0.0	8.35	Bleed Off Pressure				
08/04/2019	15:09:38	4	0.0	8.35	Floats Held				
08/04/2019	15:09:39	4	0.0	8.35	1 bbl back				

### Post Job Summary

Average Pump Rates, bbl/min					Volume of Fluid Injected, bbl			
Slurry	N2	Mud	Maximum Rate	Total Slurry	Mud	Spacer	N2	
6.0			8.5	266.0		60.0		
Treating Pressure Summary, psi					Breakdown Fluid			
Maximum	Final	Average	Bump Plug to	Breakdown	Type	Volume	Density	
1413	0		1420		FreshWater	192.0 bbl	8.34 lb/gal	
Avg. N2 Percent	Designed Slurry Volume	Displacement	Mix Water Temp	Cement Circulated to Surface?	<input checked="" type="checkbox"/>	Volume	27.0 bbl	
%	252.0 bbl	192.0 bbl	78 degF	Washed Thru Perfs	<input type="checkbox"/>	To	ft	
Customer or Authorized Representative			Schlumberger Supervisor	Circulation Lost	<input type="checkbox"/>	Job Completed	<input checked="" type="checkbox"/>	
			Jermarco Arrington	-		-		