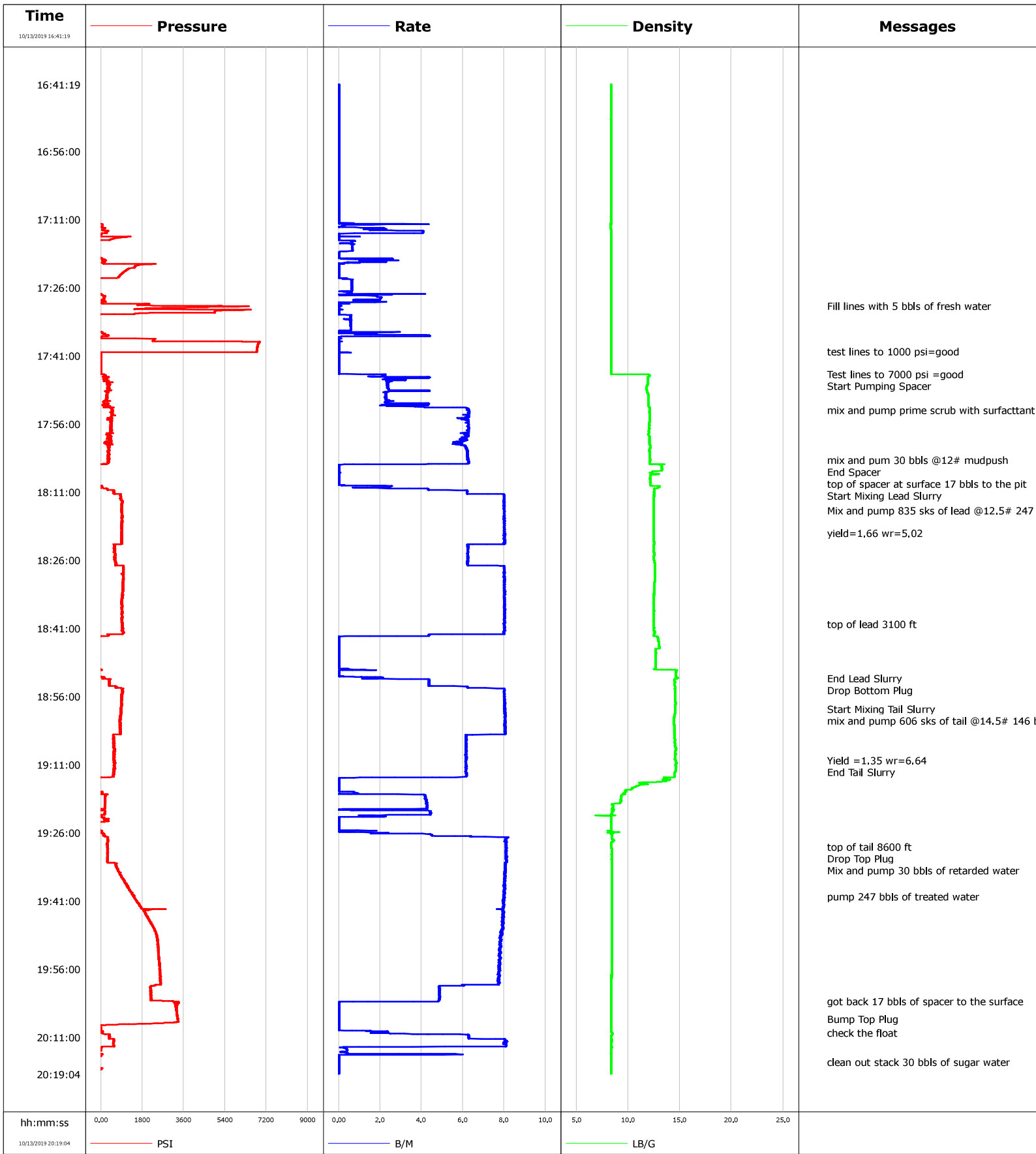


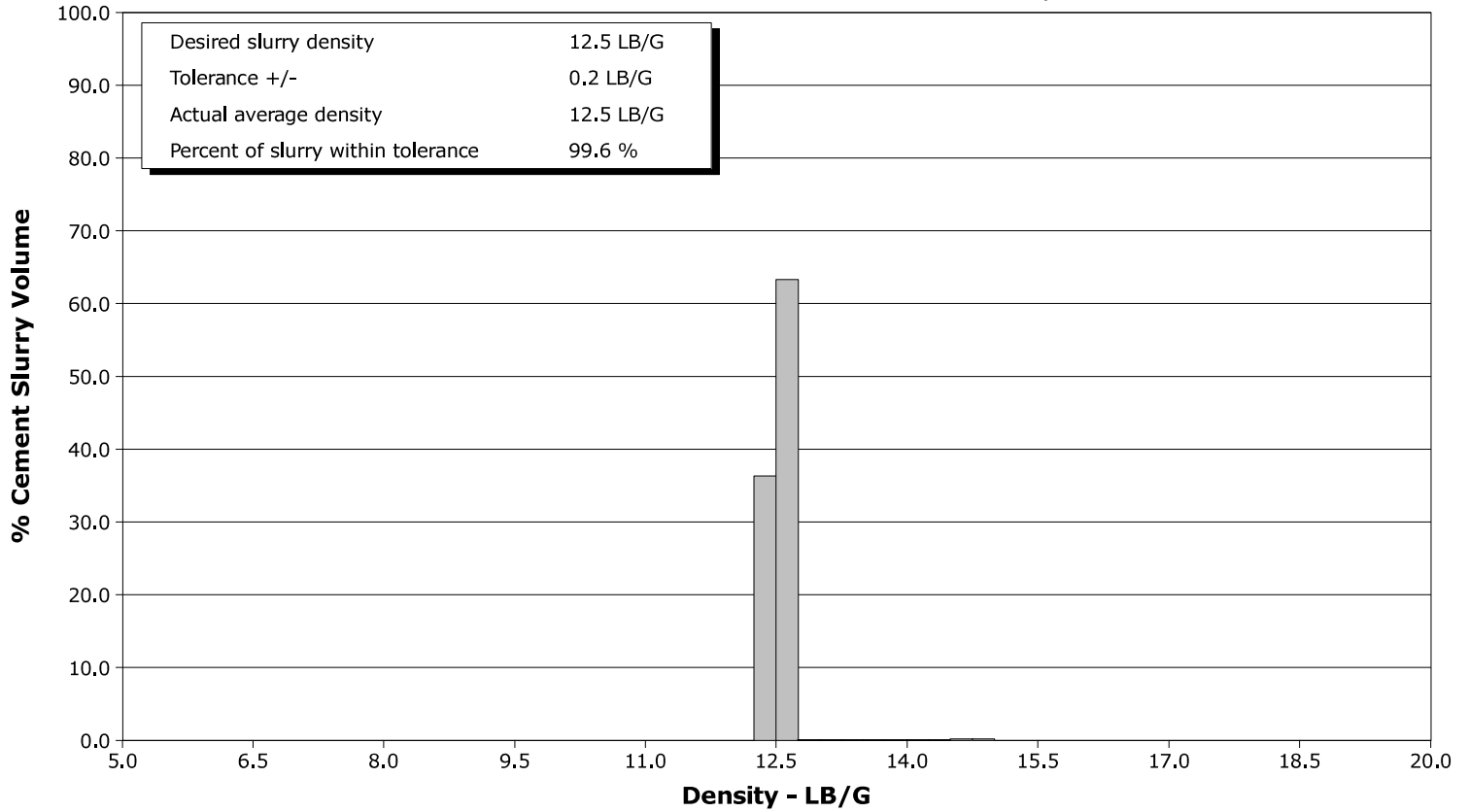
| | | | |
|-----------------|---------------|-----------------|----------------|
| Well | HINGLEY | Client | CRESTONE PEAKE |
| Field | WILDCAT | SIR No. | 3070093 |
| Engineer | ALBERT SNYDER | Job Type | PRODUCTION |
| Country | United States | Job Date | 10-13-2019 |



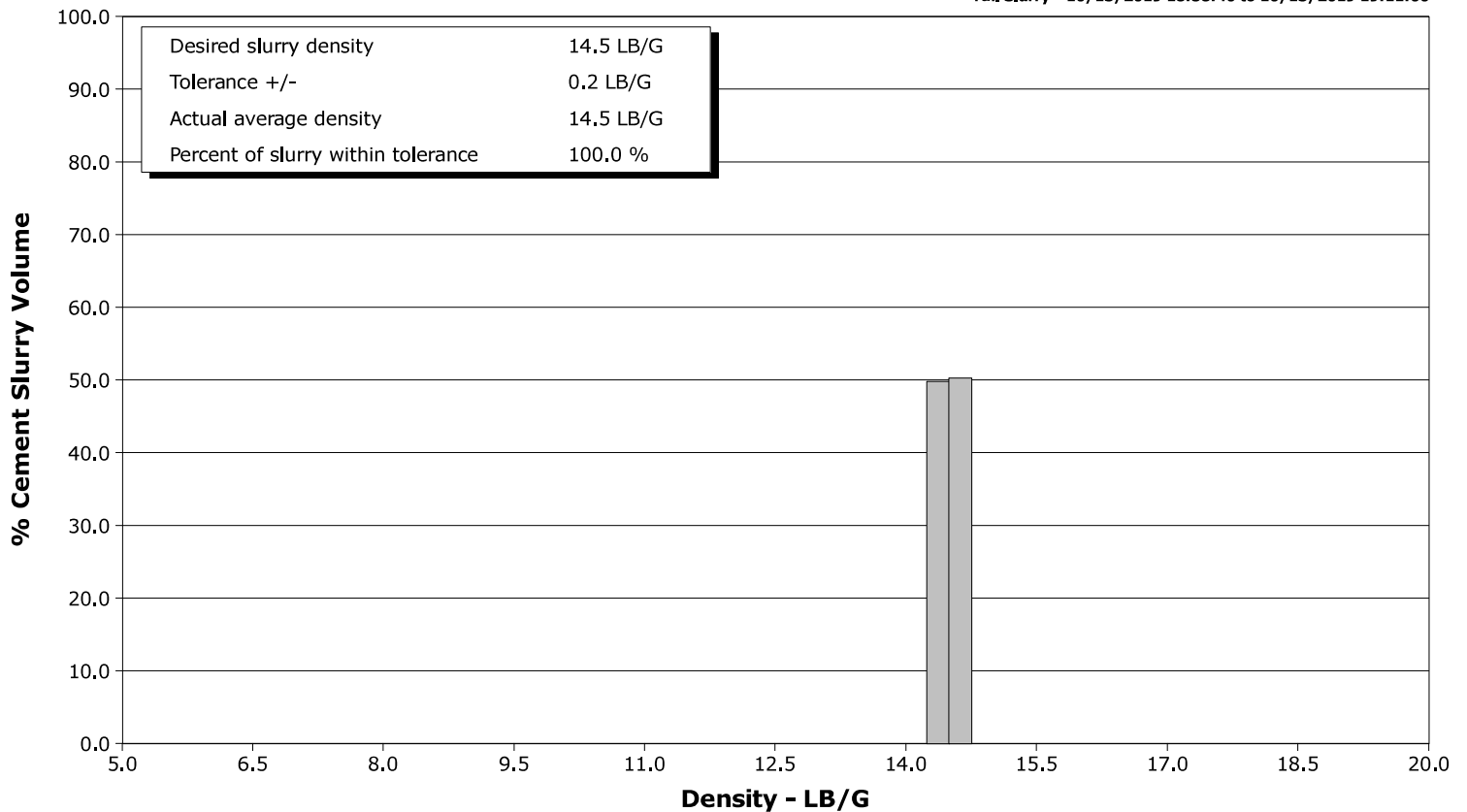
Well HINGLEY
Field WILDCAT
Engineer ALBERT SNYDER
Country United States

Client CRESTONE PEAKE
SIR No. 3070093
Job Type PRODUCTION
Job Date 10-13-2019

Lead Slurry - 10/13/2019 18:10:05 to 10/13/2019 18:52:00



Tail Slurry - 10/13/2019 18:58:40 to 10/13/2019 19:11:00



| | | | | Customer | | | Job Number | | | |
|--------------------------|------------------|--|-------------------|-------------------|------------------------|---------------------|-----------------|----------------------|----------------|--------|
| | | | | CRESTONE PEAKE | | | 3070093 | | | |
| Well | | Location (legal) | | | Schlumberger Location | | | Job Start | | |
| HINGLEY 1E-18H-A167 | | 1E-18H-A167 | | | CWY | | | Oct/13/2019 | | |
| Field | | Formation Name/Type | | | Deviation | Bit Size | | Well MD | Well TVD | |
| WILDCAT | | | | | deg | in | | 12514.0 ft | 7590.0 ft | |
| County | | State/Province | | | BHP | BHST | BHCT | Pore Press. Gradient | | |
| WELD | | Colorado | | | psi | 235 degF | 213 degF | lb/gal | | |
| Well Master | | API/UWI | | | | | | | | |
| 05-123-47162 | | | | | | | | | | |
| Rig Name | Drilled For | | Service Via | | Casing/Liner | | | | | |
| E 153 | Oil & Gas | | Land | | Depth, ft | Size, in | Weight, lb/ft | Grade | Thread | |
| Offshore Zone | Well Class | | Well Type | | 2526.0 | 9.6 | 40.0 | 110 | 8RD | |
| N/A | New | | Development | | 12500.0 | 5.5 | 20.0 | 110 | BUTT | |
| Drilling Fluid Type | | Max. Density | Plastic Viscosity | | Tubing/Drill Pipe | | | | | |
| LT OBM | | 10.50 lb/gal | 9.000 cP | | T/D | Depth, ft | Size, in | Weight, lb/ft | Grade | Thread |
| Service Line | | Job Type | | | | | | | | |
| Cementing | | PRODUCTION | | | | | | | | |
| Max. Allowed Tub. Press | | Max. Allowed Ann. Press | | WH Connection | Perforations/Open Hole | | | | | |
| psi | | psi | | | Top, ft | Bottom, ft | shot/ft | No. of Shots | Total Interval | |
| Service Instructions | | | | | ft | ft | | | ft | |
| | | | | | ft | ft | | | Diameter | |
| | | | | | ft | ft | | | in | |
| Treat Down | | Displacement | | Packer Type | | Packer Depth | | | | |
| Casing | | 277.0 bbl | | | | ft | | | | |
| Tubing Vol. | | Casing Vol. | | Annular Vol. | | Openhole Vol. | | | | |
| bbl | | 277.2 bbl | | 157.0 bbl | | 407.5 bbl | | | | |
| Casing/Tubing Secured | | 1 Hole Vol. Circulated prior to Cement | | | Casing Tools | | | Squeeze Job | | |
| <input type="checkbox"/> | | <input type="checkbox"/> | | | | | | | | |
| Lift Pressure | | Shoe Type | | | Guide | | Squeeze Type | | | |
| 10523 psi | | | | | | | | | | |
| Pipe Rotated | | Pipe Reciprocated | | | Shoe Depth | | Tool Type | | | |
| <input type="checkbox"/> | | <input type="checkbox"/> | | | 12500.0 ft | | | | | |
| No. Centralizers | | Top Plugs | Bottom Plugs | | Stage Tool Type | | | Tool Depth | | |
| | | | | | | | | ft | | |
| Cement Head Type | | Double | | | Stage Tool Depth | | | Tail Pipe Size | | |
| | | | | | ft | | | in | | |
| Job Scheduled For | | Arrived on Location | | Leave Location | Collar Type | | Tail Pipe Depth | | ft | |
| Oct/13/2019 07:00 | | Oct/13/2019 12:30 | | Oct/13/2019 14:00 | Float | | | | | |
| | | | | | Collar Depth | | Sqz. Total Vol. | | bbl | |
| | | | | | 12483.0 ft | | | | | |
| Date | Time 24-hr clock | Treating Pressure PSI | Flow Rate B/M | Density LB/G | Volume BBL | Message | | | | |
| 10/13/2019 | 16:41:19 | -11 | 0.0 | 8.36 | 0.0 | Started Acquisition | | | | |
| 10/13/2019 | 16:43:19 | -11 | 0.0 | 8.37 | 0.0 | | | | | |
| 10/13/2019 | 16:45:19 | -11 | 0.0 | 8.37 | 0.0 | | | | | |
| 10/13/2019 | 16:47:19 | -11 | 0.0 | 8.37 | 0.0 | | | | | |
| 10/13/2019 | 16:49:19 | -11 | 0.0 | 8.36 | 0.0 | | | | | |
| 10/13/2019 | 16:51:19 | -11 | 0.0 | 8.36 | 0.0 | | | | | |
| 10/13/2019 | 16:53:19 | -11 | 0.0 | 8.37 | 0.0 | | | | | |
| 10/13/2019 | 16:55:19 | -11 | 0.0 | 8.37 | 0.0 | | | | | |
| 10/13/2019 | 16:57:19 | -11 | 0.0 | 8.37 | 0.0 | | | | | |
| 10/13/2019 | 16:59:19 | -11 | 0.0 | 8.37 | 0.0 | | | | | |
| 10/13/2019 | 17:01:19 | -11 | 0.0 | 8.37 | 0.0 | | | | | |
| 10/13/2019 | 17:03:19 | -11 | 0.0 | 8.37 | 0.0 | | | | | |
| 10/13/2019 | 17:05:19 | -10 | 0.0 | 8.37 | 0.0 | | | | | |
| 10/13/2019 | 17:07:19 | -11 | 0.0 | 8.37 | 0.0 | | | | | |
| 10/13/2019 | 17:09:19 | -11 | 0.0 | 8.37 | 0.0 | | | | | |
| 10/13/2019 | 17:11:19 | -12 | 0.0 | 8.37 | 0.0 | | | | | |
| 10/13/2019 | 17:13:19 | 56 | 1.5 | 8.36 | 1.6 | | | | | |
| 10/13/2019 | 17:15:19 | 521 | 0.0 | 8.37 | 4.4 | | | | | |
| 10/13/2019 | 17:17:19 | -8 | 0.7 | 8.37 | 5.4 | | | | | |
| 10/13/2019 | 17:19:19 | -5 | 0.0 | 8.36 | 5.9 | | | | | |
| 10/13/2019 | 17:21:19 | 1481 | 0.0 | 8.36 | 7.7 | | | | | |

| Well | | | Field | Job Start | Customer | Job Number |
|---------------------|------------------|-----------------------|---------------|--------------|----------------|---|
| HINGLEY 1E-18H-A167 | | | WILDCAT | Oct/13/2019 | CRESTONE PEAKE | 3070093 |
| Date | Time 24-hr clock | Treating Pressure PSI | Flow Rate B/M | Density LB/G | Volume BBL | Message |
| 10/13/2019 | 17:25:19 | -11 | 0.6 | 8.36 | 8.5 | |
| 10/13/2019 | 17:27:19 | -11 | 0.6 | 8.37 | 9.6 | |
| 10/13/2019 | 17:29:19 | 38 | 0.0 | 8.37 | 12.6 | |
| 10/13/2019 | 17:30:00 | 2283 | 0.1 | 8.36 | 12.6 | Fill lines with 5 bbls of fresh water |
| 10/13/2019 | 17:31:19 | 4951 | 0.0 | 8.37 | 12.7 | |
| 10/13/2019 | 17:33:19 | -13 | 0.6 | 8.37 | 13.3 | |
| 10/13/2019 | 17:35:19 | -13 | 0.6 | 8.37 | 14.5 | |
| 10/13/2019 | 17:37:19 | 2343 | 0.0 | 8.37 | 17.0 | |
| 10/13/2019 | 17:39:19 | 6797 | 0.0 | 8.37 | 17.0 | |
| 10/13/2019 | 17:40:00 | 6779 | 0.0 | 8.37 | 17.0 | test lines to 1000 psi=good |
| 10/13/2019 | 17:41:19 | 13 | 0.0 | 8.36 | 0.0 | |
| 10/13/2019 | 17:43:19 | 16 | 0.0 | 8.36 | 0.0 | |
| 10/13/2019 | 17:45:00 | 18 | 0.0 | 8.37 | 0.0 | Test lines to 7000 psi =good |
| 10/13/2019 | 17:45:19 | 199 | 2.1 | 12.05 | 0.4 | |
| 10/13/2019 | 17:47:00 | 330 | 2.4 | 11.93 | 4.9 | Start Pumping Spacer |
| 10/13/2019 | 17:47:19 | 409 | 2.4 | 11.88 | 5.6 | |
| 10/13/2019 | 17:49:19 | 287 | 2.3 | 11.90 | 10.8 | |
| 10/13/2019 | 17:51:19 | 114 | 2.2 | 11.96 | 15.4 | |
| 10/13/2019 | 17:53:00 | 496 | 6.3 | 12.09 | 22.6 | mix and pump prime scrub with surfactant @12# |
| 10/13/2019 | 17:53:19 | 498 | 6.3 | 12.07 | 24.6 | |
| 10/13/2019 | 17:55:19 | 430 | 6.2 | 12.09 | 37.1 | |
| 10/13/2019 | 17:57:19 | 405 | 6.3 | 12.00 | 49.6 | |
| 10/13/2019 | 17:59:19 | 347 | 6.0 | 12.08 | 62.1 | |
| 10/13/2019 | 18:01:19 | 358 | 6.2 | 12.14 | 74.0 | |
| 10/13/2019 | 18:03:19 | 316 | 6.2 | 12.10 | 86.4 | |
| 10/13/2019 | 18:04:20 | 312 | 6.3 | 12.13 | 92.8 | End Spacer |
| 10/13/2019 | 18:04:25 | 315 | 6.3 | 12.12 | 93.3 | top of spacer at surface 17 bbls to the pit |
| 10/13/2019 | 18:05:19 | -13 | 0.0 | 13.26 | 96.3 | |
| 10/13/2019 | 18:07:19 | -22 | 0.0 | 12.15 | 0.0 | |
| 10/13/2019 | 18:09:19 | -23 | 0.0 | 12.13 | 0.0 | |
| 10/13/2019 | 18:10:05 | -3 | 0.7 | 12.88 | 1.0 | Start Mixing Lead Slurry |
| 10/13/2019 | 18:11:19 | 530 | 6.2 | 12.52 | 7.2 | |
| 10/13/2019 | 18:13:19 | 925 | 8.0 | 12.49 | 22.9 | |
| 10/13/2019 | 18:15:00 | 893 | 8.0 | 12.48 | 36.3 | Mix and pump 835 sks of lead @12.5# 247 bbls |
| 10/13/2019 | 18:15:19 | 917 | 8.0 | 12.49 | 38.9 | |
| 10/13/2019 | 18:17:19 | 910 | 8.0 | 12.50 | 54.9 | |
| 10/13/2019 | 18:19:19 | 901 | 8.0 | 12.48 | 70.9 | |
| 10/13/2019 | 18:20:00 | 920 | 8.0 | 12.49 | 76.3 | yield=1,66 wr=5.02 |
| 10/13/2019 | 18:21:19 | 910 | 8.0 | 12.50 | 86.9 | |
| 10/13/2019 | 18:23:19 | 592 | 6.2 | 12.47 | 101.5 | |
| 10/13/2019 | 18:25:19 | 575 | 6.2 | 12.48 | 114.1 | |
| 10/13/2019 | 18:27:19 | 981 | 8.0 | 12.57 | 126.6 | |
| 10/13/2019 | 18:29:19 | 976 | 8.0 | 12.57 | 142.6 | |
| 10/13/2019 | 18:31:19 | 959 | 8.0 | 12.55 | 158.7 | |
| 10/13/2019 | 18:33:19 | 935 | 8.0 | 12.52 | 174.7 | |
| 10/13/2019 | 18:35:19 | 917 | 8.0 | 12.46 | 190.7 | |
| 10/13/2019 | 18:37:19 | 929 | 8.0 | 12.51 | 206.7 | |
| 10/13/2019 | 18:39:19 | 896 | 8.0 | 12.46 | 222.7 | |
| 10/13/2019 | 18:40:00 | 928 | 8.0 | 12.49 | 228.2 | top of lead 3100 ft |
| 10/13/2019 | 18:41:19 | 933 | 8.0 | 12.49 | 238.8 | |
| 10/13/2019 | 18:43:19 | -10 | 0.0 | 12.91 | 0.0 | |
| 10/13/2019 | 18:45:19 | -12 | 0.0 | 13.00 | 0.0 | |
| 10/13/2019 | 18:47:19 | -11 | 0.0 | 12.62 | 0.0 | |
| 10/13/2019 | 18:49:19 | -11 | 0.0 | 12.63 | 0.0 | |

| Well | | | Field | | Job Start | Customer | Job Number |
|---------------------|------------------|-----------------------|---------------|--------------|-------------|--|------------|
| HINGLEY 1E-18H-A167 | | | WILDCAT | | Oct/13/2019 | CRESTONE PEAKE | 3070093 |
| Date | Time 24-hr clock | Treating Pressure PSI | Flow Rate B/M | Density LB/G | Volume BBL | Message | |
| 10/13/2019 | 18:52:00 | 157 | 2.1 | 14.76 | 0.8 | End Lead Slurry | |
| 10/13/2019 | 18:53:00 | 376 | 4.4 | 14.51 | 4.7 | Drop Bottom Plug | |
| 10/13/2019 | 18:53:19 | 369 | 4.4 | 14.51 | 6.1 | | |
| 10/13/2019 | 18:55:19 | 911 | 8.0 | 14.54 | 19.6 | | |
| 10/13/2019 | 18:57:19 | 895 | 8.0 | 14.57 | 35.6 | | |
| 10/13/2019 | 18:58:40 | 854 | 8.0 | 14.54 | 46.5 | Start Mixing Tail Slurry | |
| 10/13/2019 | 18:59:19 | 896 | 8.0 | 14.54 | 51.7 | | |
| 10/13/2019 | 18:59:42 | 891 | 8.0 | 14.53 | 54.8 | mix and pump 606 sks of tail @14.5# 146 bbls | |
| 10/13/2019 | 19:01:19 | 815 | 8.0 | 14.40 | 67.7 | | |
| 10/13/2019 | 19:03:19 | 841 | 8.0 | 14.45 | 83.8 | | |
| 10/13/2019 | 19:05:19 | 533 | 6.2 | 14.48 | 98.2 | | |
| 10/13/2019 | 19:07:19 | 576 | 6.2 | 14.60 | 110.6 | | |
| 10/13/2019 | 19:09:19 | 582 | 6.2 | 14.54 | 122.9 | | |
| 10/13/2019 | 19:10:00 | 562 | 6.1 | 14.56 | 127.1 | Yield =1.35 wr=6.64 | |
| 10/13/2019 | 19:11:00 | 563 | 6.2 | 14.59 | 133.2 | End Tail Slurry | |
| 10/13/2019 | 19:11:19 | 586 | 6.2 | 14.60 | 135.2 | | |
| 10/13/2019 | 19:13:19 | 590 | 6.2 | 14.49 | 147.5 | | |
| 10/13/2019 | 19:15:19 | -6 | 0.0 | 11.93 | 0.0 | | |
| 10/13/2019 | 19:17:19 | 46 | 0.9 | 9.59 | 0.3 | | |
| 10/13/2019 | 19:19:19 | 180 | 4.3 | 9.23 | 7.8 | | |
| 10/13/2019 | 19:21:19 | 157 | 4.4 | 8.54 | 15.0 | | |
| 10/13/2019 | 19:23:19 | 161 | 0.0 | 8.37 | 19.4 | | |
| 10/13/2019 | 19:25:19 | -13 | 0.0 | 8.37 | 0.0 | | |
| 10/13/2019 | 19:27:19 | 292 | 8.1 | 8.42 | 6.3 | | |
| 10/13/2019 | 19:29:00 | 273 | 8.1 | 8.37 | 19.9 | top of tail 8600 ft | |
| 10/13/2019 | 19:29:19 | 270 | 8.1 | 8.37 | 22.4 | | |
| 10/13/2019 | 19:31:19 | 294 | 8.1 | 8.40 | 38.6 | | |
| 10/13/2019 | 19:33:00 | 661 | 8.0 | 8.40 | 52.3 | Mix and pump 30 bbls of retarded water | |
| 10/13/2019 | 19:33:19 | 659 | 8.0 | 8.40 | 54.8 | | |
| 10/13/2019 | 19:35:19 | 861 | 8.0 | 8.40 | 70.9 | | |
| 10/13/2019 | 19:37:19 | 1086 | 8.0 | 8.40 | 86.9 | | |
| 10/13/2019 | 19:40:00 | 1416 | 8.0 | 8.40 | 108.4 | pump 247 bbls of treated water | |
| 10/13/2019 | 19:41:19 | 1586 | 8.0 | 8.40 | 118.9 | | |
| 10/13/2019 | 19:43:19 | 1884 | 7.9 | 8.40 | 134.8 | | |
| 10/13/2019 | 19:45:19 | 2103 | 7.9 | 8.40 | 150.7 | | |
| 10/13/2019 | 19:47:19 | 2328 | 7.9 | 8.40 | 166.6 | | |
| 10/13/2019 | 19:49:19 | 2457 | 7.8 | 8.40 | 182.3 | | |
| 10/13/2019 | 19:51:19 | 2491 | 7.8 | 8.40 | 197.9 | | |
| 10/13/2019 | 19:53:19 | 2516 | 7.8 | 8.40 | 213.5 | | |
| 10/13/2019 | 19:55:19 | 2560 | 7.8 | 8.40 | 229.1 | | |
| 10/13/2019 | 19:57:19 | 2570 | 7.8 | 8.40 | 244.6 | | |
| 10/13/2019 | 19:59:19 | 2589 | 7.7 | 8.37 | 260.0 | | |
| 10/13/2019 | 20:01:19 | 2185 | 4.9 | 8.37 | 270.5 | | |
| 10/13/2019 | 20:03:00 | 2670 | 4.8 | 8.37 | 278.7 | got back 17 bbls of spacer to the surface | |
| 10/13/2019 | 20:03:19 | 3220 | 0.0 | 8.37 | 279.4 | | |
| 10/13/2019 | 20:05:19 | 3276 | 0.0 | 8.37 | 0.0 | | |
| 10/13/2019 | 20:07:00 | 3340 | 0.0 | 8.37 | 0.0 | Bump Top Plug | |
| 10/13/2019 | 20:07:19 | 3351 | 0.0 | 8.37 | 0.0 | | |
| 10/13/2019 | 20:09:19 | 1 | 0.0 | 8.37 | 0.0 | | |
| 10/13/2019 | 20:10:00 | 44 | 1.6 | 8.45 | 0.9 | check the float | |
| 10/13/2019 | 20:11:19 | 340 | 6.3 | 8.38 | 7.8 | | |
| 10/13/2019 | 20:13:19 | 17 | 0.3 | 8.39 | 22.2 | | |
| 10/13/2019 | 20:15:19 | -2 | 0.0 | 8.37 | 23.6 | | |
| 10/13/2019 | 20:16:22 | -6 | 0.0 | 8.37 | 23.6 | clean out stack 30 bbls of sugar water | |

| | | | | |
|------------------------------------|-------------------------|---------------------------------|-----------------------------------|------------------------------|
| Well HINGLEY 1E-18H-A167 | Field WILDCAT | Job Start Oct/13/2019 | Customer CRESTONE PEAKE | Job Number 3070093 |
|------------------------------------|-------------------------|---------------------------------|-----------------------------------|------------------------------|

Post Job Summary

| Average Pump Rates, bbl/min | | | | | Volume of Fluid Injected, bbl | | | |
|---|--|----------------------------------|---|---|--|--|-------------------------------|--|
| Slurry 4.7 | N2 | Mud | Maximum Rate 8.2 | Total Slurry 836.7 | Mud 0.0 | Spacer 70.4 | N2 | |
| Treating Pressure Summary, psi | | | | | Breakdown Fluid | | | |
| Maximum 6906 | Final 0 | Average 1059 | Bump Plug to 3500 | Breakdown | Type FreshWater | Volume 277.0 bbl | Density 8.34 lb/gal | |
| Avg. N2 Percent % | Designed Slurry Volume 0.0 bbl | Displacement 271.6 bbl | Mix Water Temp 70 degF | Cement Circulated to Surface? <input type="checkbox"/> | Volume bbl | | | |
| | | | | Washed Thru Perfs <input type="checkbox"/> | To ft | | | |
| Customer or Authorized Representative RYAN BUFORD | | | Schlumberger Supervisor ALBERT SNYDER | | Circulation Lost <input type="checkbox"/> | Job Completed <input checked="" type="checkbox"/> | | |
| | | | | | - | - | | |