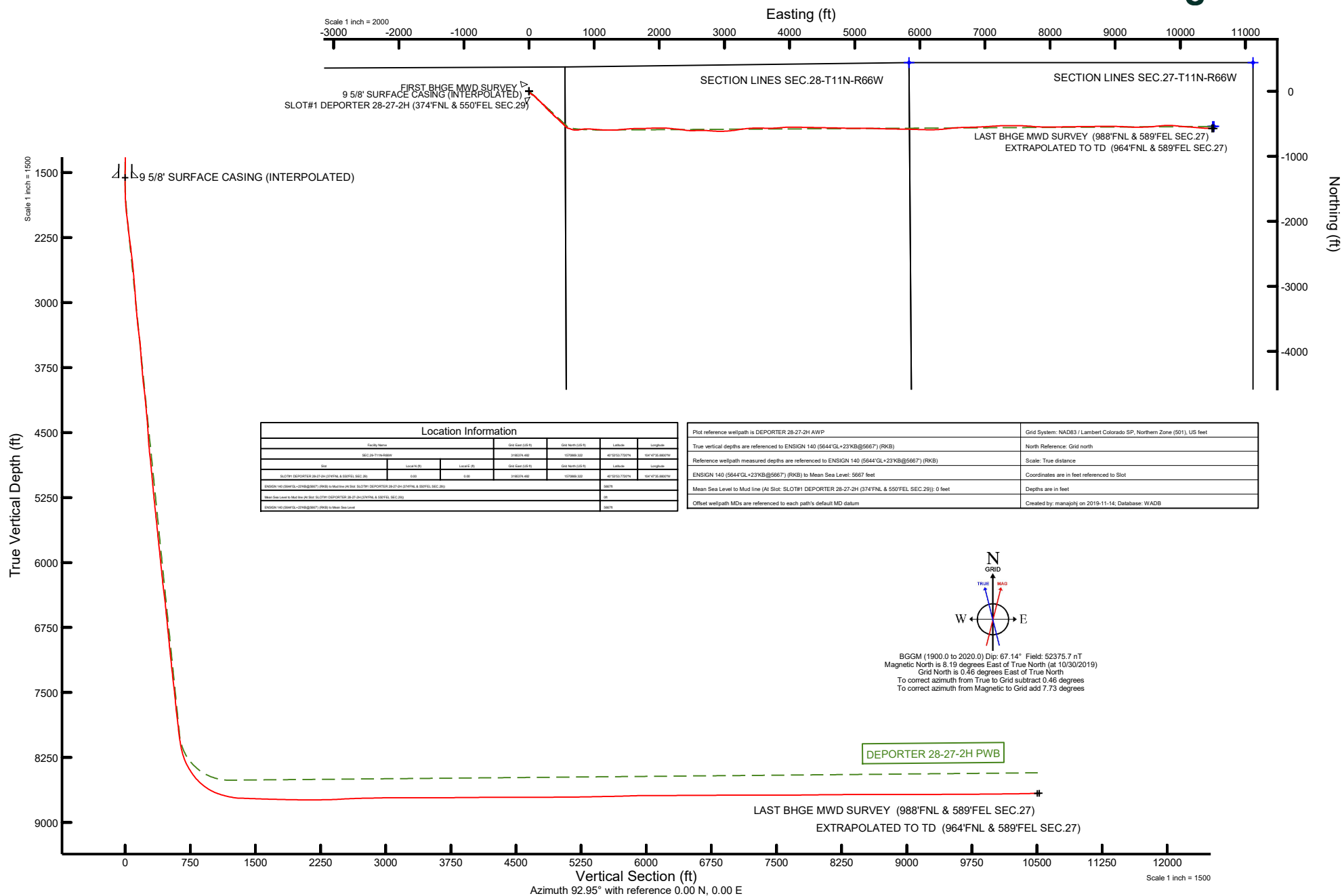


# EDGE ENERGY LLC

Location:	COLORADO	Slot:	SLOT#1 DEPORTER 28-27-2H (374°FNL & 550°FEL SEC.29)
Field:	WELD COUNTY (NAD 83 / GRID)	Well:	DEPORTER 28-27-2H
Facility:	SEC.29-T11N-R66W	Wellbore:	DEPORTER 28-27-2H AWB

Location:	COLORADO	Slot:	SLOT#1 DEPORTER 28-27-2H (374'FNL & 550'FEL SEC.29)
Field:	WELD COUNTY (NAD 83 / GRID)	Well:	DEPORTER 28-27-2H
Facility:	SEC.29-T11N-R66W	Wellbore:	DEPORTER 28-27-2H AWB





# Actual Wellpath Report

DEPORTER 28-27-2H AWP

Page 1 of 8



## REFERENCE WELLPATH IDENTIFICATION

Operator	EDGE ENERGY LLC	Well	DEPORTER 28-27-2H
Field	WELD COUNTY (NAD 83 / GRID)	API/Legal	
Facility	SEC.29-T11N-R66W	Wellbore	DEPORTER 28-27-2H AWB
Slot	SLOT#1 DEPORTER 28-27-2H (374'FNL & 550'FEL SEC.29)		

## REPORT SETUP INFORMATION

Projection System	NAD83 / Lambert Colorado SP, Northern Zone (501), US feet	Software System	WellArchitect® 6.0
North Reference	Grid	User	Manajohj
Scale	1.000021	Report Generated	11/14/2019 at 8:13:26 AM
Convergence at slot	0.46° East	Database	WADB

## WELLPATH LOCATION

	Local coordinates		Grid coordinates		Geographic coordinates	
	North[ft]	East[ft]	Easting[US ft]	Northing[US ft]	Latitude	Longitude
Slot Location	0.00	0.00	3195374.48	1570869.32	40°53'53.7720"N	104°47'35.8800"W
Facility Reference Pt			3195374.48	1570869.32	40°53'53.7720"N	104°47'35.8800"W
Field Reference Pt			3313435.88	1358195.74	40°18'40.3020"N	104°22'33.7476"W

## WELLPATH DATUM

Calculation method	Minimum curvature	ENSIGN 140 (5644'GL+23'KB@5667') (RKB) to Facility Vertical Datum	5667.00ft
Horizontal Reference Pt	Slot	ENSIGN 140 (5644'GL+23'KB@5667') (RKB) to Mean Sea Level	5667.00ft
Vertical Reference Pt	ENSIGN 140 (5644'GL+23'KB@5667') (RKB)	ENSIGN 140 (5644'GL+23'KB@5667') (RKB) to Mud Line at Slot (SLOT#1 DEPORTER 28-27-2H (374'FNL & 550'FEL SEC.29))	5667.00ft
MD Reference Pt	ENSIGN 140 (5644'GL+23'KB@5667') (RKB)	Section Origin	N 0.00, E 0.00 ft
Field Vertical Reference	Mean Sea Level	Section Azimuth	92.95°



# Actual Wellpath Report

DEPORTER 28-27-2H AWP  
Page 2 of 8



## REFERENCE WELLPATH IDENTIFICATION

Operator	EDGE ENERGY LLC	Well	DEPORTER 28-27-2H
Field	WELD COUNTY (NAD 83 / GRID)	API/Legal	
Facility	SEC.29-T11N-R66W	Wellbore	DEPORTER 28-27-2H AWB
Slot	SLOT#1 DEPORTER 28-27-2H (374'FNL & 550'FEL SEC.29)		

## WELLPATH DATA (210 stations) † = interpolated, ‡ = extrapolated station

MD [ft]	Inclination [°]	Azimuth [°]	TVD [ft]	TVDSS [ft]	Vert Sect [ft]	North [ft]	East [ft]	Latitude	Longitude	DLS [°/100ft]	Tooface [°]	Build Rate [°/100ft]	Turn Rate [°/100ft]	Comments
0.00†	0.000	10.110	0.00	-5667.00	0.00	0.00	0.00	40°53'53.7720"N	104°47'35.8800"W	0.00	0.00	0.00	0.00	KB
23.00	0.000	10.110	23.00	-5644.00	0.00	0.00	0.00	40°53'53.7720"N	104°47'35.8800"W	0.00	0.00	0.00	0.00	GL
112.00	0.260	10.110	112.00	-5555.00	0.03	0.20	0.04	40°53'53.7740"N	104°47'35.8795"W	0.29	65.74	0.29	0.00	FIRST BHGE MWD SURVEY
142.00	0.410	40.530	142.00	-5525.00	0.10	0.35	0.12	40°53'53.7754"N	104°47'35.8784"W	0.76	101.50	0.50	101.40	
233.00	0.440	76.090	233.00	-5434.00	0.63	0.68	0.67	40°53'53.7787"N	104°47'35.8712"W	0.29	-36.28	0.03	39.08	
325.00	0.620	64.640	324.99	-5342.01	1.41	0.98	1.46	40°53'53.7815"N	104°47'35.8609"W	0.23	-117.58	0.20	-12.45	
414.00	0.550	34.710	413.99	-5253.01	2.06	1.53	2.14	40°53'53.7870"N	104°47'35.8520"W	0.35	134.56	-0.08	-33.63	
503.00	0.460	47.690	502.99	-5164.01	2.53	2.13	2.65	40°53'53.7928"N	104°47'35.8453"W	0.16	172.87	-0.10	14.58	
593.00	0.180	59.050	592.98	-5074.02	2.91	2.44	3.03	40°53'53.7959"N	104°47'35.8402"W	0.32	-86.89	-0.31	12.62	
682.00	0.220	26.940	681.98	-4985.02	3.09	2.67	3.23	40°53'53.7981"N	104°47'35.8376"W	0.13	-169.27	0.04	-36.08	
771.00	0.140	20.660	770.98	-4896.02	3.19	2.92	3.35	40°53'53.8006"N	104°47'35.8361"W	0.09	-68.37	-0.09	-7.06	
861.00	0.350	334.120	860.98	-4806.02	3.09	3.27	3.27	40°53'53.8041"N	104°47'35.8371"W	0.30	12.75	0.23	-51.71	
951.00	0.410	336.010	950.98	-4716.02	2.82	3.81	3.02	40°53'53.8094"N	104°47'35.8403"W	0.07	-173.48	0.07	2.10	
1040.00	0.060	213.430	1039.98	-4627.02	2.65	4.06	2.86	40°53'53.8119"N	104°47'35.8423"W	0.50	96.31	-0.39	-137.73	
1129.00	0.230	294.710	1128.98	-4538.02	2.46	4.10	2.67	40°53'53.8123"N	104°47'35.8448"W	0.26	-82.13	0.19	91.33	
1219.00	0.370	250.590	1218.98	-4448.02	2.02	4.08	2.23	40°53'53.8121"N	104°47'35.8505"W	0.29	-87.53	0.16	-49.02	
1308.00	0.440	220.210	1307.98	-4359.02	1.55	3.72	1.74	40°53'53.8086"N	104°47'35.8569"W	0.25	113.94	0.08	-34.13	
1397.00	0.520	283.500	1396.97	-4270.03	0.95	3.56	1.13	40°53'53.8070"N	104°47'35.8649"W	0.57	-110.21	0.09	71.11	
1502.00	0.490	268.480	1501.97	-4165.03	0.03	3.65	0.22	40°53'53.8081"N	104°47'35.8768"W	0.13	64.14	-0.03	-14.30	
1558.00†	0.656	290.374	1557.97	-4109.03	-0.52	3.76	-0.32	40°53'53.8092"N	104°47'35.8838"W	0.49	42.25	0.30	39.10	5/8" SURFACE CASING (INTERPOLATED)
1570.00	0.700	293.580	1569.97	-4097.03	-0.65	3.81	-0.45	40°53'53.8097"N	104°47'35.8855"W	0.49	-134.37	0.37	26.72	
1660.00	1.930	174.230	1659.95	-4007.05	-0.93	2.53	-0.81	40°53'53.7970"N	104°47'35.8902"W	2.62	-19.06	1.37	-132.61	
1749.00	4.940	162.490	1748.78	-3918.22	0.63	-2.62	0.50	40°53'53.7461"N	104°47'35.8738"W	3.46	-32.02	3.38	-13.19	
1838.00	6.830	153.000	1837.31	-3829.69	4.61	-10.99	4.05	40°53'53.6631"N	104°47'35.8283"W	2.38	-52.51	2.12	-10.66	
1928.00	7.950	143.430	1926.56	-3740.44	11.25	-20.76	10.19	40°53'53.5661"N	104°47'35.7494"W	1.85	-57.18	1.24	-10.63	
2017.00	8.900	134.860	2014.61	-3652.39	20.29	-30.56	18.74	40°53'53.4686"N	104°47'35.6391"W	1.77	-116.03	1.07	-9.63	
2107.00	8.420	127.050	2103.58	-3563.42	30.93	-39.44	28.93	40°53'53.3800"N	104°47'35.5073"W	1.41	151.60	-0.53	-8.68	
2196.00	7.800	129.550	2191.69	-3475.31	41.17	-47.21	38.79	40°53'53.3025"N	104°47'35.3798"W	0.80	-69.35	-0.70	2.81	
2285.00	8.780	116.370	2279.77	-3387.23	52.25	-54.08	49.54	40°53'53.2338"N	104°47'35.2406"W	2.40	-137.50	1.10	-14.81	
2374.00	7.400	105.570	2367.89	-3299.11	64.08	-58.63	61.14	40°53'53.1879"N	104°47'35.0899"W	2.30	103.46	-1.55	-12.13	
2463.00	7.200	121.150	2456.17	-3210.83	74.59	-63.06	71.44	40°53'53.1434"N	104°47'34.9563"W	2.23	72.26	-0.22	17.51	
2552.00	7.380	125.110	2544.45	-3122.55	84.34	-69.23	80.89	40°53'53.0816"N	104°47'34.8339"W	0.60	108.34	0.20	4.45	
2641.00	7.050	136.960	2632.75	-3034.25	93.11	-76.51	89.29	40°53'53.0090"N	104°47'34.7252"W	1.71	178.67	-0.37	13.31	
2731.00	6.170	137.150	2722.16	-2944.84	100.55	-84.09	96.35	40°53'52.9336"N	104°47'34.6341"W	0.98	20.73	-0.98	0.21	
2821.00	7.050	139.840	2811.56	-2855.44	107.79	-91.86	103.20	40°53'52.8563"N	104°47'34.5457"W	1.04	-172.78	0.98	2.99	
2909.00	5.660	138.050	2899.01	-2767.99	114.55	-99.21	109.59	40°53'52.7831"N	104°47'34.4633"W	1.60	76.98	-1.58	-2.03	
2999.00	5.910	146.130	2988.56	-2678.44	120.46	-106.36	115.14	40°53'52.7120"N	104°47'34.3918"W	0.95	-38.85	0.28	8.98	
3089.00	7.720	135.950	3077.92	-2589.08	127.65	-114.55	121.92	40°53'52.6305"N	104°47'34.3043"W	2.41	93.14	2.01	-11.31	
3178.00	7.710	140.300	3166.12	-2500.88	136.07	-123.44	129.89	40°53'52.5421"N	104°47'34.2014"W	0.66	-19.50	-0.01	4.89	
3267.00	8.660	138.080	3254.21	-2412.79	144.84	-133.02	138.18	40°53'52.4468"N	104°47'34.0945"W	1.12	-91.57	1.07	-2.49	
3356.00	8.940	121.920	3342.17	-2324.83	155.62	-141.67	148.53	40°53'52.3606"N	104°47'33.9606"W	2.79	-170.61	0.31	-18.16	
3446.00	7.270	119.730	3431.27	-2235.73	166.82	-148.19	159.41	40°53'52.2953"N	104°47'33.8196"W	1.89	141.66	-1.86	-2.43	
3535.00	5.730	133.310	3519.70	-2147.30	175.24	-154.03	167.53	40°53'52.2369"N	104°47'33.7145"W	2.43	89.64	-1.73	15.26	
3625.00	5.890	146.380	3609.24	-2057.76	181.41	-160.96	173.36	40°53'52.1680"N	104°47'33.6393"W	1.48	-78.37	0.18	14.52	
3714.00	6.620	128.580	3697.72	-1969.28	188.30	-167.96	179.90	40°53'52.0983"N	104°47'33.5549"W	2.32	82.06	0.82	-20.00	

## REFERENCE WELLPATH IDENTIFICATION

Operator	EDGE ENERGY LLC	Well	DEPORTER 28-27-2H
Field	WELD COUNTY (NAD 83 / GRID)	API/Legal	
Facility	SEC.29-T11N-R66W	Wellbore	DEPORTER 28-27-2H AWB
Slot	SLOT#1 DEPORTER 28-27-2H (374'FNL & 550'FEL SEC.29)		

## WELLPATH DATA (210 stations)

MD [ft]	Inclination [°]	Azimuth [°]	TVD [ft]	TVDSS [ft]	Vert Sect [ft]	North [ft]	East [ft]	Latitude	Longitude	DLS [°/100ft]	Tooface [°]	Build Rate [°/100ft]	Turn Rate [°/100ft]	Comments
3803.00	7.000	141.190	3786.10	-1880.90	196.09	-175.39	187.31	40°53'52.0244"N	104°47'33.4592"W	1.73	-25.31	0.43	14.17	
3893.00	7.910	138.100	3875.34	-1791.66	204.11	-184.27	194.88	40°53'51.9360"N	104°47'33.3615"W	1.10	-46.26	1.01	-3.43	
3982.00	9.110	130.660	3963.36	-1703.64	214.00	-193.42	204.32	40°53'51.8448"N	104°47'33.2396"W	1.83	-174.23	1.35	-8.36	
4071.00	7.660	129.560	4051.41	-1615.59	224.34	-201.79	214.24	40°53'51.7614"N	104°47'33.1113"W	1.64	112.80	-1.63	-1.24	
4161.00	7.260	138.940	4140.65	-1526.35	233.10	-209.89	222.60	40°53'51.6806"N	104°47'33.0033"W	1.42	-111.15	-0.44	10.42	
4250.00	6.880	128.010	4228.97	-1438.03	241.37	-217.42	230.49	40°53'51.6056"N	104°47'32.9013"W	1.57	136.18	-0.43	-12.28	
4340.00	6.390	132.400	4318.37	-1348.63	249.65	-224.11	238.44	40°53'51.5389"N	104°47'32.7985"W	0.78	109.77	-0.54	4.88	
4429.00	6.250	136.360	4406.83	-1260.17	257.00	-230.96	245.44	40°53'51.4707"N	104°47'32.7080"W	0.51	-175.76	-0.16	4.45	
4519.00	4.840	135.120	4496.41	-1170.59	263.37	-237.20	251.50	40°53'51.4086"N	104°47'32.6298"W	1.57	53.80	-1.57	-1.38	
4608.00	7.280	156.530	4584.91	-1082.09	268.66	-245.03	256.39	40°53'51.3308"N	104°47'32.5668"W	3.69	-54.01	2.74	24.06	
4697.00	8.510	146.280	4673.07	-993.93	275.10	-255.68	262.30	40°53'51.2251"N	104°47'32.4911"W	2.10	-85.33	1.38	-11.52	
4786.00	9.090	129.760	4761.04	-905.96	284.67	-265.66	271.36	40°53'51.1258"N	104°47'32.3741"W	2.90	157.75	0.65	-18.56	
4876.00	6.690	138.490	4850.18	-816.82	294.03	-274.13	280.30	40°53'51.0414"N	104°47'32.2586"W	2.97	-43.53	-2.67	9.70	
4965.00	7.380	133.580	4938.51	-728.49	302.00	-281.95	287.88	40°53'50.9635"N	104°47'32.1607"W	1.03	-130.71	0.78	-5.52	
5054.00	6.920	128.920	5026.82	-640.18	310.68	-289.26	296.19	40°53'50.8906"N	104°47'32.0533"W	0.83	82.75	-0.52	-5.24	
5144.00	7.120	137.090	5116.15	-550.85	319.07	-296.76	304.20	40°53'50.8159"N	104°47'31.9497"W	1.13	-94.58	0.22	9.08	
5234.00	7.100	134.100	5205.46	-461.54	327.26	-304.71	312.00	40°53'50.7367"N	104°47'31.8490"W	0.41	-83.79	-0.02	-3.32	
5323.00	7.160	130.630	5293.77	-373.23	335.79	-312.15	320.16	40°53'50.6626"N	104°47'31.7436"W	0.49	8.57	0.07	-3.90	
5413.00	7.790	131.330	5383.01	-283.99	345.01	-319.83	328.99	40°53'50.5860"N	104°47'31.6293"W	0.71	161.11	0.70	0.78	
5502.00	7.700	131.560	5471.19	-195.81	354.40	-327.77	337.98	40°53'50.5068"N	104°47'31.5130"W	0.11	96.75	-0.10	0.26	
5592.00	7.680	132.970	5560.38	-106.62	363.72	-335.87	346.90	40°53'50.4261"N	104°47'31.3978"W	0.21	-64.24	-0.02	1.57	
5681.00	7.730	132.210	5648.58	-18.42	372.91	-343.94	355.68	40°53'50.3456"N	104°47'31.2843"W	0.13	95.04	0.06	-0.85	
5771.00	7.700	137.460	5737.77	70.77	381.89	-352.45	364.24	40°53'50.2609"N	104°47'31.1737"W	0.78	15.39	-0.03	5.83	
5860.00	8.600	139.110	5825.87	158.87	390.75	-361.88	372.63	40°53'50.1671"N	104°47'31.0655"W	1.04	-102.88	1.01	1.85	
5949.00	8.460	133.930	5913.88	246.88	400.30	-371.45	381.70	40°53'50.0718"N	104°47'30.9484"W	0.88	164.96	-0.16	-5.82	
6039.00	7.340	136.300	6003.03	336.03	409.48	-380.20	390.44	40°53'49.9847"N	104°47'30.8355"W	1.30	-54.08	-1.24	2.63	
6128.00	7.710	132.650	6091.26	424.26	418.21	-388.35	398.76	40°53'49.9034"N	104°47'30.7280"W	0.68	145.65	0.42	-4.10	
6218.00	7.540	133.540	6180.47	513.47	427.34	-396.51	407.48	40°53'49.8222"N	104°47'30.6153"W	0.23	-22.93	-0.19	0.99	
6307.00	9.080	129.470	6268.53	601.53	437.42	-405.00	417.13	40°53'49.7375"N	104°47'30.4904"W	1.85	-126.74	1.73	-4.57	
6397.00	8.700	125.960	6357.45	690.45	448.83	-413.51	428.12	40°53'49.6526"N	104°47'30.3482"W	0.74	144.22	-0.42	-3.90	
6486.00	7.350	133.990	6445.58	778.58	458.77	-421.42	437.67	40°53'49.5737"N	104°47'30.2247"W	1.97	60.59	-1.52	9.02	
6576.00	7.670	138.000	6534.81	867.81	467.36	-429.88	445.83	40°53'49.4894"N	104°47'30.1194"W	0.68	-100.21	0.36	4.46	
6665.00	7.550	126.360	6623.03	956.03	476.43	-437.76	454.51	40°53'49.4109"N	104°47'30.0071"W	1.73	100.18	-0.13	-13.08	
6754.00	7.450	140.790	6711.28	1044.28	485.19	-445.70	462.87	40°53'49.3318"N	104°47'29.8991"W	2.11	-54.47	-0.11	16.21	
6844.00	7.690	138.350	6800.49	1133.49	493.33	-454.72	470.56	40°53'49.2421"N	104°47'29.7999"W	0.45	-104.54	0.27	-2.71	
6933.00	7.450	126.310	6888.72	1221.72	502.33	-462.58	479.17	40°53'49.1637"N	104°47'29.6887"W	1.80	89.06	-0.27	-13.53	
7023.00	7.700	140.120	6977.94	1310.94	511.31	-470.67	487.74	40°53'49.0831"N	104°47'29.5779"W	2.04	-80.51	0.28	15.34	
7112.00	8.100	129.210	7066.10	1399.10	520.42	-479.21	496.42	40°53'48.9981"N	104°47'29.4658"W	1.74	130.58	0.45	-12.26	
7201.00	7.670	133.130	7154.26	1487.26	530.01	-487.23	505.61	40°53'48.9181"N	104°47'29.3469"W	0.77	-161.88	-0.48	4.40	
7291.00	7.460	132.600	7243.48	1576.48	539.10	-495.29	514.30	40°53'48.8377"N	104°47'29.2347"W	0.25	-28.41	-0.23	-0.59	
7380.00	8.170	129.930	7331.65	1664.65	548.60	-503.26	523.40	40°53'48.7583"N	104°47'29.1170"W	0.90	47.58	0.80	-3.00	
7469.00	9.230	136.740	7419.63	1752.63	558.80	-512.52	533.14	40°53'48.6660"N	104°47'28.9911"W	1.66	164.66	1.19	7.65	
7558.00	8.640	137.820	7507.55	1840.55	568.69	-522.67	542.52	40°53'48.5650"N	104°47'28.8700"W	0.69	132.51	-0.66	1.21	
7648.00	7.930	143.780	7596.61	1929.61	577.41	-532.69	550.73	40°53'48.4653"N	104°47'28.7642"W	1.24	-103.60	-0.79	6.62	
7738.00	7.720	126.610	7685.79	2018.79	586.36	-541.30	559.25	40°53'48.3796"N	104°47'28.6541"W	2.60	21.32	-0.23	-19.08	

## REFERENCE WELLPATH IDENTIFICATION

Operator	EDGE ENERGY LLC	Well	DEPORTER 28-27-2H
Field	WELD COUNTY (NAD 83 / GRID)	API/Legal	
Facility	SEC.29-T11N-R66W	Wellbore	DEPORTER 28-27-2H AWB
Slot	SLOT#1 DEPORTER 28-27-2H (374'FNL & 550'FEL SEC.29)		

## WELLPATH DATA (210 stations)

MD [ft]	Inclination [°]	Azimuth [°]	TVD [ft]	TVDSS [ft]	Vert Sect [ft]	North [ft]	East [ft]	Latitude	Longitude	DLS [°/100ft]	Toolface [°]	Build Rate [°/100ft]	Turn Rate [°/100ft]	Comments
7827.00	8.010	127.420	7773.95	2106.95	596.45	-548.64	568.97	40°53'48.3063"N	104°47'28.5283"W	0.35	85.45	0.33	0.91	
7916.00	8.030	128.960	7862.08	2195.08	606.59	-556.31	578.73	40°53'48.2297"N	104°47'28.4020"W	0.24	-134.82	0.02	1.73	
8006.00	7.900	128.000	7951.21	2284.21	616.74	-564.07	588.49	40°53'48.1523"N	104°47'28.2757"W	0.21	-102.17	-0.14	-1.07	
8095.00	7.980	101.000	8039.39	2372.39	627.86	-569.02	599.38	40°53'48.1025"N	104°47'28.1344"W	4.15	-4.00	0.09	-30.34	
8184.00	10.940	99.910	8127.17	2460.17	642.37	-571.65	613.77	40°53'48.0754"N	104°47'27.9474"W	3.33	34.63	3.33	-1.22	
8274.00	17.250	113.600	8214.44	2547.44	663.36	-578.47	634.43	40°53'48.0064"N	104°47'27.6790"W	7.88	-19.13	7.01	15.21	
8363.00	24.320	107.750	8297.60	2630.60	693.47	-589.36	664.02	40°53'47.8965"N	104°47'27.2948"W	8.27	-52.01	7.94	-6.57	
8452.00	30.420	94.110	8376.68	2709.68	733.79	-596.58	704.03	40°53'47.8220"N	104°47'26.7747"W	9.79	-50.65	6.85	-15.33	
8542.00	37.060	81.960	8451.56	2784.56	783.30	-594.41	753.72	40°53'47.8395"N	104°47'26.1274"W	10.49	-8.37	7.38	-13.50	
8631.00	44.310	80.440	8519.01	2852.01	840.05	-585.49	811.00	40°53'47.9231"N	104°47'25.3806"W	8.22	38.46	8.15	-1.71	
8720.00	52.550	88.370	8578.06	2911.06	905.79	-579.30	877.14	40°53'47.9790"N	104°47'24.5187"W	11.40	31.47	9.26	8.91	
8810.00	60.800	94.040	8627.49	2960.49	980.85	-581.06	952.21	40°53'47.9557"N	104°47'23.5414"W	10.57	6.34	9.17	6.30	
8899.00	69.430	95.060	8664.91	2997.91	1061.47	-587.48	1032.61	40°53'47.8859"N	104°47'22.4952"W	9.75	-14.16	9.70	1.15	
8989.00	75.470	93.490	8692.04	3025.04	1147.22	-593.85	1118.14	40°53'47.8161"N	104°47'21.3821"W	6.91	-30.02	6.71	-1.74	
9078.00	80.110	90.780	8710.86	3043.86	1234.16	-597.08	1205.04	40°53'47.7774"N	104°47'20.2510"W	6.00	-12.38	5.21	-3.04	
9168.00	88.620	88.920	8719.69	3052.69	1323.51	-596.83	1294.52	40°53'47.7728"N	104°47'19.0859"W	9.68	-102.27	9.46	-2.07	
9257.00	87.600	84.200	8722.63	3055.63	1411.88	-591.50	1383.28	40°53'47.8184"N	104°47'17.9295"W	5.42	48.13	-1.15	-5.30	
9348.00	88.030	84.680	8726.10	3059.10	1501.82	-582.69	1473.79	40°53'47.8983"N	104°47'16.7501"W	0.71	91.64	0.47	0.53	
9438.00	87.970	86.830	8729.24	3062.24	1591.05	-576.03	1563.48	40°53'47.9570"N	104°47'15.5815"W	2.39	78.12	-0.07	2.39	
9527.00	88.580	89.720	8731.92	3064.92	1679.70	-573.35	1652.39	40°53'47.9764"N	104°47'14.4235"W	3.32	-75.26	0.69	3.25	
9617.00	88.680	89.340	8734.07	3067.07	1769.52	-572.61	1742.36	40°53'47.9765"N	104°47'13.2519"W	0.44	-96.63	0.11	-0.42	
9706.00	88.400	86.920	8736.34	3069.34	1858.17	-569.71	1831.28	40°53'47.9981"N	104°47'12.0938"W	2.74	56.78	-0.31	-2.72	
9795.00	89.350	88.370	8738.08	3071.08	1946.76	-566.05	1920.18	40°53'48.0272"N	104°47'10.9358"W	1.95	74.12	1.07	1.63	
9885.00	89.720	89.670	8738.81	3071.81	2036.55	-564.51	2010.16	40°53'48.0352"N	104°47'9.7639"W	1.50	86.62	0.41	1.44	
9975.00	89.910	92.880	8739.11	3072.11	2126.50	-566.52	2100.13	40°53'48.0083"N	104°47'8.5927"W	3.57	84.42	0.21	3.57	
10064.00	90.280	96.670	8738.96	3071.96	2215.44	-573.92	2188.80	40°53'47.9280"N	104°47'7.4388"W	4.28	-68.02	0.42	4.26	
10154.00	90.990	94.910	8737.96	3070.96	2305.31	-583.00	2278.34	40°53'47.8312"N	104°47'6.2740"W	2.11	80.89	0.79	-1.96	
10243.00	91.630	98.920	8735.92	3068.92	2394.06	-593.71	2366.65	40°53'47.7184"N	104°47'5.1252"W	4.56	-64.14	0.72	4.51	
10332.00	94.030	93.940	8731.53	3064.53	2482.75	-603.67	2454.94	40°53'47.6130"N	104°47'3.9765"W	6.20	-101.06	2.70	-5.60	
10421.00	92.740	87.450	8726.27	3059.27	2571.48	-604.74	2543.73	40°53'47.5953"N	104°47'2.8205"W	7.42	110.07	-1.45	-7.29	
10510.00	91.880	89.800	8722.68	3055.68	2660.15	-602.61	2632.63	40°53'47.6092"N	104°47'1.6628"W	2.81	110.48	-0.97	2.64	
10599.00	91.020	92.100	8720.43	3053.43	2749.06	-604.08	2721.58	40°53'47.5876"N	104°47'0.5047"W	2.76	91.25	-0.97	2.58	
10689.00	90.950	95.230	8718.88	3051.88	2839.03	-609.84	2811.37	40°53'47.5236"N	104°46'59.3361"W	3.48	-76.10	-0.08	3.48	
10778.00	91.720	92.110	8716.81	3049.81	2927.98	-615.53	2900.15	40°53'47.4602"N	104°46'58.1806"W	3.61	-98.26	0.87	-3.51	
10868.00	90.980	87.050	8714.68	3047.68	3017.77	-614.87	2990.10	40°53'47.4595"N	104°46'57.0094"W	5.68	-116.03	-0.82	-5.62	
10957.00	89.910	84.860	8713.99	3046.99	3106.10	-608.59	3078.87	40°53'47.5145"N	104°46'55.8529"W	2.74	-86.45	-1.20	-2.46	
11047.00	90.120	81.480	8713.97	3046.97	3194.78	-597.89	3168.21	40°53'47.6131"N	104°46'54.6883"W	3.76	-156.98	0.23	-3.76	
11136.00	89.720	81.310	8714.09	3047.09	3281.98	-584.57	3256.21	40°53'47.7376"N	104°46'53.5411"W	0.49	87.43	-0.45	-0.19	
11226.00	89.880	84.860	8714.41	3047.41	3370.63	-573.74	3345.54	40°53'47.8375"N	104°46'52.3768"W	3.95	94.13	0.18	3.94	
11315.00	89.720	87.080	8714.72	3047.72	3458.97	-567.49	3434.32	40°53'47.8922"N	104°46'51.2202"W	2.50	90.48	-0.18	2.49	
11405.00	89.690	90.740	8715.18	3048.18	3548.73	-565.77	3524.28	40°53'47.9019"N	104°46'50.0485"W	4.07	81.42	-0.03	4.07	
11494.00	89.850	91.800	8715.54	3048.54	3637.68	-567.75	3613.26	40°53'47.8752"N	104°46'48.8902"W	1.20	-58.42	0.18	1.19	
11583.00	91.110	89.750	8714.79	3047.79	3726.61	-568.95	3702.24	40°53'47.8562"N	104°46'47.7317"W	2.70	-93.67	1.42	-2.30	
11673.00	90.860	85.890	8713.25	3046.25	3816.22	-565.53	3792.15	40°53'47.8828"N	104°46'46.5606"W	4.30	-116.83	-0.28	-4.29	
11762.00	90.430	85.040	8712.24	3045.24	3904.46	-558.49	3880.86	40°53'47.9452"N	104°46'45.4047"W	1.07	89.40	-0.48	-0.96	

REFERENCE WELLPATH IDENTIFICATION				
Operator	EDGE ENERGY LLC		Well	DEPORTER 28-27-2H
Field	WELD COUNTY (NAD 83 / GRID)		API/Legal	
Facility	SEC.29-T11N-R66W		Wellbore	DEPORTER 28-27-2H AWB
Slot	SLOT#1 DEPORTER 28-27-2H (374'FNL & 550'FEL SEC.29)			

WELLPATH DATA (210 stations)														
MD [ft]	Inclination [°]	Azimuth [°]	TVD [ft]	TVDSS [ft]	Vert Sect [ft]	North [ft]	East [ft]	Latitude	Longitude	DLS [°/100ft]	Toolface [°]	Build Rate [°/100ft]	Turn Rate [°/100ft]	Comments
11852.00	90.460	87.950	8711.54	3044.54	3993.87	-552.99	3970.68	40°53'47.9924"N	104°46'44.2346"W	3.23	91.31	0.03	3.23	
11941.00	90.400	90.560	8710.88	3043.88	4082.68	-551.83	4059.66	40°53'47.9966"N	104°46'43.0758"W	2.93	101.82	-0.07	2.93	
12030.00	90.220	91.420	8710.40	3043.40	4171.62	-553.37	4148.65	40°53'47.9743"N	104°46'41.9173"W	0.99	-103.78	-0.20	0.97	
12120.00	90.090	90.890	8710.15	3043.15	4261.58	-555.19	4238.63	40°53'47.9491"N	104°46'40.7458"W	0.61	95.19	-0.14	-0.59	
12209.00	90.060	91.220	8710.04	3043.04	4350.53	-556.82	4327.61	40°53'47.9258"N	104°46'39.5873"W	0.37	-78.69	-0.03	0.37	
12298.00	90.090	91.070	8709.92	3042.92	4439.49	-558.60	4416.59	40°53'47.9010"N	104°46'38.4289"W	0.17	-32.28	0.03	-0.17	
12388.00	90.280	90.950	8709.63	3042.63	4529.43	-560.19	4506.58	40°53'47.8781"N	104°46'37.2573"W	0.25	-135.00	0.21	-0.13	
12477.00	90.180	90.850	8709.27	3042.27	4618.38	-561.59	4595.57	40°53'47.8571"N	104°46'36.0988"W	0.16	78.02	-0.11	-0.11	
12566.00	90.250	91.180	8708.94	3041.94	4707.32	-563.16	4684.55	40°53'47.8344"N	104°46'34.9402"W	0.38	117.10	0.08	0.37	
12656.00	90.030	91.610	8708.72	3041.72	4797.29	-565.35	4774.53	40°53'47.8055"N	104°46'33.7689"W	0.54	65.77	-0.24	0.48	
12745.00	90.120	91.810	8708.60	3041.60	4886.27	-568.01	4863.49	40°53'47.7721"N	104°46'32.6108"W	0.25	-76.88	0.10	0.22	
12834.00	90.430	90.480	8708.17	3041.17	4975.22	-569.79	4952.47	40°53'47.7473"N	104°46'31.4524"W	1.53	-87.79	0.35	-1.49	
12923.00	90.460	89.700	8707.48	3040.48	5064.11	-569.93	5041.46	40°53'47.7387"N	104°46'30.2936"W	0.88	-94.29	0.03	-0.88	
13013.00	90.430	89.300	8706.78	3039.78	5153.94	-569.14	5131.46	40°53'47.7392"N	104°46'29.1217"W	0.45	70.31	-0.03	-0.44	
13103.00	91.020	90.950	8705.64	3038.64	5243.82	-569.34	5221.44	40°53'47.7300"N	104°46'27.9500"W	1.95	89.98	0.66	1.83	
13192.00	91.020	92.710	8704.06	3037.06	5332.79	-572.18	5310.38	40°53'47.6947"N	104°46'26.7922"W	1.98	-87.73	0.00	1.98	
13282.00	91.050	91.950	8702.43	3035.43	5422.77	-575.84	5400.29	40°53'47.6513"N	104°46'25.6219"W	0.84	-82.74	0.03	-0.84	
13371.00	91.200	90.770	8700.69	3033.69	5511.71	-577.95	5489.25	40°53'47.6233"N	104°46'24.4638"W	1.34	138.58	0.17	-1.33	
13460.00	90.860	91.070	8699.09	3032.09	5600.64	-579.38	5578.22	40°53'47.6019"N	104°46'23.3054"W	0.51	10.81	-0.38	0.34	
13550.00	91.750	91.240	8697.04	3030.04	5690.58	-581.19	5668.18	40°53'47.5767"N	104°46'22.1343"W	1.01	-122.28	0.99	0.19	
13639.00	91.510	90.860	8694.51	3027.51	5779.49	-582.82	5757.13	40°53'47.5534"N	104°46'20.9762"W	0.50	6.20	-0.27	-0.43	
13729.00	91.970	90.910	8691.77	3024.77	5869.39	-584.21	5847.08	40°53'47.5324"N	104°46'19.8052"W	0.51	151.79	0.51	0.06	
13818.00	90.180	91.870	8690.10	3023.10	5958.34	-586.37	5936.03	40°53'47.5038"N	104°46'18.6471"W	2.28	-13.24	-2.01	1.08	
13907.00	90.520	91.790	8689.56	3022.56	6047.32	-589.21	6024.98	40°53'47.4685"N	104°46'17.4892"W	0.39	-148.06	0.38	-0.09	
13997.00	89.750	91.310	8689.35	3022.35	6137.29	-591.65	6114.95	40°53'47.4372"N	104°46'16.3180"W	1.01	-69.89	-0.86	-0.53	
14086.00	90.680	88.770	8689.01	3022.01	6226.17	-591.71	6203.94	40°53'47.4293"N	104°46'15.1592"W	3.04	-105.08	1.04	-2.85	
14175.00	90.060	86.470	8688.44	3021.44	6314.77	-588.02	6292.85	40°53'47.4586"N	104°46'14.0010"W	2.68	-91.41	-0.70	-2.58	
14264.00	90.000	84.040	8688.39	3021.39	6402.97	-580.65	6381.54	40°53'47.5242"N	104°46'12.8454"W	2.73	-90.00	-0.07	-2.73	
14354.00	90.000	82.980	8688.39	3021.39	6491.75	-570.48	6470.96	40°53'47.6174"N	104°46'11.6800"W	1.18	82.92	0.00	-1.18	
14443.00	90.340	85.720	8688.13	3021.13	6579.74	-561.72	6559.52	40°53'47.6968"N	104°46'10.5259"W	3.10	86.95	0.38	3.08	
14533.00	90.490	88.540	8687.48	3020.48	6669.26	-557.21	6649.40	40°53'47.7340"N	104°46'9.3551"W	3.14	22.75	0.17	3.13	
14622.00	90.800	88.670	8686.47	3019.47	6758.00	-555.05	6738.37	40°53'47.7481"N	104°46'8.1964"W	0.38	-115.50	0.35	0.15	
14711.00	90.490	88.020	8685.47	3018.47	6846.71	-552.48	6827.32	40°53'47.7663"N	104°46'7.0379"W	0.81	-129.61	-0.35	-0.73	
14801.00	90.250	87.730	8684.89	3017.89	6936.35	-549.14	6917.26	40°53'47.7919"N	104°46'5.8664"W	0.42	-90.00	-0.27	-0.32	
14890.00	90.250	86.450	8684.50	3017.50	7024.88	-544.62	7006.14	40°53'47.8293"N	104°46'4.7086"W	1.44	-170.07	0.00	-1.44	
14980.00	89.850	86.380	8684.42	3017.42	7114.30	-538.99	7095.97	40°53'47.8776"N	104°46'3.5384"W	0.45	-81.03	-0.44	-0.08	
15069.00	89.910	86.000	8684.61	3017.61	7202.68	-533.08	7184.77	40°53'47.9288"N	104°46'2.3814"W	0.43	95.37	0.07	-0.43	
15159.00	89.690	88.340	8684.92	3017.92	7292.22	-528.64	7274.65	40°53'47.9653"N	104°46'1.2106"W	2.61	90.01	-0.24	2.60	
15249.00	89.690	90.480	8685.41	3018.41	7382.04	-527.71	7364.64	40°53'47.9671"N	104°46'0.0387"W	2.38	35.97	0.00	2.38	
15338.00	90.310	90.930	8685.41	3018.41	7470.97	-528.81	7453.63	40°53'47.9490"N	104°45'58.8801"W	0.86	-68.20	0.70	0.51	
15427.00	90.370	90.780	8684.88	3017.88	7559.91	-530.13	7542.62	40°53'47.9286"N	104°45'57.7215"W	0.18	96.34	0.07	-0.17	
15517.00	90.150	92.760	8684.47	3017.47	7649.88	-532.91	7632.57	40°53'47.8938"N	104°45'56.5505"W	2.21	81.79	-0.24	2.20	
15606.00	90.620	96.020	8683.88	3016.88	7738.84	-539.72	7721.30	40°53'47.8193"N	104°45'55.3960"W	3.70	-88.51	0.53	3.66	
15696.00	90.710	92.510	8682.83	3015.83	7828.80	-546.42	7811.03	40°53'47.7458"N	104°45'54.2283"W	3.90	-89.99	0.10	-3.90	
15784.00	90.710	91.510	8681.74	3014.74	7916.78	-549.50	7898.97	40°53'47.7081"N	104°45'53.0836"W	1.14	-92.52	0.00	-1.14	

REFERENCE WELLPATH IDENTIFICATION				
Operator	EDGE ENERGY LLC		Well	DEPORTER 28-27-2H
Field	WELD COUNTY (NAD 83 / GRID)		API/Legal	
Facility	SEC.29-T11N-R66W		Wellbore	DEPORTER 28-27-2H AWB
Slot	SLOT#1 DEPORTER 28-27-2H (374'FNL & 550'FEL SEC.29)			

WELLPATH DATA (210 stations) † = interpolated, ‡ = extrapolated station														
MD [ft]	Inclination [°]	Azimuth [°]	TVD [ft]	TVDSS [ft]	Vert Sect [ft]	North [ft]	East [ft]	Latitude	Longitude	DLS [°/100ft]	Tooface [°]	Build Rate [°/100ft]	Turn Rate [°/100ft]	Comments
15874.00	90.650	90.150	8680.67	3013.67	8006.71	-550.81	7988.95	40°53'47.6878"N	104°45'51.9120"W	1.51	-99.09	-0.07	-1.51	
15963.00	90.490	89.150	8679.79	3012.79	8095.55	-550.26	8077.94	40°53'47.6859"N	104°45'50.7532"W	1.14	-94.51	-0.18	-1.12	
16052.00	90.430	88.390	8679.07	3012.07	8184.31	-548.35	8166.92	40°53'47.6975"N	104°45'49.5944"W	0.86	77.47	-0.07	-0.85	
16142.00	90.490	88.660	8678.35	3011.35	8274.04	-546.04	8256.88	40°53'47.7130"N	104°45'48.4227"W	0.31	88.33	0.07	0.30	
16231.00	90.520	89.690	8677.57	3010.57	8362.85	-544.75	8345.87	40°53'47.7184"N	104°45'47.2639"W	1.16	-139.64	0.03	1.16	
16320.00	90.120	89.350	8677.07	3010.07	8451.68	-544.01	8434.87	40°53'47.7184"N	104°45'46.1050"W	0.59	133.15	-0.45	-0.38	
16410.00	89.970	89.510	8677.00	3010.00	8541.51	-543.11	8524.86	40°53'47.7199"N	104°45'44.9330"W	0.24	-95.53	-0.17	0.18	
16499.00	89.940	89.200	8677.07	3010.07	8630.34	-542.11	8613.86	40°53'47.7225"N	104°45'43.7741"W	0.35	-129.29	-0.03	-0.35	
16588.00	89.850	89.090	8677.23	3010.23	8719.14	-540.78	8702.85	40°53'47.7283"N	104°45'42.6152"W	0.16	86.35	-0.10	-0.12	
16678.00	89.910	90.030	8677.42	3010.42	8808.98	-540.09	8792.84	40°53'47.7277"N	104°45'41.4433"W	1.05	-103.00	0.07	1.04	
16767.00	89.880	89.900	8677.58	3010.58	8897.86	-540.04	8881.84	40°53'47.7209"N	104°45'40.2844"W	0.15	85.92	-0.03	-0.15	
16857.00	89.910	90.320	8677.75	3010.75	8987.75	-540.21	8971.84	40°53'47.7118"N	104°45'39.1126"W	0.47	79.69	0.03	0.47	
16946.00	90.150	91.640	8677.70	3010.70	9076.70	-541.73	9060.83	40°53'47.6894"N	104°45'37.9541"W	1.51	86.94	0.27	1.48	
17035.00	90.220	92.950	8677.41	3010.41	9165.69	-545.30	9149.75	40°53'47.6469"N	104°45'36.7965"W	1.47	83.33	0.08	1.47	
17124.00	90.310	93.720	8677.00	3010.00	9254.69	-550.47	9238.60	40°53'47.5884"N	104°45'35.6402"W	0.87	-87.49	0.10	0.87	
17213.00	90.490	89.590	8676.38	3009.38	9343.64	-553.04	9327.54	40°53'47.5557"N	104°45'34.4824"W	4.64	-101.89	0.20	-4.64	
17303.00	90.250	88.450	8675.80	3008.80	9433.43	-551.50	9417.52	40°53'47.5634"N	104°45'33.3105"W	1.29	-91.35	-0.27	-1.27	
17392.00	90.220	87.180	8675.43	3008.43	9522.07	-548.11	9506.46	40°53'47.5896"N	104°45'32.1521"W	1.43	-89.46	-0.03	-1.43	
17482.00	90.250	83.980	8675.07	3008.07	9611.31	-541.18	9596.18	40°53'47.6507"N	104°45'30.9831"W	3.56	72.47	0.03	-3.56	
17571.00	90.490	84.740	8674.49	3007.49	9699.31	-532.43	9684.74	40°53'47.7298"N	104°45'29.8289"W	0.90	91.04	0.27	0.85	
17661.00	90.430	88.010	8673.77	3006.77	9788.70	-526.74	9774.55	40°53'47.7786"N	104°45'28.6590"W	3.63	88.18	-0.07	3.63	
17750.00	90.550	91.810	8673.01	3006.01	9877.56	-526.60	9863.53	40°53'47.7726"N	104°45'27.5003"W	4.27	92.24	0.13	4.27	
17839.00	90.370	96.370	8672.29	3005.29	9966.52	-532.95	9952.28	40°53'47.7026"N	104°45'26.3454"W	5.13	-62.47	-0.20	5.12	
17928.00	90.740	95.660	8671.43	3004.43	10055.38	-542.27	10040.78	40°53'47.6031"N	104°45'25.1940"W	0.90	-93.63	0.42	-0.80	
18018.00	90.580	93.150	8670.39	3003.39	10145.34	-549.18	10130.50	40°53'47.5274"N	104°45'24.0265"W	2.79	80.74	-0.18	-2.79	
18107.00	90.860	94.870	8669.27	3002.27	10234.31	-555.41	10219.27	40°53'47.4586"N	104°45'22.8713"W	1.96	79.99	0.31	1.93	
18197.00	90.950	95.380	8667.85	3000.85	10324.24	-563.45	10308.90	40°53'47.3717"N	104°45'21.7051"W	0.58	-85.65	0.10	0.57	
18286.00	91.170	92.470	8666.21	2999.21	10413.20	-569.54	10397.67	40°53'47.3042"N	104°45'20.5499"W	3.28	-77.84	0.25	-3.27	
18376.00	91.720	89.910	8663.94	2996.94	10503.12	-571.40	10487.61	40°53'47.2783"N	104°45'19.3790"W	2.91	0.00	0.61	-2.84	LAST BHGE MWD SURVEY (988'FNL & 589'FEL SEC.27)
18400.00†	91.720	89.910	8663.22	2996.22	10527.08	-571.37	10511.60	40°53'47.2766"N	104°45'19.0666"W	0.00		0.00	0.00	EXTRAPOLATED TO TD (964'FNL & 589'FEL SEC.27)

HOLE & CASING SECTIONS - Ref Wellbore: DEPORTER 28-27-2H AWB Ref Wellpath: DEPORTER 28-27-2H AWP									
String/Diameter	Start MD [ft]	End MD [ft]	Interval [ft]	Start TVD [ft]	End TVD [ft]	Start N/S [ft]	Start E/W [ft]	End N/S [ft]	End E/W [ft]
13.5in Open Hole	23.00	1558.00	1535.00	23.00	1557.97	0.00	0.00	3.76	-0.32
9.625in Casing Surface	23.00	1558.00	1535.00	23.00	1557.97	0.00	0.00	3.76	-0.32
8.5in Open Hole	1558.00	18400.00	16842.00	1557.97	8663.22	3.76	-0.32	-571.37	10511.60





# Actual Wellpath Report

DEPORTER 28-27-2H AWP  
Page 7 of 8



REFERENCE WELLPATH IDENTIFICATION			
Operator	EDGE ENERGY LLC	Well	DEPORTER 28-27-2H
Field	WELD COUNTY (NAD 83 / GRID)	API/Legal	
Facility	SEC.29-T11N-R66W	Wellbore	DEPORTER 28-27-2H AWB
Slot	SLOT#1 DEPORTER 28-27-2H (374'FNL & 550'FEL SEC.29)		

TARGETS								
Name	TVD [ft]	North [ft]	East [ft]	Grid East [US ft]	Grid North [US ft]	Latitude	Longitude	Shape
DEPORTER 28-27-2H BHL ON PLAT (980'FNL & 600'FEL SEC.27)	8427.00	-540.63	10515.85	3205890.52	1570328.68	40°53'47.5800"N	104°45'19.0080"W	point
DEPORTER 28-27-2H BHL REV-1 (980'FNL & 620'FEL SEC.27)	8427.00	-540.75	10495.85	3205870.52	1570328.57	40°53'47.5805"N	104°45'19.2684"W	point
DEPORTER 28-27-2H EP ON PLAT (980'FNL & 600'FWL SEC.28)	8512.00	-595.60	1154.88	3196529.38	1570273.71	40°53'47.7960"N	104°47'20.9040"W	point
DEPORTER 28-27-2H EP REV-1 (980'FNL & 620'FWL SEC.28)	8512.00	-595.48	1174.88	3196549.38	1570273.83	40°53'47.7956"N	104°47'20.6436"W	point
SECTION LINES SEC.27-T11N-R66W	9000.00	440.89	11115.82	3206490.51	1571310.22	40°53'57.2280"N	104°45'11.0880"W	polygon
	2D Polygon: dimensions not calculated							
SECTION LINES SEC.28-T11N-R66W	9000.00	440.71	5835.37	3201209.96	1571310.04	40°53'57.6600"N	104°46'19.8480"W	polygon
	2D Polygon: dimensions not calculated							
SECTION LINES SEC.29-T11N-R66W	9000.00	348.82	-4749.64	3190624.75	1571218.15	40°53'57.5880"N	104°48'37.6920"W	polygon
	2D Polygon: dimensions not calculated							

WELLPATH COMPOSITION - Ref Wellbore: DEPORTER 28-27-2H AWP						Ref Wellpath: DEPORTER 28-27-2H AWP	
Start MD [ft]	End MD [ft]	Positional Uncertainty Model	Log Name/Comment			Wellbore	Survey Date
23.00	1502.00	BHI NaviTrak (Rotating+Axial Corr)	13.5" Surface Hole - BHI NaviTrak (Rotating+Axial Corr) <23' - 1502">			DEPORTER 28-27-2H AWB	
1502.00	18400.00	BH AutoTrak Curve (Short)	8.5" Monobore - BHI AutoTrak Curve (Short) <1570' - 18376">			DEPORTER 28-27-2H AWB	





# Actual Wellpath Report

DEPORTER 28-27-2H AWP  
Page 8 of 8



REFERENCE WELLPATH IDENTIFICATION			
Operator	EDGE ENERGY LLC	Well	DEPORTER 28-27-2H
Field	WELD COUNTY (NAD 83 / GRID)	API/Legal	
Facility	SEC.29-T11N-R66W	Wellbore	DEPORTER 28-27-2H AWB
Slot	SLOT#1 DEPORTER 28-27-2H (374'FNL & 550'FEL SEC.29)		

WELLPATH COMMENTS				
MD [ft]	Inclination [°]	Azimuth [°]	TVD [ft]	Comment
0.00	0.000	10.110	0.00	KB
23.00	0.000	10.110	23.00	GL
112.00	0.260	10.110	112.00	FIRST BHGE MWD SURVEY
1558.00	0.656	290.374	1557.97	9 5/8" SURFACE CASING (INTERPOLATED)
18376.00	91.720	89.910	8663.94	LAST BHGE MWD SURVEY (988'FNL & 589'FEL SEC.27)
18400.00	91.720	89.910	8663.22	EXTRAPOLATED TO TD (964'FNL & 589'FEL SEC.27)