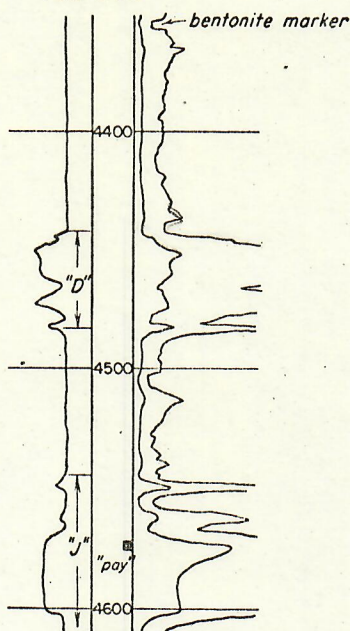
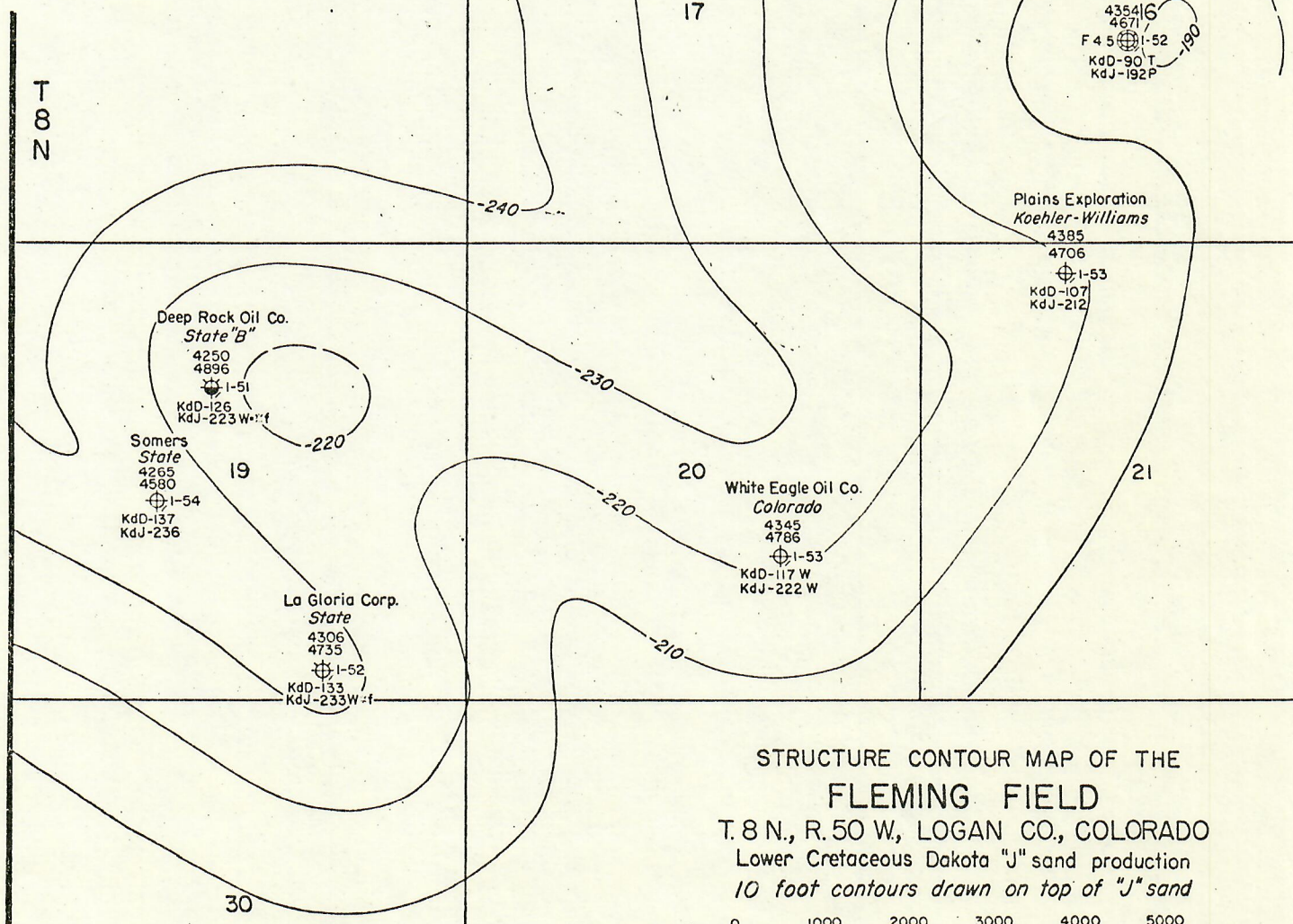


Typical electric log

ARNOLD
I-52 State



R 50 W



STRUCTURE CONTOUR MAP OF THE
FLEMING FIELD
T. 8 N., R. 50 W., LOGAN CO., COLORADO
Lower Cretaceous Dakota "J" sand production
10 foot contours drawn on top of "J" sand

0 1000 2000 3000 4000 5000

Scale: 1 inch = 2000 feet (1:24,000)

Geology by W. S. Lippitt, Sharples Oil Corp.

September 18, 1954

Revised _____

Drafting by Roy Wendelin

For explanation of symbols and abbreviations see pages 68 and 69.

Data prepared by: W. S. LIPPITT

Field Name: FLEMING FIELD

Affiliation: Sharples Oil Corporation

Location: T. 8 N., R. 50 W.

Date: September 18, 1954

County & State: Logan County, Colorado

PAY ZONE: "J" sand of the Dakota formation, Lower Cretaceous series. The "J" sand is light tan to grey quartzose sandstone, fine to medium grained, well sorted, loosely to tightly bonded by irregularly disseminated argillaceous cement, thin to massive and cross-bedded, irregular distribution and amount of porosity and permeability; thin laminae and intercalations of dark grey to black shale; carbonized plant fragments common; thickness of "J" sand averages about 85 feet but a considerable part is impermeable, only the upper part of the main sand member is productive; upper and lower contacts are conformable.

TYPICAL CORE ANALYSIS OF A PAY INTERVAL IN THIS FIELD:

PERM. IN MILLIDARCY		% POROSITY	LIQUID SATURATION (% OF PORE SPACE)	
HORIZONTAL	VERTICAL		WATER	OIL

OTHER SHOWS ENCOUNTERED IN THIS FIELD: None.

TRAP TYPE: Anticlinal (?)

NATURE OF GAS: .605 specific gravity, 801 (net) B.T.U., 0.0% sulfur.

NATURE OF PRODUCING ZONE WATER:

	TOTAL SOLIDS	NA+K	CA	MG	FE	SO ₄	CL	CO ₃	HCO ₃	OH	H ₂ S
ppm											

INITIAL FIELD PRESSURE: 800 lbs. (approx.) psi.

TYPE OF DRIVE: Gas expansion.

NORMAL COMPLETION PRACTICES: Electric logs run of entire hole, micrologs of "D" and "J" sands. Production string set through pay and perforated.

PRODUCTION DATA: (Discovery well completed December 1952).

NO. OF WELLS @ YR. END				PRODUCTION OIL IN BARRELS GAS IN MMCF		NO. OF WELLS @ YR. END				PRODUCTION OIL IN BARRELS GAS IN MMCF	
YEAR	TYPE	PROD.	SHUT-IN			YEAR	TYPE	PROD.	SHUT-IN		
				ANNUAL	CUMULATIVE					ANNUAL	CUMULATIVE
1952	oil						oil				
	gas		1				gas				
1953	oil						oil				
	gas		1				gas				
	oil						oil				
	gas						gas				
	oil						oil				
	gas						gas				
	oil						oil				
	gas						gas				
	oil						oil				
	gas						gas				