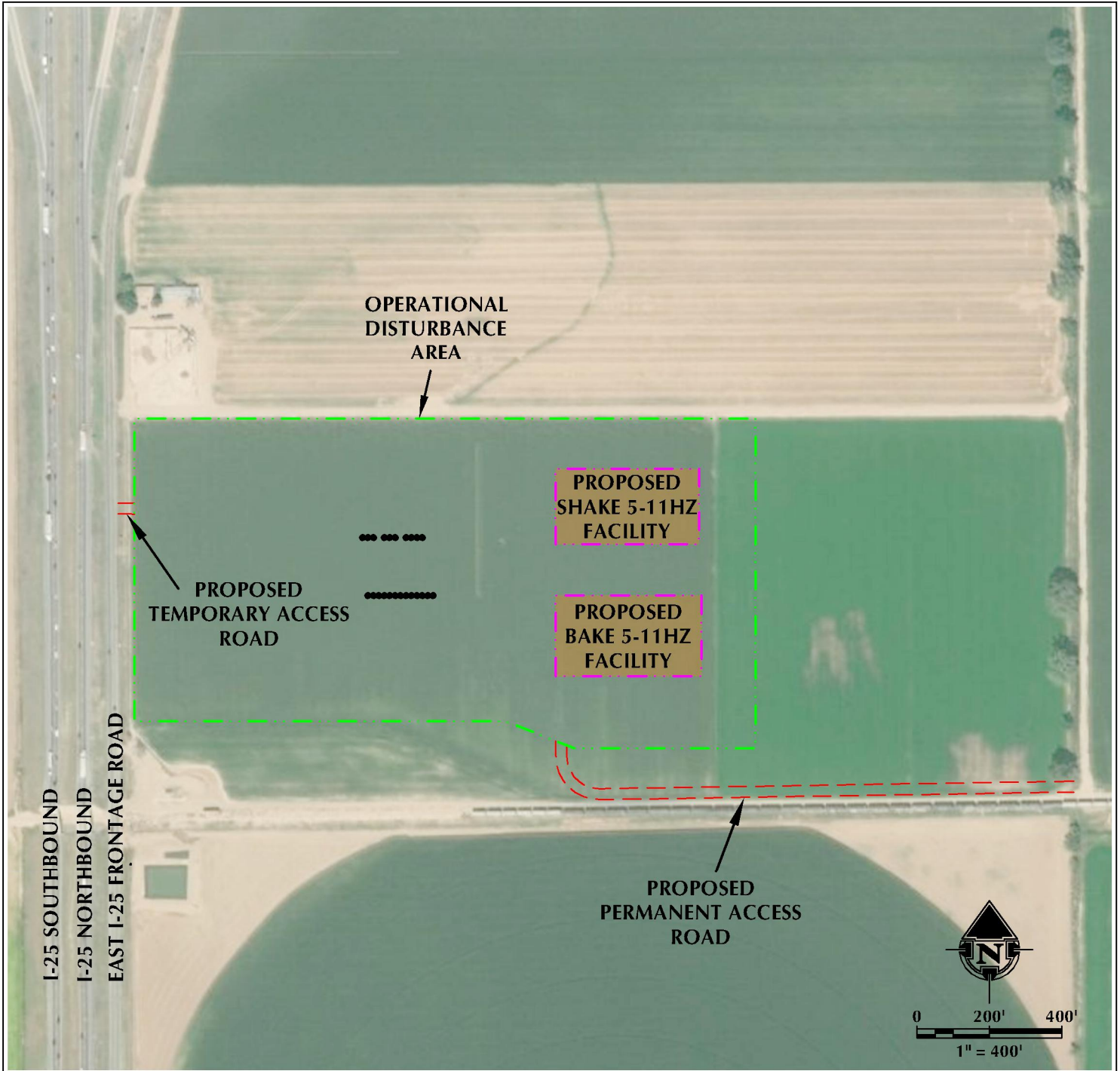


S&B 5-11HZ ACCESS MAP

S1/2 NW1/4 SECTION 11, TOWNSHIP 4 NORTH, RANGE 68 WEST, 6TH P.M.



LEGEND

- PROPOSED WELL
- - - ACCESS
- PROPOSED FACILITY
- DISTURBANCE BOUNDARY

INTERSECTION OF TEMPORARY ACCESS ROAD AND EAST I-25 FRONTAGE ROAD
 LATITUDE: 40.330552°
 LONGITUDE: -104.979724°

K:\MAPS\2018\2018-209-SHAKE N, BAKE, T4N, R68W, SEC. 11\DWG\S&B 5-11HZ ACCESS MAP.dwg, 12/2/2019 10:30:01 AM, steven



609 CONSULTING, LLC
 LOVELAND OFFICE
 6706 North Franklin Avenue
 Loveland, Colorado 80538
 Phone: 970-776-4331

SHERIDAN OFFICE
 1095 Saberton Avenue
 Sheridan, Wyoming 82801
 Phone: 307-674-0609

DATE SURVEYED: 1/30/19
 DATE: 3/5/19
 DRAFTER: DJD
 REVISED: 12/3/19

DATA SOURCES:
 - AERIAL COURTESY OF ESRI, INC.

PREPARED FOR:
Kerr-McGee Oil & Gas Onshore L.P.