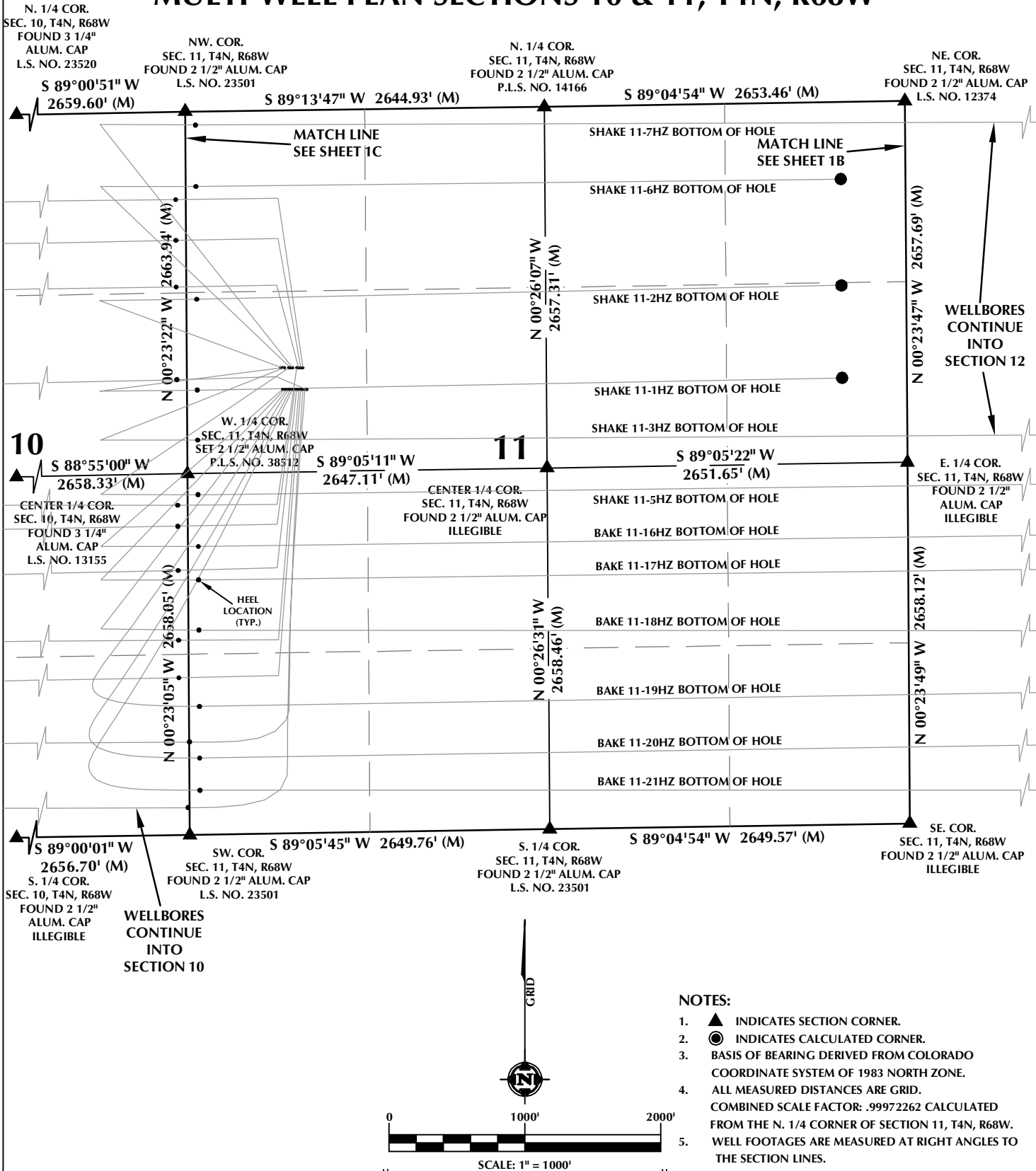


MULTI-WELL PLAN SECTIONS 10 & 11, T4N, R68W



NOTES:

1. ▲ INDICATES SECTION CORNER.
2. ● INDICATES CALCULATED CORNER.
3. BASIS OF BEARING DERIVED FROM COLORADO COORDINATE SYSTEM OF 1983 NORTH ZONE.
4. ALL MEASURED DISTANCES ARE GRID. COMBINED SCALE FACTOR: .99972262 CALCULATED FROM THE N. 1/4 CORNER OF SECTION 11, T4N, R68W.
5. WELL FOOTAGES ARE MEASURED AT RIGHT ANGLES TO THE SECTION LINES.

WELL PAD - S&B 5-11HZ

MULTI-WELL PLAN
SHAKE 11-1HZ, SHAKE 11-2HZ, SHAKE 11-3HZ,
SHAKE 11-5HZ, SHAKE 11-6HZ, SHAKE 11-7HZ,
SHAKE 11-9HZ, SHAKE 11-10HZ, SHAKE 11-11HZ,
SHAKE 11-12HZ, BAKE 11-16HZ, BAKE 11-17HZ, BAKE 11-18HZ,
BAKE 11-19HZ, BAKE 11-20HZ, BAKE 11-21HZ, BAKE 11-22HZ,
BAKE 11-23HZ, BAKE 11-24HZ, BAKE 11-25HZ, BAKE 11-26HZ,
BAKE 11-27HZ & BAKE 11-28HZ
LOCATED IN SECTIONS 9, 10, 11 & 12, T4N, R68W, 6TH P.M.
WELD COUNTY, COLORADO

**Kerr-McGee Oil &
Gas Onshore L.P.**
1099 18th Street
Denver, Colorado 80202



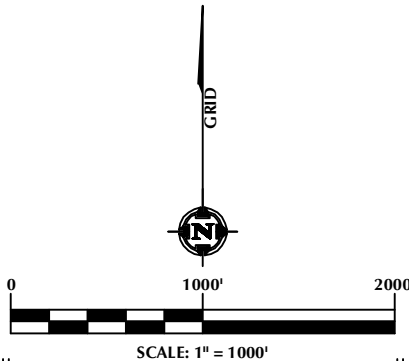
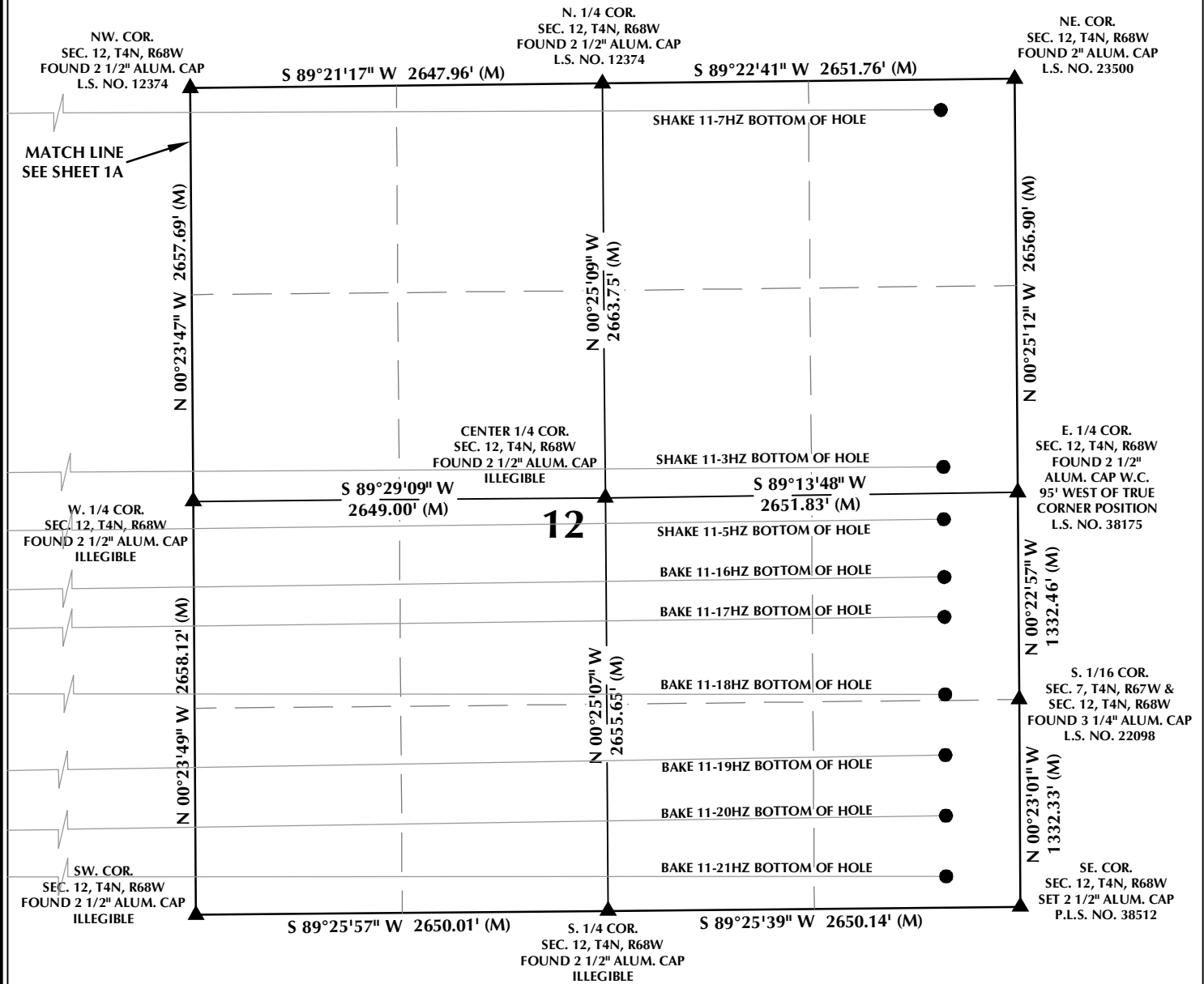
CONSULTING, LLC

SHERIDAN OFFICE
1095 Saberton Avenue
Sheridan, Wyoming 82801
Phone 307-674-0609

LOVELAND OFFICE
6706 North Franklin Avenue
Loveland, Colorado 80538
Phone 970-776-4331

DRAFTED BY:	LMO	CHECKED BY:	RKF	SHEET NO:
DATE DRAFTED:	3/5/19	DATE SURVEYED:	1/30/19	1A
REVISED:	12/6/19	FILE NAME:	18-209	1A OF 2

MULTI-WELL PLAN SECTION 12, T4N, R68W



NOTES:

- ▲ INDICATES SECTION CORNER.
- INDICATES CALCULATED CORNER.
- BASIS OF BEARING DERIVED FROM COLORADO COORDINATE SYSTEM OF 1983 NORTH ZONE.
- ALL MEASURED DISTANCES ARE GRID. COMBINED SCALE FACTOR: .99972262 CALCULATED FROM THE N. 1/4 CORNER OF SECTION 11, T4N, R68W.
- WELL FOOTAGES ARE MEASURED AT RIGHT ANGLES TO THE SECTION LINES.

WELL PAD - S&B 5-11HZ

MULTI-WELL PLAN
SHAKE 11-1HZ, SHAKE 11-2HZ, SHAKE 11-3HZ,
SHAKE 11-5HZ, SHAKE 11-6HZ, SHAKE 11-7HZ,
SHAKE 11-9HZ, SHAKE 11-10HZ, SHAKE 11-11HZ,
SHAKE 11-12HZ, BAKE 11-16HZ, BAKE 11-17HZ, BAKE 11-18HZ,
BAKE 11-19HZ, BAKE 11-20HZ, BAKE 11-21HZ, BAKE 11-22HZ,
BAKE 11-23HZ, BAKE 11-24HZ, BAKE 11-25HZ, BAKE 11-26HZ,
BAKE 11-27HZ & BAKE 11-28HZ
LOCATED IN SECTIONS 9, 10, 11 & 12, T4N, R68W, 6TH P.M.
WELD COUNTY, COLORADO

**Kerr-McGee Oil &
Gas Onshore L.P.**
1099 18th Street
Denver, Colorado 80202



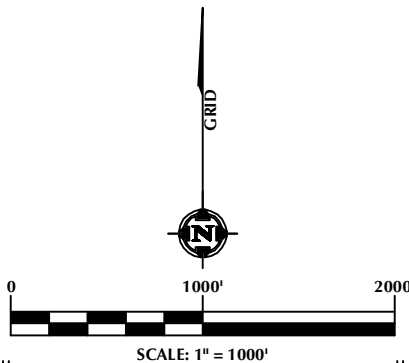
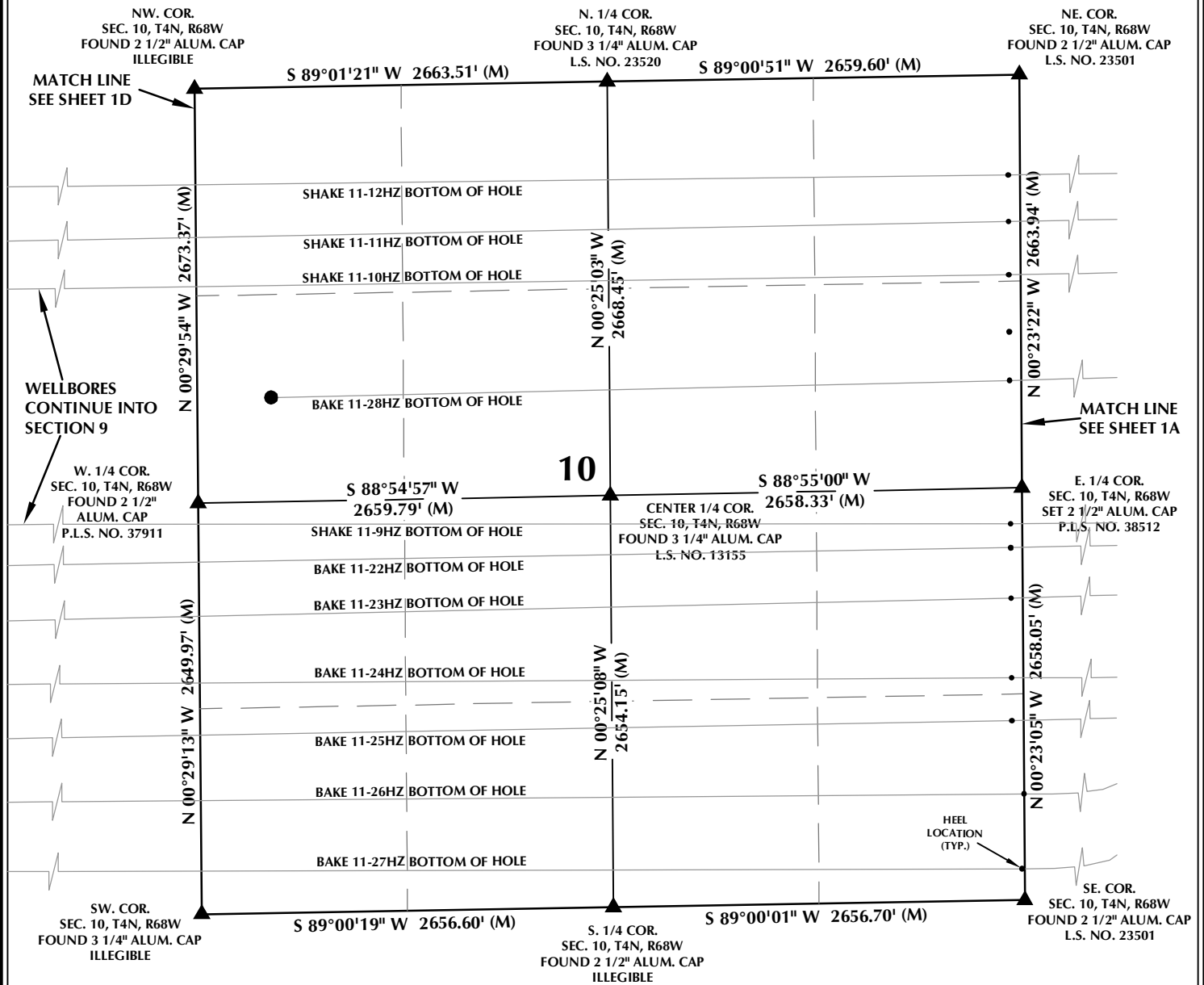
CONSULTING, LLC

SHERIDAN OFFICE
1095 Saberton Avenue
Sheridan, Wyoming 82801
Phone 307-674-0609

LOVELAND OFFICE
6706 North Franklin Avenue
Loveland, Colorado 80538
Phone 970-776-4331

DRAFTED BY:	LMO	CHECKED BY:	RKF	SHEET NO:
DATE DRAFTED:	3/5/19	DATE SURVEYED:	1/30/19	1B
REVISED:	11/14/19	FILE NAME:	18-209	1B OF 2

MULTI-WELL PLAN SECTION 10, T4N, R68W



NOTES:

1. ▲ INDICATES SECTION CORNER.
2. ● INDICATES CALCULATED CORNER.
3. BASIS OF BEARING DERIVED FROM COLORADO COORDINATE SYSTEM OF 1983 NORTH ZONE.
4. ALL MEASURED DISTANCES ARE GRID. COMBINED SCALE FACTOR: .99972262 CALCULATED FROM THE N. 1/4 CORNER OF SECTION 11, T4N, R68W.
5. WELL FOOTAGES ARE MEASURED AT RIGHT ANGLES TO THE SECTION LINES.

WELL PAD - S&B 5-11HZ

MULTI-WELL PLAN
SHAKE 11-1HZ, SHAKE 11-2HZ, SHAKE 11-3HZ,
SHAKE 11-5HZ, SHAKE 11-6HZ, SHAKE 11-7HZ,
SHAKE 11-9HZ, SHAKE 11-10HZ, SHAKE 11-11HZ,
SHAKE 11-12HZ, BAKE 11-16HZ, BAKE 11-17HZ, BAKE 11-18HZ,
BAKE 11-19HZ, BAKE 11-20HZ, BAKE 11-21HZ, BAKE 11-22HZ,
BAKE 11-23HZ, BAKE 11-24HZ, BAKE 11-25HZ, BAKE 11-26HZ,
BAKE 11-27HZ & BAKE 11-28HZ
LOCATED IN SECTIONS 9, 10, 11 & 12, T4N, R68W, 6TH P.M.
WELD COUNTY, COLORADO

**Kerr-McGee Oil &
Gas Onshore L.P.**
1099 18th Street
Denver, Colorado 80202



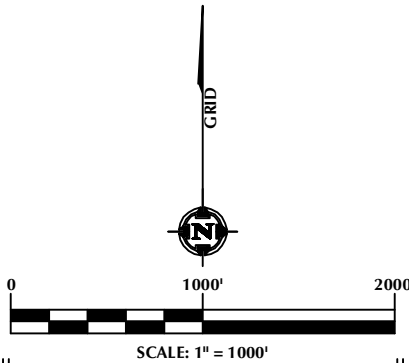
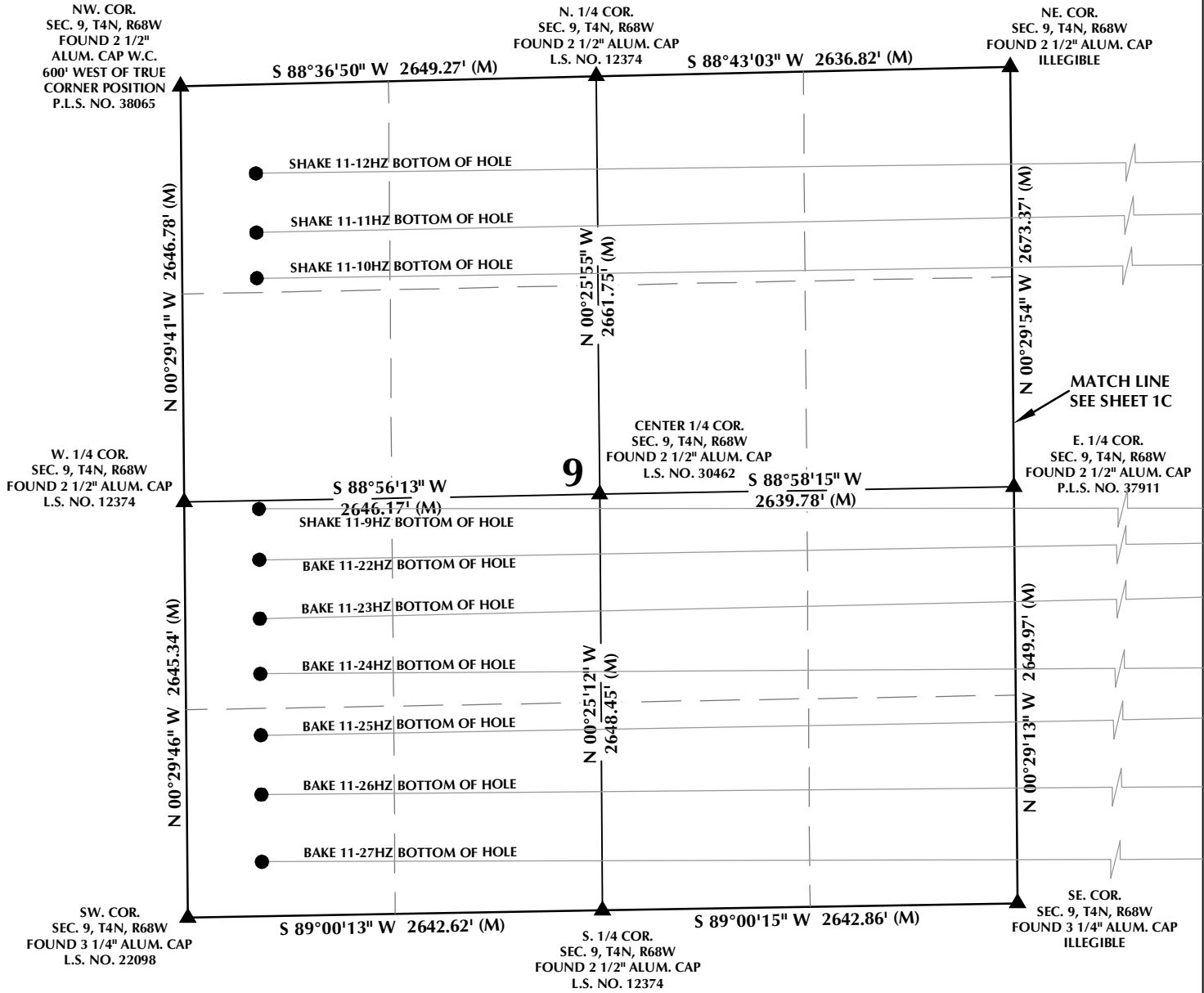
CONSULTING, LLC

SHERIDAN OFFICE
1095 Saberton Avenue
Sheridan, Wyoming 82801
Phone 307-674-0609

LOVELAND OFFICE
6706 North Franklin Avenue
Loveland, Colorado 80538
Phone 970-776-4331

DRAFTED BY:	LMO	CHECKED BY:	RKF	SHEET NO:
DATE DRAFTED:	3/5/19	DATE SURVEYED:	1/30/19	1C
REVISED:	11/14/19	FILE NAME:	18-209	1C OF 2

MULTI-WELL PLAN SECTION 9, T4N, R68W



NOTES:

- ▲ INDICATES SECTION CORNER.
- INDICATES CALCULATED CORNER.
- BASIS OF BEARING DERIVED FROM COLORADO COORDINATE SYSTEM OF 1983 NORTH ZONE.
- ALL MEASURED DISTANCES ARE GRID. COMBINED SCALE FACTOR: .99972262 CALCULATED FROM THE N. 1/4 CORNER OF SECTION 11, T4N, R68W.
- WELL FOOTAGES ARE MEASURED AT RIGHT ANGLES TO THE SECTION LINES.

WELL PAD - S&B 5-11HZ

MULTI-WELL PLAN
SHAKE 11-1HZ, SHAKE 11-2HZ, SHAKE 11-3HZ,
SHAKE 11-5HZ, SHAKE 11-6HZ, SHAKE 11-7HZ,
SHAKE 11-9HZ, SHAKE 11-10HZ, SHAKE 11-11HZ,
SHAKE 11-12HZ, BAKE 11-16HZ, BAKE 11-17HZ, BAKE 11-18HZ,
BAKE 11-19HZ, BAKE 11-20HZ, BAKE 11-21HZ, BAKE 11-22HZ,
BAKE 11-23HZ, BAKE 11-24HZ, BAKE 11-25HZ, BAKE 11-26HZ,
BAKE 11-27HZ & BAKE 11-28HZ
LOCATED IN SECTIONS 9, 10, 11 & 12, T4N, R68W, 6TH P.M.
WELD COUNTY, COLORADO

**Kerr-McGee Oil &
Gas Onshore L.P.**
1099 18th Street
Denver, Colorado 80202



CONSULTING, LLC

SHERIDAN OFFICE
1095 Saberton Avenue
Sheridan, Wyoming 82801
Phone 307-674-0609

LOVELAND OFFICE
6706 North Franklin Avenue
Loveland, Colorado 80538
Phone 970-776-4331

DRAFTED BY:	LMO	CHECKED BY:	RKF	SHEET NO:
DATE DRAFTED:	3/5/19	DATE SURVEYED:	1/30/19	1D
REVISED:	11/14/19	FILE NAME:	18-209	1D OF 2

S&B 5-11HZ

WELL NOTES:

SHAKE 11-1HZ

SURFACE: 1894' FNL, 689' FWL, SEC. 11
BOTTOM HOLE: 2030' FNL, 475' FEL, SEC. 11

SHAKE 11-2HZ

SURFACE: 1894' FNL, 704' FWL, SEC. 11
BOTTOM HOLE: 1349' FNL, 475' FEL, SEC. 11

SHAKE 11-3HZ

SURFACE: 1895' FNL, 719' FWL, SEC. 11
BOTTOM HOLE: 2489' FNL, 475' FEL, SEC. 12

SHAKE 11-5HZ

SURFACE: 1895' FNL, 749' FWL, SEC. 11
BOTTOM HOLE: 2495' FSL, 476' FEL, SEC. 12

SHAKE 11-6HZ

SURFACE: 1895' FNL, 764' FWL, SEC. 11
BOTTOM HOLE: 566' FNL, 475' FEL, SEC. 11

SHAKE 11-7HZ

SURFACE: 1895' FNL, 779' FWL, SEC. 11
BOTTOM HOLE: 193' FNL, 475' FEL, SEC. 12

SHAKE 11-9HZ

SURFACE: 1896' FNL, 809' FWL, SEC. 11
BOTTOM HOLE: 2593' FSL, 476' FWL, SEC. 9

SHAKE 11-10HZ

SURFACE: 1896' FNL, 824' FWL, SEC. 11
BOTTOM HOLE: 1234' FNL, 475' FWL, SEC. 9

SHAKE 11-11HZ

SURFACE: 1896' FNL, 839' FWL, SEC. 11
BOTTOM HOLE: 942' FNL, 475' FWL, SEC. 9

SHAKE 11-12HZ

SURFACE: 1896' FNL, 854' FWL, SEC. 11
BOTTOM HOLE: 565' FNL, 475' FWL, SEC. 9

BAKE 11-16HZ

SURFACE: 2054' FNL, 702' FWL, SEC. 11
BOTTOM HOLE: 2124' FSL, 475' FEL, SEC. 12

BAKE 11-17HZ

SURFACE: 2055' FNL, 717' FWL, SEC. 11
BOTTOM HOLE: 1868' FSL, 475' FEL, SEC. 12

BAKE 11-18HZ

SURFACE: 2055' FNL, 732' FWL, SEC. 11
BOTTOM HOLE: 1369' FSL, 475' FEL, SEC. 12

BAKE 11-19HZ

SURFACE: 2055' FNL, 747' FWL, SEC. 11
BOTTOM HOLE: 979' FSL, 475' FEL, SEC. 12

BAKE 11-20HZ

SURFACE: 2055' FNL, 762' FWL, SEC. 11
BOTTOM HOLE: 588' FSL, 475' FEL, SEC. 12

BAKE 11-21HZ

SURFACE: 2055' FNL, 777' FWL, SEC. 11
BOTTOM HOLE: 198' FSL, 475' FEL, SEC. 12

BAKE 11-22HZ

SURFACE: 2056' FNL, 792' FWL, SEC. 11
BOTTOM HOLE: 2269' FSL, 476' FWL, SEC. 9

BAKE 11-23HZ

SURFACE: 2056' FNL, 807' FWL, SEC. 11
BOTTOM HOLE: 1894' FSL, 476' FWL, SEC. 9

BAKE 11-24HZ

SURFACE: 2056' FNL, 822' FWL, SEC. 11
BOTTOM HOLE: 1543' FSL, 475' FWL, SEC. 9

BAKE 11-25HZ

SURFACE: 2056' FNL, 837' FWL, SEC. 11
BOTTOM HOLE: 1152' FSL, 475' FWL, SEC. 9

BAKE 11-26HZ

SURFACE: 2056' FNL, 852' FWL, SEC. 11
BOTTOM HOLE: 774' FSL, 475' FWL, SEC. 9

BAKE 11-27HZ

SURFACE: 2057' FNL, 867' FWL, SEC. 11
BOTTOM HOLE: 346' FSL, 475' FWL, SEC. 9

BAKE 11-28HZ

SURFACE: 2057' FNL, 882' FWL, SEC. 11
BOTTOM HOLE: 1999' FNL, 475' FWL, SEC. 10

WELL PAD - S&B 5-11HZ

MULTI-WELL PLAN

SHAKE 11-1HZ, SHAKE 11-2HZ, SHAKE 11-3HZ,
SHAKE 11-5HZ, SHAKE 11-6HZ, SHAKE 11-7HZ,
SHAKE 11-9HZ, SHAKE 11-10HZ, SHAKE 11-11HZ,
SHAKE 11-12HZ, BAKE 11-16HZ, BAKE 11-17HZ, BAKE 11-18HZ,
BAKE 11-19HZ, BAKE 11-20HZ, BAKE 11-21HZ, BAKE 11-22HZ,
BAKE 11-23HZ, BAKE 11-24HZ, BAKE 11-25HZ, BAKE 11-26HZ,
BAKE 11-27HZ & BAKE 11-28HZ
LOCATED IN SECTIONS 9, 10, 11 & 12, T4N, R68W, 6TH P.M.
WELD COUNTY, COLORADO

**Kerr-McGee Oil &
Gas Onshore L.P.**

1099 18th Street
Denver, Colorado 80202



CONSULTING, LLC

SHERIDAN OFFICE
1095 Saberton Avenue
Sheridan, Wyoming 82801
Phone 307-674-0609

LOVELAND OFFICE
6706 North Franklin Avenue
Loveland, Colorado 80538
Phone 970-776-4331

DRAFTED BY:	LMO	CHECKED BY:	RKF	SHEET NO:
DATE DRAFTED:	3/5/19	DATE SURVEYED:	1/30/19	2
REVISED:	11/14/19	FILE NAME:	18-209	2 OF 2