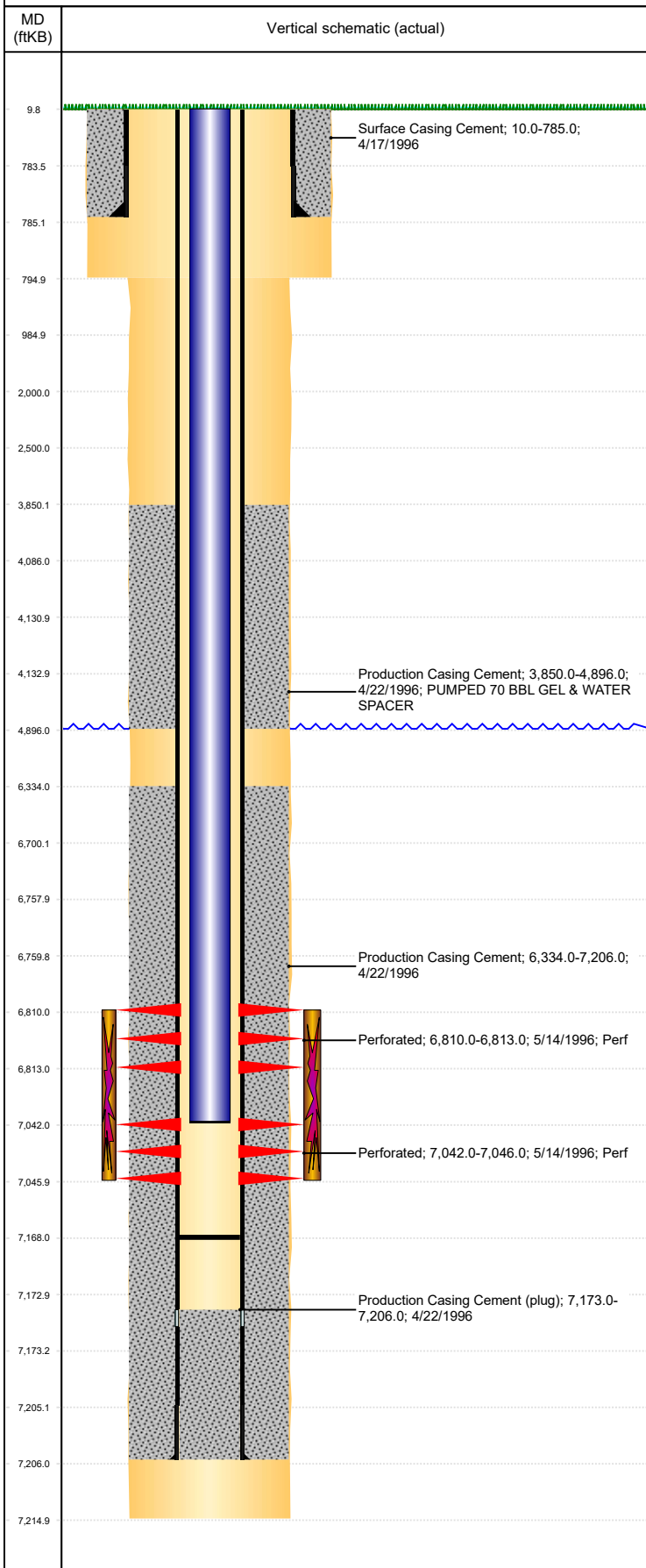


**Well Name: HSR GUTTERSEN 13-33**

VERTICAL, ORIGINAL HOLE, 12/27/2019 11:35:56 AM



Well Header									
API 05-123-19116		Business Unit DJ BASIN		District 15		Well Config VERTICAL			
KB - GL / MSL (ft... 10.00		Spud Date 4/16/1996		P & A Date		Well Production Status SI			SoRT No
Comment									
Surface Location (Congressional)									
Qtr 3 SW	Qtr 4 SW	Section 33	Twnshp 3	Twنش... N	Range 64	Rng E/... W	Actual Latitude (°) 40.17669000	Actual Longitude (°) -104.56366000	
Wellbore Sections									
Section Des			Size (in)			Act Top, MD (ftKB)		Act Btm, MD (ftKB)	
SURFACE			12 1/4			10		795	
PRODUCTION			7 7/8			795		7,215	
Casing Strings									
Csg Des			Run Date		OD (in)	Wt/Len (lb/ft)	Grade	Top, MD (ftKB)	MD (ftKB)
Surface			4/17/1996		8 5/8	24.00		10.0	785.0
Production			4/22/1996		3 1/2	7.70	I-70	10.0	7,206.0
Cement									
Des					Start Date		Top (ftKB)		Btm (ftKB)
Surface Casing Cement					4/17/1996		10.0		785.0
Production Casing Cement					4/22/1996		3,850.0		4,896.0
Production Casing Cement					4/22/1996		6,334.0		7,206.0
Zone Statuses									
Zone Name	Status Date	Status	Fluid Type	Job				Prod Method	
CODELL	6/20/1996	PR	Water	DRILLING/COMPLETION - ORIGINAL, 4/16/1996...				Flowing	
CODELL	12/20/2014	PR							
NIOBRARA	12/20/2014	PR							
NIOBRARA	5/9/2017	SI							
Perforation Data									
Linked Zone			Bnch/Stg	Entered Shot Total	Top (ftKB)		Btm (ftKB)		Date
NIOBRARA, ORIGINAL HOLE				7	6,810.00		6,813.00		5/14/1996
CODELL, ORIGINAL HOLE				10	7,042.00		7,046.00		5/14/1996
Stimulation Intervals									
Zone					Start Date		Top (ftKB)		Btm (ftKB)
NIOBRARA, ORIGINAL HOLE					5/15/1996		6,810.0		7,046.0
Other In Hole									
Run Date		Des				OD (in)	Top (ftKB)		Btm (ftKB)
Logs									
Date		Type				Top, MD (ftKB)		Btm, MD (ftKB)	
4/21/1996		COMPENSATED DENSITY				4,250.0		7,195.0	
4/21/1996		INDUCTION				795.0		7,195.0	
4/26/1996		CBL/CCL/GR				3,575.0		7,128.0	
2/8/2012		GYRO				0.0		7,000.0	
Plug Back Total Depths									
Date		Type		Com					Depth (ftKB)
4/26/1996		FILL		DEPTH LOGGER ON CBL					7,136.0
5/18/1996		FILL		CLEAN OUT					7,168.0