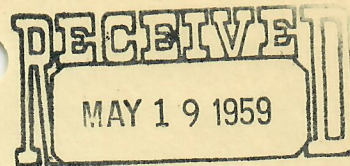




99999999

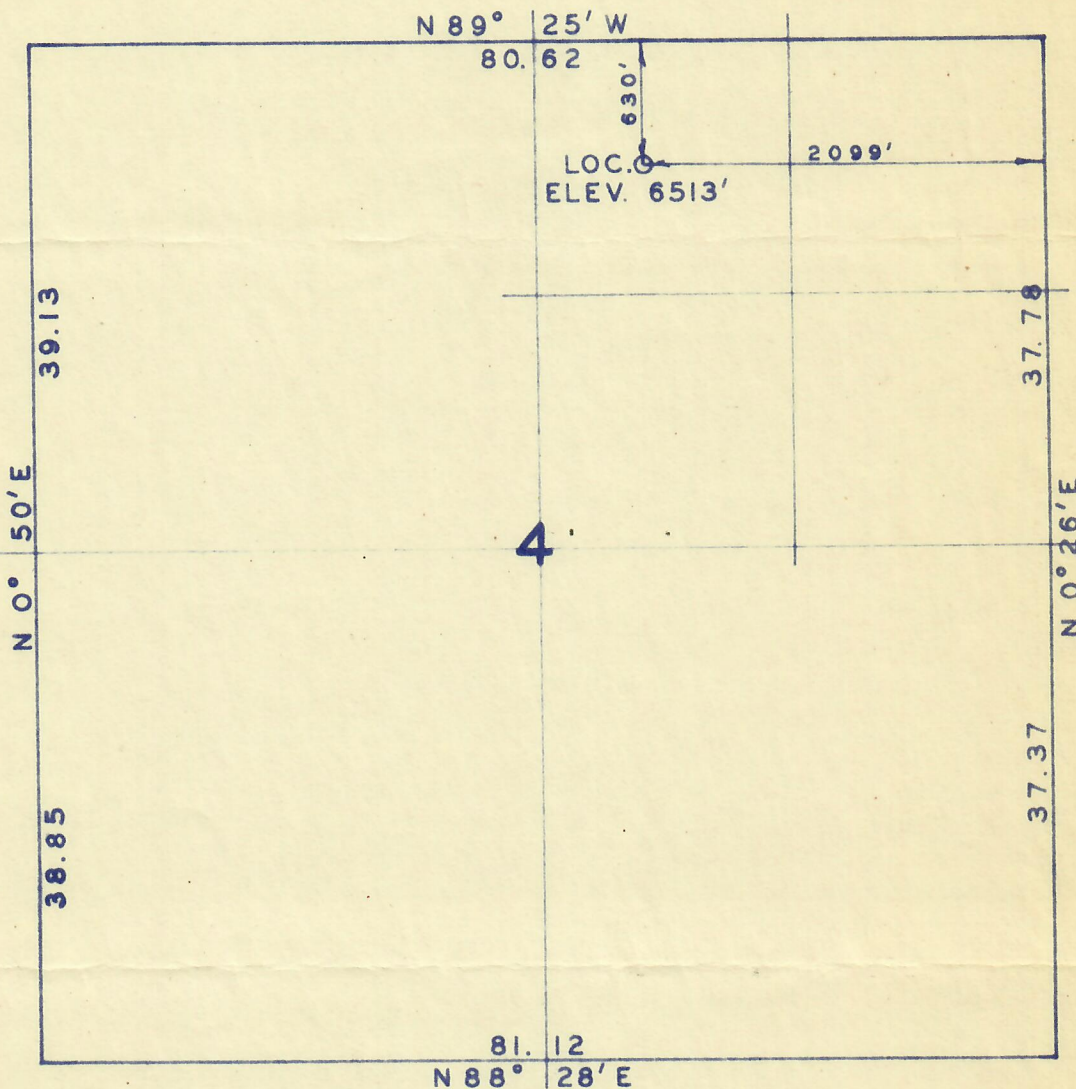
081-05362



MAY 19 1959

OIL & GAS
CONSERVATION COMMISSION

T 7 N, R 90 W



SCALE 1" = 1000'

BY: ROSS CONSTRUCTION CO.
VERNAL, UTAH



00723808



PARTY R. D. ROSS
S. L. LUCK

WEATHER

SURVEY

UNITED STATES SMELTING REFINING & MINING CO. - GOOCH 7-90
WELL 1-4, LOCATED 2099' WEST OF EAST LINE & 630' SOUTH
OF NORTH LINE, SEC 4, T7N, R90W, 6TH PRIN. MER. COL-
ORADO.

DATE 5-7-59

REFERENCES
G.L.O. PLAT

FILE USSR & M