



PROJECT DETAILS: Weld County, CO (NAD83)  
Geodetic System: US State Plane 1983  
Datum: North American Datum 1983  
Ellipsoid: GRS 1980  
Zone: Colorado Northern Zone  
System Datum: Mean Sea Level  
Local North: True

WELL DETAILS: ANSCHUTZ EQUUS FARMS FED 5-61-35-6457B

Ground Elevation:: 4479.60  
RKB Elevation: KB @ 4496.10usft (Cade 23)  
Rig Name: Cade 23

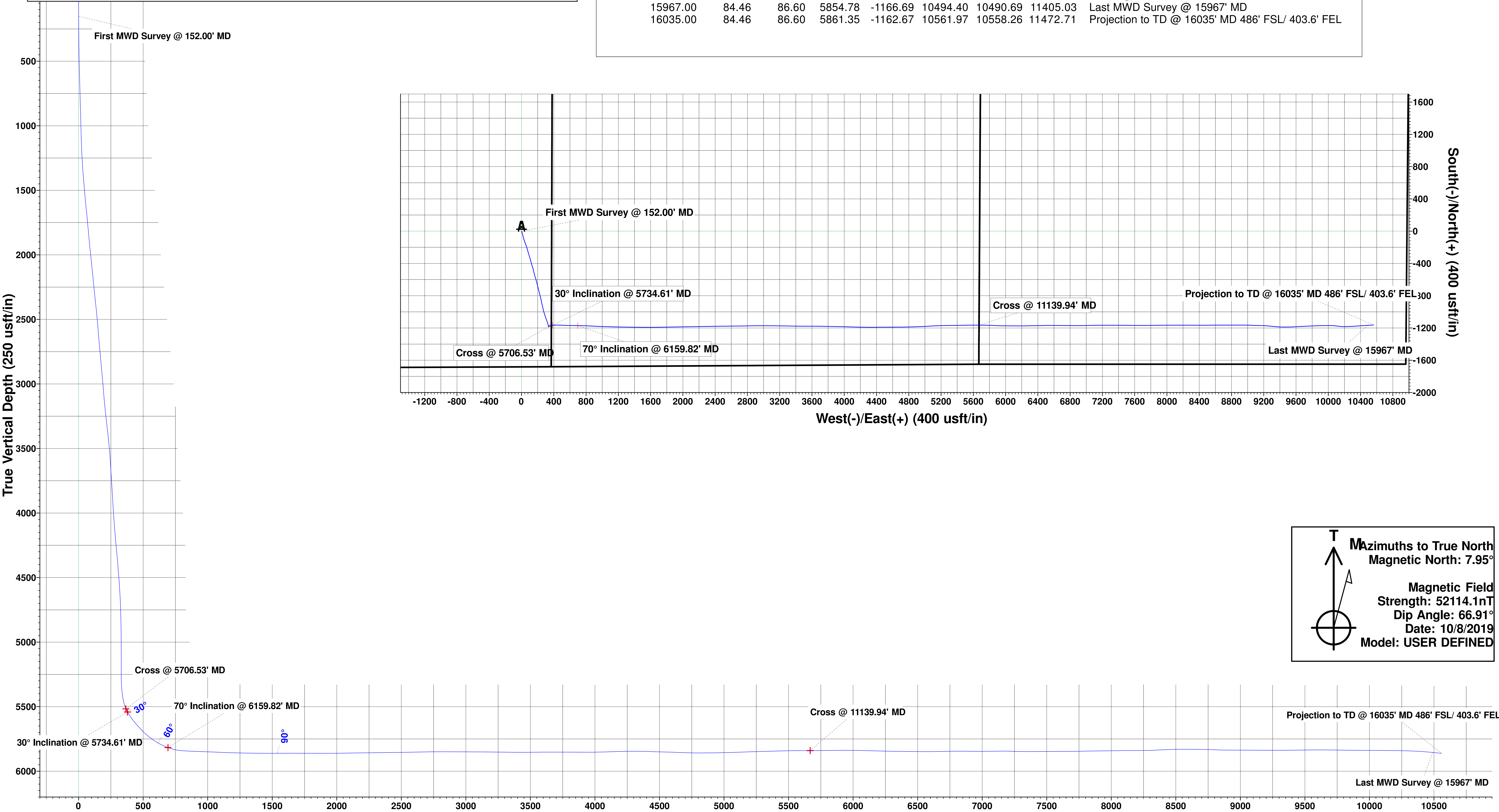


HighPoint Resources  
Project: Weld County, CO (NAD83)  
Site: Sec 34-T05N-R61W  
Well: ANSCHUTZ EQUUS FARMS FED 5-61-35-6457B  
Wellbore: Wellbore #1

Design: Wellbore #1 (ANSCHUTZ EQUUS FARMS FED 5-61-35-6457B/Wellbore #1)  
Cade 23

ANNOTATIONS

MD	Inc	Azi	TVD	+N/-S	+E/-W	VSect	Departure	Annotation
152.00	0.60	153.28	152.00	-0.71	0.36	0.36	0.80	First MWD Survey @ 152.00' MD
5706.53	24.24	77.60	5516.75	-1168.60	370.00	366.33	1277.42	Cross @ 5706.53' MD
5734.61	30.00	81.96	5541.74	-1166.38	382.59	378.93	1289.23	30° Inclination @ 5734.61' MD
6159.82	70.00	90.68	5817.05	-1170.67	696.15	692.46	1603.86	70° Inclination @ 6159.82' MD
11139.94	89.71	90.41	5840.78	-1164.49	5671.00	5667.31	6579.08	Cross @ 11139.94' MD
15967.00	84.46	86.60	5854.78	-1166.69	10494.40	10490.69	11405.03	Last MWD Survey @ 15967' MD
16035.00	84.46	86.60	5861.35	-1162.67	10561.97	10558.26	11472.71	Projection to TD @ 16035' MD 486' FSL/ 403.6' FEL



**M**azimuths to True North  
Magnetic North: 7.95°

Magnetic Field  
Strength: 52114.1nT  
Dip Angle: 66.91°  
Date: 10/8/2019  
Model: USER DEFINED

# **HighPoint Resources**

**Weld County, CO (NAD83)**

**Sec 34-T05N-R61W**

**ANSCHUTZ EQUUS FARMS FED 5-61-35-6457B**

**Wellbore #1**

**Design: Wellbore #1**

## **Standard Survey Report**

**17 November, 2019**

## Survey Report

<b>Company:</b>	HighPoint Resources	<b>Local Co-ordinate Reference:</b>	Well ANSCHUTZ EQUUS FARMS FED 5-61-35-6457B
<b>Project:</b>	Weld County, CO (NAD83)	<b>TVD Reference:</b>	KB @ 4496.10usft (Cade 23)
<b>Site:</b>	Sec 34-T05N-R61W	<b>MD Reference:</b>	KB @ 4496.10usft (Cade 23)
<b>Well:</b>	ANSCHUTZ EQUUS FARMS FED 5-61-35-6457B	<b>North Reference:</b>	True
<b>Wellbore:</b>	Wellbore #1	<b>Survey Calculation Method:</b>	Minimum Curvature
<b>Design:</b>	Wellbore #1	<b>Database:</b>	EDM 5000.15 Single User Db

<b>Project</b>	Weld County, CO (NAD83)		
<b>Map System:</b>	US State Plane 1983	<b>System Datum:</b>	Mean Sea Level
<b>Geo Datum:</b>	North American Datum 1983		
<b>Map Zone:</b>	Colorado Northern Zone		

<b>Site</b>	Sec 34-T05N-R61W			
<b>Site Position:</b>		<b>Northing:</b>	1,375,662.52 usft	<b>Latitude:</b> 40.357356
<b>From:</b>	Lat/Long	<b>Easting:</b>	3,361,016.48 usft	<b>Longitude:</b> -104.204528
<b>Position Uncertainty:</b>	0.00 usft	<b>Slot Radius:</b>	13-3/16 "	<b>Grid Convergence:</b> 0.84 °

<b>Well</b>	ANSCHUTZ EQUUS FARMS FED 5-61-35-6457B			
<b>Well Position</b>	<b>+N/-S</b>	0.00 usft	<b>Northing:</b>	1,374,777.97 usft
	<b>+E/-W</b>	0.00 usft	<b>Easting:</b>	3,365,950.03 usft
<b>Position Uncertainty</b>	0.00 usft	<b>Wellhead Elevation:</b>	usft	<b>Ground Level:</b> 4,479.60 usft

<b>Wellbore</b>	Wellbore #1				
<b>Magnetics</b>	<b>Model Name</b>	<b>Sample Date</b>	<b>Declination (°)</b>	<b>Dip Angle (°)</b>	<b>Field Strength (nT)</b>
	User Defined	10/8/2019	7.95	66.91	52,114.10000000

<b>Design</b>	Wellbore #1				
<b>Audit Notes:</b>					
<b>Version:</b>	1.0	<b>Phase:</b>	ACTUAL	<b>Tie On Depth:</b>	0.00
<b>Vertical Section:</b>	<b>Depth From (TVD) (usft)</b>	<b>+N/-S (usft)</b>	<b>+E/-W (usft)</b>	<b>Direction (°)</b>	
	0.00	0.00	0.00	89.82	

<b>Survey Program</b>	<b>Date</b>	11/17/2019			
<b>From (usft)</b>	<b>To (usft)</b>	<b>Survey (Wellbore)</b>	<b>Tool Name</b>	<b>Description</b>	
152.00	16,035.00	Atlas MWD Surveys (Wellbore #1)	MWD	MWD - Standard	

Survey									
Measured Depth (usft)	Inclination (°)	Azimuth (°)	Vertical Depth (usft)	+N/-S (usft)	+E/-W (usft)	Vertical Section (usft)	Dogleg Rate (°/100usft)	Build Rate (°/100usft)	Turn Rate (°/100usft)
0.00	0.00	0.00	0.00	0.00	0.00	0.00	0.00	0.00	0.00
152.00	0.60	153.28	152.00	-0.71	0.36	0.36	0.39	0.39	0.00
First MWD Survey @ 152.00' MD									
244.00	0.90	148.26	243.99	-1.76	0.95	0.95	0.33	0.33	-5.46
335.00	1.59	156.60	334.97	-3.52	1.83	1.82	0.78	0.76	9.16
427.00	2.59	162.68	426.91	-6.68	2.96	2.94	1.11	1.09	6.61
519.00	4.07	158.68	518.75	-11.70	4.76	4.73	1.63	1.61	-4.35
611.00	5.28	163.53	610.44	-18.81	7.15	7.09	1.38	1.32	5.27
703.00	5.78	161.87	702.01	-27.27	9.79	9.71	0.57	0.54	-1.80

# Survey Report

<b>Company:</b>	HighPoint Resources	<b>Local Co-ordinate Reference:</b>	Well ANSCHUTZ EQUUS FARMS FED 5-61-35-6457B
<b>Project:</b>	Weld County, CO (NAD83)	<b>TVD Reference:</b>	KB @ 4496.10usft (Cade 23)
<b>Site:</b>	Sec 34-T05N-R61W	<b>MD Reference:</b>	KB @ 4496.10usft (Cade 23)
<b>Well:</b>	ANSCHUTZ EQUUS FARMS FED 5-61-35-6457B	<b>North Reference:</b>	True
<b>Wellbore:</b>	Wellbore #1	<b>Survey Calculation Method:</b>	Minimum Curvature
<b>Design:</b>	Wellbore #1	<b>Database:</b>	EDM 5000.15 Single User Db

Survey										
Measured Depth (usft)	Inclination (°)	Azimuth (°)	Vertical Depth (usft)	+N/-S (usft)	+E/-W (usft)	Vertical Section (usft)	Dogleg Rate (°/100usft)	Build Rate (°/100usft)	Turn Rate (°/100usft)	
795.00	6.12	165.77	793.52	-36.42	12.44	12.33	0.57	0.37	4.24	
887.00	6.67	164.96	884.94	-46.34	15.03	14.89	0.61	0.60	-0.88	
935.00	6.54	166.76	932.62	-51.69	16.38	16.22	0.51	-0.27	3.75	
1,071.00	7.09	168.37	1,067.66	-67.45	19.85	19.63	0.43	0.40	1.18	
1,163.00	8.93	164.85	1,158.76	-79.90	22.86	22.61	2.07	2.00	-3.83	
1,255.00	10.70	162.92	1,249.41	-94.96	27.23	26.93	1.96	1.92	-2.10	
1,347.00	12.36	160.85	1,339.55	-112.43	32.97	32.62	1.86	1.80	-2.25	
1,438.00	13.72	159.13	1,428.20	-131.71	40.01	39.60	1.55	1.49	-1.89	
1,530.00	14.46	160.77	1,517.44	-152.75	47.68	47.20	0.91	0.80	1.78	
1,626.00	17.08	160.64	1,609.82	-177.38	56.30	55.75	2.73	2.73	-0.14	
1,721.00	17.63	160.57	1,700.49	-204.11	65.71	65.07	0.58	0.58	-0.07	
1,817.00	18.38	165.06	1,791.79	-232.44	74.45	73.72	1.64	0.78	4.68	
1,913.00	19.85	165.15	1,882.50	-262.82	82.53	81.71	1.53	1.53	0.09	
2,009.00	18.84	161.57	1,973.08	-293.28	91.61	90.69	1.62	-1.05	-3.73	
2,105.00	19.23	163.02	2,063.83	-323.11	101.13	100.11	0.64	0.41	1.51	
2,200.00	20.78	164.53	2,153.10	-354.31	110.19	109.08	1.72	1.63	1.59	
2,296.00	19.82	163.93	2,243.13	-386.37	119.24	118.03	1.02	-1.00	-0.63	
2,392.00	20.55	164.01	2,333.24	-418.20	128.39	127.07	0.76	0.76	0.08	
2,487.00	20.14	162.42	2,422.31	-449.82	137.92	136.51	0.72	-0.43	-1.67	
2,583.00	20.34	166.37	2,512.39	-481.80	146.84	145.33	1.44	0.21	4.11	
2,679.00	19.97	166.89	2,602.51	-513.98	154.49	152.88	0.43	-0.39	0.54	
2,775.00	18.14	164.49	2,693.24	-544.35	162.21	160.50	2.07	-1.91	-2.50	
2,871.00	17.56	162.77	2,784.62	-572.58	170.50	168.70	0.82	-0.60	-1.79	
2,966.00	17.79	163.34	2,875.14	-600.17	178.90	177.02	0.30	0.24	0.60	
3,062.00	18.73	164.20	2,966.30	-629.05	187.30	185.33	1.02	0.98	0.90	
3,157.00	20.08	167.43	3,055.91	-659.65	195.01	192.93	1.81	1.42	3.40	
3,253.00	21.50	166.12	3,145.66	-692.81	202.81	200.64	1.56	1.48	-1.36	
3,348.00	23.08	165.46	3,233.55	-727.74	211.66	209.38	1.68	1.66	-0.69	
3,443.00	24.85	164.88	3,320.36	-765.04	221.55	219.14	1.88	1.86	-0.61	
3,539.00	24.06	165.96	3,407.75	-803.50	231.56	229.03	0.95	-0.82	1.13	
3,635.00	22.70	167.08	3,495.86	-840.54	240.45	237.80	1.49	-1.42	1.17	
3,731.00	18.30	168.72	3,585.76	-873.39	247.54	244.79	4.62	-4.58	1.71	
3,827.00	15.97	168.01	3,677.50	-901.09	253.23	250.40	2.44	-2.43	-0.74	
3,922.00	15.90	165.60	3,768.85	-926.48	259.18	256.27	0.70	-0.07	-2.54	
4,018.00	15.68	168.41	3,861.23	-951.92	265.06	262.07	0.83	-0.23	2.93	
4,114.00	15.13	167.93	3,953.78	-976.88	270.29	267.22	0.59	-0.57	-0.50	
4,210.00	15.01	163.22	4,046.48	-1,001.04	276.49	273.35	1.28	-0.13	-4.91	
4,305.00	15.33	162.87	4,138.17	-1,024.82	283.74	280.52	0.35	0.34	-0.37	
4,401.00	15.22	160.06	4,230.78	-1,048.79	291.78	288.48	0.78	-0.11	-2.93	
4,496.00	15.80	160.31	4,322.32	-1,072.69	300.39	297.02	0.61	0.61	0.26	
4,591.00	14.05	161.56	4,414.11	-1,095.81	308.40	304.95	1.87	-1.84	1.32	
4,687.00	12.28	157.68	4,507.58	-1,116.31	315.96	312.45	2.06	-1.84	-4.04	

# Survey Report

<b>Company:</b>	HighPoint Resources	<b>Local Co-ordinate Reference:</b>	Well ANSCHUTZ EQUUS FARMS FED 5-61-35-6457B
<b>Project:</b>	Weld County, CO (NAD83)	<b>TVD Reference:</b>	KB @ 4496.10usft (Cade 23)
<b>Site:</b>	Sec 34-T05N-R61W	<b>MD Reference:</b>	KB @ 4496.10usft (Cade 23)
<b>Well:</b>	ANSCHUTZ EQUUS FARMS FED 5-61-35-6457B	<b>North Reference:</b>	True
<b>Wellbore:</b>	Wellbore #1	<b>Survey Calculation Method:</b>	Minimum Curvature
<b>Design:</b>	Wellbore #1	<b>Database:</b>	EDM 5000.15 Single User Db

Survey										
Measured Depth (usft)	Inclination (°)	Azimuth (°)	Vertical Depth (usft)	+N/-S (usft)	+E/-W (usft)	Vertical Section (usft)	Dogleg Rate (°/100usft)	Build Rate (°/100usft)	Turn Rate (°/100usft)	
4,781.00	11.12	162.74	4,599.63	-1,134.22	322.45	318.88	1.65	-1.23	5.38	
4,876.00	9.51	164.91	4,693.09	-1,150.54	327.21	323.59	1.74	-1.69	2.28	
4,972.00	7.14	168.09	4,788.08	-1,164.04	330.50	326.85	2.51	-2.47	3.31	
5,067.00	5.05	168.46	4,882.53	-1,173.91	332.56	328.87	2.20	-2.20	0.39	
5,162.00	3.54	174.21	4,977.27	-1,180.93	333.69	329.98	1.65	-1.59	6.05	
5,258.00	2.00	179.82	5,073.15	-1,185.55	334.00	330.27	1.63	-1.60	5.84	
5,354.00	0.09	156.85	5,169.13	-1,187.30	334.03	330.30	2.00	-1.99	-23.93	
5,449.00	0.33	0.93	5,264.13	-1,187.09	334.07	330.33	0.44	0.25	-164.13	
5,544.00	5.41	58.56	5,358.98	-1,184.48	337.89	334.17	5.52	5.35	60.66	
5,579.00	8.25	53.65	5,393.73	-1,182.13	341.32	337.61	8.28	8.11	-14.03	
5,639.00	12.95	56.30	5,452.69	-1,175.85	350.39	346.69	7.87	7.83	4.42	
5,684.00	19.75	72.41	5,495.87	-1,170.74	361.85	358.17	18.03	15.11	35.80	
5,706.53	24.24	77.60	5,516.75	-1,168.60	370.00	366.33	21.69	19.92	23.02	
<b>Cross @ 5706.53' MD</b>										
5,734.61	30.00	81.96	5,541.74	-1,166.38	382.59	378.93	21.69	20.51	15.54	
<b>30° Inclination @ 5734.61' MD</b>										
5,735.00	30.08	82.01	5,542.08	-1,166.35	382.79	379.12	21.69	20.73	12.74	
5,830.00	40.02	91.31	5,619.81	-1,163.73	437.08	433.42	11.85	10.46	9.79	
5,925.00	44.61	92.41	5,690.04	-1,165.83	500.98	497.31	4.89	4.83	1.16	
6,019.00	54.23	91.77	5,751.11	-1,168.40	572.24	568.56	10.25	10.23	-0.68	
6,115.00	64.72	90.73	5,799.81	-1,170.16	654.80	651.12	10.97	10.93	-1.08	
6,159.82	70.00	90.68	5,817.05	-1,170.67	696.15	692.46	11.78	11.78	-0.12	
<b>70° Inclination @ 6159.82' MD</b>										
6,211.00	76.03	90.62	5,832.00	-1,171.22	745.07	741.38	11.78	11.78	-0.11	
6,273.00	86.44	92.69	5,841.43	-1,173.01	806.23	802.54	17.11	16.79	3.34	
6,394.00	88.00	92.77	5,847.30	-1,178.76	926.95	923.24	1.29	1.29	0.07	
6,490.00	88.02	91.67	5,850.63	-1,182.48	1,022.82	1,019.10	1.15	0.02	-1.15	
6,585.00	87.38	91.82	5,854.45	-1,185.37	1,117.69	1,113.96	0.69	-0.67	0.16	
6,681.00	88.41	90.99	5,857.97	-1,187.72	1,213.60	1,209.86	1.38	1.07	-0.86	
6,776.00	89.23	90.88	5,859.93	-1,189.27	1,308.56	1,304.82	0.87	0.86	-0.12	
6,870.00	89.73	90.60	5,860.78	-1,190.49	1,402.55	1,398.81	0.61	0.53	-0.30	
6,966.00	89.68	90.58	5,861.28	-1,191.47	1,498.55	1,494.80	0.06	-0.05	-0.02	
7,061.00	90.39	89.84	5,861.22	-1,191.82	1,593.54	1,589.79	1.08	0.75	-0.78	
7,155.00	89.98	89.22	5,860.92	-1,191.05	1,687.54	1,683.79	0.79	-0.44	-0.66	
7,250.00	89.51	88.87	5,861.34	-1,189.47	1,782.53	1,778.78	0.62	-0.49	-0.37	
7,345.00	90.15	88.99	5,861.62	-1,187.69	1,877.51	1,873.77	0.69	0.67	0.13	
7,440.00	90.29	89.06	5,861.26	-1,186.08	1,972.49	1,968.76	0.16	0.15	0.07	
7,536.00	90.94	89.31	5,860.23	-1,184.71	2,068.48	2,064.75	0.73	0.68	0.26	
7,631.00	90.96	88.90	5,858.65	-1,183.23	2,163.45	2,159.73	0.43	0.02	-0.43	
7,727.00	90.85	89.06	5,857.13	-1,181.52	2,259.43	2,255.70	0.20	-0.11	0.17	
7,823.00	90.73	89.02	5,855.81	-1,179.91	2,355.40	2,351.68	0.13	-0.13	-0.04	
7,919.00	90.59	89.02	5,854.70	-1,178.27	2,451.38	2,447.67	0.15	-0.15	0.00	
8,014.00	91.02	89.35	5,853.37	-1,176.92	2,546.36	2,542.65	0.57	0.45	0.35	



# Survey Report

<b>Company:</b>	HighPoint Resources	<b>Local Co-ordinate Reference:</b>	Well ANSCHUTZ EQUUS FARMS FED 5-61-35-6457B
<b>Project:</b>	Weld County, CO (NAD83)	<b>TVD Reference:</b>	KB @ 4496.10usft (Cade 23)
<b>Site:</b>	Sec 34-T05N-R61W	<b>MD Reference:</b>	KB @ 4496.10usft (Cade 23)
<b>Well:</b>	ANSCHUTZ EQUUS FARMS FED 5-61-35-6457B	<b>North Reference:</b>	True
<b>Wellbore:</b>	Wellbore #1	<b>Survey Calculation Method:</b>	Minimum Curvature
<b>Design:</b>	Wellbore #1	<b>Database:</b>	EDM 5000.15 Single User Db

Survey									
Measured Depth (usft)	Inclination (°)	Azimuth (°)	Vertical Depth (usft)	+N/-S (usft)	+E/-W (usft)	Vertical Section (usft)	Dogleg Rate (°/100usft)	Build Rate (°/100usft)	Turn Rate (°/100usft)
8,110.00	91.18	89.76	5,851.53	-1,176.17	2,642.34	2,638.63	0.46	0.17	0.43
8,205.00	90.82	89.30	5,849.87	-1,175.39	2,737.32	2,733.62	0.61	-0.38	-0.48
8,301.00	89.74	88.12	5,849.40	-1,173.23	2,833.30	2,829.60	1.67	-1.13	-1.23
8,396.00	89.83	90.14	5,849.76	-1,171.79	2,928.28	2,924.58	2.13	0.09	2.13
8,492.00	89.65	90.22	5,850.19	-1,172.09	3,024.28	3,020.58	0.21	-0.19	0.08
8,588.00	89.57	90.39	5,850.85	-1,172.60	3,120.27	3,116.58	0.20	-0.08	0.18
8,684.00	89.62	91.01	5,851.52	-1,173.78	3,216.26	3,212.56	0.65	0.05	0.65
8,780.00	88.96	91.15	5,852.71	-1,175.59	3,312.24	3,308.53	0.70	-0.69	0.15
8,875.00	89.58	90.59	5,853.92	-1,177.03	3,407.22	3,403.51	0.88	0.65	-0.59
8,971.00	90.91	90.12	5,853.51	-1,177.62	3,503.21	3,499.50	1.47	1.39	-0.49
9,066.00	90.49	90.15	5,852.35	-1,177.85	3,598.21	3,594.49	0.44	-0.44	0.03
9,161.00	89.89	90.32	5,852.04	-1,178.24	3,693.21	3,689.49	0.66	-0.63	0.18
9,257.00	89.87	91.91	5,852.24	-1,180.10	3,789.18	3,785.46	1.66	-0.02	1.66
9,352.00	89.56	90.81	5,852.71	-1,182.36	3,884.15	3,880.42	1.20	-0.33	-1.16
9,447.00	90.09	91.10	5,853.00	-1,183.94	3,979.14	3,975.40	0.64	0.56	0.31
9,543.00	92.07	91.97	5,851.19	-1,186.51	4,075.08	4,071.34	2.25	2.06	0.91
9,638.00	91.74	90.87	5,848.03	-1,188.87	4,170.00	4,166.24	1.21	-0.35	-1.16
9,734.00	90.78	91.01	5,845.92	-1,190.44	4,265.96	4,262.20	1.01	-1.00	0.15
9,830.00	89.02	89.54	5,846.09	-1,190.90	4,361.95	4,358.19	2.39	-1.83	-1.53
9,926.00	87.74	89.59	5,848.80	-1,190.17	4,457.91	4,454.15	1.33	-1.33	0.05
10,021.00	88.80	89.73	5,851.67	-1,189.61	4,552.87	4,549.11	1.13	1.12	0.15
10,117.00	87.70	90.13	5,854.60	-1,189.49	4,648.82	4,645.06	1.22	-1.15	0.42
10,213.00	88.48	88.95	5,857.80	-1,188.72	4,744.76	4,741.00	1.47	0.81	-1.23
10,308.00	90.66	88.55	5,858.52	-1,186.65	4,839.73	4,835.98	2.33	2.29	-0.42
10,404.00	90.34	87.35	5,857.68	-1,183.22	4,935.66	4,931.92	1.29	-0.33	-1.25
10,500.00	92.08	87.02	5,855.65	-1,178.50	5,031.52	5,027.79	1.84	1.81	-0.34
10,594.00	91.75	86.77	5,852.51	-1,173.41	5,125.33	5,121.62	0.44	-0.35	-0.27
10,686.00	91.81	88.92	5,849.65	-1,169.96	5,217.22	5,213.51	2.34	0.07	2.34
10,778.00	91.56	89.36	5,846.95	-1,168.58	5,309.16	5,305.47	0.55	-0.27	0.48
10,870.00	91.36	89.17	5,844.60	-1,167.40	5,401.13	5,397.43	0.30	-0.22	-0.21
10,962.00	91.63	88.90	5,842.20	-1,165.85	5,493.08	5,489.39	0.41	0.29	-0.29
11,054.00	90.21	89.50	5,840.73	-1,164.56	5,585.06	5,581.37	1.68	-1.54	0.65
11,139.94	89.71	90.41	5,840.78	-1,164.49	5,671.00	5,667.31	1.20	-0.58	1.05
<b>Cross @ 11139.94' MD</b>									
11,146.00	89.68	90.47	5,840.81	-1,164.54	5,677.06	5,673.37	1.20	-0.58	1.05
11,238.00	90.73	91.50	5,840.49	-1,166.12	5,769.04	5,765.35	1.60	1.14	1.12
11,329.00	91.11	92.88	5,839.02	-1,169.60	5,859.96	5,856.26	1.57	0.42	1.52
11,421.00	89.75	90.98	5,838.33	-1,172.69	5,951.90	5,948.19	2.54	-1.48	-2.07
11,513.00	88.82	90.13	5,839.48	-1,173.59	6,043.89	6,040.17	1.37	-1.01	-0.92
11,605.00	88.59	90.15	5,841.56	-1,173.81	6,135.86	6,132.14	0.25	-0.25	0.02
11,697.00	88.31	89.64	5,844.05	-1,173.64	6,227.83	6,224.11	0.63	-0.30	-0.55
11,789.00	89.24	88.79	5,846.02	-1,172.38	6,319.80	6,316.08	1.37	1.01	-0.92

## Survey Report

<b>Company:</b>	HighPoint Resources	<b>Local Co-ordinate Reference:</b>	Well ANSCHUTZ EQUUS FARMS FED 5-61-35-6457B
<b>Project:</b>	Weld County, CO (NAD83)	<b>TVD Reference:</b>	KB @ 4496.10usft (Cade 23)
<b>Site:</b>	Sec 34-T05N-R61W	<b>MD Reference:</b>	KB @ 4496.10usft (Cade 23)
<b>Well:</b>	ANSCHUTZ EQUUS FARMS FED 5-61-35-6457B	<b>North Reference:</b>	True
<b>Wellbore:</b>	Wellbore #1	<b>Survey Calculation Method:</b>	Minimum Curvature
<b>Design:</b>	Wellbore #1	<b>Database:</b>	EDM 5000.15 Single User Db

Survey										
Measured Depth (usft)	Inclination (°)	Azimuth (°)	Vertical Depth (usft)	+N/-S (usft)	+E/-W (usft)	Vertical Section (usft)	Dogleg Rate (°/100usft)	Build Rate (°/100usft)	Turn Rate (°/100usft)	
11,881.00	89.31	89.14	5,847.18	-1,170.72	6,411.77	6,408.06	0.39	0.08	0.38	
11,973.00	89.32	88.29	5,848.28	-1,168.66	6,503.74	6,500.04	0.92	0.01	-0.92	
12,069.00	90.35	90.76	5,848.56	-1,167.86	6,599.73	6,596.03	2.79	1.07	2.57	
12,164.00	91.45	90.45	5,847.06	-1,168.86	6,694.71	6,691.01	1.20	1.16	-0.33	
12,260.00	90.50	90.73	5,845.43	-1,169.85	6,790.69	6,786.98	1.03	-0.99	0.29	
12,355.00	89.08	90.22	5,845.78	-1,170.64	6,885.69	6,881.97	1.59	-1.49	-0.54	
12,449.00	89.89	88.62	5,846.62	-1,169.69	6,979.67	6,975.96	1.91	0.86	-1.70	
12,543.00	91.45	88.01	5,845.52	-1,166.92	7,073.62	7,069.92	1.78	1.66	-0.65	
12,639.00	89.69	90.42	5,844.57	-1,165.61	7,169.60	7,165.90	3.11	-1.83	2.51	
12,734.00	87.63	90.03	5,846.79	-1,165.98	7,264.57	7,260.87	2.21	-2.17	-0.41	
12,829.00	90.49	90.27	5,848.35	-1,166.23	7,359.54	7,355.84	3.02	3.01	0.25	
12,924.00	90.01	89.94	5,847.94	-1,166.41	7,454.54	7,450.84	0.61	-0.51	-0.35	
13,019.00	90.85	90.96	5,847.22	-1,167.15	7,549.53	7,545.83	1.39	0.88	1.07	
13,114.00	89.59	89.74	5,846.86	-1,167.73	7,644.53	7,640.82	1.85	-1.33	-1.28	
13,210.00	91.34	90.16	5,846.08	-1,167.65	7,740.52	7,736.81	1.87	1.82	0.44	
13,305.00	91.25	89.52	5,843.93	-1,167.38	7,835.50	7,831.79	0.68	-0.09	-0.67	
13,400.00	90.28	89.11	5,842.66	-1,166.25	7,930.48	7,926.78	1.11	-1.02	-0.43	
13,495.00	90.97	89.64	5,841.63	-1,165.21	8,025.47	8,021.77	0.92	0.73	0.56	
13,591.00	90.40	90.21	5,840.48	-1,165.09	8,121.46	8,117.76	0.84	-0.59	0.59	
13,686.00	89.84	89.77	5,840.28	-1,165.07	8,216.46	8,212.76	0.75	-0.59	-0.46	
13,780.00	91.91	90.35	5,838.84	-1,165.17	8,310.44	8,306.74	2.29	2.20	0.62	
13,875.00	93.76	90.81	5,834.15	-1,166.13	8,405.32	8,401.61	2.01	1.95	0.48	
13,970.00	90.77	88.75	5,830.39	-1,165.76	8,500.23	8,496.52	3.82	-3.15	-2.17	
14,066.00	89.50	89.63	5,830.17	-1,164.40	8,596.21	8,592.51	1.61	-1.32	0.92	
14,161.00	89.36	90.40	5,831.11	-1,164.43	8,691.21	8,687.51	0.82	-0.15	0.81	
14,255.00	87.48	89.85	5,833.70	-1,164.63	8,785.17	8,781.46	2.08	-2.00	-0.59	
14,351.00	89.47	89.64	5,836.26	-1,164.21	8,881.13	8,877.43	2.08	2.07	-0.22	
14,446.00	89.93	90.76	5,836.75	-1,164.54	8,976.12	8,972.42	1.27	0.48	1.18	
14,542.00	89.44	92.33	5,837.28	-1,167.13	9,072.08	9,068.37	1.71	-0.51	1.64	
14,637.00	89.85	90.95	5,837.87	-1,169.85	9,167.04	9,163.32	1.52	0.43	-1.45	
14,732.00	89.65	95.68	5,838.29	-1,175.34	9,261.85	9,258.12	4.98	-0.21	4.98	
14,827.00	90.49	94.89	5,838.17	-1,184.09	9,356.45	9,352.68	1.21	0.88	-0.83	
14,922.00	91.15	90.40	5,836.81	-1,188.47	9,451.31	9,447.53	4.78	0.69	-4.73	
15,017.00	90.75	87.87	5,835.23	-1,187.04	9,546.28	9,542.50	2.70	-0.42	-2.66	
15,112.00	89.47	86.52	5,835.05	-1,182.39	9,641.16	9,637.40	1.96	-1.35	-1.42	
15,208.00	89.29	87.26	5,836.09	-1,177.18	9,737.01	9,733.27	0.79	-0.19	0.77	
15,303.00	88.84	88.13	5,837.64	-1,173.36	9,831.92	9,828.19	1.03	-0.47	0.92	
15,399.00	89.88	88.65	5,838.71	-1,170.66	9,927.88	9,924.15	1.21	1.08	0.54	
15,494.00	89.68	90.64	5,839.08	-1,170.07	10,022.87	10,019.15	2.11	-0.21	2.09	
15,545.00	89.52	94.55	5,839.43	-1,172.38	10,073.81	10,070.07	7.67	-0.31	7.67	
15,589.00	89.65	97.29	5,839.75	-1,176.92	10,117.57	10,113.82	6.23	0.30	6.23	
15,685.00	89.28	89.39	5,840.65	-1,182.51	10,213.32	10,209.56	8.24	-0.39	-8.23	

## Survey Report

<b>Company:</b>	HighPoint Resources	<b>Local Co-ordinate Reference:</b>	Well ANSCHUTZ EQUUS FARMS FED 5-61-35-6457B
<b>Project:</b>	Weld County, CO (NAD83)	<b>TVD Reference:</b>	KB @ 4496.10usft (Cade 23)
<b>Site:</b>	Sec 34-T05N-R61W	<b>MD Reference:</b>	KB @ 4496.10usft (Cade 23)
<b>Well:</b>	ANSCHUTZ EQUUS FARMS FED 5-61-35-6457B	<b>North Reference:</b>	True
<b>Wellbore:</b>	Wellbore #1	<b>Survey Calculation Method:</b>	Minimum Curvature
<b>Design:</b>	Wellbore #1	<b>Database:</b>	EDM 5000.15 Single User Db

Survey										
Measured Depth (usft)	Inclination (°)	Azimuth (°)	Vertical Depth (usft)	+N/-S (usft)	+E/-W (usft)	Vertical Section (usft)	Dogleg Rate (°/100usft)	Build Rate (°/100usft)	Turn Rate (°/100usft)	
15,781.00	88.08	86.18	5,842.86	-1,178.80	10,309.21	10,305.46	3.57	-1.25	-3.34	
15,876.00	86.34	86.13	5,847.49	-1,172.44	10,403.88	10,400.15	1.83	-1.83	-0.05	
15,967.00	84.46	86.60	5,854.78	-1,166.69	10,494.40	10,490.69	2.13	-2.07	0.52	
<b>Last MWD Survey @ 15967' MD</b>										
16,035.00	84.46	86.60	5,861.35	-1,162.67	10,561.97	10,558.26	0.00	0.00	0.00	
<b>Projection to TD @ 16035' MD 486' FSL/ 403.6' FEL</b>										

Design Targets										
Target Name - hit/miss target - Shape	Dip Angle (°)	Dip Dir. (°)	TVD (usft)	+N/-S (usft)	+E/-W (usft)	Northing (usft)	Easting (usft)	Latitude	Longitude	
Cross @ 5706.53' MD - actual wellpath hits target center - Point	0.00	0.00	5,516.75	-1,168.60	370.00	1,373,614.98	3,366,337.29	40.351521	-104.185547	
30° Inclination @ 5734.6 - actual wellpath misses target center by 0.01usft at 5734.61usft MD (5541.74 TVD, -1166.38 N, 382.59 E) - Point	0.00	0.00	5,541.73	-1,166.37	382.59	1,373,617.39	3,366,349.85	40.351527	-104.185502	
70° Inclination @ 6159.8 - actual wellpath hits target center - Point	0.00	0.00	5,817.05	-1,170.67	696.14	1,373,617.73	3,366,663.43	40.351515	-104.184377	
Cross @ 11139.94' MD - actual wellpath hits target center - Point	0.00	0.00	5,840.78	-1,164.49	5,671.00	1,373,697.58	3,371,637.65	40.351531	-104.166527	

Design Annotations					
Measured Depth (usft)	Vertical Depth (usft)	Local Coordinates			
		+N/-S (usft)	+E/-W (usft)	Comment	
152.00	152.00	-0.71	0.36	First MWD Survey @ 152.00' MD	
5,706.53	5,516.75	-1,168.60	370.00	Cross @ 5706.53' MD	
5,734.61	5,541.74	-1,166.38	382.59	30° Inclination @ 5734.61' MD	
6,159.82	5,817.05	-1,170.67	696.15	70° Inclination @ 6159.82' MD	
11,139.94	5,840.78	-1,164.49	5,671.00	Cross @ 11139.94' MD	
15,967.00	5,854.78	-1,166.69	10,494.40	Last MWD Survey @ 15967' MD	
16,035.00	5,861.35	-1,162.67	10,561.97	Projection to TD @ 16035' MD 486' FSL/ 403.6' FEL	

Checked By: _____	Approved By: _____	Date: _____
-------------------	--------------------	-------------