



# HighPoint Operating Corporation

Anschutz Equus Farms 5-61-35-6457B

API # 05-123-49224

Intermediate

October 15, 2019

Quote #: QUO-37690-L2F0L7

Execution #: EXC-21818-H9T9Y602



# HighPoint Operating Corporation

Attention: Mr. Matthew Schwartz | (303) 312-8142 | [mschwartz@hpres.com](mailto:mschwartz@hpres.com)

HighPoint Operating Corporation | 1099 18th St. | Denver, CO. 80202

---

Dear Mr. Matthew Schwartz,

Thank you for the opportunity to provide cementing services on this well. BJ Services strives to achieve complete customer satisfaction. If you have any questions regarding the services or data provided, please contact BJ Services at any time.

Sincerely,  
Jason Creel  
Field Engineer I | (307) 365-9038 | [jason.creel@bjservices.com](mailto:jason.creel@bjservices.com)

Field Office 1716 East Allison Rd., Cheyenne WY, 82007  
Phone: (307) 459-6487

Sales Office 999 18th St. Suite 1200 Denver, CO 80202  
Phone: (281) 408-2361

---

# BJ Cementing Treatment Report

SERVICE SUPERVISOR	Edgar Rodriguez	RIG	CADE 23
CLIENT FIELD REPRESENTATIVE	Dustin Smith	COUNTY	WELD
DISTRICT	Cheyenne, WY	STATE / PROVINCE	CO
SERVICE	Cementing		

## WELL GEOMETRY

TYPE	ID (in)	OD (in)	WEIGHT (lb/ft)	MD (ft)	TVD (ft)	EXCESS (%)	GRADE
Open Hole	8.75	0.00	0.00	6,335.00	6,335.00	20.00	
Previous Casing	8.92	9.63	36.00	988.00	988.00		
Casing	6.37	7.00	23.00	6,298.00	6,298.00		J-55

## HARDWARE

Bottom Plug Used?	No	Tool Type	Float Collar
Top Plug Used?	Yes	Tool Depth (ft)	6,251.00
Top Plug Provided By	Non BJ	Max Casing Pressure - Rated (psi)	4,360.00
Top Plug Size	7.000	Max Casing Pressure - Operated (psi)	1600.00
Centralizers Used	Yes	Pipe Movement	None
Centralizers Quantity	13.00	Job Pumped Through	No Manifold
Centralizers Type	Bow	Top Connection Thread	8RD
Landing Collar Depth (ft)	6,251	Top Connection Size	7

## CIRCULATION PRIOR TO JOB

Well Circulated By	Rig	PV Mud Out	7
Circulation Prior to Job	Yes	YP Mud In	8
Circulation Time (min)	90.00	YP Mud Out	8
Circulation Rate (bpm)	5.00	Solids Present at End of Circulation	No
Circulation Volume (bbls)	500.00	10 sec SGS	3
Lost Circulation Prior to Cement Job	No	10 min SGS	7
Mud Density In (ppg)	10.10	30 min SGS	8
Mud Density Out (ppg)	10.10	Flare Prior to / during the Cement Job	No
PV Mud In	7	Gas Present	No

Client: HighPoint Operating Corporation

Well: ANSCHUTZ EQUUS FARMS #5-61-35-6457B

Well API: 05-123-49224

Start Date: 10/15/2019

End Date: 10/15/2019

## TEMPERATURE

Ambient Temperature (°F)	65.00	Slurry Cement Temperature (°F)	65.00
Mix Water Temperature (°F)	65.00		

## FLUID DETAILS

FLUID TYPE	FLUID NAME	DENSITY (ppg)	YIELD (Cu Ft/sk)	H <sub>2</sub> O REQ (gals/sk)	PLN TOP FLD (ft)	LENGTH (ft)	VOL (sk)	VOL (Cu Ft)	VOL (bbls)
Spacer / Pre Flush / Flush	Fresh Water	8.3300			2,006.00				40.0000
Lead Slurry	BJCem I100.3.01C	12.5000	2.0726	11.83	3,500.00	2,300.00	200	415.0000	73.8000
Tail Slurry	BJCem I100.6.01C	15.8000	1.1560	4.98	5,800.00	500.00	90	105.0000	18.5000
Displacement Final	Water	8.3300			0.00			0.0000	246.2000

FLUID TYPE	FLUID NAME	COMPONENT	CONCENTRATION	UOM
Lead Slurry	BJCem I100.3.01C	BONDING AGENT, BA-60	0.3000	BWOB
Lead Slurry	BJCem I100.3.01C	RETARDER, SR-20	0.3000	BWOB
Lead Slurry	BJCem I100.3.01C	FLUID LOSS, FL-24	0.3000	BWOB
Lead Slurry	BJCem I100.3.01C	FOAM PREVENTER, FP-25	0.3000	BWOB
Lead Slurry	BJCem I100.3.01C	CEMENT, ASTM TYPE III	100.0000	PCT
Tail Slurry	BJCem I100.6.01C	DISPERSANT, CD-31	0.2000	BWOB
Tail Slurry	BJCem I100.6.01C	BONDING AGENT, BA-60	0.2000	BWOB
Tail Slurry	BJCem I100.6.01C	FOAM PREVENTER, FP-25	0.3000	BWOB
Tail Slurry	BJCem I100.6.01C	RETARDER, R-6	0.2000	BWOB
Tail Slurry	BJCem I100.6.01C	CEMENT, CLASS G	100.0000	PCT
Tail Slurry	BJCem I100.6.01C	FLUID LOSS, FL-24	0.2000	BWOB

## DISPLACEMENT AND END OF JOB SUMMARY

Displaced By	BJ	Amt of Cement Returned / Reversed	0.00
Calculated Displacement Vol (bbls)	246.00	Method Used to Verify Returns	Visual
Actual Displacement Vol (bbls)	246.00	Amt of Spacer to Surface	0.00
Did Float Hold?	Yes	Pressure Left on Casing (psi)	0.00
Bump Plug	Yes	Amt Bled Back After Job	1.50
Bump Plug Pressure (psi)	1600.00	Total Volume Pumped (bbls)	379.00
Were Returns Planned at Surface	Yes	Top Out Cement Spotted	No
Cement Returns During Job	None	Lost Circulation During Cement Job	No

# BJ Cementing Event Log

Intermediate - Cheyenne, WY - Edgar Rodriguez

SEQ	START DATE / TIME	EVENT	DENSITY (ppg)	PUMP RATE (bpm)	PUMP VOL (bbls)	PIPE PRESSURE (psi)	COMMENTS
1	10/15/2019 10:00	Callout					CALLED OUT TO BE ON LOCATION @15:00
2	10/15/2019 12:30	Depart for Location					LEAVE YARD FOR LOCATION
3	10/15/2019 14:45	Arrive on Location					ARRIVE ON LOCATION
4	10/15/2019 14:45	Other (See comment)					GET NUMBERS FROM CUSTOMER REP / CASING ON BOTTOM / CIRCULATING
5	10/15/2019 14:50	STEACS Briefing					STEACS BRIEFING
6	10/15/2019 14:55	Spot Units					SPOT EQUIPMENT
7	10/15/2019 15:00	STEACS Briefing					STEACS BRIEFING
8	10/15/2019 15:05	Rig Up					RIG UP
9	10/15/2019 15:30	STEACS Briefing					JOB STEACS BRIEFING
10	10/15/2019 15:40	Rig Up					SWITCH LINES TO PUMP
11	10/15/2019 15:44	Other (See comment)	8.3000	3.00	3.00	170.00	LOAD LINES
12	10/15/2019 15:45	Pressure Test	8.3000	1.00	1.00	4000.00	TEST LINES
13	10/15/2019 15:48	Pump Spacer	8.3000	6.00	40.00	500.00	PUMPING FRESH WATER
14	10/15/2019 15:55	Pump Lead Cement	12.5000	6.00	74.00	600.00	PUMPING 200 SKS LEAD TYPE III CEMENT / 12.5 LBS/GAL -- 2.0726 CUFT/SK -- 11.83 GAL/SK / <b>TOP OF LEAD 2917'</b>
15	10/15/2019 16:07	Pump Tail Cement	15.8000	4.00	18.50	400.00	PUMPING 90 SKS TAIL CLASS G CEMENT / 15.8 LBS/GAL -- 1.1560 CUFT/SK -- 4.98 GAL/SK / <b>TOP OF TAIL 5681'</b>
16	10/15/2019 16:12	End Pumping					SHUTDOWN
17	10/15/2019 16:13	Drop Top Plug					DROP TOP PLUG
18	10/15/2019 16:17	Pump Displacement	8.3000	7.00		250.00	PUMPING DISPLACEMENT
19	10/15/2019 16:22	Pump Displacement	8.3000	8.00	55.00	800.00	DISPLACEMENT REACHED CEMENT

Client: HighPoint Operating Corporation

Well Name / API: ANSCHUTZ EQUUS FARMS  
#5-61-35-6457B / 05-123-49224

Well 6335  
MD:



Quote #: QUO-37690-L2F0L7

Plan #: ORD-21818-H9T9Y6

Execution #: EXC-21818-H9T9Y602

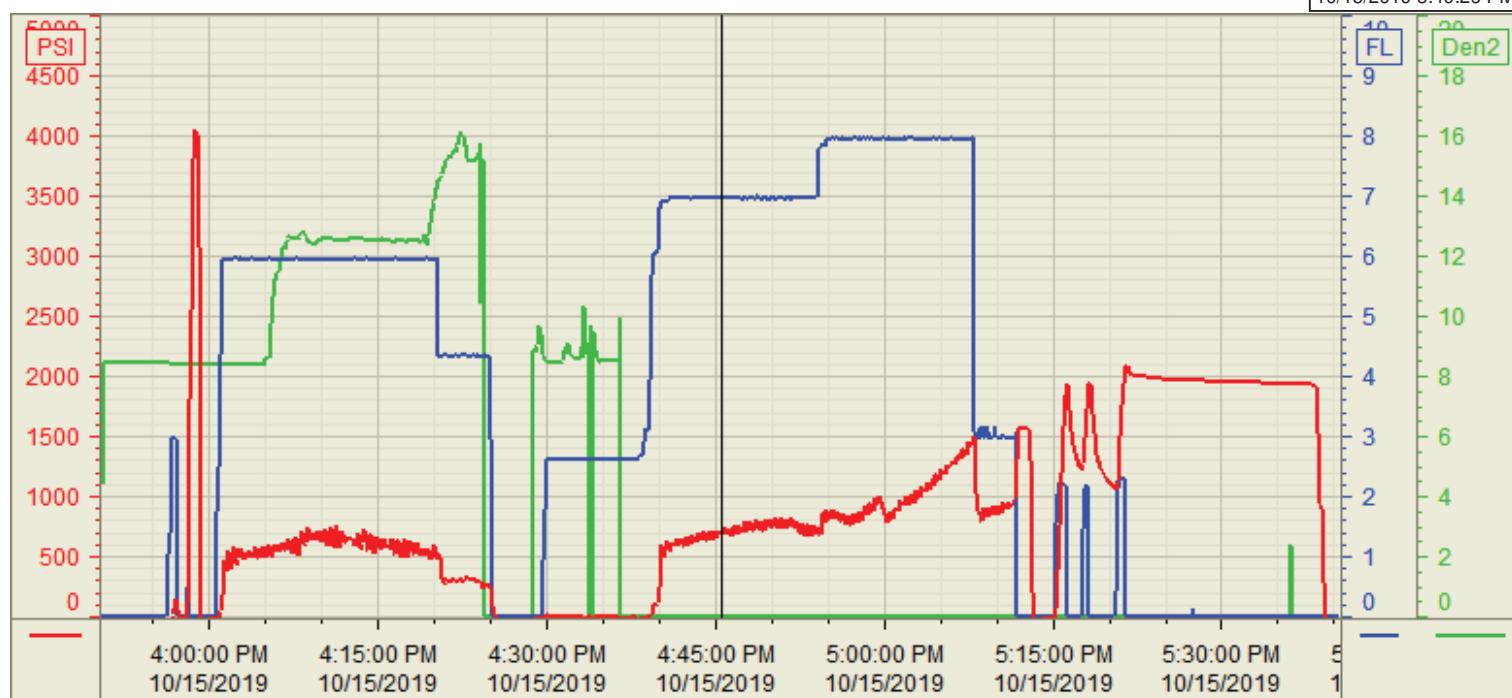
20	10/15/2019 16:55	Pump Displacement	8.3000	3.00	230.00	1100.00	SLOW RATE TO BUMP PLUG
21	10/15/2019 16:59	Land Plug	8.3000	3.00	246.00	1600.00	PLUG LANDED AT 1000 PSI AND TOOK UP TO 1600 PSI
22	10/15/2019 17:01	Check Floats					FLOATS HOLDING / 1.5 BBLS BACK
23	10/15/2019 17:03	Pressure Test				1980.00	PERFORM CASING TEST
24	10/15/2019 17:10	Pressure Test				1980.00	CASING TEST SUCCESSFULL
25	10/15/2019 17:25	End Pumping					END JOB / FULL CIRCULATION ENTIRE JOB
26	10/15/2019 17:25	STEACS Briefing					STEACS BRIEFING
27	10/15/2019 17:30	Rig Down					RIG DOWN
28	10/15/2019 18:00	Leave Location					CREW LEAVE LOCATION

Customer: Highpoint Operating  
Well Number: 5-61-35-6457B  
Lease Info: Anschutz Equus Farms



Print Date/Time

10/15/2019 5:49:26 PM



	Name	Y value	X value/time stamp	Tag name Y
1	DS - Press (PSI)	691.5 i.	10/15/2019 4:45:30 PM i.	Cementer\DS_DISCHARGE_PRESS_DIAL
2	Combined pump rate	6.97	10/15/2019 4:45:31 PM	Cementer\Flow_Combined
3	re circdensity	0.01 i.	10/15/2019 4:45:30 PM i.	Cementer\DENSITY_ACTUAL_RATE
4				
5				

Source: Control1 5:49:26 PM