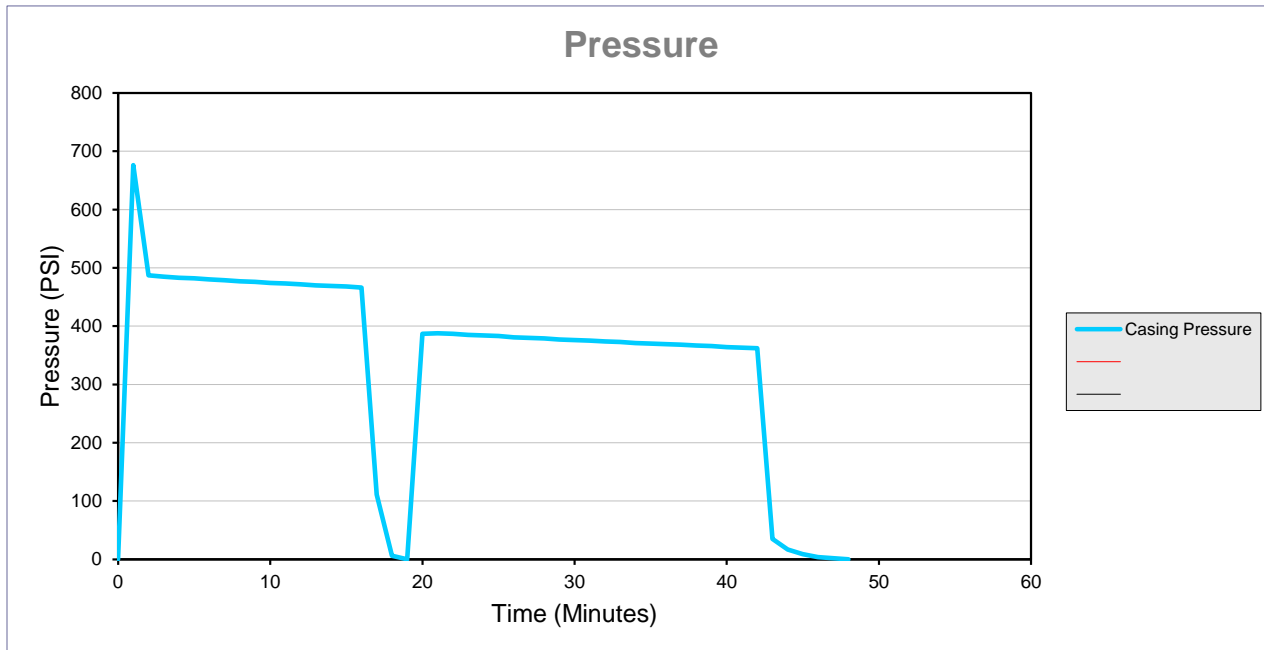


Data Collection Report

Gauge Information	
Serial Number	814604
Model	15KPSIXP2I
Message Store	-----
Units	PSI

Run Info	
Start Time	12/19/19 12:51:45 PM
Stop Time	12/19/19 1:40:04 PM
Logging Interval	60
Lease: WPF III A18-07 API: 05-123-26642	



Serial Number 814604
 Model 15KPSIXP2I
 Units PSI
 Firmware Version R0324 Message Store -----
 Run Index 7
 Logging Type Actual
 Logging Interval 60
 Start Time 12/19/2019 12:51
 Stop Time 12/19/2019 13:40
 Time Casing Pressure

Pressure (PSI)

Time	Pressure (PSI)	Event	Event Date	Time (hours)	Time (minutes)	Elapsed Time	Timestamp
0		Battery OK		0.00	0.00	0:00:00	12/19/19 12:51:45
0		Logging Interval, 60		0.00	0.00	0:00:00	12/19/19 12:51:45
0		Tare, -2		0.00	0.00	0:00:00	12/19/19 12:51:45
0	0			0.00	0.00	0:00:00	12/19/19 12:51:45
60	676			0.02	1.00	0:01:00	12/19/19 12:52:45
120	487			0.03	2.00	0:02:00	12/19/19 12:53:45
180	485			0.05	3.00	0:03:00	12/19/19 12:54:45
240	483			0.07	4.00	0:04:00	12/19/19 12:55:45
300	482			0.08	5.00	0:05:00	12/19/19 12:56:45
360	480			0.10	6.00	0:06:00	12/19/19 12:57:45
420	479			0.12	7.00	0:07:00	12/19/19 12:58:45
480	477			0.13	8.00	0:08:00	12/19/19 12:59:45
540	476			0.15	9.00	0:09:00	12/19/19 13:00:45
600	474			0.17	10.00	0:10:00	12/19/19 13:01:45
660	473			0.18	11.00	0:11:00	12/19/19 13:02:45
720	472			0.20	12.00	0:12:00	12/19/19 13:03:45
780	470			0.22	13.00	0:13:00	12/19/19 13:04:45
840	469			0.23	14.00	0:14:00	12/19/19 13:05:45
900	468			0.25	15.00	0:15:00	12/19/19 13:06:45
960	466			0.27	16.00	0:16:00	12/19/19 13:07:45
1020	111			0.28	17.00	0:17:00	12/19/19 13:08:45
1080	6			0.30	18.00	0:18:00	12/19/19 13:09:45
1140	0			0.32	19.00	0:19:00	12/19/19 13:10:45
1200	387			0.33	20.00	0:20:00	12/19/19 13:11:45
1260	388			0.35	21.00	0:21:00	12/19/19 13:12:45
1320	387			0.37	22.00	0:22:00	12/19/19 13:13:45
1380	385			0.38	23.00	0:23:00	12/19/19 13:14:45
1440	384			0.40	24.00	0:24:00	12/19/19 13:15:45
1500	383			0.42	25.00	0:25:00	12/19/19 13:16:45
1560	381			0.43	26.00	0:26:00	12/19/19 13:17:45
1620	380			0.45	27.00	0:27:00	12/19/19 13:18:45
1680	379			0.47	28.00	0:28:00	12/19/19 13:19:45
1740	377			0.48	29.00	0:29:00	12/19/19 13:20:45
1800	376			0.50	30.00	0:30:00	12/19/19 13:21:45
1860	375			0.52	31.00	0:31:00	12/19/19 13:22:45
1920	374			0.53	32.00	0:32:00	12/19/19 13:23:45
1980	373			0.55	33.00	0:33:00	12/19/19 13:24:45
2040	371			0.57	34.00	0:34:00	12/19/19 13:25:45
2100	370			0.58	35.00	0:35:00	12/19/19 13:26:45
2160	369			0.60	36.00	0:36:00	12/19/19 13:27:45
2220	368			0.62	37.00	0:37:00	12/19/19 13:28:45
2280	367			0.63	38.00	0:38:00	12/19/19 13:29:45
2340	366			0.65	39.00	0:39:00	12/19/19 13:30:45
2400	364			0.67	40.00	0:40:00	12/19/19 13:31:45
2460	363			0.68	41.00	0:41:00	12/19/19 13:32:45
2520	362			0.70	42.00	0:42:00	12/19/19 13:33:45
2580	35			0.72	43.00	0:43:00	12/19/19 13:34:45
2640	17			0.73	44.00	0:44:00	12/19/19 13:35:45
2700	9			0.75	45.00	0:45:00	12/19/19 13:36:45
2760	4			0.77	46.00	0:46:00	12/19/19 13:37:45
2820	2			0.78	47.00	0:47:00	12/19/19 13:38:45
2880	0			0.80	48.00	0:48:00	12/19/19 13:39:45