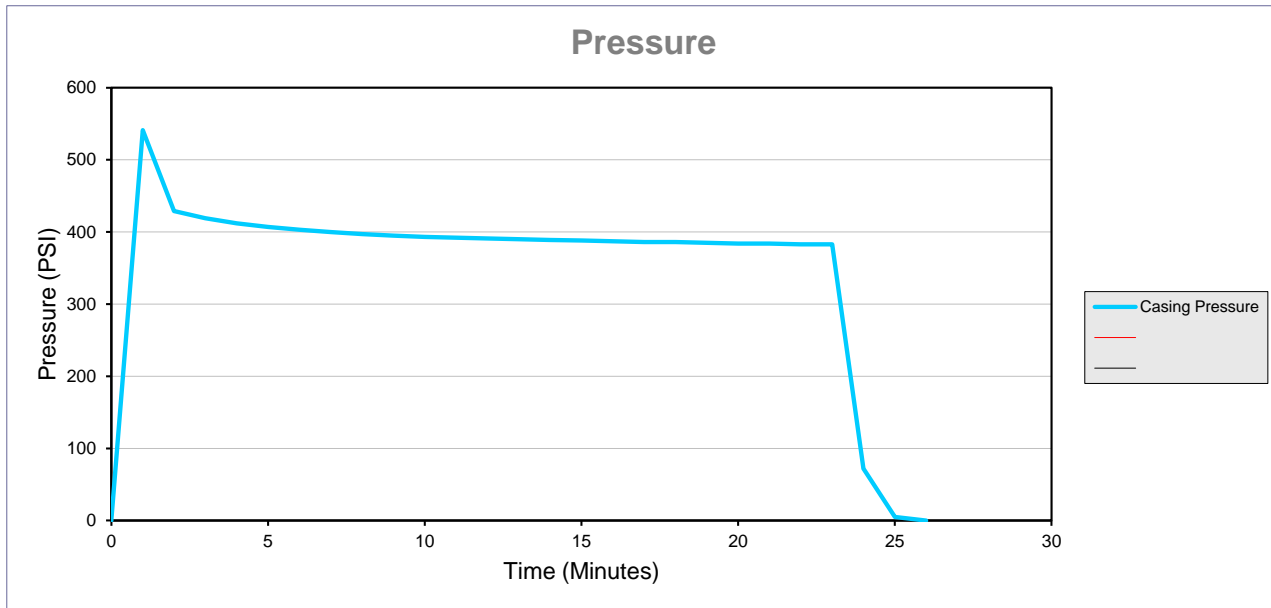


## Data Collection Report

Gauge Information	
Serial Number	814604
Model	15KPSIXP2I
Message Store	-----
Units	PSI

Run Info	
Start Time	12/19/19 8:24:36 AM
Stop Time	12/19/19 8:50:44 AM
Logging Interval	60
Lease: HOWARD USX A09-19      API: 05-123-33520	



Serial Number 814604  
 Model 15KPSIXP2I  
 Units PSI  
 Firmware Version R0324 Message Store -----  
 Run Index 3  
 Logging Type Actual  
 Logging Interval 60  
 Start Time 12/19/2019 8:24  
 Stop Time 12/19/2019 8:50  
 Time Casing Pressure

Pressure (PSI)

Time	Pressure (PSI)	Event	Event Date	Time (hours)	Time (minutes)	Elapsed Time	Timestamp
0		Battery OK		0.00	0.00	0:00:00	12/19/19 8:24:36
0		Logging Interval, 60		0.00	0.00	0:00:00	12/19/19 8:24:36
0		Tare, -3		0.00	0.00	0:00:00	12/19/19 8:24:36
0	0			0.00	0.00	0:00:00	12/19/19 8:24:36
60	541			0.02	1.00	0:01:00	12/19/19 8:25:36
120	429			0.03	2.00	0:02:00	12/19/19 8:26:36
180	419			0.05	3.00	0:03:00	12/19/19 8:27:36
240	412			0.07	4.00	0:04:00	12/19/19 8:28:36
300	407			0.08	5.00	0:05:00	12/19/19 8:29:36
360	403			0.10	6.00	0:06:00	12/19/19 8:30:36
420	400			0.12	7.00	0:07:00	12/19/19 8:31:36
480	397			0.13	8.00	0:08:00	12/19/19 8:32:36
540	395			0.15	9.00	0:09:00	12/19/19 8:33:36
600	393			0.17	10.00	0:10:00	12/19/19 8:34:36
660	392			0.18	11.00	0:11:00	12/19/19 8:35:36
720	391			0.20	12.00	0:12:00	12/19/19 8:36:36
780	390			0.22	13.00	0:13:00	12/19/19 8:37:36
840	389			0.23	14.00	0:14:00	12/19/19 8:38:36
900	388			0.25	15.00	0:15:00	12/19/19 8:39:36
960	387			0.27	16.00	0:16:00	12/19/19 8:40:36
1020	386			0.28	17.00	0:17:00	12/19/19 8:41:36
1080	386			0.30	18.00	0:18:00	12/19/19 8:42:36
1140	385			0.32	19.00	0:19:00	12/19/19 8:43:36
1200	384			0.33	20.00	0:20:00	12/19/19 8:44:36
1260	384			0.35	21.00	0:21:00	12/19/19 8:45:36
1320	383			0.37	22.00	0:22:00	12/19/19 8:46:36
1380	383			0.38	23.00	0:23:00	12/19/19 8:47:36
1440	72			0.40	24.00	0:24:00	12/19/19 8:48:36
1500	5			0.42	25.00	0:25:00	12/19/19 8:49:36
1560	0			0.43	26.00	0:26:00	12/19/19 8:50:36