

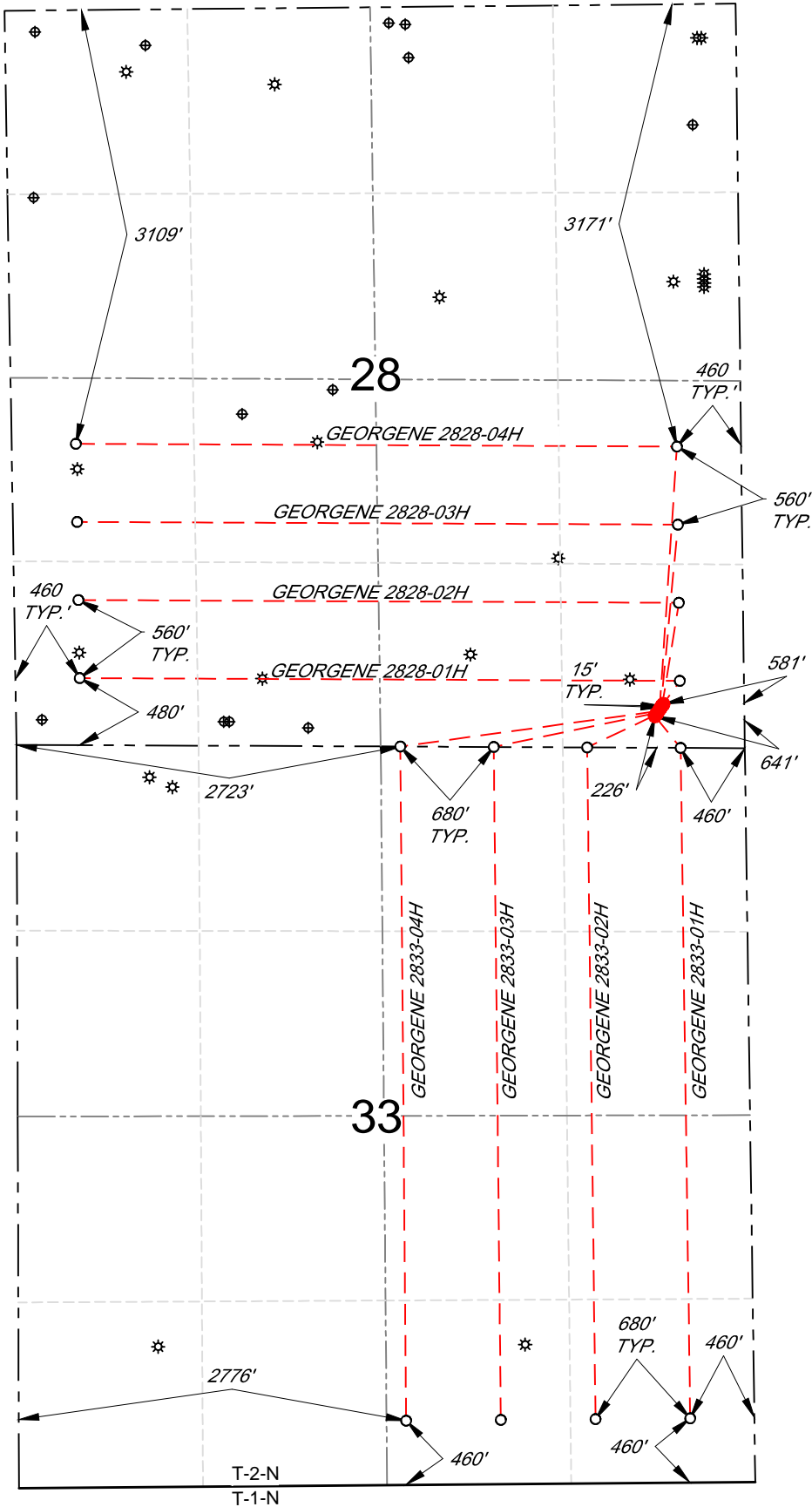
MULTI-WELL PLAN

SHL SE/4 SE/4, SECTION 28, TOWNSHIP 2-N, RANGE 64-W  
LPL SE/4 SE/4 NE/4 SE/4, SECTION 28, TOWNSHIP 2-N, RANGE 64-W  
LPL SE/4 SE/4 SW/4 SE/4, SECTION 33, TOWNSHIP 2-N, RANGE 64-W  
BHL SW/4 SW/4 NW/4 SW/4, SECTION 28, TOWNSHIP 2-N, RANGE 64-W  
BHL SE/4 SE/4 SW/4 SE/4, SECTION 33, TOWNSHIP 2-N, RANGE 64-W  
WELD COUNTY, COLORADO



LEGEND

- SURFACE HOLE LOCATION
- LANDING POINT
- BOTTOM HOLE LOCATION
- ✱ WELLHEAD
- ⊕ WATER WELL



VERDAD RESOURCES  
GEORGENE 2828 01H-04H  
GEORGENE 2833 01H-04H  
JOB NO. 128300-128301

MAPP	12/18/2019	REVISION:	
SHEET :	1 OF 1	INT	DATE
FILE:CD_GEORGENE_2828_2833_MW			

NOTE  
This is not a land survey  
nor land survey plat.

