



# Bonanza Creek Energy

North Platte 11-14-28HNC

API # 05-123-47010

## Production

9/25/2018

Quote #: 18528

Execution #: 11391



## Bonanza Creek Energy

Attention: Mr. Adam Conry | (303) 883.3351 | [AConry@bonanzacrk.com](mailto:AConry@bonanzacrk.com)

Bonanza Creek Energy | 410 17th St Suite 1400 | Denver, CO. 80202

---

Dear Mr. Adam Conry,

Thank you for the opportunity to provide cementing services on this well. BJ Services strives to achieve complete customer satisfaction. If you have any questions regarding the services or data provided, please contact BJ Services at any time.

Sincerely,  
Gage Putnam  
Field Engineer I | (307) 887-4243 | [Gage.Putnam@bjservices.com](mailto:Gage.Putnam@bjservices.com)

Field Office 1716 East Allison Rd., Cheyenne WY, 82007  
Phone: (307) 638-5585

Sales Office 999 18th St. Suite 1200 Denver, CO 80202  
Phone: (281) 408-2361

---

# Cementing Treatment



<b>Start Date</b>	9/24/2018	<b>Well</b>	NORTH PLATTE 11-14-28HNC
<b>End Date</b>	9/25/2018	<b>API#</b>	05-123-47010
<b>Client</b>	BONANZA CREEK ENERGY	<b>County</b>	WELD
<b>Service Sup.</b>	Zach Hyde	<b>State/Province</b>	CO
<b>District</b>	Cheyenne, WY	<b>Formation</b>	NIOBRARA
<b>Type of Job</b>	Long String	<b>Rig</b>	Xtreme 19
<b>Execution ID</b>	EXC-11391-N2K9T102	<b>Project ID</b>	PRJ1011120

## WELL GEOMETRY

Type	ID (in)	OD (in)	Wt. (lb/ft)	MD (ft)	TVD (ft)	Excess(%)
Previous Casing	8.92	9.63	36.00	1,650.00	1,650.00	
Open Hole	8.50			11,640.74	6,358.00	12.50
Casing	4.89	5.50	17.00	11,640.74	6,358.00	

**Shoe Length (ft):** 42.00

## HARDWARE

<b>Top Plug Used?</b>	Yes	<b>Landing Collar Depth (ft)</b>	11,599
<b>Top Plug Provided By</b>	Non BJ	<b>Pipe Movement</b>	None
<b>Top Plug Size</b>	5.500	<b>Job Pumped Through</b>	No Manifold
<b>Centralizers Used</b>	Yes	<b>Top Connection Thread</b>	LTC
<b>Centralizers Quantity</b>	120.00	<b>Top Connection Size</b>	5.5
<b>Centralizers Type</b>	Bow		

## CIRCULATION PRIOR TO JOB

<b>Well Circulated By</b>	Rig	<b>PV Mud Out</b>	12
<b>Circulation Prior to Job</b>	Yes	<b>YP Mud In</b>	14
<b>Circulation Time (min)</b>	120.00	<b>YP Mud Out</b>	14
<b>Circulation Rate (bpm)</b>	8.00	<b>Solids Present at End of Circulation</b>	No
<b>Circulation Volume (bbls)</b>	960.00	<b>10 sec SGS</b>	2.00
<b>Lost Circulation Prior to Cement Job</b>	No	<b>10 min SGS</b>	4.00
<b>Mud Density In (ppg)</b>	9.50	<b>Flare Prior to/during the Cement Job</b>	No
<b>Mud Density Out (ppg)</b>	9.50	<b>Gas Present</b>	No
<b>PV Mud In</b>	12		

## TEMPERATURE

<b>Ambient Temperature (°F)</b>	50.00	<b>Slurry Cement Temperature (°F)</b>	60.00
<b>Mix Water Temperature (°F)</b>	60.00	<b>Flow Line Temperature (°F)</b>	120.00

# Cementing Treatment



## BJ FLUID DETAILS

Fluid Type	Fluid Name	Density (ppg)	Yield (Cu Ft/sk)	H2O Req. (gals/sk)	Planned Top of Fluid (Ft)	Length (Ft)	Vol (sk)	Vol (Cu Ft)	Vol (bbls)
Spacer / Pre Flush / Flush	IntegraGuard EZ Spacer	12.0000			0.00				60.0000
Lead Slurry	BJCem P100.3.01C	12.5000	2.1538	12.23	0.00	5000	605	1,308.0000	232.8000
Tail Slurry	BJCem P50.6.02C	13.5000	1.4772	7.45	5,000.00	6640.74	1163	1,717.0000	305.8000
Displacement 2	Retarded Water	8.3337			13,244.00	0	0	0.0000	20.0000
Displacement Final	Displacement Final (Water)	8.3308			0.00			0.0000	249.7000

Fluid Type	Fluid Name	Component	Concentration	UOM
Spacer / Pre Flush / Flush	IntegraGuard EZ Spacer	SAND, S-8, Silica Flour, 200 Mesh	242.2100	PPB
Spacer / Pre Flush / Flush	IntegraGuard EZ Spacer	EXTENDER, BENTONITE	5.0000	PPB
Spacer / Pre Flush / Flush	IntegraGuard EZ Spacer	GELLANT WATER, GW-86	1.0000	PPB
Spacer / Pre Flush / Flush	IntegraGuard EZ Spacer	SPACER SURFACTANT, SS-247	0.5000	GPB
Spacer / Pre Flush / Flush	IntegraGuard EZ Spacer	SPACER SURFACTANT, SS-267	0.5000	GPB
Lead Slurry	BJCem P100.3.01C	BONDING AGENT, BA-60	0.4000	BWOB
Lead Slurry	BJCem P100.3.01C	GELLANT WATER, GW-86	0.2000	BWOB
Lead Slurry	BJCem P100.3.01C	CEMENT, ASTM TYPE III	100.0000	PCT
Lead Slurry	BJCem P100.3.01C	IntegraSeal CELLO	0.1300	LBS/SK
Lead Slurry	BJCem P100.3.01C	FLUID LOSS, FL-24	0.3000	BWOB
Lead Slurry	BJCem P100.3.01C	FOAM PREVENTER, FP-25	0.3000	BWOB
Lead Slurry	BJCem P100.3.01C	EXTENDER, BENTONITE	4.0000	BWOB
Lead Slurry	BJCem P100.3.01C	RETARDER, SR-20	0.4000	BWOB
Tail Slurry	BJCem P50.6.02C	Flyash (Rockies)	50.0000	PCT
Tail Slurry	BJCem P50.6.02C	CEMENT, CLASS G	50.0000	PCT
Tail Slurry	BJCem P50.6.02C	GELLANT WATER, GW-86	0.1000	BWOB
Tail Slurry	BJCem P50.6.02C	EXTENDER, BENTONITE	2.0000	BWOB
Tail Slurry	BJCem P50.6.02C	RETARDER, SR-20	0.0700	BWOB
Tail Slurry	BJCem P50.6.02C	FOAM PREVENTER, FP-25	0.3000	BWOB
Tail Slurry	BJCem P50.6.02C	FLUID LOSS, FL-66	0.2000	BWOB
Displacement 2	Retarded Water	RETARDER, R-8L	0.5000	GPB
Displacement 2	Retarded Water	BIOCIDE, BIOC11139W	0.0100	GPB
Displacement Final	Displacement Final (Water)	BIOCIDE, BIOC11139W	0.0100	GPB

# Cementing Treatment



## DISPLACEMENT AND END OF JOB SUMMARY

Displaced By	BJ Services	Amount of Cement Returned/Reversed	50.00
Calculated Displacement Volume (bbls)	270.00	Method Used to Verify Returns	Visual
Actual Displacement Volume (bbls)	270.00	Amount of Spacer to Surface	60.00
Did Float Hold?	Yes	Pressure Left on Casing (psi)	0.00
Bump Plug	Yes	Amount Bled Back After Job	3.00
Bump Plug Pressure (psi)	2,000.00	Total Volume Pumped (bbls)	893.00
Were Returns Planned at Surface	Yes	Top Out Cement Spotted	No
Cement returns During Job	Full	Lost Circulation During Cement Job	No

# EVENT LOG



**Customer Name:** BONANZA CREEK ENERGY

**Well Name:** NORTH PLATTE 11-14-28HNC

**Job Type:** Long String

**Quote ID:** QUO-18528-L9Q3Q7

**Plan ID:** ORD-11391-N2K9T1

**District:** Cheyenne, WY

**Execution ID:** EXC-11391-N2K9T102

**BJ Supervisor:** Zachary Hyde

Seq.	Start Dt./Time	Event	Density (ppg)	Pump Rate (bpm)	Pump Vol (bbls)	Pipe Pressure (psi)	Comments
1	09/25/2018 14:20	Callout					Call out requested time 1830
2	09/25/2018 14:30	Arrive on Location					Arrived on location. Had to wait at entrance of location
3	09/25/2018 16:00	Other (See comment)					Waited at the entrance of location until the casing crew landed out
4	09/25/2018 21:00	Spot Units					Spot units
5	09/25/2018 21:10	Rig Up					Crew rigs up iron and hoses needed for job
6	09/25/2018 21:40	Safety Meeting					Crew has a safety meeting with company man and rig crew discussing the job
7	09/25/2018 22:00	Prime Up	8.3300	2.00	3.00	200.00	Filled lines with 3 bbls
8	09/25/2018 22:01	Pressure Test					Pressure tested to 5000 psi
9	09/25/2018 22:07	Pump Spacer	12.0000	4.00	20.00	300.00	Pumped 20 bbls of Spacer at 12 ppg
10	09/25/2018 22:11	Pump Spacer	11.5000	4.00	20.00	300.00	Pumped 20 bbls of Spacer at 11.5 ppg
11	09/25/2018 22:16	Pump Spacer	11.0000	4.00	20.00	300.00	Pumped 20 bbls of Spacer at 11 ppg
12	09/25/2018 22:26	Pump Lead Cement	12.5000	7.00	233.00	300.00	Pumped 233 bbls of Lead at 12.5 ppg(605sks,2.15yld,12.23gal/sk)
13	09/25/2018 23:06	Pump Tail Cement	13.5000	6.00	305.00	250.00	Pumped 305 bbls of Tail at 13.5 ppg (1163sks,1.47yld, 7.45gal/sk)
14	09/25/2018 23:55	End Pumping					Shutdown
15	09/26/2018 00:01	Clean Pumps and Lines					Wash pump and lines to pit
16	09/26/2018 00:07	Drop Top Plug					Drop latch down plug
17	09/26/2018 00:07	Pump Displacement	8.3300	8.00	20.00	100.00	Pumped the first 20 bbls of displacement with retarder
18	09/26/2018 00:10	Pump Displacement	8.3300	8.00	230.00	2,100.00	Pumped 230 bbls of fresh water displacement at 8 bpm with biocide
19	09/26/2018 00:42	Spacer Back to Surface					At 140 bbls away got spacer to surface
20	09/26/2018 00:42	Cement Back to Surface					At 200 away got cement to surface

# EVENT LOG



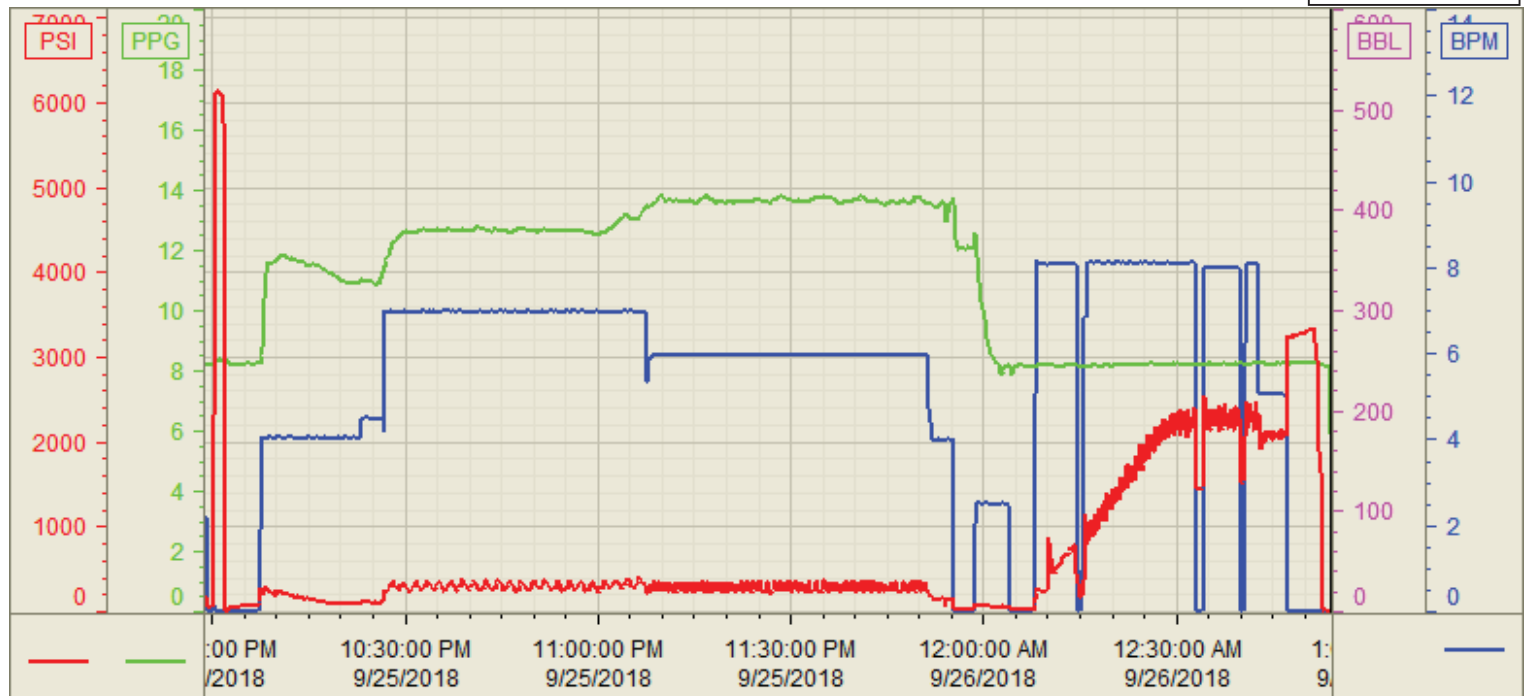
21	09/26/2018 00:42	Other (See comment)	8.3300	5.00	20.00	2,000.00	Slowed rate the last 20 bbls to 5 bpm to land the plug
22	09/26/2018 00:47	Land Plug					Landed plug went 1000 psi over FCP was 2000 psi brought it up to 3200 psi
23	09/26/2018 00:50	Check Floats					Checked floats got 3 bbls back
24	09/26/2018 00:50	Rig Down					Crew rigs down

Customer: Bonanza Creek  
Well Number: 11-14-28HNC  
Lease Info: North Platte



Print Date/Time

9/26/2018 1:31:34 AM



	Name	Y value	X value/time stamp	Tag name Y
1	PS - Press (PSI)	9.9 i.	9/26/2018 12:54:00 AM i.	Cementer\PS_DISCHARGE_PRESS_DIAL
2	DH - Density (PPG)	5.90	9/26/2018 12:54:02 AM	Cementer\DENSITY2_ACTUAL_RATE
3	Combined Rate	0.00	9/26/2018 12:54:02 AM	Cementer\Flow_Combined
4				
5				

Source: Control1 1:31:29 AM