



HighPoint Operating Corporation

Anschutz Equus Farms 5-61-35-4956B

API # 05-123-49227

Intermediate

October 23, 2019

Quote #: QUO-38119-W3P7M5

Execution #: EXC-22043-F5X0N702



HighPoint Operating Corporation

Attention: Mr. Matthew Schwartz | (303) 312-8142 | mschwartz@hpres.com

HighPoint Operating Corporation | 1099 18th St. | Denver, CO. 80202

Dear Mr. Matthew Schwartz,

Thank you for the opportunity to provide cementing services on this well. BJ Services strives to achieve complete customer satisfaction. If you have any questions regarding the services or data provided, please contact BJ Services at any time.

Sincerely,
Jason Creel
Field Engineer I | (307) 365-9038 | jason.creel@bjservices.com

Field Office 1716 East Allison Rd., Cheyenne WY, 82007
Phone: (307) 459-6487

Sales Office 999 18th St. Suite 1200 Denver, CO 80202
Phone: (281) 408-2361

BJ Cementing Treatment Report

SERVICE SUPERVISOR	Zachary Hyde	RIG	Cade 23
DISTRICT	Cheyenne, WY	COUNTY	WELD
SERVICE	Cementing	STATE / PROVINCE	CO

WELL GEOMETRY

TYPE	ID (in)	OD (in)	WEIGHT (lb/ft)	MD (ft)	TVD (ft)	EXCESS (%)	GRADE
Open Hole	8.75	0.00	0.00	6,180.00	5,839.00	20.00	
Previous Casing	8.92	9.63	36.00	993.00	993.00		
Casing	6.37	7.00	23.00	6,166.00	5,839.00		J-55

HARDWARE

Bottom Plug Used?	No	Centralizers Type	Rigid
Top Plug Used?	Yes	Landing Collar Depth (ft)	6,120
Top Plug Provided By	Non BJ	Pipe Movement	None
Top Plug Size	7.000	Job Pumped Through	No Manifold
Centralizers Used	Yes	Top Connection Thread	LTC
Centralizers Quantity	11.00	Top Connection Size	7

CIRCULATION PRIOR TO JOB

Well Circulated By	Rig	PV Mud Out	6
Circulation Prior to Job	Yes	YP Mud In	7
Circulation Time (min)	60.00	YP Mud Out	7
Circulation Rate (bpm)	9.50	Solids Present at End of Circulation	No
Circulation Volume (bbls)	570.00	10 sec SGS	4
Lost Circulation Prior to Cement Job	No	10 min SGS	7
Mud Density In (ppg)	10.20	30 min SGS	8
Mud Density Out (ppg)	10.20	Flare Prior to / during the Cement Job	No
PV Mud In	6	Gas Present	No

TEMPERATURE

Ambient Temperature (°F)	40.00	Slurry Cement Temperature (°F)	60.00
Mix Water Temperature (°F)	60.00	Flow Line Temperature (°F)	120.00

Client: HighPoint Operating Corporation

Well: ANSCHUTZ EQUUS FARMS #5-61-35-4956B

Well API: 05-123-49227

Start Date: 10/23/2019

End Date: 10/23/2019

FLUID DETAILS

FLUID TYPE	FLUID NAME	DENSITY (ppg)	YIELD (Cu Ft/sk)	H ₂ O REQ (gals/sk)	PLN TOP FLD (ft)	LENGTH (ft)	VOL (sk)	VOL (Cu Ft)	VOL (bbls)
Spacer / Pre Flush / Flush	Fresh Water	8.3300			2,006.00				40.0000
Lead Slurry	BJCem I100.3.01C	12.5000	2.0726	11.83	3,500.00	2,159.00	190	394.0000	70.1000
Tail Slurry	BJCem I100.6.01C	15.8000	1.1560	4.98	5,659.00	500.00	90	105.0000	18.5000
Displacement Final	Water	8.3300			0.00			0.0000	240.7000

FLUID TYPE	FLUID NAME	COMPONENT	CONCENTRATION	UOM
Lead Slurry	BJCem I100.3.01C	FOAM PREVENTER, FP-25	0.3000	BWOB
Lead Slurry	BJCem I100.3.01C	FLUID LOSS, FL-24	0.3000	BWOB
Lead Slurry	BJCem I100.3.01C	BONDING AGENT, BA-60	0.3000	BWOB
Lead Slurry	BJCem I100.3.01C	RETARDER, SR-20	0.3000	BWOB
Lead Slurry	BJCem I100.3.01C	CEMENT, ASTM TYPE III	100.0000	PCT
Tail Slurry	BJCem I100.6.01C	CEMENT, CLASS G	100.0000	PCT
Tail Slurry	BJCem I100.6.01C	FOAM PREVENTER, FP-25	0.3000	BWOB
Tail Slurry	BJCem I100.6.01C	RETARDER, R-6	0.2000	BWOB
Tail Slurry	BJCem I100.6.01C	BONDING AGENT, BA-60	0.2000	BWOB
Tail Slurry	BJCem I100.6.01C	FLUID LOSS, FL-24	0.2000	BWOB
Tail Slurry	BJCem I100.6.01C	DISPERSANT, CD-31	0.2000	BWOB

DISPLACEMENT AND END OF JOB SUMMARY

Displaced By	BJ	Amt of Cement Returned / Reversed	0.00
Calculated Displacement Vol (bbls)	241.00	Method Used to Verify Returns	Visual
Actual Displacement Vol (bbls)	241.00	Amt of Spacer to Surface	0.00
Did Float Hold?	Yes	Pressure Left on Casing (psi)	0.00
Bump Plug	Yes	Amt Bled Back After Job	1.00
Bump Plug Pressure (psi)	800.00	Total Volume Pumped (bbls)	560.00
Were Returns Planned at Surface	No	Top Out Cement Spotted	No
Cement Returns During Job	None	Lost Circulation During Cement Job	No

BJ Cementing Event Log

Intermediate - Cheyenne, WY

SEQ	START DATE / TIME	EVENT	DENSITY (ppg)	PUMP RATE (bpm)	PUMP VOL (bbls)	PIPE PRESSURE (psi)	COMMENTS
1	10/22/2019 19:56	Callout					Crew gets called out requested time 2400
2	10/22/2019 20:00	Depart for Location					Crew departs for location
3	10/22/2019 20:00	Arrive on Location					Crew arrives on location
4	10/22/2019 23:45	Rig Up					Crew rigs up iron and hoses
5	10/22/2019 23:45	Rig					Crew waits for rig to finish running casing
6	10/23/2019 02:15	STEACS Briefing					Crew has a briefing with company man and rig crew
7	10/23/2019 02:37	Prime Up	8.3300	3.00	3.00	100.00	Filled lines 3 bbls
8	10/23/2019 02:40	Pressure Test					Pressure tested to 3500 psi
9	10/23/2019 02:41	Pump Spacer	8.3300	6.00	40.00	700.00	Pumped 40 bbls of water spacer
10	10/23/2019 02:48	Pump Lead Cement	12.5000	6.00	70.00	600.00	Pumped 70 bbls of Lead at 12.5ppg(190sk,2.07yld,11.83gal/sk)
11	10/23/2019 02:58	Pump Tail Cement	15.8000	4.00	18.50	200.00	Pumped 18.5 bbls of Tail at 15.8ppg(90sk,1.15yld,4.98gal/sk)
12	10/23/2019 03:03	End Pumping					Shutdown
13	10/23/2019 03:08	Drop Top Plug					Dropped top plug
14	10/23/2019 03:08	Pump Displacement	8.3300	7.00	20.00	100.00	Washed up the first 20 bbls on top of the plug
15	10/23/2019 03:10	Pump Displacement	8.3300	7.00	201.00	800.00	Pumped 201 bbls of Displacement at
16	10/23/2019 03:39	Pump Displacement	8.3300	3.00	20.00	500.00	Slowed rate last 20 bbls to
17	10/23/2019 04:02	Land Plug					Landed plug went 500 psi over FCP
18	10/23/2019 04:02	Other (See comment)					Did a casing test to 2000 psi it didn't hold
19	10/23/2019 04:10	Check Floats					Checked floats got 1 bbl back
20	10/23/2019 04:10	Rig Down					Crew rigs down iron and hoses

Client: HighPoint Operating Corporation

Well Name / API: ANSCHUTZ EQUUS FARMS
#5-61-35-4956B / 05-123-49227

Well 6159
MD:



Quote #: QUO-38119-W3P7M5

Plan #: ORD-22043-F5X0N7

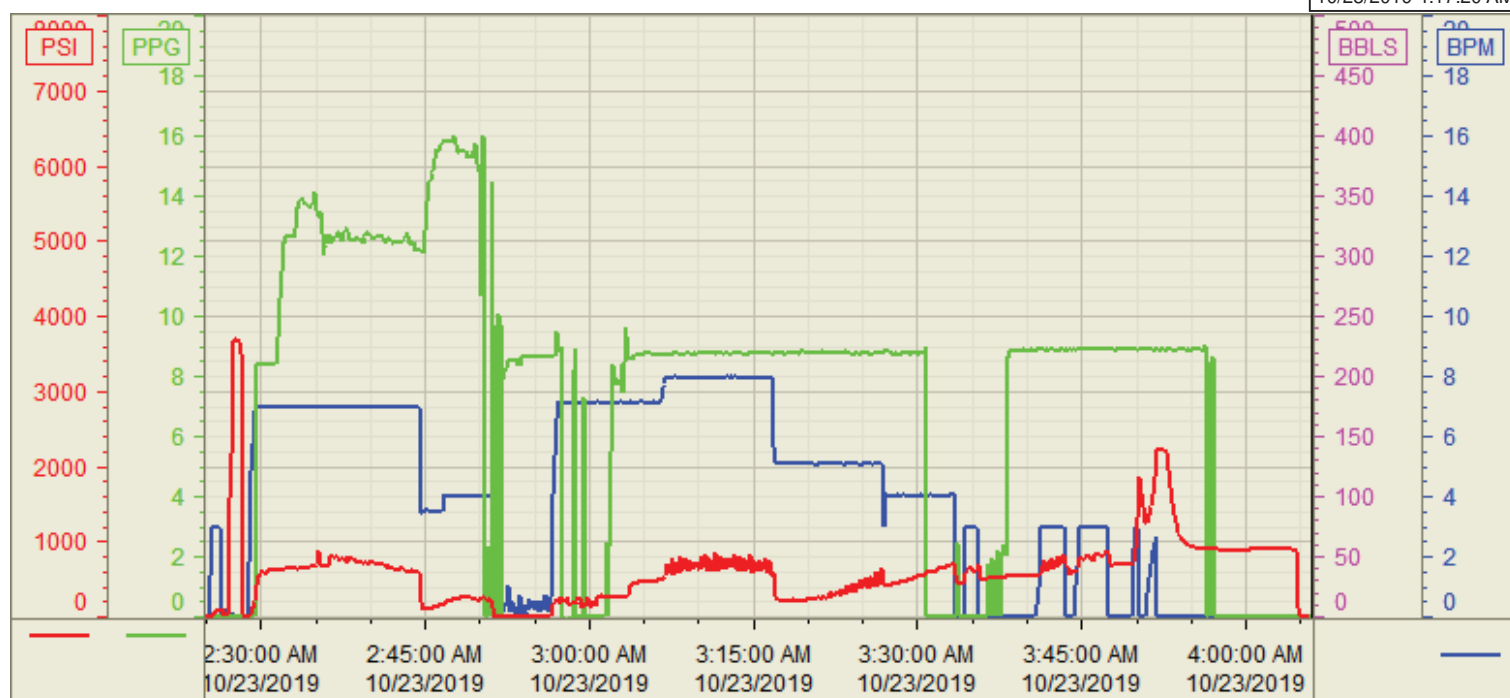
Execution #: EXC-22043-F5X0N702

Customer: HighPoint Operating
Well Number: 5-61-35-4956B
Lease Info: Anschutz Equus Farms



Print Date/Time

10/23/2019 4:17:20 AM



	Name	Y value	X value/time stamp	Tag name Y
1	DS - Press (PSI)		10/23/2019 4:06:00 AM i.	Cementer\DS_DISCHARGE_PRESS_DIAL
2	Den - Density (PPG)	0.01	10/23/2019 4:06:02 AM	Cementer\DENSITY_ACTUAL_RATE
3	Combined Rate (BPM)	0.00	10/23/2019 4:06:02 AM	Cementer\Flow_Combined
4				
5				

Source: Control1 4:17:14 AM