



# HighPoint Operating Corporation

Anschutz Equus Farms 5-61-35-4956B

API # 05-123-49227

## Production

October 27, 2019

Quote #: QUO-38175-G4L6C4

Execution #: EXC-22123-Q5Z9F502



# HighPoint Operating Corporation

Attention: Mr. Matthew Schwartz | (303) 312-8142 | [mschwartz@hpres.com](mailto:mschwartz@hpres.com)

HighPoint Operating Corporation | 1099 18th St. | Denver, CO. 80202

---

Dear Mr. Matthew Schwartz,

Thank you for the opportunity to provide cementing services on this well. BJ Services strives to achieve complete customer satisfaction. If you have any questions regarding the services or data provided, please contact BJ Services at any time.

Sincerely,  
Jason Creel  
Field Engineer I | (307) 365-9038 | [jason.creel@bjservices.com](mailto:jason.creel@bjservices.com)

Field Office 1716 East Allison Rd., Cheyenne WY, 82007  
Phone: (307) 459-6487

Sales Office 999 18th St. Suite 1200 Denver, CO 80202  
Phone: (281) 408-2361

---

# BJ Cementing Treatment Report

SERVICE SUPERVISOR	Michael Lopez	COUNTY	WELD
DISTRICT	Cheyenne, WY	STATE / PROVINCE	CO
SERVICE	Cementing		

## WELL GEOMETRY

TYPE	ID (in)	OD (in)	WEIGHT (lb/ft)	MD (ft)	TVD (ft)	EXCESS (%)	GRADE
Casing	4.00	4.50	11.60	15,899.00	5,377.00		P-110
Previous Casing	6.37	7.00	23.00	6,166.00	6,166.00		J-55
Open Hole	6.13	0.00	0.00	15,902.00	537,700.00	10.00	

## HARDWARE

Bottom Plug Used?	No	Centralizers Type	Bow
Top Plug Used?	Yes	Landing Collar Depth (ft)	15,881
Top Plug Provided By	Non BJ	Tool Type	Float Collar
Top Plug Size	4.500	Tool Depth (ft)	15,881.00
Centralizers Used	Yes	Job Pumped Through	Manifold
Centralizers Quantity	123.00	Top Connection Size	4.5

## CIRCULATION PRIOR TO JOB

Well Circulated By	BJ	PV Mud In	27
Circulation Prior to Job	Yes	PV Mud Out	32
Circulation Time (min)	60.00	YP Mud In	3
Circulation Rate (bpm)	8.00	Solids Present at End of Circulation	No
Circulation Volume (bbls)	492.00	10 sec SGS	2
Lost Circulation Prior to Cement Job	No	10 min SGS	4
Mud Density In (ppg)	8.50	Flare Prior to / during the Cement Job	No
Mud Density Out (ppg)	9.20	Gas Present	No

## TEMPERATURE

Ambient Temperature (°F)	37.00	Slurry Cement Temperature (°F)	68.00
Mix Water Temperature (°F)	70.00	Flow Line Temperature (°F)	68.00

Client: HighPoint Operating Corporation

Well: ANSCHUTZ EQUUS FARMS #5-61-35-4956B

Well API: 05-123-49227

Start Date: 10/26/2019

End Date: 10/26/2019

Field Ticket #: FT-22123-Q5Z9F50201-1746335392



## FLUID DETAILS

FLUID TYPE	FLUID NAME	DENSITY (ppg)	YIELD (Cu Ft/sk)	H <sub>2</sub> O REQ (gals/sk)	PLN TOP FLD (ft)	LENGTH (ft)	VOL (sk)	VOL (Cu Ft)	VOL (bbls)
Spacer / Pre Flush / Flush	Fresh Water	8.3300			1,470.00				40.0000
Tail Slurry	BJCem P50.6.01C	13.5000	1.5930	7.95	3,500.00	12,397.00	820	1307.0000	232.6000
Displacement 1	Retarded Water	8.3300			14,605.00			0.0000	20.0000
Displacement Final	Water + Chems	8.3300			0.00			0.0000	227.0000

FLUID TYPE	FLUID NAME	COMPONENT	CONCENTRATION	UOM
Tail Slurry	BJCem P50.6.01C	RETARDER, SR-20	0.2000	BWOB
Tail Slurry	BJCem P50.6.01C	IntegraCare EC-2	3.0000	BWOB
Tail Slurry	BJCem P50.6.01C	CEMENT, CLASS G	50.0000	PCT
Tail Slurry	BJCem P50.6.01C	EXTENDER, BENTONITE	4.0000	BWOB
Tail Slurry	BJCem P50.6.01C	FOAM PREVENTER, FP-25	0.3000	BWOB
Tail Slurry	BJCem P50.6.01C	BONDING AGENT, BA-90	3.0000	LBS/SK
Tail Slurry	BJCem P50.6.01C	FLUID LOSS, FL-24	0.4000	BWOB
Tail Slurry	BJCem P50.6.01C	IntegraGuard GW-86	0.1000	BWOB
Tail Slurry	BJCem P50.6.01C	Flyash (Rockies)	50.0000	PCT
Displacement Final	Water + Chems	OXYGEN SCAVENGER, OS-30	0.1680	GPB
Displacement Final	Water + Chems	CORROSION INHIBITORS, CI-27	0.2100	GPB
Displacement Final	Water + Chems	BIOCIDE, BIOC11139W	0.0210	GPB

## DISPLACEMENT AND END OF JOB SUMMARY

Displaced By	BJ	Amt of Cement Returned / Reversed	0.00
Calculated Displacement Vol (bbls)	247.00	Method Used to Verify Returns	Visual
Actual Displacement Vol (bbls)	247.00	Amt of Spacer to Surface	0.00
Did Float Hold?	Yes	Pressure Left on Casing (psi)	0.00
Bump Plug	No	Amt Bled Back After Job	1.00
Bump Plug Pressure (psi)	2200.00	Total Volume Pumped (bbls)	526.00
Were Returns Planned at Surface	No	Top Out Cement Spotted	No
Cement Returns During Job	Full	Lost Circulation During Cement Job	No

Client: HighPoint Operating Corporation

Well: ANSCHUTZ EQUUS FARMS #5-61-35-4956B

Well API: 05-123-49227

Start Date: 10/26/2019

End Date: 10/26/2019

Field Ticket #: FT-22123-Q5Z9F50201-1746335392



# BJ Cementing Event Log

Long String - Cheyenne, WY - Michael Lopez

SEQ	START DATE / TIME	EVENT	DENSITY (ppg)	PUMP RATE (bpm)	PUMP VOL (bbls)	PIPE PRESSURE (psi)	COMMENTS
1	10/26/2019 10:00	Callout					Get To Yard And Pre-Trip Equipment
2	10/26/2019 11:00	STEACS Briefing					Journey Management To Location
3	10/26/2019 18:30	Depart for Location					Depart For Location
4	10/26/2019 20:30	Arrive on Location					Arrive On Location
5	10/26/2019 20:30	STEACS Briefing					Safety Brief On Rigging Up
6	10/26/2019 20:40	Rig Up					Rig Up To Standards
7	10/26/2019 22:30	STEACS Briefing					Safety Meeting With All Personnel On Location
8	10/26/2019 22:47	Prime Up	8.3000	3.00	3.00	400.00	Three bbls Ahead
9	10/26/2019 22:49	Pressure Test	8.3000				Pressure Test To 5234 psi
10	10/26/2019 22:53	Pump Spacer	8.3000	5.00	40.00	1000.00	Pump Fresh Water
11	10/26/2019 23:01	Pump Tail Cement	13.5000	6.00	232.60	1300.00	Tail - 820 sks; Yield = 1.59 cuft/sk; Mix Water = 7.95 gal/sk
12	10/26/2019 23:45	Wash Pumps and Lines	8.3000				Wash Pump & Lines
13	10/26/2019 23:51	Drop Top Plug	8.3000				Drop Top Plug
14	10/26/2019 23:51	Pump Displacement	8.3000	8.00	20.00	2640.00	First 20 bbls With Retarder
15	10/26/2019 23:52	Pump Displacement	8.3000	7.00	80.00	3345.00	Fresh Water With Biocide = 5 gals, Corrosion Inhibitor = 50 gals And Oxygen Scavenger = 40 gals
16	10/27/2019 00:10	Pump Displacement	8.3000				Fresh Water With Biocide = 5 gals, Corrosion Inhibitor = 50 gals And Oxygen Scavenger = 40 gals
17	10/27/2019 00:20	Pump Displacement	8.3000				Fresh Water With Biocide = 5 gals, Corrosion Inhibitor = 50 gals And Oxygen Scavenger = 40 gals
18	10/27/2019 00:25	Pump Displacement	8.3000				Fresh Water With Biocide = 5 gals, Corrosion Inhibitor = 50 gals And Oxygen Scavenger = 40 gals
19	10/27/2019 00:30	Pump Displacement	8.3000				Fresh Water With Biocide = 5 gals, Corrosion Inhibitor = 50 gals And Oxygen Scavenger = 40 gals
20	10/27/2019 00:35	Pump Displacement	8.3000				Fresh Water With Biocide = 5 gals, Corrosion Inhibitor = 50 gals And Oxygen Scavenger = 40 gals
21	10/27/2019 00:38	Land Plug		3.00	247.00		Circulating Pressure - 1700 psi; Bump At - 2200 psi

Client: HighPoint Operating Corporation

Well Name / API: ANSCHUTZ EQUUS FARMS #5-61-35-4956B / 05-123-49227

Well MD: 15902



Quote #: QUO-38175-G4L6C4

Plan #: ORD-22123-Q5Z9F5

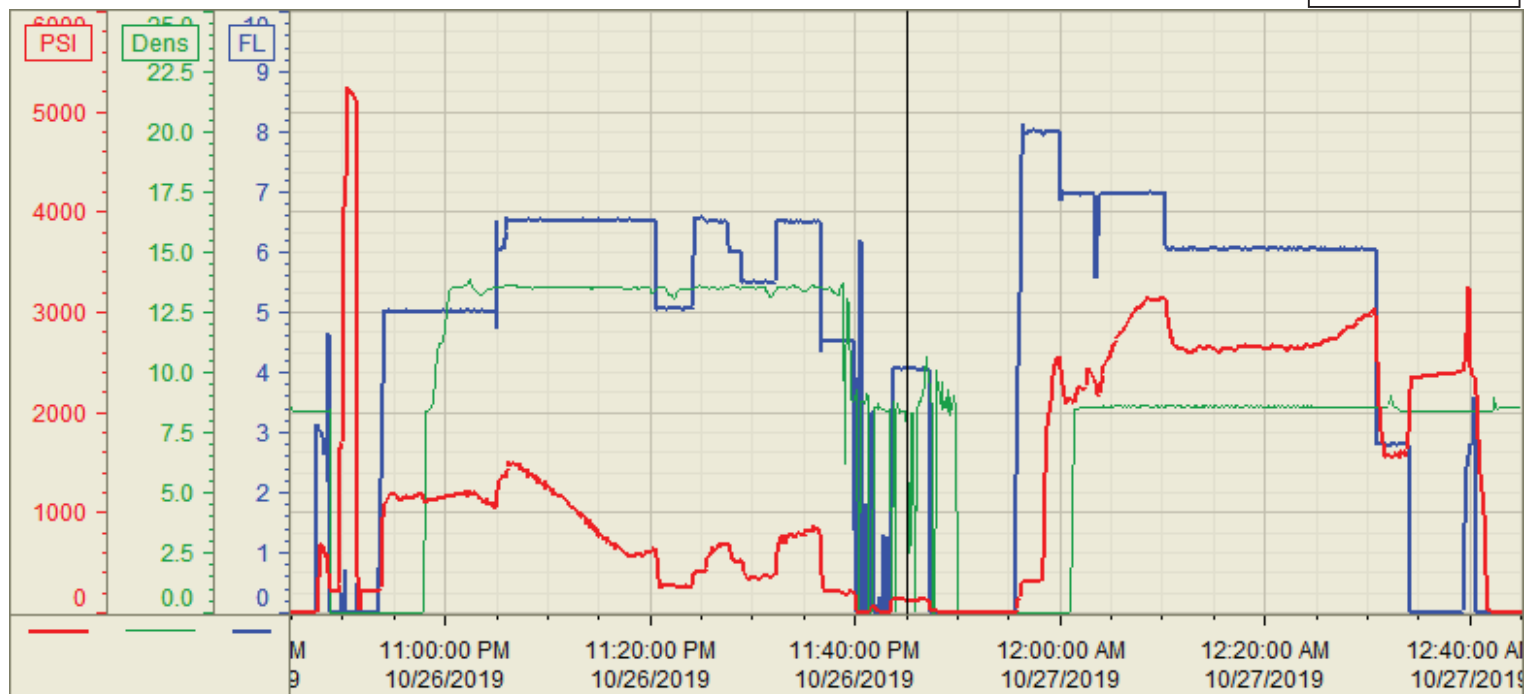
Execution #: EXC-22123-Q5Z9F502

22	10/27/2019 00:40	Other (See comment)				2200.00	Hold 5 mins
23	10/27/2019 00:45	Other (See comment)		2.00	2.50	3518.00	Wetshoe - 3518 psi
24	10/27/2019 00:46	Other (See comment)		4.00		2700.00	Pump 2.5 bbls At 4 bpm
25	10/27/2019 00:47	Check Floats					Floats Held; 1 bbl Back
26	10/27/2019 01:00	STEACS Briefing					Safety Brief On Rig Down
27	10/27/2019 01:30	Rig Down					Rig Down
28	10/27/2019 02:30	STEACS Briefing					Journey Management To Yard
29	10/27/2019 03:00	Leave Location					Leave Location

Customer: HighPoint Operating  
Well Number: 5-61-35-4956B  
Lease Info: Anschutz Equus Farms



Print Date/Time  
10/27/2019 1:26:02 AM



	Name	Y value	X value/time stamp	Tag name Y
1	DS - Press (PSI)	125.0 i.	10/26/2019 11:45:03 PM i.	Cementer\DS_DISCHARGE_PRESS_DIAL
2	Recirc - Density (PPG)	7.61	10/26/2019 11:45:01 PM	Cementer\DENSITY_ACTUAL_RATE
3	Combined pump rate	4.06	10/26/2019 11:45:01 PM	Cementer\Flow_Combined
4				
5				

Source: Control1 1:26:02 AM