



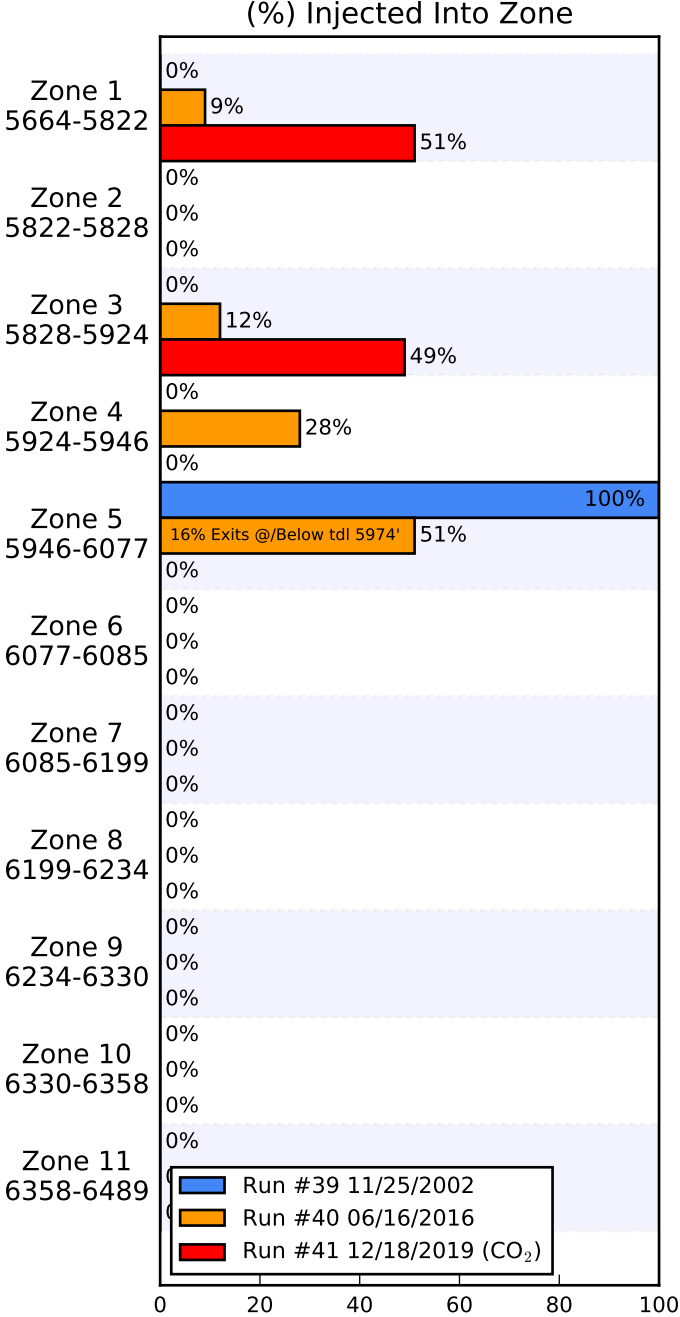
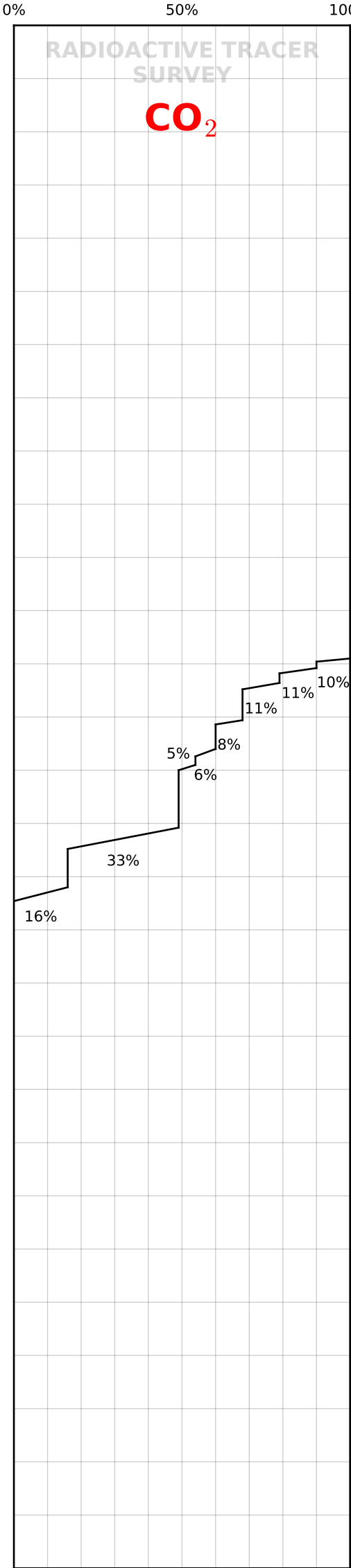
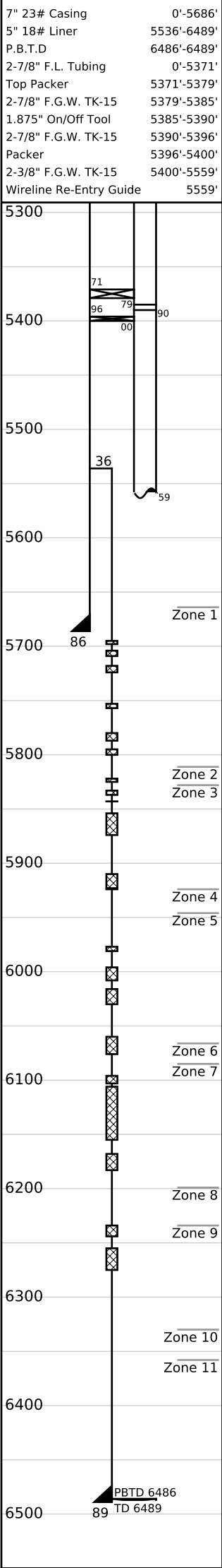
Survey Data

Remarks

Well: Fee 52
(3621)
Field: Rangley, Co.

Run No.41		12/18/2019 Ran 1.75" G/R to 5965'. R/A Tracer checks top perf, packers, and liner top O.K.
Survey Type: T-S-T	Surface Temp: 81.4 °F	
Date: 12/18/2019	BHT: 123.8 °F	
Metered Rate: 2170 mcf/d	TBG Pressure: 1900 PSI	
Measured Rate: 857 B/D	CSG Pressure: 0 PSI	
Desired Rate: N/A	Pick Up: 5954' TDL	
Service Co: PLS	Inj. Fluid: CO ₂	
Recorded By: Matt Stratton		

Mechanical Information



	Run #39 11/25/2002	Run #40 06/16/2016	Run #41 12/18/2019
Surface	88.5	102.7	81.4
5664-5822	--	--	--
5822-5828	--	--	--
5828-5924	--	--	--
5924-5946	--	--	--
5946-6077	--	--	--
TDL (5954)	114.2	108.1	123.8
6077-6085	--	--	--
6085-6199	--	--	--
6199-6234	--	--	--
6234-6330	--	--	--
6330-6358	--	--	--
6358-6489	--	--	--
Rate (B/D)	None	1812	857
Press (PSI)	1750	1525	1900