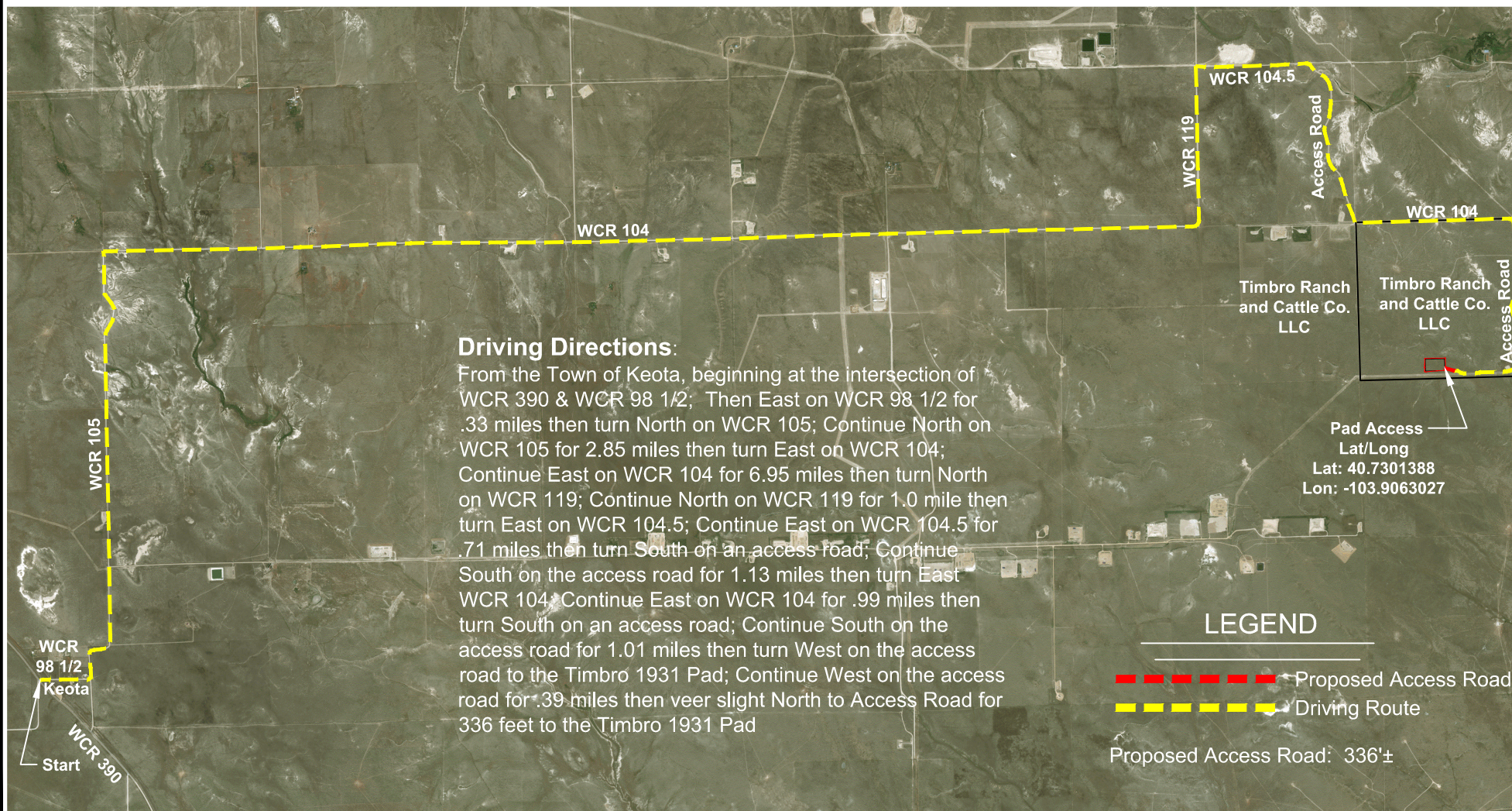
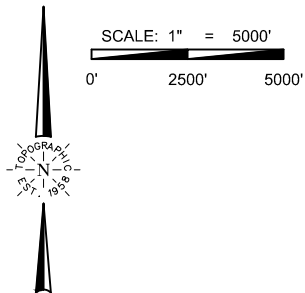


ACCESS ROAD MAP

SE 1/4 SW 1/4 SECTION 19
T9N R58W 6TH PM
WELD COUNTY, COLORADO



Driving Directions:

From the Town of Keota, beginning at the intersection of WCR 390 & WCR 98 1/2; Then East on WCR 98 1/2 for .33 miles then turn North on WCR 105; Continue North on WCR 105 for 2.85 miles then turn East on WCR 104; Continue East on WCR 104 for 6.95 miles then turn North on WCR 119; Continue North on WCR 119 for 1.0 mile then turn East on WCR 104.5; Continue East on WCR 104.5 for .71 miles then turn South on an access road; Continue South on the access road for 1.13 miles then turn East WCR 104; Continue East on WCR 104 for .99 miles then turn South on an access road; Continue South on the access road for 1.01 miles then turn West on the access road to the Timbro 1931 Pad; Continue West on the access road for .39 miles then veer slight North to Access Road for 336 feet to the Timbro 1931 Pad

Timbro Ranch
and Cattle Co.
LLC

Timbro Ranch
and Cattle Co.
LLC

Pad Access
Lat/Long
Lat: 40.7301388
Lon: -103.9063027

LEGEND

- Proposed Access Road
 - Driving Route
- Proposed Access Road: 336'±

VERDAD RESOURCES
TIMBRO FED 1931
JOB NO. 115835

MAPP December 4, 2019
SHEET : 1 OF 1
FILE: F2A_TIMBRO_1931_ACCESS_REV3

REVISION:
INT DATE

TOPOGRAPHIC
LOYALTY INNOVATION LEGACY
520 Stacy Court Ste B, Lafayette, CO 80026
303.666.0379 www.topographic.com