



Verdad Resources LLC

Rev 0

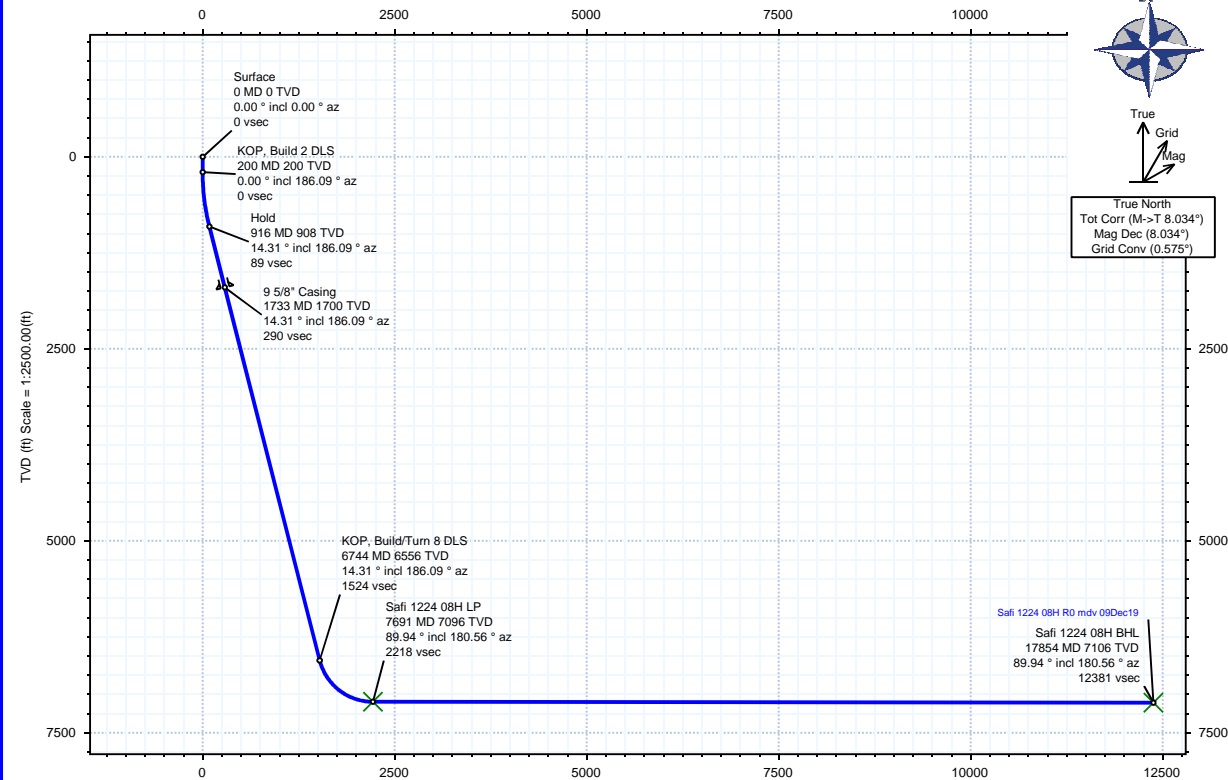
Schlumberger

Borehole:	Well:	Field:	Structure:
Original Hole	Safi 1224 08H	CO, Weld County (NAD 83 NZ) - 2019	Verdad Resources 12-01N-65W (Safi 1224 Pad)

Gravity & Magnetic Parameters	Surface Location	NAD83 Colorado State Plane, Northern Zone, US Feet	Miscellaneous
Model: HDGM 2019 Dip: 66.379° Date: 09-Dec-2019	Lat: N 40 3 53.23 Northing: 1267695.05ftUS Grid Conv: 0.5747°	Lon: W 104 36 38.02 Easting: 3248938.47ftUS Scale Fact: 0.99996209	Slot: Safi 1224 08H TVD Ref: KB 21ft(4991ft above MSL)
MagDec: 8.034° FS: 51937.947nT Gravity FS: 999mgn (9.80665 Based)			Plan: Safi 1224 08H R0 mdv 09Dec19

Target Description	Latitude	Longitude	North	East	TVD	VSec	N(+)S(-)	E(+)W(-)
Safi 1224 Pad Sec 12-13 - CL	N 40 3 53.23	W 104 36 38.64	1267694.75	3248890.50	4991.00	0.91	0.18	-47.97
Safi 1224 Pad Sec 13-24 - CL	N 40 3 53.23	W 104 36 38.64	1267694.75	3248890.50	4991.00	0.91	0.18	-47.97
Safi 1224 Pad Sec 12-13-24	N 40 3 53.23	W 104 36 38.64	1267694.75	3248890.50	4991.00	0.91	0.18	-47.97
Safi 1224 Pad Sec 13-24 - Setback	N 40 3 53.23	W 104 36 38.64	1267694.75	3248890.50	4991.00	0.91	0.18	-47.97
Safi 1224 08H LP	N 40 3 31.34	W 104 36 40.36	1265479.05	3248778.50	7096.00	2217.94	-2214.38	-182.20
Safi 1224 08H BHL	N 40 1 50.91	W 104 36 41.64	1255315.93	3248781.48	7106.00	12380.61	-12377.41	-281.16

Critical Point	MD	INCL	AZIM	TVD	VSEC	N(+)S(-)	E(+)W(-)	DLS
Surface	0.00	0.00	0.00	0.00	0.00	0.00	0.00	
KOP, Build 2 DLS	200.00	0.00	186.09	200.00	0.00	0.00	0.00	0.00
Hold	915.53	14.31	186.09	908.12	88.59	-88.39	-9.43	2.00
9 5/8" Casing Point	1732.78	14.31	186.09	1700.00	289.89	-289.26	-30.84	0.00
KOP, Build/Turn 8 DLS	6744.46	14.31	186.09	6556.17	1524.35	-1521.06	-162.20	0.00
Safi 1224 08H LP	7690.72	89.94	180.56	7096.00	2217.94	-2214.38	-182.20	8.00
Safi 1224 08H BHL	17854.25	89.94	180.56	7106.00	12380.61	-12377.41	-281.16	0.00



Vertical Section (ft) Azim = 181.30° Scale = 1:2500.00(ft) Origin = 0N/-S, 0E/-W

