



Verdad Resources LLC

Rev 0

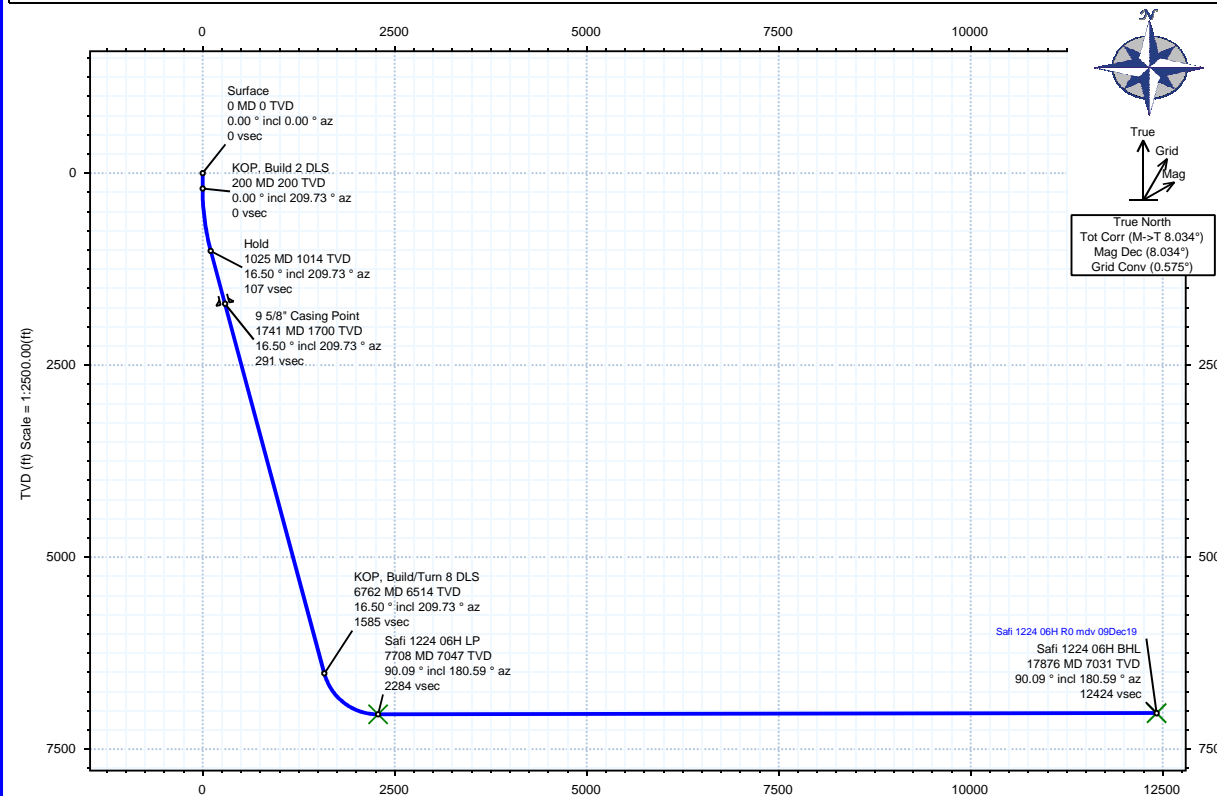


Borehole:	Well:	Field:	Structure:
Original Hole	Safi 1224 06H	CO, Weld County (NAD 83 NZ) - 2019	Verdad Resources 12-01N-65W (Safi 1224 Pad)

Gravity & Magnetic Parameters	Surface Location	NAD83 Colorado State Plane, Northern Zone, US Feet	Miscellaneous
Model: HDGM 2019 Dip: 66.379° Date: 09-Dec-2019	Lat: N 40 3 53.23 Northing: 1267694.93ftUS Grid Conv: 0.5747°		Slot: Safi 1224 06H TVD Ref: KB 21ft(4991ft above MSL)
MagDec: 8.034° FS: 51937.954nT Gravity FS: 999mgn (9.80665 Based)	Lon: W 104 36 38.23 Easting: 3248922.49ftUS Scale Fact: 0.99996209		Plan: Safi 1224 06H R0 mdv 09Dec19

Target Description	Latitude	Longitude	North	East	TVD	VSec	N(+)/S(-)	E(+)/W(-)
Safi 1224 Pad Sec 12-13 - CL	N 40 3 53.23	W 104 36 38.64	1267694.75	3248890.50	4991.00	2.57	0.15	-31.99
Safi 1224 Pad Sec 13-24 - CL	N 40 3 53.23	W 104 36 38.64	1267694.75	3248890.50	4991.00	2.57	0.15	-31.99
Safi 1224 Pad Sec 12-13-24	N 40 3 53.23	W 104 36 38.64	1267694.75	3248890.50	4991.00	2.57	0.15	-31.99
Safi 1224 Pad Sec 13-24 - Setback	N 40 3 53.23	W 104 36 38.64	1267694.75	3248890.50	4991.00	2.57	0.15	-31.99
Safi 1224 06H BHL	N 40 1 50.90	W 104 36 51.79	1255306.73	3247992.08	7031.00	12423.59	-12378.74	-1054.65
Safi 1224 06H LP	N 40 3 31.38	W 104 36 50.45	1265474.37	3247994.05	7047.00	2283.95	-2211.23	-950.70

Critical Point	MD	INCL	AZIM	TVD	VSEC	N(+)/S(-)	E(+)/W(-)	DLS
Surface	0.00	0.00	0.00	0.00	0.00	0.00	0.00	0.00
KOP, Build 2 DLS	200.00	0.00	209.73	200.00	0.00	0.00	0.00	0.00
Hold	1024.96	16.50	209.73	1013.61	107.03	-102.43	-58.51	2.00
9 5/8" Casing Point	1740.83	16.50	209.73	1700.00	291.49	-278.97	-159.35	0.00
KOP, Build/Turn 8 DLS	6761.55	16.50	209.73	6513.98	1585.21	-1517.12	-866.58	0.00
Safi 1224 06H LP	7708.15	90.09	180.59	7047.00	2283.95	-2211.23	-950.70	8.00
Safi 1224 06H BHL	17876.21	90.09	180.59	7031.00	12423.59	-12378.74	-1054.65	0.00



Vertical Section (ft) Azim = 184.87° Scale = 1:2500.00(ft) Origin = 0N/-S, 0E/-W

