



6899 Pecos Street, Unit C
Denver, Colorado 80221

CLIENT: Kerr-McGee Oil & Gas Onshore LP

LOGGED BY: Zach Mahaffey

PROJECT MANAGER: Robert Cornez

DRILLING CONTRACTOR: Tasman Geosciences

DRILLING EQUIPMENT: Hand Auger

DRILL BIT SIZE (INCHES): 3"

DATE STARTED - COMPLETED: 11/21/2016

TOTAL WELL DEPTH (FT. BGS): 15

DEPTH TO WATER (FT. BGS): 9.75 (11/23/16) ▼

Tuttle L 63N66W/17SE NW
Production Facility

BORING / WELL ID: BH01 (Destroyed)

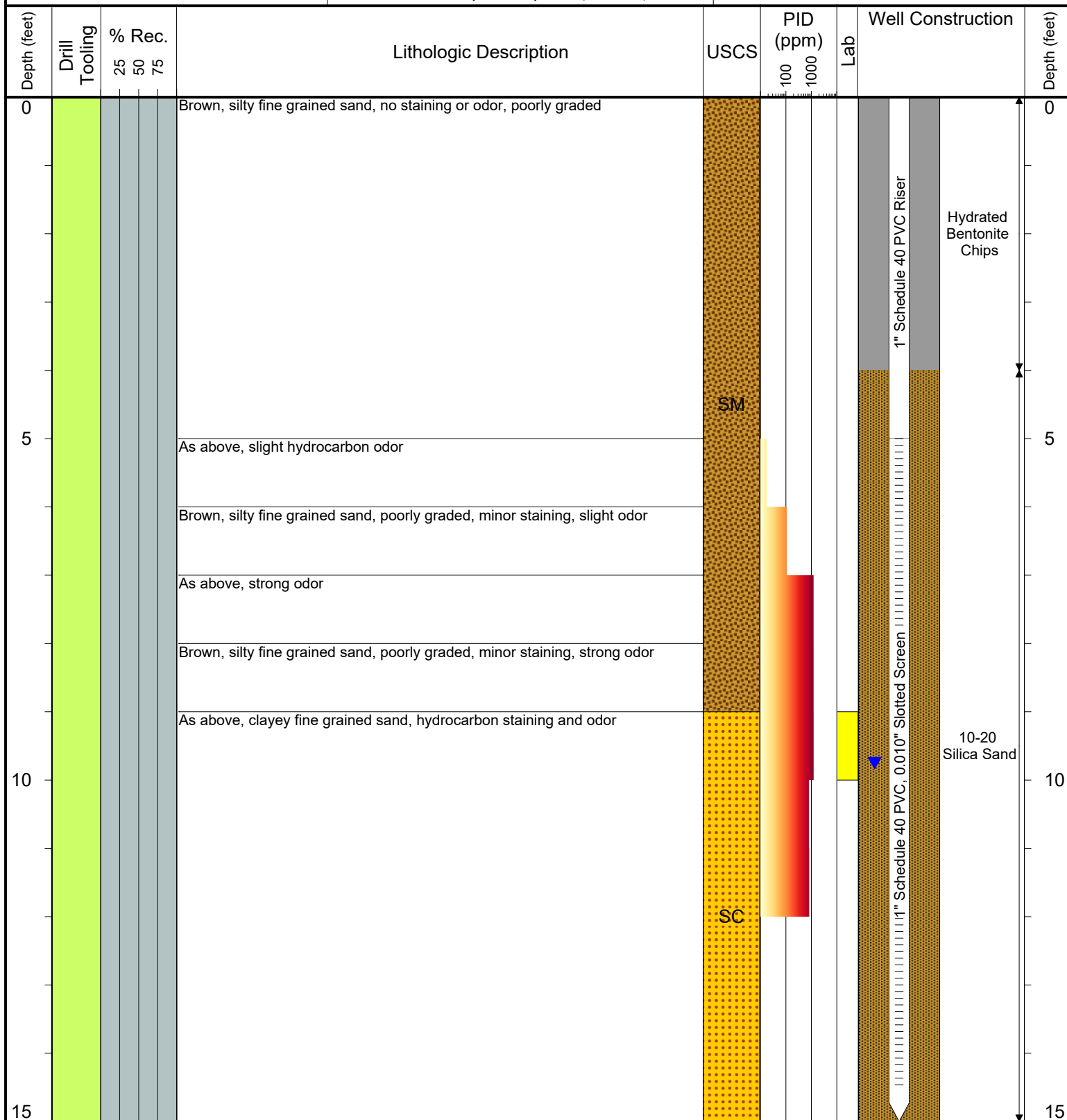
COMPLETION: Flush Mount

LATITUDE (WGS 1984): 40.231936087

LONGITUDE (WGS 1984): -104.80143985

CASING ELEVATION (FT. AMSL): 4877.55

GROUND ELEVATION (FT. AMSL): 4877.7



Drilling / Sample Method:

- Hand Auger
- Macro-Core

Laboratory Sample Types:

- Geotechnical Lab
- Analytical Chemistry Lab
- Geotechnical & Analytical Chemistry Lab



6899 Pecos Street, Unit C
Denver, Colorado 80221

CLIENT: Kerr-McGee Oil & Gas Onshore LP

LOGGED BY: Matt Petersen

PROJECT MANAGER: Robert Cornez

DRILLING CONTRACTOR: Tasman Geosciences

DRILLING EQUIPMENT: AMS - Powerprobe 9300 SK

DRILL BIT SIZE (INCHES): 2 3/8"

DATE STARTED - COMPLETED: 8/3/2017

TOTAL WELL DEPTH (FT. BGS): 14.5

DEPTH TO WATER (FT. BGS): 9.94 (11/9/17) ▼

Tuttle L 63N66W/17SEW
Production Facility

BORING / WELL ID: BH01R (Abandoned)

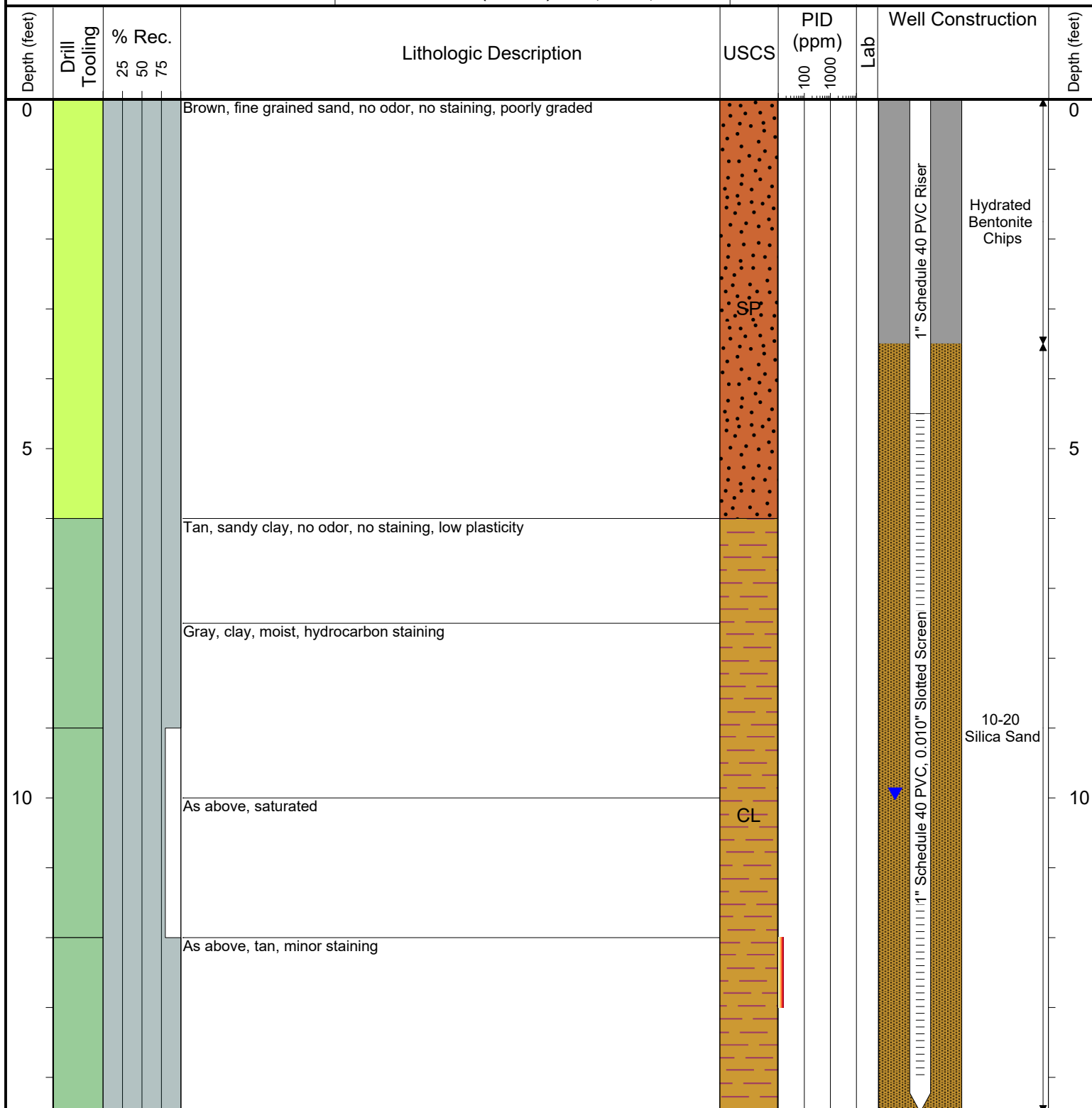
COMPLETION: Flush Mount

LATITUDE (WGS 1984): 40.231927851

LONGITUDE (WGS 1984): -104.8014356

CASING ELEVATION (FT. AMSL): 4878.56

GROUND ELEVATION (FT. AMSL): 4878.56



Drilling / Sample Method:

- Hand Auger
- Macro-Core

Laboratory Sample Types:

- Geotechnical Lab
- Analytical Chemistry Lab
- Geotechnical & Analytical Chemistry Lab



6899 Pecos Street, Unit C
Denver, Colorado 80221

CLIENT: Kerr-McGee Oil & Gas Onshore LP

LOGGED BY: Brandon LeVasseur

PROJECT MANAGER: Robert Cornez

DRILLING CONTRACTOR: Tasman Geosciences, Inc.

DRILLING EQUIPMENT: AMS PowerProbe

DRILL BIT SIZE (INCHES): 2-3/8"

DATE STARTED - COMPLETED: 6/11/2019

TOTAL WELL DEPTH (FT. BGS): 16

DEPTH TO WATER (FT. BGS): 11.19 (6/18/19) ▼

Tuttle L 63N66W/17SEW
Production Facility

BORING / WELL ID: BH01R2

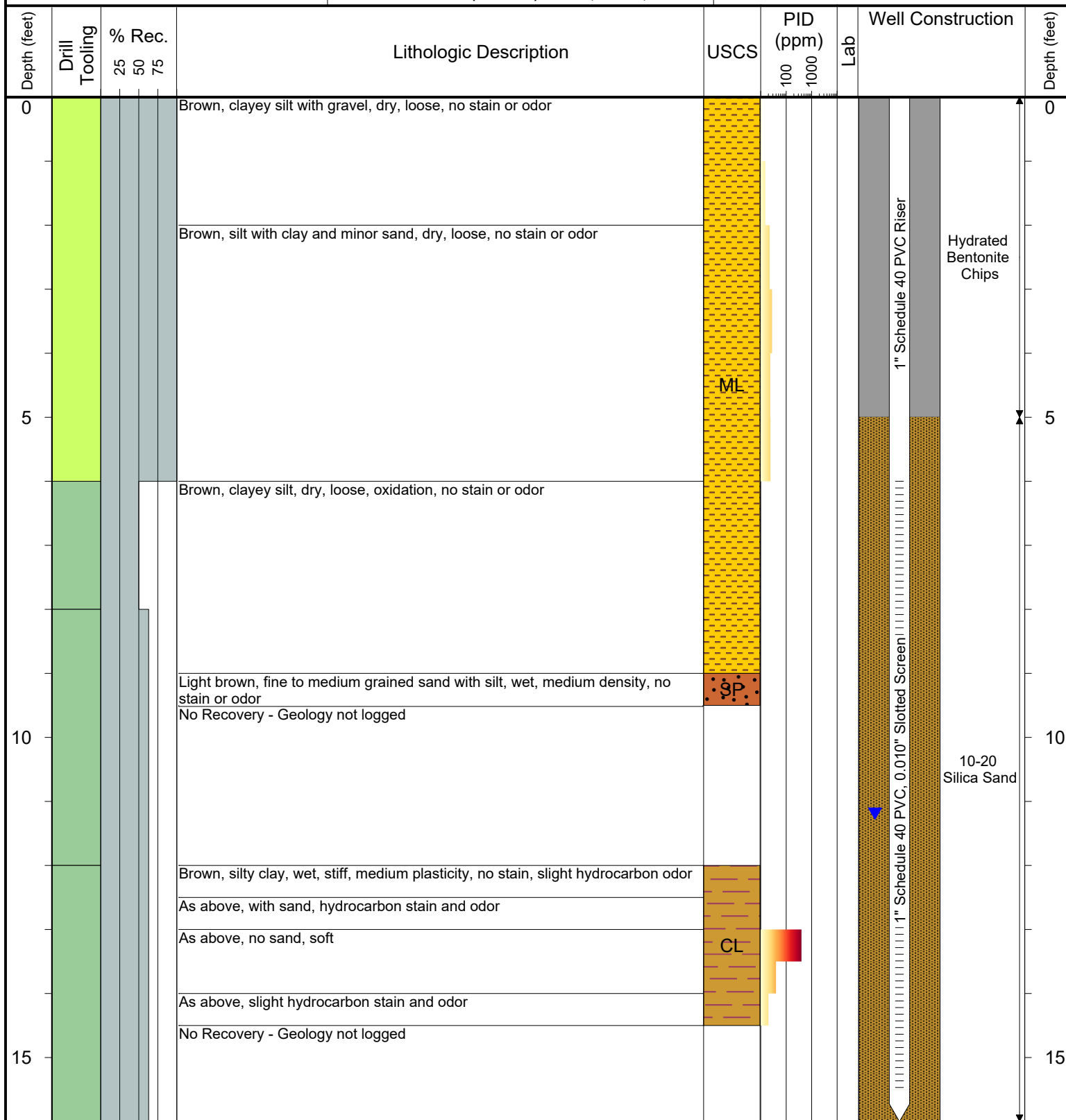
COMPLETION: Flush Mount

LATITUDE (WGS 1984): 40.231928544333

LONGITUDE (WGS 1984): -104.80143158139

CASING ELEVATION (FT. AMSL): 4878.58

GROUND ELEVATION (FT. AMSL): 4878.85



Drilling / Sample Method:

- Hand Auger
- Macro-Core

Laboratory Sample Types:

- Geotechnical Lab
- Analytical Chemistry Lab
- Geotechnical & Analytical Chemistry Lab



6899 Pecos Street, Unit C
Denver, Colorado 80221

CLIENT: Kerr-McGee Oil & Gas Onshore LP

LOGGED BY: Zach Mahaffey

PROJECT MANAGER: Robert Cornez

DRILLING CONTRACTOR: Tasman Geosciences

DRILLING EQUIPMENT: Hand Auger

DRILL BIT SIZE (INCHES): 3"

DATE STARTED - COMPLETED: 11/21/2016

TOTAL WELL DEPTH (FT. BGS): 15

DEPTH TO WATER (FT. BGS): 11.5 (11/21/16) ▼

Tuttle L 63N66W/17SE NW
Production Facility

BORING / WELL ID: BH02 (Destroyed)

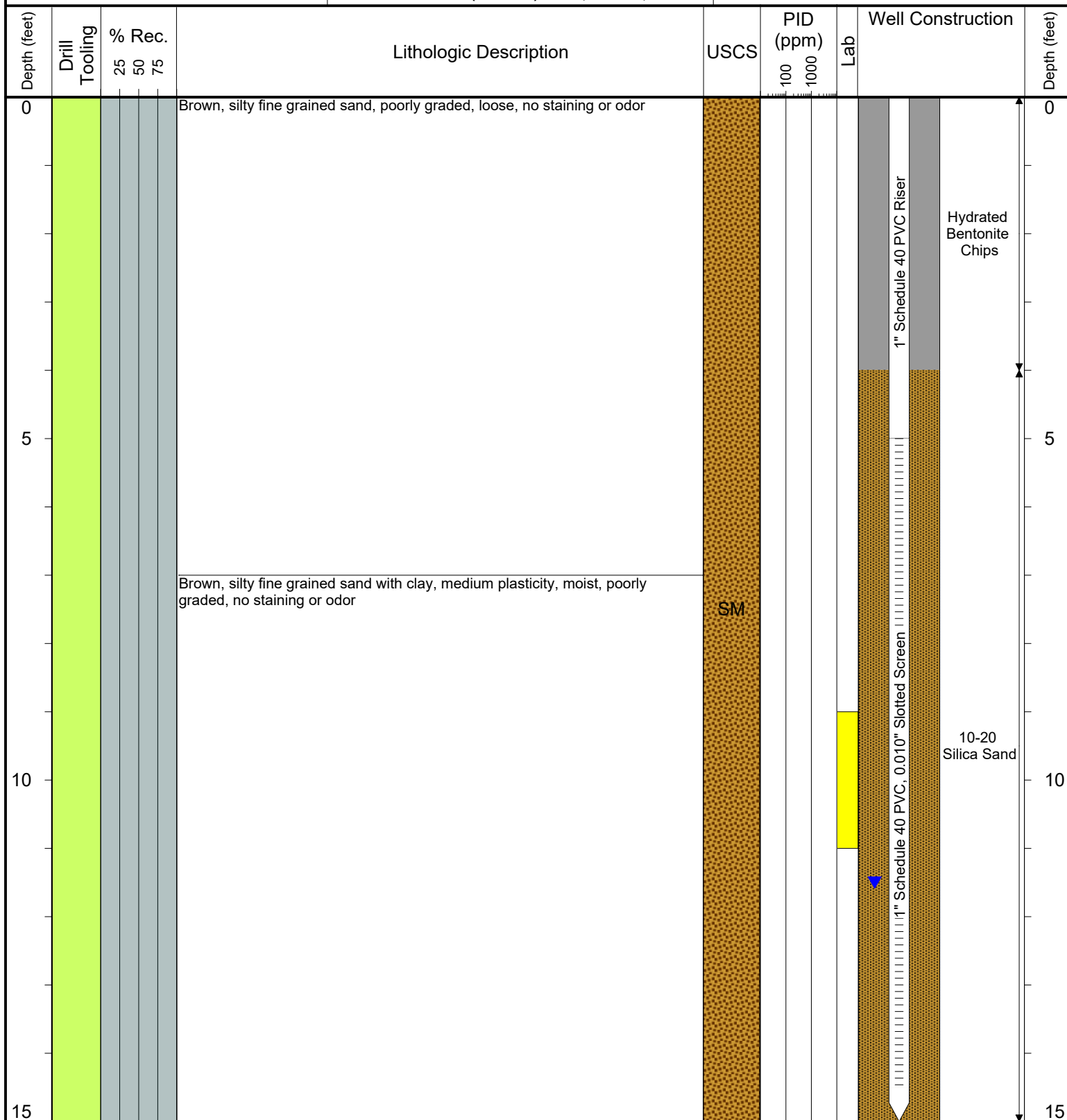
COMPLETION: Flush Mount

LATITUDE (WGS 1984): 40.231939089

LONGITUDE (WGS 1984): -104.80128744

CASING ELEVATION (FT. AMSL): 4878.82

GROUND ELEVATION (FT. AMSL): 4879.26



Drilling / Sample Method:

- Hand Auger
- Macro-Core

Laboratory Sample Types:

- Geotechnical Lab
- Analytical Chemistry Lab
- Geotechnical & Analytical Chemistry Lab



6899 Pecos Street, Unit C
Denver, Colorado 80221

CLIENT: Kerr-McGee Oil & Gas Onshore LP

LOGGED BY: Matt Petersen

PROJECT MANAGER: Robert Cornez

DRILLING CONTRACTOR: Tasman Geosciences

DRILLING EQUIPMENT: AMS - Powerprobe 9300 SK

DRILL BIT SIZE (INCHES): 2 3/8"

DATE STARTED - COMPLETED: 8/3/2017

TOTAL WELL DEPTH (FT. BGS): 14.5

DEPTH TO WATER (FT. BGS): 10.45 (11/14/17) ▼

Tuttle L 63N66W/17SEnw
Production Facility

BORING / WELL ID: BH02R

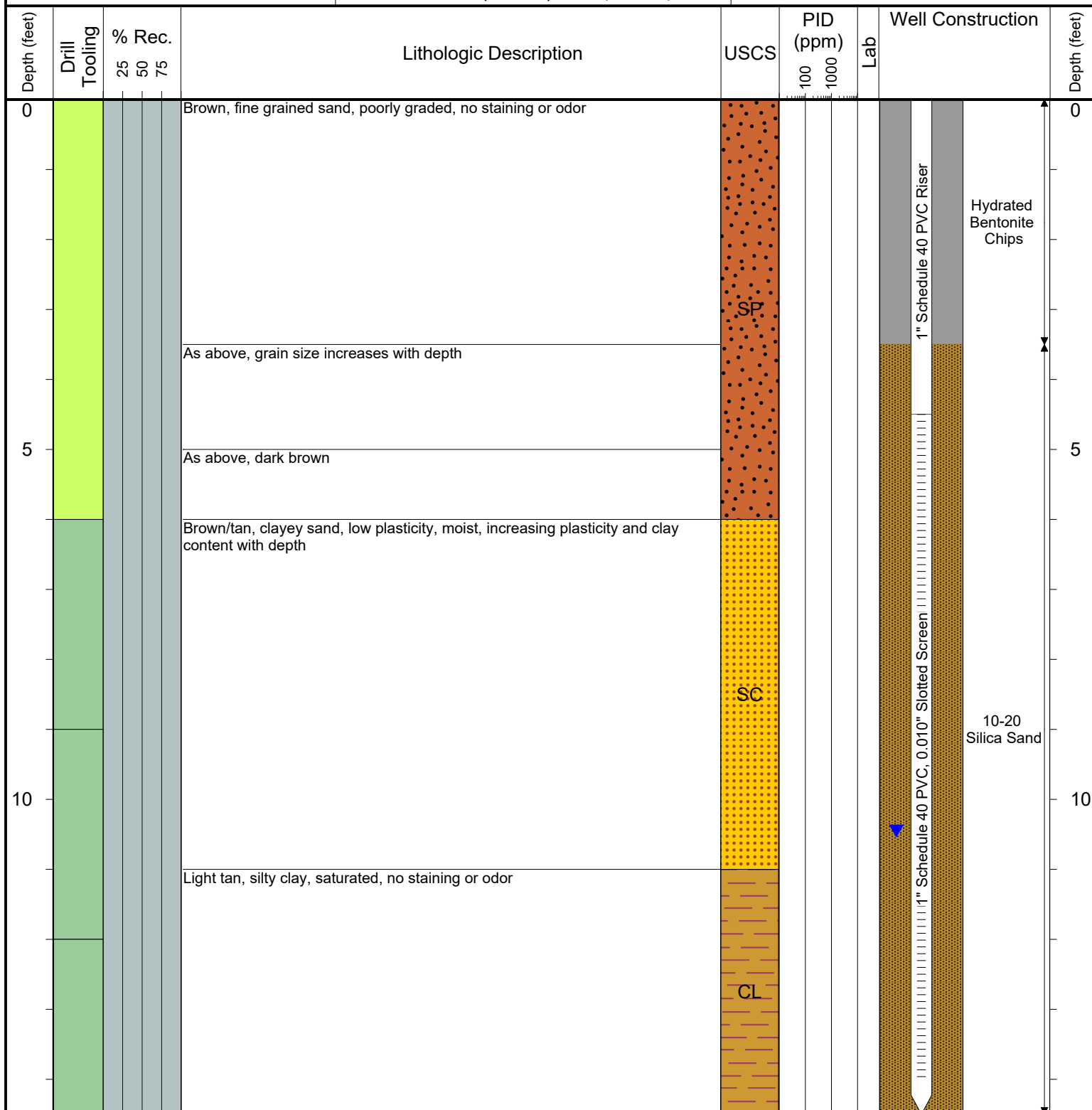
COMPLETION: Flush Mount

LATITUDE (WGS 1984): 40.231941289

LONGITUDE (WGS 1984): -104.80128033

CASING ELEVATION (FT. AMSL): 4879.02

GROUND ELEVATION (FT. AMSL): 4879.26



Drilling / Sample Method:

- Hand Auger
- Macro-Core

Laboratory Sample Types:

- Geotechnical Lab
- Analytical Chemistry Lab
- Geotechnical & Analytical Chemistry Lab



6899 Pecos Street, Unit C
Denver, Colorado 80221

CLIENT: Kerr-McGee Oil & Gas Onshore LP

LOGGED BY: Zach Mahaffey

PROJECT MANAGER: Robert Cornez

DRILLING CONTRACTOR: Tasman Geosciences

DRILLING EQUIPMENT: Hand Auger

DRILL BIT SIZE (INCHES): 3"

DATE STARTED - COMPLETED: 11/21/2016

TOTAL WELL DEPTH (FT. BGS): 12

DEPTH TO WATER (FT. BGS): 11.5 (11/21/16) ▼

Tuttle L 63N66W/17SENW
Production Facility

BORING / WELL ID: BH03

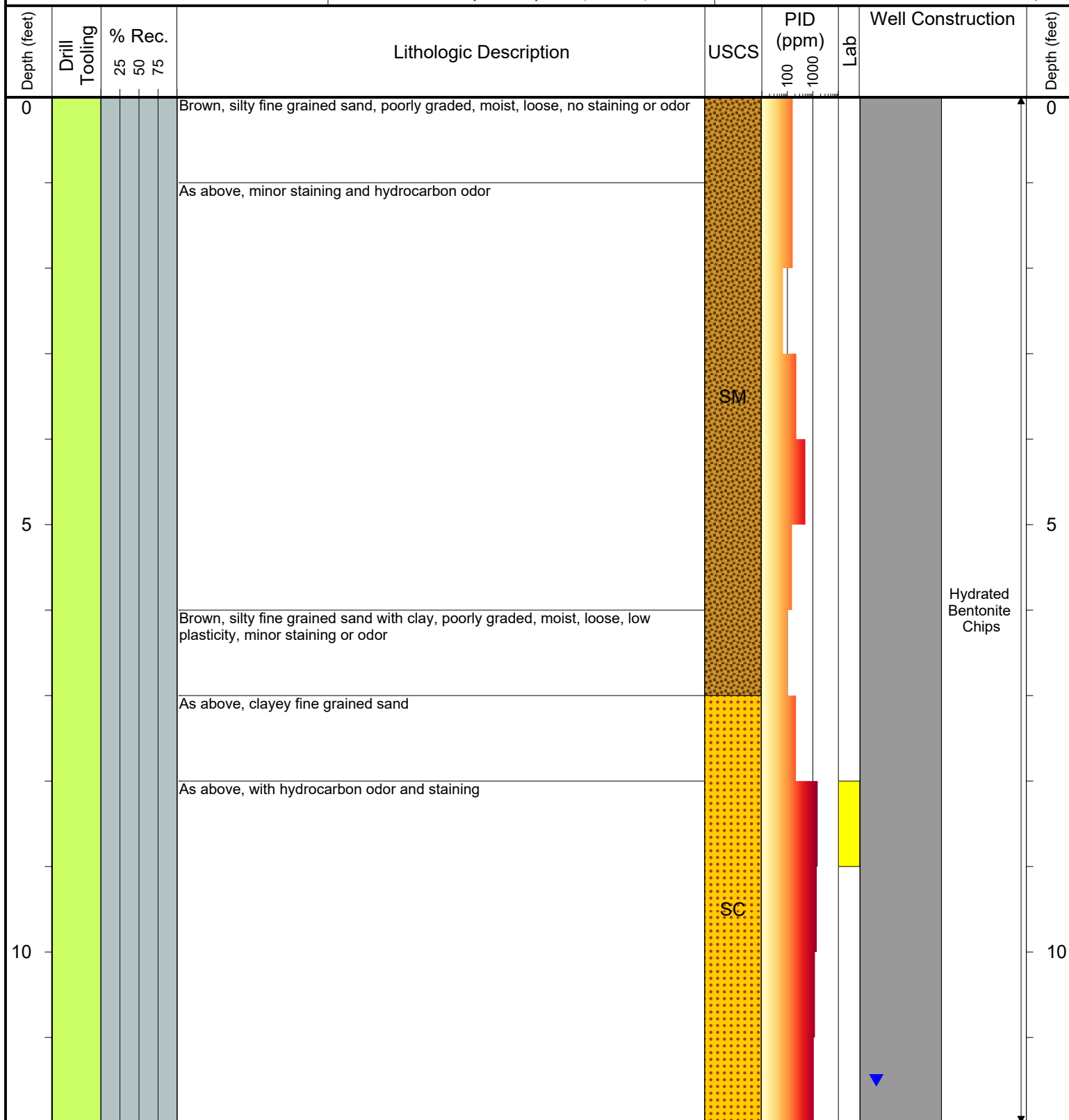
COMPLETION: No Well Installed

LATITUDE (WGS 1984): 40.231935828

LONGITUDE (WGS 1984): -104.801556

CASING ELEVATION (FT. AMSL): No Well Installed

GROUND ELEVATION (FT. AMSL): Not Surveyed



Drilling / Sample Method:

- Hand Auger
- Macro-Core

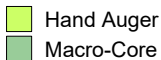
Laboratory Sample Types:

- Geotechnical Lab
- Analytical Chemistry Lab
- Geotechnical & Analytical Chemistry Lab



DEPTH TO WATER (FT. BGS): 10.04 (11/23/16)

GROUND ELEVATION (FT. AMSL): 4877.84



Geotechnical Lab
Analytical Chemistry Lab

 Geotechnical & Analytical Chemistry Lab



6899 Pecos Street, Unit C
Denver, Colorado 80221

CLIENT: Kerr-McGee Oil & Gas Onshore LP

LOGGED BY: Brandon LeVasseur

PROJECT MANAGER: Robert Cornez

DRILLING CONTRACTOR: Tasman Geosciences, Inc.

DRILLING EQUIPMENT: AMS PowerProbe

DRILL BIT SIZE (INCHES): 2-3/8"

DATE STARTED - COMPLETED: 6/11/2019

TOTAL WELL DEPTH (FT. BGS): 16

DEPTH TO WATER (FT. BGS): 10.86 (6/18/19) ▼

Tuttle L 63N66W/17SEW
Production Facility

BORING / WELL ID: BH04R

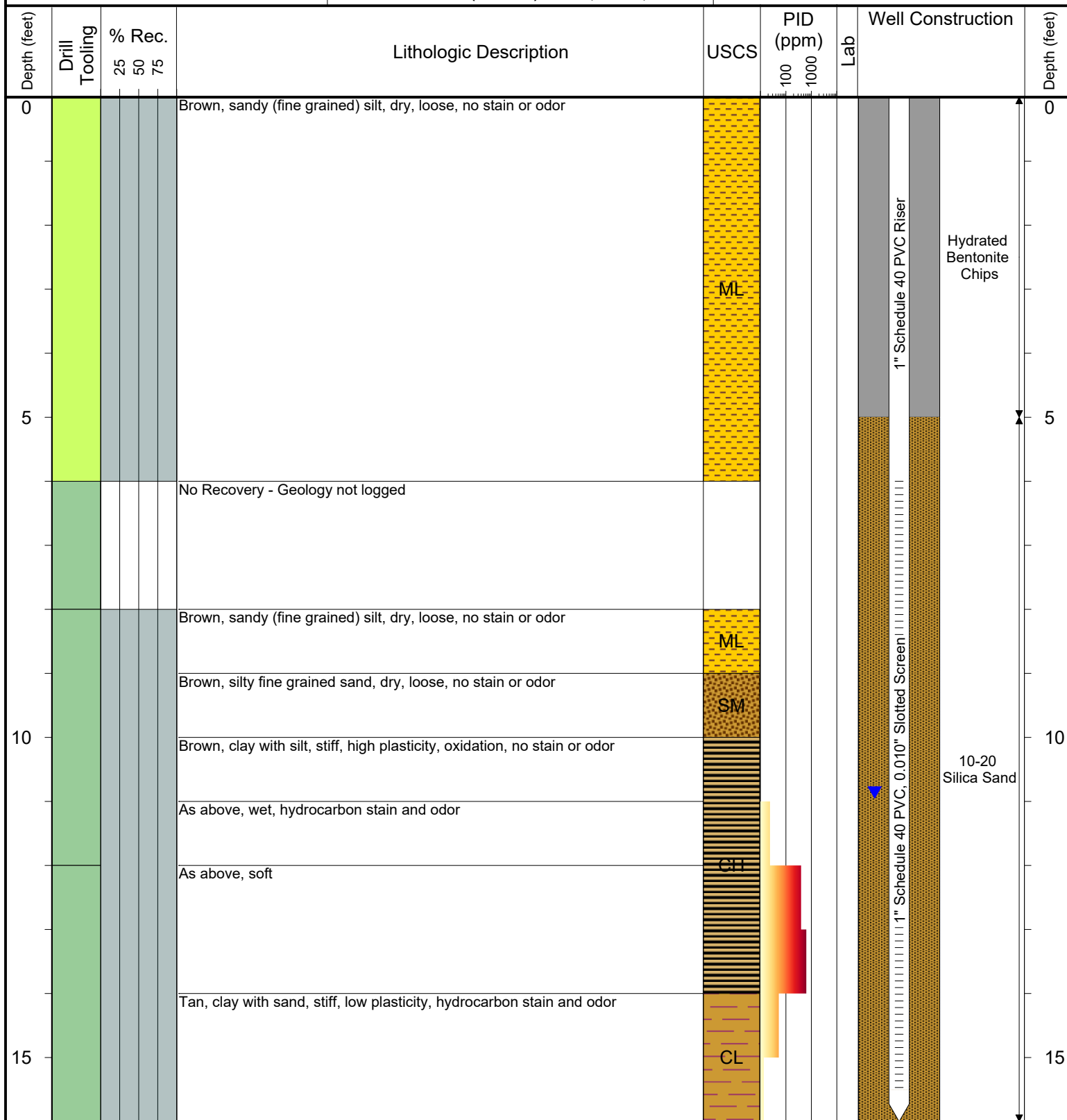
COMPLETION: Flush Mount

LATITUDE (WGS 1984): 40.23183666691

LONGITUDE (WGS 1984): -104.80160645665

CASING ELEVATION (FT. AMSL): 4877.96

GROUND ELEVATION (FT. AMSL): 4878.27



Drilling / Sample Method:

- Hand Auger
- Macro-Core

Laboratory Sample Types:

- Geotechnical Lab
- Analytical Chemistry Lab
- Geotechnical & Analytical Chemistry Lab



6899 Pecos Street, Unit C
Denver, Colorado 80221

CLIENT: Kerr-McGee Oil & Gas Onshore LP

LOGGED BY: Zach Mahaffey

PROJECT MANAGER: Robert Cornez

DRILLING CONTRACTOR: Tasman Geosciences

DRILLING EQUIPMENT: Hand Auger

DRILL BIT SIZE (INCHES): 3"

DATE STARTED - COMPLETED: 11/21/2016

TOTAL WELL DEPTH (FT. BGS): 12

DEPTH TO WATER (FT. BGS): 11 (11/21/16) ▼

Tuttle L 63N66W/17SENW
Production Facility

BORING / WELL ID: BH05

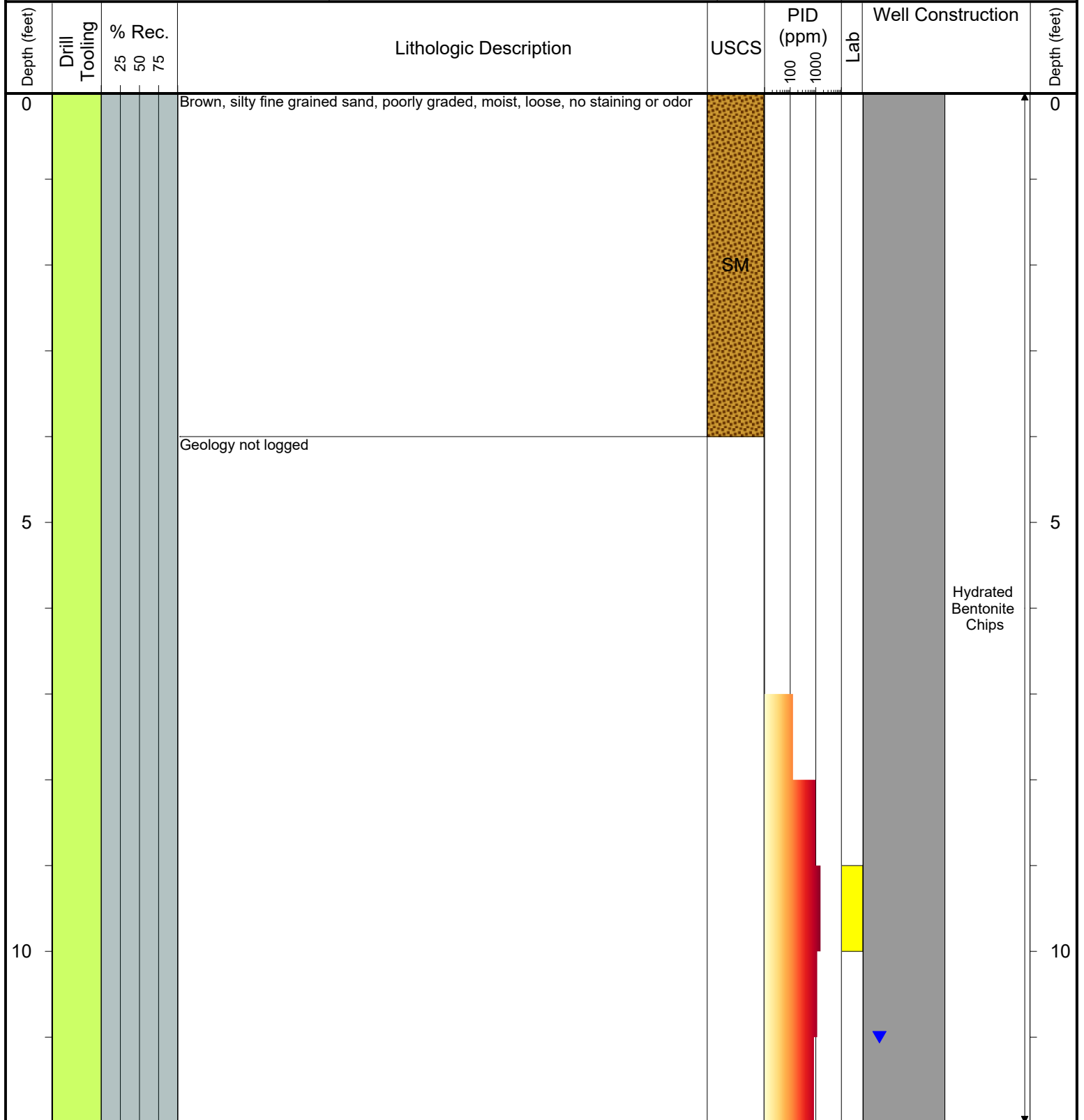
COMPLETION: No Well Installed

LATITUDE (WGS 1984): 40.231937732

LONGITUDE (WGS 1984): -104.80161334

CASING ELEVATION (FT. AMSL): No Well Installed

GROUND ELEVATION (FT. AMSL): Not Surveyed



Drilling / Sample Method:

Hand Auger
 Macro-Core

Laboratory Sample Types:

Geotechnical Lab
 Analytical Chemistry Lab
 Geotechnical & Analytical Chemistry Lab



6899 Pecos Street, Unit C
Denver, Colorado 80221

CLIENT: Kerr-McGee Oil & Gas Onshore LP

LOGGED BY: Zach Mahaffey

PROJECT MANAGER: Robert Cornez

DRILLING CONTRACTOR: Tasman Geosciences

DRILLING EQUIPMENT: Hand Auger

DRILL BIT SIZE (INCHES): 3"

DATE STARTED - COMPLETED: 11/21/2016

TOTAL WELL DEPTH (FT. BGS): 12

DEPTH TO WATER (FT. BGS): 11 (11/21/16) ▼

Tuttle L 63N66W/17SENW
Production Facility

BORING / WELL ID: BH06

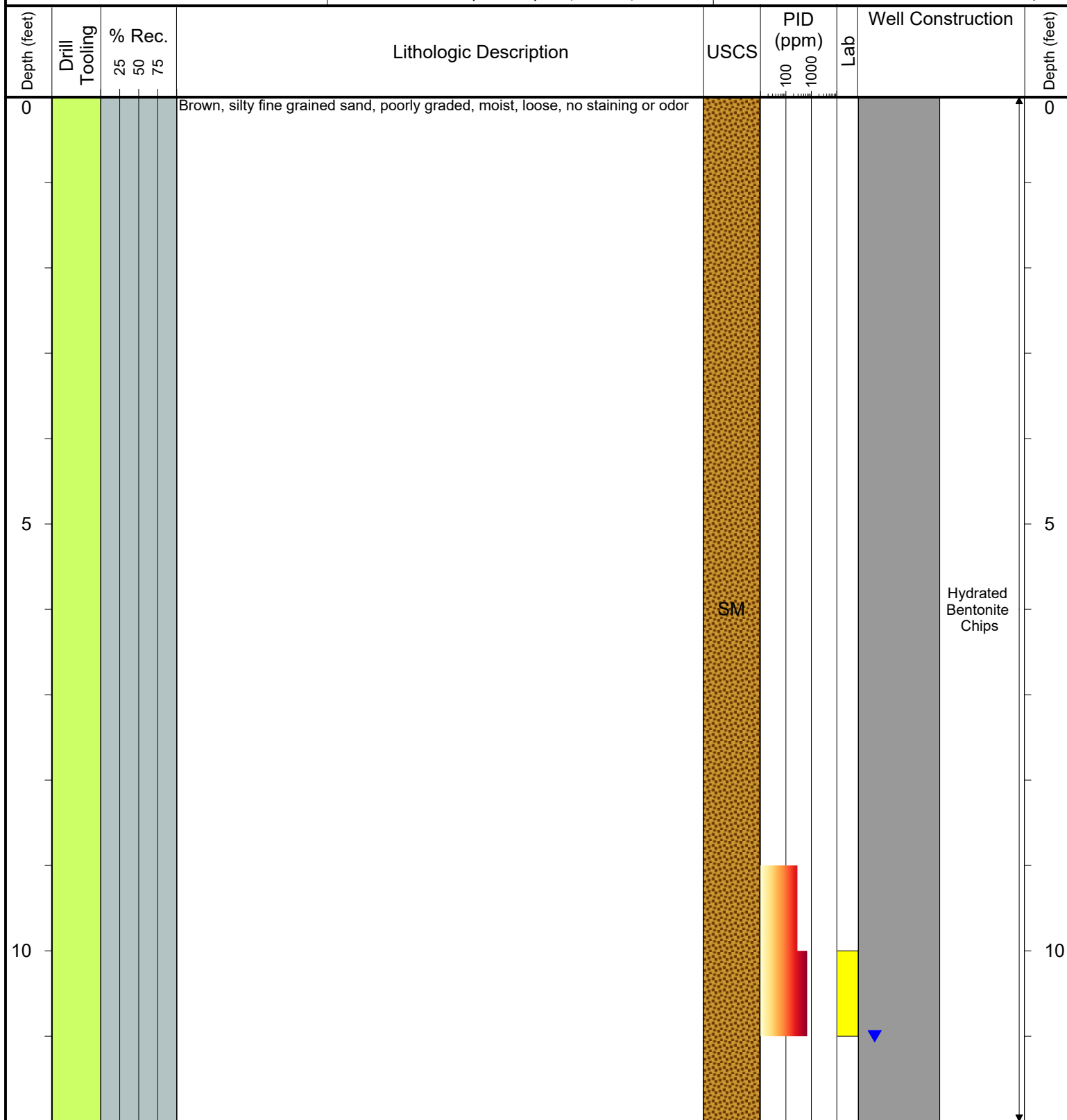
COMPLETION: No Well Installed

LATITUDE (WGS 1984): 40.232001734

LONGITUDE (WGS 1984): -104.80161652

CASING ELEVATION (FT. AMSL): No Well Installed

GROUND ELEVATION (FT. AMSL): Not Surveyed



Drilling / Sample Method:

- Hand Auger
- Macro-Core

Laboratory Sample Types:

- Geotechnical Lab
- Analytical Chemistry Lab
- Geotechnical & Analytical Chemistry Lab



6899 Pecos Street, Unit C
Denver, Colorado 80221

CLIENT: Kerr-McGee Oil & Gas Onshore LP

LOGGED BY: Zach Mahaffey

PROJECT MANAGER: Robert Cornez

DRILLING CONTRACTOR: Tasman Geosciences

DRILLING EQUIPMENT: Hand Auger

DRILL BIT SIZE (INCHES): 3"

DATE STARTED - COMPLETED: 11/21/2016

TOTAL WELL DEPTH (FT. BGS): 12

DEPTH TO WATER (FT. BGS): 12 (11/21/16) ▼

Tuttle L 63N66W/17SE NW
Production Facility

BORING / WELL ID: BH07

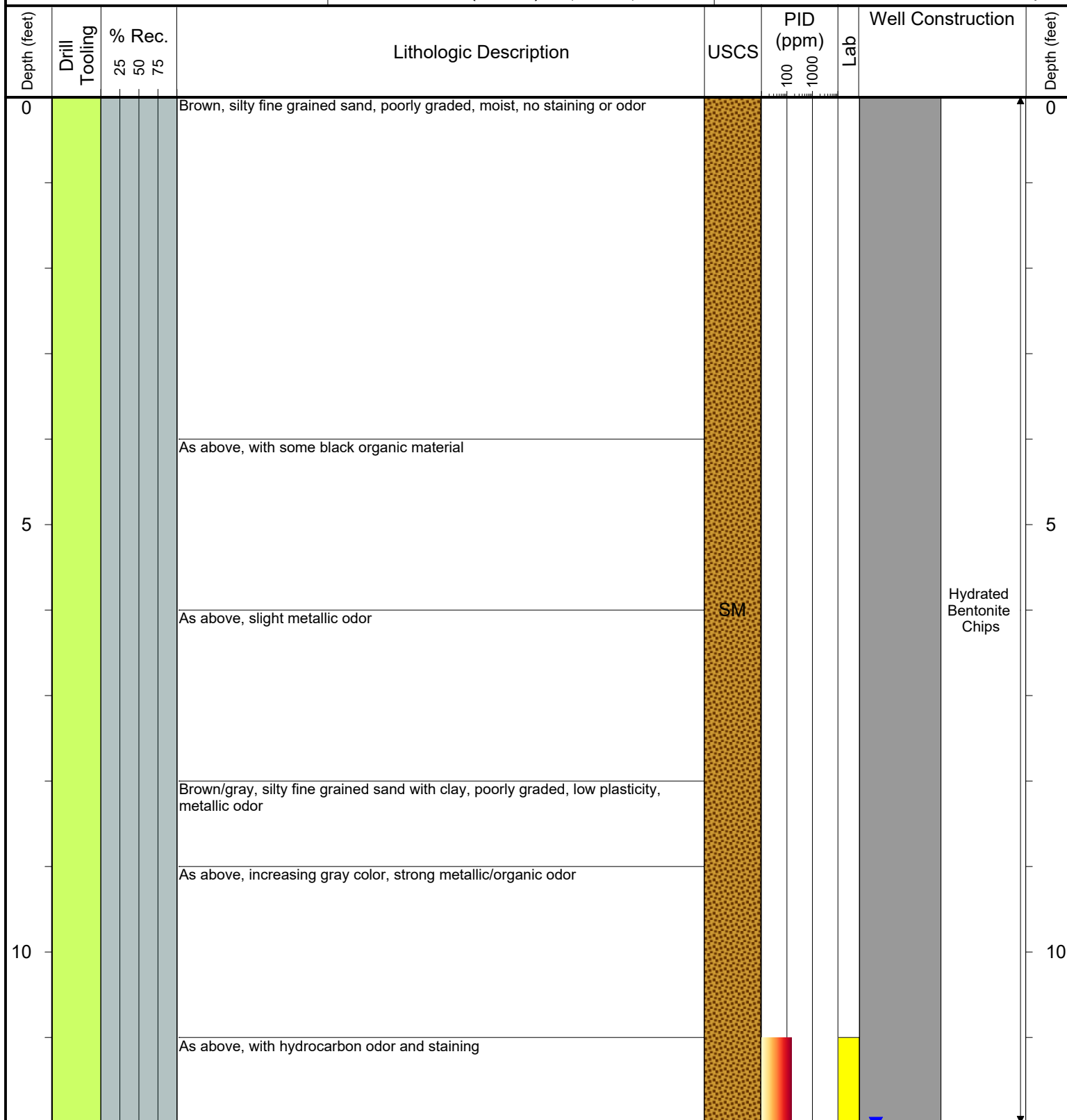
COMPLETION: No Well Installed

LATITUDE (WGS 1984): 40.232008948

LONGITUDE (WGS 1984): -104.80149791

CASING ELEVATION (FT. AMSL): No Well Installed

GROUND ELEVATION (FT. AMSL): Not Surveyed



Drilling / Sample Method:

- Hand Auger
- Macro-Core

Laboratory Sample Types:

- Geotechnical Lab
- Analytical Chemistry Lab
- Geotechnical & Analytical Chemistry Lab



6899 Pecos Street, Unit C
Denver, Colorado 80221

CLIENT: Kerr-McGee Oil & Gas Onshore LP

LOGGED BY: Zach Mahaffey

PROJECT MANAGER: Robert Cornez

DRILLING CONTRACTOR: Tasman Geosciences

DRILLING EQUIPMENT: Hand Auger

DRILL BIT SIZE (INCHES): 3"

DATE STARTED - COMPLETED: 11/22/2016

TOTAL WELL DEPTH (FT. BGS): 15

DEPTH TO WATER (FT. BGS): 10.91 (11/23/16) ▼

Tuttle L 63N66W/17SE NW
Production Facility

BORING / WELL ID: BH08 (Abandoned)

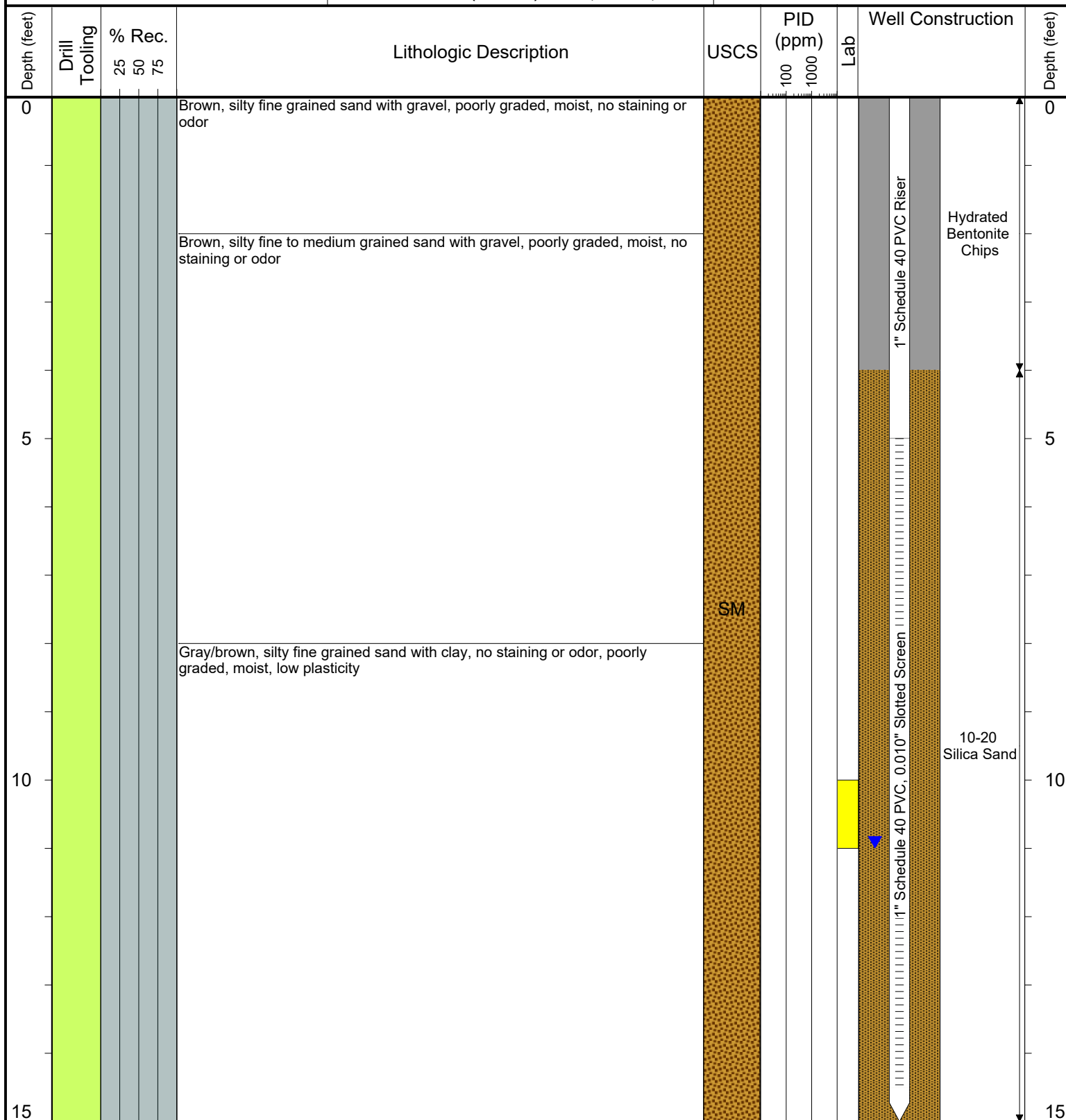
COMPLETION: Flush Mount

LATITUDE (WGS 1984): 40.232011912

LONGITUDE (WGS 1984): -104.8013687

CASING ELEVATION (FT. AMSL): 4878.63

GROUND ELEVATION (FT. AMSL): 4878.89



Drilling / Sample Method:

- Hand Auger
- Macro-Core

Laboratory Sample Types:

- Geotechnical Lab
- Analytical Chemistry Lab
- Geotechnical & Analytical Chemistry Lab



6899 Pecos Street, Unit C
Denver, Colorado 80221

CLIENT: Kerr-McGee Oil & Gas Onshore LP

LOGGED BY: Brandon LeVasseur

PROJECT MANAGER: Robert Cornez

DRILLING CONTRACTOR: Tasman Geosciences, Inc.

DRILLING EQUIPMENT: AMS PowerProbe

DRILL BIT SIZE (INCHES): 2-3/8"

DATE STARTED - COMPLETED: 6/11/2019

TOTAL WELL DEPTH (FT. BGS): 16

DEPTH TO WATER (FT. BGS): 11.30 (6/18/19) ▼

Tuttle L 63N66W/17SEW
Production Facility

BORING / WELL ID: BH08R

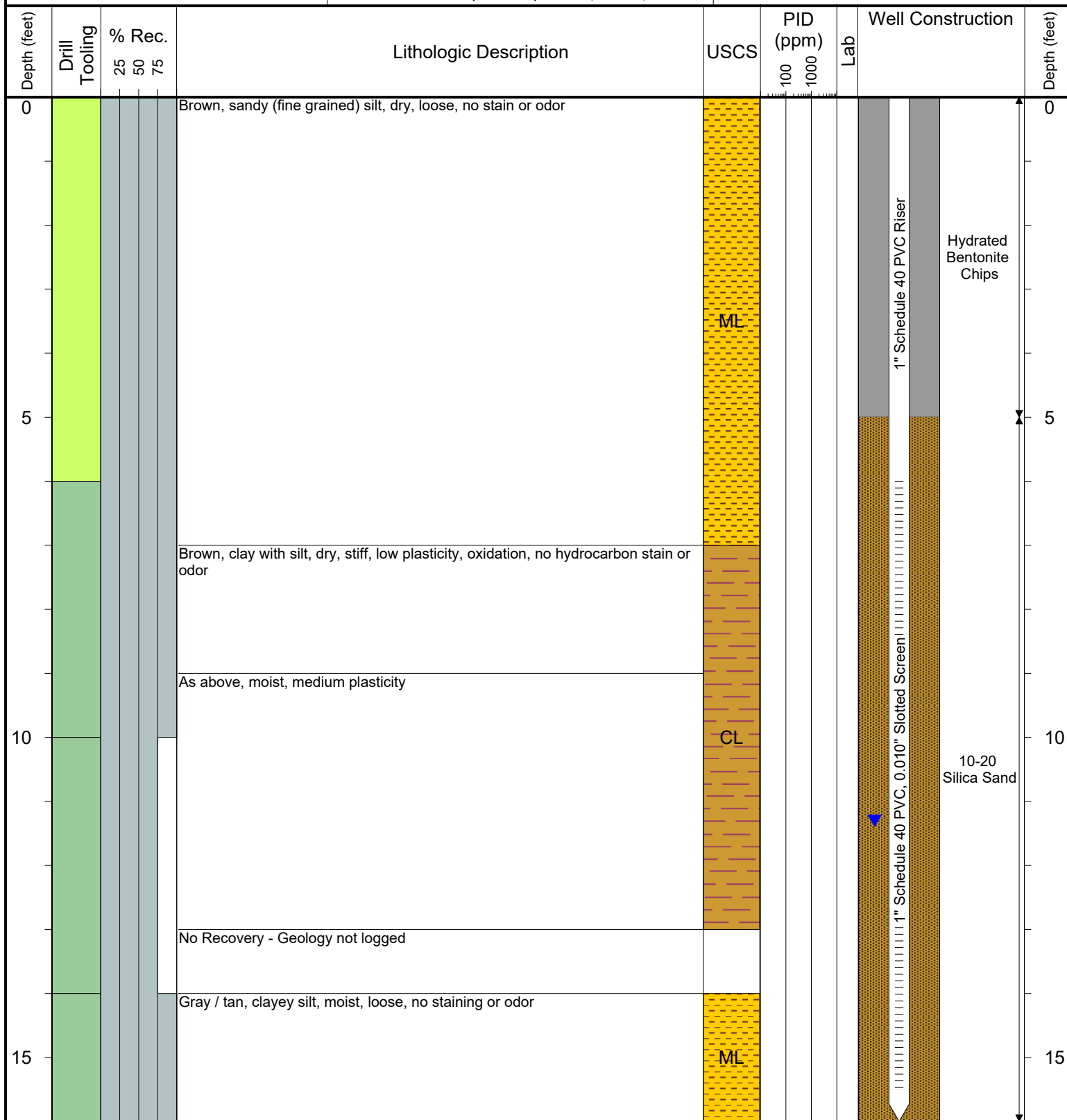
COMPLETION: Flush Mount

LATITUDE (WGS 1984): 40.232013333092

LONGITUDE (WGS 1984): -104.80133458183

CASING ELEVATION (FT. AMSL): 4878.75

GROUND ELEVATION (FT. AMSL): 4879.02



Drilling / Sample Method:

- Hand Auger
- Macro-Core

Laboratory Sample Types:

- Geotechnical Lab
- Analytical Chemistry Lab
- Geotechnical & Analytical Chemistry Lab



6899 Pecos Street, Unit C
Denver, Colorado 80221

CLIENT: Kerr-McGee Oil & Gas Onshore LP

LOGGED BY: Zach Mahaffey

PROJECT MANAGER: Robert Cornez

DRILLING CONTRACTOR: Tasman Geosciences

DRILLING EQUIPMENT: Hand Auger

DRILL BIT SIZE (INCHES): 3"

DATE STARTED - COMPLETED: 11/22/2016

TOTAL WELL DEPTH (FT. BGS): 15

DEPTH TO WATER (FT. BGS): 10.08 (11/23/16) ▼

Tuttle L 63N66W/17SE NW
Production Facility

BORING / WELL ID: BH09 (Abandoned)

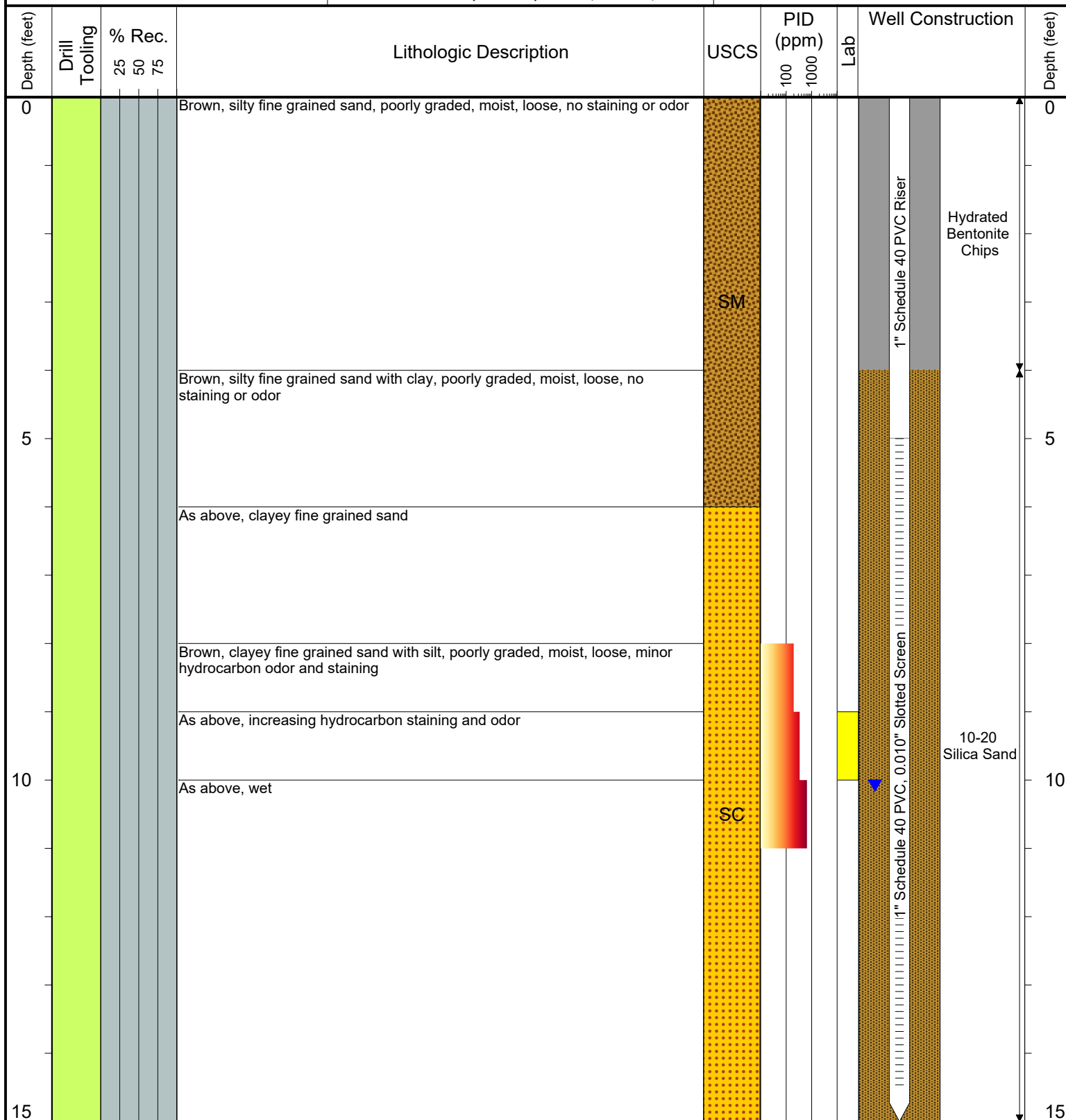
COMPLETION: Flush Mount

LATITUDE (WGS 1984): 40.232004707

LONGITUDE (WGS 1984): -104.80172072

CASING ELEVATION (FT. AMSL): 4877.44

GROUND ELEVATION (FT. AMSL): 4877.55



Drilling / Sample Method:

- Hand Auger
- Macro-Core

Laboratory Sample Types:

- Geotechnical Lab
- Analytical Chemistry Lab
- Geotechnical & Analytical Chemistry Lab



6899 Pecos Street, Unit C
Denver, Colorado 80221

CLIENT: Kerr-McGee Oil & Gas Onshore LP

LOGGED BY: Brandon LeVasseur

PROJECT MANAGER: Robert Cornez

DRILLING CONTRACTOR: Tasman Geosciences, Inc.

DRILLING EQUIPMENT: AMS PowerProbe

DRILL BIT SIZE (INCHES): 2-3/8"

DATE STARTED - COMPLETED: 6/11/2019

TOTAL WELL DEPTH (FT. BGS): 16

DEPTH TO WATER (FT. BGS): 10.42 (6/18/19) ▼

Tuttle L 63N66W/17SENW
Production Facility

BORING / WELL ID: BH09R

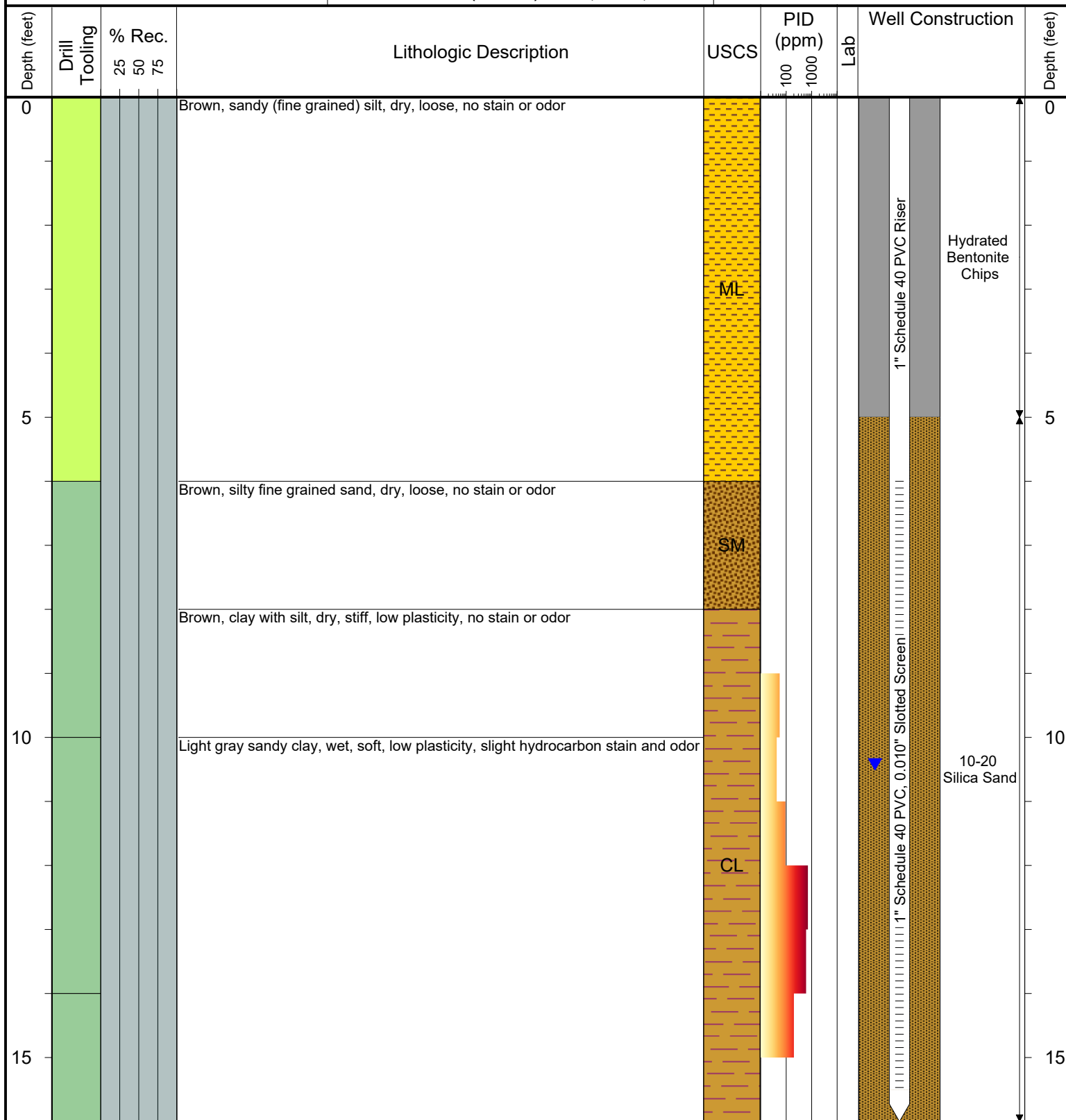
COMPLETION: Flush Mount

LATITUDE (WGS 1984): 40.232010803494

LONGITUDE (WGS 1984): -104.80172260905

CASING ELEVATION (FT. AMSL): 4877.33

GROUND ELEVATION (FT. AMSL): 4877.6



Drilling / Sample Method:

- Hand Auger
- Macro-Core

Laboratory Sample Types:

- Geotechnical Lab
- Analytical Chemistry Lab
- Geotechnical & Analytical Chemistry Lab



6899 Pecos Street, Unit C
Denver, Colorado 80221

CLIENT: Kerr-McGee Oil & Gas Onshore LP

LOGGED BY: Zach Mahaffey

PROJECT MANAGER: Robert Cornez

DRILLING CONTRACTOR: Tasman Geosciences

DRILLING EQUIPMENT: Hand Auger

DRILL BIT SIZE (INCHES): 3"

DATE STARTED - COMPLETED: 11/22/2016

TOTAL WELL DEPTH (FT. BGS): 15

DEPTH TO WATER (FT. BGS): 10.26 (11/23/16) ▼

Tuttle L 63N66W/17SE NW
Production Facility

BORING / WELL ID: BH10

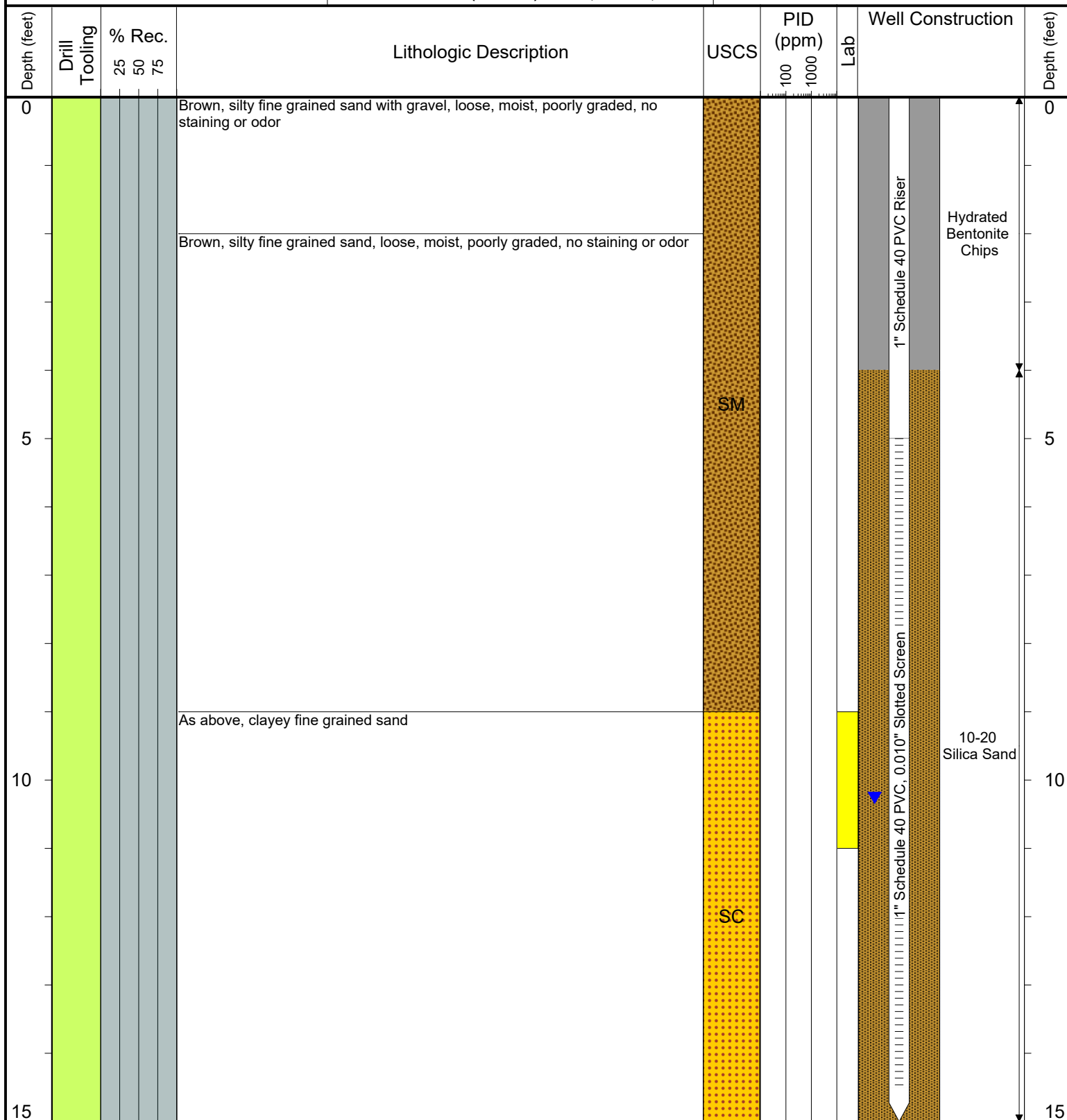
COMPLETION: Flush Mount

LATITUDE (WGS 1984): 40.232125123

LONGITUDE (WGS 1984): -104.80164438

CASING ELEVATION (FT. AMSL): 4877.28

GROUND ELEVATION (FT. AMSL): 4877.56



Drilling / Sample Method:

- Hand Auger
- Macro-Core

Laboratory Sample Types:

- Geotechnical Lab
- Analytical Chemistry Lab
- Geotechnical & Analytical Chemistry Lab



6899 Pecos Street, Unit C
Denver, Colorado 80221

CLIENT: Kerr-McGee Oil & Gas Onshore LP

LOGGED BY: Matt Petersen

PROJECT MANAGER: Robert Cornez

DRILLING CONTRACTOR: Tasman Geosciences

DRILLING EQUIPMENT: AMS - Powerprobe 9300 SK

DRILL BIT SIZE (INCHES): 2 3/8"

DATE STARTED - COMPLETED: 8/3/2017

TOTAL WELL DEPTH (FT. BGS): 15

DEPTH TO WATER (FT. BGS): 9.82 (11/9/17) ▼

Tuttle L 63N66W/17SE NW
Production Facility

BORING / WELL ID: BH11 (Abandoned)

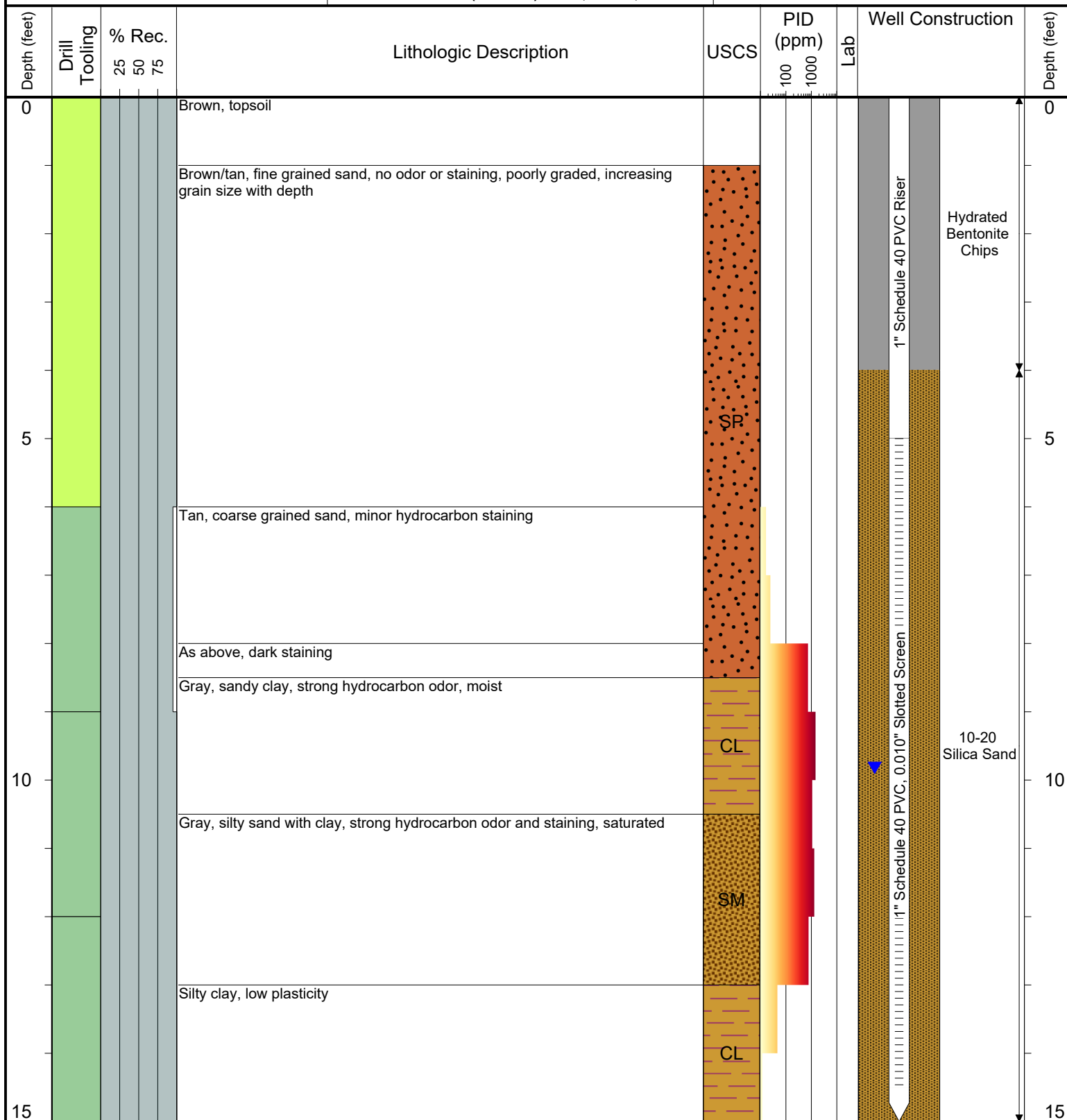
COMPLETION: Flush Mount

LATITUDE (WGS 1984): 40.231834538

LONGITUDE (WGS 1984): -104.80150344

CASING ELEVATION (FT. AMSL): 4878.25

GROUND ELEVATION (FT. AMSL): 4878.45



Drilling / Sample Method:

- Hand Auger
- Macro-Core

Laboratory Sample Types:

- Geotechnical Lab
- Analytical Chemistry Lab
- Geotechnical & Analytical Chemistry Lab



6899 Pecos Street, Unit C
Denver, Colorado 80221

CLIENT: Kerr-McGee Oil & Gas Onshore LP

LOGGED BY: Brandon LeVasseur

PROJECT MANAGER: Robert Cornez

DRILLING CONTRACTOR: Tasman Geosciences, Inc.

DRILLING EQUIPMENT: AMS PowerProbe

DRILL BIT SIZE (INCHES): 2-3/8"

DATE STARTED - COMPLETED: 6/11/2019

TOTAL WELL DEPTH (FT. BGS): 16

DEPTH TO WATER (FT. BGS): 11.43 (6/18/19) ▼

Tuttle L 63N66W/17SEW
Production Facility

BORING / WELL ID: BH11R

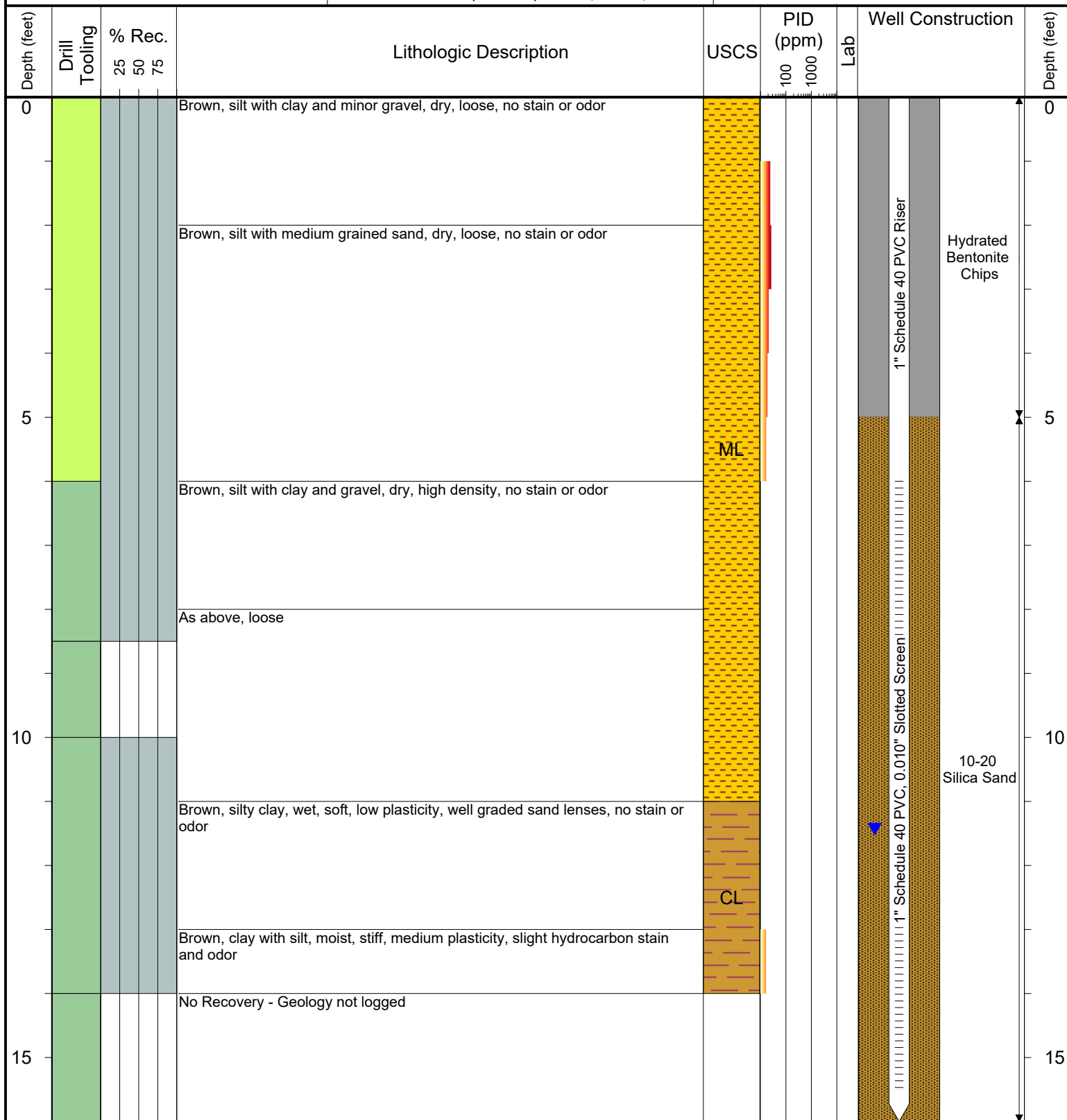
COMPLETION: Flush Mount

LATITUDE (WGS 1984): 40.231828214689

LONGITUDE (WGS 1984): -104.80150485742

CASING ELEVATION (FT. AMSL): 4878.66

GROUND ELEVATION (FT. AMSL): 4878.99



Drilling / Sample Method:

- Hand Auger
- Macro-Core

Laboratory Sample Types:

- Geotechnical Lab
- Analytical Chemistry Lab
- Geotechnical & Analytical Chemistry Lab



6899 Pecos Street, Unit C
Denver, Colorado 80221

CLIENT: Kerr-McGee Oil & Gas Onshore LP

LOGGED BY: Matt Petersen

PROJECT MANAGER: Robert Cornez

DRILLING CONTRACTOR: Tasman Geosciences

DRILLING EQUIPMENT: AMS - Powerprobe 9300 SK

DRILL BIT SIZE (INCHES): 2 3/8"

DATE STARTED - COMPLETED: 8/3/2017

TOTAL WELL DEPTH (FT. BGS): 15

DEPTH TO WATER (FT. BGS): 9.22 (11/9/17)

Tuttle L 63N66W/17SE NW
Production Facility

BORING / WELL ID: BH12

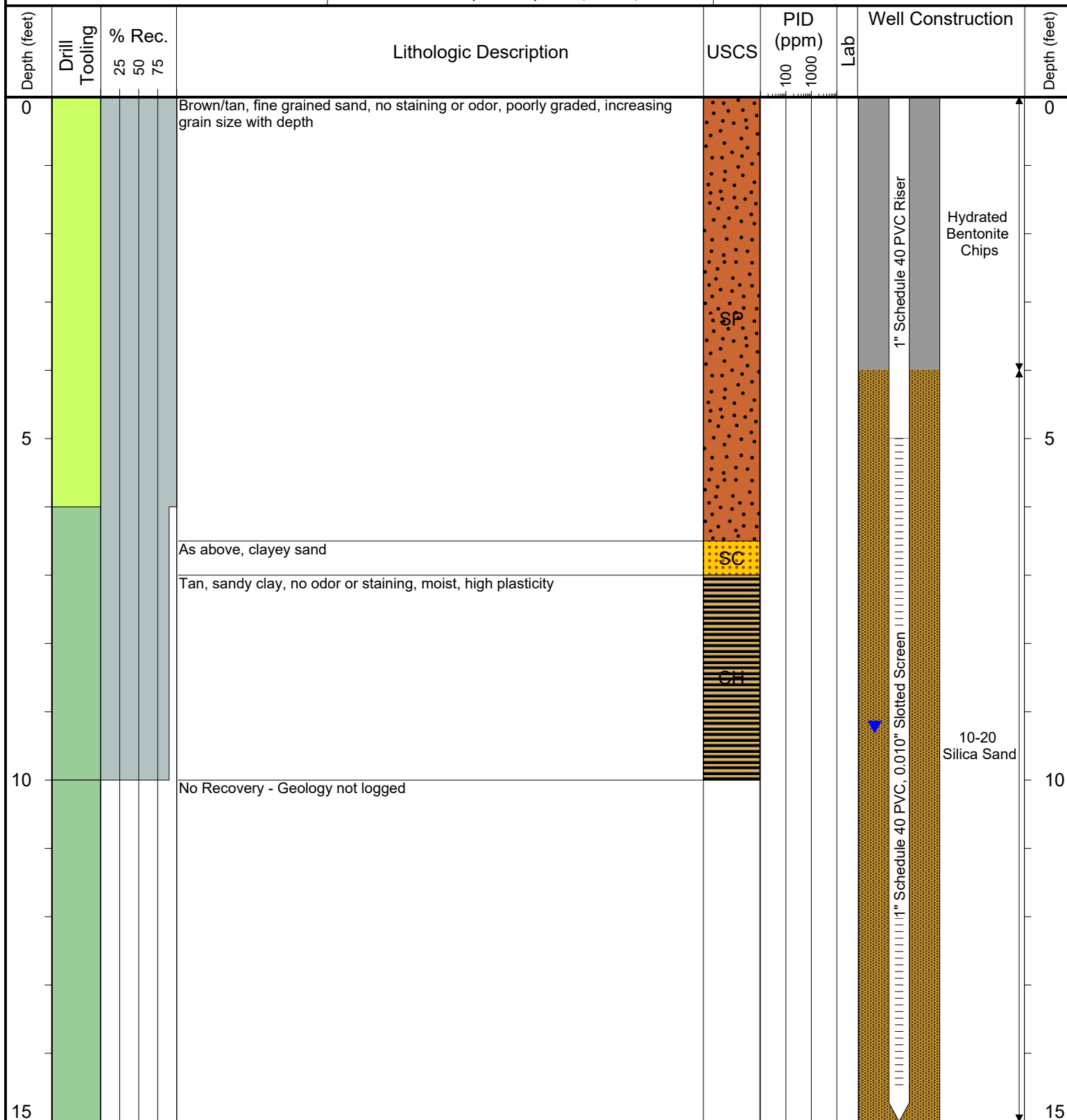
COMPLETION: Flush Mount

LATITUDE (WGS 1984): 40.231833577

LONGITUDE (WGS 1984): -104.80173776

CASING ELEVATION (FT. AMSL): 4877.48

GROUND ELEVATION (FT. AMSL): 4877.51



Drilling / Sample Method:

- Hand Auger
- Macro-Core

Laboratory Sample Types:

- Geotechnical Lab
- Analytical Chemistry Lab
- Geotechnical & Analytical Chemistry Lab



6899 Pecos Street, Unit C
Denver, Colorado 80221

CLIENT: Kerr-McGee Oil & Gas Onshore LP

LOGGED BY: Matt Petersen

PROJECT MANAGER: Robert Cornez

DRILLING CONTRACTOR: Tasman Geosciences

DRILLING EQUIPMENT: AMS - Powerprobe 9300 SK

DRILL BIT SIZE (INCHES): 2 3/8"

DATE STARTED - COMPLETED: 8/3/2017

TOTAL WELL DEPTH (FT. BGS): 15

DEPTH TO WATER (FT. BGS): 9.08 (11/9/17) ▼

Tuttle L 63N66W/17SE NW
Production Facility

BORING / WELL ID: BH13

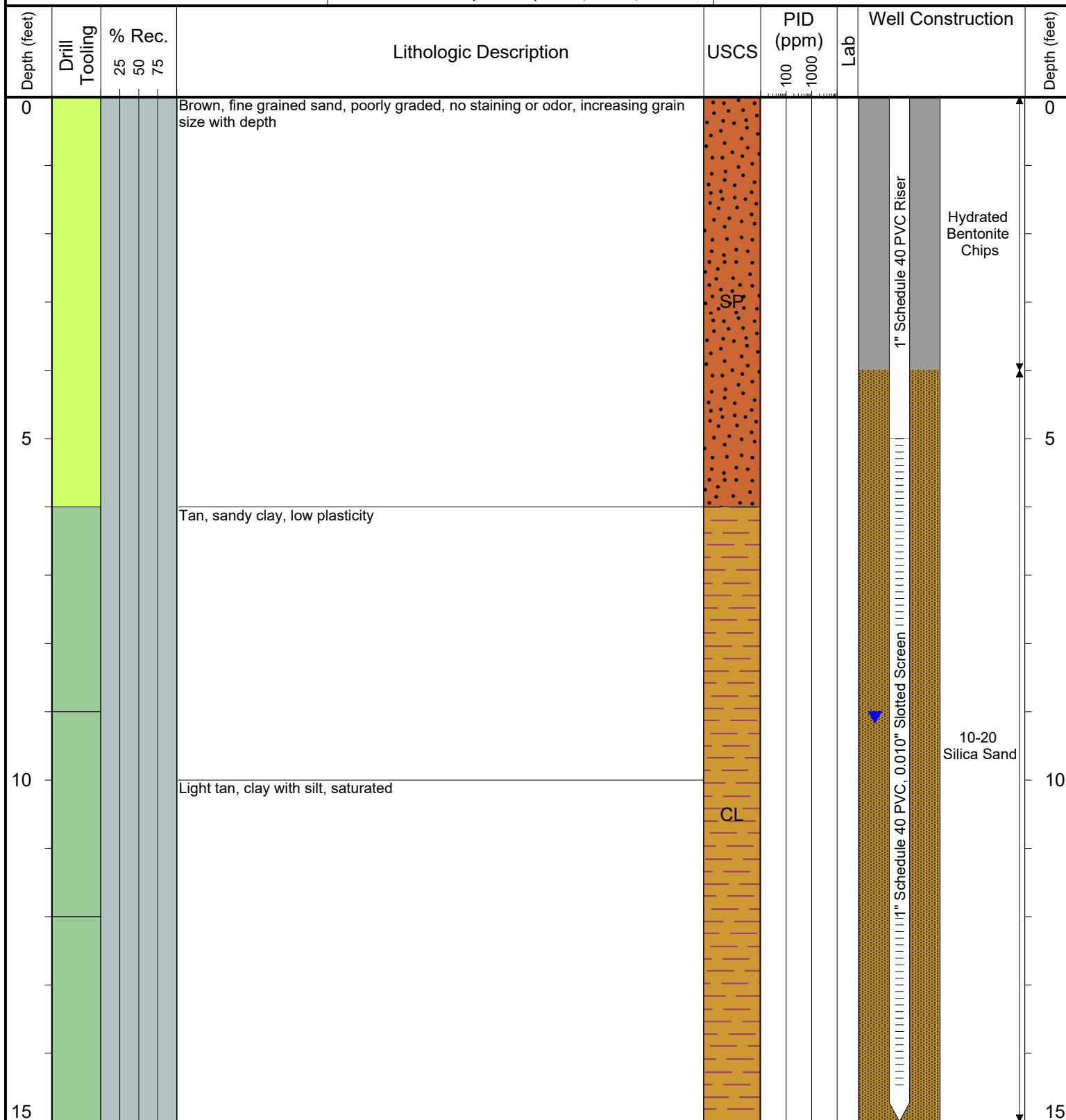
COMPLETION: Flush Mount

LATITUDE (WGS 1984): 40.231985537

LONGITUDE (WGS 1984): -104.80187883

CASING ELEVATION (FT. AMSL): 4876.78

GROUND ELEVATION (FT. AMSL): 4876.96



Drilling / Sample Method:

- Hand Auger
- Macro-Core

Laboratory Sample Types:

- Geotechnical Lab
- Analytical Chemistry Lab
- Geotechnical & Analytical Chemistry Lab



6899 Pecos Street, Unit C
Denver, Colorado 80221

CLIENT: Kerr-McGee Oil & Gas Onshore LP

LOGGED BY: Matt Petersen

PROJECT MANAGER: Robert Cornez

DRILLING CONTRACTOR: Tasman Geosciences

DRILLING EQUIPMENT: AMS - Powerprobe 9300 SK

DRILL BIT SIZE (INCHES): 2 3/8"

DATE STARTED - COMPLETED: 8/3/2017

TOTAL WELL DEPTH (FT. BGS): 14.5

DEPTH TO WATER (FT. BGS): 10.24 (11/9/17)

Tuttle L 63N66W/17SE NW
Production Facility

BORING / WELL ID: BH14

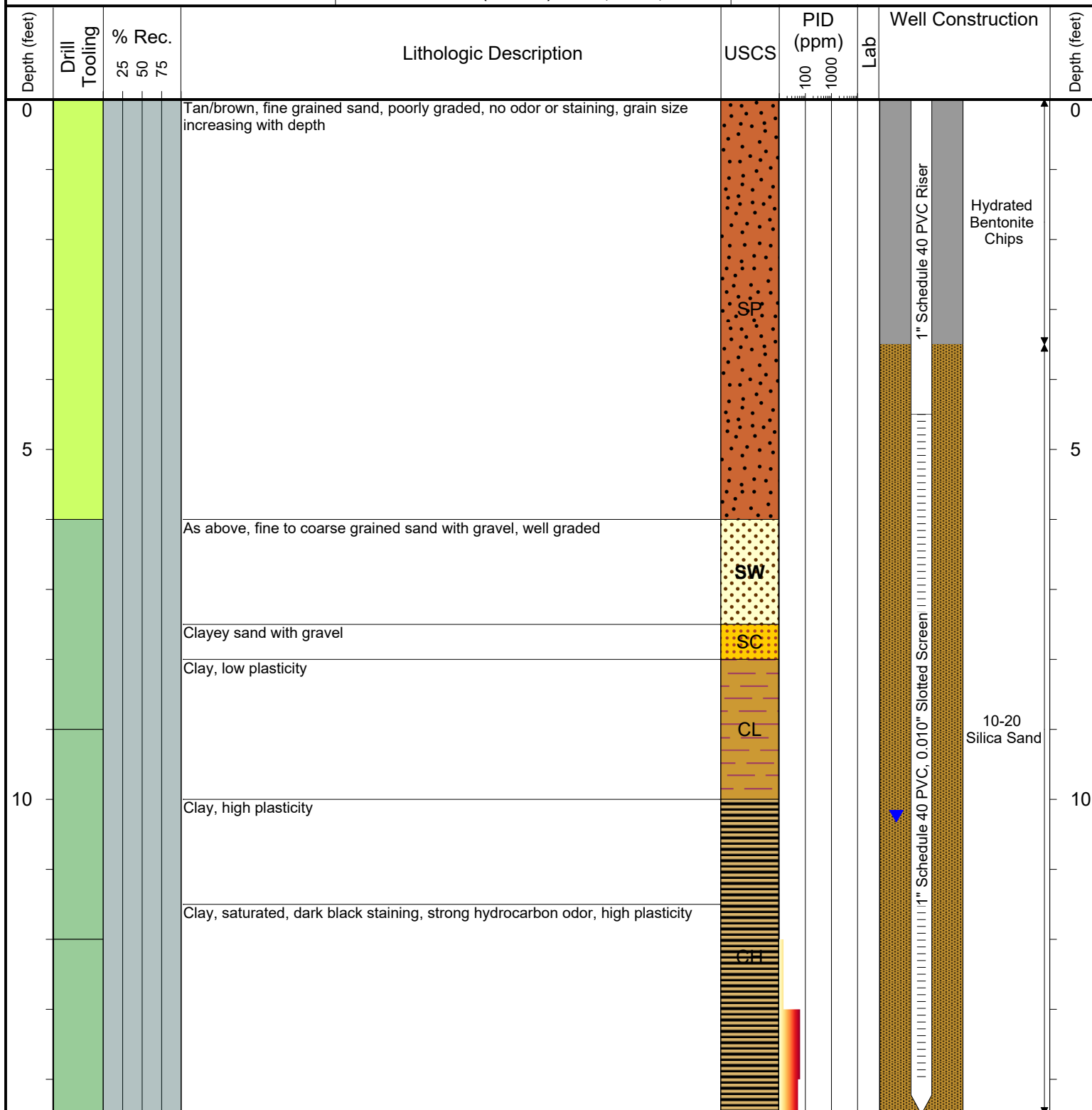
COMPLETION: Flush Mount

LATITUDE (WGS 1984): 40.232110233

LONGITUDE (WGS 1984): -104.8018537

CASING ELEVATION (FT. AMSL): 4876.72

GROUND ELEVATION (FT. AMSL): 4877.03



Drilling / Sample Method:

Hand Auger
 Macro-Core

Laboratory Sample Types:

Geotechnical Lab
 Analytical Chemistry Lab
 Geotechnical & Analytical Chemistry Lab