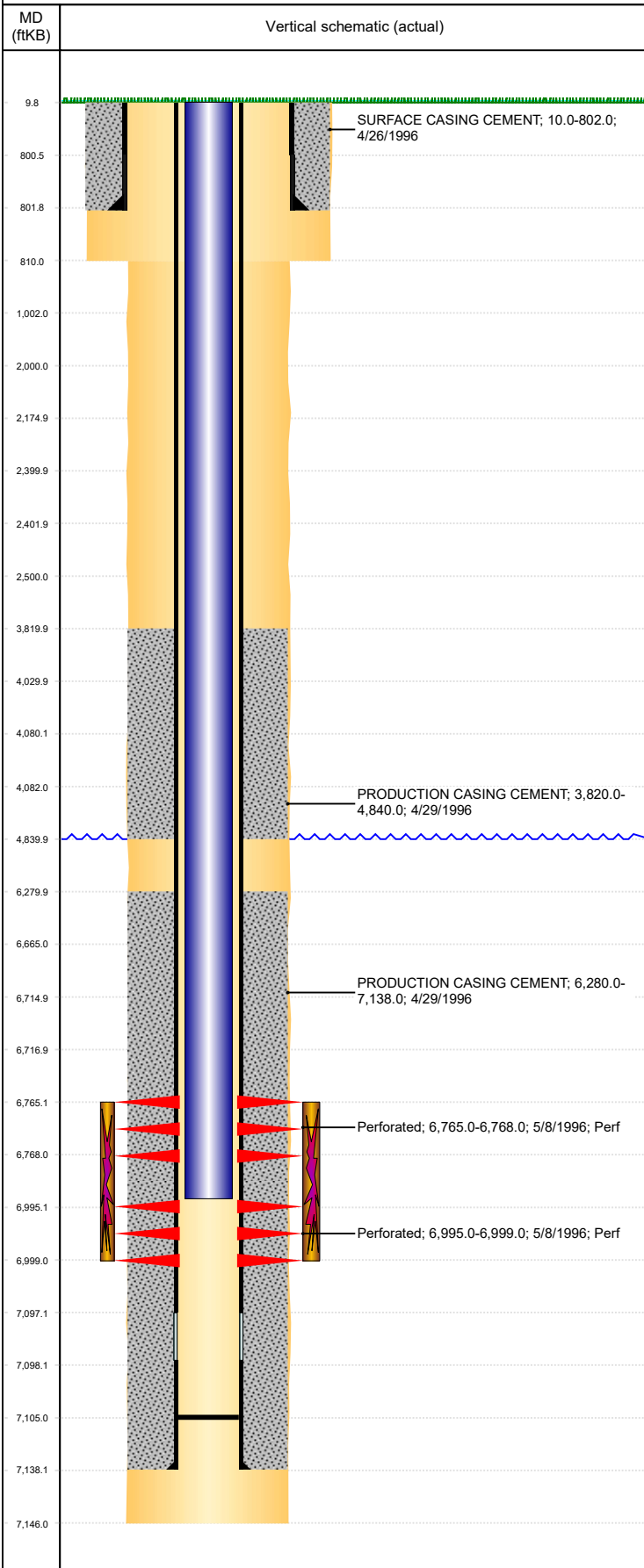


Well Name: HSR GUTTERSEN 11-33

VERTICAL, ORIGINAL HOLE, 12/17/2019 2:36:08 PM



Well Header									
API 05-123-19114		Business Unit DJ BASIN			District 15		Well Config VERTICAL		
KB - GL / MSL (ft... 10.00		Spud Date 4/26/1996		P & A Date		Well Production Status PR			SoRT No
Comment LIMITED ENTRY									
Surface Location (Congressional)									
Qtr 3 NE	Qtr 4 SW	Section 33	Twnshp 3	Twnsh... N	Range 64	Rng E... W	Actual Latitude (°) 40.18036000	Actual Longitude (°) -104.55870000	
Wellbore Sections									
Section Des			Size (in)			Act Top, MD (ftKB)		Act Btm, MD (ftKB)	
SURFACE			12 1/4			10		810	
PRODUCTION			7 7/8			810		7,146	
Casing Strings									
Csg Des			Run Date		OD (in)	Wt/Len (lb/ft)	Grade	Top, MD (ftKB)	MD (ftKB)
Surface			4/26/1996		8 5/8	24.00		10.0	802.0
Production			4/29/1996		3 1/2	7.70	I-70	10.0	7,138.0
Cement									
Des					Start Date		Top (ftKB)		Btm (ftKB)
SURFACE CASING CEMENT					4/26/1996		10.0		802.0
PRODUCTION CASING CEMENT					4/29/1996		3,820.0		4,840.0
PRODUCTION CASING CEMENT					4/29/1996		6,280.0		7,138.0
Zone Statuses									
Zone Name		Status Date	Status	Fluid Type	Job			Prod Method	
CODELL		6/20/1996	PR		DRILLING/COMPLETION - ORIGINAL, 4/26/1996...			Flowing	
NIOBRARA		6/20/1996	PR		DRILLING/COMPLETION - ORIGINAL, 4/26/1996...			Flowing	
Perforation Data									
Linked Zone			Bnch/Stg	Entered Shot Total	Top (ftKB)		Btm (ftKB)		Date
NIOBRARA, ORIGINAL HOLE				6	6,765.00		6,768.00		5/8/1996
CODELL, ORIGINAL HOLE				8	6,995.00		6,999.00		5/8/1996
Stimulation Intervals									
Zone				Start Date			Top (ftKB)		Btm (ftKB)
				5/9/1996			6,765.0		6,999.0
Other In Hole									
Run Date		Des				OD (in)	Top (ftKB)	Btm (ftKB)	
Logs									
Date		Type				Top, MD (ftKB)		Btm, MD (ftKB)	
4/29/1996		COMPENSATED DENSITY				4,000.0		7,146.0	
4/29/1996		INDUCTION				802.0		7,146.0	
5/3/1996		CEMENT BOND				3,750.0		7,072.0	
1/9/2018		GYRO				12.0		6,900.0	
Plug Back Total Depths									
Date		Type		Com				Depth (ftKB)	
5/3/1996		FILL		DEPTH LOGGER ON CBL				7,080.0	
10/5/2011		FILL		CLEAN OUT TO 7105'				7,105.0	